



# **Incline Energy Partners**

**Weld County, CO (NAD 83)**

**Hungenberg**

**Hungenberg UH 8**

**Wellbore #1**

**Plan: Design #2**

## **Standard Planning Report**

**13 March, 2020**



Project: Weld County, CO (NAD 83)  
 Site: Hungenberg  
 Well: Hungenberg UH 8  
 Wellbore: Wellbore #1  
 Design: Design #2

# Incline Energy Partners

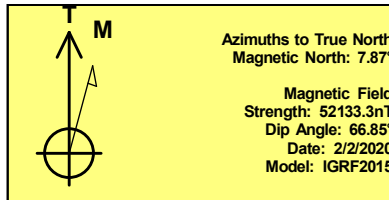
Geodetic System: US State Plane 1983  
 Datum: North American Datum 1983  
 Ellipsoid: GRS 1980  
 Zone: Colorado Northern Zone  
 System Datum: Mean Sea Level

## SECTION DETAILS

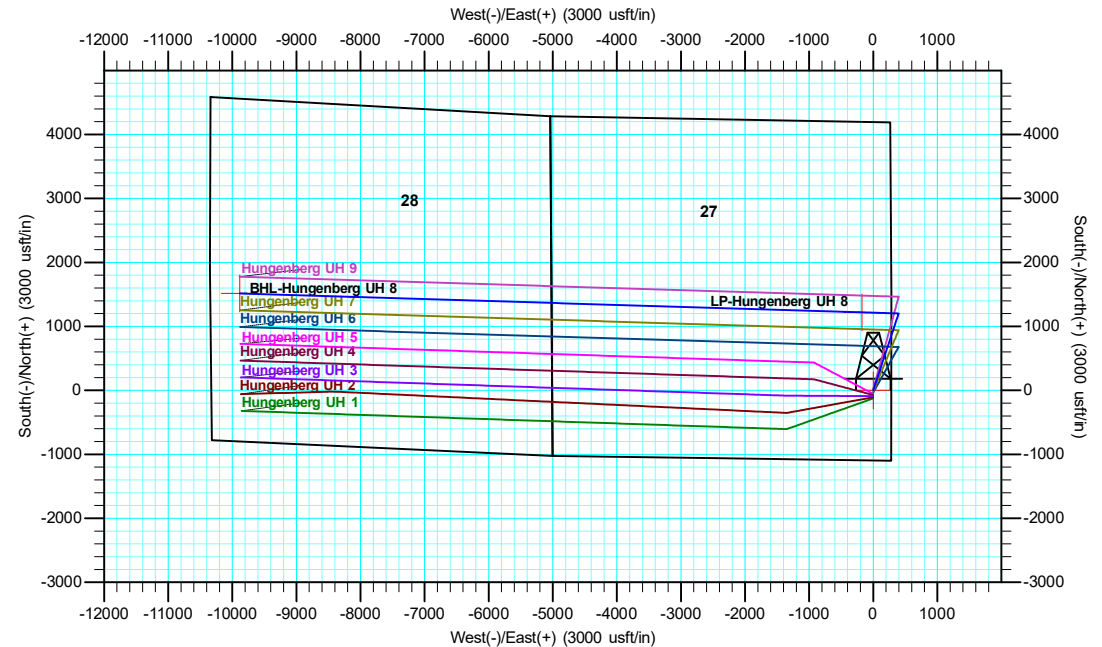
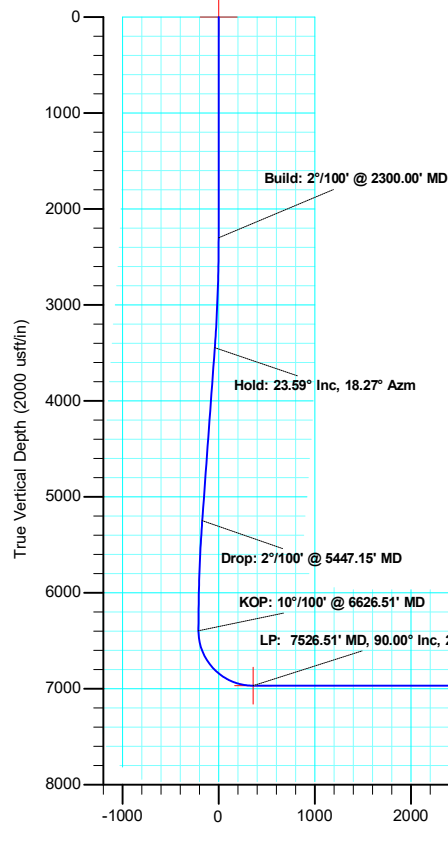
Sec	MD	Inc	Azi	TVD	+N/-S	+E/-W	Dleg	TFace	VSect	Target
1	0.00	0.00	0.00	0.00	0.00	0.00	0.00	0.00	0.00	
2	2300.00	0.00	0.00	2300.00	0.00	0.00	0.00	0.00	0.00	
3	3479.36	23.59	18.27	3446.33	227.28	75.04	2.00	18.27	-39.72	
4	5447.15	23.59	18.27	5249.71	974.98	321.89	0.00	0.00	-170.41	
5	6626.51	0.00	0.00	6396.04	1202.27	396.93	2.00	180.00	-210.13	
6	7526.51	90.00	271.74	6969.00	1219.71	-175.76	10.00	0.00	358.59	LP-Hungenberg UH 8
7	17238.44	90.00	271.74	6969.00	1515.40	-9883.19	0.00	0.00	9998.70	BHL-Hungenberg UH 8

## WELL DETAILS: Hungenberg UH 8

+N/-S	+E/-W	Northing	Ground Level: Easting	4694.00 Latitude	Longitude
0.00	0.00	1408906.83	3239100.25	40.452671	-104.640822



SHL: 1096 FSL/ 282 FEL Sec. 27  
 TPZ: 2313 FSL/ 460 FEL Sec. 27  
 BHL: 2313 FSL/ 460 FWL Sec. 28



Plan: Design #2 (Hungenberg UH 8/Wellbore #1)

Created By: Keith Noack Date: 15:06, March 13 2020

<b>Database:</b>	Local	<b>Local Co-ordinate Reference:</b>	Well Hungenberg UH 8
<b>Company:</b>	Incline Energy Partners	<b>TVD Reference:</b>	WELL @ 4719.00usft
<b>Project:</b>	Weld County, CO (NAD 83)	<b>MD Reference:</b>	WELL @ 4719.00usft
<b>Site:</b>	Hungenberg	<b>North Reference:</b>	True
<b>Well:</b>	Hungenberg UH 8	<b>Survey Calculation Method:</b>	Minimum Curvature
<b>Wellbore:</b>	Wellbore #1		
<b>Design:</b>	Design #2		

<b>Project</b>	Weld County, CO (NAD 83)		
<b>Map System:</b>	US State Plane 1983	<b>System Datum:</b>	Mean Sea Level
<b>Geo Datum:</b>	North American Datum 1983		
<b>Map Zone:</b>	Colorado Northern Zone		

Site		Hungenberg				
Site Position:		Northing:	1,410,439.83 usft	Latitude:	40.456941	
From:	Lat/Long	Easting:	3,236,763.14 usft	Longitude:	-104.649167	
Position Uncertainty:		0.00 usft	Slot Radius:	13-3/16 "	Grid Convergence:	0.55 °

Well		Hungenberg UH 8				
Well Position	+N-S	-1,555.35 usft	Northing:	1,408,906.83 usft	Latitude:	40.452671
	+E/-W	2,322.30 usft	Easting:	3,239,100.25 usft	Longitude:	-104.640822
Position Uncertainty		0.00 usft	Wellhead Elevation:		Ground Level:	4,694.00 usft

<b>Wellbore</b>	Wellbore #1				
<b>Magnetics</b>	<b>Model Name</b>	<b>Sample Date</b>	<b>Declination (°)</b>	<b>Dip Angle (°)</b>	<b>Field Strength (nT)</b>
	IGRF2015	2/2/2020	7.87	66.85	52,133.27967114

<b>Design</b>	Design #2			
<b>Audit Notes:</b>				
<b>Version:</b>	<b>Phase:</b>	PLAN	<b>Tie On Depth:</b>	0.00
<b>Vertical Section:</b>	<b>Depth From (TVD) (usft)</b>	<b>+N/-S (usft)</b>	<b>+E/-W (usft)</b>	<b>Direction (°)</b>
	0.00	0.00	0.00	278.72

<b>Plan Survey Tool Program</b>	<b>Date</b>	3/12/2020		
<b>Depth From (usft)</b>	<b>Depth To (usft)</b>	<b>Survey (Wellbore)</b>	<b>Tool Name</b>	<b>Remarks</b>
1	0.00	17,238.44	Design #2 (Wellbore #1)	MWD
				OWSG MWD - Standard

<b>Plan Sections</b>										
<b>Measured Depth (usft)</b>	<b>Inclination (°)</b>	<b>Azimuth (°)</b>	<b>Vertical Depth (usft)</b>	<b>+N/-S (usft)</b>	<b>+E/-W (usft)</b>	<b>Dogleg Rate (°/100usft)</b>	<b>Build Rate (°/100usft)</b>	<b>Turn Rate (°/100usft)</b>	<b>TFO (°)</b>	<b>Target</b>
0.00	0.00	0.00	0.00	0.00	0.00	0.00	0.00	0.00	0.00	
2,300.00	0.00	0.00	2,300.00	0.00	0.00	0.00	0.00	0.00	0.00	
3,479.36	23.59	18.27	3,446.33	227.28	75.04	2.00	2.00	0.00	18.27	
5,447.15	23.59	18.27	5,249.71	974.98	321.89	0.00	0.00	0.00	0.00	
6,626.51	0.00	0.00	6,396.04	1,202.27	396.93	2.00	-2.00	0.00	180.00	
7,526.51	90.00	271.74	6,969.00	1,219.71	-175.76	10.00	10.00	0.00	0.00	LP-Hungenberg UH
17,238.44	90.00	271.74	6,969.00	1,515.40	-9,883.19	0.00	0.00	0.00	0.00	BHL-Hungenberg U

<b>Database:</b>	Local	<b>Local Co-ordinate Reference:</b>	Well Hungenberg UH 8
<b>Company:</b>	Incline Energy Partners	<b>TVD Reference:</b>	WELL @ 4719.00usft
<b>Project:</b>	Weld County, CO (NAD 83)	<b>MD Reference:</b>	WELL @ 4719.00usft
<b>Site:</b>	Hungenberg	<b>North Reference:</b>	True
<b>Well:</b>	Hungenberg UH 8	<b>Survey Calculation Method:</b>	Minimum Curvature
<b>Wellbore:</b>	Wellbore #1		
<b>Design:</b>	Design #2		

Planned Survey									
Measured Depth (usft)	Inclination (°)	Azimuth (°)	Vertical Depth (usft)	+N/-S (usft)	+E/-W (usft)	Vertical Section (usft)	Dogleg Rate (°/100usft)	Build Rate (°/100usft)	Turn Rate (°/100usft)
0.00	0.00	0.00	0.00	0.00	0.00	0.00	0.00	0.00	0.00
<b>SHL-Hungenberg UH 8</b>									
100.00	0.00	0.00	100.00	0.00	0.00	0.00	0.00	0.00	0.00
200.00	0.00	0.00	200.00	0.00	0.00	0.00	0.00	0.00	0.00
300.00	0.00	0.00	300.00	0.00	0.00	0.00	0.00	0.00	0.00
400.00	0.00	0.00	400.00	0.00	0.00	0.00	0.00	0.00	0.00
500.00	0.00	0.00	500.00	0.00	0.00	0.00	0.00	0.00	0.00
600.00	0.00	0.00	600.00	0.00	0.00	0.00	0.00	0.00	0.00
700.00	0.00	0.00	700.00	0.00	0.00	0.00	0.00	0.00	0.00
800.00	0.00	0.00	800.00	0.00	0.00	0.00	0.00	0.00	0.00
900.00	0.00	0.00	900.00	0.00	0.00	0.00	0.00	0.00	0.00
1,000.00	0.00	0.00	1,000.00	0.00	0.00	0.00	0.00	0.00	0.00
1,100.00	0.00	0.00	1,100.00	0.00	0.00	0.00	0.00	0.00	0.00
1,200.00	0.00	0.00	1,200.00	0.00	0.00	0.00	0.00	0.00	0.00
1,300.00	0.00	0.00	1,300.00	0.00	0.00	0.00	0.00	0.00	0.00
1,400.00	0.00	0.00	1,400.00	0.00	0.00	0.00	0.00	0.00	0.00
1,500.00	0.00	0.00	1,500.00	0.00	0.00	0.00	0.00	0.00	0.00
1,600.00	0.00	0.00	1,600.00	0.00	0.00	0.00	0.00	0.00	0.00
1,700.00	0.00	0.00	1,700.00	0.00	0.00	0.00	0.00	0.00	0.00
1,800.00	0.00	0.00	1,800.00	0.00	0.00	0.00	0.00	0.00	0.00
1,900.00	0.00	0.00	1,900.00	0.00	0.00	0.00	0.00	0.00	0.00
2,000.00	0.00	0.00	2,000.00	0.00	0.00	0.00	0.00	0.00	0.00
2,100.00	0.00	0.00	2,100.00	0.00	0.00	0.00	0.00	0.00	0.00
2,200.00	0.00	0.00	2,200.00	0.00	0.00	0.00	0.00	0.00	0.00
2,300.00	0.00	0.00	2,300.00	0.00	0.00	0.00	0.00	0.00	0.00
<b>Build: 2°/100' @ 2300.00' MD</b>									
2,400.00	2.00	18.27	2,399.98	1.66	0.55	-0.29	2.00	2.00	0.00
2,500.00	4.00	18.27	2,499.84	6.63	2.19	-1.16	2.00	2.00	0.00
2,600.00	6.00	18.27	2,599.45	14.90	4.92	-2.60	2.00	2.00	0.00
2,700.00	8.00	18.27	2,698.70	26.47	8.74	-4.63	2.00	2.00	0.00
2,800.00	10.00	18.27	2,797.47	41.33	13.64	-7.22	2.00	2.00	0.00
2,900.00	12.00	18.27	2,895.62	59.45	19.63	-10.39	2.00	2.00	0.00
3,000.00	14.00	18.27	2,993.06	80.81	26.68	-14.12	2.00	2.00	0.00
3,100.00	16.00	18.27	3,089.64	105.38	34.79	-18.42	2.00	2.00	0.00
3,200.00	18.00	18.27	3,185.27	133.14	43.96	-23.27	2.00	2.00	0.00
3,300.00	20.00	18.27	3,279.82	164.06	54.16	-28.67	2.00	2.00	0.00
3,400.00	22.00	18.27	3,373.17	198.09	65.40	-34.62	2.00	2.00	0.00
3,479.36	23.59	18.27	3,446.33	227.28	75.04	-39.72	2.00	2.00	0.00
<b>Hold: 23.59° Inc, 18.27° Azm</b>									
3,500.00	23.59	18.27	3,465.24	235.12	77.63	-41.09	0.00	0.00	0.00
3,600.00	23.59	18.27	3,556.89	273.12	90.17	-47.74	0.00	0.00	0.00
3,700.00	23.59	18.27	3,648.53	311.12	102.72	-54.38	0.00	0.00	0.00
3,800.00	23.59	18.27	3,740.18	349.11	115.26	-61.02	0.00	0.00	0.00
3,900.00	23.59	18.27	3,831.83	387.11	127.81	-67.66	0.00	0.00	0.00
4,000.00	23.59	18.27	3,923.47	425.11	140.35	-74.30	0.00	0.00	0.00
4,100.00	23.59	18.27	4,015.12	463.11	152.90	-80.94	0.00	0.00	0.00
4,200.00	23.59	18.27	4,106.76	501.10	165.44	-87.58	0.00	0.00	0.00
4,300.00	23.59	18.27	4,198.41	539.10	177.99	-94.22	0.00	0.00	0.00
4,400.00	23.59	18.27	4,290.05	577.10	190.53	-100.86	0.00	0.00	0.00
4,500.00	23.59	18.27	4,381.70	615.10	203.08	-107.51	0.00	0.00	0.00
4,600.00	23.59	18.27	4,473.34	653.09	215.62	-114.15	0.00	0.00	0.00
4,700.00	23.59	18.27	4,564.99	691.09	228.17	-120.79	0.00	0.00	0.00
4,800.00	23.59	18.27	4,656.63	729.09	240.71	-127.43	0.00	0.00	0.00

<b>Database:</b>	Local	<b>Local Co-ordinate Reference:</b>	Well Hungenberg UH 8
<b>Company:</b>	Incline Energy Partners	<b>TVD Reference:</b>	WELL @ 4719.00usft
<b>Project:</b>	Weld County, CO (NAD 83)	<b>MD Reference:</b>	WELL @ 4719.00usft
<b>Site:</b>	Hungenberg	<b>North Reference:</b>	True
<b>Well:</b>	Hungenberg UH 8	<b>Survey Calculation Method:</b>	Minimum Curvature
<b>Wellbore:</b>	Wellbore #1		
<b>Design:</b>	Design #2		

Planned Survey									
Measured Depth (usft)	Inclination (°)	Azimuth (°)	Vertical Depth (usft)	+N/-S (usft)	+E/-W (usft)	Vertical Section (usft)	Dogleg Rate (°/100usft)	Build Rate (°/100usft)	Turn Rate (°/100usft)
4,900.00	23.59	18.27	4,748.28	767.08	253.26	-134.07	0.00	0.00	0.00
5,000.00	23.59	18.27	4,839.92	805.08	265.80	-140.71	0.00	0.00	0.00
5,100.00	23.59	18.27	4,931.57	843.08	278.34	-147.35	0.00	0.00	0.00
5,200.00	23.59	18.27	5,023.21	881.08	290.89	-153.99	0.00	0.00	0.00
5,300.00	23.59	18.27	5,114.86	919.07	303.43	-160.63	0.00	0.00	0.00
5,400.00	23.59	18.27	5,206.50	957.07	315.98	-167.28	0.00	0.00	0.00
5,447.15	23.59	18.27	5,249.71	974.98	321.89	-170.41	0.00	0.00	0.00
<b>Drop: 2°/100' @ 5447.15' MD</b>									
5,500.00	22.53	18.27	5,298.34	994.64	328.38	-173.84	2.00	-2.00	0.00
5,600.00	20.53	18.27	5,391.36	1,029.49	339.89	-179.93	2.00	-2.00	0.00
5,700.00	18.53	18.27	5,485.60	1,061.23	350.37	-185.48	2.00	-2.00	0.00
5,800.00	16.53	18.27	5,580.95	1,089.83	359.81	-190.48	2.00	-2.00	0.00
5,900.00	14.53	18.27	5,677.29	1,115.26	368.21	-194.92	2.00	-2.00	0.00
6,000.00	12.53	18.27	5,774.51	1,137.47	375.54	-198.81	2.00	-2.00	0.00
6,100.00	10.53	18.27	5,872.49	1,156.45	381.81	-202.12	2.00	-2.00	0.00
6,200.00	8.53	18.27	5,971.11	1,172.17	387.00	-204.87	2.00	-2.00	0.00
6,300.00	6.53	18.27	6,070.24	1,184.62	391.10	-207.05	2.00	-2.00	0.00
6,400.00	4.53	18.27	6,169.77	1,193.77	394.13	-208.65	2.00	-2.00	0.00
6,500.00	2.53	18.27	6,269.57	1,199.61	396.06	-209.67	2.00	-2.00	0.00
6,600.00	0.53	18.27	6,369.53	1,202.15	396.89	-210.11	2.00	-2.00	0.00
6,626.51	0.00	0.00	6,396.04	1,202.27	396.93	-210.13	2.00	-2.00	0.00
<b>KOP: 10°/100' @ 6626.51' MD</b>									
6,650.00	2.35	271.74	6,419.53	1,202.28	396.45	-209.65	10.00	10.00	0.00
6,700.00	7.35	271.74	6,469.33	1,202.41	392.23	-205.46	10.00	10.00	0.00
6,750.00	12.35	271.74	6,518.58	1,202.67	383.68	-196.97	10.00	10.00	0.00
6,800.00	17.35	271.74	6,566.89	1,203.06	370.88	-184.26	10.00	10.00	0.00
6,850.00	22.35	271.74	6,613.91	1,203.58	353.91	-167.41	10.00	10.00	0.00
6,900.00	27.35	271.74	6,659.26	1,204.22	332.92	-146.56	10.00	10.00	0.00
6,950.00	32.35	271.74	6,702.62	1,204.97	308.05	-121.87	10.00	10.00	0.00
7,000.00	37.35	271.74	6,743.64	1,205.84	279.50	-93.52	10.00	10.00	0.00
7,050.00	42.35	271.74	6,782.01	1,206.82	247.49	-61.73	10.00	10.00	0.00
7,100.00	47.35	271.74	6,817.45	1,207.89	212.26	-26.74	10.00	10.00	0.00
7,150.00	52.35	271.74	6,849.68	1,209.05	174.07	11.19	10.00	10.00	0.00
7,200.00	57.35	271.74	6,878.46	1,210.30	133.22	51.75	10.00	10.00	0.00
7,250.00	62.35	271.74	6,903.56	1,211.61	90.02	94.65	10.00	10.00	0.00
7,300.00	67.35	271.74	6,924.81	1,212.99	44.79	139.57	10.00	10.00	0.00
7,350.00	72.35	271.74	6,942.03	1,214.42	-2.11	186.14	10.00	10.00	0.00
7,400.00	77.35	271.74	6,955.09	1,215.89	-50.33	234.03	10.00	10.00	0.00
7,450.00	82.35	271.74	6,963.90	1,217.39	-99.51	282.87	10.00	10.00	0.00
7,500.00	87.35	271.74	6,968.39	1,218.90	-149.27	332.28	10.00	10.00	0.00
7,526.51	90.00	271.74	6,969.00	1,219.71	-175.76	358.59	10.00	10.00	0.00
<b>LP: 7526.51' MD, 90.00° Inc, 271.74° Azm - LP-Hungenberg UH 8</b>									
7,600.00	90.00	271.74	6,969.00	1,221.95	-249.22	431.54	0.00	0.00	0.00
7,700.00	90.00	271.74	6,969.00	1,224.99	-349.17	530.80	0.00	0.00	0.00
7,800.00	90.00	271.74	6,969.00	1,228.04	-449.12	630.06	0.00	0.00	0.00
7,900.00	90.00	271.74	6,969.00	1,231.08	-549.08	729.32	0.00	0.00	0.00
8,000.00	90.00	271.74	6,969.00	1,234.13	-649.03	828.58	0.00	0.00	0.00
8,100.00	90.00	271.74	6,969.00	1,237.17	-748.99	927.84	0.00	0.00	0.00
8,200.00	90.00	271.74	6,969.00	1,240.22	-848.94	1,027.10	0.00	0.00	0.00
8,300.00	90.00	271.74	6,969.00	1,243.26	-948.89	1,126.36	0.00	0.00	0.00
8,400.00	90.00	271.74	6,969.00	1,246.30	-1,048.85	1,225.62	0.00	0.00	0.00
8,500.00	90.00	271.74	6,969.00	1,249.35	-1,148.80	1,324.88	0.00	0.00	0.00
8,600.00	90.00	271.74	6,969.00	1,252.39	-1,248.75	1,424.14	0.00	0.00	0.00

<b>Database:</b>	Local	<b>Local Co-ordinate Reference:</b>	Well Hungenberg UH 8
<b>Company:</b>	Incline Energy Partners	<b>TVD Reference:</b>	WELL @ 4719.00usft
<b>Project:</b>	Weld County, CO (NAD 83)	<b>MD Reference:</b>	WELL @ 4719.00usft
<b>Site:</b>	Hungenberg	<b>North Reference:</b>	True
<b>Well:</b>	Hungenberg UH 8	<b>Survey Calculation Method:</b>	Minimum Curvature
<b>Wellbore:</b>	Wellbore #1		
<b>Design:</b>	Design #2		

Planned Survey										
Measured Depth (usft)	Inclination (°)	Azimuth (°)	Vertical Depth (usft)	+N/-S (usft)	+E/-W (usft)	Vertical Section (usft)	Dogleg Rate (°/100usft)	Build Rate (°/100usft)	Turn Rate (°/100usft)	
8,700.00	90.00	271.74	6,969.00	1,255.44	-1,348.71	1,523.40	0.00	0.00	0.00	
8,800.00	90.00	271.74	6,969.00	1,258.48	-1,448.66	1,622.66	0.00	0.00	0.00	
8,900.00	90.00	271.74	6,969.00	1,261.53	-1,548.61	1,721.92	0.00	0.00	0.00	
9,000.00	90.00	271.74	6,969.00	1,264.57	-1,648.57	1,821.18	0.00	0.00	0.00	
9,100.00	90.00	271.74	6,969.00	1,267.62	-1,748.52	1,920.44	0.00	0.00	0.00	
9,200.00	90.00	271.74	6,969.00	1,270.66	-1,848.48	2,019.70	0.00	0.00	0.00	
9,300.00	90.00	271.74	6,969.00	1,273.71	-1,948.43	2,118.96	0.00	0.00	0.00	
9,400.00	90.00	271.74	6,969.00	1,276.75	-2,048.38	2,218.22	0.00	0.00	0.00	
9,500.00	90.00	271.74	6,969.00	1,279.79	-2,148.34	2,317.48	0.00	0.00	0.00	
9,600.00	90.00	271.74	6,969.00	1,282.84	-2,248.29	2,416.74	0.00	0.00	0.00	
9,700.00	90.00	271.74	6,969.00	1,285.88	-2,348.24	2,516.00	0.00	0.00	0.00	
9,800.00	90.00	271.74	6,969.00	1,288.93	-2,448.20	2,615.27	0.00	0.00	0.00	
9,900.00	90.00	271.74	6,969.00	1,291.97	-2,548.15	2,714.53	0.00	0.00	0.00	
10,000.00	90.00	271.74	6,969.00	1,295.02	-2,648.10	2,813.79	0.00	0.00	0.00	
10,100.00	90.00	271.74	6,969.00	1,298.06	-2,748.06	2,913.05	0.00	0.00	0.00	
10,200.00	90.00	271.74	6,969.00	1,301.11	-2,848.01	3,012.31	0.00	0.00	0.00	
10,300.00	90.00	271.74	6,969.00	1,304.15	-2,947.97	3,111.57	0.00	0.00	0.00	
10,400.00	90.00	271.74	6,969.00	1,307.20	-3,047.92	3,210.83	0.00	0.00	0.00	
10,500.00	90.00	271.74	6,969.00	1,310.24	-3,147.87	3,310.09	0.00	0.00	0.00	
10,600.00	90.00	271.74	6,969.00	1,313.29	-3,247.83	3,409.35	0.00	0.00	0.00	
10,700.00	90.00	271.74	6,969.00	1,316.33	-3,347.78	3,508.61	0.00	0.00	0.00	
10,800.00	90.00	271.74	6,969.00	1,319.37	-3,447.73	3,607.87	0.00	0.00	0.00	
10,900.00	90.00	271.74	6,969.00	1,322.42	-3,547.69	3,707.13	0.00	0.00	0.00	
11,000.00	90.00	271.74	6,969.00	1,325.46	-3,647.64	3,806.39	0.00	0.00	0.00	
11,100.00	90.00	271.74	6,969.00	1,328.51	-3,747.59	3,905.65	0.00	0.00	0.00	
11,200.00	90.00	271.74	6,969.00	1,331.55	-3,847.55	4,004.91	0.00	0.00	0.00	
11,300.00	90.00	271.74	6,969.00	1,334.60	-3,947.50	4,104.17	0.00	0.00	0.00	
11,400.00	90.00	271.74	6,969.00	1,337.64	-4,047.46	4,203.43	0.00	0.00	0.00	
11,500.00	90.00	271.74	6,969.00	1,340.69	-4,147.41	4,302.69	0.00	0.00	0.00	
11,600.00	90.00	271.74	6,969.00	1,343.73	-4,247.36	4,401.95	0.00	0.00	0.00	
11,700.00	90.00	271.74	6,969.00	1,346.78	-4,347.32	4,501.21	0.00	0.00	0.00	
11,800.00	90.00	271.74	6,969.00	1,349.82	-4,447.27	4,600.47	0.00	0.00	0.00	
11,900.00	90.00	271.74	6,969.00	1,352.87	-4,547.22	4,699.73	0.00	0.00	0.00	
12,000.00	90.00	271.74	6,969.00	1,355.91	-4,647.18	4,798.99	0.00	0.00	0.00	
12,100.00	90.00	271.74	6,969.00	1,358.95	-4,747.13	4,898.26	0.00	0.00	0.00	
12,200.00	90.00	271.74	6,969.00	1,362.00	-4,847.08	4,997.52	0.00	0.00	0.00	
12,300.00	90.00	271.74	6,969.00	1,365.04	-4,947.04	5,096.78	0.00	0.00	0.00	
12,400.00	90.00	271.74	6,969.00	1,368.09	-5,046.99	5,196.04	0.00	0.00	0.00	
12,500.00	90.00	271.74	6,969.00	1,371.13	-5,146.95	5,295.30	0.00	0.00	0.00	
12,600.00	90.00	271.74	6,969.00	1,374.18	-5,246.90	5,394.56	0.00	0.00	0.00	
12,700.00	90.00	271.74	6,969.00	1,377.22	-5,346.85	5,493.82	0.00	0.00	0.00	
12,800.00	90.00	271.74	6,969.00	1,380.27	-5,446.81	5,593.08	0.00	0.00	0.00	
12,900.00	90.00	271.74	6,969.00	1,383.31	-5,546.76	5,692.34	0.00	0.00	0.00	
13,000.00	90.00	271.74	6,969.00	1,386.36	-5,646.71	5,791.60	0.00	0.00	0.00	
13,100.00	90.00	271.74	6,969.00	1,389.40	-5,746.67	5,890.86	0.00	0.00	0.00	
13,200.00	90.00	271.74	6,969.00	1,392.44	-5,846.62	5,990.12	0.00	0.00	0.00	
13,300.00	90.00	271.74	6,969.00	1,395.49	-5,946.57	6,089.38	0.00	0.00	0.00	
13,400.00	90.00	271.74	6,969.00	1,398.53	-6,046.53	6,188.64	0.00	0.00	0.00	
13,500.00	90.00	271.74	6,969.00	1,401.58	-6,146.48	6,287.90	0.00	0.00	0.00	
13,600.00	90.00	271.74	6,969.00	1,404.62	-6,246.44	6,387.16	0.00	0.00	0.00	
13,700.00	90.00	271.74	6,969.00	1,407.67	-6,346.39	6,486.42	0.00	0.00	0.00	
13,800.00	90.00	271.74	6,969.00	1,410.71	-6,446.34	6,585.68	0.00	0.00	0.00	
13,900.00	90.00	271.74	6,969.00	1,413.76	-6,546.30	6,684.94	0.00	0.00	0.00	
14,000.00	90.00	271.74	6,969.00	1,416.80	-6,646.25	6,784.20	0.00	0.00	0.00	

<b>Database:</b>	Local	<b>Local Co-ordinate Reference:</b>	Well Hungenberg UH 8
<b>Company:</b>	Incline Energy Partners	<b>TVD Reference:</b>	WELL @ 4719.00usft
<b>Project:</b>	Weld County, CO (NAD 83)	<b>MD Reference:</b>	WELL @ 4719.00usft
<b>Site:</b>	Hungenberg	<b>North Reference:</b>	True
<b>Well:</b>	Hungenberg UH 8	<b>Survey Calculation Method:</b>	Minimum Curvature
<b>Wellbore:</b>	Wellbore #1		
<b>Design:</b>	Design #2		

Planned Survey									
Measured Depth (usft)	Inclination (°)	Azimuth (°)	Vertical Depth (usft)	+N/-S (usft)	+E/-W (usft)	Vertical Section (usft)	Dogleg Rate (°/100usft)	Build Rate (°/100usft)	Turn Rate (°/100usft)
14,100.00	90.00	271.74	6,969.00	1,419.85	-6,746.20	6,883.46	0.00	0.00	0.00
14,200.00	90.00	271.74	6,969.00	1,422.89	-6,846.16	6,982.72	0.00	0.00	0.00
14,300.00	90.00	271.74	6,969.00	1,425.94	-6,946.11	7,081.98	0.00	0.00	0.00
14,400.00	90.00	271.74	6,969.00	1,428.98	-7,046.06	7,181.24	0.00	0.00	0.00
14,500.00	90.00	271.74	6,969.00	1,432.02	-7,146.02	7,280.51	0.00	0.00	0.00
14,600.00	90.00	271.74	6,969.00	1,435.07	-7,245.97	7,379.77	0.00	0.00	0.00
14,700.00	90.00	271.74	6,969.00	1,438.11	-7,345.93	7,479.03	0.00	0.00	0.00
14,800.00	90.00	271.74	6,969.00	1,441.16	-7,445.88	7,578.29	0.00	0.00	0.00
14,900.00	90.00	271.74	6,969.00	1,444.20	-7,545.83	7,677.55	0.00	0.00	0.00
15,000.00	90.00	271.74	6,969.00	1,447.25	-7,645.79	7,776.81	0.00	0.00	0.00
15,100.00	90.00	271.74	6,969.00	1,450.29	-7,745.74	7,876.07	0.00	0.00	0.00
15,200.00	90.00	271.74	6,969.00	1,453.34	-7,845.69	7,975.33	0.00	0.00	0.00
15,300.00	90.00	271.74	6,969.00	1,456.38	-7,945.65	8,074.59	0.00	0.00	0.00
15,400.00	90.00	271.74	6,969.00	1,459.43	-8,045.60	8,173.85	0.00	0.00	0.00
15,500.00	90.00	271.74	6,969.00	1,462.47	-8,145.55	8,273.11	0.00	0.00	0.00
15,600.00	90.00	271.74	6,969.00	1,465.51	-8,245.51	8,372.37	0.00	0.00	0.00
15,700.00	90.00	271.74	6,969.00	1,468.56	-8,345.46	8,471.63	0.00	0.00	0.00
15,800.00	90.00	271.74	6,969.00	1,471.60	-8,445.42	8,570.89	0.00	0.00	0.00
15,900.00	90.00	271.74	6,969.00	1,474.65	-8,545.37	8,670.15	0.00	0.00	0.00
16,000.00	90.00	271.74	6,969.00	1,477.69	-8,645.32	8,769.41	0.00	0.00	0.00
16,100.00	90.00	271.74	6,969.00	1,480.74	-8,745.28	8,868.67	0.00	0.00	0.00
16,200.00	90.00	271.74	6,969.00	1,483.78	-8,845.23	8,967.93	0.00	0.00	0.00
16,300.00	90.00	271.74	6,969.00	1,486.83	-8,945.18	9,067.19	0.00	0.00	0.00
16,400.00	90.00	271.74	6,969.00	1,489.87	-9,045.14	9,166.45	0.00	0.00	0.00
16,500.00	90.00	271.74	6,969.00	1,492.92	-9,145.09	9,265.71	0.00	0.00	0.00
16,600.00	90.00	271.74	6,969.00	1,495.96	-9,245.04	9,364.97	0.00	0.00	0.00
16,700.00	90.00	271.74	6,969.00	1,499.01	-9,345.00	9,464.23	0.00	0.00	0.00
16,800.00	90.00	271.74	6,969.00	1,502.05	-9,444.95	9,563.50	0.00	0.00	0.00
16,900.00	90.00	271.74	6,969.00	1,505.09	-9,544.91	9,662.76	0.00	0.00	0.00
17,000.00	90.00	271.74	6,969.00	1,508.14	-9,644.86	9,762.02	0.00	0.00	0.00
17,100.00	90.00	271.74	6,969.00	1,511.18	-9,744.81	9,861.28	0.00	0.00	0.00
17,200.00	90.00	271.74	6,969.00	1,514.23	-9,844.77	9,960.54	0.00	0.00	0.00
17,238.44	90.00	271.74	6,969.00	1,515.40	-9,883.19	9,998.70	0.00	0.00	0.00
TD @ 17238.44' MD/6969.00' TVD - BHL-Hungenberg UH 8									

Design Targets									
Target Name	Dip Angle (°)	Dip Dir. (°)	TVD (usft)	+N/-S (usft)	+E/-W (usft)	Northing (usft)	Easting (usft)	Latitude	Longitude
SHL-Hungenberg UH - hit/miss target - Shape - Point	0.00	0.00	0.00	0.00	0.00	1,408,906.83	3,239,100.25	40.452671	-104.640822
BHL-Hungenberg UH - plan hits target center - Point	0.00	0.00	6,969.00	1,515.40	-9,883.19	1,410,326.40	3,229,202.84	40.456826	-104.676338
LP-Hungenberg UH 8 - plan hits target center - Point	0.00	0.00	6,969.00	1,219.71	-175.76	1,410,124.78	3,238,912.68	40.456019	-104.641454

<b>Database:</b>	Local	<b>Local Co-ordinate Reference:</b>	Well Hungenberg UH 8
<b>Company:</b>	Incline Energy Partners	<b>TVD Reference:</b>	WELL @ 4719.00usft
<b>Project:</b>	Weld County, CO (NAD 83)	<b>MD Reference:</b>	WELL @ 4719.00usft
<b>Site:</b>	Hungenberg	<b>North Reference:</b>	True
<b>Well:</b>	Hungenberg UH 8	<b>Survey Calculation Method:</b>	Minimum Curvature
<b>Wellbore:</b>	Wellbore #1		
<b>Design:</b>	Design #2		

Formations					
Measured Depth (usft)	Vertical Depth (usft)	Name	Lithology	Dip (°)	Dip Direction (°)
6,992.94	6,738.00	Niobrara A			
7,163.84	6,858.00	Niobrara B			
7,305.77	6,927.00	Niobrara C			

Plan Annotations					
Measured Depth (usft)	Vertical Depth (usft)	Local Coordinates			
		+N/-S (usft)	+E/-W (usft)	Comment	
2,300.00	2,300.00	0.00	0.00	Build: 2°/100' @ 2300.00' MD	
3,479.36	3,446.33	227.28	75.04	Hold: 23.59° Inc, 18.27° Azm	
5,447.15	5,249.71	974.98	321.89	Drop: 2°/100' @ 5447.15' MD	
6,626.51	6,396.04	1,202.27	396.93	KOP: 10°/100' @ 6626.51' MD	
7,526.51	6,969.00	1,219.71	-175.76	LP: 7526.51' MD, 90.00° Inc, 271.74° Azm	
17,238.44	6,969.00	1,515.40	-9,883.19	TD @ 17238.44' MD/6969.00' TVD	