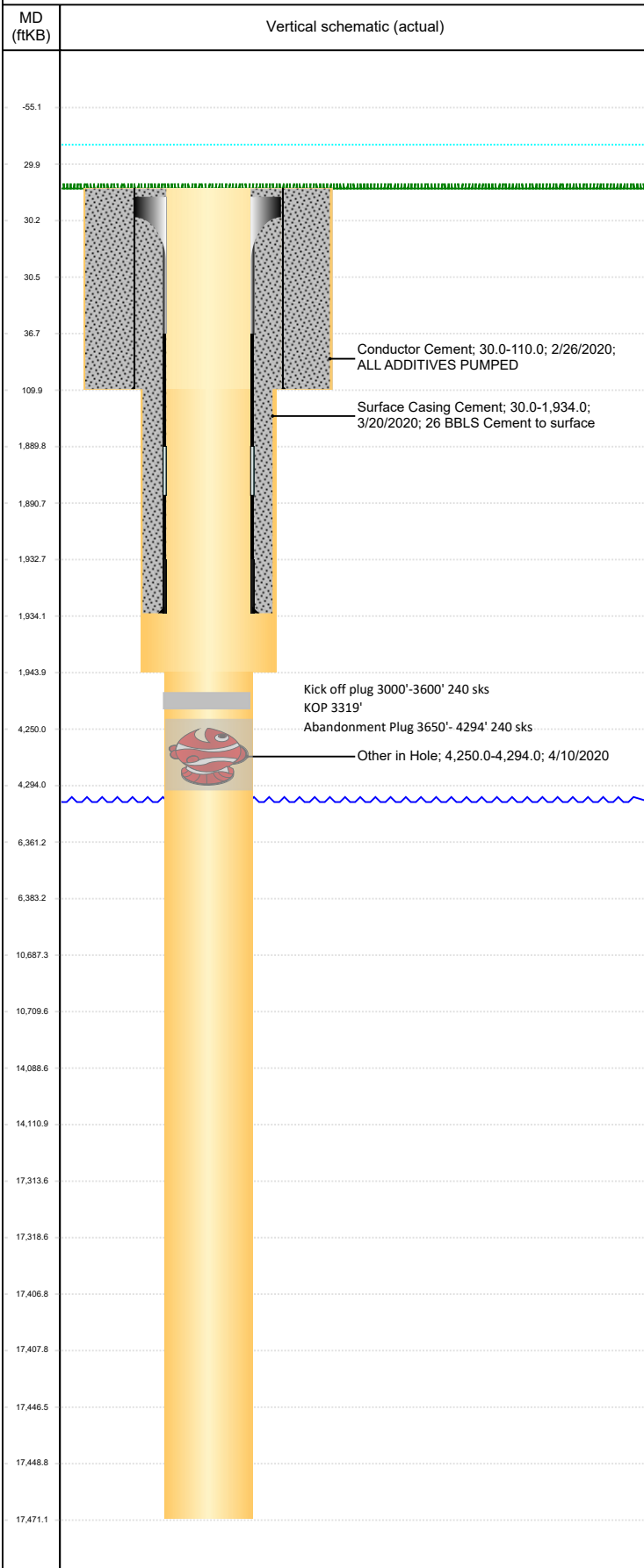


Well Name: GUTTERSEN D35-770

HORIZONTAL, ORIGINAL HOLE, 4/10/2020 11:37:51 AM



Well Header									
API 05-123-48593		Business Unit DJ BASIN			District 15		Well Config HORIZONTAL		
KB - GL / MSL (ft... 30.00		Spud Date 3/20/2020		P & A Date		Well Production Status PW			SoRT No
Comment Resistivity ran on sister pad D23-14-B, on the Guttersen State D23-781.									
Surface Location (Congressional)									
Qtr 3 SE	Qtr 4 SW	Section 23	Twnshp 3	Twnsh... N	Range 64	Rng E/... W	Actual Latitude (°)		Actual Longitude (°)
Wellbore Sections									
Section Des			Size (in)			Act Top, MD (ftKB)		Act Btm, MD (ftKB)	
CONDUCTOR			26			30		110	
SURFACE			13 1/2			110		1,944	
PRODUCTION			8 1/2			1944		17,471	
Casing Strings									
Csg Des		Run Date		OD (in)	Wt/Len (lb/ft)	Grade	Top, MD (ftKB)	MD (ftKB)	
CONDUCTOR		2/26/2020		16	36.94	A-52A	30.0	110.0	
SURFACE		3/20/2020		9 5/8	36.00	J-55	30.0	1,934.0	
Cement									
Des				Start Date		Top (ftKB)		Btm (ftKB)	
Conductor Cement				2/26/2020		30.0		110.0	
Surface Casing Cement				3/20/2020		30.0		1,934.0	
Zone Statuses									
Zone Name	Status Date	Status	Fluid Type	Job			Prod Method		
Other In Hole									
Run Date		Des			Make		OD (in)	Top (ftKB)	Btm (ftKB)
4/10/2020							8 1/2	4,250.0	4,294.0
Logs									
Date		Type				Top, MD (ftKB)		Btm, MD (ftKB)	