

TICKET	BCO-2003-0060
DATE	3/12/2020
CREW INFORMATION	
SUPERVISOR	Francisco Flores
PUMP UNIT	44-5024
NUMBERS	
ARRIVAL (D&T)	3/12/20 2:00 PM
DEPARTURE (D&T)	3/12/20 5:00 PM

[illegible][illegible]

Customer Name Printed _____

Customer Signature _____

Date Signed _____



Job Summary

Ticket Number	Ticket Date
TN# BCO-2003-0060	3/12/2020

COUNTY	COMPANY	API Number
WELD	PDC ENERGY	512328116
WELL NAME	RIG	JOB TYPE
MOODY 41-32D	Ensign 312	CM-P2A-PERM.
SURFACE WELL LOCATION	CJES Field Supervisor	CUSTOMER REP
40.53375 -104.79975	Francisco Flores	Matthew McGraw

EMPLOYEES
<i>Jake Guseman</i>
<i>Jared Cross</i>
<i>Marten Martens</i>

WELL PROFILE

Max Treating Pressure (psi):	1000	Bottom Hole Static Temperature (°F):	
Bottom Hole Circulating Temperature (°F):		Well Type:	Oil

Open Hole

1	Size (in)	TMD From (ft)	TMD to (ft)	TVD From (Ft)	TVD to (Ft)
2	Size (in)	TMD From (ft)	TMD to (ft)	TVD From (Ft)	TVD to (Ft)

Casing/Tubing/Drill Pipe

Type	Size (in)	Weight (lb/ft)	Grade	TMD From (ft)	TMD to (ft)	TVD From (Ft)	TVD to (Ft)
Production	4.5	11.6	J55	2665	2285		
Type	Size (in)	Weight (lb/ft)	Grade	TMD From (ft)	TMD to (ft)	TVD From (Ft)	TVD to (Ft)
Tubing	2.375	4.7	J55	2665	0		
Type	Size (in)	Weight (lb/ft)	Grade	TMD From (ft)	TMD to (ft)	TVD From (Ft)	TVD to (Ft)

CEMENT DATA

Stage 1:	From Depth (ft):	2665	To Depth (ft):	2285
Type: Balance Plug	Volume (sacks):	25	Volume (bbls):	5.9

Cement & Additives:	Density (ppg)	Yield (ft³/sk)	Water Req.
100% CJ922	14.8	1.33	6.32

Stage 2:	From Depth (ft):	1592	To Depth (ft):	0
Type: Surface Plug	Volume (sacks):	104	Volume (bbls):	24.6

Cement & Additives:	Density (ppg)	Yield (ft³/sk)	Water Req.
100% CJ922	14.8	1.33	6.32

SUMMARY

	Stage 1	Stage 2
Preflushes:		
9 bbls of Fresh Water	Calculated Displacement (bbl): 8.8	
	Actual Displacement (bbl): 8.8	
Total Preflush/Spacer Volume (bbl): 9	Plug Bump (Y/N):	Bump Pressure (psi):
Total Slurry Volume (bbl): 34.5	Lost Returns (Y/N): N (if Y, when)	
Total Fluid Pumped: 52.3		
Returns to Surface: Cement 2 bbls		

Job Notes (fluids pumped / procedures / tools / etc.): Balance Plug- End of tubing@2665'. Mix & pump 25sx@14.8ppg 1.33Y. 381' of coverage. ETOC@2284'. Surface plug- End of tubing@1592'. Mix & pump 104sx@14.8ppg 1.33Y. Brought cement to surface. Pumped job per customers request. Job went well. Thank you!

Customer Representative Signature: Thank You For Using NexTier Completion Solutions

[illegible]

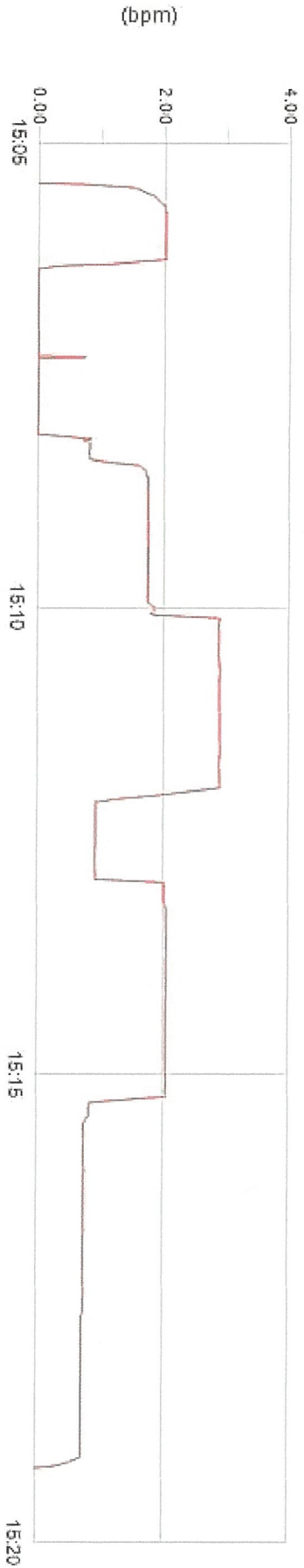
NEXTIER

[illegible]

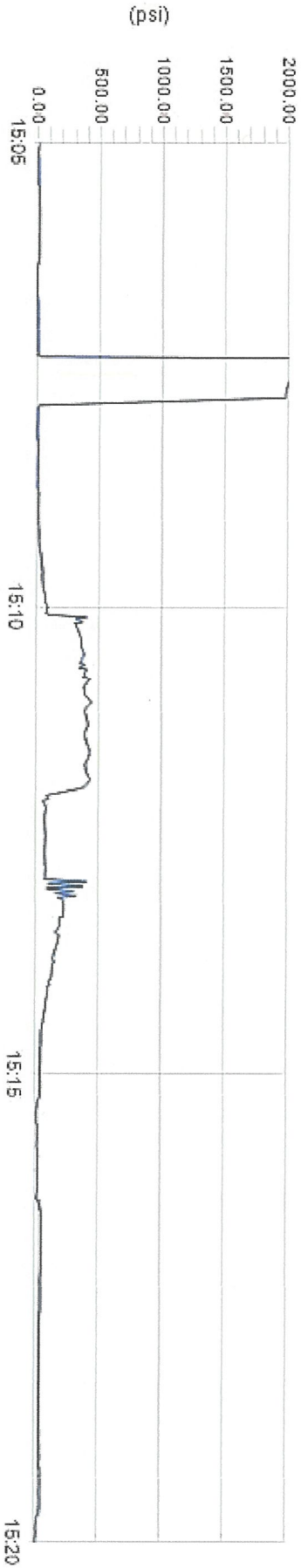


Client	PDC Energy	Client Rep	Matt McGraw	Supervisor	Francisco Flores
Ticket No.	20030060	Well Name	Moody 41-32D	Unit No.	445024
Location		Job Type	Abandonment Plugs	Service District	Brighton
Comments	25sx@14.8ppg 1.33Y			Job Date	03/12/2020

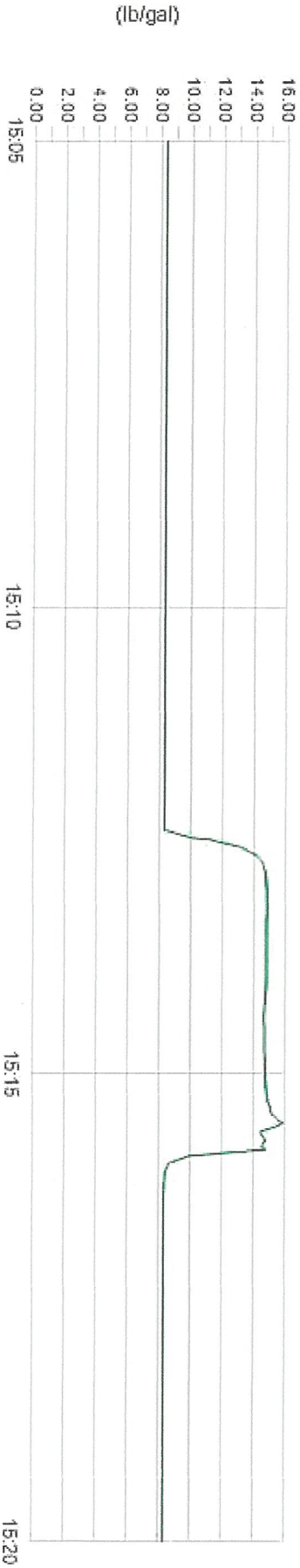
Unit 445024 Rate Total



Unit 445024 Pump Pressure



Unit 445024 Density





Client
Ticket No.
Location
Comments

PDC Energy
20030060
104sx@14.8ppg 1.33Y
Surface Plug

Client Rep
Well Name
Job Type

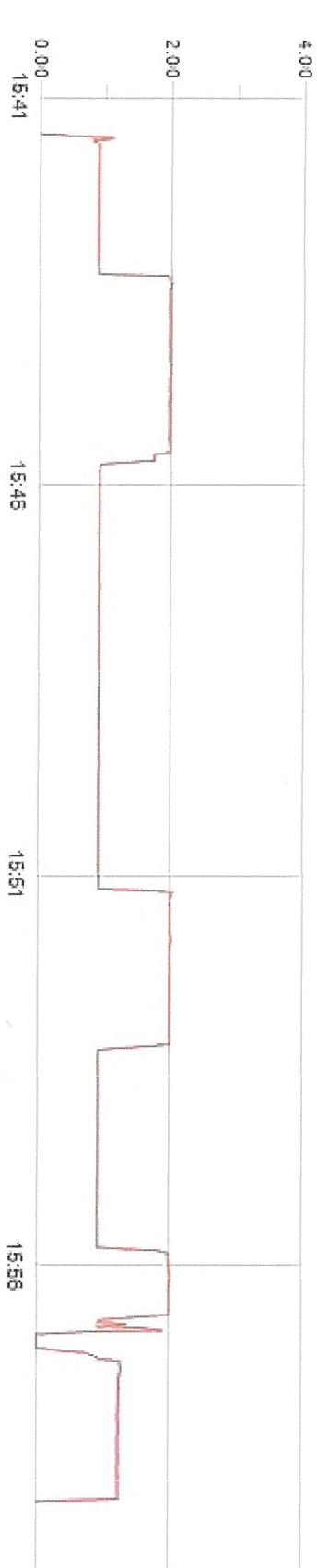
Matt McGraw
Moody 41-32D
Abandonment Plugs

Supervisor
Unit No.
Service District
Job Date

Francisco Flores
445024
Brighton
03/12/2020

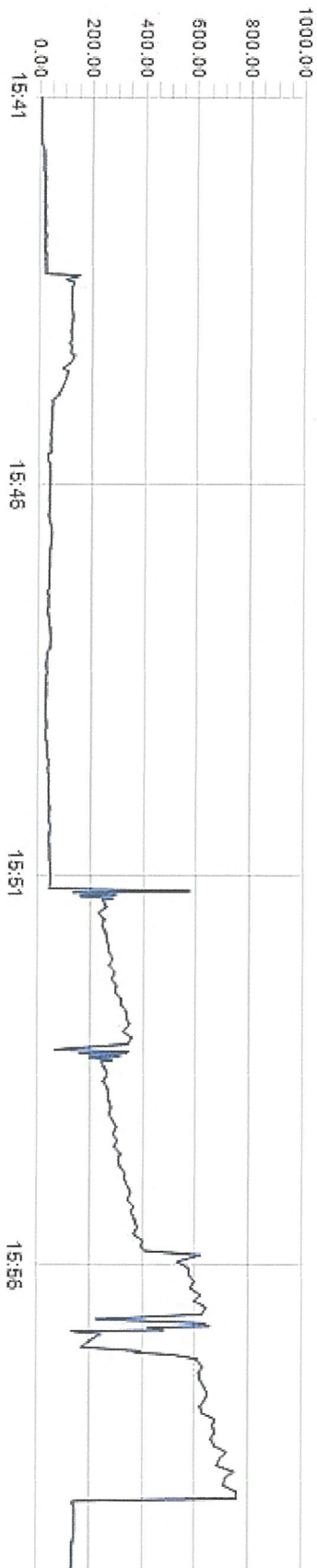
Unit 445024 Rate Total

(bpm)



Unit 445024 Pump Pressure

(psi)



Unit 445024 Density

(lb/gal)

