

Reclamation and Stormwater Inspection

April 8, 2020

Operator: PETROSHARE CORPORATION- 10454

Location ID: 333075

Inspection Document #: 697501291

Adams County, CO

NENW Section 2 T1S R67W

Chris Binschus
Reclamation Specialist, COGCC



COLORADO
Oil & Gas Conservation
Commission

Department of Natural Resources

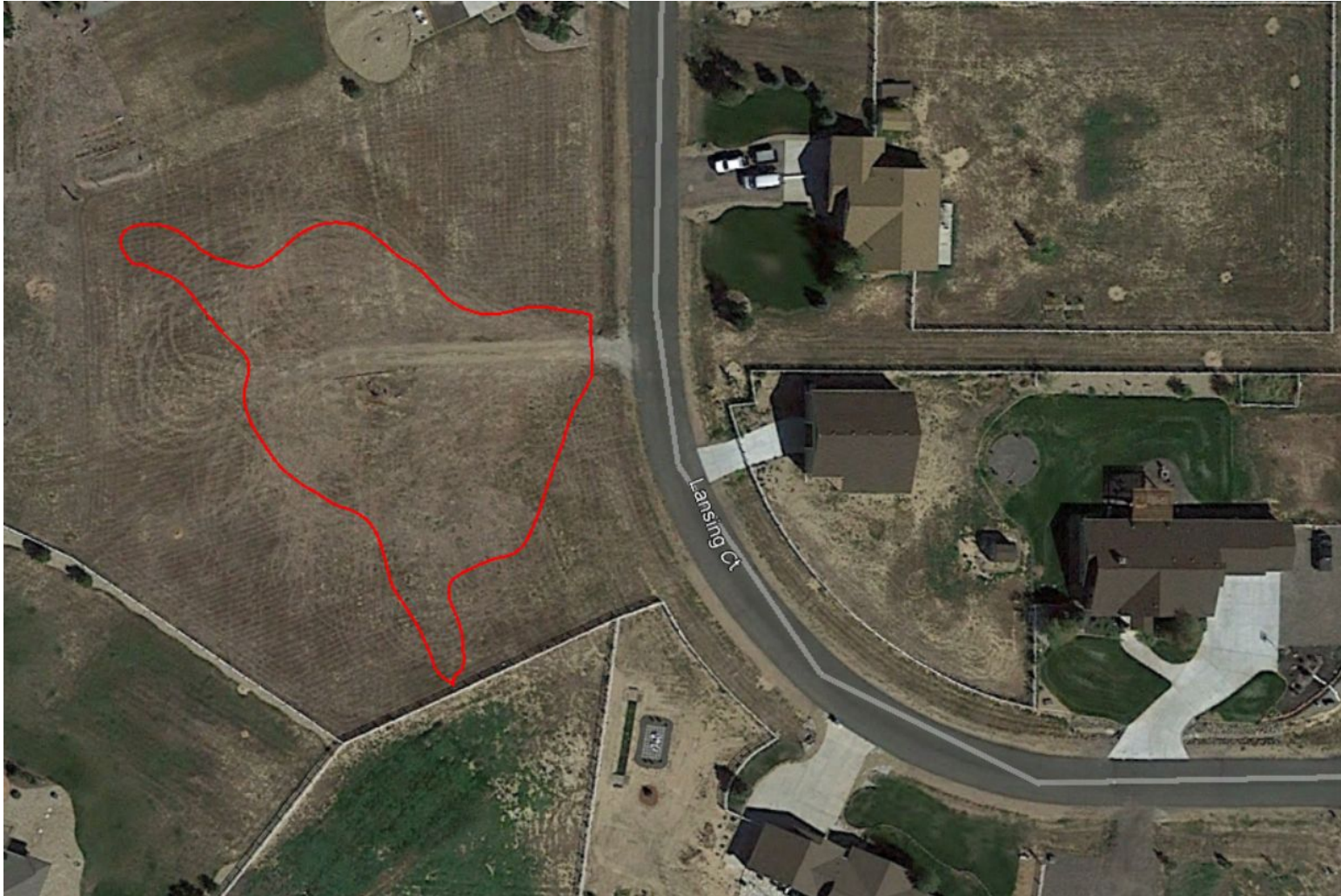


Photo 1. Google Earth aerial imagery taken 9/12/2019 illustrating the approximate damage due to vehicle rutting. The approximate area illustrated in red was mapped on 4/8/2020 using a Trimble Juno 3B handheld device.

Inspection Photos
Location Name: GUTHRIE #21-2
Location ID: 333075



Photo 2. Photo taken from the entrance of location, facing East. Photo illustrates the vehicle tracking device BMP is not in proper functioning condition. Sediment discharge from vehicle tracking was observed on Lansing Ct.

Inspection Photos
Location Name: GUTHRIE #21-2
Location ID: 333075



Photo 3. Photo taken from the entrance of location, facing South along Lansing Ct. Photo illustrates sediment discharge from vehicle tracking on Lansing Ct.

Inspection Photos
Location Name: GUTHRIE #21-2
Location ID: 333075



Photo 4. Photo taken from the entrance of location, facing North. Photo illustrates a damaged culvert from vehicle traffic.

Inspection Photos
Location Name: GUTHRIE #21-2
Location ID: 333075



Photo 5. Photo taken from the entrance of location, facing West. Photo illustrates rutting from vehicle traffic.

Inspection Photos
Location Name: GUTHRIE #21-2
Location ID: 333075



Photo 6. Photo taken from the southern vehicle rutting area, facing North.
See comments under Photo 5.

Inspection Photos
Location Name: GUTHRIE #21-2
Location ID: 333075



Photo 7. Photo taken from the western vehicle rutting area, facing North. See comments under Photo 5.

Inspection Photos
Location Name: GUTHRIE #21-2
Location ID: 333075



Photo 8. Photo taken from the western vehicle rutting area, facing East. See comments under Photo 5.

Inspection Photos
Location Name: GUTHRIE #21-2
Location ID: 333075



Photo 9. Photo taken from the wellhead, facing South. See comments under Photo 5.