

Site: Anderson Trust 32-8 API: 05-123-19089

Legal: 2N 68W Sec. 32: S2NE4

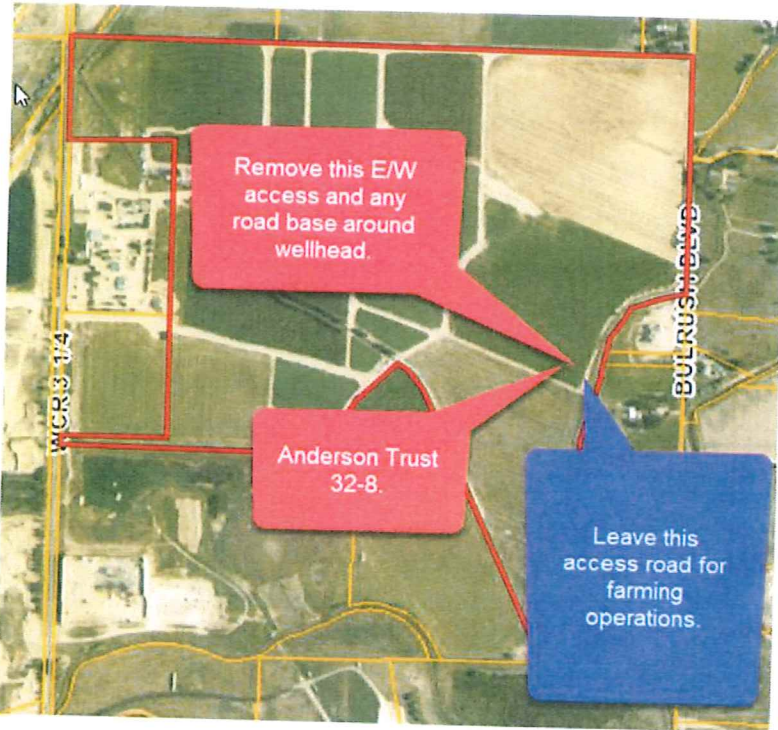
Surface Owner name: Anderson Southfarm LLC c/o Jim Anderson

Landman: Bob Bresnahan

Surface meeting notes:

Leave all main access roads, remove small access road directly to wellhead. Abandon flowline in place per COGCC rules and regulations. Reclamation plan detailed below.

1. Plug well & remove all Crestone owned equipment from the site. Clean locations of all debris.
2. Cut, clean, and abandon in place the flowline per COGCC rule 1105.e. To prevent unnecessary surface disturbance.
3. Remove road base from the pad and the E/W access road. Leave in place all main access roads for farming operations
4. Deep rip 18 inches to un-compact the sub soil.
5. Import quality top soil to place of disturbed area 4-6 inches. Disc the topsoil in place.



Map:

Agreed to this 16 day of Jan by Jim Anderson as Mngr for Anderson Southfarm LLC (Surface Owner) and Crestone Peak Resources.

Jim Anderson

Jim Anderson – Anderson Farmsouth LLC

Bob Bresnahan

Bob Bresnahan – Crestone Peak Resources

Please contact BOB.BRESNAHAN@CRESTONEPR.COM to suggest changes to this document.

