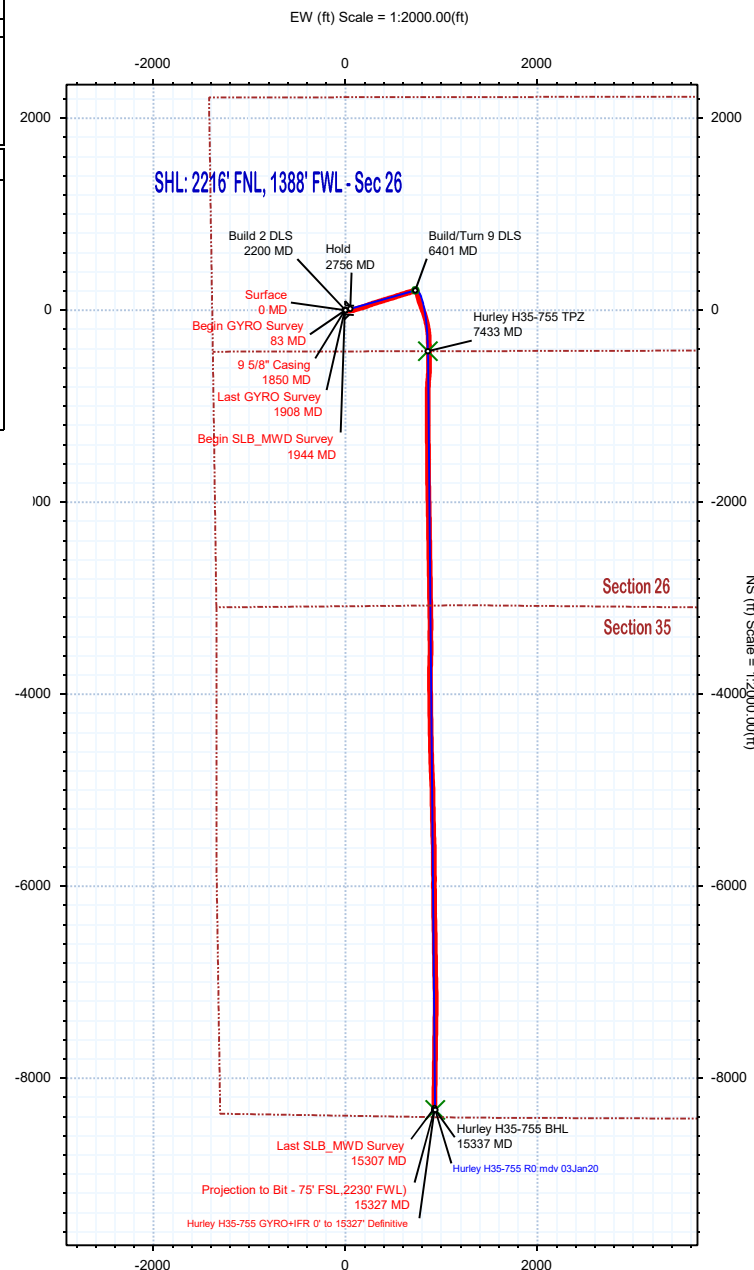
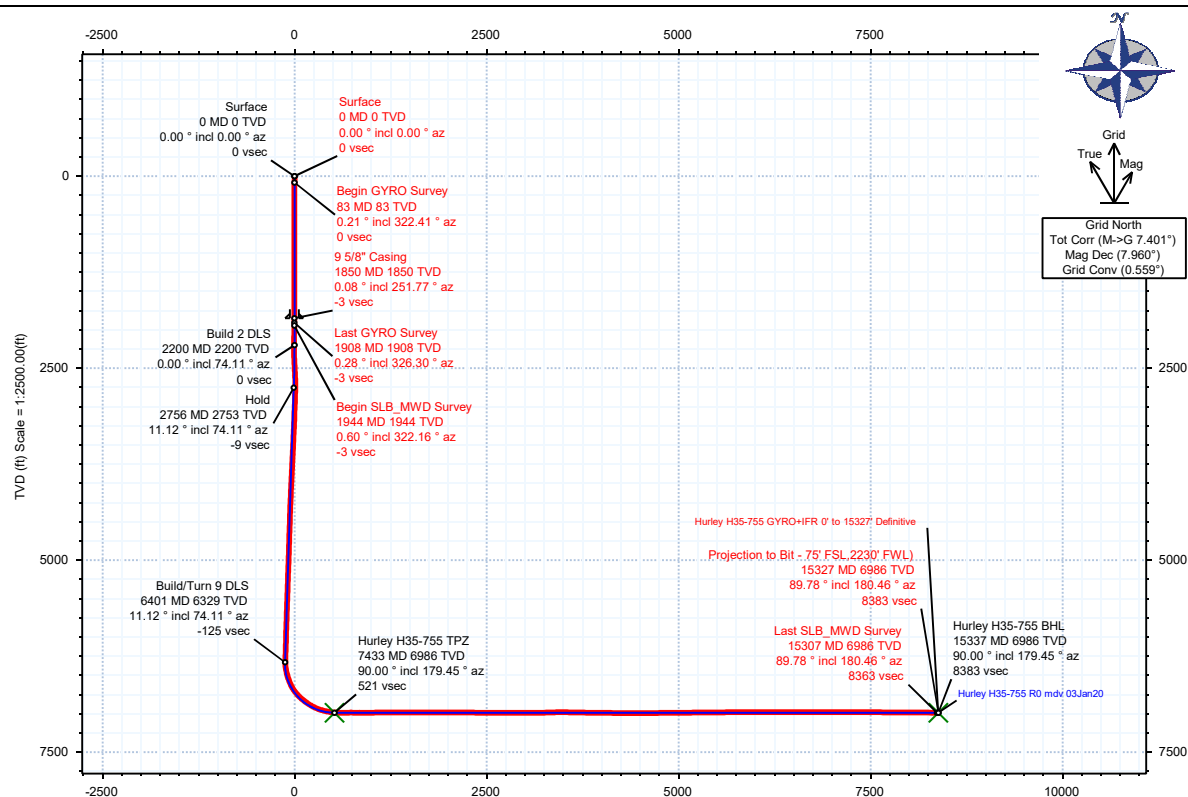


<b>Borehole:</b>	<b>Well:</b>	<b>Field:</b>	<b>Structure:</b>
Original Hole	Hurley H35-755	CO, Weld County (NAD 83 NZ) - 2019	Noble 26-03N-65W (Hurley H35 Pad)

<b>Gravity &amp; Magnetic Parameters</b>	<b>Surface Location</b>	<b>NAD83 Colorado State Plane, Northern Zone, US Feet</b>	<b>Miscellaneous</b>
Model: Magvar IFR Dip: 66.63° Date: 17-Jan-2020	Lat: N 40 11 51.04 Northing: 1315973.26ftUS Grid Conv: 0.5588°		Slot: Hurley H35-755 TVD Ref: KB 16.3ft(4838.3ft above MSL)
MagDec: 7.96° FS: 51953nT Gravity FS: 999.012mgn (9.80665 Based)	Lon: W 104 38 6.86 Easting: 3241560.15ftUS Scale Fact: 0.99995728		Plan: Hurley H35-755 GYRO+IFR 0' to 15327' Definitive

		Surface Location		Grid Coord		Local Coord	
Northing: 1315973.25512195		Easting: 3241560.145212		Latitude: N 40 11 51.04		Longitude: W 104 38 6.86	
VSec Azimuth: 173.59							
Target Description		Latitude	Longitude	Northing	Easting	TVD	VSec
Target Name							
Hurley H35 Pad Sec 26 - Half Sec	N 40 11 51.04	W 104 38 6.86	1315973.26	3241560.15	4838.30	0.00	0.00
Hurley H35 Pad Sec 26-35	N 40 11 51.04	W 104 38 6.86	1315973.26	3241560.15	4838.30	0.00	0.00
Hurley H35-755 - 35' R @ KOP	N 40 11 53.01	W 104 37 57.46	1316190.46	3242288.10	6328.92	-124.64	207.21
Hurley H35-755 TPZ	N 40 11 46.73	W 104 37 55.85	1315545.93	3242418.88	6986.30	520.55	-427.35
Hurley H35-755 BHL	N 40 10 28.62	W 104 37 55.86	1307642.51	3242495.37	6986.30	8383.45	-8331.12

Critical Points							
Critical Point	MD	INCL	AZIM	TVD	VSEC	N(+)S(-)	E(+)W(-)
Surface	0.00	0.00	0.00	0.00	0.00	0.00	0.00
Begin GYRO Survey	83.00	0.21	322.41	83.00	-0.13	0.12	-0.09
9 5/8" Casing	1850.00	0.08	251.77	1849.97	-2.87	2.22	-5.95
Last GYRO Survey	1908.00	0.28	326.30	1907.97	-2.99	2.33	-6.07
Begin SLB_MWD Survey	1944.00	0.60	322.16	1943.97	-3.23	2.55	-6.23
Last SLB_MWD Survey	15307.00	89.78	180.46	6985.74	8363.32	-8311.94	925.69
Projection to Bit - 75' FSL,2230' FWL)	15327.00	89.78	180.46	6985.82	8383.18	-8331.94	925.53



## Hurley H35-755 GYRO+IFR 0' to 15327' Definitive Survey Geodetic Report

(Def Survey)

**Report Date:** February 04, 2020 - 03:08 PM  
**Client:** Noble Energy  
**Field:** CO, Weld County (NAD 83 NZ) - 2019  
**Structure / Slot:** Noble 26-03N-65W (Hurley H35 Pad) / Hurley H35-755  
**Well:** Hurley H35-755  
**Borehole:** Original Hole  
**UWI / API#:** Unknown / 05-123-46816  
**Survey Name:** Hurley H35-755 GYRO+IFR 0' to 15327' Definitive  
**Survey Date:** January 13, 2020  
**Tort / AHD / DDI / ERD Ratio:** 256.418' / 9347.381 ft / 6.720 / 1.337  
**Coordinate Reference System:** NAD83 Colorado State Plane, Northern Zone, US Feet  
**Location Lat / Long:** N 40° 11' 51.03600", W 104° 38' 6.86400"  
**Location Grid N/E Y/X:** N 1315973.255 ftUS, E 3241560.145 ftUS  
**CRS Grid Convergence Angle:** 0.5588 °  
**Grid Scale Factor:** 0.99995728  
**Version / Patch:** 2.10.787.0

**Survey / DLS Computation:** Minimum Curvature / Lubinski  
**Vertical Section Azimuth:** 173.590 ° (Grid North)  
**Vertical Section Origin:** 0.000 ft, 0.000 ft  
**TVD Reference Datum:** KB 16.3ft  
**TVD Reference Elevation:** 4838.300 ft above MSL  
**Seabed / Ground Elevation:** 4822.000 ft above MSL  
**Magnetic Declination:** 7.960 °  
**Total Gravity Field Strength:** 999.0118mgn (9.80665 Based)  
**Gravity Model:** GARM  
**Total Magnetic Field Strength:** 51953.000 nT  
**Magnetic Dip Angle:** 66.630 °  
**Declination Date:** January 17, 2020  
**Magnetic Declination Model:** Magvar IFR  
**North Reference:** Grid North  
**Grid Convergence Used:** 0.5588 °  
**Total Corr Mag North->Grid North:** 7.4012 °  
**Local Coord Referenced To:** Well Head

Comments	MD (ft)	Incl (°)	Azim Grid (°)	TVD (ft)	TVDSS (ft)	VSEC (ft)	NS (ft)	EW (ft)	DLS (°/100ft)	Northing (ftUS)	Easting (ftUS)	Latitude (°)	Longitude (°)
Surface	0.00	0.00	0.00	0.00	-4838.30	0.00	0.00	0.00	N/A	1315973.26	3241560.15	40.197510	-104.635240
Begin GYRO Survey	83.00	0.21	322.41	83.00	-4755.30	-0.13	0.12	-0.09	0.25	1315973.38	3241560.05	40.197510	-104.635240
	176.00	0.33	263.56	176.00	-4662.30	-0.28	0.23	-0.46	0.31	1315973.48	3241559.68	40.197511	-104.635242
	268.00	0.85	336.25	267.99	-4570.31	-0.93	0.82	-1.00	0.89	1315974.08	3241559.14	40.197512	-104.635244
	355.00	0.24	330.23	354.99	-4483.31	-1.71	1.57	-1.35	0.70	1315974.82	3241558.79	40.197514	-104.635245
	443.00	0.37	303.16	442.99	-4395.31	-2.06	1.88	-1.68	0.22	1315975.14	3241558.46	40.197515	-104.635246
	530.00	0.32	315.37	529.99	-4308.31	-2.43	2.21	-2.09	0.10	1315975.47	3241558.06	40.197516	-104.635247
	618.00	0.26	23.63	617.99	-4220.31	-2.80	2.57	-2.18	0.37	1315975.82	3241557.97	40.197517	-104.635248
	706.00	0.19	303.99	705.99	-4132.31	-3.06	2.83	-2.22	0.33	1315976.09	3241557.93	40.197518	-104.635248
	793.00	0.20	173.92	792.99	-4045.31	-3.01	2.76	-2.32	0.41	1315976.02	3241557.82	40.197518	-104.635248
	881.00	0.33	289.61	880.99	-3957.31	-2.96	2.70	-2.55	0.52	1315975.95	3241557.60	40.197517	-104.635249
	968.00	0.23	314.62	967.98	-3870.32	-3.21	2.90	-2.91	0.18	1315976.16	3241557.24	40.197518	-104.635250
	1055.00	0.32	242.39	1054.98	-3783.32	-3.26	2.91	-3.25	0.38	1315976.17	3241556.90	40.197518	-104.635252
	1143.00	0.45	225.21	1142.98	-3695.32	-2.95	2.55	-3.71	0.20	1315975.81	3241556.44	40.197517	-104.635253
	1230.00	0.26	233.41	1229.98	-3608.32	-2.64	2.20	-4.11	0.23	1315975.45	3241556.04	40.197516	-104.635255
	1318.00	0.35	244.66	1317.98	-3520.32	-2.45	1.96	-4.51	0.12	1315975.22	3241555.63	40.197516	-104.635256
	1406.00	0.28	251.90	1405.98	-3432.32	-2.32	1.78	-4.96	0.09	1315975.04	3241555.18	40.197515	-104.635258
	1493.00	0.24	243.72	1492.98	-3345.32	-2.22	1.63	-5.33	0.06	1315974.89	3241554.82	40.197515	-104.635259
	1581.00	0.13	331.36	1580.98	-3257.32	-2.25	1.64	-5.54	0.30	1315974.90	3241554.61	40.197515	-104.635260
	1669.00	0.15	358.70	1668.98	-3169.32	-2.46	1.84	-5.59	0.08	1315975.10	3241554.56	40.197515	-104.635260
	1756.00	0.28	316.60	1755.98	-3082.32	-2.74	2.11	-5.74	0.23	1315975.37	3241554.41	40.197516	-104.635260
	1844.00	0.09	233.70	1843.97	-2994.33	-2.88	2.23	-5.94	0.32	1315975.48	3241554.20	40.197516	-104.635261
9 5/8" Casing Last GYRO Survey	1850.00	0.08	251.77	1849.97	-2988.33	-2.87	2.22	-5.95	0.47	1315975.48	3241554.20	40.197516	-104.635261
Begin SLB_MWD Survey	1908.00	0.28	326.30	1907.97	-2930.33	-2.99	2.33	-6.07	0.47	1315975.58	3241554.08	40.197517	-104.635262
	1944.00	0.60	322.16	1943.97	-2894.33	-3.23	2.55	-6.23	0.89	1315975.80	3241553.91	40.197517	-104.635262
	2032.00	1.02	289.50	2031.96	-2806.34	-3.96	3.17	-7.25	0.69	1315976.43	3241552.89	40.197519	-104.635266
	2119.00	1.61	287.45	2118.94	-2719.36	-4.80	3.80	-9.15	0.68	1315977.05	3241551.00	40.197521	-104.635273
	2206.00	1.04	288.17	2205.92	-2632.38	-5.62	4.41	-11.07	0.66	1315977.67	3241549.08	40.197522	-104.635279
	2292.00	1.93	101.40	2291.91	-2546.39	-5.50	4.37	-10.39	3.45	1315977.62	3241549.76	40.197522	-104.635277
	2380.00	4.81	106.86	2379.74	-2458.56	-3.59	3.01	-5.40	3.29	1315976.26	3241554.74	40.197518	-104.635259
	2468.00	7.25	106.83	2467.25	-2371.05	0.06	0.33	3.44	2.77	1315973.58	3241563.59	40.197511	-104.635228
	2555.00	10.51	103.64	2553.20	-2285.10	4.95	-3.13	16.41	3.79	1315970.12	3241576.56	40.197501	-104.635181
	2643.00	10.43	89.35	2639.75	-2198.55	8.50	-4.94	32.18	2.94	1315968.32	3241592.32	40.197496	-104.635125
	2730.00	12.41	85.72	2725.02	-2113.28	9.64	-4.15	49.38	2.42	1315969.11	3241609.52	40.197497	-104.635063
	2817.00	12.75	76.67	2809.94	-2028.36	8.83	-1.24	68.04	2.30	1315972.02	3241628.19	40.197505	-104.634996
	2905.00	13.05	75.77	2895.72	-1942.58	6.31	3.44	87.12	0.41	1315976.70	3241647.27	40.197517	-104.634928
	2992.00	12.28	71.76	2980.60	-1857.70	3.07	8.75	105.43	1.34	1315982.01	3241665.57	40.197531	-104.634862
	3080.00	11.71	75.15	3066.68	-1771.62	-0.16	13.97	122.95	1.03	1315987.23	3241683.09	40.197545	-104.634799
	3167.00	11.57	73.17	3151.89	-1686.41	-3.03	18.76	139.84	0.49	1315992.01	3241699.98	40.197558	-104.634739
	3255.00	12.26	75.56	3238.00	-1600.30	-5.93	23.65	157.33	0.96	1315996.90	3241717.47	40.197571	-104.634676
	3342.00	12.75	69.20	3322.94	-1515.36	-9.61	29.36	175.25	1.68	1316002.61	3241735.39	40.197586	-104.634612
	3429.00	12.44	71.61	3407.85	-1430.45	-13.94	35.72	193.12	0.70	1316008.98	3241753.26	40.197603	-104.634547
	3516.00	12.33	71.73	3492.82	-1345.48	-17.79	41.59	210.83	0.13	1316014.85	3241770.97	40.197619	-104.634484
	3604.00	12.12	70.09	3578.83	-1259.47	-21.88	47.68	228.44	0.46	1316020.94	3241788.58	40.197635	-104.634421
	3691.00	12.44	70.00	3663.83	-1174.47	-26.22	54.00	245.84	0.37	1316027.25	3241805.97	40.197652	-104.634358
	3778.00	12.34	70.76	3748.81	-1089.49	-30.48	60.27	263.42	0.22	1316033.52	3241823.55	40.197668	-104.634295
	3866.00	12.67	71.29	3834.72	-1003.58	-34.63	66.46	281.44	0.40	1316039.71	3241841.57	40.197685	-104.634230
	3953.00	12.24	72.32	3919.67	-918.63	-38.46	72.32	299.26	0.56	1316045.58	3241859.39	40.197701	-104.634166
	4041.00	12.65	71.72	4005.61	-832.69	-42.27	78.18	317.30	0.49	1316051.43	3241877.43	40.197716	-104.634101
	4128.00	12.89	73.06	4090.45	-747.85	-46.00	83.99	335.63	0.44	1316057.25	3241895.76	40.197732	-104.634036
	4216.00	12.71	71.98	4176.27	-662.03	-49.74	89.85	354.22	0.34	1316063.10	3241914.35	40.197747	-104.633969
	4303.00	11.50	70.97	4261.33	-576.97	-53.56	95.64	371.52	1.41	1316068.89	3241931.65	40.197763	-104.633907
	4391.00	10.83	73.31	4347.67	-490.63	-56.95	100.87	387.73	0.92	1316074.12	3241947.86	40.197776	-104.633849
	4478.00	10.00	73.52	4433.23	-405.07	-59.73	105.36	402.81	0.96	1316078.61	3241962.93	40.197788	-104.633794
	4566.00	9.63	72.78	4519.94	-318.36	-62.45	109.71	417.16	0.44	1316082.96	3241977.29	40.197800	-104.633743
	4653.00	9.83	73.65	4605.69	-232.61	-65.10	113.95	431.24	0.29	1316087.20	3241991.37	40.197811	-104.633692
	4741.00	10.60	73.98	4692.30	-146.00	-67.74	118.30	446.23	0.88	1316091.55	3242006.35	40.197823	-104.633639
	4828.00	10.26	73.61	4777.86	-60.44	-70.42	122.70	461.35	0.40	1316095.95	3242021.48	40.197834	-104.633584
	4916.00	9.51	73.32	4864.55	26.25	-73.08	126.99	475.84	0.85	1316100.24	3242035.96	40.197846	-104.633532
	5003.00	10.04	74.21	4950.29	111.99	-75.59	131.12	490.02	0.63	1316104.37	3242050.14	40.197857	-104.633481
	5090.00	9.76	71.65	5035.99	197.69	-78.36	135.51	504.32	0.60	1316108.76	3242064.44	40.197868	-104.633430
	5178.00	10.06	72.12	5122.68	284.38	-81.43	140.21	518.71	0.35	1316113.46	3242078.83	40.197881	-104.633378
	5265.00	9.72	71.59	5208.39	370.09	-84.47	144.87	532.91	0.40	1316118.12	3242093.03	40.197893	-104.633327
	5353.00	9.27	70.98	5295.18	456.88	-87.56	149.52	546.66	0.52	1316122.77	3242106.78	40.197906	-104.633278
	5440.00	9.94	73.25	5380.96	542.66	-90.44	153.97	560.47	0.88	1316127.22	3242120.59	40.197918	-104.633228
	5528.00	9.60	71.54	5467.68	629.38	-93.33	158.48	574.71	0.51	1316131.73	3242134.83	40.197930	-104.633177
	5615.00	9.83	74.15	5553.44	715.14	-96.06	162.81	588.73	0.57	1316136.06	3242148.85	40.197941	-104.633127
	5702.00	10.20	72.66	5639.11	800.81	-98.74	167.13	603.23	0.52	1316140.38	3242163.35	40.197953	-104.633075
	5790.00	10.37	71.73	5725.70	887.40	-101.85	171.94	618.19	0.27	1316145.19	3242178.31	40.197965	-104.6330

Comments	MD (ft)	Incl (°)	Azim Grid (°)	TVD (ft)	TVDSS (ft)	VSEC (ft)	NS (ft)	EW (ft)	DLS (°/100ft)	Northing (ftUS)	Easting (ftUS)	Latitude (°)	Longitude (°)
	6490.00	13.38	130.38	6414.56	1576.26	-113.20	196.67	736.60	12.33	1316169.91	3242296.71	40.198030	-104.632596
	6577.00	15.85	162.47	6498.88	1660.58	-94.18	178.79	747.87	9.59	1316152.03	3242307.98	40.197981	-104.632557
	6665.00	21.40	167.17	6582.24	1743.94	-66.41	151.65	755.06	6.53	1316124.90	3242315.17	40.197906	-104.632532
	6752.00	30.59	164.03	6660.36	1822.06	-28.72	114.81	764.69	10.68	1316088.06	3242324.80	40.197805	-104.632499
	6840.00	40.40	158.76	6731.93	1893.63	21.06	66.58	781.23	11.67	1316039.83	3242341.34	40.197672	-104.632441
	6927.00	48.55	159.84	6793.96	1955.66	80.08	9.59	802.72	9.41	1315982.85	3242362.83	40.197515	-104.632366
	7015.00	54.41	162.46	6848.75	2010.45	147.29	-55.55	824.89	7.05	1315917.71	3242385.00	40.197335	-104.632289
	7102.00	60.17	166.34	6895.76	2057.46	219.52	-126.02	844.48	7.61	1315847.24	3242404.59	40.197141	-104.632222
	7190.00	68.53	171.88	6933.84	2095.54	298.50	-203.84	859.32	11.06	1315769.43	3242419.42	40.196927	-104.632171
	7277.00	75.46	177.58	6960.74	2122.44	381.13	-286.14	866.83	10.11	1315687.12	3242426.93	40.196701	-104.632147
	7365.00	82.31	179.42	6977.69	2139.39	467.11	-372.41	869.07	8.05	1315600.86	3242429.18	40.196464	-104.632142
	7452.00	87.88	180.16	6985.13	2146.83	553.25	-459.06	869.38	6.46	1315514.22	3242429.49	40.196227	-104.632144
	7539.00	90.84	178.51	6986.10	2147.80	639.79	-546.03	870.39	3.90	1315427.25	3242430.50	40.195988	-104.632144
	7627.00	90.14	182.10	6985.35	2147.05	727.17	-634.01	869.93	4.16	1315339.27	3242430.03	40.195746	-104.632148
	7714.00	89.09	186.32	6985.93	2147.63	812.66	-720.75	863.54	5.00	1315252.53	3242423.65	40.195508	-104.632174
	7802.00	90.47	180.12	6986.27	2147.97	899.37	-808.57	858.60	7.22	1315164.72	3242418.71	40.195268	-104.632195
	7889.00	90.36	180.65	6985.64	2147.34	985.76	-895.57	858.02	0.62	1315077.73	3242418.12	40.195029	-104.632200
	7977.00	90.28	179.15	6985.15	2146.85	1073.22	-983.56	858.17	1.71	1314989.74	3242418.28	40.194787	-104.632203
	8064.00	90.46	180.24	6984.59	2146.29	1159.72	-1070.56	858.63	1.27	1314902.75	3242418.74	40.194548	-104.632204
	8152.00	89.69	181.47	6984.47	2146.17	1247.02	-1158.54	857.32	1.65	1314814.76	3242417.43	40.194307	-104.632212
	8239.00	90.26	178.65	6984.51	2146.21	1333.45	-1245.54	857.23	3.31	1314727.78	3242417.34	40.194068	-104.632215
	8327.00	90.18	180.10	6984.17	2145.87	1421.00	-1333.53	858.19	1.65	1314639.79	3242418.30	40.193827	-104.632215
	8415.00	90.26	178.50	6983.83	2145.53	1508.56	-1421.52	859.26	1.82	1314551.80	3242419.37	40.193585	-104.632214
	8502.00	90.13	180.85	6983.54	2145.24	1595.06	-1508.51	859.76	2.71	1314464.81	3242419.86	40.193346	-104.632215
	8589.00	89.90	179.15	6983.51	2145.21	1681.52	-1595.51	859.76	1.97	1314377.82	3242419.86	40.193107	-104.632218
	8677.00	89.77	179.21	6983.77	2145.47	1769.10	-1683.50	861.02	0.16	1314289.83	3242421.12	40.192866	-104.632217
	8764.00	89.44	180.02	6984.37	2146.07	1855.61	-1770.49	861.60	1.01	1314202.84	3242421.71	40.192627	-104.632218
	8852.00	89.92	178.17	6984.86	2146.56	1943.20	-1858.48	862.99	2.17	1314114.86	3242423.10	40.192386	-104.632216
	8940.00	89.93	179.30	6984.97	2146.67	2030.85	-1946.45	864.93	1.28	1314026.89	3242425.04	40.192144	-104.632212
	9027.00	90.02	178.21	6985.01	2146.71	2117.49	-2033.43	866.82	1.26	1313939.92	3242426.93	40.191905	-104.632208
	9115.00	89.78	179.83	6985.17	2146.87	2205.09	-2121.41	868.33	1.86	1313851.94	3242428.44	40.191664	-104.632206
	9202.00	90.00	178.25	6985.33	2147.03	2291.70	-2208.40	869.79	1.83	1313764.95	3242429.89	40.191425	-104.632204
	9290.00	89.81	180.35	6985.48	2147.18	2379.26	-2296.39	870.86	2.40	1313676.97	3242430.97	40.191183	-104.632203
	9377.00	89.63	178.10	6985.90	2147.60	2465.83	-2383.37	872.04	2.59	1313589.99	3242432.14	40.190945	-104.632202
	9464.00	89.69	179.87	6986.42	2148.12	2552.44	-2470.35	873.58	2.04	1313503.01	3242433.69	40.190706	-104.632200
	9552.00	89.29	178.98	6987.20	2148.90	2639.98	-2558.35	874.46	1.11	1313415.02	3242434.57	40.190464	-104.632199
	9639.00	89.84	179.27	6987.86	2149.56	2726.57	-2645.33	875.79	0.71	1313328.04	3242435.90	40.190225	-104.632198
	9727.00	89.70	178.11	6988.22	2149.92	2814.22	-2733.31	877.80	1.33	1313240.07	3242437.91	40.189984	-104.632194
	9815.00	90.00	179.32	6988.45	2150.15	2901.87	-2821.28	879.78	1.42	1313152.10	3242439.88	40.189742	-104.632190
	9902.00	89.95	179.88	6988.49	2150.19	2988.39	-2908.28	880.38	0.65	1313065.10	3242440.49	40.189504	-104.632191
	9990.00	90.23	178.91	6988.35	2150.05	3075.93	-2996.27	881.31	1.15	1312977.11	3242441.42	40.189262	-104.632190
	10077.00	90.38	178.92	6987.88	2149.58	3162.56	-3083.26	882.96	0.17	1312890.14	3242443.07	40.189023	-104.632187
	10164.00	91.75	179.09	6986.27	2147.97	3249.15	-3170.23	884.47	1.59	1312803.17	3242444.58	40.188784	-104.632185
	10252.00	92.50	178.98	6983.00	2144.70	3336.69	-3258.15	885.95	0.86	1312715.25	3242446.06	40.188543	-104.632183
	10339.00	90.51	182.23	6980.72	2142.42	3423.00	-3345.10	885.03	4.38	1312628.30	3242445.14	40.188304	-104.632189
	10426.00	89.47	178.08	6980.73	2142.43	3509.41	-3432.08	884.80	4.92	1312541.33	3242444.90	40.188066	-104.632187
	10514.00	89.34	179.84	6981.65	2143.35	3597.01	-3520.06	886.39	2.01	1312453.35	3242446.50	40.187824	-104.632190
	10601.00	88.53	181.89	6983.26	2144.96	3683.29	-3607.03	885.08	2.53	1312366.39	3242445.19	40.187585	-104.632198
	10689.00	89.17	181.43	6985.03	2146.73	3770.40	-3694.97	882.53	0.90	1312278.45	3242442.64	40.187344	-104.632210
	10776.00	89.53	181.03	6986.02	2147.72	3856.62	-3781.95	880.67	0.62	1312191.48	3242440.77	40.187105	-104.632220
	10864.00	89.08	179.26	6987.09	2148.79	3944.04	-3869.94	880.44	2.08	1312103.49	3242440.55	40.186864	-104.632224
	10951.00	89.33	178.98	6988.29	2149.99	4030.63	-3956.92	881.78	0.43	1312016.51	3242441.88	40.186625	-104.632222
	11039.00	89.21	178.95	6989.41	2151.11	4118.23	-4044.90	883.37	0.14	1311928.54	3242443.47	40.186384	-104.632220
	11126.00	89.05	179.51	6990.73	2152.43	4204.80	-4131.88	884.54	0.67	1311841.56	3242444.64	40.186145	-104.632219
	11214.00	89.58	179.50	6991.79	2153.49	4292.32	-4219.87	885.30	0.60	1311753.58	3242445.40	40.185903	-104.632219
	11301.00	89.43	179.21	6992.54	2154.24	4378.88	-4306.86	886.28	0.38	1311666.59	3242446.38	40.185664	-104.632218
	11389.00	90.67	178.61	6992.46	2154.16	4466.50	-4394.84	887.95	1.57	1311578.61	3242448.06	40.185423	-104.632216
	11476.00	90.48	179.27	6991.59	2153.29	4553.12	-4481.82	889.56	0.79	1311491.63	3242449.67	40.185184	-104.632213
	11564.00	90.59	178.48	6990.77	2152.47	4640.74	-4569.80	891.29	0.91	1311403.66	3242451.39	40.184943	-104.632210
	11651.00	90.90	178.81	6989.64	2151.34	4727.39	-4656.77	893.34	0.52	1311316.69	3242453.45	40.184704	-104.632205
	11739.00	90.54	178.29	6988.53	2150.23	4815.05	-4744.73	895.57	0.72	1311228.73	3242455.68	40.184462	-104.632201
	11826.00	90.68	177.17	6987.60	2149.30	4901.82	-4831.66	899.02	1.30	1311141.81	3242459.12	40.184224	-104.632191
	11914.00	90.52	177.13	6986.68	2148.38	4989.65	-4919.54	903.39	0.19	1311053.93	3242463.50	40.183982	-104.632179
	12002.00	90.37	177.67	6986.00	2147.70	5077.45	-5007.45	907.38	0.64	1310966.03	3242467.49	40.183741	-104.632167
	12089.00	90.44	181.03	6985.38	2147.08	5164.00	-5094.43	908.37	3.86	1310879.05	3242468.48	40.183502	-104.632167
	12177.00	90.27	177.97	6984.84	2146.54	5251.52	-5182.42	909.14	3.48	1310791.07	3242469.24	40.183261	-104.632167
	12264.00	90.52	179.32	6984.24	2145.94	5338.17	-5269.39	911.20	1.58	1310704.10	3242471.30	40.183022	-104.632163
	12351.00	90.49	179.01	6983.47	2145.17	5424.76	-5356.37	912.46	0.36	1310617.12	3242472.57	40.182783	-104.632161
	12439.00	90.42	178.46	6982.77	2144.47	5512.40	-5444.35	914.41	0.63	1310529.15	3242474.51	40.182541	-104.632158
	12526.00	91.23	177.71	6981.52	2143.22	5599.12	-5531.29	917.31	1.27	1310442.21	3242477.42	40.182303	-104.632150
	12614.00	89.96	178.79	6980.61	2142.31	5686.82	-5619.24	920.00	1.89	1310354.26	3242480.10	40.182061	-104.632144
	12701.00	90.38	179.51	6980.35	2142.05	5773.41	-5706.23	921.29	0.96	1310267.28	3242481.39	40.181822	-104.632142
	12788.00	90.02	180.00	69									

Comments	MD (ft)	Incl (°)	Azim Grid (°)	TVD (ft)	TVDSS (ft)	VSEC (ft)	NS (ft)	EW (ft)	DLS (°/100ft)	Northing (ftUS)	Easting (ftUS)	Latitude (°)	Longitude (°)
Survey Type:	Def Survey												

Survey Error Model: ISCWSA Rev 0 \*\*\* 3-D 95.000% Confidence 2.7955 sigma  
Survey Program:

Description	Part	MD From (ft)	MD To (ft)	EOU Freq (ft)	Hole Size (in)	Casing Diameter (in)	Survey Tool Type	Borehole / Survey
	1	0.000	16.300	1/98.425	13.500	9.625	NAL_NSG+MSHOT-Depth Only	Original Hole / Hurley H35-755 GYRO+IFR 0' to 15327' Definitive
	1	16.300	1850.000	Act Stns	13.500	9.625	NAL_NSG+MSHOT	Original Hole / Hurley H35-755 GYRO+IFR 0' to 15327' Definitive
	1	1850.000	15327.000	Act Stns	8.500	5.500	NAL_MWD_IFR1+MS	Original Hole / Hurley H35-755 GYRO+IFR 0' to 15327' Definitive