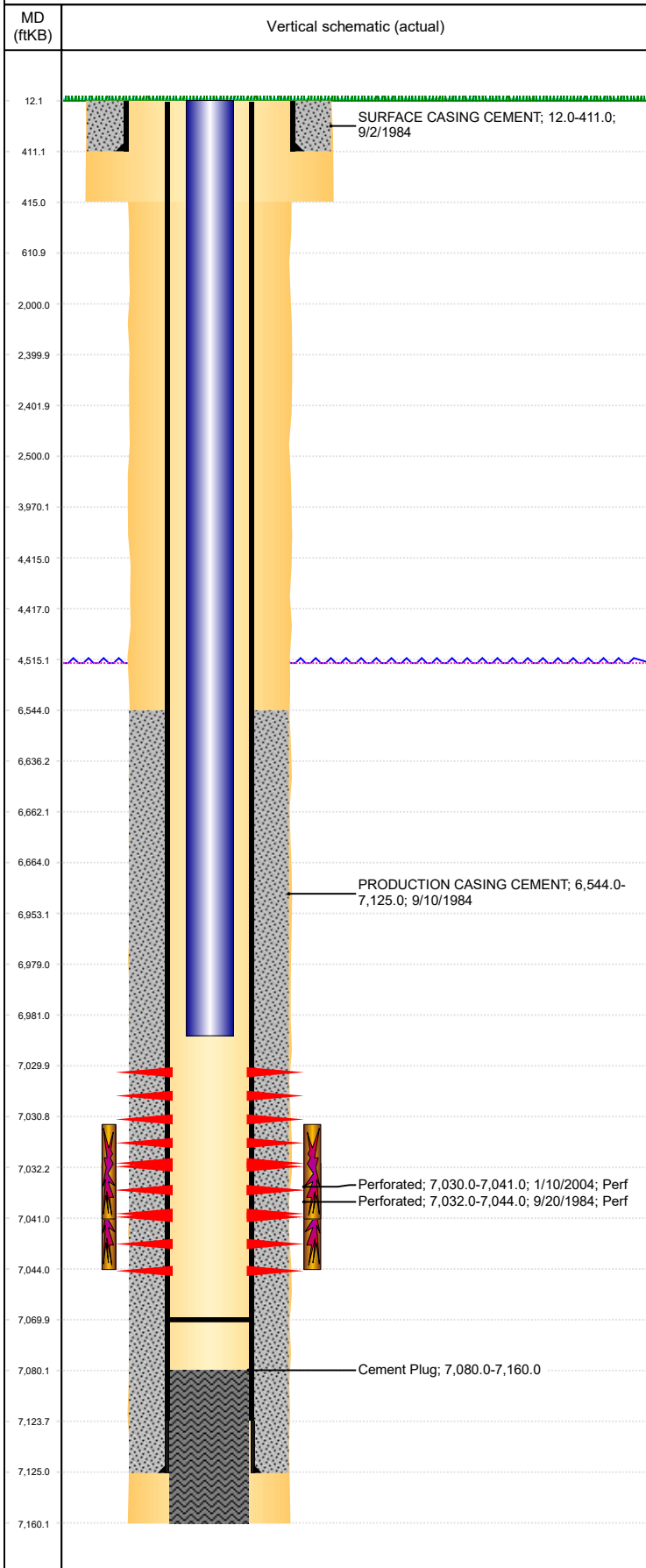


**Well Name: LATHAM 03-01**

VERTICAL, ORIGINAL HOLE, 4/6/2020 11:34:32 AM



Well Header									
API 05-123-11953		Business Unit DJ BASIN		District 15		Well Config VERTICAL			
KB - GL / MSL (ft... 12.00		Spud Date 9/2/1984		P & A Date		Well Production Status PR			SoRT No
Comment DATA SKETCHY- ? ?CEMENT PLUG 7080-7160' ??									
STATE SHOWS SHUT IN SINCE OCT 2016, NOTHING IN FILE AFTER 2011.									
Surface Location (Congressional)									
Qtr 3 NE	Qtr 4 SW	Section 3	Twonshp 4	Twنش... N	Range 65	Rng E/... W	Actual Latitude (°) 40.33820600		Actual Longitude (°) -104.65152800
Wellbore Sections									
Section Des			Size (in)			Act Top, MD (ftKB)		Act Btm, MD (ftKB)	
SURFACE			12 1/4			12		415	
PRODUCTION			7 7/8			415		7,160	
Casing Strings									
Csg Des			Run Date		OD (in)	Wt/Len (lb/ft)	Grade	Top, MD (ftKB)	MD (ftKB)
Surface			9/2/1984		8 5/8	24.00	J-55	12.0	411.0
Production			9/10/1984		4 1/2	11.60	J-55	12.0	7,125.0
Cement									
Des					Start Date		Top (ftKB)		Btm (ftKB)
Cement Plug							7,080.0		7,160.0
SURFACE CASING CEMENT					9/2/1984		12.0		411.0
PRODUCTION CASING CEMENT					9/10/1984		6,544.0		7,125.0
Zone Statuses									
Zone Name		Status Date	Status	Fluid Type	Job			Prod Method	
CODELL		9/28/1984	PR		DRILLING/COMPLETION - ORIGINAL, 9/2/1984...				
CODELL		1/16/2004	PR		RE-FRAC, 1/8/2004 00:00				
Perforation Data									
Linked Zone			Bnch/Stg	Entered Shot Total	Top (ftKB)		Btm (ftKB)		Date
CODELL, ORIGINAL HOLE				40	7,030.00		7,041.00		1/10/2004
CODELL, ORIGINAL HOLE				24	7,032.00		7,044.00		9/20/1984
Stimulation Intervals									
Zone				Start Date		Top (ftKB)		Btm (ftKB)	
CODELL, ORIGINAL HOLE				1/13/2004		7,031.0		7,041.0	
CODELL, ORIGINAL HOLE				9/21/1984		7,032.0		7,044.0	
Other In Hole									
Run Date		Des			Make		OD (in)	Top (ftKB)	Btm (ftKB)
3/8/2016		Plunger Lift					1 7/8		
Logs									
Date		Type				Top, MD (ftKB)		Btm, MD (ftKB)	
9/9/1984		COMPENSATED NEUTRON				3,500.0		7,130.0	
9/9/1984		INDUCTION				415.0		7,150.0	
9/17/1984		CEMENT BOND				6,450.0		7,039.0	
Plug Back Total Depths									
Date		Type			Com				Depth (ftKB)
9/17/1984		FILL			LOGGER DEPTH ON CBL				7,036.0
1/10/2004		GUIDE SHOE							7,070.0