

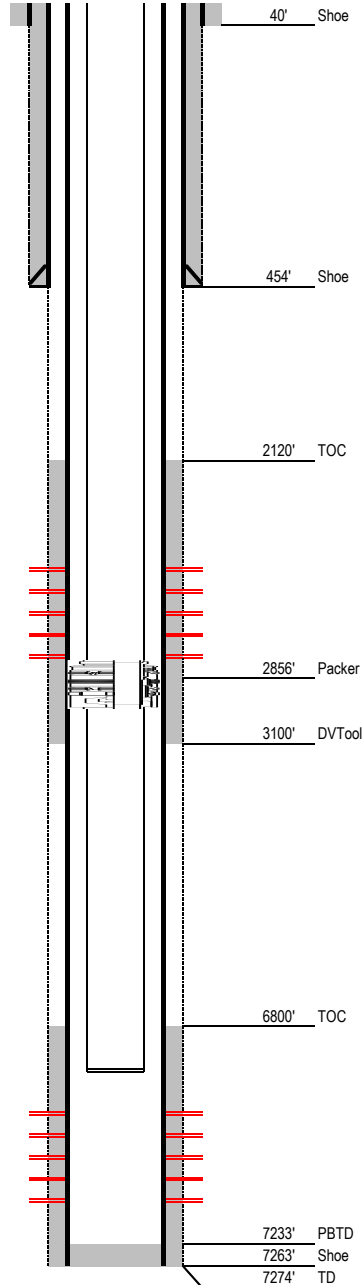
Laramie Energy

Current Wellbore Diagram

Not to Scale

FEDERAL WELL: YES ☐ NO ☒

| Geological Tops | Depth (MD) |
|-----------------|------------|
| Cameo | 1965' |
| Rollins | 2280' |
| Cozzette | 2498' |
| Corcoran | 2703' |
| Sego | 2864' |
| Mancos | 2996' |
| Mancos B | 5406' |
| Frontier | 6797' |
| Dakota | 6956' |
| Cedar Mountain | 7127' |
| Morrison | 7174' |



Well Name Horseshoe Canyon 2-29
API 05-077-08657-00
Surface Location NENE S29, T9S, R97W
GPS Coordinates 39.240575 -108.236917
Bottom Hole Loc 1236 FSL & 1240 FEL SEC 29 T9S R97W
Field Shire Gulch # 77450
County, State Mesa, CO # 077
Spud Date
Completion Date 2/26/1993
Diagram Date 3/3/2020
KB Elevation 5531'
KB 13'
GL Elevation 5518'

Hole -
Conductor 16" .25" wall @ 40'
Cement Surface

Surface Hole 12.25" @ 454'
Casing 8.625" 24# K55 STC @ 450'
TOC Surface

Production Hole 7.875" @ 7274'
Casing 5.5" 15.5 & 17.0 ppf K55 LTC @ 7263'
Cement tops 1st stage 6800' 2nd stage 2120'
RMWS CBL dated 1/20/1993

Tubing 2 3/8" 4.7 ppf J55 EUE @ 7005'

| Perforations | Top | Bottom |
|--------------|-------|--------|
| | 2506' | 2596' |
| | 2710' | 2782' |
| | 7018' | 7172' |