

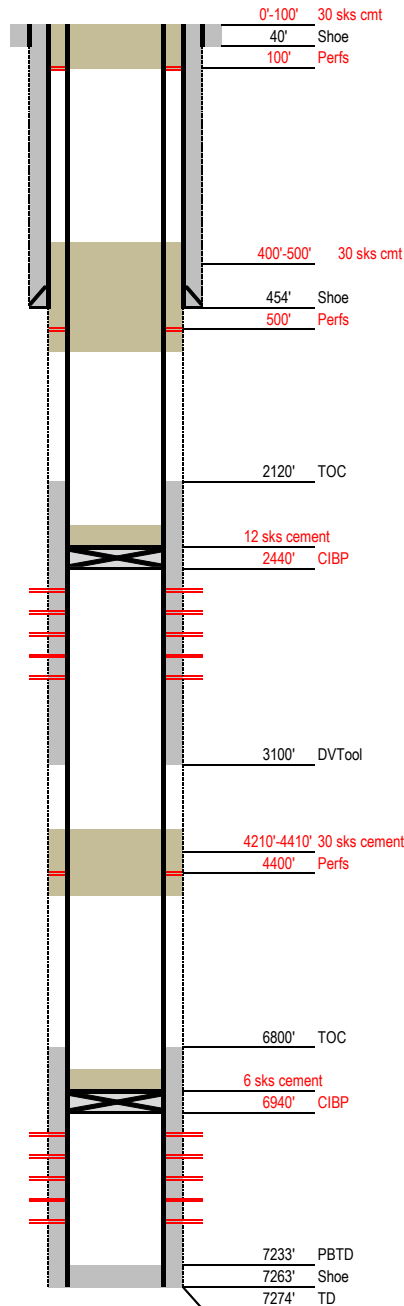
Laramie Energy

Proposed P&A Wellbore Diagram

Not to Scale

FEDERAL WELL: YES ☐ NO ☒

Geological Tops	Depth (MD)
Cameo	1965'
Rollins	2280'
Cozzette	2498'
Corcoran	2703'
Sego	2864'
Mancos	2996'
Mancos B	5406'
Frontier	6797'
Dakota	6956'
Cedar Mountain	7127'
Morrison	7174'



Well Name Horseshoe Canyon 2-29
API 05-077-08657-00
Surface Location NENE S29, T9S, R97W
GPS Coordinates 39.240575 -108.236917
Bottom Hole Loc 1236 FSL & 1240 FEL SEC 29 T9S R97W
Field Shire Gulch # 77450
County, State Mesa, CO # 077
Spud Date
Completion Date 2/26/1993
Diagram Date 3/3/2020
KB Elevation 5531'
KB 13'
GL Elevation 5518'

Hole -
Conductor 16" .25" wall @ 40'
Cement Surface

Surface Hole 12.25" @ 454'
Casing 8.625" 24# K55 STC @ 450'
TOC Surface

Production Hole 7.875" @ 7274'
Casing 5.5" 15.5# K55 LTC @ 7263'
Cement tops 1st stage 6800' 2nd stage 2120'
RMWS CBL dated 1/20/1993

Tubing 2 3/8" 4.7 ppf J55 EUE @ 7005'

Perforations	Top	Bottom
	2506'	2596'
	2710'	2782'
	7018'	7172'