

Rangely Weber Sand Unit

LARSON FV B16X Current Wellbore

02/25/20

Well Details:	F.V. LARSON B 16X
STATE & CO	CO - Rio Blanco
State Location	SESE Section 26, T2N, R102W, 6TH P.M.
NAD83 location:	LAT: 40.11038997 & LONG: 108.8056231
API #	05-103-07024
CHEVNO	DE9863

Casing Details:	
Type	Depth
KB	5365
GL	5355
10.75 in. 40.5 #/ft, J-55	14 - 968,' 650 sxs cmt
7 in. 23 #/ft, J-55	14 - 5336,' sxs cmt
7 in. 23 #/ft, N-80	5336 - 6458,' 810 sxs cmt
4 in. 4 #/ft, 4	4 - 4,' 4 sxs cmt
5 in. 5 #/ft, 5	5 - 5,' 5 sxs cmt
Perfs, Top	6019
Perfs, Btm	6378
PBTD	6445
TD	6458

Formation	Depth
Niobrara	
Frontier	0
Frontier Snd	
Mowry	
Dakota	0
Morrison	0
Curtis	0
Entrada	0
Carmel	0
Navajo	0
Chinle	0
Shinarump	0
Moenkopi	0
Weber	5981

GOC_CALC	5695	FT	
Weber 1a	5981	167	5981
Weber 2	6148		
Weber 3a	6154	81	6154
Weber 4	6235		
Weber 5a	6271	106	6271
Weber 6	6377		
Weber 7a	6401	-6401	6401
Weber 8	0		
Weber 9a	0	0	0
Weber 10	0		
Weber 11a	0	0	0
OVC_CALC	6465	-6047	####

KB 5365
GL 5355
10.75 in. 40.5 #/ft, J-55
14 - 968,' 650 sxs cmt

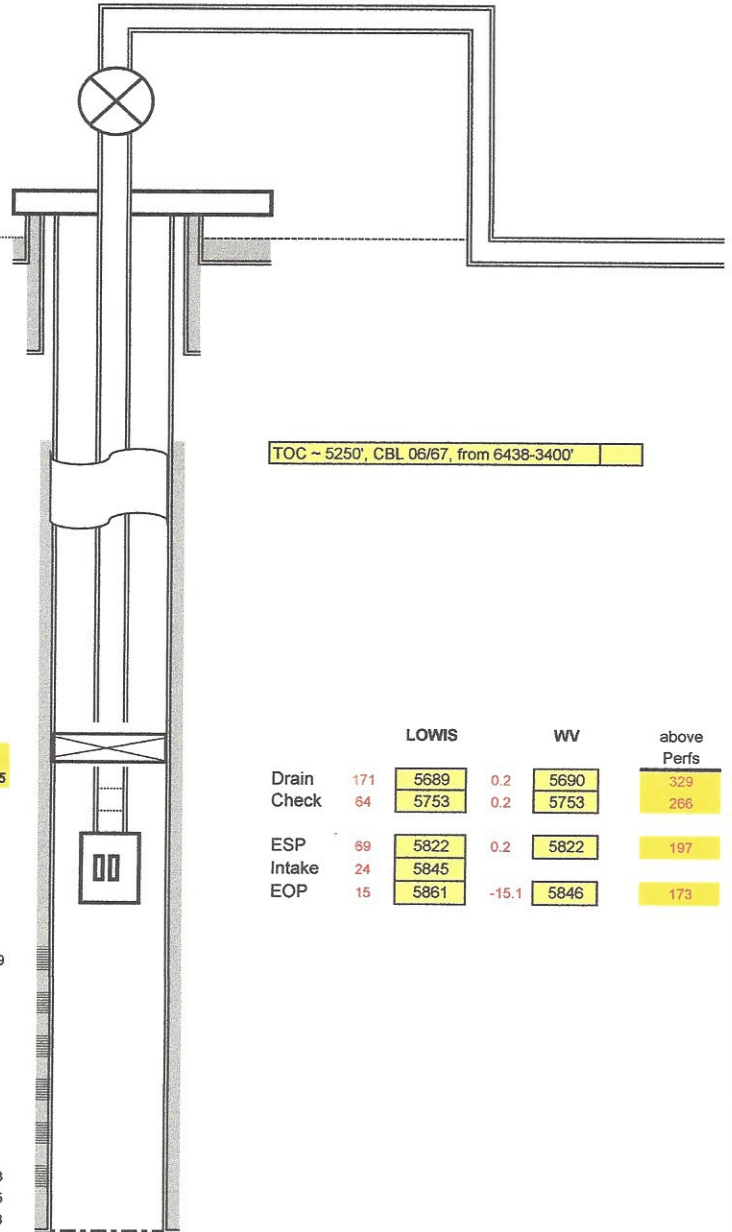
7 in. 23 #/ft, J-55
14 - 5336,' sxs cmt

CIBP @ 5685
Cut Tbg @ 5685

7 in. 23 #/ft, N-80
5336 - 6458,' 810 sxs cmt

Perfs, 6019

Perfs, 6378
PBTD 6445
TD 6458



	LOWIS	WV	above Perfs
Drain	171 5689	0.2 5690	329
Check	64 5753	0.2 5753	266
ESP	69 5822	0.2 5822	197
Intake	24 5845		
EOP	15 5861	-15.1 5846	173

Notes:

1-

2-

3-

Top	Btm	spf	Ft	pfs	Zn
6019	6024	1	5	5	1 P
6027	6030	1	3	3	1 P
6035	6037	1	2	2	1 P
6051	6063	1	12	12	1 P
6093	6100	1	7	7	1 P
6113	6121	1	8	8	1 P
6162	6177	1	15	15	3 P

Top	Btm	spf	Ft	pfs	Zn
6209	6214	1	5	5	3 P
6278	6288	1	#	10	5 P
6296	6313	1	#	17	5 P
6332	6346	1	#	14	5 P
6352	6354	1	2	2	5 P
6358	6365	1	7	7	5 P
6369	6378	1	9	9	5 P