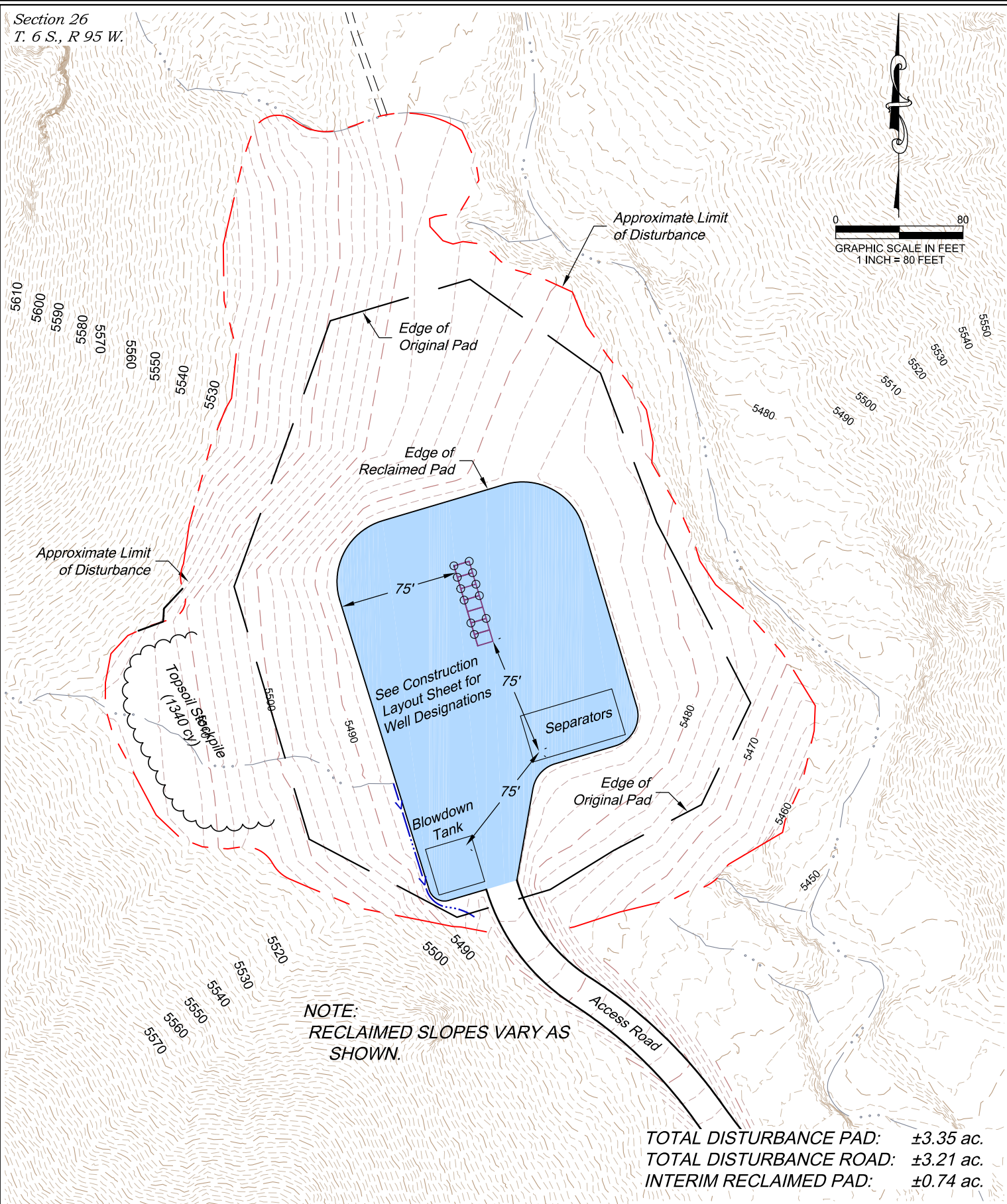
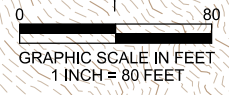


Section 26
T. 6 S., R 95 W.



NOTE:
RECLAIMED SLOPES VARY AS SHOWN.

TOTAL DISTURBANCE PAD: ±3.35 ac.
TOTAL DISTURBANCE ROAD: ±3.21 ac.
INTERIM RECLAIMED PAD: ±0.74 ac.

Revised: 10/16/18

SCALE:	1" = 80'
DATE:	1/04/18
PLAT:	7 of 7
PROJECT:	TEP Valley
DFT:	cs

Construction Plan Prepared for:



TEP Rocky Mountain LLC

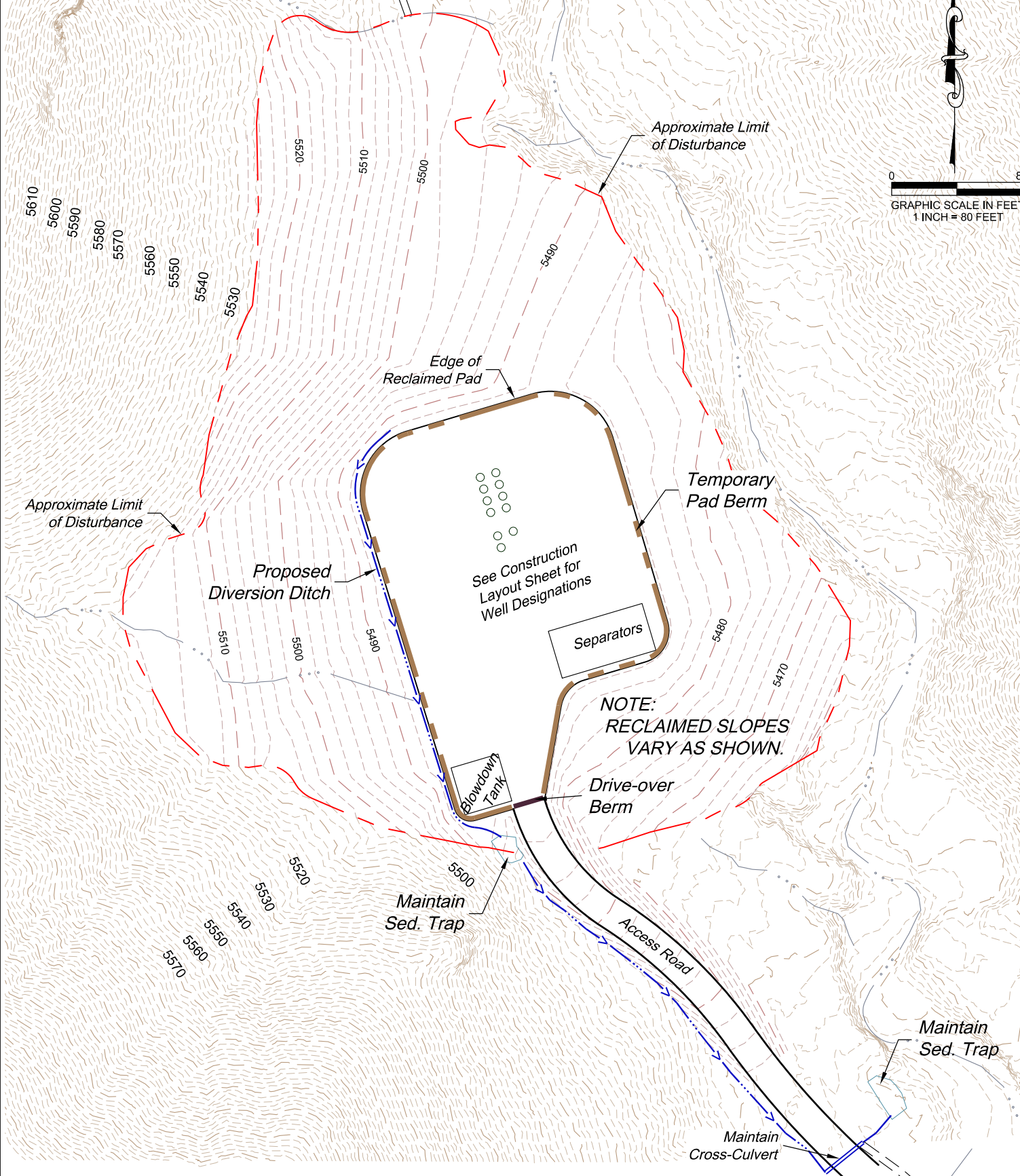
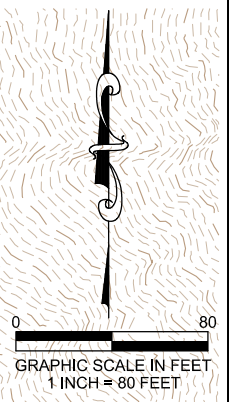
PA 31-26 Drill Pad - Plat 7
RECLAIMED PAD &
PRODUCTION EQUIPMENT

136 East Third Street
Rifle, Colorado 81650
Ph. (970) 625-2720
Fax (970) 625-2773



K:\2017 TERRA\PA 31-26\PA 31-26.dwg

Section 26
T. 6 S., R 95 W.



K:\2017 TERRAPPA 31-26\PA 31-26.dwg

Revised: 10/16/18

SCALE:	1" = 80'
DATE:	10/12/17
PLAT:	2 of 2
PROJECT:	TEP Valley
DFT:	cs

Construction Plan Prepared for:



TEP Rocky Mountain LLC

PA 31-26 Drill Pad
SWMP Exhibit - INTERIM RECLAIM

136 East Third Street
Rifle, Colorado 81650
Ph. (970) 625-2720
Fax (970) 625-2773

