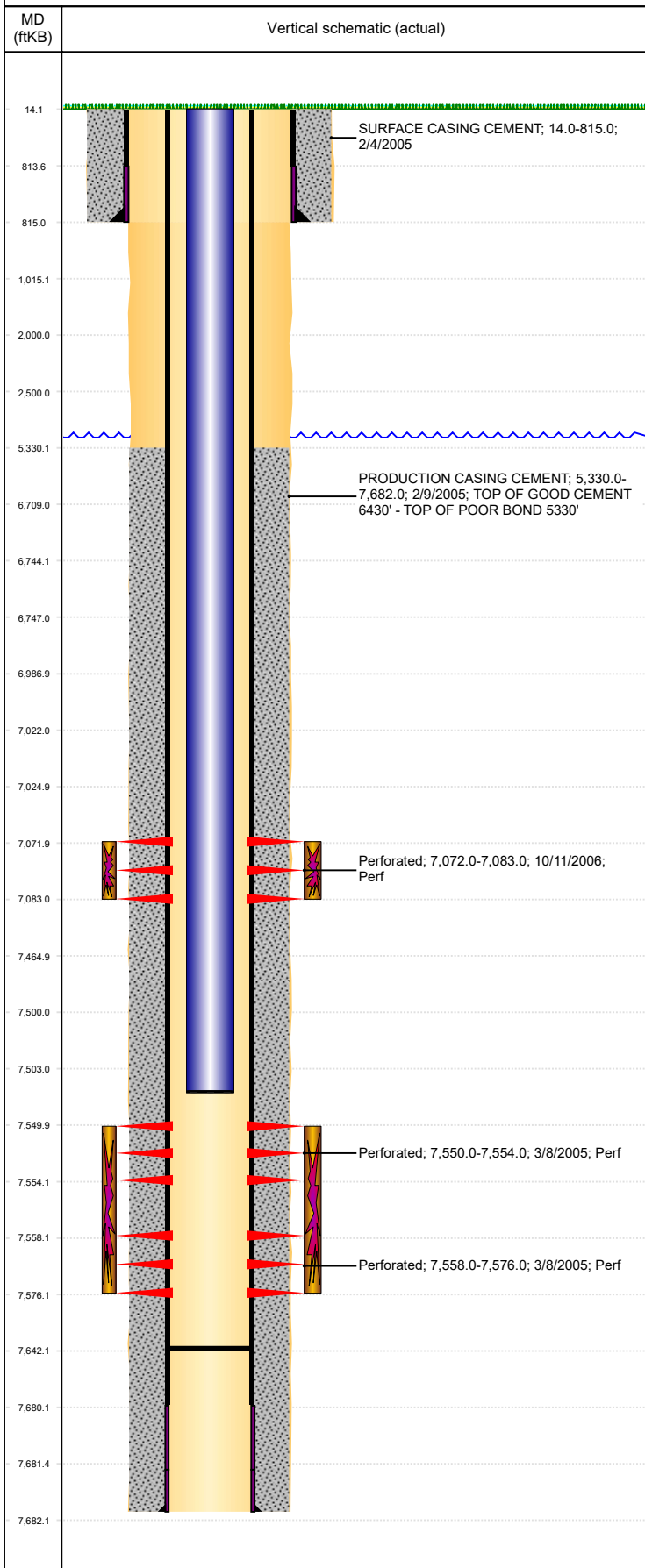


Well Name: PERKINS 32-05

VERTICAL, ORIGINAL HOLE, 4/6/2020 10:05:55 AM



Well Header									
API 05-123-22679		Business Unit DJ BASIN		District 15		Well Config VERTICAL			
KB - GL / MSL (ft... 14.00		Spud Date 2/3/2005		P & A Date		Well Production Status PR		SoRT No	
Comment									
Surface Location (Congressional)									
Qtr 3 SW	Qtr 4 NE	Section 5	Twnshp 2	Twnsh.... N	Range 64	Rng E/... W	Actual Latitude (°) 40.16917850	Actual Longitude (°) -104.57285986	
Wellbore Sections									
Section Des			Size (in)			Act Top, MD (ftKB)		Act Btm, MD (ftKB)	
SURFACE			12 1/4			14		815	
PRODUCTION			7 7/8			815		7,682	
Casing Strings									
Csg Des			Run Date		OD (in)	Wt/Len (lb/ft)	Grade	Top, MD (ftKB)	MD (ftKB)
Surface			2/4/2005		8 5/8	24.00		14.0	815.0
Production			2/9/2005		4 1/2	11.60	N-80	14.0	7,682.0
Cement									
Des					Start Date		Top (ftKB)		Btm (ftKB)
SURFACE CASING CEMENT					2/4/2005		14.0		815.0
PRODUCTION CASING CEMENT					2/9/2005		5,330.0		7,682.0
Zone Statuses									
Zone Name	Status Date	Status	Fluid Type	Job				Prod Method	
CODELL	10/27/2006	PR	Gas	RECOMPLETION, 10/10/2006 00:00				Flowing	
CODELL	3/4/2010	PR	Water						
J SAND	10/27/2006	SI	Gas	RECOMPLETION, 10/10/2006 00:00					
J SAND	4/4/2008	PR	Gas	COMMINGLE ZONES, 4/3/2008 06:00					
Perforation Data									
Linked Zone		Bnch/Stg	Entered Shot Total	Top (ftKB)		Btm (ftKB)		Date	
CODELL, ORIGINAL HOLE			44	7,072.00		7,083.00		10/11/2006	
J SAND, ORIGINAL HOLE			16	7,550.00		7,554.00		3/8/2005	
J SAND, ORIGINAL HOLE			72	7,558.00		7,576.00		3/8/2005	
Stimulation Intervals									
Zone				Start Date		Top (ftKB)		Btm (ftKB)	
CODELL, ORIGINAL HOLE				10/24/2006		7,072.0		7,083.0	
J SAND, ORIGINAL HOLE				3/9/2005		7,550.0		7,576.0	
Other In Hole									
Run Date	Des				Make		OD (in)	Top (ftKB)	Btm (ftKB)
Logs									
Date		Type				Top, MD (ftKB)		Btm, MD (ftKB)	
2/8/2005		Compensated Density				815.0		7,683.0	
2/15/2005		Cement Bond				3,880.0		7,637.0	
5/5/2017		GYRO				14.0		7,500.0	
Plug Back Total Depths									
Date		Type		Com				Depth (ftKB)	
2/9/2005		FLOAT COLLAR						7,642.0	