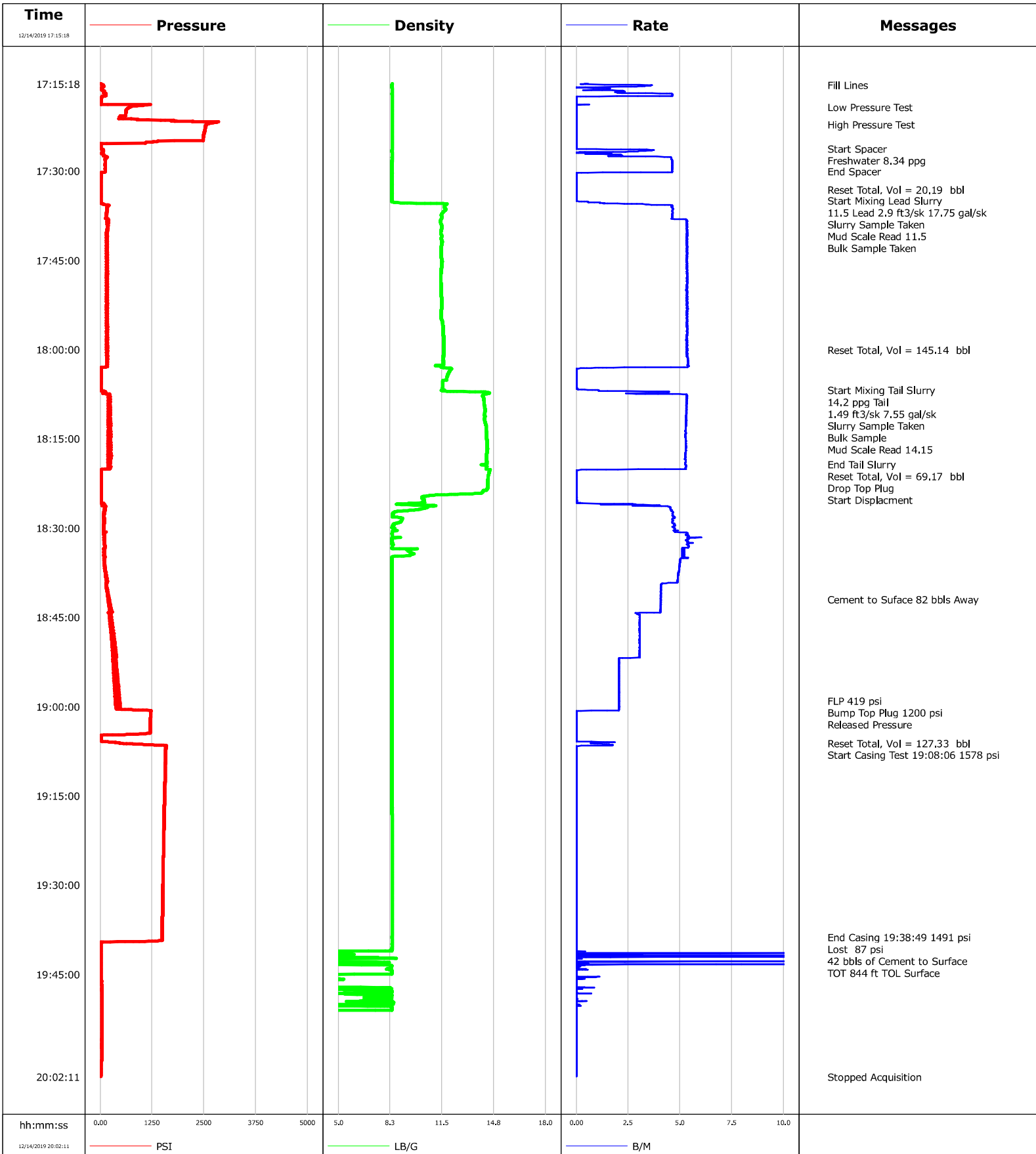


Well	Prince Albert 7-66-3-10-6C	Client	Enerplus
Field	Wildcat	SIR No.	3100687
Engineer	Jermarco Arrington	Job Type	Cem Surface Casing
Country	United States	Job Date	12.14.19



				Customer		Job Number		
				Enerplus		3100687		
Well		Location (legal)		Schlumberger Location		Job Start		
Prince Albert 7-66-3-10-6C		Saskatchewan				Dec/14/2019		
Field		Formation Name / Type		Deviation	Bit Size	Well MD	Well TVD	
Wildcat				deg	in	1636.0 ft	1636.0 ft	
County		State / Province		BHP	BHST	BHCT	Pore Press. Gradient	
Weld		Colorado		psi	105 degF	80 degF	lb/gal	
Well Master		API / UWI						
0064125725		05123461470000						
Rig Name	Drilled For	Service Via		Casing / Liner				
Cartel X15	Oil	Land		Depth, ft	Size, in	Weight, lb/ft	Grade	
				80.0	16.0	60.0	H40	
Offshore Zone	Well Class	Well Type		1626.0	9.6	36.0	J55	
	New	New Well Completion					8RD	
Drilling Fluid Type		Max. Density	Plastic Viscosity	Tubing / Drill Pipe				
		lb/gal	cP	T/D	Depth, ft	Size, in	Weight, lb/ft	
Service Line	Job Type							
Cementing	Cem Surface Casing							
Max. Allowed Tub. Press	Max. Allowed Ann. Press	WH Connection		Perforations / Open Hole				
psi	psi			Top, ft	Bottom, ft	shot/ft	No. of Shots	
				ft	ft		Total Interval	
				ft	ft		ft	
				ft	ft		Diameter	
							in	
Service Instructions		Treat Down	Displacement	Packer Type		Packer Depth		
Cement 9 5/8" Casing at 1,600 ft 13 1/2" hole, 50% Excess Top of 11.5ppg lead: Surface Top of 14.2ppg tail: 1,100 ft Bring CemNET as a contingency		Casing	124.6 bbl			ft		
		Tubing Vol.	Casing Vol.	Annular Vol.		Openhole Vol.		
		bbl	125.6 bbl	145.4 bbl		134.5 bbl		
Casing / Tubing Secured		1 Hole Vol. Circulated prior to Cement		Casing Tools		Squeeze Job		
<input type="checkbox"/>		<input type="checkbox"/>						
Lift Pressure		psi		Shoe Type		Float		
				Float		Squeeze Type		
Pipe Rotated		Pipe Reciprocated		Shoe Depth		Tool Type		
<input type="checkbox"/>		<input type="checkbox"/>		1626.0 ft				
No. Centralizers		Top Plugs	Bottom Plugs		Stage Tool Type		Tool Depth	
							ft	
Cement Head Type				Stage Tool Depth		Tail Pipe Size		
				ft		in		
Job Scheduled For		Arrived on Location	Leave Location		Collar Type		Tail Pipe Depth	
Dec/14/2019 11:00		Dec/14/2019 11:00	Dec/14/2019 20:00		Float		ft	
				Collar Depth		Sqz. Total Vol.		
				1602.0 ft		bbl		
Date	Time 24-hr clock	Treating Pressure PSI	Flow Rate B/M	Density LB/G	Message			
12/14/2019	17:15:18	17	0.0	0.0	Started Acquisition			
12/14/2019	17:15:28	40	0.0	0.0	Fill Lines			
12/14/2019	17:16:48	85	0.0	0.0				
12/14/2019	17:18:18	24	0.0	0.0				
12/14/2019	17:19:13	741	0.0	0.0	Low Pressure Test			
12/14/2019	17:19:48	622	0.0	0.0				
12/14/2019	17:21:18	742	0.0	0.0				
12/14/2019	17:22:08	2589	0.0	0.0	High Pressure Test			
12/14/2019	17:22:48	2537	0.0	0.0				
12/14/2019	17:24:18	2488	0.0	0.0				
12/14/2019	17:25:48	15	0.0	0.0				
12/14/2019	17:27:00	66	0.0	0.0	Freshwater 8.34 ppg			
12/14/2019	17:27:18	86	0.0	0.0				
12/14/2019	17:28:48	118	0.0	0.0				
12/14/2019	17:30:03	122	0.0	0.0	End Spacer			
12/14/2019	17:30:18	35	0.0	0.0				
12/14/2019	17:31:48	21	0.0	0.0				
12/14/2019	17:33:10	19	0.0	0.0	Reset Total, Vol = 20.19 bbl			
12/14/2019	17:33:18	18	0.0	0.0				
12/14/2019	17:34:59	19	0.0	0.0	Start Mixing Lead Slurry			
12/14/2019	17:35:14	20	0.0	0.0	11.5 Lead 2.9 ft3/sk 17.75 gal/sk			

Well		Field		Job Start	Customer	Job Number
Prince Albert 7-66-3-10-6C		Wildcat		Dec/14/2019	Enerplus	3100687
Date	Time 24-hr clock	Treating Pressure PSI	Flow Rate B/M	Density LB/G	Message	
12/14/2019	17:36:18	164	0.0	0.0		
12/14/2019	17:37:48	147	0.0	0.0		
12/14/2019	17:38:00	148	0.0	0.0	Mud Scale Read 11.5	
12/14/2019	17:39:18	177	0.0	0.0		
12/14/2019	17:40:00	169	0.0	0.0	Bulk Sample Taken	
12/14/2019	17:40:48	148	0.0	0.0		
12/14/2019	17:42:18	164	0.0	0.0		
12/14/2019	17:43:48	167	0.0	0.0		
12/14/2019	17:45:18	148	0.0	0.0		
12/14/2019	17:46:48	166	0.0	0.0		
12/14/2019	17:48:18	164	0.0	0.0		
12/14/2019	17:49:48	173	0.0	0.0		
12/14/2019	17:51:18	172	0.0	0.0		
12/14/2019	17:52:48	165	0.0	0.0		
12/14/2019	17:54:18	163	0.0	0.0		
12/14/2019	17:55:48	173	0.0	0.0		
12/14/2019	17:57:18	167	0.0	0.0		
12/14/2019	17:58:48	165	0.0	0.0		
12/14/2019	18:00:05	162	0.0	0.0	Reset Total, Vol = 145.14 bbl	
12/14/2019	18:00:18	174	0.0	0.0		
12/14/2019	18:01:48	159	0.0	0.0		
12/14/2019	18:03:18	25	0.0	0.0		
12/14/2019	18:04:48	23	0.0	0.0		
12/14/2019	18:06:50	31	0.0	0.0	Start Mixing Tail Slurry	
12/14/2019	18:07:00	30	0.0	0.0	14.2 ppg Tail	
12/14/2019	18:07:30	224	0.0	0.0	1.49 ft3/sk 7.55 gal/sk	
12/14/2019	18:07:48	199	0.0	0.0		
12/14/2019	18:09:00	211	0.0	0.0	Slurry Sample Taken	
12/14/2019	18:09:18	231	0.0	0.0		
12/14/2019	18:10:48	225	0.0	0.0		
12/14/2019	18:12:00	250	0.0	0.0	Bulk Sample	
12/14/2019	18:12:18	216	0.0	0.0		
12/14/2019	18:13:48	243	0.0	0.0		
12/14/2019	18:15:00	234	0.0	0.0	Mud Scale Read 14.15	
12/14/2019	18:15:18	205	0.0	0.0		
12/14/2019	18:16:48	239	0.0	0.0		
12/14/2019	18:18:18	254	0.0	0.0		
12/14/2019	18:19:16	208	0.0	0.0	End Tail Slurry	
12/14/2019	18:19:48	205	0.0	0.0		
12/14/2019	18:20:47	29	0.0	0.0	Reset Total, Vol = 69.17 bbl	
12/14/2019	18:21:18	27	0.0	0.0		
12/14/2019	18:22:20	29	0.0	0.0	Drop Top Plug	
12/14/2019	18:22:48	30	0.0	0.0		
12/14/2019	18:24:53	30	0.0	0.0	Start Displacement	
12/14/2019	18:25:48	39	0.0	0.0		
12/14/2019	18:27:18	102	0.0	0.0		
12/14/2019	18:28:48	103	0.0	0.0		
12/14/2019	18:30:18	83	0.0	0.0		
12/14/2019	18:31:48	104	0.0	0.0		
12/14/2019	18:33:18	109	0.0	0.0		
12/14/2019	18:34:48	108	0.0	0.0		
12/14/2019	18:36:18	109	0.0	0.0		
12/14/2019	18:37:48	130	0.0	0.0		
12/14/2019	18:39:18	142	0.0	0.0		

Well		Field		Job Start	Customer	Job Number
Prince Albert 7-66-3-10-6C		Wildcat		Dec/14/2019	Enerplus	3100687
Date	Time 24-hr clock	Treating Pressure PSI	Flow Rate B/M	Density LB/G	Message	
12/14/2019	18:42:00	191	0.0	0.0	Cement to Surface 82 bbls Away	
12/14/2019	18:42:18	197	0.0	0.0		
12/14/2019	18:43:48	239	0.0	0.0		
12/14/2019	18:45:18	231	0.0	0.0		
12/14/2019	18:46:48	289	0.0	0.0		
12/14/2019	18:48:18	292	0.0	0.0		
12/14/2019	18:49:48	351	0.0	0.0		
12/14/2019	18:51:18	363	0.0	0.0		
12/14/2019	18:52:48	374	0.0	0.0		
12/14/2019	18:55:48	369	0.0	0.0		
12/14/2019	18:57:18	375	0.0	0.0		
12/14/2019	18:58:48	469	0.0	0.0		
12/14/2019	18:59:00	378	0.0	0.0	FLP 419 psi	
12/14/2019	19:00:00	427	0.0	0.0	Bump Top Plug 1200 psi	
12/14/2019	19:00:18	447	0.0	0.0		
12/14/2019	19:01:48	1216	0.0	0.0		
12/14/2019	19:03:03	1212	0.0	0.0	Released Pressure	
12/14/2019	19:03:18	1211	0.0	0.0		
12/14/2019	19:04:48	178	0.0	0.0		
12/14/2019	19:06:10	472	0.0	0.0	Reset Total, Vol = 127.33 bbl	
12/14/2019	19:06:18	720	0.0	0.0		
12/14/2019	19:07:48	1580	0.0	0.0		
12/14/2019	19:08:06	1578	0.0	0.0	Start Casing Test 19:08:06 1578 psi	
12/14/2019	19:09:18	1573	0.0	0.0		
12/14/2019	19:10:48	1566	0.0	0.0		
12/14/2019	19:12:18	1561	0.0	0.0		
12/14/2019	19:13:48	1557	0.0	0.0		
12/14/2019	19:15:18	1552	0.0	0.0		
12/14/2019	19:16:48	1547	0.0	0.0		
12/14/2019	19:18:18	1543	0.0	0.0		
12/14/2019	19:19:48	1538	0.0	0.0		
12/14/2019	19:21:18	1534	0.0	0.0		
12/14/2019	19:22:48	1531	0.0	0.0		
12/14/2019	19:24:18	1526	0.0	0.0		
12/14/2019	19:25:48	1523	0.0	0.0		
12/14/2019	19:27:18	1520	0.0	0.0		
12/14/2019	19:28:48	1515	0.0	0.0		
12/14/2019	19:30:18	1512	0.0	0.0		
12/14/2019	19:31:48	1509	0.0	0.0		
12/14/2019	19:33:18	1505	0.0	0.0		
12/14/2019	19:34:48	1501	0.0	0.0		
12/14/2019	19:36:18	1497	0.0	0.0		
12/14/2019	19:37:48	1494	0.0	0.0		
12/14/2019	19:38:49	1491	0.0	0.0	End Casing 19:38:49 1491 psi	
12/14/2019	19:39:18	1491	0.0	0.0		
12/14/2019	19:40:00	19	0.0	0.0	Lost 87 psi	
12/14/2019	19:40:48	20	0.0	0.0		
12/14/2019	19:41:00	19	0.0	0.0	42 bbls of Cement to Surface	

Well Prince Albert 7-66-3-10-6C	Field Wildcat	Job Start Dec/14/2019	Customer Enerplus	Job Number 3100687
---	-------------------------	---------------------------------	-----------------------------	------------------------------

Post Job Summary

Average Pump Rates, bbl/min					Volume of Fluid Injected, bbl			
Slurry	N2	Mud	Maximum Rate		Total Slurry	Mud	Spacer	N2
Treating Pressure Summary, psi					Breakdown Fluid			
Maximum	Final	Average	Bump Plug to	Breakdown	Type	Volume bbl		Density lb/gal
	0							
Avg. N2 Percent %	Designed Slurry Volume 0,0 bbl		Displacement bbl	Mix Water Temp degF	Cement Circulated to Surface? <input type="checkbox"/>	Volume bbl		
					Washed Thru Perfs <input type="checkbox"/>	To ft		
Customer or Authorized Representative Ron Garner			Schlumberger Supervisor Jermarco Arrington			Circulation Lost <input type="checkbox"/>	Job Completed <input type="checkbox"/>	
					-	-		