



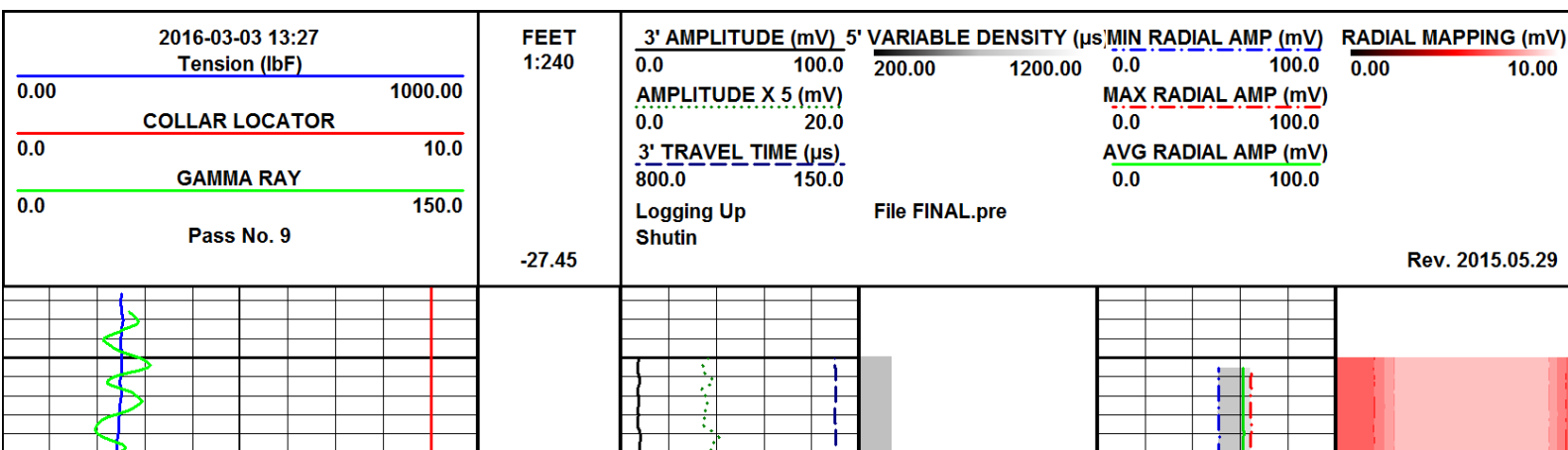
RADIAL BOND LOG
GAMMA RAY
CCL

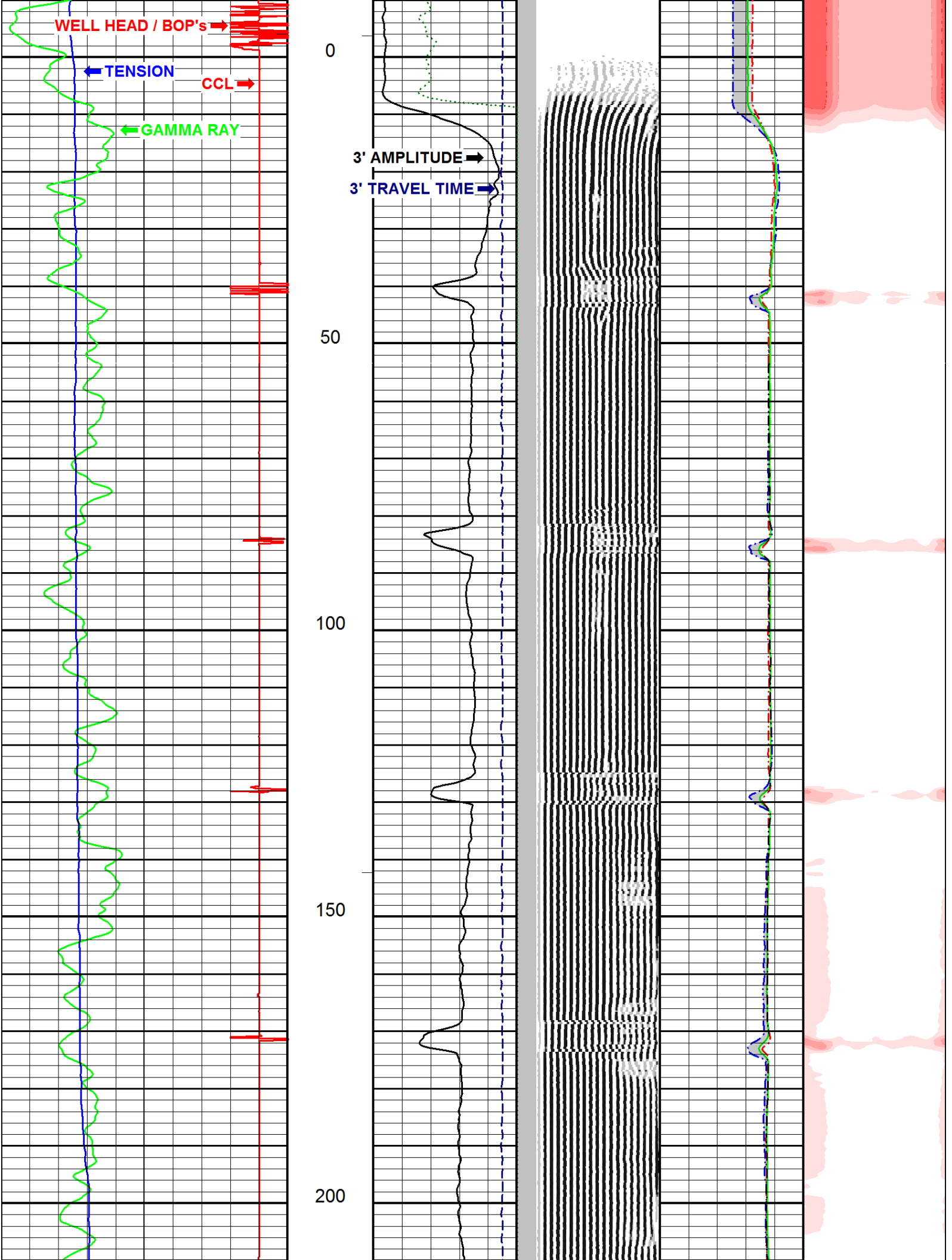
[illegible]

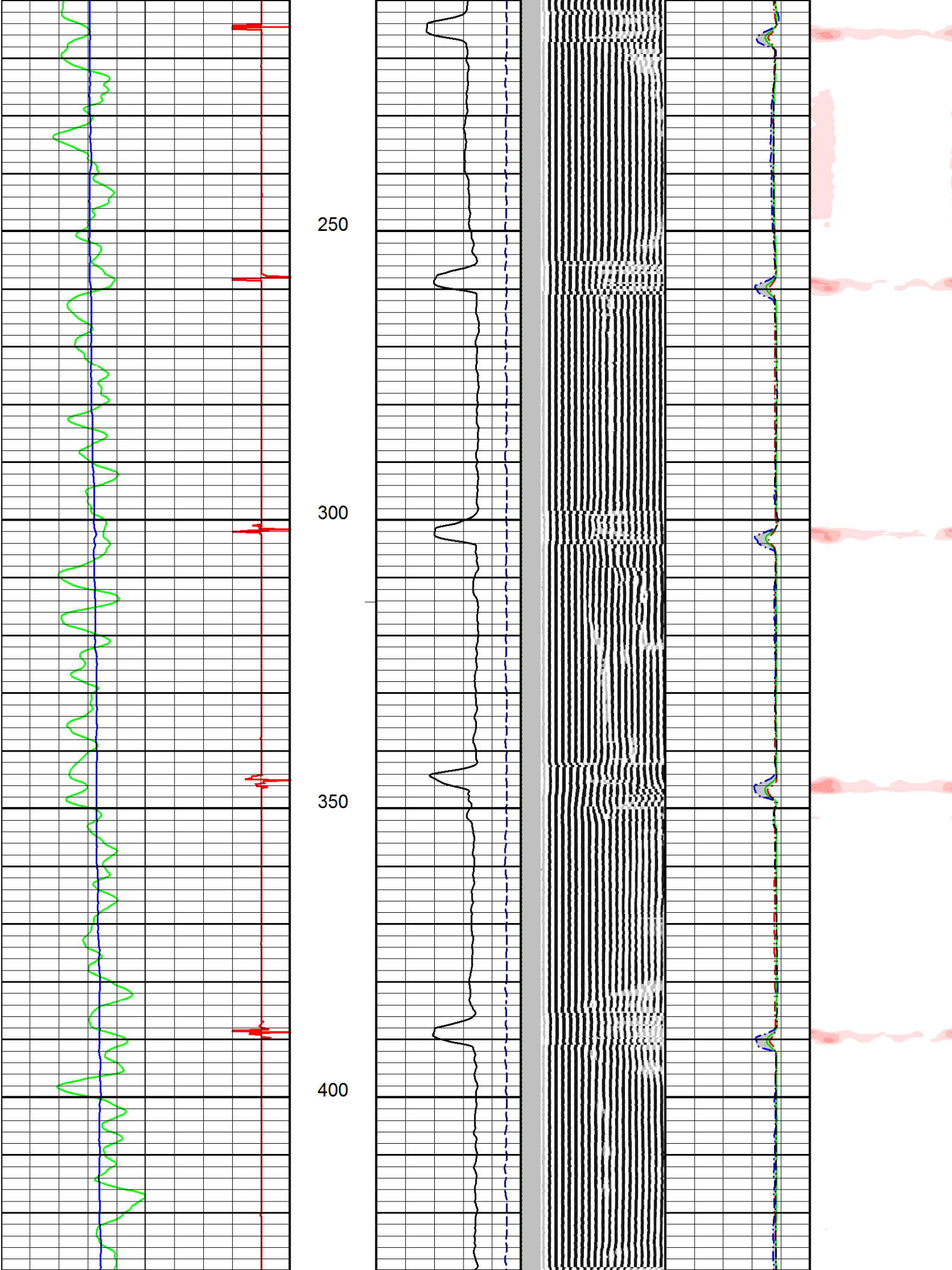
Remarks: NO CORRELATION LOG AVAILABLE

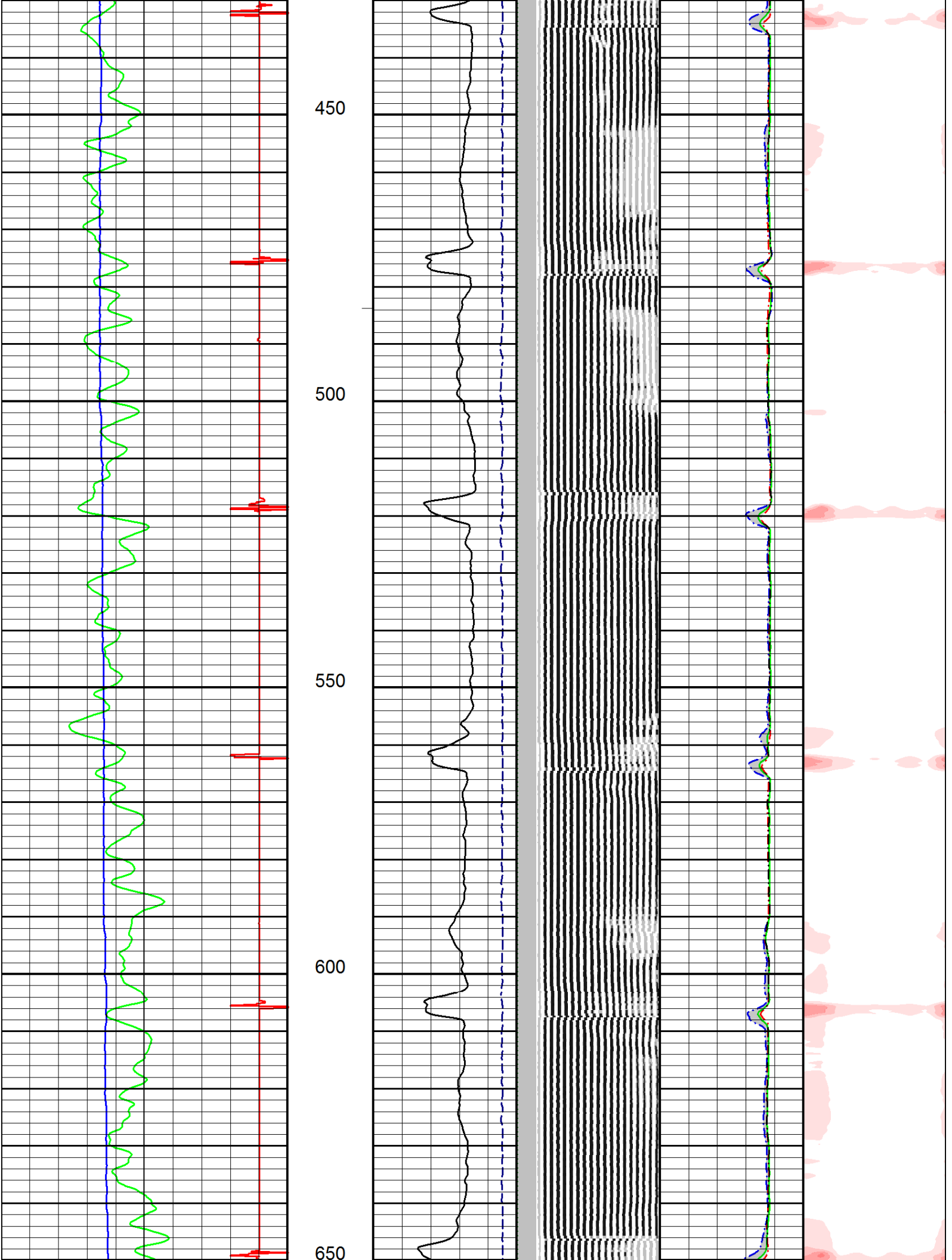
Previous Well Information	
Depth Control Log	NO DEPTH CORRECTIONS MADE
Perforated	
Bridge Plug Set At	
Cement Retainer Set At	
Production Packer Set At	

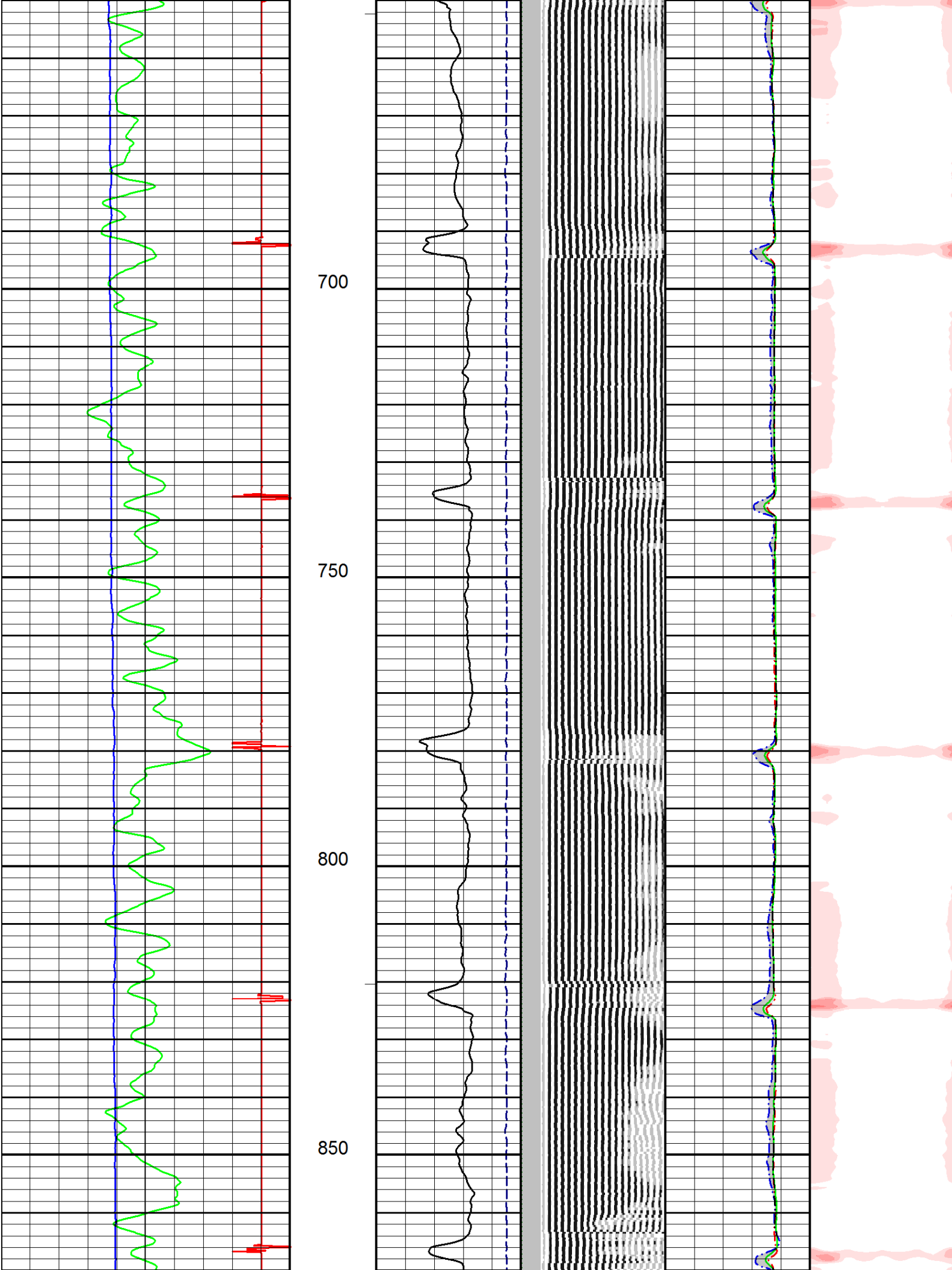
All interpretations are opinions based on inferences from electrical or other measurements and we cannot, and do not guarantee the accuracy or correctness of any interpretations, and we shall not, except in the case of gross or willful negligence on our part, be liable or responsible for any loss, costs, damages or expenses incurred or sustained by anyone resulting from any interpretation made by any of our officers, agents, or employees. These interpretations are also subject to our general terms and conditions as set out in our current price schedule.

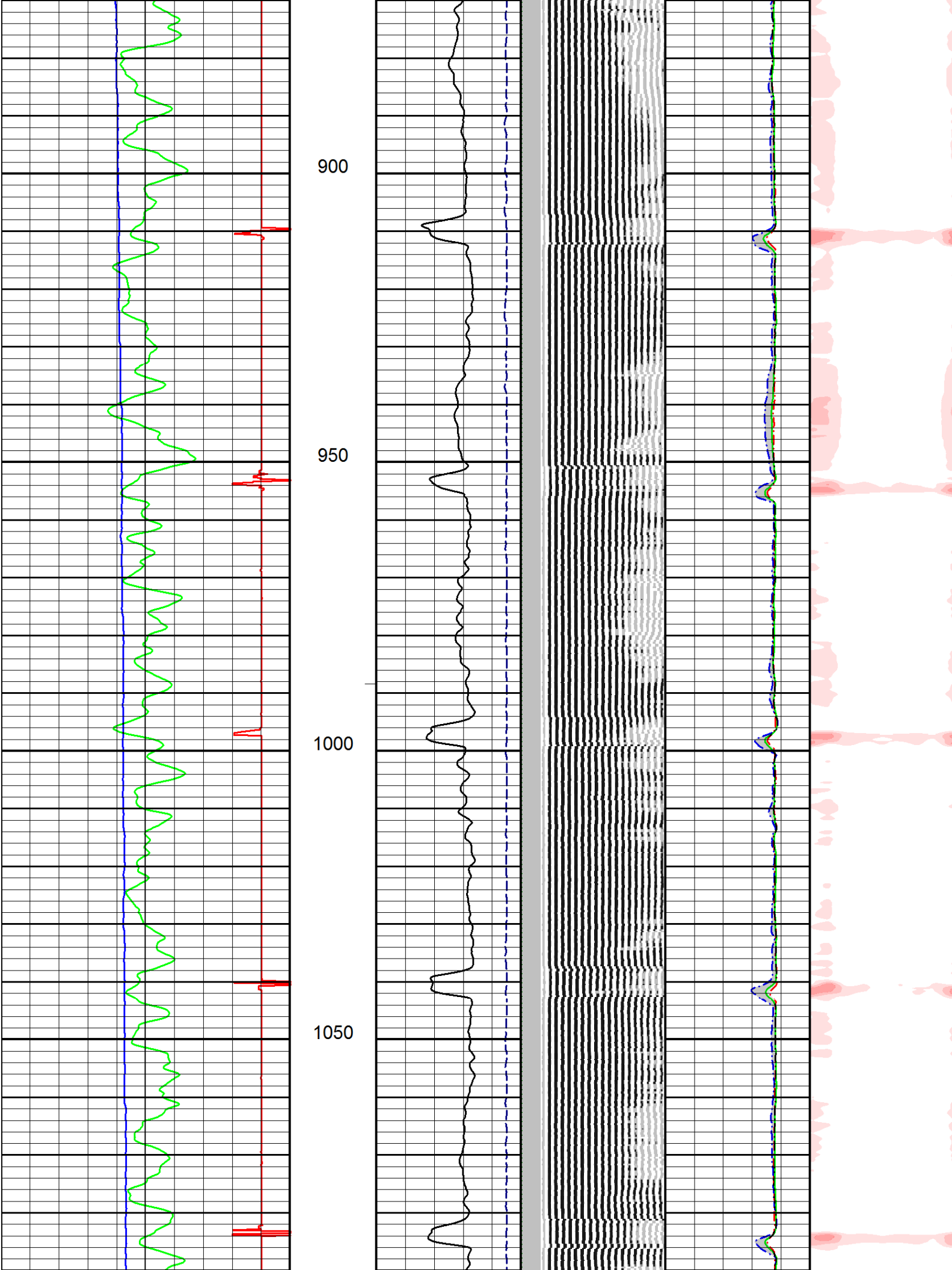


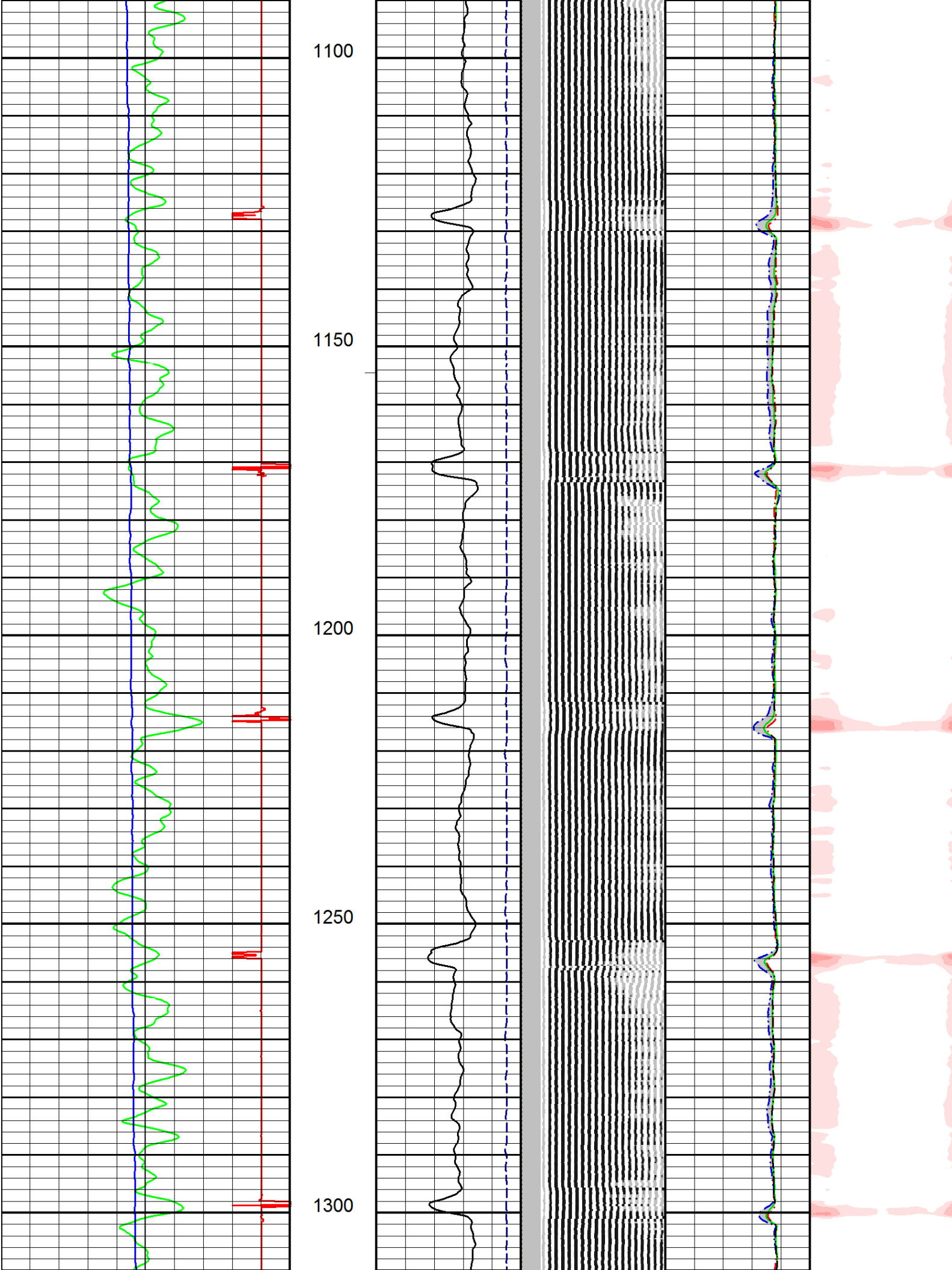


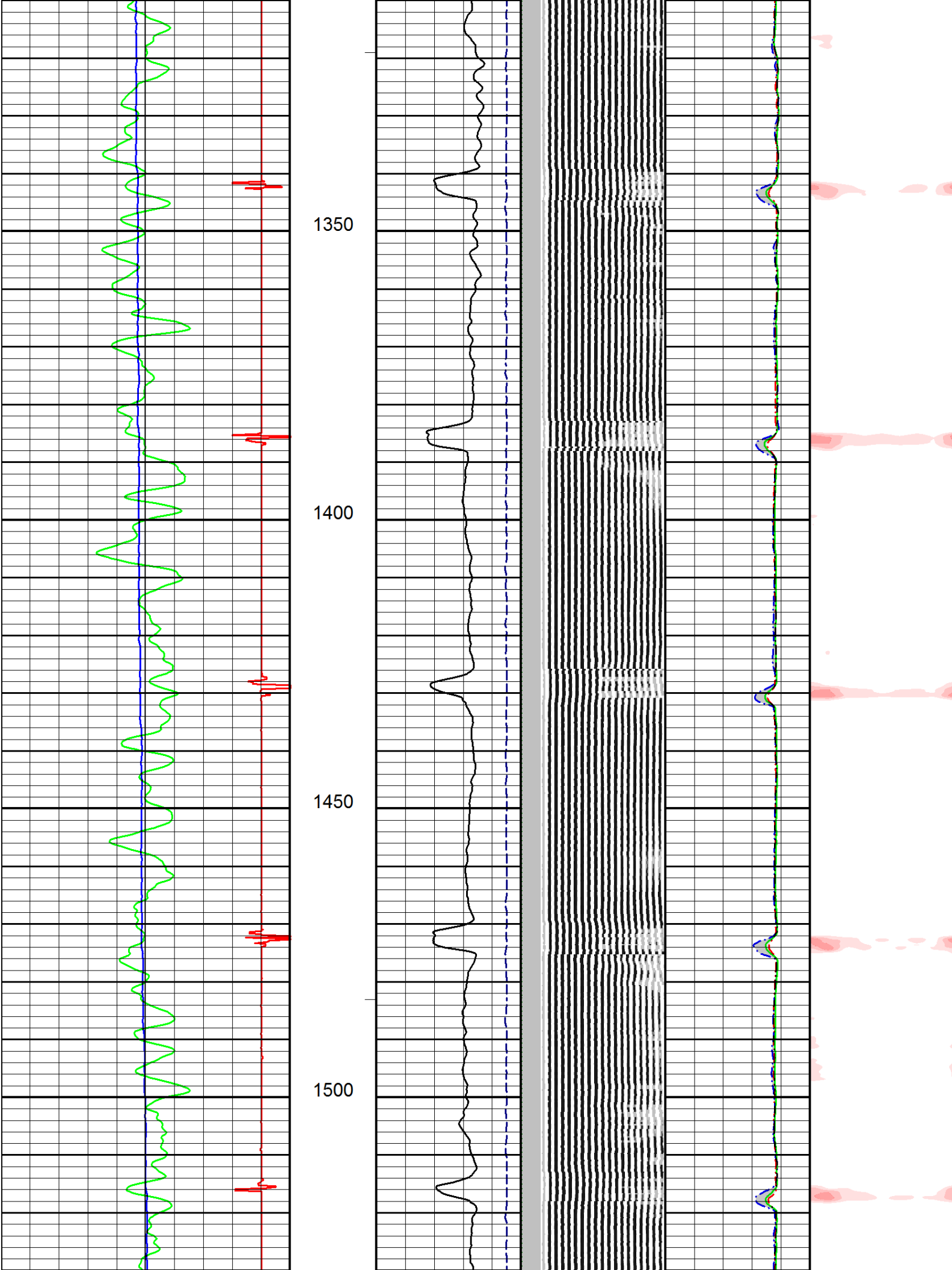


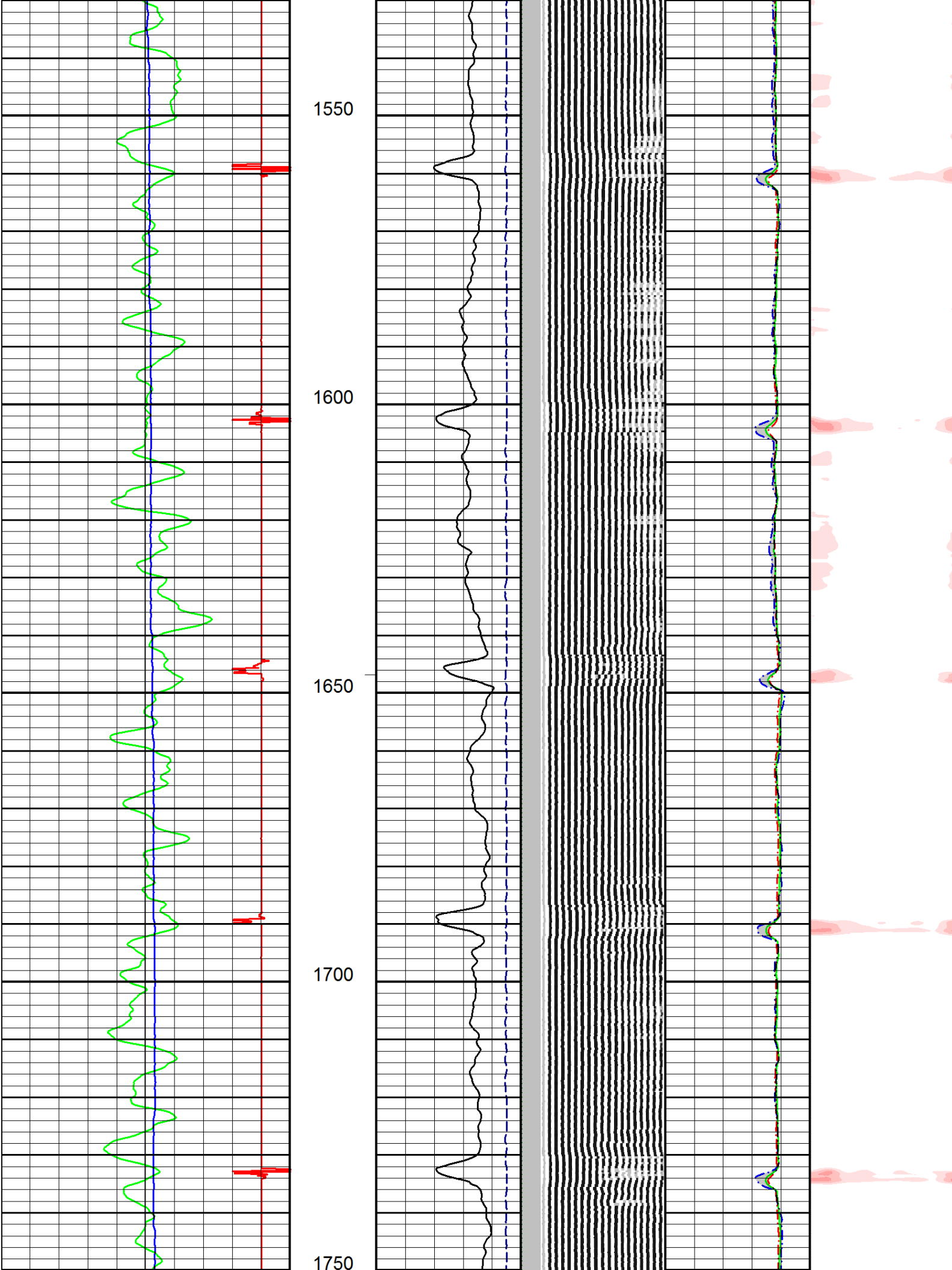


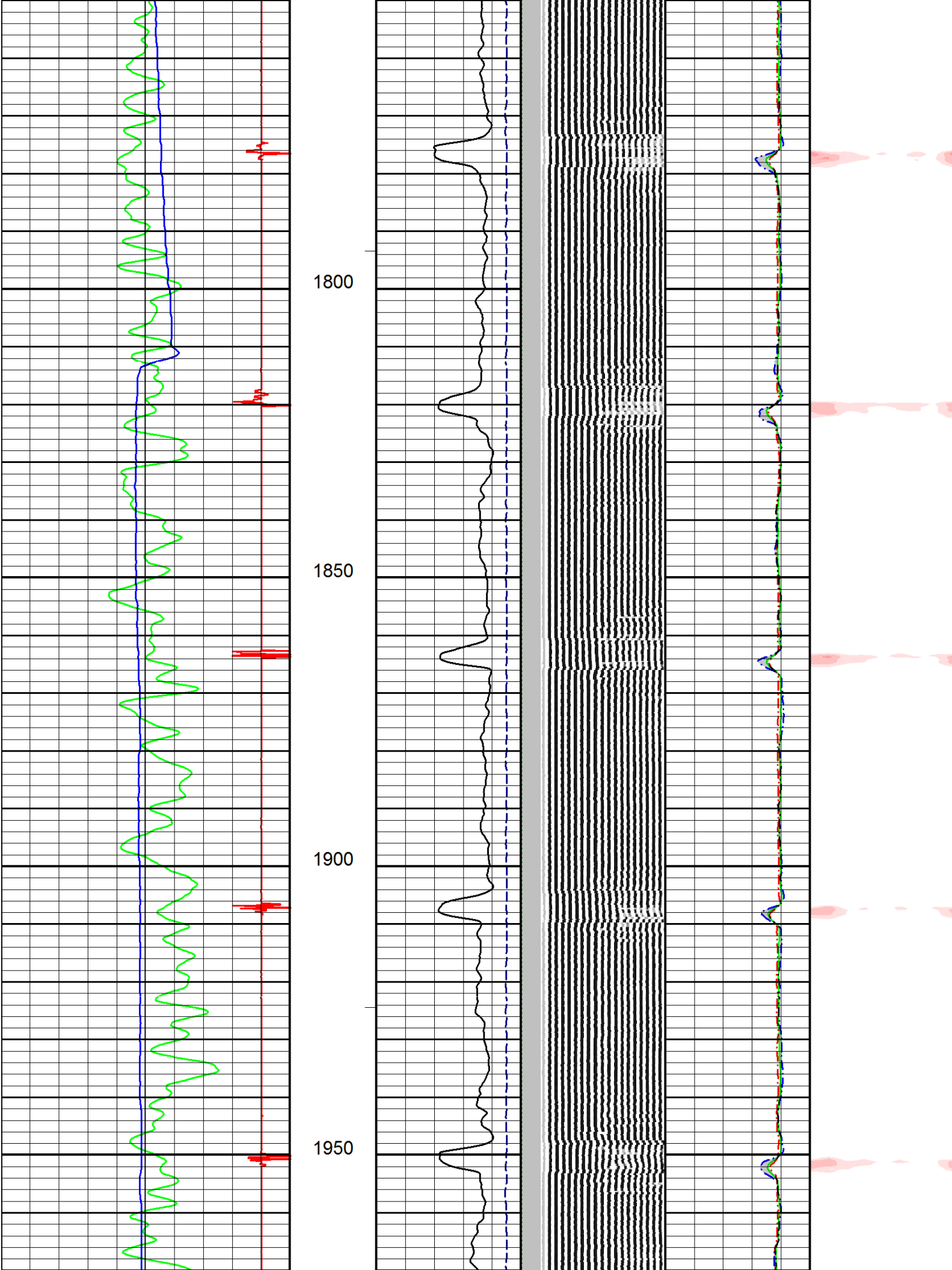


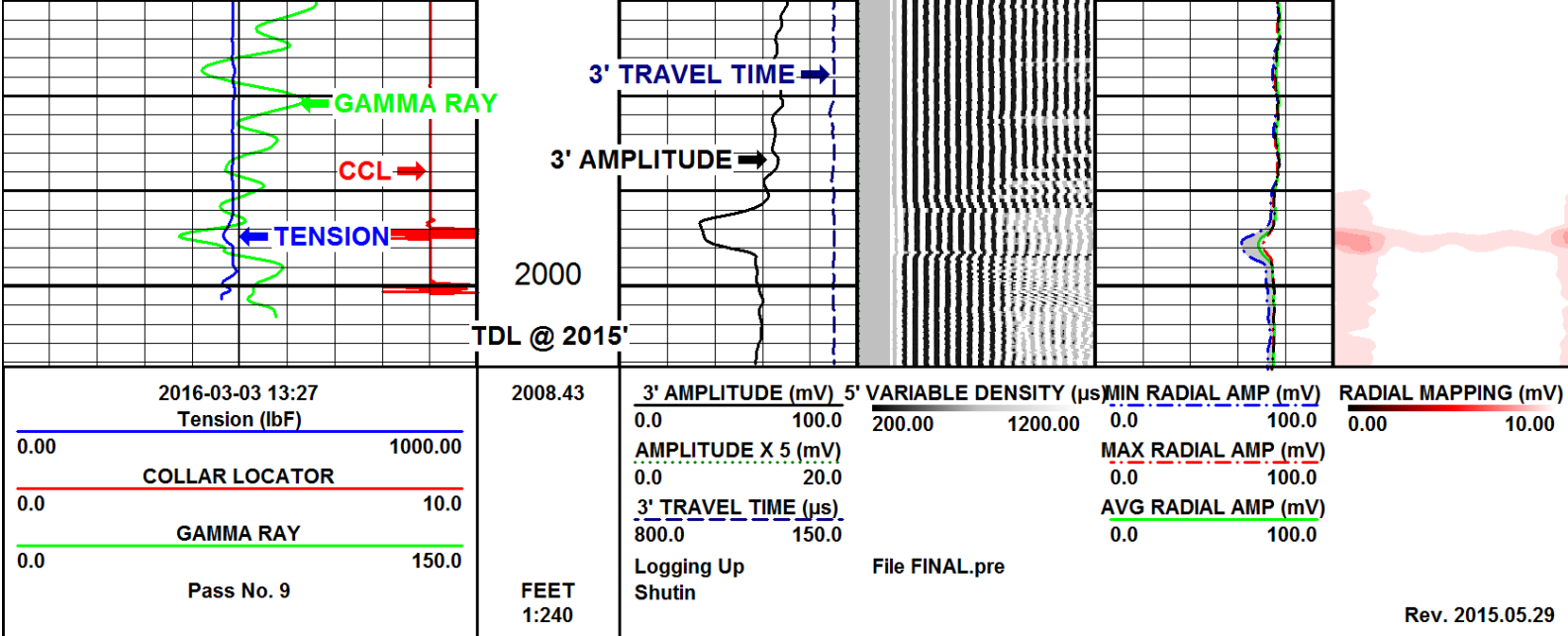












Company PDC ENERGY INC.

Well MILLAGE 23-3

Field WATTENBERG - 90750

County WELD State COLORADO

1/4'S NESW SEC 3 TWP. 5N RGE. 64W