

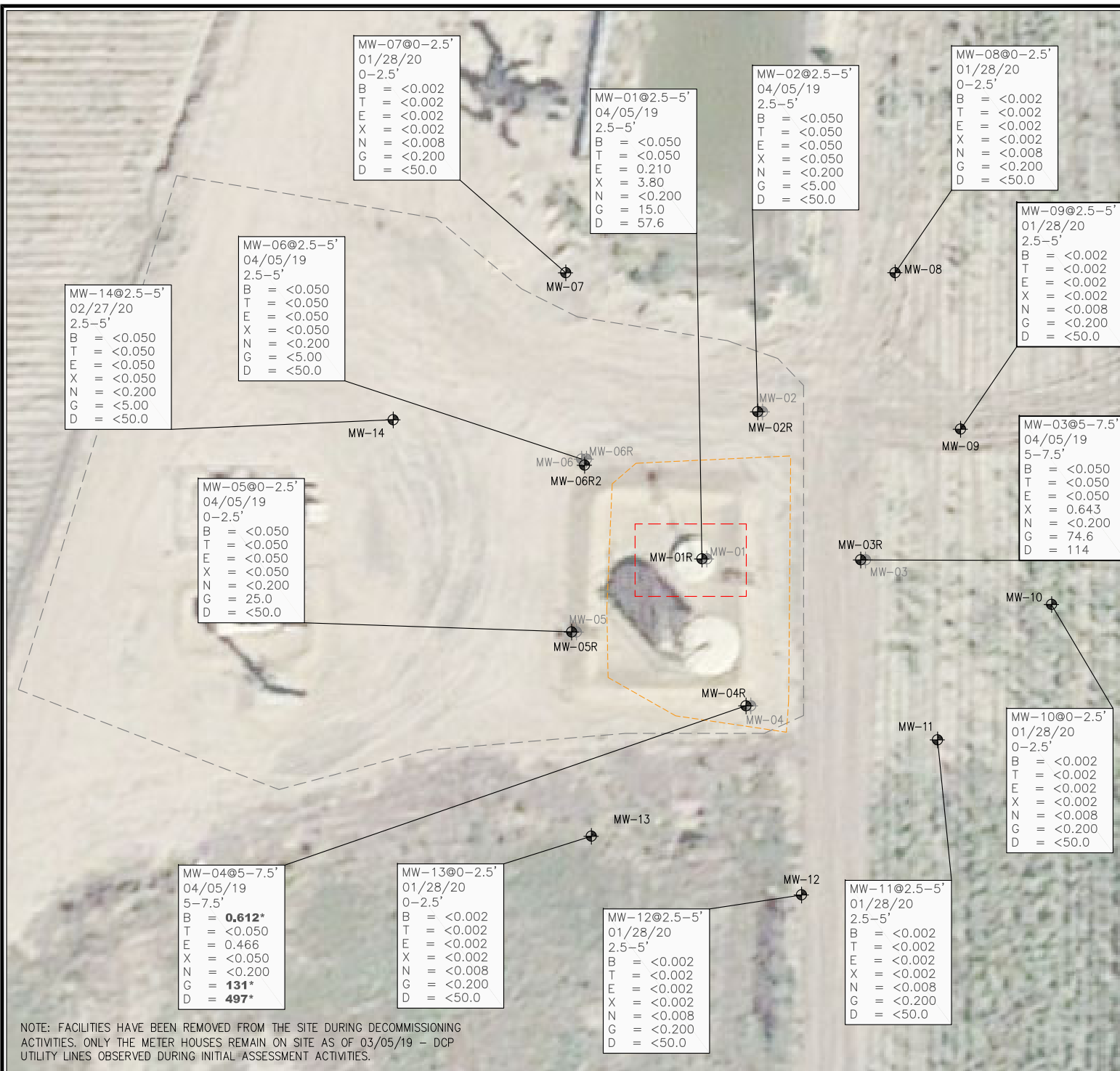


## **FIGURES**

**Figure 1: Monitoring Well Soil Analytical Map**

**Figure 2: Groundwater Analytical Map (02/12/20 & 03/04/20)**

**Figure 3: Groundwater Elevation Map (02/12/20)**



**LEGEND**

- APPROXIMATE TANK BATTERY BOUNDARY
- INITIAL EXCAVATION BOUNDARIES
- APPROXIMATE EXCAVATION BOUNDARIES
- APPROXIMATE MONITORING WELL LOCATIONS
- DESTROYED (DES) MONITORING WELL LOCATIONS

**PARAMETERS**

**SOIL SAMPLE LOCATION**  
DATE  
DEPTH (FEET)  
B = BENZENE (mg/kg)  
T = TOLUENE (mg/kg)  
E = ETHYLBENZENE (mg/kg)  
X = TOTAL XYLENES (mg/kg)  
N = NAPHTHALENE (mg/kg)  
G = TPH-GRO (mg/kg)  
D = TPH-DRO (mg/kg)

mg/kg = MILLIGRAMS PER KILOGRAM

TPH-GRO = TOTAL PETROLEUM HYDROCARBONS - GASOLINE RANGE ORGANICS  
TPH-DRO = TOTAL PETROLEUM HYDROCARBONS - DIESEL RANGE ORGANICS

NOTE: VALUES PRESENTED WITH A LESS THAN SYMBOL (<) DID NOT CONTAIN CONCENTRATIONS AT OR ABOVE LABORATORY DETECTION LIMITS

VALUES PRESENTED IN **BOLD** TYPEFACE CONTAIN CONCENTRATIONS EXCEEDING COGCC REGULATORY LIMITS FOR THAT COMPOUND

COGCC - COLORADO OIL AND GAS CONSERVATION COMMISSION

\*IMPACTS OBSERVED IN MONITORING WELL MW-04 WERE REMOVED DURING SOURCE EXCAVATION ACTIVITIES.

0' 30'

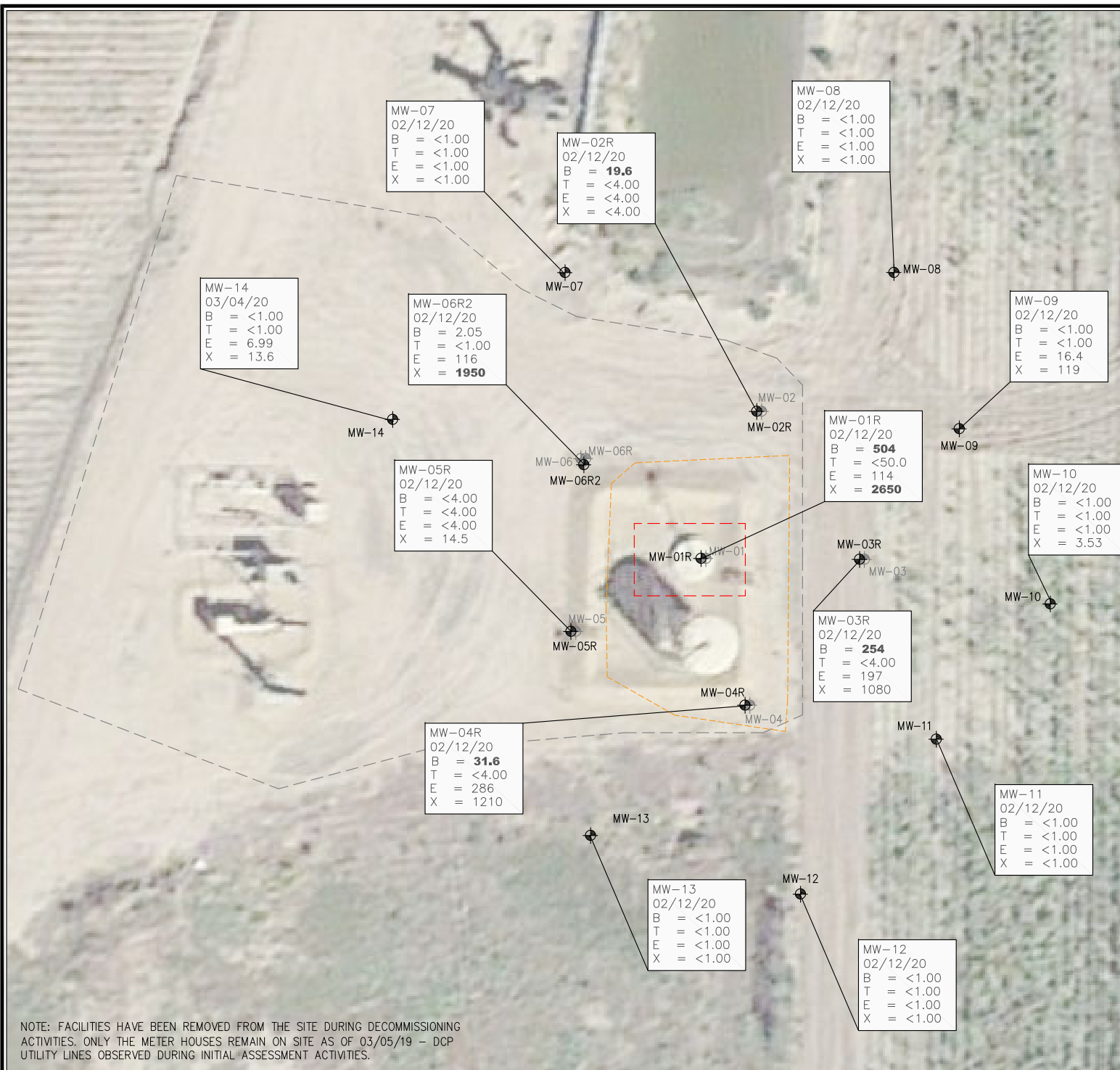
APPROXIMATE SCALE IN FEET

MONITORING WELL SOIL ANALYTICAL MAP  
AGRICULTURAL PRODUCTS FEDERAL #32-17  
HISTORICAL RELEASE  
40.2695761 / -104.797120  
SW1/4 NE1/4 SEC.32 T4N R66W 6PM  
WELD COUNTY, COLORADO  
REMEDATION # 12471

DATE: 03/12/20  
DRAWN BY: GEC  
FIG. NO. 1

**EAGLE ENVIRONMENTAL CONSULTING, INC.**  
8000 W 44th Ave, Wheat Ridge, CO 80033  
Ph: 303-433-0479 • F: 303-325-5449

NOTE: FACILITIES HAVE BEEN REMOVED FROM THE SITE DURING DECOMMISSIONING ACTIVITIES. ONLY THE METER HOUSES REMAIN ON SITE AS OF 03/05/19 - DCP UTILITY LINES OBSERVED DURING INITIAL ASSESSMENT ACTIVITIES.



**LEGEND**

- APPROXIMATE TANK BATTERY BOUNDARY
- INITIAL EXCAVATION BOUNDARIES
- APPROXIMATE EXCAVATION BOUNDARIES
- ⊕ APPROXIMATE MONITORING WELL LOCATIONS
- ⊕ DESTROYED (DES) MONITORING WELL LOCATIONS

**PARAMETERS**

SAMPLE LOCATION  
DATE  
B = BENZENE (µg/L)  
T = TOLUENE (µg/L)  
E = ETHYLBENZENE (µg/L)  
X = TOTAL XYLENES (µg/L)

µg/L = MICROGRAMS PER LITER

VALUES PRESENTED WITH A LESS THAN SYMBOL (<) DID NOT CONTAIN CONCENTRATIONS AT OR ABOVE LABORATORY REPORTING LIMITS

VALUES PRESENTED IN **BOLD** TYPEFACE CONTAIN CONCENTRATIONS EXCEEDING COGCC TABLE 910-1 REGULATORY LIMITS FOR THAT COMPOUND

COGCC - COLORADO OIL AND GAS CONSERVATION COMMISSION

0' 30'

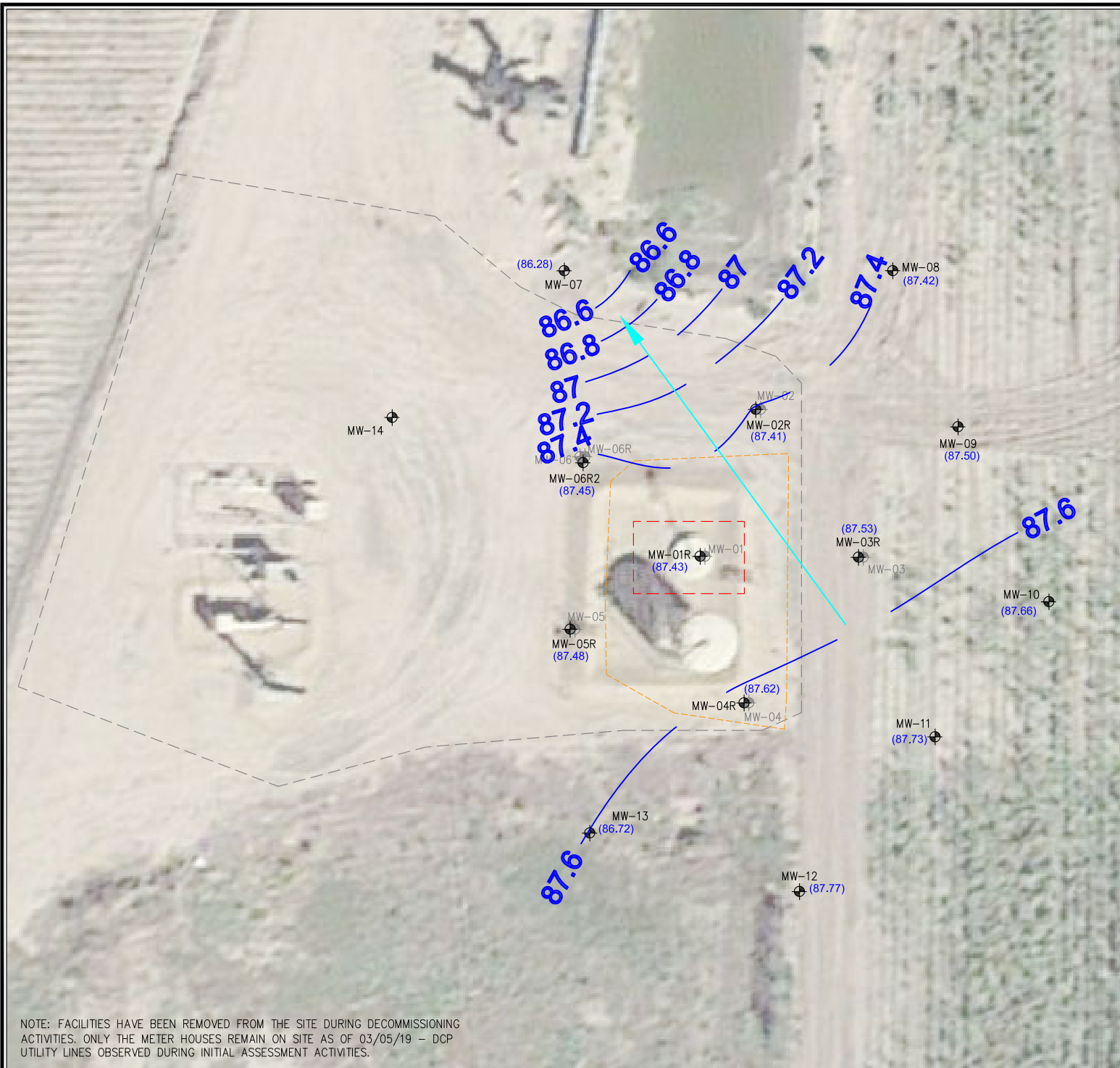
APPROXIMATE SCALE IN FEET

**GROUNDWATER ANALYTICAL MAP**  
(02/12/20 & 03/04/20)  
AGRICULTURAL PRODUCTS FEDERAL #32-17  
HISTORICAL RELEASE  
40.2695761 / -104.797120  
SW1/4 NE1/4 SEC.32 T4N R66W 6PM  
WELD COUNTY, COLORADO  
REMEDATION # 12471

DATE: 03/12/20  
DRAWN BY: GEC  
FIG. NO. 2

**EAGLE ENVIRONMENTAL CONSULTING, INC.**  
8000 W 44th Ave, Wheat Ridge, CO 80033  
Ph: 303-433-0479 • F: 303-325-5449

NOTE: FACILITIES HAVE BEEN REMOVED FROM THE SITE DURING DECOMMISSIONING ACTIVITIES. ONLY THE METER HOUSES REMAIN ON SITE AS OF 03/05/19 - DCP UTILITY LINES OBSERVED DURING INITIAL ASSESSMENT ACTIVITIES.



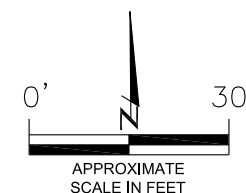
# LEGEND

- APPROXIMATE TANK BATTERY BOUNDARY
- INITIAL EXCAVATION BOUNDARIES
- APPROXIMATE EXCAVATION BOUNDARIES
- ⊕ APPROXIMATE MONITORING WELL LOCATIONS
- ⊕ DESTROYED (DES) MONITORING WELL LOCATIONS
- (87.31) RELATIVE GROUNDWATER ELEVATION (FT.)
- INFERRED GROUNDWATER ELEVATION CONTOUR (FT.)
- APPROXIMATE GROUNDWATER FLOW DIRECTION

FT. = FEET

NOTE:  
GROUNDWATER ELEVATION DATA WAS COLLECTED FROM  
MONITORING WELLS MW-01R THROUGH MW-13 ON 02/12/20.  
MONITORING WELL MW-14 WAS INSTALLED 02/27/20.

GROUNDWATER ELEVATION DATA COLLECTED FROM  
MONITORING WELL MW-13 WAS NOT USED IN THE  
CONSTRUCTION OF INFERRED GROUNDWATER ELEVATION  
CONTOURS.



## GROUNDWATER ELEVATION MAP (02/12/20)

AGRICULTURAL PRODUCTS FEDERAL #32-17  
HISTORICAL RELEASE  
40.269576 / -104.797120  
SW1/4 NE1/4 SEC.32 T4N R66W 6PM  
WELD COUNTY, COLORADO  
REMEDATION # 12471

DATE:  
03/12/20

DRAWN BY:  
GEC

FIG.  
NO. 3



**EAGLE**  
ENVIRONMENTAL  
CONSULTING, INC.  
8000 W 44th Ave, Wheat Ridge, CO 80033  
Ph: 303-433-0479 • F: 303-325-5449

NOTE: FACILITIES HAVE BEEN REMOVED FROM THE SITE DURING DECOMMISSIONING  
ACTIVITIES. ONLY THE METER HOUSES REMAIN ON SITE AS OF 03/05/19 - DCP  
UTILITY LINES OBSERVED DURING INITIAL ASSESSMENT ACTIVITIES.



## **TABLES**

**Table 1: Soil Analytical Results Summary**

**Table 2: Groundwater Analytical Results Summary**

**Table 3: Groundwater Elevation Summary**

TABLE 1  
SOIL ANALYTICAL RESULTS SUMMARY  
AGRICULTURAL PRODUCTS FEDERAL #32-17  
HISTORICAL RELEASE  
40.269576 / -104.797120  
SW¼ NE¼ SEC.32 T4N R66W 6PM  
WELD COUNTY, COLORADO  
REMEDATION # 12471

Sample Location (Latitude/Longitude)	Date	Approximate Depth (feet)	Benzene (mg/kg)	Toluene (mg/kg)	Ethylbenzene (mg/kg)	Total Xylenes (mg/kg)	Naphthalene (mg/kg)	TPH-GRO (mg/kg)	TPH-DRO (mg/kg)	Specific Conductance (mmhos/cm)	pH (pH units)	SAR
<b>COGCC Table 910-1 Regulatory Limits (mg/kg)</b>			<b>0.17</b>	<b>85</b>	<b>100</b>	<b>175</b>	<b>23</b>	<b>500</b>		<b>&lt;4</b>	<b>6 to 9</b>	<b>&lt;12</b>
SS-01 @ 3' (40.269606 / -104.797120)	02/21/19	3	<0.002	<0.002	<0.002	<0.002	<0.008	0.310	<50.0	NA	NA	NA
SS-02 @ 3' (40.269562 / -104.797120)	02/21/19	3	<0.002	<0.002	<0.002	<0.002	<0.008	1.59	263	0.183	8.94	9.55
SS-03 @ 3' (40.269583 / -104.797091)	02/21/19	3	<0.002	<0.002	<0.002	<0.002	<0.008	0.276	56.0	NA	NA	NA
SS-04 @ 3' (40.269583 / -104.797147)	02/21/19	3	<0.002	<0.002	<0.002	<0.002	<0.008	<0.200	<50.0	NA	NA	NA
SS-05 @ 6' (40.269576 / -104.797125)	02/21/19	6	<0.050	<0.050	0.098	<0.050	<0.200	133	270	NA	NA	NA
PH-02 @ 12' (40.269576 / -104.797125)	02/21/19	12	<b>1.30</b>	<0.050	1.20	16.0	<0.200	<b>584</b>	<50.0	NA	NA	NA
MW-01 @ 2.5-5' (40.269582 / -104.797111)	04/05/19	2.5-5	<0.050	<0.050	0.210	3.80	<0.200	15.0	57.6	NA	NA	NA
MW-02 @ 2.5-5' (40.269667 / -104.797065)	04/05/19	2.5-5	<0.050	<0.050	<0.050	<0.050	<0.200	<5.00	<50.0	NA	NA	NA
MW-03 @ 5-7.5' (40.269580 / -104.796995)	04/05/19	5-7.5	<0.050	<0.050	<0.050	0.643	<0.200	74.6	114	NA	NA	NA
MW-04 @ 5-7.5' (40.269496 / -104.797073)	04/05/19	5-7.5	<b>0.612</b>	<0.050	0.466	<0.050	<0.200	<b>131</b>	<b>497</b>	NA	NA	NA
MW-05 @ 0-2.5' (40.269534 / -104.797222)	04/05/19	0-2.5	<0.050	<0.050	<0.050	<0.050	<0.200	25.0	<50.0	NA	NA	NA
MW-06 @ 2.5-5' (40.269640 / -104.797210)	04/05/19	2.5-5	<0.050	<0.050	<0.050	<0.050	<0.200	<5.00	<50.0	NA	NA	NA
MW-07 @ 0-2.5' (40.267725 / -104.797232)	01/28/20	0-2.5	<0.002	<0.002	<0.002	<0.002	<0.008	<0.200	<50.0	NA	NA	NA
MW-08 @ 0-2.5' (40.269726 / -104.796981)	01/28/20	0-2.5	<0.002	<0.002	<0.002	<0.002	<0.008	<0.200	<50.0	NA	NA	NA
MW-09 @ 2.5-5' (40.269643 / -104.796927)	01/28/20	2.5-5	<0.002	<0.002	<0.002	<0.002	<0.008	<0.200	<50.0	NA	NA	NA
MW-10 @ 0-2.5' (40.269535 / -104.796859)	01/28/20	0-2.5	<0.002	<0.002	<0.002	<0.002	<0.008	<0.200	<50.0	NA	NA	NA
MW-11 @ 2.5-5' (40.269466 / -104.796932)	01/28/20	2.5-5	<0.002	<0.002	<0.002	<0.002	<0.008	<0.200	<50.0	NA	NA	NA
MW-12 @ 2.5-5' (40.269383 / -104.797047)	01/28/20	2.5-5	<0.002	<0.002	<0.002	<0.002	<0.008	<0.200	<50.0	NA	NA	NA
MW-13 @ 0-2.5' (40.269415 / -104.797204)	01/28/20	0-2.5	<0.002	<0.002	<0.002	<0.002	<0.008	<0.200	<50.0	NA	NA	NA
MW-14 @ 2.5-5' (40.269640 / -104.797361)	02/27/20	2.5-5	<0.050	<0.050	<0.050	<0.050	<0.200	<5.00	<50.0	NA	NA	NA

TABLE 1  
SOIL ANALYTICAL RESULTS SUMMARY  
AGRICULTURAL PRODUCTS FEDERAL #32-17  
HISTORICAL RELEASE  
40.269576 / -104.797120  
SW¼ NE¼ SEC.32 T4N R66W 6PM  
WELD COUNTY, COLORADO  
REMEDIAL # 12471

Sample Location (Latitude/Longitude)	Date	Approximate Depth (feet)	Benzene (mg/kg)	Toluene (mg/kg)	Ethylbenzene (mg/kg)	Total Xylenes (mg/kg)	Naphthalene (mg/kg)	TPH-GRO (mg/kg)	TPH-DRO (mg/kg)	Specific Conductance (mmhos/cm)	pH (pH units)	SAR
<b>COGCC Table 910-1 Regulatory Limits (mg/kg)</b>			<b>0.17</b>	<b>85</b>	<b>100</b>	<b>175</b>	<b>23</b>	<b>500</b>		<b>&lt;4</b>	<b>6 to 9</b>	<b>&lt;12</b>
EXC-PH-01 @ 5' (40.269494 / -104.797068)	06/20/19	5	<0.002	<0.002	<0.002	<0.002	<0.008	<0.200	58.9	NA	NA	NA
EXC-PH-01 @ 7' (40.269494 / -104.797068)	06/20/19	7	0.119	<0.050	0.132	<0.050	<0.200	31.3	334	NA	NA	NA
EXC-PH-02 @ 5' (40.269647 / -104.797066)	06/20/19	5	<0.002	<0.002	<0.002	<0.002	<0.008	<0.200	<50.0	NA	NA	NA
EXC-PH-02 @ 7' (40.269647 / -104.797066)	06/20/19	7	<0.002	<0.002	<0.002	<0.002	<0.008	<0.200	<50.0	NA	NA	NA
EXC-PH-03 @ 5' (40.269625 / -104.797188)	06/20/19	5	<0.002	<0.002	<0.002	<0.002	<0.008	<0.200	<50.0	NA	NA	NA
EXC-PH-03 @ 7' (40.269625 / -104.797188)	06/20/19	7	<0.002	<0.002	<0.002	<0.002	<0.008	<0.200	<50.0	NA	NA	NA
EXC-PH-04 @ 5' (40.269540 / -104.797201)	06/20/19	5	<0.050	<0.050	<0.050	<0.050	<0.200	<5.00	<50.0	NA	NA	NA
EXC-PH-04 @ 7' (40.269540 / -104.797201)	06/20/19	7	<0.050	<0.050	<0.050	<0.050	<0.200	<5.00	<50.0	NA	NA	NA
EXC-PH-05 @ 7' (40.269581 / -104.797105)	06/20/19	7	<0.050	<0.050	<0.050	<0.050	<0.200	5.67	73.9	NA	NA	NA
EXC-SS-01 @ 7' (40.269512 / -104.797056)	06/24/19	7	<0.050	<0.050	<0.050	<0.050	<0.200	<5.00	<50.0	NA	NA	NA
EXC-SS-02 @ 7' (40.269613 / -104.797060)	06/24/19	7	<0.050	<0.050	<0.050	<0.050	<0.200	<5.00	<50.0	NA	NA	NA
EXC-SS-03 @ 7' (40.269482 / -104.797085)	06/24/19	7	<0.050	<0.050	<0.050	<0.050	<0.200	<5.00	<50.0	NA	NA	NA
EXC-SS-04 @ 7' (40.269502 / -104.797181)	06/24/19	7	<0.050	<0.050	<0.050	<0.050	<0.200	<5.00	<50.0	NA	NA	NA
EXC-SS-05 @ 7' (40.269545 / -104.797205)	06/24/19	7	<0.050	<0.050	<0.050	<0.050	<0.200	<5.00	<50.0	NA	NA	NA
EXC-SS-06 @ 7' (40.269612 / -104.797199)	06/24/19	7	<0.050	<0.050	<0.050	<0.050	<0.200	<5.00	<50.0	NA	NA	NA

TABLE 1  
SOIL ANALYTICAL RESULTS SUMMARY  
AGRICULTURAL PRODUCTS FEDERAL #32-17  
HISTORICAL RELEASE  
40.269576 / -104.797120  
SW¼ NE¼ SEC.32 T4N R66W 6PM  
WELD COUNTY, COLORADO  
REMEDATION # 12471

Sample Location (Latitude/Longitude)	Date	Approximate Depth (feet)	Benzene (mg/kg)	Toluene (mg/kg)	Ethylbenzene (mg/kg)	Total Xylenes (mg/kg)	Naphthalene (mg/kg)	TPH-GRO (mg/kg)	TPH-DRO (mg/kg)	Specific Conductance (mmhos/cm)	pH (pH units)	SAR
<b>COGCC Table 910-1 Regulatory Limits (mg/kg)</b>			<b>0.17</b>	<b>85</b>	<b>100</b>	<b>175</b>	<b>23</b>	<b>500</b>		<b>&lt;4</b>	<b>6 to 9</b>	<b>&lt;12</b>
EXC-SS-07 @ 7' (40.269647 / -104.797156)	06/24/19	7	<0.050	<0.050	<0.050	<0.050	<0.200	<5.00	<50.0	NA	NA	NA
EXC-SS-08 @ 7' (40.269643 / -104.797098)	06/24/19	7	<0.050	<0.050	<0.050	<0.050	<0.200	<5.00	<50.0	NA	NA	NA
COGCC = Colorado Oil and Gas Conservation Commission mg/kg = milligrams per kilogram mmhos/cm = millimhos per centimeter NA = Not Analyzed TPH-GRO = Total Petroleum Hydrocarbons - Gasoline Range Organics TPH-DRO = Total Petroleum Hydrocarbons - Diesel Range Organics SAR = Sodium Adsorption Ratio Note: Values presented with a less than symbol (<) did not contain concentrations at or above the laboratory reporting limit. Note: Values presented in <b>BOLD</b> contained concentrations exceeding COGCC Table 910-1 Regulatory Limits												



**TABLE 2**  
**GROUNDWATER ANALYTICAL RESULTS SUMMARY**  
**AGRICULTURAL PRODUCTS FEDERAL #32-17**  
**HISTORICAL RELEASE**  
**40.269576 / -104.797120**  
**SW¼ NE¼ SEC.32 T4N R66W 6PM**  
**WELD COUNTY, COLORADO**  
**REMEDATION # 12471**

Sample Location (Latitude/Longitude)	Date	Benzene (µg/L)	Toluene (µg/L)	Ethylbenzene (µg/L)	Total Xylenes (µg/L)
<b>COGCC Table 910-1 Regulatory Limits (µg/L)</b>		<b>5</b>	<b>560</b>	<b>700</b>	<b>1400</b>
GW-01 (40.269576 / -104.797125)	02/21/19	<b>8250</b>	<4.00	<b>898</b>	<b>8890</b>
MW-01 (40.269582 / -104.797111)	04/09/19	<b>255</b>	<1.00	99.3	1390
	06/24/19	DES			
MW-01R (40.269582 / -104.797111)	11/13/19	<b>1340</b>	<4.00	564	319
	02/12/20	<b>504</b>	<50.0	114	<b>2650</b>
MW-02 (40.269667 / -104.797065)	04/09/19	<b>475</b>	<1.00	116	482
	06/24/19	DES			
MW-02R (40.269667 / -104.797065)	11/13/19	<b>46.8</b>	<4.00	4.60	24.8
	02/12/20	<b>19.6</b>	<4.00	<4.00	<4.00
MW-03 (40.269580 / -104.796995)	04/09/19	<b>438</b>	<1.00	175	<b>2740</b>
	06/24/19	DES			
MW-03R (40.269580 / -104.796995)	11/13/19	<b>19.0</b>	<4.00	<4.00	627
	02/12/20	<b>254</b>	<4.00	197	1080
MW-04 (40.269496 / -104.797073)	04/09/19	<b>1990</b>	<1.00	480	<b>2720</b>
	06/24/19	DES			
MW-04R (40.269496 / -104.797073)	11/13/19	<b>22.2</b>	<4.00	<4.00	961
	02/12/20	<b>31.6</b>	<4.00	286	1210
MW-05 (40.269534 / -104.797222)	04/09/19	<4.00	<4.00	76.6	583
	06/24/19	DES			
MW-05R (40.269534 / -104.797222)	11/13/19	<4.00	<4.00	<4.00	381
	02/12/20	<4.00	<4.00	<4.00	14.5
MW-06 (40.269640 / -104.797210)	04/09/19	<1.00	<1.00	69.9	<b>1650</b>
	06/24/19	DES			
MW-06R (40.269640 / -104.797210)	11/13/19	DES			
MW-06R2 (40.269640 / -104.797210)	02/12/20	2.05	<1.00	116	<b>1950</b>
MW-07 (40.267725 / -104.797232)	02/12/20	<1.00	<1.00	<1.00	<1.00
MW-08 (40.269726 / -104.796981)	02/12/20	<1.00	<1.00	<1.00	<1.00

TABLE 2  
GROUNDWATER ANALYTICAL RESULTS SUMMARY  
AGRICULTURAL PRODUCTS FEDERAL #32-17  
HISTORICAL RELEASE  
40.269576 / -104.797120  
SW¼ NE¼ SEC.32 T4N R66W 6PM  
WELD COUNTY, COLORADO  
REMEDATION # 12471

Sample Location (Latitude/Longitude)	Date	Benzene (µg/L)	Toluene (µg/L)	Ethylbenzene (µg/L)	Total Xylenes (µg/L)
<b>COGCC Table 910-1 Regulatory Limits (µg/L)</b>		<b>5</b>	<b>560</b>	<b>700</b>	<b>1400</b>
MW-09 (40.269643 / -104.796927)	02/12/20	<1.00	<1.00	16.4	119
MW-10 (40.269535 / -104.796859)	02/12/20	<1.00	<1.00	<1.00	3.53
MW-11 (40.269466 / -104.796932)	02/12/20	<1.00	<1.00	<1.00	<1.00
MW-12 (40.269383 / -104.797047)	02/12/20	<1.00	<1.00	<1.00	<1.00
MW-13 (40.269415 / -104.797204)	02/12/20	<1.00	<1.00	<1.00	<1.00
MW-14 (40.269640 / -104.797361)	03/04/20	<1.00	<1.00	6.99	13.6
COGCC = Colorado Oil and Gas Conservation Commission µg/L - micrograms per liter Note: Values presented with a less than symbol (<) indicate concentrations were not observed at or above the laboratory reporting limit. Values presented in <b>bold</b> typeface exceed their respective COGCC - Regulatory Limits (Table 910-1). DES - Destroyed					

**TABLE 3**  
**GROUNDWATER ELEVATION SUMMARY**  
**AGRICULTURAL PRODUCTS FEDERAL #32-17**  
**HISTORICAL RELEASE**  
**40.269576 / -104.797120**  
**SW¼ NE¼ SEC.32 T4N R66W 6PM**  
**WELD COUNTY, COLORADO**  
**REMEDATION # 12471**

Sample Location (Latitude/Longitude)	Date	Top of Casing Elevation (feet)	Depth to Groundwater from TOC (feet)	Relative Groundwater Elevation (feet) (TOC)	Depth to Groundwater (feet)(bgs)	Stick Up Height (feet)
MW-01 (40.269582 / -104.797111)	04/09/19	99.54	11.28	88.26	8.79	2.49
	06/24/19	DES				
MW-01R (40.269582 / -104.797111)	11/13/19	99.88	10.73	89.15	7.52	3.21
	02/12/20		12.45	87.43	9.24	
MW-02 (40.269667 / -104.797065)	04/09/19	99.72	11.60	88.12	8.90	2.70
	06/24/19	DES				
MW-02R (40.269667 / -104.797065)	11/13/19	99.71	10.64	89.07	7.39	3.25
	02/12/20		12.30	87.41	9.05	
MW-03 (40.269580 / -104.796995)	04/09/19	98.90	10.61	88.29	8.55	2.06
	06/24/19	DES				
MW-03R (40.269580 / -104.796995)	11/13/19	99.42	10.24	89.18	7.01	3.23
	02/12/20		11.89	87.53	8.66	
MW-04 (40.269496 / -104.797073)	04/09/19	100.00	11.53	88.47	8.90	2.63
	06/24/19	DES				
MW-04R (40.269496 / -104.797073)	11/13/19	99.58	10.29	89.29	7.18	3.11
	02/12/20		11.96	87.62	8.85	
MW-05 (40.269534 / -104.797222)	04/09/19	99.67	11.41	88.26	8.89	2.52
	06/24/19	DES				
MW-05R (40.269534 / -104.797222)	11/13/19	100.00	10.82	89.18	7.57	3.25
	02/12/20		12.52	87.48	9.27	
MW-06 (40.269640 / -104.797210)	04/09/19	99.57	11.44	88.13	8.95	2.49
	06/24/19	DES				
MW-06R (40.269640 / -104.797210)	11/13/19	99.95	DES			
MW-06R2 (40.269640 / -104.797210)	02/12/20	96.60	9.15	87.45	9.15	NA
MW-07 (40.267725 / -104.797232)	02/12/20	95.84	9.56	86.28	9.56	NA
MW-08 (40.269726 / -104.796981)	02/12/20	95.61	8.19	87.42	8.19	NA
MW-09 (40.269643 / -104.796927)	02/12/20	95.82	8.32	87.50	8.32	NA
MW-10 (40.269535 / -104.796859)	02/12/20	95.64	7.98	87.66	7.98	NA
MW-11 (40.269466 / -104.796932)	02/12/20	95.54	7.81	87.73	7.81	NA

TABLE 3  
GROUNDWATER ELEVATION SUMMARY  
AGRICULTURAL PRODUCTS FEDERAL #32-17  
HISTORICAL RELEASE  
40.269576 / -104.797120  
SW¼ NE¼ SEC.32 T4N R66W 6PM  
WELD COUNTY, COLORADO  
REMEDATION # 12471

Sample Location (Latitude/Longitude)	Date	Top of Casing Elevation (feet)	Depth to Groundwater from TOC (feet)	Relative Groundwater Elevation (feet) (TOC)	Depth to Groundwater (feet)(bgs)	Stick Up Height (feet)
MW-12 (40.269383 / -104.797047)	02/12/20	96.09	8.32	87.77	8.32	NA
MW-13 (40.269415 / -104.797204)	02/12/20	95.07	8.35	86.72	8.35	NA
MW-14 (40.269640 / -104.797361)	03/04/20	96.60	9.79	86.81	9.79	NA
COGCC = Colorado Oil and Gas Conservation Commission bgs- below ground surface      NA - not applicable TOC - Top of Casing DES - Destroyed						

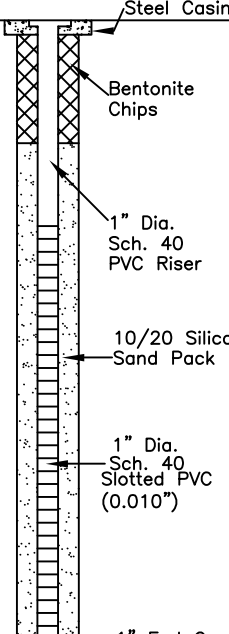


## **ATTACHMENT A**

**Soil Boring Logs / Well Completion Diagrams**  
**New Wells: MW-06R2, and MW-07 through MW-14**

# Boring Log/Well Completion Diagram: MW-06R2

PAGE 1 OF 1

DEPTH (FT)	LITHOLOGY	SAMPLE				OVM/OVA (PPM)	BLOW COUNT (per 0.5 FT)	DEPTH (FT)	WELL CONSTRUCTION DETAIL	COMMENTS
	DESCRIPTION	GRAPHIC LOG	TYPE	NUMBER	RECOVERY %					
0	(0-7') clayey SAND - brown, dry to very moist, medium dense, fine to medium grained, well-graded with ~20% clay, N/O, N/S	SC	DP	1	50	0.0	N/A			wet @ 8'
						0.0				
5	(7-15') sandy CLAY - brown, very moist to wet, medium stiff, moderate plasticity, well-graded with ~20-30% fine grained sand	CL	DP	2	70	1.1	N/A	5		
						32.5				
10	@8-13' - weathered staining, slight HC odor	CL	DP	3	80	220.9	N/A	10		
						9.2				
15	@13' - N/O, N/S							15		
	BoB @ 15'									
20								20		
25								25		
30										

DP - Direct push  
 HC - Hydrocarbon  
 BoB - Bottom of Boring  
 N/O - no odor  
 N/S - no staining  
 TOC - top of casing  
 bgs - below ground surface

START/COMPLETION DATE: 01/28/20

SAND PACK INTERVAL (FEET): 3-15

PROJECT: AGRICULTURAL PRODUCTS FEDERAL #32-17

BENTONITE/GROUT INTERVAL (FEET): 0.5-3

LOGGED BY: G. CONGDON

WELL SCREEN INTERVAL (FEET): 5-15

DRILLING COMPANY/EQUIPMENT: EAGLE/GEOPROBE

WELL DIAMETER (INCHES): 1

BORING DEPTH (FEET): 15

WELL DEPTH (FEET): 15

PID INSTRUMENT: MINIRAE 3000 - PID #13

TIME STARTED/COMPLETED: 0900/0913

SAMPLE COLLECTION DEPTH (FEET)/TIME: N/A

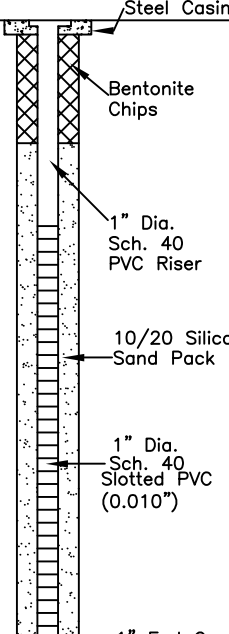


**EAGLE**  
 ENVIRONMENTAL  
 CONSULTING, INC.

8000 West 44th Ave., Wheat Ridge, CO 80033  
 Ph: 303-433-0479 • F: 303-325-5449

# Boring Log/Well Completion Diagram: MW-07

PAGE 1 OF 1

DEPTH (FT)	LITHOLOGY	SAMPLE				OVM/OVA (PPM)	BLOW COUNT (per 0.5 FT)	DEPTH (FT)	WELL CONSTRUCTION DETAIL	COMMENTS
	DESCRIPTION	GRAPHIC LOG	TYPE	NUMBER	RECOVERY %					
0	(0-7') clayey SAND - brown, dry to very moist, medium dense, fine to medium grained, well-graded with ~20% clay, N/O, N/S	SC	DP	1	90	0.3	N/A			wet @ 8'
						0.2				
5	(7-15') sandy CLAY - brown, wet, medium stiff, moderate plasticity, well-graded with ~20-30% fine grained sand, N/O, N/S	DP	2	90	0.1	N/A	N/A			
		CL	DP	3	100	0.3	N/A			
						0.2				
15	BoB @ 15'									
20										
25										
30										

DP - Direct push  
 HC - Hydrocarbon  
 BoB - Bottom of Boring  
 N/O - no odor  
 N/S - no staining  
 TOC - top of casing  
 bgs - below ground surface

START/COMPLETION DATE: 01/28/20

SAND PACK INTERVAL (FEET): 3-15

PROJECT: AGRICULTURAL PRODUCTS FEDERAL #32-17

BENTONITE/GROUT INTERVAL (FEET): 0.5-3

LOGGED BY: G. CONGDON

WELL SCREEN INTERVAL (FEET): 5-15

DRILLING COMPANY/EQUIPMENT: EAGLE/GEOPROBE

WELL DIAMETER (INCHES): 1

BORING DEPTH (FEET): 15

WELL DEPTH (FEET): 15

PID INSTRUMENT: MINIRAE 3000 - PID #13

TIME STARTED/COMPLETED: 1113/1125

SAMPLE COLLECTION DEPTH (FEET)/TIME: 0-2.5 / 1114

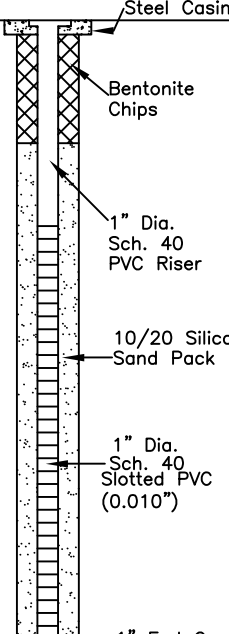


**EAGLE**  
 ENVIRONMENTAL  
 CONSULTING, INC.

8000 West 44th Ave., Wheat Ridge, CO 80033  
 Ph: 303-433-0479 • F: 303-325-5449

# Boring Log/Well Completion Diagram: MW-08

PAGE 1 OF 1

DEPTH (FT)	LITHOLOGY	SAMPLE				OVM/OVA (PPM)	BLOW COUNT (per 0.5 FT)	DEPTH (FT)	WELL CONSTRUCTION DETAIL	COMMENTS
	DESCRIPTION	GRAPHIC LOG	TYPE	NUMBER	RECOVERY %					
0	(0-7') clayey SAND - brown, dry to very moist, medium dense, fine to medium grained, well-graded with ~20% clay, N/O, N/S	SC	DP	1	70	0.9	N/A			wet @ 8'
						0.7				
5		CL	DP	2	80	0.3	N/A			
	(7-15') sandy CLAY - brown, wet, medium stiff, moderate plasticity, well-graded with ~20-30% fine grained sand, N/O, N/S					0.5				
10		CL	DP	3	80	0.4	N/A			
						0.3				
15	BoB @ 15'								1" End Cap	
20										
25										
30										

DP - Direct push  
 HC - Hydrocarbon  
 BoB - Bottom of Boring  
 N/O - no odor  
 N/S - no staining  
 TOC - top of casing  
 bgs - below ground surface

START/COMPLETION DATE: 01/28/20

SAND PACK INTERVAL (FEET): 3-15

PROJECT: AGRICULTURAL PRODUCTS FEDERAL #32-17

BENTONITE/GROUT INTERVAL (FEET): 0.5-3

LOGGED BY: G. CONGDON

WELL SCREEN INTERVAL (FEET): 5-15

DRILLING COMPANY/EQUIPMENT: EAGLE/GEOPROBE

WELL DIAMETER (INCHES): 1

BORING DEPTH (FEET): 15

WELL DEPTH (FEET): 15

PID INSTRUMENT: MINIRAE 3000 - PID #13

TIME STARTED/COMPLETED: 1057/1110

SAMPLE COLLECTION DEPTH (FEET)/TIME: 0-2.5 / 1058



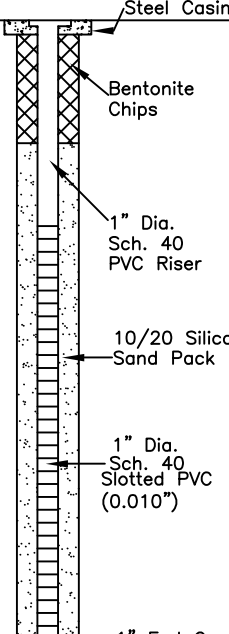
**EAGLE**  
 ENVIRONMENTAL  
 CONSULTING, INC.

8000 West 44th Ave., Wheat Ridge, CO 80033  
 Ph: 303-433-0479 • F: 303-325-5449



# Boring Log/Well Completion Diagram: MW-09

PAGE 1 OF 1

DEPTH (FT)	LITHOLOGY	SAMPLE				OVM/OVA (PPM)	BLOW COUNT (per 0.5 FT)	DEPTH (FT)	WELL CONSTRUCTION DETAIL	COMMENTS
	DESCRIPTION	GRAPHIC LOG	TYPE	NUMBER	RECOVERY %					
0	(0-7') clayey SAND - brown, dry to wet, medium dense, fine to medium grained, well-graded with ~20% clay, N/O, N/S	SC	DP	1	60	18.7	N/A			wet @ 7'
						32.9				
5	(7-15') sandy CLAY - brown, wet, medium stiff, moderate plasticity, well-graded with ~20-30% fine grained sand, N/O, N/S	DP	2	80	80	31.0	N/A	5		
						41.4				
10		CL	DP	3	100	9.2	N/A	10		
						0.5				
15	BoB @ 15'							15		
20								20		
25								25		
30								30		

DP - Direct push  
HC - Hydrocarbon  
BoB - Bottom of Boring  
N/O - no odor  
N/S - no staining  
TOC - top of casing  
bgs - below ground surface

START/COMPLETION DATE: 01/28/20

SAND PACK INTERVAL (FEET): 3-15

PROJECT: AGRICULTURAL PRODUCTS FEDERAL #32-17

BENTONITE/GROUT INTERVAL (FEET): 0.5-3

LOGGED BY: G. CONGDON

WELL SCREEN INTERVAL (FEET): 5-15

DRILLING COMPANY/EQUIPMENT: EAGLE/GEOPROBE

WELL DIAMETER (INCHES): 1

BORING DEPTH (FEET): 15

WELL DEPTH (FEET): 15

PID INSTRUMENT: MINIRAE 3000 - PID #13

TIME STARTED/COMPLETED: 1038/1052

SAMPLE COLLECTION DEPTH (FEET)/TIME: 2.5-5 / 1040

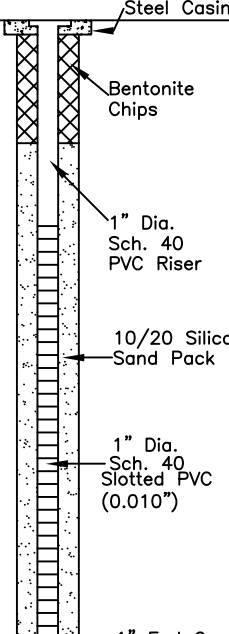


**EAGLE**  
ENVIRONMENTAL  
CONSULTING, INC.

8000 West 44th Ave., Wheat Ridge, CO 80033  
Ph: 303-433-0479 • F: 303-325-5449

# Boring Log/Well Completion Diagram: MW-10

PAGE 1 OF 1

DEPTH (FT)	LITHOLOGY	SAMPLE				OVM/OVA (PPM)	BLOW COUNT (per 0.5 FT)	DEPTH (FT)	WELL CONSTRUCTION DETAIL	COMMENTS
	DESCRIPTION	GRAPHIC LOG	TYPE	NUMBER	RECOVERY %					
0	(0-7') clayey SAND - brown, dry to wet, medium dense, fine to medium grained, well-graded with ~20% clay, N/O, N/S	SC	DP	1	90	4.1	N/A			wet @ 7'
						1.8				
5	(7-11') sandy CLAY - brown, wet, medium stiff, moderate plasticity, well-graded with ~20-30% fine grained sand	CL	DP	2	80	2.2	N/A			
						104.0				
10	@10' - black staining, HC odor	SC	DP	3	80	311.1	N/A			
	(11-15') clayey SAND - brown, dry to wet, medium dense, fine to medium grained, well-graded with ~20% clay, N/O, N/S					5.2				
15	BoB @ 15'									
20										
25										
30										

DP - Direct push  
HC - Hydrocarbon  
BoB - Bottom of Boring  
N/O - no odor  
N/S - no staining  
TOC - top of casing  
bgs - below ground surface

START/COMPLETION DATE: 01/28/20

SAND PACK INTERVAL (FEET): 3-15

PROJECT: AGRICULTURAL PRODUCTS FEDERAL #32-17

BENTONITE/GROUT INTERVAL (FEET): 0.5-3

LOGGED BY: G. CONGDON

WELL SCREEN INTERVAL (FEET): 5-15

DRILLING COMPANY/EQUIPMENT: EAGLE/GEOPROBE

WELL DIAMETER (INCHES): 1

BORING DEPTH (FEET): 15

WELL DEPTH (FEET): 15

PID INSTRUMENT: MINIRAE 3000 - PID #13

TIME STARTED/COMPLETED: 1022/1034

SAMPLE COLLECTION DEPTH (FEET)/TIME: 0-2.5 / 1023

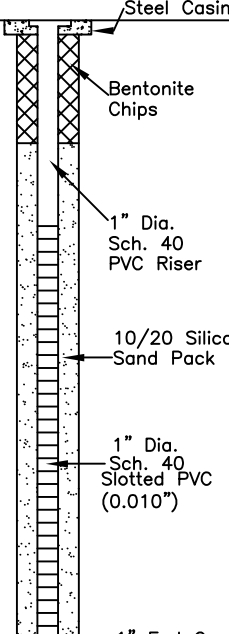


**EAGLE**  
ENVIRONMENTAL  
CONSULTING, INC.

8000 West 44th Ave., Wheat Ridge, CO 80033  
Ph: 303-433-0479 • F: 303-325-5449

# Boring Log/Well Completion Diagram: MW-11

PAGE 1 OF 1

DEPTH (FT)	LITHOLOGY	SAMPLE				OVM/OVA (PPM)	BLOW COUNT (per 0.5 FT)	DEPTH (FT)	WELL CONSTRUCTION DETAIL	COMMENTS
	DESCRIPTION	GRAPHIC LOG	TYPE	NUMBER	RECOVERY %					
0	(0-7') clayey SAND - brown, dry to wet, medium dense, fine to medium grained, well-graded with ~20% clay, N/O, N/S	SC	DP	1	90	0.0	N/A			wet @ 7'
						0.1				
5	(7-15') sandy CLAY - brown, wet, medium stiff, moderate plasticity, well-graded with ~20-30% fine grained sand	DP	2	80	50.7	0.1	N/A	5		
10	@9-10' - gray staining, slight HC odor @10' - N/O, N/S	CL	DP	3	80	68.6	N/A	10		
						9.2				
15	BoB @ 15'							15		
20								20		
25								25		
30								30		

DP - Direct push  
HC - Hydrocarbon  
BoB - Bottom of Boring  
N/O - no odor  
N/S - no staining  
TOC - top of casing  
bgs - below ground surface

START/COMPLETION DATE: 01/28/20

SAND PACK INTERVAL (FEET): 3-15

PROJECT: AGRICULTURAL PRODUCTS FEDERAL #32-17

BENTONITE/GROUT INTERVAL (FEET): 0.5-3

LOGGED BY: G. CONGDON

WELL SCREEN INTERVAL (FEET): 5-15

DRILLING COMPANY/EQUIPMENT: EAGLE/GEOPROBE

WELL DIAMETER (INCHES): 1

BORING DEPTH (FEET): 15

WELL DEPTH (FEET): 15

PID INSTRUMENT: MINIRAE 3000 - PID #13

TIME STARTED/COMPLETED: 1004/1019

SAMPLE COLLECTION DEPTH (FEET)/TIME: 2.5-5 / 1007

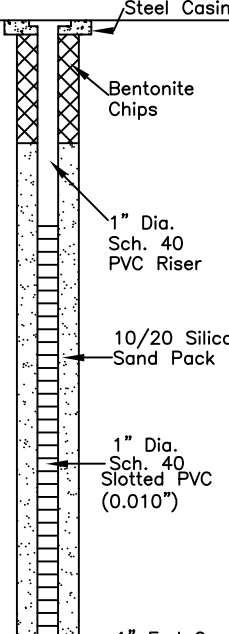


**EAGLE**  
ENVIRONMENTAL  
CONSULTING, INC.


8000 West 44th Ave., Wheat Ridge, CO 80033  
Ph: 303-433-0479 • F: 303-325-5449

# Boring Log/Well Completion Diagram: MW-12

PAGE 1 OF 1

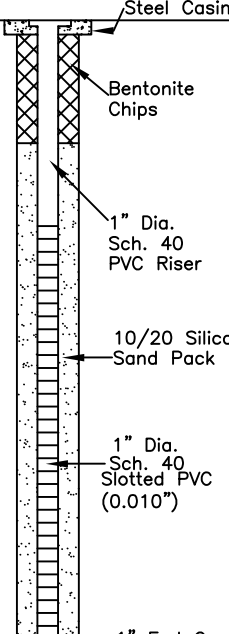
DEPTH (FT)	LITHOLOGY	SAMPLE				OVM/OVA (PPM)	BLOW COUNT (per 0.5 FT)	DEPTH (FT)	WELL CONSTRUCTION DETAIL	COMMENTS
	DESCRIPTION	GRAPHIC LOG	TYPE	NUMBER	RECOVERY %					
0	(0-7') clayey SAND - brown, dry to very moist, medium dense, fine to medium grained, well-graded with ~20% clay, N/O, N/S	SC	DP	1	80	0.2	N/A			wet @ 8'
						0.3				
5		CL	DP	2	80	0.1	N/A			
	(7-15') sandy CLAY - brown, very moist to wet, medium stiff, moderate plasticity, well-graded with ~20-30% fine grained sand, N/O, N/S					0.0				
10		CL	DP	3	80	0.4	N/A			
						0.0				
15	BoB @ 15'								1" End Cap	DP - Direct push HC - Hydrocarbon BoB - Bottom of Boring N/O - no odor N/S - no staining TOC - top of casing bgs - below ground surface
20										
25										
30										

30

START/COMPLETION DATE: 01/28/20		SAND PACK INTERVAL (FEET): 3–15	
PROJECT: AGRICULTURAL PRODUCTS FEDERAL #32–17		BENTONITE/GROUT INTERVAL (FEET): 0.5–3	
LOGGED BY: G. CONGDON		WELL SCREEN INTERVAL (FEET): 5–15	
DRILLING COMPANY/EQUIPMENT: EAGLE/GEOPROBE		WELL DIAMETER (INCHES): 1	
BORING DEPTH (FEET): 15	WELL DEPTH (FEET): 15	 <div><b>EAGLE</b> ENVIRONMENTAL CONSULTING, INC.  8000 West 44th Ave., Wheat Ridge, CO 80033 Ph: 303-433-0479 • F: 303-325-5449</div>	
PID INSTRUMENT: MINIRAE 3000 – PID #13			
TIME STARTED/COMPLETED: 0944/0959			
SAMPLE COLLECTION DEPTH (FEET)/TIME: 2.5–5 / 0948			

# Boring Log/Well Completion Diagram: MW-13

PAGE 1 OF 1

DEPTH (FT)	LITHOLOGY	SAMPLE				OVM/OVA (PPM)	BLOW COUNT (per 0.5 FT)	DEPTH (FT)	WELL CONSTRUCTION DETAIL	COMMENTS
	DESCRIPTION	GRAPHIC LOG	TYPE	NUMBER	RECOVERY %					
0	(0-7') clayey SAND - brown, dry to very moist, medium dense, fine to medium grained, well-graded with ~20% clay, N/O, N/S	SC	DP	1	70	7.1	N/A			wet @ 8'
						0.0				
5	(7-15') sandy CLAY - brown, very moist to wet, medium stiff, moderate plasticity, well-graded with ~20-30% fine grained sand, N/O, N/S	CL	DP	2	60	5.1	N/A	5		
						0.3				
10		CL	DP	3	80	13.1	N/A	10		
						1.5				
15	BoB @ 15'							15		
20								20		
25								25		
30										

DP - Direct push  
 HC - Hydrocarbon  
 BoB - Bottom of Boring  
 N/O - no odor  
 N/S - no staining  
 TOC - top of casing  
 bgs - below ground surface

START/COMPLETION DATE: 01/28/20

SAND PACK INTERVAL (FEET): 3-15

PROJECT: AGRICULTURAL PRODUCTS FEDERAL #32-17

BENTONITE/GROUT INTERVAL (FEET): 0.5-3

LOGGED BY: G. CONGDON

WELL SCREEN INTERVAL (FEET): 5-15

DRILLING COMPANY/EQUIPMENT: EAGLE/GEOPROBE

WELL DIAMETER (INCHES): 1

BORING DEPTH (FEET): 15

WELL DEPTH (FEET): 15

PID INSTRUMENT: MINIRAE 3000 - PID #13

TIME STARTED/COMPLETED: 0924/0937

SAMPLE COLLECTION DEPTH (FEET)/TIME: 0-2.5 / 0925

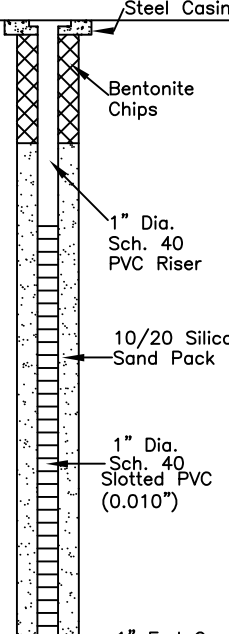


**EAGLE**  
 ENVIRONMENTAL  
 CONSULTING, INC.

8000 West 44th Ave., Wheat Ridge, CO 80033  
 Ph: 303-433-0479 • F: 303-325-5449

# Boring Log/Well Completion Diagram: MW-14

PAGE 1 OF 1

DEPTH (FT)	LITHOLOGY	SAMPLE				OVM/OVA (PPM)	BLOW COUNT (per 0.5 FT)	DEPTH (FT)	WELL CONSTRUCTION DETAIL	COMMENTS
	DESCRIPTION	GRAPHIC LOG	TYPE	NUMBER	RECOVERY %					
0	(0-7') clayey SAND - brown, dry to wet, medium dense, fine to medium grained, well-graded with ~20% clay, N/O, N/S	SC	DP	1	50	5.5	N/A			wet @ 8'
						11.0				
5	(7-15') sandy CLAY - brown, wet, medium stiff, moderate plasticity, well-graded with ~20-30% fine grained sand	CL	DP	2	70	9.1	N/A	5		
						10.2				
10	@9.5-13' - slight odor, gray HC staining	CL	DP	3	80	88.3	N/A	10		
	@13' - N/O, N/S					15.5				
15	BoB @ 15'							15		
20								20		
25								25		
30								30		

DP - Direct push  
 HC - Hydrocarbon  
 BoB - Bottom of Boring  
 N/O - no odor  
 N/S - no staining  
 TOC - top of casing  
 bgs - below ground surface

START/COMPLETION DATE: 02/27/20

SAND PACK INTERVAL (FEET): 3-15

PROJECT: AGRICULTURAL PRODUCTS FEDERAL #32-17

BENTONITE/GROUT INTERVAL (FEET): 0.5-3

LOGGED BY: K. PETERSON

WELL SCREEN INTERVAL (FEET): 5-15

DRILLING COMPANY/EQUIPMENT: EAGLE/GEOPROBE

WELL DIAMETER (INCHES): 1

BORING DEPTH (FEET): 15

WELL DEPTH (FEET): 15

PID INSTRUMENT: MINIRAE 3000 - PID #6

TIME STARTED/COMPLETED: 1145 / 1200

SAMPLE COLLECTION DEPTH (FEET)/TIME: 2.5-5 / 1151



**EAGLE**  
 ENVIRONMENTAL  
 CONSULTING, INC.

8000 West 44th Ave., Wheat Ridge, CO 80033  
 Ph: 303-433-0479 • F: 303-325-5449



## **ATTACHMENT B**

### **Laboratory Analytical Reports**



February 03, 2020

Eagle Environmental Consulting, Inc.

Martin C Eckert III

8000 W 44th Ave

Wheat Ridge CO 80033

**Project Name - Noble - Agricultural Products  
Federal #32-17**

**Project Number - [none]**

Attached are your analytical results for Noble - Agricultural Products Federal #32-17 received by Origins Laboratory, Inc. January 28, 2020. This project is associated with Origins project number Y001422-01.

The analytical results in the following report were analyzed under the guidelines of EPA Methods. These methods are identified as follows; "SW" are defined in SW-846, "EPA" are defined in 40CFR part 136 and "SM" are defined in the most current revision of Standard Methods For the Examination of Water and Wastewater.

The analytical results apply specifically to the samples and analyses specified per the attached Chain of Custody. As such, this report shall not be reproduced except in full, without the written approval of Origin's laboratory.

Unless otherwise noted, the analytical results for all soil samples are reported on a wet weight basis. All analytical analyses were performed under NELAP guidelines unless noted by a data qualifier.

Any holding time exceedances, deviations from the method specifications or deviations from Origins Laboratory's Standard Operating Procedures are outlined in the case narrative.

Thank you for selecting Origins for your analytical needs. Please contact us with any questions concerning this report, or if we can help with anything at all.

Origins Laboratory, Inc.  
303.433.1322  
o-squad@oelabinc.com



1725 Elk Place, Denver, CO 80211 | Phone: 303.433.1322 | Fax: 303.265.9645



Eagle Environmental Consulting, Inc.

8000 W 44th Ave

Wheat Ridge CO 80033

Martin C Eckert III

Project Number: [none]

Project: Noble - Agricultural Products Federal  
#32-17

## CROSS REFERENCE REPORT

Sample ID	Laboratory ID	Matrix	Date Sampled	Date Received
MW-07@0-2.5'	Y001422-01	Soil	January 28, 2020 11:14	01/28/2020 14:55
MW-08@0-2.5'	Y001422-02	Soil	January 28, 2020 10:58	01/28/2020 14:55
MW-09@2.5-5'	Y001422-03	Soil	January 28, 2020 10:40	01/28/2020 14:55
MW-10@0-2.5'	Y001422-04	Soil	January 28, 2020 10:23	01/28/2020 14:55
MW-11@2.5-5'	Y001422-05	Soil	January 28, 2020 10:07	01/28/2020 14:55
MW-12@2.5-5'	Y001422-06	Soil	January 28, 2020 9:48	01/28/2020 14:55
MW-13@0-2.5'	Y001422-07	Soil	January 28, 2020 9:25	01/28/2020 14:55

Origins Laboratory, Inc.



*The results in this report apply to the samples analyzed in  
accordance with the chain of custody document. This  
analytical report must be reproduced in its entirety.*

Martin C Eckert III  
Project Number: [none]  
Project: Noble - Agricultural Products Federal  
#32-17

# ORIGINS

**LABORATORY, INC**

www.originslaboratory.com

page 1 of 1

---

Client: Engle Envt. Consulting

Address: 8000 W 44th Ave

Wheat Ridge, CO 80033

Telephone Number: 303-433-0479

Email Address: mcc@engle-enviro.com

Project Manager: Nathan Eckst III

Project Name: Agricultural Products Federal #3217

Project Number: GEC

Samples Collected By: GEC

---

Sample ID Description	Date Sampled	Time Sampled	# of Containers	Preservative				Matrix			Analysis				Sample Instructions
				HCl	HNO <sub>3</sub>	Other	Groundwater	Soil	Air Summa #	Other	BTEX	GRD	DRD	Naphthalene	
MW-07 @ 0-2.5'	1/28/20	11:14	2	X				X				X			1
MW-08 @ 0-2.5'		<del>11:14</del> 10:53	1									X			2
MW-09 @ 2.5-5'		10:40													3
MW-10 @ 0-2.5'		10:23													4
MW-11 @ 2.5-5'		10:07													5
MW-12 @ 2.5-5'		09:48													6
MW-13 @ 0-2.5'		09:25		X					X			X			7
															8
															9
															10

Relinquished By: [Signature]

Relinquished By: [Signature]

Date: 1/28/20 Time: 1455

Date: 1/28/20 Time: 1455

Turnaround Time: 24 Hr ☐

Same Day ☐ 48 Hr ☐ 72 Hr ☐

Standard ☒

Date Results Needed: 2.1

Temp Received: 2.1

Bill to: Jacob

Origins Laboratory, Inc.

Jeff Pellgrini

*The results in this report apply to the samples analyzed in accordance with the chain of custody document. This analytical report must be reproduced in its entirety.*

Eagle Environmental Consulting, Inc.

8000 W 44th Ave

Wheat Ridge CO 80033

Martin C Eckert III

Project Number: [none]

Project: Noble - Agricultural Products Federal #32-17

Origins Laboratory

F-012207-01-R1  
Effective Date: 01/09/12

## Sample Receipt Checklist

Origins Work Order: Y001422

Client: Eagle

Client Project ID: Agricultural Products Fed

Checklist Completed by: JG

Shipped Via: HD

(UPS, FedEx, Hand Delivered, Pick-up, etc.)

Date/time completed: 1/29/2020

Airbill #: N/A

Matrix(s) Received: (Check all that apply): ☒ Soil/Solid ☐ Water ☐ Other: \_\_\_\_\_

Cooler Number/Temperature: 1 / 2.1 °C \_\_\_\_\_ °C \_\_\_\_\_ °C (Describe) \_\_\_\_\_ °C

Thermometer ID: T003

Requirement Description	Yes	No	N/A	Comments (if any)
If samples require cooling, was the temperature between 0°C to ≤ 6°C <sup>(1)</sup> ?	<input checked="" type="checkbox"/>	<input type="checkbox"/>	<input type="checkbox"/>	
Is there ice present (document if blue ice is used)?	<input checked="" type="checkbox"/>	<input type="checkbox"/>	<input type="checkbox"/>	
Are custody seals present on cooler? (if so, document in comments if they are signed and dated, broken or intact)	<input checked="" type="checkbox"/>	<input type="checkbox"/>	<input type="checkbox"/>	
Are custody seals present on each sample container? (if so, document in comments if they are signed and dated, broken or intact)	<input checked="" type="checkbox"/>	<input type="checkbox"/>	<input type="checkbox"/>	
Were all samples received intact <sup>(1)</sup> ?	<input checked="" type="checkbox"/>	<input type="checkbox"/>	<input type="checkbox"/>	
Was adequate sample volume provided <sup>(1)</sup> ?	<input checked="" type="checkbox"/>	<input type="checkbox"/>	<input type="checkbox"/>	
Are short holding time analytes or samples with HTs due within 48 hours present <sup>(1)</sup> ?	<input checked="" type="checkbox"/>	<input type="checkbox"/>	<input type="checkbox"/>	
Is a chain-of-custody (COC) present and filled out completely <sup>(1)</sup> ?	<input checked="" type="checkbox"/>	<input type="checkbox"/>	<input type="checkbox"/>	
Does the COC agree with the number and type of sample bottles received <sup>(1)</sup> ?	<input checked="" type="checkbox"/>	<input type="checkbox"/>	<input type="checkbox"/>	
Do the sample IDs on the bottle labels match the COC <sup>(1)</sup> ?	<input checked="" type="checkbox"/>	<input type="checkbox"/>	<input type="checkbox"/>	
Is the COC properly relinquished by the client with date and time recorded <sup>(1)</sup> ?	<input checked="" type="checkbox"/>	<input type="checkbox"/>	<input type="checkbox"/>	
For volatiles in water — is there headspace (> ¼ inch bubble) present? If yes, contact client and note in narrative.	<input checked="" type="checkbox"/>	<input type="checkbox"/>	<input type="checkbox"/>	
Are samples preserved that require preservation and was it checked <sup>(1)</sup> ? (note ID of confirmation instrument used in comments) / (preservation is not confirmed for subcontracted analyses in order to insure sample integrity)(pH < 2 for samples preserved with HNO <sub>3</sub> , HCL, H <sub>2</sub> SO <sub>4</sub> ) / (pH > 10 for samples preserved with NaAsO <sub>2</sub> +NaOH, ZnAc+NaOH)	<input checked="" type="checkbox"/>	<input type="checkbox"/>	<input type="checkbox"/>	
Additional Comments (if any):				

<sup>(1)</sup> If NO, then contact the client before proceeding with analysis and note date/time and person contacted as well as the corrective action to in the additional comments (above) and the case narrative.

Reviewed by (Project Manager): [Signature]

Date/Time Reviewed: 1/30/20

Origins Laboratory, Inc.

Jefe Pellegrini

The results in this report apply to the samples analyzed in accordance with the chain of custody document. This analytical report must be reproduced in its entirety.

Eagle Environmental Consulting, Inc.  
8000 W 44th Ave  
Wheat Ridge CO 80033

Martin C Eckert III  
Project Number: [none]  
Project: Noble - Agricultural Products Federal #32-17

MW-07@0-2.5'

1/28/2020 11:14:00AM

Analyte	Result	Reporting Limit	Units	Dilution	Batch	Analyst	Prepared	Analyzed	Notes
---------	--------	-----------------	-------	----------	-------	---------	----------	----------	-------

Origins Laboratory, Inc.  
Y001422-01 (Soil)

## Diesel Range Organics (DRO/TEPH) by EPA 8015D

Diesel (C10-C28)	ND	50.0	mg/kg	1	B0A2903	TEM	01/29/2020	02/01/2020	U
------------------	----	------	-------	---	---------	-----	------------	------------	---

Surrogate: o-Terphenyl	81.6 %	50-150			"	"	"		
------------------------	--------	--------	--	--	---	---	---	--	--

## GBTEX + Naphthalene by EPA 8260D

Gasoline Range Hydrocarbons	ND	0.200	mg/kg	1	B0A2902	KDK	01/29/2020	01/30/2020	U
Benzene	ND	0.002	"	"	"	KDK	"	"	U
Toluene	ND	0.002	"	"	"	KDK	"	"	U
Ethylbenzene	ND	0.002	"	"	"	KDK	"	"	U
Xylenes, total	ND	0.002	"	"	"	KDK	"	"	U
Naphthalene	ND	0.008	"	"	"	KDK	"	"	U

Surrogate: 1,2-Dichloroethane-d4	79.4 %	70-130			"	"	"		
Surrogate: Toluene-d8	91.6 %	70-130			"	"	"		
Surrogate: 4-Bromofluorobenzene	99.5 %	70-130			"	"	"		

Origins Laboratory, Inc.



The results in this report apply to the samples analyzed in accordance with the chain of custody document. This analytical report must be reproduced in its entirety.

Eagle Environmental Consulting, Inc.  
8000 W 44th Ave  
Wheat Ridge CO 80033

Martin C Eckert III  
Project Number: [none]  
Project: Noble - Agricultural Products Federal #32-17

MW-08@0-2.5'

1/28/2020 10:58:00AM

Analyte	Result	Reporting Limit	Units	Dilution	Batch	Analyst	Prepared	Analyzed	Notes
---------	--------	-----------------	-------	----------	-------	---------	----------	----------	-------

Origins Laboratory, Inc.  
Y001422-02 (Soil)

## Diesel Range Organics (DRO/TEPH) by EPA 8015D

Diesel (C10-C28)	ND	50.0	mg/kg	1	B0A2903	TEM	01/29/2020	02/01/2020	U
------------------	----	------	-------	---	---------	-----	------------	------------	---

Surrogate: o-Terphenyl	78.5 %	50-150			"	"	"		
------------------------	--------	--------	--	--	---	---	---	--	--

## GBTEX + Naphthalene by EPA 8260D

Gasoline Range Hydrocarbons	ND	0.200	mg/kg	1	B0A2902	KDK	01/29/2020	01/30/2020	U
Benzene	ND	0.002	"	"	"	KDK	"	"	U
Toluene	ND	0.002	"	"	"	KDK	"	"	U
Ethylbenzene	ND	0.002	"	"	"	KDK	"	"	U
Xylenes, total	ND	0.002	"	"	"	KDK	"	"	U
Naphthalene	ND	0.008	"	"	"	KDK	"	"	U

Surrogate: 1,2-Dichloroethane-d4	82.5 %	70-130			"	"	"		
Surrogate: Toluene-d8	91.1 %	70-130			"	"	"		
Surrogate: 4-Bromofluorobenzene	98.4 %	70-130			"	"	"		

Origins Laboratory, Inc.



The results in this report apply to the samples analyzed in accordance with the chain of custody document. This analytical report must be reproduced in its entirety.

Eagle Environmental Consulting, Inc.  
8000 W 44th Ave  
Wheat Ridge CO 80033

Martin C Eckert III  
Project Number: [none]  
Project: Noble - Agricultural Products Federal #32-17

MW-09@2.5-5'

1/28/2020 10:40:00AM

Analyte	Result	Reporting Limit	Units	Dilution	Batch	Analyst	Prepared	Analyzed	Notes
---------	--------	-----------------	-------	----------	-------	---------	----------	----------	-------

Origins Laboratory, Inc.  
Y001422-03 (Soil)

## Diesel Range Organics (DRO/TEPH) by EPA 8015D

Diesel (C10-C28)	ND	50.0	mg/kg	1	B0A2903	TEM	01/29/2020	02/01/2020	U
------------------	----	------	-------	---	---------	-----	------------	------------	---

Surrogate: o-Terphenyl	78.6 %	50-150			"	"	"		
------------------------	--------	--------	--	--	---	---	---	--	--

## GBTEX + Naphthalene by EPA 8260D

Gasoline Range Hydrocarbons	ND	0.200	mg/kg	1	B0A2902	KDK	01/29/2020	01/30/2020	U
Benzene	ND	0.002	"	"	"	KDK	"	"	U
Toluene	ND	0.002	"	"	"	KDK	"	"	U
Ethylbenzene	ND	0.002	"	"	"	KDK	"	"	U
Xylenes, total	ND	0.002	"	"	"	KDK	"	"	U
Naphthalene	ND	0.008	"	"	"	KDK	"	"	U

Surrogate: 1,2-Dichloroethane-d4	82.1 %	70-130			"	"	"		
Surrogate: Toluene-d8	91.8 %	70-130			"	"	"		
Surrogate: 4-Bromofluorobenzene	98.9 %	70-130			"	"	"		

Origins Laboratory, Inc.



The results in this report apply to the samples analyzed in accordance with the chain of custody document. This analytical report must be reproduced in its entirety.

Eagle Environmental Consulting, Inc.  
8000 W 44th Ave  
Wheat Ridge CO 80033

Martin C Eckert III  
Project Number: [none]  
Project: Noble - Agricultural Products Federal #32-17

MW-10@0-2.5'

1/28/2020 10:23:00AM

Analyte	Result	Reporting Limit	Units	Dilution	Batch	Analyst	Prepared	Analyzed	Notes
---------	--------	-----------------	-------	----------	-------	---------	----------	----------	-------

Origins Laboratory, Inc.  
Y001422-04 (Soil)

## Diesel Range Organics (DRO/TEPH) by EPA 8015D

Diesel (C10-C28)	ND	50.0	mg/kg	1	B0A2903	TEM	01/29/2020	02/01/2020	U
------------------	----	------	-------	---	---------	-----	------------	------------	---

Surrogate: o-Terphenyl	71.8 %	50-150			"	"	"		
------------------------	--------	--------	--	--	---	---	---	--	--

## GBTEX + Naphthalene by EPA 8260D

Gasoline Range Hydrocarbons	ND	0.200	mg/kg	1	B0A2902	KDK	01/29/2020	01/30/2020	U
Benzene	ND	0.002	"	"	"	KDK	"	"	U
Toluene	ND	0.002	"	"	"	KDK	"	"	U
Ethylbenzene	ND	0.002	"	"	"	KDK	"	"	U
Xylenes, total	ND	0.002	"	"	"	KDK	"	"	U
Naphthalene	ND	0.008	"	"	"	KDK	"	"	U

Surrogate: 1,2-Dichloroethane-d4	79.7 %	70-130			"	"	"		
Surrogate: Toluene-d8	88.8 %	70-130			"	"	"		
Surrogate: 4-Bromofluorobenzene	96.9 %	70-130			"	"	"		

Origins Laboratory, Inc.



The results in this report apply to the samples analyzed in accordance with the chain of custody document. This analytical report must be reproduced in its entirety.



Eagle Environmental Consulting, Inc.

8000 W 44th Ave

Wheat Ridge CO 80033

Martin C Eckert III

Project Number: [none]

Project: Noble - Agricultural Products Federal #32-17

MW-11@2.5-5'

1/28/2020 10:07:00AM

Analyte	Result	Reporting Limit	Units	Dilution	Batch	Analyst	Prepared	Analyzed	Notes
---------	--------	-----------------	-------	----------	-------	---------	----------	----------	-------

Origins Laboratory, Inc.  
Y001422-05 (Soil)

## Diesel Range Organics (DRO/TEPH) by EPA 8015D

Diesel (C10-C28)	ND	50.0	mg/kg	1	B0A2903	TEM	01/29/2020	02/01/2020	U
------------------	----	------	-------	---	---------	-----	------------	------------	---

Surrogate: o-Terphenyl	72.1 %	50-150			"	"	"		
------------------------	--------	--------	--	--	---	---	---	--	--

## GBTEX + Naphthalene by EPA 8260D

Gasoline Range Hydrocarbons	ND	0.200	mg/kg	1	B0A2902	KDK	01/29/2020	01/30/2020	U
Benzene	ND	0.002	"	"	"	KDK	"	"	U
Toluene	ND	0.002	"	"	"	KDK	"	"	U
Ethylbenzene	ND	0.002	"	"	"	KDK	"	"	U
Xylenes, total	ND	0.002	"	"	"	KDK	"	"	U
Naphthalene	ND	0.008	"	"	"	KDK	"	"	U

Surrogate: 1,2-Dichloroethane-d4	82.9 %	70-130			"	"	"		
Surrogate: Toluene-d8	90.1 %	70-130			"	"	"		
Surrogate: 4-Bromofluorobenzene	98.2 %	70-130			"	"	"		

Origins Laboratory, Inc.



The results in this report apply to the samples analyzed in accordance with the chain of custody document. This analytical report must be reproduced in its entirety.



Eagle Environmental Consulting, Inc.  
8000 W 44th Ave  
Wheat Ridge CO 80033

Martin C Eckert III  
Project Number: [none]  
Project: Noble - Agricultural Products Federal #32-17

MW-12@2.5-5'  
1/28/2020 9:48:00AM

Analyte	Result	Limit	Units	Dilution	Batch	Analyst	Prepared	Analyzed	Notes
---------	--------	-------	-------	----------	-------	---------	----------	----------	-------

Origins Laboratory, Inc.  
Y001422-06 (Soil)

## Diesel Range Organics (DRO/TEPH) by EPA 8015D

Diesel (C10-C28)	ND	50.0	mg/kg	1	B0A2903	TEM	01/29/2020	02/01/2020	U
------------------	----	------	-------	---	---------	-----	------------	------------	---

Surrogate: o-Terphenyl	81.5 %	50-150			"	"	"		
------------------------	--------	--------	--	--	---	---	---	--	--

## GBTEX + Naphthalene by EPA 8260D

Gasoline Range Hydrocarbons	ND	0.200	mg/kg	1	B0A2902	KDK	01/29/2020	01/30/2020	U
Benzene	ND	0.002	"	"	"	KDK	"	"	U
Toluene	ND	0.002	"	"	"	KDK	"	"	U
Ethylbenzene	ND	0.002	"	"	"	KDK	"	"	U
Xylenes, total	ND	0.002	"	"	"	KDK	"	"	U
Naphthalene	ND	0.008	"	"	"	KDK	"	"	U

Surrogate: 1,2-Dichloroethane-d4	80.8 %	70-130			"	"	"		
Surrogate: Toluene-d8	89.5 %	70-130			"	"	"		
Surrogate: 4-Bromofluorobenzene	98.8 %	70-130			"	"	"		

Origins Laboratory, Inc.



The results in this report apply to the samples analyzed in accordance with the chain of custody document. This analytical report must be reproduced in its entirety.

Eagle Environmental Consulting, Inc.  
8000 W 44th Ave  
Wheat Ridge CO 80033

Martin C Eckert III  
Project Number: [none]  
Project: Noble - Agricultural Products Federal #32-17

**MW-13@0-2.5'**  
**1/28/2020 9:25:00AM**

Analyte	Result	Reporting Limit	Units	Dilution	Batch	Analyst	Prepared	Analyzed	Notes
---------	--------	-----------------	-------	----------	-------	---------	----------	----------	-------

**Origins Laboratory, Inc.**  
**Y001422-07 (Soil)**

## Diesel Range Organics (DRO/TEPH) by EPA 8015D

Diesel (C10-C28)	ND	50.0	mg/kg	1	B0A2903	TEM	01/29/2020	02/01/2020	U
------------------	----	------	-------	---	---------	-----	------------	------------	---

Surrogate: o-Terphenyl	69.2 %	50-150			"	"	"		
------------------------	--------	--------	--	--	---	---	---	--	--

## GBTEX + Naphthalene by EPA 8260D

Gasoline Range Hydrocarbons	ND	0.200	mg/kg	1	B0A2902	KDK	01/29/2020	01/30/2020	U
Benzene	ND	0.002	"	"	"	KDK	"	"	U
Toluene	ND	0.002	"	"	"	KDK	"	"	U
Ethylbenzene	ND	0.002	"	"	"	KDK	"	"	U
Xylenes, total	ND	0.002	"	"	"	KDK	"	"	U
Naphthalene	ND	0.008	"	"	"	KDK	"	"	U

Surrogate: 1,2-Dichloroethane-d4	83.7 %	70-130			"	"	"		
Surrogate: Toluene-d8	89.5 %	70-130			"	"	"		
Surrogate: 4-Bromofluorobenzene	99.6 %	70-130			"	"	"		

Origins Laboratory, Inc.



The results in this report apply to the samples analyzed in accordance with the chain of custody document. This analytical report must be reproduced in its entirety.

Eagle Environmental Consulting, Inc.

8000 W 44th Ave

Wheat Ridge CO 80033

Martin C Eckert III

Project Number: [none]

Project: Noble - Agricultural Products Federal #32-17

**Volatile Organic Compounds by GC/MS SW846 8260D - Quality Control**  
**Origins Laboratory, Inc.**

Analyte	Result	Reporting Limit	Units	Spike Level	Source Result	%REC	%REC Limits	RPD	RPD Limit	Notes
<b>Batch B0A2902 - EPA 5030 (soil)</b>										
<b>Blank (B0A2902-BLK1)</b>					Prepared: 01/29/2020 Analyzed: 01/29/2020					
Gasoline Range Hydrocarbons	ND	0.200	mg/kg							U
Benzene	ND	0.002	"							U
Toluene	ND	0.002	"							U
Ethylbenzene	ND	0.002	"							U
Xylenes, total	ND	0.002	"							U
Naphthalene	ND	0.008	"							U
Surrogate: 1,2-Dichloroethane-d4	0.097		"	0.125		77.3	70-130			
Surrogate: Toluene-d8	0.11		"	0.125		89.2	70-130			
Surrogate: 4-Bromofluorobenzene	0.12		"	0.125		96.5	70-130			

Origins Laboratory, Inc.



The results in this report apply to the samples analyzed in accordance with the chain of custody document. This analytical report must be reproduced in its entirety.

Eagle Environmental Consulting, Inc.

8000 W 44th Ave

Wheat Ridge CO 80033

Martin C Eckert III

Project Number: [none]

Project: Noble - Agricultural Products Federal #32-17

**Volatile Organic Compounds by GC/MS SW846 8260D - Quality Control**  
**Origins Laboratory, Inc.**

Analyte	Result	Reporting Limit	Units	Spike Level	Source Result	%REC	%REC Limits	RPD	RPD Limit	Notes
---------	--------	-----------------	-------	-------------	---------------	------	-------------	-----	-----------	-------

Batch B0A2902 - EPA 5030 (soil)

**LCS (B0A2902-BS1)**

Prepared: 01/29/2020 Analyzed: 01/29/2020

Benzene	0.046	0.002	mg/kg	0.0500		92.5	70-130			
Toluene	0.041	0.002	"	0.0500		81.6	70-130			
Ethylbenzene	0.046	0.002	"	0.0500		91.6	70-130			
m,p-Xylene	0.094	0.004	"	0.100		93.8	70-130			
o-Xylene	0.043	0.002	"	0.0500		85.4	70-130			
Naphthalene	0.041	0.008	"	0.0500		81.3	70-130			
Surrogate: 1,2-Dichloroethane-d4	0.10		"	0.125		79.7	70-130			
Surrogate: Toluene-d8	0.11		"	0.125		85.5	70-130			
Surrogate: 4-Bromofluorobenzene	0.13		"	0.125		102	70-130			

Origins Laboratory, Inc.



The results in this report apply to the samples analyzed in accordance with the chain of custody document. This analytical report must be reproduced in its entirety.

Jen Pellegrini For Noelle Doyle Mathis, President

Eagle Environmental Consulting, Inc.

8000 W 44th Ave

Wheat Ridge CO 80033

Martin C Eckert III

Project Number: [none]

Project: Noble - Agricultural Products Federal #32-17

**Volatile Organic Compounds by GC/MS SW846 8260D - Quality Control**  
**Origins Laboratory, Inc.**

Analyte	Result	Reporting Limit	Units	Spike Level	Source Result	%REC	%REC Limits	RPD	RPD Limit	Notes
---------	--------	-----------------	-------	-------------	---------------	------	-------------	-----	-----------	-------

Batch B0A2902 - EPA 5030 (soil)

Matrix Spike (B0A2902-MS1)		Source: Y001389-10			Prepared: 01/29/2020 Analyzed: 01/29/2020					
Benzene	0.045	0.002	mg/kg	0.0500	ND	90.8	70-130			
Toluene	0.040	0.002	"	0.0500	ND	80.1	70-130			
Ethylbenzene	0.042	0.002	"	0.0500	ND	84.0	70-130			
m,p-Xylene	0.088	0.004	"	0.100	0.001	87.1	70-130			
o-Xylene	0.041	0.002	"	0.0500	ND	82.6	70-130			
Naphthalene	0.046	0.008	"	0.0500	0.002	88.6	70-130			
Surrogate: 1,2-Dichloroethane-d4	0.095		"	0.125		76.0	70-130			
Surrogate: Toluene-d8	0.11		"	0.125		85.5	70-130			
Surrogate: 4-Bromofluorobenzene	0.13		"	0.125		100	70-130			

Origins Laboratory, Inc.



The results in this report apply to the samples analyzed in accordance with the chain of custody document. This analytical report must be reproduced in its entirety.

Jen Pellegrini For Noelle Doyle Mathis, President

Eagle Environmental Consulting, Inc.

8000 W 44th Ave

Wheat Ridge CO 80033

Martin C Eckert III

Project Number: [none]

Project: Noble - Agricultural Products Federal #32-17

**Volatile Organic Compounds by GC/MS SW846 8260D - Quality Control**  
**Origins Laboratory, Inc.**

Analyte	Result	Reporting Limit	Units	Spike Level	Source Result	%REC	%REC Limits	RPD	RPD Limit	Notes
---------	--------	-----------------	-------	-------------	---------------	------	-------------	-----	-----------	-------

Batch B0A2902 - EPA 5030 (soil)

Matrix Spike Dup (B0A2902-MSD1)		Source: Y001389-10			Prepared: 01/29/2020 Analyzed: 01/29/2020					
Benzene	0.047	0.002	mg/kg	0.0500	ND	93.6	70-130	2.99	20	
Toluene	0.042	0.002	"	0.0500	ND	83.8	70-130	4.49	20	
Ethylbenzene	0.045	0.002	"	0.0500	ND	89.2	70-130	6.00	20	
m,p-Xylene	0.092	0.004	"	0.100	0.001	91.2	70-130	4.64	20	
o-Xylene	0.043	0.002	"	0.0500	ND	86.1	70-130	4.08	20	
Naphthalene	0.044	0.008	"	0.0500	0.002	85.1	70-130	3.83	20	
Surrogate: 1,2-Dichloroethane-d4	0.095		"	0.125		75.9	70-130			
Surrogate: Toluene-d8	0.11		"	0.125		86.3	70-130			
Surrogate: 4-Bromofluorobenzene	0.12		"	0.125		99.2	70-130			

Origins Laboratory, Inc.



The results in this report apply to the samples analyzed in accordance with the chain of custody document. This analytical report must be reproduced in its entirety.

Jen Pellegrini For Noelle Doyle Mathis, President

Eagle Environmental Consulting, Inc.

8000 W 44th Ave

Wheat Ridge CO 80033

Martin C Eckert III

Project Number: [none]

Project: Noble - Agricultural Products Federal  
#32-17

**Volatile Organic Compounds by GC/MS SW846 8260D - Quality Control**  
**Origins Laboratory, Inc.**

Analyte	Result	Reporting Limit	Units	Spike Level	Source Result	%REC	%REC Limits	RPD	RPD Limit	Notes
---------	--------	--------------------	-------	----------------	------------------	------	----------------	-----	--------------	-------

Batch B0A2903 - EPA 3580

Blank (B0A2903-BLK1)

Prepared: 01/29/2020 Analyzed: 01/31/2020

Diesel (C10-C28)	ND	25.0	mg/kg							U
Surrogate: o-Terphenyl	18		"	25.0		71.2	50-150			

Origins Laboratory, Inc.



*The results in this report apply to the samples analyzed in accordance with the chain of custody document. This analytical report must be reproduced in its entirety.*

Jen Pellegrini For Noelle Doyle Mathis, President

Eagle Environmental Consulting, Inc.

8000 W 44th Ave

Wheat Ridge CO 80033

Martin C Eckert III

Project Number: [none]

Project: Noble - Agricultural Products Federal  
#32-17

**Extractable Petroleum Hydrocarbons by 8015D - Quality Control**  
**Origins Laboratory, Inc.**

Analyte	Result	Reporting Limit	Units	Spike Level	Source Result	%REC	%REC Limits	RPD	RPD Limit	Notes
---------	--------	--------------------	-------	----------------	------------------	------	----------------	-----	--------------	-------

Batch B0A2903 - EPA 3580

**LCS (B0A2903-BS1)**

Prepared: 01/29/2020 Analyzed: 01/31/2020

Diesel (C10-C28)	935	50.0	mg/kg	1000		93.5	70-130			
Surrogate: o-Terphenyl	49		"	50.0		97.6	50-150			

Origins Laboratory, Inc.



*The results in this report apply to the samples analyzed in  
accordance with the chain of custody document. This  
analytical report must be reproduced in its entirety.*

Jen Pellegrini For Noelle Doyle Mathis, President



Eagle Environmental Consulting, Inc.

8000 W 44th Ave

Wheat Ridge CO 80033

Martin C Eckert III

Project Number: [none]

Project: Noble - Agricultural Products Federal  
#32-17

**Extractable Petroleum Hydrocarbons by 8015D - Quality Control**  
**Origins Laboratory, Inc.**

Analyte	Result	Reporting Limit	Units	Spike Level	Source Result	%REC	%REC Limits	RPD	RPD Limit	Notes
---------	--------	--------------------	-------	----------------	------------------	------	----------------	-----	--------------	-------

Batch B0A2903 - EPA 3580

Matrix Spike (B0A2903-MS1)		Source: Y001401-06			Prepared: 01/29/2020 Analyzed: 01/31/2020					
Diesel (C10-C28)	754	50.0	mg/kg	1000	ND	75.4	70-130			
Surrogate: o-Terphenyl	42		"	50.0		84.5	50-150			

Origins Laboratory, Inc.



*The results in this report apply to the samples analyzed in accordance with the chain of custody document. This analytical report must be reproduced in its entirety.*

Jen Pellegrini For Noelle Doyle Mathis, President

Eagle Environmental Consulting, Inc.

8000 W 44th Ave

Wheat Ridge CO 80033

Martin C Eckert III

Project Number: [none]

Project: Noble - Agricultural Products Federal  
#32-17

**Extractable Petroleum Hydrocarbons by 8015D - Quality Control**  
**Origins Laboratory, Inc.**

Analyte	Result	Reporting Limit	Units	Spike Level	Source Result	%REC	%REC Limits	RPD	RPD Limit	Notes
---------	--------	--------------------	-------	----------------	------------------	------	----------------	-----	--------------	-------

Batch B0A2903 - EPA 3580

<b>Matrix Spike Dup (B0A2903-MSD1)</b>		<b>Source: Y001401-06</b>			Prepared: 01/29/2020 Analyzed: 01/31/2020					
Diesel (C10-C28)	768	50.0	mg/kg	1000	ND	76.8	70-130	1.82	35	
Surrogate: o-Terphenyl	35		"	50.0		70.2	50-150			

Origins Laboratory, Inc.



*The results in this report apply to the samples analyzed in accordance with the chain of custody document. This analytical report must be reproduced in its entirety.*

Jen Pellegrini For Noelle Doyle Mathis, President

Eagle Environmental Consulting, Inc.

8000 W 44th Ave

Wheat Ridge CO 80033

Martin C Eckert III

Project Number: [none]

Project: Noble - Agricultural Products Federal  
#32-17

### Notes and Definitions

U Sample is Non-Detect.

ND Analyte NOT DETECTED at or above the reporting limit

RPD Relative Percent Difference

All soil results are reported at a wet weight basis.

Origins Laboratory, Inc.



*The results in this report apply to the samples analyzed in accordance with the chain of custody document. This analytical report must be reproduced in its entirety.*



February 17, 2020

Eagle Environmental Consulting, Inc.

Martin C Eckert III

8000 W 44th Ave

Wheat Ridge CO 80033

**Project Name - Noble - Agricultural Products  
Federal #32-17**

**Project Number - [none]**

Attached are your analytical results for Noble - Agricultural Products Federal #32-17 received by Origins Laboratory, Inc. February 12, 2020. This project is associated with Origins project number Y002159-01.

The analytical results in the following report were analyzed under the guidelines of EPA Methods. These methods are identified as follows; "SW" are defined in SW-846, "EPA" are defined in 40CFR part 136 and "SM" are defined in the most current revision of Standard Methods For the Examination of Water and Wastewater.

The analytical results apply specifically to the samples and analyses specified per the attached Chain of Custody. As such, this report shall not be reproduced except in full, without the written approval of Origin's laboratory.

Unless otherwise noted, the analytical results for all soil samples are reported on a wet weight basis. All analytical analyses were performed under NELAP guidelines unless noted by a data qualifier.

Any holding time exceedances, deviations from the method specifications or deviations from Origins Laboratory's Standard Operating Procedures are outlined in the case narrative.

Thank you for selecting Origins for your analytical needs. Please contact us with any questions concerning this report, or if we can help with anything at all.

Origins Laboratory, Inc.  
303.433.1322  
o-squad@oelabinc.com



1725 Elk Place, Denver, CO 80211 | Phone: 303.433.1322 | Fax: 303.265.9645

Eagle Environmental Consulting, Inc.

8000 W 44th Ave

Wheat Ridge CO 80033

Martin C Eckert III

Project Number: [none]

Project: Noble - Agricultural Products Federal  
#32-17

## CROSS REFERENCE REPORT

Sample ID	Laboratory ID	Matrix	Date Sampled	Date Received
MW-01R	Y002159-01	Water	February 12, 2020 14:33	02/12/2020 16:50
MW-02R	Y002159-02	Water	February 12, 2020 14:43	02/12/2020 16:50
MW-03R	Y002159-03	Water	February 12, 2020 14:51	02/12/2020 16:50
MW-04R	Y002159-04	Water	February 12, 2020 14:58	02/12/2020 16:50
MW-05R	Y002159-05	Water	February 12, 2020 15:06	02/12/2020 16:50
MW-06R2	Y002159-06	Water	February 12, 2020 15:15	02/12/2020 16:50
MW-07	Y002159-07	Water	February 12, 2020 13:50	02/12/2020 16:50
MW-08	Y002159-08	Water	February 12, 2020 13:59	02/12/2020 16:50
MW-09	Y002159-09	Water	February 12, 2020 14:09	02/12/2020 16:50
MW-10	Y002159-10	Water	February 12, 2020 14:23	02/12/2020 16:50
MW-11	Y002159-11	Water	February 12, 2020 14:26	02/12/2020 16:50
MW-12	Y002159-12	Water	February 12, 2020 14:40	02/12/2020 16:50
MW-13	Y002159-13	Water	February 12, 2020 14:54	02/12/2020 16:50

Origins Laboratory, Inc.



*The results in this report apply to the samples analyzed in  
accordance with the chain of custody document. This  
analytical report must be reproduced in its entirety.*

Eagle Environmental Consulting, Inc.  
8000 W 44th Ave  
Wheat Ridge CO 80033

Martin C Eckert III  
Project Number: [none]  
Project: Noble - Agricultural Products Federal #32-17

www.originslaboratory.com

Y0021591/2

page 1 of 2

**ORIGINS**  
LABORATORY, INC

Client: Eagle Environmental Consulting  
Address: 8000 W 44th Ave  
Telephone Number: 303-433-0479  
Email Address: mc3@eagle-lab.com

Project Manager: Martin Eckert III  
Project Name: Agricultural Production Fedoa / #32-17  
Project Number: ---  
Samples Collected By: MM/qaec

1725 Elk Place | Denver, CO 80211 | Phone: 303.433.1322 | Fax: 303.265.9645

Sample ID Description	Date Sampled	Time Sampled	# of Containers	Preservative				Matrix			Analysis	Sample Instructions	
				Unpreserved	HCl	HNO <sub>3</sub>	Other	Groundwater	Soil	Air Summa Canister #			Other
MW-01R	2/12/20	1433	3		X				X				1
MW-02R		1443	1										2
MW-03R		1451	1										3
MW-04R		1458	1										4
MW-05R		1500	1										5
MW-06R		1515	1										6
MW-07		1550	1										7
MW-08		1359	1										8
MW-09		1409	1										9
MW-10		1413	1										10

Relinquished By:	Date:	Time:	Received By:	Date:	Time:	Turnaround Time:
<u>[Signature]</u>	2/12/20	1650	<u>[Signature]</u>	2/12/20	1650	Same Day <input type="checkbox"/> 24 Hr <input type="checkbox"/>
<u>[Signature]</u>			<u>[Signature]</u>			48 Hr <input type="checkbox"/> 72 Hr <input type="checkbox"/>
						Standard <input checked="" type="checkbox"/>

Date Results Needed: Noble

Temp Received: 1.9

[Signature]

Origins Laboratory, Inc.

Jefe Pellegrini

The results in this report apply to the samples analyzed in accordance with the chain of custody document. This analytical report must be reproduced in its entirety.



Eagle Environmental Consulting, Inc.  
8000 W 44th Ave  
Wheat Ridge CO 80033

Martin C Eckert III  
Project Number: [none]  
Project: Noble - Agricultural Products Federal #32-17

**ORIGINS**  
LABORATORY, INC

www.originslaboratory.com

Y0021592

page 2 of 2

Client: Eagle Environmental Consulting  
Address: 8000 W. 44th Ave  
Wheat Ridge, CO  
Telephone Number: (303) 433-0479  
Email Address: MCE3@eagle-enviro.com

Project Manager: Martin Eckert III  
Project Name: Agricultural Products Federal #32-17  
Project Number: [none]  
Samples Collected By: MM/GEC

1725 Elk Place | Denver, CO 80211 | Phone: 303.433.1322 | Fax: 303.265.9645

Sample ID Description	Date Sampled	Time Sampled	# of Containers	Preservative			Matrix			Analysis	Sample Instructions
				Unpreserved	HCl	HNO <sub>3</sub>	Groundwater	Soil	Air Summa #		
MW-11	2/12/20	1420	3	X			X			BTEX	1
MW-12	2/12/20	1440	1								2
MW-13	2/12/20	1454	1								3
											4
											5
											6
											7
											8
											9
											10

Reinquisitioned By: [Signature] Date: 2/12/20 Time: 1500  
Reinquisitioned By: [Signature] Date: 2/12/20 Time: 1500

Turnaround Time: Same Day ☐ 24 Hr ☐ 48 Hr ☐ 72 Hr ☒ Standard

Temp Received: 1.9 Date Results Needed: Noble

Origins Laboratory, Inc.

Jefe Pellegrini

The results in this report apply to the samples analyzed in accordance with the chain of custody document. This analytical report must be reproduced in its entirety.

Eagle Environmental Consulting, Inc.

8000 W 44th Ave

Wheat Ridge CO 80033

Martin C Eckert III

Project Number: [none]

Project: Noble - Agricultural Products Federal #32-17

Origins Laboratory

F-012207-01-R1  
Effective Date: 01/09/12

## Sample Receipt Checklist

Origins Work Order: Y002159

Client: Eagle

Client Project ID: Agricultural Production

Checklist Completed by: JE KDK

Shipped Via: HD  
(UPS, FedEx, Hand Delivered, Pick-up, etc.)

Date/time completed: 02/13/2020

Airbill #: N/A

Matrix(s) Received: (Check all that apply): Soil/Solid ☒ Water ☐ Other: ☐

Cooler Number/Temperature: 1/1.9 °C 1 °C 1 °C (Describe) °C

Thermometer ID: T003

Requirement Description	Yes	No	N/A	Comments (if any)
If samples require cooling, was the temperature between 0°C to ≤ 6°C <sup>(1)</sup> ?	<input checked="" type="checkbox"/>	<input type="checkbox"/>	<input type="checkbox"/>	
Is there ice present (document if blue ice is used)	<input checked="" type="checkbox"/>	<input type="checkbox"/>	<input type="checkbox"/>	
Are custody seals present on cooler? (if so, document in comments if they are signed and dated, broken or intact)	<input type="checkbox"/>	<input type="checkbox"/>	<input checked="" type="checkbox"/>	
Are custody seals present on each sample container? (if so, document in comments if they are signed and dated, broken or intact)	<input type="checkbox"/>	<input type="checkbox"/>	<input checked="" type="checkbox"/>	
Were all samples received intact <sup>(1)</sup> ?	<input checked="" type="checkbox"/>	<input type="checkbox"/>	<input type="checkbox"/>	
Was adequate sample volume provided <sup>(1)</sup> ?	<input checked="" type="checkbox"/>	<input type="checkbox"/>	<input type="checkbox"/>	
Are short holding time analytes or samples with HTs due within 48 hours present <sup>(1)</sup> ?	<input type="checkbox"/>	<input type="checkbox"/>	<input checked="" type="checkbox"/>	
Is a chain-of-custody (COC) present and filled out completely <sup>(1)</sup> ?	<input checked="" type="checkbox"/>	<input type="checkbox"/>	<input type="checkbox"/>	
Does the COC agree with the number and type of sample bottles received <sup>(1)</sup> ?	<input checked="" type="checkbox"/>	<input type="checkbox"/>	<input type="checkbox"/>	
Do the sample IDs on the bottle labels match the COC <sup>(1)</sup> ?	<input checked="" type="checkbox"/>	<input type="checkbox"/>	<input type="checkbox"/>	
Is the COC properly relinquished by the client with date and time recorded <sup>(1)</sup> ?	<input checked="" type="checkbox"/>	<input type="checkbox"/>	<input type="checkbox"/>	
For volatiles in water – is there headspace (> ¼ inch bubble) present? If yes, contact client and note in narrative.	<input type="checkbox"/>	<input checked="" type="checkbox"/>	<input type="checkbox"/>	
Are samples preserved that require preservation and was it checked <sup>(1)</sup> ? (note ID of confirmation instrument used in comments) / (preservation is not confirmed for subcontracted analyses in order to insure sample integrity)(pH <2 for samples preserved with HNO <sub>3</sub> , HCL, H <sub>2</sub> SO <sub>4</sub> ) / (pH >10 for samples preserved with NaAsO <sub>2</sub> +NaOH, ZnAc+NaOH)	<input type="checkbox"/>	<input type="checkbox"/>	<input checked="" type="checkbox"/>	
Additional Comments (if any):				

<sup>(1)</sup>If NO, then contact the client before proceeding with analysis and note date/time and person contacted as well as the corrective action to in the additional comments (above) and the case narrative.

Reviewed by (Project Manager) JP

2/14/20  
Date/Time Reviewed

Origins Laboratory, Inc.

*Jefe Pellegrini*

The results in this report apply to the samples analyzed in accordance with the chain of custody document. This analytical report must be reproduced in its entirety.



Eagle Environmental Consulting, Inc.

8000 W 44th Ave

Wheat Ridge CO 80033

Martin C Eckert III

Project Number: [none]

Project: Noble - Agricultural Products Federal #32-17

MW-01R

2/12/2020 2:33:00PM

Analyte	Result	Reporting Limit	Units	Dilution	Batch	Analyst	Prepared	Analyzed	Notes
---------	--------	-----------------	-------	----------	-------	---------	----------	----------	-------

Origins Laboratory, Inc.

Y002159-01 (Water)

## BTEX by EPA 8260D

Benzene	504	50.0	ug/L	50	B0B1303	KDK	02/13/2020	02/13/2020	
Toluene	ND	50.0	"	"	"	KDK	"	"	U
Ethylbenzene	114	50.0	"	"	"	KDK	"	"	
Xylenes, total	2650	50.0	"	"	"	KDK	"	"	

Surrogate: 1,2-Dichloroethane-d4	109 %	70-130	"	"	"	"	"	"	
Surrogate: Toluene-d8	96.7 %	70-130	"	"	"	"	"	"	
Surrogate: 4-Bromofluorobenzene	99.8 %	70-130	"	"	"	"	"	"	

Origins Laboratory, Inc.



The results in this report apply to the samples analyzed in accordance with the chain of custody document. This analytical report must be reproduced in its entirety.

Eagle Environmental Consulting, Inc.  
8000 W 44th Ave  
Wheat Ridge CO 80033

Martin C Eckert III  
Project Number: [none]  
Project: Noble - Agricultural Products Federal #32-17

## MW-02R

2/12/2020 2:43:00PM

Analyte	Result	Reporting Limit	Units	Dilution	Batch	Analyst	Prepared	Analyzed	Notes
---------	--------	-----------------	-------	----------	-------	---------	----------	----------	-------

## Origins Laboratory, Inc. Y002159-02 (Water)

### BTEX by EPA 8260D

Benzene	19.6	4.00	ug/L	4	B0B1303	KDK	02/13/2020	02/13/2020	
Toluene	ND	4.00	"	"	"	KDK	"	"	U
Ethylbenzene	ND	4.00	"	"	"	KDK	"	"	U
Xylenes, total	ND	4.00	"	"	"	KDK	"	"	U

Surrogate: 1,2-Dichloroethane-d4	108 %	70-130			"	"	"
Surrogate: Toluene-d8	96.2 %	70-130			"	"	"
Surrogate: 4-Bromofluorobenzene	100 %	70-130			"	"	"

Origins Laboratory, Inc.



The results in this report apply to the samples analyzed in accordance with the chain of custody document. This analytical report must be reproduced in its entirety.

Eagle Environmental Consulting, Inc.  
8000 W 44th Ave  
Wheat Ridge CO 80033

Martin C Eckert III  
Project Number: [none]  
Project: Noble - Agricultural Products Federal #32-17

## MW-03R

2/12/2020 2:51:00PM

Analyte	Result	Reporting Limit	Units	Dilution	Batch	Analyst	Prepared	Analyzed	Notes
---------	--------	-----------------	-------	----------	-------	---------	----------	----------	-------

## Origins Laboratory, Inc. Y002159-03 (Water)

### BTEX by EPA 8260D

Benzene	254	4.00	ug/L	4	B0B1303	KDK	02/13/2020	02/13/2020	
Toluene	ND	4.00	"	"	"	KDK	"	"	U
Ethylbenzene	197	4.00	"	"	"	KDK	"	"	
Xylenes, total	1080	20.0	"	20	"	KDK	"	02/14/2020	

Surrogate: 1,2-Dichloroethane-d4	109 %	70-130			"	"	02/13/2020	
Surrogate: Toluene-d8	99.1 %	70-130			"	"	"	
Surrogate: 4-Bromofluorobenzene	99.9 %	70-130			"	"	"	

Origins Laboratory, Inc.



The results in this report apply to the samples analyzed in accordance with the chain of custody document. This analytical report must be reproduced in its entirety.

Eagle Environmental Consulting, Inc.  
8000 W 44th Ave  
Wheat Ridge CO 80033

Martin C Eckert III  
Project Number: [none]  
Project: Noble - Agricultural Products Federal #32-17

## MW-04R

2/12/2020 2:58:00PM

Analyte	Result	Reporting Limit	Units	Dilution	Batch	Analyst	Prepared	Analyzed	Notes
---------	--------	-----------------	-------	----------	-------	---------	----------	----------	-------

## Origins Laboratory, Inc. Y002159-04 (Water)

### BTEX by EPA 8260D

Benzene	31.6	4.00	ug/L	4	B0B1303	KDK	02/13/2020	02/13/2020	
Toluene	ND	4.00	"	"	"	KDK	"	"	U
Ethylbenzene	286	4.00	"	"	"	KDK	"	"	
Xylenes, total	1210	4.00	"	"	"	KDK	"	"	

Surrogate: 1,2-Dichloroethane-d4	107 %	70-130			"	"	"	"
Surrogate: Toluene-d8	98.1 %	70-130			"	"	"	"
Surrogate: 4-Bromofluorobenzene	99.6 %	70-130			"	"	"	"

Origins Laboratory, Inc.



The results in this report apply to the samples analyzed in accordance with the chain of custody document. This analytical report must be reproduced in its entirety.

Eagle Environmental Consulting, Inc.  
8000 W 44th Ave  
Wheat Ridge CO 80033

Martin C Eckert III  
Project Number: [none]  
Project: Noble - Agricultural Products Federal #32-17

## MW-05R

2/12/2020 3:06:00PM

Analyte	Result	Reporting Limit	Units	Dilution	Batch	Analyst	Prepared	Analyzed	Notes
---------	--------	-----------------	-------	----------	-------	---------	----------	----------	-------

## Origins Laboratory, Inc. Y002159-05 (Water)

### BTEX by EPA 8260D

Benzene	ND	4.00	ug/L	4	B0B1303	KDK	02/13/2020	02/13/2020	U
Toluene	ND	4.00	"	"	"	KDK	"	"	U
Ethylbenzene	ND	4.00	"	"	"	KDK	"	"	U
Xylenes, total	14.5	4.00	"	"	"	KDK	"	"	

Surrogate: 1,2-Dichloroethane-d4	110 %	70-130			"	"	"
Surrogate: Toluene-d8	96.3 %	70-130			"	"	"
Surrogate: 4-Bromofluorobenzene	99.0 %	70-130			"	"	"

Origins Laboratory, Inc.



The results in this report apply to the samples analyzed in accordance with the chain of custody document. This analytical report must be reproduced in its entirety.

Eagle Environmental Consulting, Inc.  
8000 W 44th Ave  
Wheat Ridge CO 80033

Martin C Eckert III  
Project Number: [none]  
Project: Noble - Agricultural Products Federal #32-17

## MW-06R2

2/12/2020 3:15:00PM

Analyte	Result	Reporting Limit	Units	Dilution	Batch	Analyst	Prepared	Analyzed	Notes
---------	--------	-----------------	-------	----------	-------	---------	----------	----------	-------

## Origins Laboratory, Inc. Y002159-06 (Water)

### BTEX by EPA 8260D

Benzene	2.05	1.00	ug/L	1	B0B1303	KDK	02/13/2020	02/13/2020	
Toluene	ND	1.00	"	"	"	KDK	"	"	U
Ethylbenzene	116	1.00	"	"	"	ZZZ	"	02/14/2020	
Xylenes, total	1950	20.0	"	20	"	ZZZ	"	"	

Surrogate: 1,2-Dichloroethane-d4	91.6 %	70-130			"	"	"	"	
Surrogate: Toluene-d8	95.1 %	70-130			"	"	"	"	
Surrogate: 4-Bromofluorobenzene	111 %	70-130			"	"	"	"	

Origins Laboratory, Inc.



The results in this report apply to the samples analyzed in accordance with the chain of custody document. This analytical report must be reproduced in its entirety.

Eagle Environmental Consulting, Inc.  
8000 W 44th Ave  
Wheat Ridge CO 80033

Martin C Eckert III  
Project Number: [none]  
Project: Noble - Agricultural Products Federal #32-17

## MW-07

2/12/2020 1:50:00PM

Analyte	Result	Reporting Limit	Units	Dilution	Batch	Analyst	Prepared	Analyzed	Notes
---------	--------	-----------------	-------	----------	-------	---------	----------	----------	-------

## Origins Laboratory, Inc. Y002159-07 (Water)

### BTEX by EPA 8260D

Benzene	ND	1.00	ug/L	1	B0B1303	ZZZ	02/13/2020	02/14/2020	U
Toluene	ND	1.00	"	"	"	ZZZ	"	"	U
Ethylbenzene	ND	1.00	"	"	"	ZZZ	"	"	U
Xylenes, total	ND	1.00	"	"	"	ZZZ	"	"	U

Surrogate: 1,2-Dichloroethane-d4	91.8 %	70-130	"	"	"
Surrogate: Toluene-d8	93.1 %	70-130	"	"	"
Surrogate: 4-Bromofluorobenzene	111 %	70-130	"	"	"

Origins Laboratory, Inc.



The results in this report apply to the samples analyzed in accordance with the chain of custody document. This analytical report must be reproduced in its entirety.

Eagle Environmental Consulting, Inc.  
8000 W 44th Ave  
Wheat Ridge CO 80033

Martin C Eckert III  
Project Number: [none]  
Project: Noble - Agricultural Products Federal #32-17

## MW-08

2/12/2020 1:59:00PM

Analyte	Result	Reporting Limit	Units	Dilution	Batch	Analyst	Prepared	Analyzed	Notes
---------	--------	-----------------	-------	----------	-------	---------	----------	----------	-------

## Origins Laboratory, Inc. Y002159-08 (Water)

### BTEX by EPA 8260D

Benzene	ND	1.00	ug/L	1	B0B1303	KDK	02/13/2020	02/13/2020	U
Toluene	ND	1.00	"	"	"	KDK	"	"	U
Ethylbenzene	ND	1.00	"	"	"	KDK	"	"	U
Xylenes, total	ND	1.00	"	"	"	KDK	"	"	U

Surrogate: 1,2-Dichloroethane-d4	111 %	70-130	"	"	"
Surrogate: Toluene-d8	96.7 %	70-130	"	"	"
Surrogate: 4-Bromofluorobenzene	99.3 %	70-130	"	"	"

Origins Laboratory, Inc.



The results in this report apply to the samples analyzed in accordance with the chain of custody document. This analytical report must be reproduced in its entirety.



Eagle Environmental Consulting, Inc.

8000 W 44th Ave

Wheat Ridge CO 80033

Martin C Eckert III

Project Number: [none]

Project: Noble - Agricultural Products Federal #32-17

MW-09

2/12/2020 2:09:00PM

Analyte	Result	Reporting Limit	Units	Dilution	Batch	Analyst	Prepared	Analyzed	Notes
---------	--------	-----------------	-------	----------	-------	---------	----------	----------	-------

Origins Laboratory, Inc.

Y002159-09 (Water)

## BTEX by EPA 8260D

Benzene	ND	1.00	ug/L	1	B0B1303	KDK	02/13/2020	02/13/2020	U
Toluene	ND	1.00	"	"	"	KDK	"	"	U
Ethylbenzene	16.4	1.00	"	"	"	KDK	"	"	
Xylenes, total	119	1.00	"	"	"	KDK	"	"	

Surrogate: 1,2-Dichloroethane-d4

112 % 70-130

"

"

"

Surrogate: Toluene-d8

100 % 70-130

"

"

"

Surrogate: 4-Bromofluorobenzene

99.6 % 70-130

"

"

"

Origins Laboratory, Inc.



The results in this report apply to the samples analyzed in accordance with the chain of custody document. This analytical report must be reproduced in its entirety.

Eagle Environmental Consulting, Inc.  
8000 W 44th Ave  
Wheat Ridge CO 80033

Martin C Eckert III  
Project Number: [none]  
Project: Noble - Agricultural Products Federal #32-17

## MW-10

2/12/2020 2:23:00PM

Analyte	Result	Reporting Limit	Units	Dilution	Batch	Analyst	Prepared	Analyzed	Notes
---------	--------	-----------------	-------	----------	-------	---------	----------	----------	-------

## Origins Laboratory, Inc. Y002159-10 (Water)

### BTEX by EPA 8260D

Benzene	ND	1.00	ug/L	1	B0B1303	KDK	02/13/2020	02/13/2020	U
Toluene	ND	1.00	"	"	"	KDK	"	"	U
Ethylbenzene	ND	1.00	"	"	"	KDK	"	"	U
Xylenes, total	3.53	1.00	"	"	"	KDK	"	"	

Surrogate: 1,2-Dichloroethane-d4	110 %	70-130			"	"	"
Surrogate: Toluene-d8	102 %	70-130			"	"	"
Surrogate: 4-Bromofluorobenzene	101 %	70-130			"	"	"

Origins Laboratory, Inc.



The results in this report apply to the samples analyzed in accordance with the chain of custody document. This analytical report must be reproduced in its entirety.

Eagle Environmental Consulting, Inc.

8000 W 44th Ave

Wheat Ridge CO 80033

Martin C Eckert III

Project Number: [none]

Project: Noble - Agricultural Products Federal #32-17

MW-11

2/12/2020 2:26:00PM

Analyte	Result	Reporting Limit	Units	Dilution	Batch	Analyst	Prepared	Analyzed	Notes
---------	--------	-----------------	-------	----------	-------	---------	----------	----------	-------

Origins Laboratory, Inc.

Y002159-11 (Water)

## BTEX by EPA 8260D

Benzene	ND	1.00	ug/L	1	B0B1303	KDK	02/13/2020	02/13/2020	U
Toluene	ND	1.00	"	"	"	KDK	"	"	U
Ethylbenzene	ND	1.00	"	"	"	KDK	"	"	U
Xylenes, total	ND	1.00	"	"	"	KDK	"	"	U

Surrogate: 1,2-Dichloroethane-d4

110 % 70-130

"

"

"

Surrogate: Toluene-d8

99.8 % 70-130

"

"

"

Surrogate: 4-Bromofluorobenzene

100 % 70-130

"

"

"

Origins Laboratory, Inc.



The results in this report apply to the samples analyzed in accordance with the chain of custody document. This analytical report must be reproduced in its entirety.

Eagle Environmental Consulting, Inc.

8000 W 44th Ave

Wheat Ridge CO 80033

Martin C Eckert III

Project Number: [none]

Project: Noble - Agricultural Products Federal #32-17

## MW-12

2/12/2020 2:40:00PM

Analyte	Result	Reporting Limit	Units	Dilution	Batch	Analyst	Prepared	Analyzed	Notes
---------	--------	-----------------	-------	----------	-------	---------	----------	----------	-------

## Origins Laboratory, Inc.

Y002159-12 (Water)

### BTEX by EPA 8260D

Benzene	ND	1.00	ug/L	1	B0B1303	KDK	02/13/2020	02/13/2020	U
Toluene	ND	1.00	"	"	"	KDK	"	"	U
Ethylbenzene	ND	1.00	"	"	"	KDK	"	"	U
Xylenes, total	ND	1.00	"	"	"	KDK	"	"	U

Surrogate: 1,2-Dichloroethane-d4	110 %	70-130	"	"	"
Surrogate: Toluene-d8	97.1 %	70-130	"	"	"
Surrogate: 4-Bromofluorobenzene	99.2 %	70-130	"	"	"

Origins Laboratory, Inc.



The results in this report apply to the samples analyzed in accordance with the chain of custody document. This analytical report must be reproduced in its entirety.

Eagle Environmental Consulting, Inc.

8000 W 44th Ave

Wheat Ridge CO 80033

Martin C Eckert III

Project Number: [none]

Project: Noble - Agricultural Products Federal #32-17

## MW-13

2/12/2020 2:54:00PM

Analyte	Result	Reporting Limit	Units	Dilution	Batch	Analyst	Prepared	Analyzed	Notes
---------	--------	-----------------	-------	----------	-------	---------	----------	----------	-------

## Origins Laboratory, Inc. Y002159-13 (Water)

### BTEX by EPA 8260D

Benzene	ND	1.00	ug/L	1	B0B1303	KDK	02/13/2020	02/13/2020	U
Toluene	ND	1.00	"	"	"	KDK	"	"	U
Ethylbenzene	ND	1.00	"	"	"	KDK	"	"	U
Xylenes, total	ND	1.00	"	"	"	KDK	"	"	U

Surrogate: 1,2-Dichloroethane-d4	110 %	70-130	"	"	"
Surrogate: Toluene-d8	98.9 %	70-130	"	"	"
Surrogate: 4-Bromofluorobenzene	100 %	70-130	"	"	"

Origins Laboratory, Inc.



The results in this report apply to the samples analyzed in accordance with the chain of custody document. This analytical report must be reproduced in its entirety.

Eagle Environmental Consulting, Inc.

8000 W 44th Ave

Wheat Ridge CO 80033

Martin C Eckert III

Project Number: [none]

Project: Noble - Agricultural Products Federal  
#32-17

**Volatile Organic Compounds by GC/MS SW846 8260D - Quality Control**  
**Origins Laboratory, Inc.**

Analyte	Result	Reporting Limit	Units	Spike Level	Source Result	%REC	%REC Limits	RPD	RPD Limit	Notes
---------	--------	--------------------	-------	----------------	------------------	------	----------------	-----	--------------	-------

**Batch B0B1303 - EPA 5030B (Water)**

**Blank (B0B1303-BLK1)**

Prepared: 02/13/2020 Analyzed: 02/13/2020

Benzene	ND	1.00	ug/L							U
Toluene	ND	1.00	"							U
Ethylbenzene	ND	1.00	"							U
Xylenes, total	ND	1.00	"							U
Surrogate: 1,2-Dichloroethane-d4	68		"	62.5	109		70-130			
Surrogate: Toluene-d8	61		"	62.5	97.6		70-130			
Surrogate: 4-Bromofluorobenzene	62		"	62.5	99.1		70-130			

Origins Laboratory, Inc.



The results in this report apply to the samples analyzed in  
accordance with the chain of custody document. This  
analytical report must be reproduced in its entirety.

Eagle Environmental Consulting, Inc.

8000 W 44th Ave

Wheat Ridge CO 80033

Martin C Eckert III

Project Number: [none]

Project: Noble - Agricultural Products Federal  
#32-17

**Volatile Organic Compounds by GC/MS SW846 8260D - Quality Control**  
**Origins Laboratory, Inc.**

Analyte	Result	Reporting Limit	Units	Spike Level	Source Result	%REC	%REC Limits	RPD	RPD Limit	Notes
---------	--------	--------------------	-------	----------------	------------------	------	----------------	-----	--------------	-------

Batch B0B1303 - EPA 5030B (Water)

**LCS (B0B1303-BS1)**

Prepared: 02/13/2020 Analyzed: 02/13/2020

Benzene	51.8	1.00	ug/L	50.0		104	70-130			
Toluene	53.4	1.00	"	50.0		107	70-130			
Ethylbenzene	54.2	1.00	"	50.0		108	70-130			
m,p-Xylene	111	2.00	"	100		111	70-130			
o-Xylene	53.3	1.00	"	50.0		107	70-130			
Surrogate: 1,2-Dichloroethane-d4	63		"	62.5		101	70-130			
Surrogate: Toluene-d8	61		"	62.5		97.4	70-130			
Surrogate: 4-Bromofluorobenzene	63		"	62.5		101	70-130			

Origins Laboratory, Inc.



The results in this report apply to the samples analyzed in  
accordance with the chain of custody document. This  
analytical report must be reproduced in its entirety.

Eagle Environmental Consulting, Inc.

8000 W 44th Ave

Wheat Ridge CO 80033

Martin C Eckert III

Project Number: [none]

Project: Noble - Agricultural Products Federal #32-17

**Volatile Organic Compounds by GC/MS SW846 8260D - Quality Control**  
**Origins Laboratory, Inc.**

Analyte	Result	Reporting Limit	Units	Spike Level	Source Result	%REC	%REC Limits	RPD	RPD Limit	Notes
---------	--------	-----------------	-------	-------------	---------------	------	-------------	-----	-----------	-------

**Batch B0B1303 - EPA 5030B (Water)**

Matrix Spike (B0B1303-MS1)		Source: Y002167-21			Prepared: 02/13/2020 Analyzed: 02/13/2020					
Benzene	102	1.00	ug/L	50.0	47.9	108	70-130			
Toluene	52.7	1.00	"	50.0	ND	105	70-130			
Ethylbenzene	102	1.00	"	50.0	43.7	117	70-130			
m,p-Xylene	252	2.00	"	100	128	124	70-130			
o-Xylene	52.7	1.00	"	50.0	0.820	104	70-130			
Surrogate: 1,2-Dichloroethane-d4	66		"	62.5		105	70-130			
Surrogate: Toluene-d8	68		"	62.5		108	70-130			
Surrogate: 4-Bromofluorobenzene	63		"	62.5		100	70-130			

Origins Laboratory, Inc.



The results in this report apply to the samples analyzed in accordance with the chain of custody document. This analytical report must be reproduced in its entirety.



Eagle Environmental Consulting, Inc.

8000 W 44th Ave

Wheat Ridge CO 80033

Martin C Eckert III

Project Number: [none]

Project: Noble - Agricultural Products Federal #32-17

**Volatile Organic Compounds by GC/MS SW846 8260D - Quality Control**  
**Origins Laboratory, Inc.**

Analyte	Result	Reporting Limit	Units	Spike Level	Source Result	%REC	%REC Limits	RPD	RPD Limit	Notes
---------	--------	-----------------	-------	-------------	---------------	------	-------------	-----	-----------	-------

**Batch B0B1303 - EPA 5030B (Water)**

Matrix Spike Dup (B0B1303-MSD1)		Source: Y002167-21			Prepared: 02/13/2020 Analyzed: 02/13/2020					
Benzene	104	1.00	ug/L	50.0	47.9	113	70-130	2.30	20	
Toluene	54.9	1.00	"	50.0	ND	110	70-130	4.05	20	
Ethylbenzene	105	1.00	"	50.0	43.7	123	70-130	2.92	20	
m,p-Xylene	255	2.00	"	100	128	127	70-130	1.28	20	
o-Xylene	55.0	1.00	"	50.0	0.820	108	70-130	4.23	20	
Surrogate: 1,2-Dichloroethane-d4	65		"	62.5		104	70-130			
Surrogate: Toluene-d8	67		"	62.5		107	70-130			
Surrogate: 4-Bromofluorobenzene	63		"	62.5		101	70-130			

Origins Laboratory, Inc.



The results in this report apply to the samples analyzed in accordance with the chain of custody document. This analytical report must be reproduced in its entirety.

Eagle Environmental Consulting, Inc.

8000 W 44th Ave

Wheat Ridge CO 80033

Martin C Eckert III

Project Number: [none]

Project: Noble - Agricultural Products Federal  
#32-17

### Notes and Definitions

U Sample is Non-Detect.

ND Analyte NOT DETECTED at or above the reporting limit

RPD Relative Percent Difference

All soil results are reported at a wet weight basis.

Origins Laboratory, Inc.



*The results in this report apply to the samples analyzed in accordance with the chain of custody document. This analytical report must be reproduced in its entirety.*



March 04, 2020

Eagle Environmental Consulting, Inc.

Martin C Eckert III

8000 W 44th Ave

Wheat Ridge CO 80033

**Project Name - Noble - Agricultural Products  
Federal #32-17**

**Project Number - [none]**

Attached are your analytical results for Noble - Agricultural Products Federal #32-17 received by Origins Laboratory, Inc. February 27, 2020. This project is associated with Origins project number Y002411-01.

The analytical results in the following report were analyzed under the guidelines of EPA Methods. These methods are identified as follows; "SW" are defined in SW-846, "EPA" are defined in 40CFR part 136 and "SM" are defined in the most current revision of Standard Methods For the Examination of Water and Wastewater.

The analytical results apply specifically to the samples and analyses specified per the attached Chain of Custody. As such, this report shall not be reproduced except in full, without the written approval of Origin's laboratory.

Unless otherwise noted, the analytical results for all soil samples are reported on a wet weight basis. All analytical analyses were performed under NELAP guidelines unless noted by a data qualifier.

Any holding time exceedances, deviations from the method specifications or deviations from Origins Laboratory's Standard Operating Procedures are outlined in the case narrative.

Thank you for selecting Origins for your analytical needs. Please contact us with any questions concerning this report, or if we can help with anything at all.

Origins Laboratory, Inc.  
303.433.1322  
o-squad@oelabinc.com



1725 Elk Place, Denver, CO 80211 | Phone: 303.433.1322 | Fax: 303.265.9645

Eagle Environmental Consulting, Inc.

8000 W 44th Ave

Wheat Ridge CO 80033

Martin C Eckert III

Project Number: [none]

Project: Noble - Agricultural Products Federal  
#32-17

## CROSS REFERENCE REPORT

Sample ID	Laboratory ID	Matrix	Date Sampled	Date Received
MW-14@2.5-5'	Y002411-01	Soil	February 27, 2020 11:51	02/27/2020 15:36

Origins Laboratory, Inc.



*The results in this report apply to the samples analyzed in accordance with the chain of custody document. This analytical report must be reproduced in its entirety.*

Jen Pellegrini For Noelle Doyle Mathis, President

Martin C Eckert III  
Project Number: [none]  
Project: Noble - Agricultural Products Federal  
#32-17

# ORIGINS

## LABORATORY, INC

www.originslaboratory.com

page 1 of 1

Client: BAILEY-EM, CONSULTING

Address: 8000 W 44TH AVE

WHEAT RIDGE, CO

Telephone Number: 303-433-0479

Email Address: MICHELLE@EMVTD.CO

Project Manager: MARTIN ECKERT III

Project Name: AGRICULTURAL PRODUCTS

FEDERAL #32-17

Project Number: \_\_\_\_\_

Samples Collected By: KE

Sample ID Description	Date Sampled	Time Sampled	# of Containers	Preservative				Matrix			Analysis				Sample Instructions	
				Unpreserved	HCl	HNO <sub>3</sub>	Other	Groundwater	Soil	Air Summa Canister #	Other	767	LRD	7720		LABVIEW
MW-14 E2.5-5	2-27-20	1151	2	X					X				X	X		1
																2
																3
																4
																5
																6
																7
																8
																9
																10
Relinquished By: <u>RE</u>	Date: <u>2-27-20</u>	Time: <u>1536</u>	Received By: <u>KE</u>	Date: <u>2-27-20</u>	Time: <u>1536</u>	Turnaround Time: Same Day <input type="checkbox"/> 24 Hr <input type="checkbox"/> 48 Hr <input type="checkbox"/> 72 Hr <input checked="" type="checkbox"/> Standard										
Relinquished By: _____	Date: _____	Time: _____	Received By: _____	Date: _____	Time: _____											

BAILEY TO MICHELLE

Temp Received: 7.9

Date Results Needed

BAILEY TO MICHELLE

Origins Laboratory, Inc.

Jeff Pellgrini

*The results in this report apply to the samples analyzed in accordance with the chain of custody document. This analytical report must be reproduced in its entirety.*

Eagle Environmental Consulting, Inc.

8000 W 44th Ave

Wheat Ridge CO 80033

Martin C Eckert III

Project Number: [none]

Project: Noble - Agricultural Products Federal #32-17

Origins Laboratory

F-012207-01-R1

Effective Date: 01/09/12

## Sample Receipt Checklist

Origins Work Order: 4002411

Client: Eagle

Client Project ID: Noble - Agricultural

Checklist Completed by: JP

Shipped Via: HD  
(UPS, FedEx, Hand Delivered, Pick-up, etc.)

Date/time completed: 2/27/20

Airbill #: NA

Matrix(s) Received: (Check all that apply): ☒ Soil/Solid ☐ Water ☐ Other: \_\_\_\_\_ (Describe)

Cooler Number/Temperature: 1 / 29 °C / \_\_\_\_\_ °C / \_\_\_\_\_ °C / \_\_\_\_\_ °C

Thermometer ID: TC3

Requirement Description	Yes	No	N/A	Comments (if any)
If samples require cooling, was the temperature between 0°C to ≤ 6°C <sup>(1)</sup> ?	<input checked="" type="checkbox"/>	<input type="checkbox"/>	<input type="checkbox"/>	
Is there ice present (document if blue ice is used)	<input checked="" type="checkbox"/>	<input type="checkbox"/>	<input type="checkbox"/>	
Are custody seals present on cooler? (if so, document in comments if they are signed and dated, broken or intact)	<input type="checkbox"/>	<input checked="" type="checkbox"/>	<input type="checkbox"/>	
Are custody seals present on each sample container? (if so, document in comments if they are signed and dated, broken or intact)	<input type="checkbox"/>	<input checked="" type="checkbox"/>	<input type="checkbox"/>	
Were all samples received intact <sup>(1)</sup> ?	<input checked="" type="checkbox"/>	<input type="checkbox"/>	<input type="checkbox"/>	
Was adequate sample volume provided <sup>(1)</sup> ?	<input checked="" type="checkbox"/>	<input type="checkbox"/>	<input type="checkbox"/>	
Are short holding time analytes or samples with HTs due within 48 hours present <sup>(1)</sup> ?	<input type="checkbox"/>	<input checked="" type="checkbox"/>	<input type="checkbox"/>	
Is a chain-of-custody (COC) present and filled out completely <sup>(1)</sup> ?	<input checked="" type="checkbox"/>	<input type="checkbox"/>	<input type="checkbox"/>	
Does the COC agree with the number and type of sample bottles received <sup>(1)</sup> ?	<input checked="" type="checkbox"/>	<input type="checkbox"/>	<input type="checkbox"/>	
Do the sample IDs on the bottle labels match the COC <sup>(1)</sup> ?	<input checked="" type="checkbox"/>	<input type="checkbox"/>	<input type="checkbox"/>	
Is the COC properly relinquished by the client with date and time recorded <sup>(1)</sup> ?	<input checked="" type="checkbox"/>	<input type="checkbox"/>	<input type="checkbox"/>	
For volatiles in water – is there headspace (> ¼ inch bubble) present? If yes, contact client and note in narrative.	<input type="checkbox"/>	<input type="checkbox"/>	<input checked="" type="checkbox"/>	
Are samples preserved that require preservation and was it checked <sup>(1)</sup> ? (note ID of confirmation instrument used in comments) / (preservation is not confirmed for subcontracted analyses in order to insure sample integrity)/(pH <2 for samples preserved with HNO <sub>3</sub> , HCL, H <sub>2</sub> SO <sub>4</sub> ) / (pH >10 for samples preserved with NaAsO <sub>2</sub> +NaOH, ZnAc+NaOH)	<input type="checkbox"/>	<input type="checkbox"/>	<input checked="" type="checkbox"/>	
Additional Comments (if any):				

<sup>(1)</sup> If NO, then contact the client before proceeding with analysis and note date/time and person contacted as well as the corrective action to in the additional comments (above) and the case narrative.

Reviewed by (Project Manager) [Signature]

Date/Time Reviewed 2-28-20

Origins Laboratory, Inc.

Jefe Pellegrini

The results in this report apply to the samples analyzed in accordance with the chain of custody document. This analytical report must be reproduced in its entirety.

Eagle Environmental Consulting, Inc.  
8000 W 44th Ave  
Wheat Ridge CO 80033

Martin C Eckert III  
Project Number: [none]  
Project: Noble - Agricultural Products Federal #32-17

MW-14@2.5-5'

2/27/2020 11:51:00AM

Analyte	Result	Reporting Limit	Units	Dilution	Batch	Analyst	Prepared	Analyzed	Notes
---------	--------	-----------------	-------	----------	-------	---------	----------	----------	-------

Origins Laboratory, Inc.  
Y002411-01 (Soil)

## Diesel Range Organics (DRO/TEPH) by EPA 8015D

Diesel (C10-C28)	ND	50.0	mg/kg	1	B0B2803	KDK	02/28/2020	02/28/2020	U
------------------	----	------	-------	---	---------	-----	------------	------------	---

Surrogate: o-Terphenyl	83.5 %	50-150			"	"	"		
------------------------	--------	--------	--	--	---	---	---	--	--

## GBTEX + Naphthalene by EPA 8260D

Gasoline Range Hydrocarbons	ND	5.00	mg/kg	25	B0B2802	KDK	02/28/2020	03/02/2020	U
Benzene	ND	0.050	"	"	"	KDK	"	"	U
Toluene	ND	0.050	"	"	"	KDK	"	"	U
Ethylbenzene	ND	0.050	"	"	"	KDK	"	"	U
Xylenes, total	ND	0.050	"	"	"	KDK	"	"	U
Naphthalene	ND	0.200	"	"	"	KDK	"	"	U

Surrogate: 1,2-Dichloroethane-d4	109 %	70-130			"	"	"		
Surrogate: Toluene-d8	101 %	70-130			"	"	"		
Surrogate: 4-Bromofluorobenzene	99.9 %	70-130			"	"	"		

Origins Laboratory, Inc.



The results in this report apply to the samples analyzed in accordance with the chain of custody document. This analytical report must be reproduced in its entirety.

Eagle Environmental Consulting, Inc.

8000 W 44th Ave

Wheat Ridge CO 80033

Martin C Eckert III

Project Number: [none]

Project: Noble - Agricultural Products Federal  
#32-17

**Volatile Organic Compounds by GC/MS SW846 8260D - Quality Control**  
**Origins Laboratory, Inc.**

Analyte	Result	Reporting Limit	Units	Spike Level	Source Result	%REC	%REC Limits	RPD	RPD Limit	Notes
<b>Batch B0B2802 - EPA 5030 (soil)</b>										
<b>Blank (B0B2802-BLK1)</b>					Prepared: 02/28/2020 Analyzed: 02/28/2020					
Gasoline Range Hydrocarbons	ND	0.200	mg/kg							U
Benzene	ND	0.002	"							U
Toluene	ND	0.002	"							U
Ethylbenzene	ND	0.002	"							U
Xylenes, total	ND	0.002	"							U
Naphthalene	ND	0.008	"							U
Surrogate: 1,2-Dichloroethane-d4	0.13		"	0.125		106	70-130			
Surrogate: Toluene-d8	0.13		"	0.125		101	70-130			
Surrogate: 4-Bromofluorobenzene	0.12		"	0.125		99.1	70-130			

Origins Laboratory, Inc.

The results in this report apply to the samples analyzed in accordance with the chain of custody document. This analytical report must be reproduced in its entirety.



Eagle Environmental Consulting, Inc.

8000 W 44th Ave

Wheat Ridge CO 80033

Martin C Eckert III

Project Number: [none]

Project: Noble - Agricultural Products Federal  
#32-17

**Volatile Organic Compounds by GC/MS SW846 8260D - Quality Control**  
**Origins Laboratory, Inc.**

Analyte	Result	Reporting Limit	Units	Spike Level	Source Result	%REC	%REC Limits	RPD	RPD Limit	Notes
---------	--------	--------------------	-------	----------------	------------------	------	----------------	-----	--------------	-------

Batch B0B2802 - EPA 5030 (soil)

**LCS (B0B2802-BS1)**

Prepared: 02/28/2020 Analyzed: 02/28/2020

Benzene	0.091	0.002	mg/kg	0.100		91.4	70-130			
Toluene	0.092	0.002	"	0.100		92.0	70-130			
Ethylbenzene	0.089	0.002	"	0.100		89.0	70-130			
m,p-Xylene	0.180	0.004	"	0.200		89.8	70-130			
o-Xylene	0.093	0.002	"	0.100		93.4	70-130			
Naphthalene	0.087	0.008	"	0.100		86.8	70-130			
Surrogate: 1,2-Dichloroethane-d4	0.13		"	0.125		104	70-130			
Surrogate: Toluene-d8	0.13		"	0.125		102	70-130			
Surrogate: 4-Bromofluorobenzene	0.12		"	0.125		99.5	70-130			

Origins Laboratory, Inc.



The results in this report apply to the samples analyzed in  
accordance with the chain of custody document. This  
analytical report must be reproduced in its entirety.

Eagle Environmental Consulting, Inc.

8000 W 44th Ave

Wheat Ridge CO 80033

Martin C Eckert III

Project Number: [none]

Project: Noble - Agricultural Products Federal #32-17

**Volatile Organic Compounds by GC/MS SW846 8260D - Quality Control**  
**Origins Laboratory, Inc.**

Analyte	Result	Reporting Limit	Units	Spike Level	Source Result	%REC	%REC Limits	RPD	RPD Limit	Notes
---------	--------	-----------------	-------	-------------	---------------	------	-------------	-----	-----------	-------

Batch B0B2802 - EPA 5030 (soil)

Matrix Spike (B0B2802-MS1)		Source: Y002430-01			Prepared: 02/28/2020 Analyzed: 02/28/2020					
Benzene	0.097	0.002	mg/kg	0.100	ND	97.3	70-130			
Toluene	0.098	0.002	"	0.100	ND	97.9	70-130			
Ethylbenzene	0.096	0.002	"	0.100	ND	96.4	70-130			
m,p-Xylene	0.193	0.004	"	0.200	ND	96.7	70-130			
o-Xylene	0.097	0.002	"	0.100	ND	97.2	70-130			
Naphthalene	0.084	0.008	"	0.100	ND	84.3	70-130			
Surrogate: 1,2-Dichloroethane-d4	0.13		"	0.125		102	70-130			
Surrogate: Toluene-d8	0.13		"	0.125		101	70-130			
Surrogate: 4-Bromofluorobenzene	0.11		"	0.125		87.0	70-130			

Origins Laboratory, Inc.



The results in this report apply to the samples analyzed in accordance with the chain of custody document. This analytical report must be reproduced in its entirety.

Jen Pellegrini For Noelle Doyle Mathis, President

Eagle Environmental Consulting, Inc.

8000 W 44th Ave

Wheat Ridge CO 80033

Martin C Eckert III

Project Number: [none]

Project: Noble - Agricultural Products Federal #32-17

**Volatile Organic Compounds by GC/MS SW846 8260D - Quality Control**  
**Origins Laboratory, Inc.**

Analyte	Result	Reporting Limit	Units	Spike Level	Source Result	%REC	%REC Limits	RPD	RPD Limit	Notes
---------	--------	-----------------	-------	-------------	---------------	------	-------------	-----	-----------	-------

Batch B0B2802 - EPA 5030 (soil)

Matrix Spike Dup (B0B2802-MSD1)		Source: Y002430-01			Prepared: 02/28/2020 Analyzed: 02/28/2020					
Benzene	0.099	0.002	mg/kg	0.100	ND	99.0	70-130	1.73	20	
Toluene	0.089	0.002	"	0.100	ND	89.0	70-130	9.59	20	
Ethylbenzene	0.097	0.002	"	0.100	ND	96.8	70-130	0.435	20	
m,p-Xylene	0.193	0.004	"	0.200	ND	96.4	70-130	0.280	20	
o-Xylene	0.097	0.002	"	0.100	ND	97.2	70-130	0.0206	20	
Naphthalene	0.087	0.008	"	0.100	ND	87.4	70-130	3.66	20	
Surrogate: 1,2-Dichloroethane-d4	0.12		"	0.125		96.3	70-130			
Surrogate: Toluene-d8	0.12		"	0.125		93.4	70-130			
Surrogate: 4-Bromofluorobenzene	0.12		"	0.125		98.8	70-130			

Origins Laboratory, Inc.



The results in this report apply to the samples analyzed in accordance with the chain of custody document. This analytical report must be reproduced in its entirety.

Jen Pellegrini For Noelle Doyle Mathis, President

Eagle Environmental Consulting, Inc.

8000 W 44th Ave

Wheat Ridge CO 80033

Martin C Eckert III

Project Number: [none]

Project: Noble - Agricultural Products Federal  
#32-17

**Volatile Organic Compounds by GC/MS SW846 8260D - Quality Control**  
**Origins Laboratory, Inc.**

Analyte	Result	Reporting Limit	Units	Spike Level	Source Result	%REC	%REC Limits	RPD	RPD Limit	Notes
---------	--------	--------------------	-------	----------------	------------------	------	----------------	-----	--------------	-------

Batch B0B2803 - EPA 3580

Blank (B0B2803-BLK1)

Prepared: 02/28/2020 Analyzed: 02/28/2020

Diesel (C10-C28)	ND	50.0	mg/kg							U
Surrogate: o-Terphenyl	40		"	50.0		80.8	50-150			

Origins Laboratory, Inc.



The results in this report apply to the samples analyzed in  
accordance with the chain of custody document. This  
analytical report must be reproduced in its entirety.

Jen Pellegrini For Noelle Doyle Mathis, President

Eagle Environmental Consulting, Inc.

8000 W 44th Ave

Wheat Ridge CO 80033

Martin C Eckert III

Project Number: [none]

Project: Noble - Agricultural Products Federal  
#32-17

**Extractable Petroleum Hydrocarbons by 8015D - Quality Control**  
**Origins Laboratory, Inc.**

Analyte	Result	Reporting Limit	Units	Spike Level	Source Result	%REC	%REC Limits	RPD	RPD Limit	Notes
---------	--------	--------------------	-------	----------------	------------------	------	----------------	-----	--------------	-------

Batch B0B2803 - EPA 3580

**LCS (B0B2803-BS1)**

Prepared: 02/28/2020 Analyzed: 02/28/2020

Diesel (C10-C28)	937	50.0	mg/kg	1000		93.7	70-130			
Surrogate: o-Terphenyl	57		"	50.0		114	50-150			

Origins Laboratory, Inc.



*The results in this report apply to the samples analyzed in  
accordance with the chain of custody document. This  
analytical report must be reproduced in its entirety.*

Jen Pellegrini For Noelle Doyle Mathis, President

Eagle Environmental Consulting, Inc.

8000 W 44th Ave

Wheat Ridge CO 80033

Martin C Eckert III

Project Number: [none]

Project: Noble - Agricultural Products Federal  
#32-17

**Extractable Petroleum Hydrocarbons by 8015D - Quality Control**  
**Origins Laboratory, Inc.**

Analyte	Result	Reporting Limit	Units	Spike Level	Source Result	%REC	%REC Limits	RPD	RPD Limit	Notes
---------	--------	--------------------	-------	----------------	------------------	------	----------------	-----	--------------	-------

**Batch B0B2803 - EPA 3580**

Matrix Spike (B0B2803-MS1)		Source: Y002430-01			Prepared: 02/28/2020 Analyzed: 02/28/2020					
Diesel (C10-C28)	957	50.0	mg/kg	1000	ND	95.7	70-130			
Surrogate: o-Terphenyl	57		"	50.0		114	50-150			

Origins Laboratory, Inc.



*The results in this report apply to the samples analyzed in  
accordance with the chain of custody document. This  
analytical report must be reproduced in its entirety.*

Jen Pellegrini For Noelle Doyle Mathis, President

Eagle Environmental Consulting, Inc.

8000 W 44th Ave

Wheat Ridge CO 80033

Martin C Eckert III

Project Number: [none]

Project: Noble - Agricultural Products Federal  
#32-17

**Extractable Petroleum Hydrocarbons by 8015D - Quality Control**  
**Origins Laboratory, Inc.**

Analyte	Result	Reporting Limit	Units	Spike Level	Source Result	%REC	%REC Limits	RPD	RPD Limit	Notes
---------	--------	--------------------	-------	----------------	------------------	------	----------------	-----	--------------	-------

Batch B0B2803 - EPA 3580

Matrix Spike Dup (B0B2803-MSD1)		Source: Y002430-01			Prepared: 02/28/2020 Analyzed: 02/28/2020					
Diesel (C10-C28)	972	50.0	mg/kg	1000	ND	97.2	70-130	1.60	35	
Surrogate: o-Terphenyl	55		"	50.0		111	50-150			

Origins Laboratory, Inc.



*The results in this report apply to the samples analyzed in  
accordance with the chain of custody document. This  
analytical report must be reproduced in its entirety.*

Jen Pellegrini For Noelle Doyle Mathis, President

Eagle Environmental Consulting, Inc.

8000 W 44th Ave

Wheat Ridge CO 80033

Martin C Eckert III

Project Number: [none]

Project: Noble - Agricultural Products Federal  
#32-17

### Notes and Definitions

U Sample is Non-Detect.

ND Analyte NOT DETECTED at or above the reporting limit

RPD Relative Percent Difference

All soil results are reported at a wet weight basis.

Origins Laboratory, Inc.



*The results in this report apply to the samples analyzed in accordance with the chain of custody document. This analytical report must be reproduced in its entirety.*

Jen Pellegrini For Noelle Doyle Mathis, President





March 11, 2020

Eagle Environmental Consulting, Inc.

Martin C Eckert III

8000 W 44th Ave

Wheat Ridge CO 80033

**Project Name - Noble - Agricultural Products  
Federal #32-17**

**Project Number - [none]**

Attached are your analytical results for Noble - Agricultural Products Federal #32-17 received by Origins Laboratory, Inc. March 04, 2020. This project is associated with Origins project number Y003068-01.

The analytical results in the following report were analyzed under the guidelines of EPA Methods. These methods are identified as follows; "SW" are defined in SW-846, "EPA" are defined in 40CFR part 136 and "SM" are defined in the most current revision of Standard Methods For the Examination of Water and Wastewater.

The analytical results apply specifically to the samples and analyses specified per the attached Chain of Custody. As such, this report shall not be reproduced except in full, without the written approval of Origin's laboratory.

Unless otherwise noted, the analytical results for all soil samples are reported on a wet weight basis. All analytical analyses were performed under NELAP guidelines unless noted by a data qualifier.

Any holding time exceedances, deviations from the method specifications or deviations from Origins Laboratory's Standard Operating Procedures are outlined in the case narrative.

Thank you for selecting Origins for your analytical needs. Please contact us with any questions concerning this report, or if we can help with anything at all.

Origins Laboratory, Inc.  
303.433.1322  
o-squad@oelabinc.com



1725 Elk Place, Denver, CO 80211 | Phone: 303.433.1322 | Fax: 303.265.9645

Eagle Environmental Consulting, Inc.

8000 W 44th Ave

Wheat Ridge CO 80033

Martin C Eckert III

Project Number: [none]

Project: Noble - Agricultural Products Federal  
#32-17

## CROSS REFERENCE REPORT

Sample ID	Laboratory ID	Matrix	Date Sampled	Date Received
MW-14	Y003068-01	Water	March 4, 2020 11:40	03/04/2020 15:15

Origins Laboratory, Inc.



*The results in this report apply to the samples analyzed in accordance with the chain of custody document. This analytical report must be reproduced in its entirety.*

Jen Pellegrini For Noelle Doyle Mathis, President

Eagle Environmental Consulting, Inc.  
8000 W 44th Ave  
Wheat Ridge CO 80033

Martin C Eckert III  
Project Number: [none]  
Project: Noble - Agricultural Products Federal #32-17

# ORIGINS

LABORATORY, INC

www.originslaboratory.com

page 1 of 1

Client: Eagle Environmental Consulting Project Manager: Martin Eckert III  
Address: 8000 W. 44th Ave Project Name: Agricultural Products Federal #32-17  
Wheat Ridge, CO 80033 Project Number: [blank]  
Telephone Number: (303) 433-0479 Samples Collected By: MM  
Email Address: mo3@eagle-environment.com

1725 Elk Place | Phone: 303.433.1322 | Fax: 303.265.9645

Sample ID Description	Date Sampled	Time Sampled	# of Containers	Preservative				Matrix			Analysis	Sample Instructions	
				Unpreserved	HCl	HNO <sub>3</sub>	Other	Groundwater	Soil	Air Summa Canister #			
MW-14	3/4/20	1140	3		X				X				1
													2
													3
													4
													5
													6
													7
													8
													9
													10

Relinquished By:	Date:	Time:	Received By:	Date:	Time:	Turnaround Time:
Wah	3/4/20	1515	[Signature]	3/4/20	1515	Some Day <input type="checkbox"/> 24 Hr <input type="checkbox"/> 48 Hr <input type="checkbox"/> 72 Hr <input checked="" type="checkbox"/> Standard

Date Results Needed: Noble

Temp Received: 6.6

A bill to nob

Origins Laboratory, Inc.

*Jefe Pellegrini*

The results in this report apply to the samples analyzed in accordance with the chain of custody document. This analytical report must be reproduced in its entirety.

Eagle Environmental Consulting, Inc.

8000 W 44th Ave

Wheat Ridge CO 80033

Martin C Eckert III

Project Number: [none]

Project: Noble - Agricultural Products Federal #32-17

Origins Laboratory

F-012207-01-R1

Effective Date: 01/09/12

## Sample Receipt Checklist

Origins Work Order: 4003068

Client: Eagle Env

Client Project ID: Noble - Agricultural

Checklist Completed by: JP

Shipped Via: HD

(UPS, FedEx, Hand Delivered, Pick-up, etc.)

Date/time completed: 3/4/20

Airbill #: NA

Matrix(s) Received: (Check all that apply): Soil/Solid ☒ Water ☐ Other: (Describe)

Cooler Number/Temperature: 1 / 6.6 °C 1 °C 1 °C 1 °C

Thermometer ID: T023

Requirement Description	Yes	No	N/A	Comments (if any)
If samples require cooling, was the temperature between 0°C to ≤ 6°C <sup>(1)</sup> ?		X		sampled same day
Is there ice present (document if blue ice is used)	X			
Are custody seals present on cooler? (if so, document in comments if they are signed and dated, broken or intact)		X		
Are custody seals present on each sample container? (if so, document in comments if they are signed and dated, broken or intact)		X		
Were all samples received intact <sup>(1)</sup> ?	X			
Was adequate sample volume provided <sup>(1)</sup> ?	X			
Are short holding time analytes or samples with HTs due within 48 hours present <sup>(1)</sup> ?		X		
Is a chain-of-custody (COC) present and filled out completely <sup>(1)</sup> ?	X			
Does the COC agree with the number and type of sample bottles received <sup>(1)</sup> ?	X			
Do the sample IDs on the bottle labels match the COC <sup>(1)</sup> ?	X			
Is the COC properly relinquished by the client with date and time recorded <sup>(1)</sup> ?	X			
For volatiles in water – is there headspace (> ¼ inch bubble) present? If yes, contact client and note in narrative.		X		
Are samples preserved that require preservation and was it checked <sup>(1)</sup> ? (note ID of confirmation instrument used in comments) / (preservation is not confirmed for subcontracted analyses in order to insure sample integrity) / (pH < 2 for samples preserved with HNO <sub>3</sub> , HCL, H <sub>2</sub> SO <sub>4</sub> ) / (pH > 10 for samples preserved with NaAsO <sub>2</sub> +NaOH, ZnAc+NaOH)	X			44
Additional Comments (if any):				

<sup>(1)</sup> If NO, then contact the client before proceeding with analysis and note date/time and person contacted as well as the corrective action to in the additional comments (above) and the case narrative.

Reviewed by (Project Manager)

Date/Time Reviewed 03-06-20

Origins Laboratory, Inc.

*Jefe Pellegrini*

The results in this report apply to the samples analyzed in accordance with the chain of custody document. This analytical report must be reproduced in its entirety.

Eagle Environmental Consulting, Inc.

8000 W 44th Ave

Wheat Ridge CO 80033

Martin C Eckert III

Project Number: [none]

Project: Noble - Agricultural Products Federal #32-17

MW-14

3/4/2020 11:40:00AM

Analyte	Result	Limit	Units	Dilution	Batch	Analyst	Prepared	Analyzed	Notes
---------	--------	-------	-------	----------	-------	---------	----------	----------	-------

Origins Laboratory, Inc.

Y003068-01 (Water)

## BTEX by EPA 8260D

Benzene	ND	1.00	ug/L	1	B0C0503	KDK	03/05/2020	03/06/2020	U
Toluene	ND	1.00	"	"	"	KDK	"	"	U
Ethylbenzene	6.99	1.00	"	"	"	KDK	"	"	
Xylenes, total	13.6	1.00	"	"	"	KDK	"	"	

Surrogate: 1,2-Dichloroethane-d4

105 % 70-130

"

"

"

Surrogate: Toluene-d8

94.6 % 70-130

"

"

"

Surrogate: 4-Bromofluorobenzene

100 % 70-130

"

"

"

Origins Laboratory, Inc.



The results in this report apply to the samples analyzed in accordance with the chain of custody document. This analytical report must be reproduced in its entirety.

Eagle Environmental Consulting, Inc.

8000 W 44th Ave

Wheat Ridge CO 80033

Martin C Eckert III

Project Number: [none]

Project: Noble - Agricultural Products Federal  
#32-17

**Volatile Organic Compounds by GC/MS SW846 8260D - Quality Control**  
**Origins Laboratory, Inc.**

Analyte	Result	Reporting Limit	Units	Spike Level	Source Result	%REC	%REC Limits	RPD	RPD Limit	Notes
---------	--------	--------------------	-------	----------------	------------------	------	----------------	-----	--------------	-------

**Batch B0C0503 - EPA 5030B (Water)**

**Blank (B0C0503-BLK1)**

Prepared: 03/05/2020 Analyzed: 03/06/2020

Benzene	ND	1.00	ug/L							U
Toluene	ND	1.00	"							U
Ethylbenzene	ND	1.00	"							U
Xylenes, total	ND	1.00	"							U
Surrogate: 1,2-Dichloroethane-d4	59		"	62.5	94.4		70-130			
Surrogate: Toluene-d8	59		"	62.5	95.1		70-130			
Surrogate: 4-Bromofluorobenzene	64		"	62.5	102		70-130			

Origins Laboratory, Inc.



*The results in this report apply to the samples analyzed in accordance with the chain of custody document. This analytical report must be reproduced in its entirety.*

Jen Pellegrini For Noelle Doyle Mathis, President

Eagle Environmental Consulting, Inc.

8000 W 44th Ave

Wheat Ridge CO 80033

Martin C Eckert III

Project Number: [none]

Project: Noble - Agricultural Products Federal  
#32-17

**Volatile Organic Compounds by GC/MS SW846 8260D - Quality Control**  
**Origins Laboratory, Inc.**

Analyte	Result	Reporting Limit	Units	Spike Level	Source Result	%REC	%REC Limits	RPD	RPD Limit	Notes
---------	--------	--------------------	-------	----------------	------------------	------	----------------	-----	--------------	-------

Batch B0C0503 - EPA 5030B (Water)

**LCS (B0C0503-BS1)**

Prepared: 03/05/2020 Analyzed: 03/06/2020

Benzene	56.5	1.00	ug/L	50.0	113	70-130
Toluene	56.4	1.00	"	50.0	113	70-130
Ethylbenzene	55.3	1.00	"	50.0	111	70-130
m,p-Xylene	113	2.00	"	100	113	70-130
o-Xylene	59.0	1.00	"	50.0	118	70-130
Surrogate: 1,2-Dichloroethane-d4	63		"	62.5	101	70-130
Surrogate: Toluene-d8	61		"	62.5	98.4	70-130
Surrogate: 4-Bromofluorobenzene	60		"	62.5	96.3	70-130

Origins Laboratory, Inc.

The results in this report apply to the samples analyzed in  
accordance with the chain of custody document. This  
analytical report must be reproduced in its entirety.



Eagle Environmental Consulting, Inc.

8000 W 44th Ave

Wheat Ridge CO 80033

Martin C Eckert III

Project Number: [none]

Project: Noble - Agricultural Products Federal  
#32-17

**Volatile Organic Compounds by GC/MS SW846 8260D - Quality Control**  
**Origins Laboratory, Inc.**

Analyte	Result	Reporting Limit	Units	Spike Level	Source Result	%REC	%REC Limits	RPD	RPD Limit	Notes
---------	--------	-----------------	-------	-------------	---------------	------	-------------	-----	-----------	-------

**Batch B0C0503 - EPA 5030B (Water)**

Matrix Spike (B0C0503-MS1)		Source: Y003067-01			Prepared: 03/05/2020 Analyzed: 03/06/2020					
Benzene	56.3	1.00	ug/L	50.0	ND	113	70-130			
Toluene	55.0	1.00	"	50.0	0.100	110	70-130			
Ethylbenzene	55.8	1.00	"	50.0	0.080	111	70-130			
m,p-Xylene	114	2.00	"	100	0.230	114	70-130			
o-Xylene	58.4	1.00	"	50.0	0.080	117	70-130			
Surrogate: 1,2-Dichloroethane-d4	59		"	62.5		93.8	70-130			
Surrogate: Toluene-d8	61		"	62.5		97.5	70-130			
Surrogate: 4-Bromofluorobenzene	62		"	62.5		98.5	70-130			

Origins Laboratory, Inc.



The results in this report apply to the samples analyzed in accordance with the chain of custody document. This analytical report must be reproduced in its entirety.



Eagle Environmental Consulting, Inc.

8000 W 44th Ave

Wheat Ridge CO 80033

Martin C Eckert III

Project Number: [none]

Project: Noble - Agricultural Products Federal  
#32-17

**Volatile Organic Compounds by GC/MS SW846 8260D - Quality Control**  
**Origins Laboratory, Inc.**

Analyte	Result	Reporting Limit	Units	Spike Level	Source Result	%REC	%REC Limits	RPD	RPD Limit	Notes
---------	--------	--------------------	-------	----------------	------------------	------	----------------	-----	--------------	-------

**Batch B0C0503 - EPA 5030B (Water)**

Matrix Spike Dup (B0C0503-MSD1)		Source: Y003067-01			Prepared: 03/05/2020 Analyzed: 03/06/2020					
Benzene	54.9	1.00	ug/L	50.0	ND	110	70-130	2.45	20	
Toluene	54.4	1.00	"	50.0	0.100	109	70-130	1.21	20	
Ethylbenzene	55.6	1.00	"	50.0	0.080	111	70-130	0.305	20	
m,p-Xylene	114	2.00	"	100	0.230	114	70-130	0.105	20	
o-Xylene	59.5	1.00	"	50.0	0.080	119	70-130	1.82	20	
Surrogate: 1,2-Dichloroethane-d4	59		"	62.5		95.2	70-130			
Surrogate: Toluene-d8	60		"	62.5		96.6	70-130			
Surrogate: 4-Bromofluorobenzene	62		"	62.5		99.5	70-130			

Origins Laboratory, Inc.



The results in this report apply to the samples analyzed in accordance with the chain of custody document. This analytical report must be reproduced in its entirety.

Eagle Environmental Consulting, Inc.

8000 W 44th Ave

Wheat Ridge CO 80033

Martin C Eckert III

Project Number: [none]

Project: Noble - Agricultural Products Federal  
#32-17

### Notes and Definitions

U Sample is Non-Detect.

ND Analyte NOT DETECTED at or above the reporting limit

RPD Relative Percent Difference

All soil results are reported at a wet weight basis.

Origins Laboratory, Inc.



*The results in this report apply to the samples analyzed in accordance with the chain of custody document. This analytical report must be reproduced in its entirety.*