



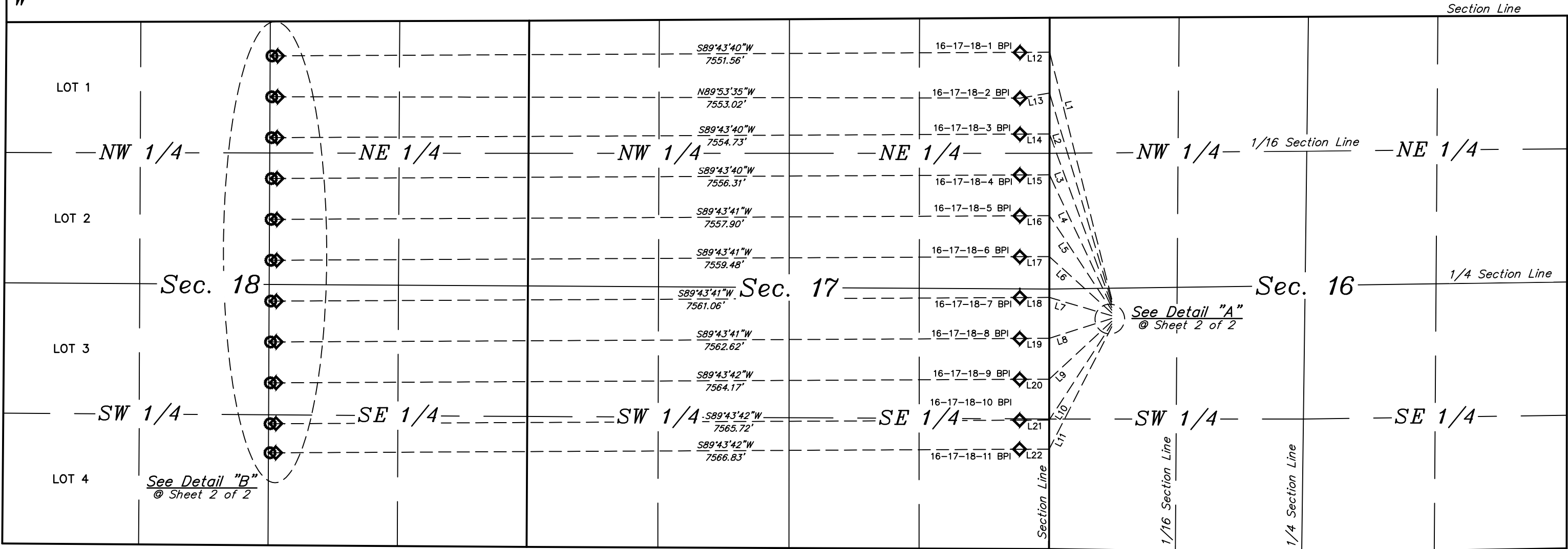
LEGEND:

- = SURFACE LOCATION.
- = TARGET BOTTOM HOLE.
- ◇ = PRODUCTION INTERVAL.
- SL = SURFACE LOCATION.
- TBH = TARGET BOTTOM HOLE.
- BPI = BEG. PROD. INTERVAL.
- EPI = ENDING PROD. INTERVAL.

LINE TABLE			LINE TABLE			LINE TABLE			LINE TABLE		
LINE	DIRECTION	LENGTH	LINE	DIRECTION	LENGTH	LINE	DIRECTION	LENGTH	LINE	DIRECTION	LENGTH
L1	N14°07'06"W	2592.57'	L7	N73°39'16"W	661.63'	L13	S80°16'29"W	304.43'	L19	S89°43'41"W	300.01'
L2	N16°34'26"W	2218.42'	L8	S72°22'41"W	666.62'	L14	S89°43'40"W	300.01'	L20	S89°43'42"W	300.01'
L3	N20°00'58"W	1849.99'	L9	S47°08'52"W	867.24'	L15	S89°43'40"W	300.01'	L21	S89°43'42"W	300.01'
L4	N25°08'23"W	1491.52'	L10	S33°03'01"W	1166.59'	L16	S89°43'41"W	300.01'	L22	S89°43'42"W	300.01'
L5	N33°22'57"W	1152.34'	L11	S27°03'49"W	1399.03'	L17	S89°43'41"W	300.01'			
L6	N47°51'14"W	855.73'	L12	S89°43'40"W	300.01'	L18	S89°43'41"W	300.01'			



R 60 W
R 59 W



Sheet 1 of 2

REV: 2 01-10-20 C.IVIE (SURFACE LOCATION MOVE)

BISON OIL & GAS II

BIG MOUNTAIN VIPER 8-59 16 PAD
NW 1/4 SW 1/4, SECTION 16, T8N, R59W, 6th P.M.
WELD COUNTY, COLORADO

SURVEYED BY	CHAD MEIERS, A.S.	01-10-20	SCALE
DRAWN BY	K.B.	03-19-19	1" = 1000'
MULTI-WELL PLAN		FIGURE #5	



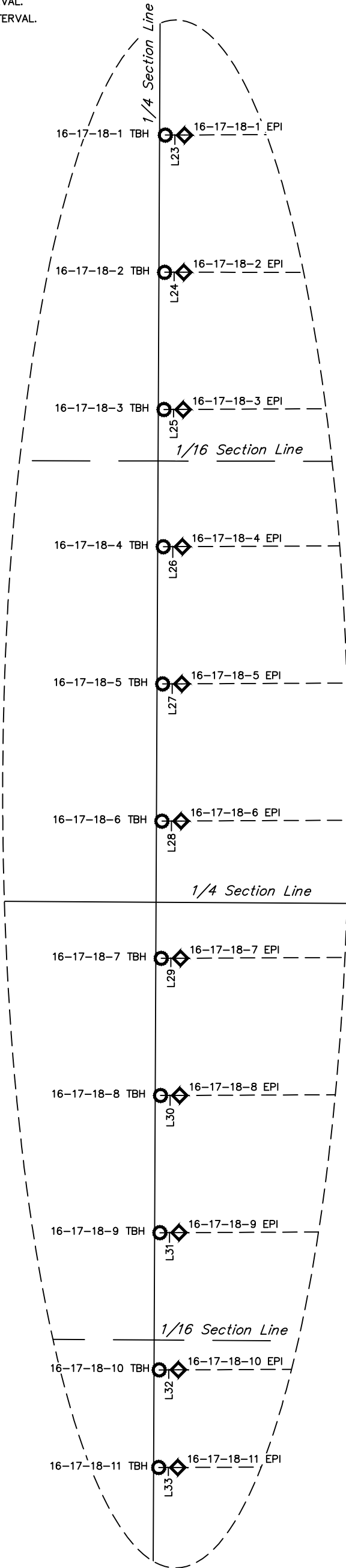
UELS, LLC
Corporate Office * 85 South 200 East
Vernal, UT 84078 * (435) 789-1017



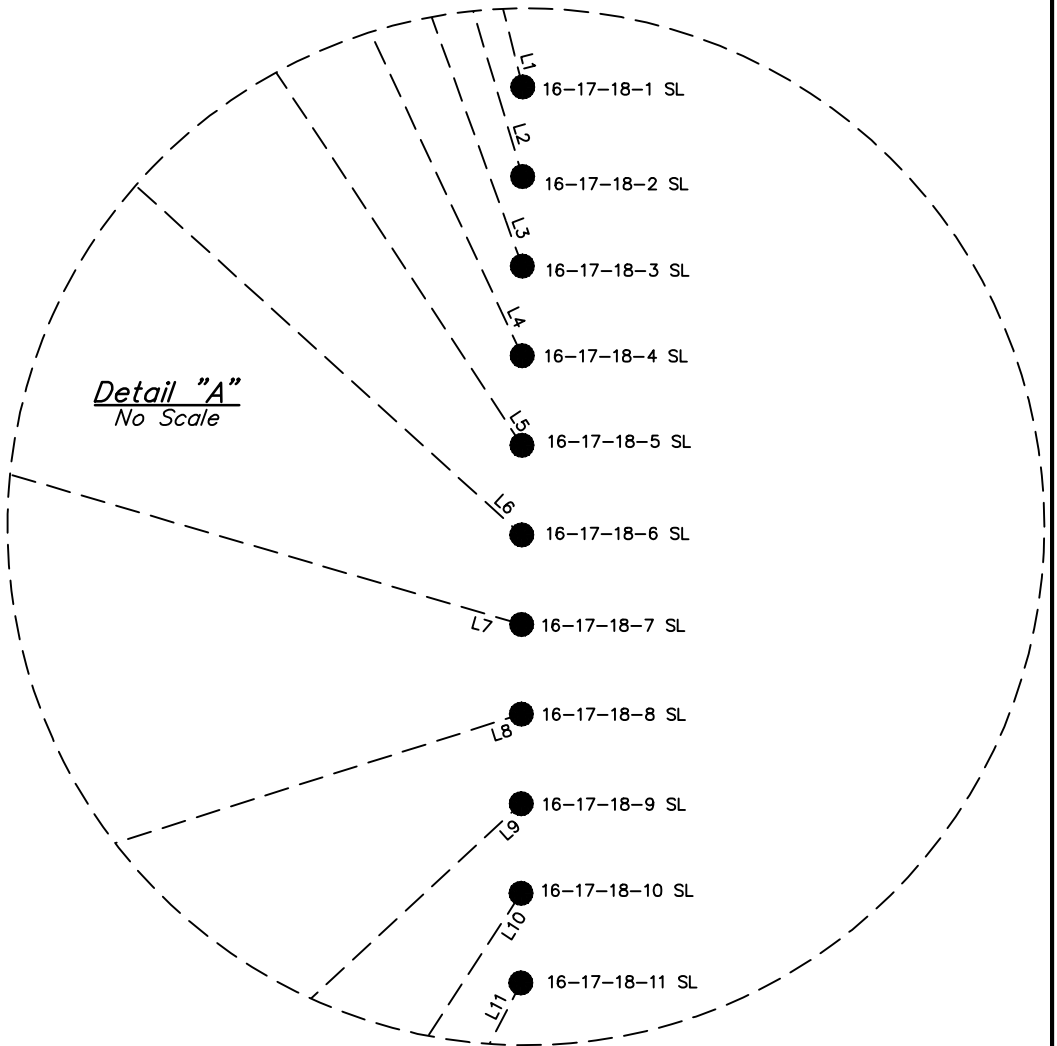
LEGEND:

- = SURFACE LOCATION.
- = TARGET BOTTOM HOLE.
- ◇ = PRODUCTION INTERVAL.
- SL = SURFACE LOCATION.
- TBH = TARGET BOTTOM HOLE.
- BPI = BEG. PROD. INTERVAL.
- EPI = ENDING PROD. INTERVAL.

Detail "B"
No Scale



Detail "A"
No Scale



LINE TABLE		
LINE	DIRECTION	LENGTH
L1	N14°07'06"W	2592.57'
L2	N16°34'26"W	2218.42'
L3	N20°00'58"W	1849.99'
L4	N25°08'23"W	1491.52'
L5	N33°22'57"W	1152.34'
L6	N47°51'14"W	855.73'
L7	N73°39'16"W	661.63'
L8	S72°22'41"W	666.62'
L9	S47°08'52"W	867.24'
L10	S33°03'01"W	1166.59'
L11	S27°03'49"W	1399.03'

LINE TABLE		
LINE	DIRECTION	LENGTH
L23	S89°50'15"W	58.00'
L24	S89°50'15"W	58.00'
L25	S89°50'15"W	58.00'
L26	S89°50'15"W	58.00'
L27	S89°50'15"W	58.00'
L28	S89°50'15"W	58.00'
L29	S89°50'15"W	58.00'
L30	S89°50'15"W	58.00'
L31	S89°50'15"W	58.00'
L32	S89°50'15"W	58.00'
L33	S89°50'15"W	58.00'

BISON OIL & GAS II

BIG MOUNTAIN VIPER 8-59 16 PAD
NW 1/4 SW 1/4, SECTION 16, T8N, R59W, 6th P.M.
WELD COUNTY, COLORADO

SURVEYED BY	CHAD MEIERS, A.S.	01-10-20	SCALE
DRAWN BY	K.B.	03-19-19	1" = 1000'
MULTI-WELL PLAN			FIGURE #5



UELS, LLC
Corporate Office * 85 South 200 East
Vernal, UT 84078 * (435) 789-1017