

## Flowline Integrity Testing Log

Well Name: Martinez #1, Martinez #3, U.P. Sabin Date: 9-5-2018

Flowing Well: \_\_\_\_\_ Pumping Well:

API Number: \_\_\_\_\_

Operator: Prospect Energy

General Weather Conditions: (Circle applicable) Windy \_\_\_\_\_ Cloudy Sunny \_\_\_\_\_  
 <70F \_\_\_\_\_ >70F \_\_\_\_\_ Rain \_\_\_\_\_ Snow \_\_\_\_\_ Calm

Test Start Time: 2:21 pm Test Stop Time: 2:36 pm

Test Start Pressure: 116# Test End Pressure: 113#

Integrity Issue Found Yes: \_\_\_\_\_ No:   
 \*if yes indicate issue found in notes below

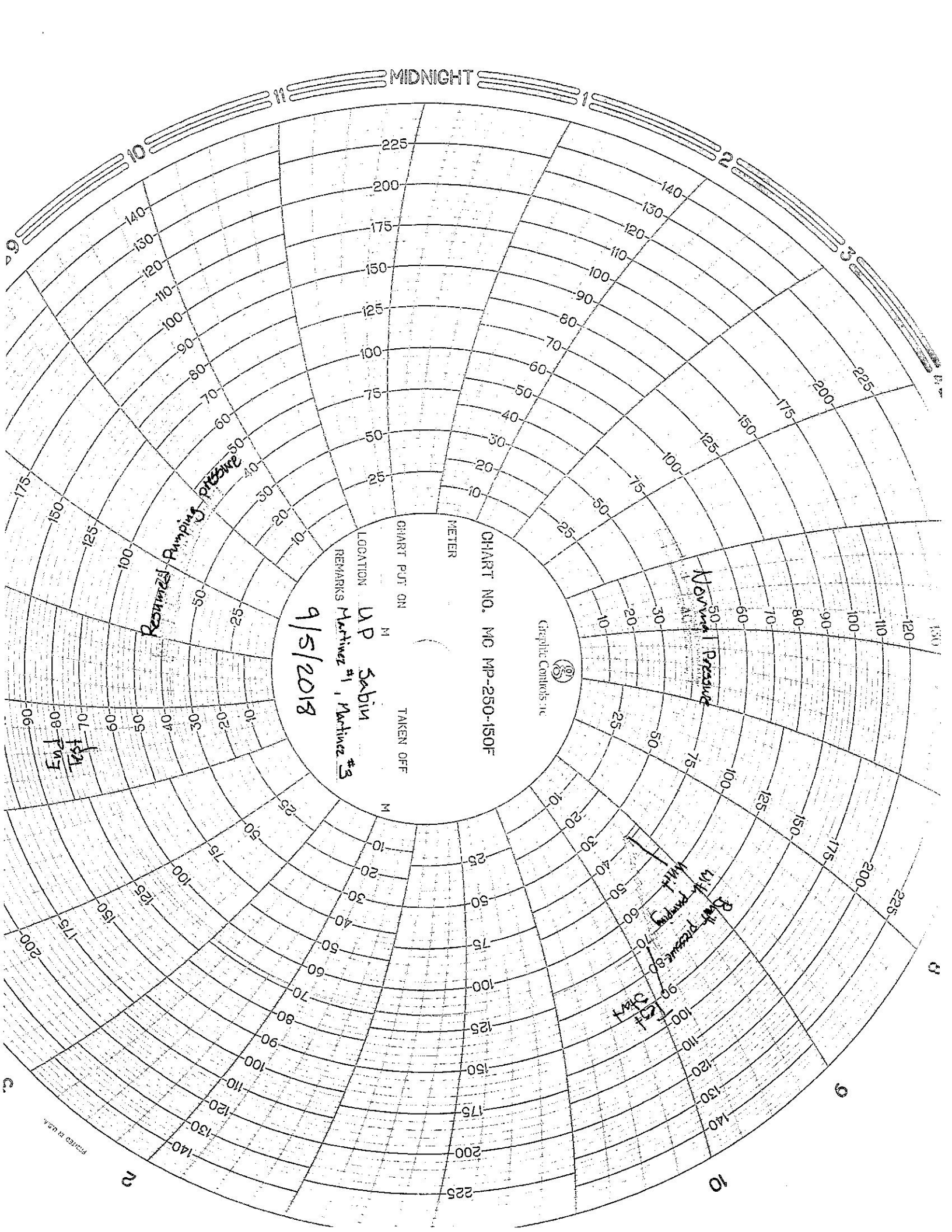
Testing Log

Time	Pressure
0:00	116#
0:05	115#
0:10	115#
0:15	113#

Notes:

Mart. #1, Mart. #3, U.P. Sabin, 2 inch poly flowline

Tested by: Mike Staab, Miles Gracey



MIDNIGHT

Graphic Controls Inc

CHART NO. MC MP-250-150F

METER

CHART PUT ON

TAKEN OFF

LOCATION UP Sabin

REMARKS Martinez #1, Martinez #3

9/5/2018

Residual Pumping Pressure

Novum Pressure

R with pressure 80  
W with pressure 80  
M with pressure 80

1st  
2nd  
3rd

Printed in U.S.A.