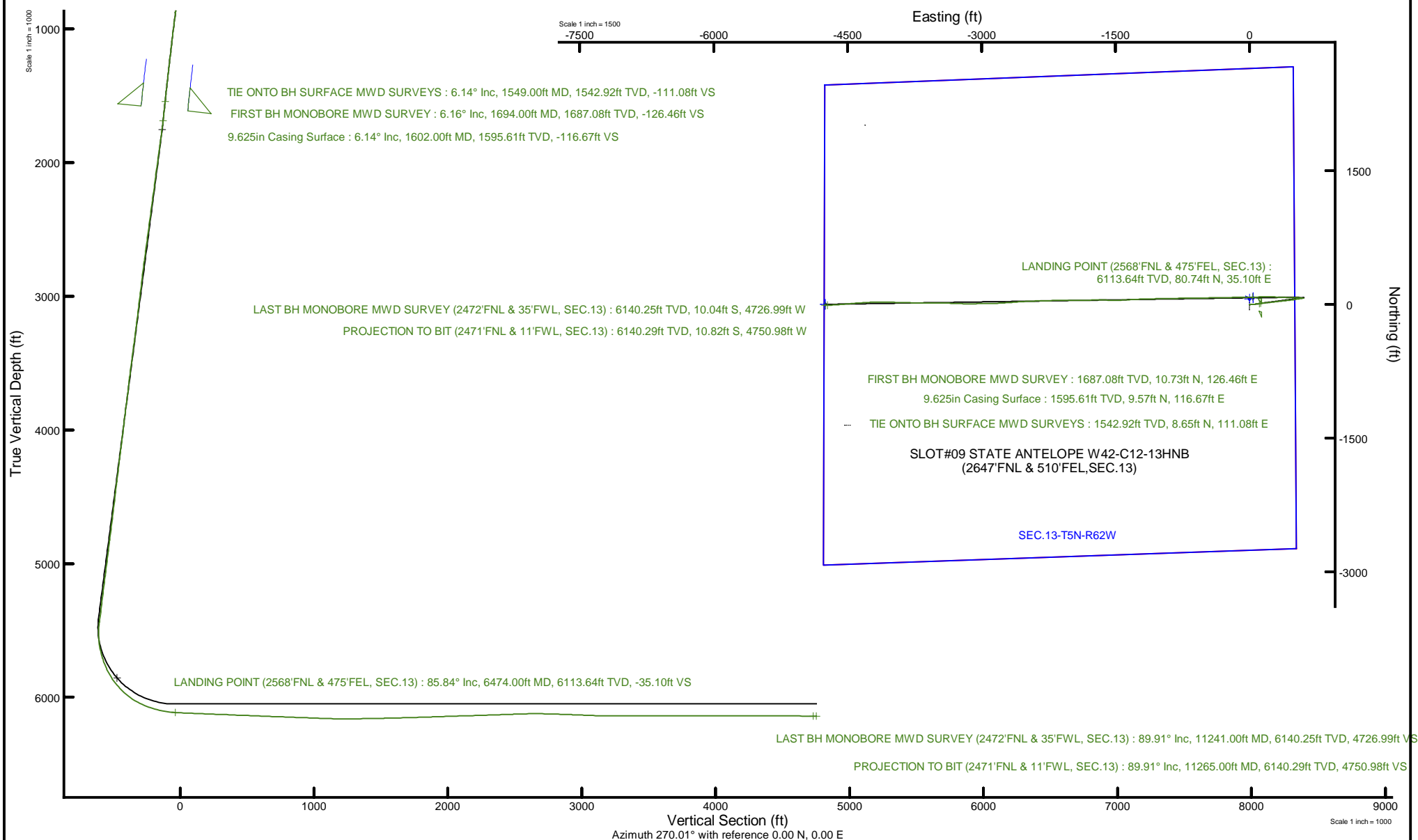


Location:	COLORADO	Slot:	SLOT#09 STATE ANTELOPE W42-C12-13HNB (2647'FNL & 510'FEL, SEC.13)	
Field:	WELD COUNTY (NAD83/TRUE)	Well:	STATE ANTELOPE W42-C12-13HNB	
Facility:	SEC.13-T05N-R62W	Wellbore:	STATE ANTELOPE W42-C12-13HNB PWB	05-123-50293

<p>Plot reference wellpath is STATE ANTELOPE W42-C12-13HNB PWP (REV-C-0)</p> <p>True vertical depths are referenced to RIG (17) (RKB)</p> <p>Reference wellpath measured depths are referenced to RIG (17) (RKB)</p> <p>RIG (17) (RKB) to Mean Sea Level: 4590 feet</p> <p>Mean Sea Level to Ground level (At Slot: SLO7W09 STATE ANTELOPE W42-C12-13HNB (2647FNL & 510FEL,SEC 13): 0 feet</p> <p>Offset wellbore MDs are referenced to each path's default MD datum</p>	<p>Grid System: NAD83 / Lambert Colorado SP, Northern Zone (501), US feet</p> <p>North Reference: True north</p> <p>Scale: True distance</p> <p>Coordinates are in feet referenced to Slot</p> <p>Depths are in feet</p> <p>Created by: mshah101 on 2020/03/04 Database: WellArchitectDR3</p>
--	---





Actual Wellpath Report

STATE ANTELOPE W42-C12-13HNB AWP

Page 1 of 8



REFERENCE WELLPATH IDENTIFICATION			
Operator	BONANZA CREEK ENERGY	Well	STATE ANTELOPE W42-C12-13HNB
Field	WELD COUNTY (NAD83/TRUE)	API/Legal	
Facility	SEC.13-T05N-R62W	Wellbore	STATE ANTELOPE W42-C12-13HNB AWB
Slot	SLOT#09 STATE ANTELOPE W42-C12-13HNB (2647'FNL & 510'FEL,SEC.13)		

REPORT SETUP INFORMATION			
Projection System	NAD83 / Lambert Colorado SP, Northern Zone (501), US feet	Software System	WellArchitect® 6.0
North Reference	True	User	Robiale01
Scale	0.999960	Report Generated	2/26/2020 at 5:45:49 PM
Convergence at slot	0.80° East	Database	WA_DENVER

WELLPATH LOCATION						
	Local coordinates		Grid coordinates		Geographic coordinates	
	North[ft]	East[ft]	Easting[US ft]	Northing[US ft]	Latitude	Longitude
Slot Location	1356.01	4472.71	3344313.33	1391387.28	40°24'4.2156"N	104°15'49.2156"W
Facility Reference Pt			3339859.89	1389969.91	40°23'50.8200"N	104°16'47.0280"W
Field Reference Pt			3224525.77	1254425.87	40°01'44.4000"N	104°41'53.5560"W

WELLPATH DATUM			
Calculation method	Minimum curvature	RIG (17") (RKB) to Facility Vertical Datum	4590.00ft
Horizontal Reference Pt	Slot	RIG (17") (RKB) to Mean Sea Level	4590.00ft
Vertical Reference Pt	RIG (17") (RKB)	RIG (17") (RKB) to Ground Level at Slot (SLOT#09 STATE ANTELOPE W42-C12-13HNB (2647'FNL & 510'FEL,SEC.13))	4590.00ft
MD Reference Pt	RIG (17") (RKB)	Section Origin	N 0.00, E 0.00 ft
Field Vertical Reference	Mean Sea Level	Section Azimuth	270.01°



Actual Wellpath Report
STATE ANTELOPE W42-C12-13HNB AWP
Page 2 of 8



REFERENCE WELLPATH IDENTIFICATION			
Operator	BONANZA CREEK ENERGY	Well	STATE ANTELOPE W42-C12-13HNB
Field	WELD COUNTY (NAD83/TRUE)	API/Legal	
Facility	SEC.13-T05N-R62W	Wellbore	STATE ANTELOPE W42-C12-13HNB AWB
Slot	SLOT#09 STATE ANTELOPE W42-C12-13HNB (2647'FNL & 510'FEL,SEC.13)		

WELLPATH DATA (131 stations) † = interpolated, ‡ = extrapolated station										
MD [ft]	Inclination [°]	Azimuth [°]	TVD [ft]	Vert Sect [ft]	North [ft]	East [ft]	Latitude	Longitude	DLS [°/100ft]	Comments
0.00†	0.000	123.610	0.00	0.00	0.00	0.00	40°24'4.2156"N	104°15'49.2156"W	0.00	
17.00	0.000	123.610	17.00	0.00	0.00	0.00	40°24'4.2156"N	104°15'49.2156"W	0.00	
123.00	0.400	123.610	123.00	-0.31	-0.20	0.31	40°24'4.2136"N	104°15'49.2116"W	0.38	
216.00	0.470	125.150	216.00	-0.89	-0.60	0.89	40°24'4.2096"N	104°15'49.2041"W	0.08	
308.00	0.630	145.800	307.99	-1.48	-1.24	1.48	40°24'4.2033"N	104°15'49.1964"W	0.27	
401.00	0.330	155.880	400.99	-1.88	-1.91	1.88	40°24'4.1968"N	104°15'49.1913"W	0.33	
490.00	0.910	117.820	489.98	-2.61	-2.47	2.61	40°24'4.1912"N	104°15'49.1819"W	0.77	
579.00	2.500	83.070	578.94	-5.16	-2.57	5.16	40°24'4.1902"N	104°15'49.1489"W	2.05	
666.00	4.570	86.670	665.77	-10.51	-2.14	10.51	40°24'4.1945"N	104°15'49.0798"W	2.39	
755.00	6.680	87.340	754.34	-19.22	-1.69	19.22	40°24'4.1989"N	104°15'48.9672"W	2.37	
843.00	7.250	86.900	841.69	-29.88	-1.15	29.88	40°24'4.2042"N	104°15'48.8294"W	0.65	
931.00	7.090	86.430	929.00	-40.84	-0.51	40.84	40°24'4.2105"N	104°15'48.6877"W	0.19	
1020.00	6.740	84.080	1017.35	-51.52	0.37	51.52	40°24'4.2192"N	104°15'48.5497"W	0.51	
1109.00	6.730	82.990	1105.74	-61.89	1.54	61.89	40°24'4.2308"N	104°15'48.4157"W	0.14	
1198.00	6.660	81.520	1194.13	-72.17	2.94	72.17	40°24'4.2446"N	104°15'48.2828"W	0.21	
1285.00	6.860	81.640	1280.53	-82.30	4.44	82.30	40°24'4.2595"N	104°15'48.1518"W	0.23	
1373.00	6.460	83.250	1367.93	-92.41	5.79	92.41	40°24'4.2728"N	104°15'48.0211"W	0.50	
1461.00	6.020	80.940	1455.41	-101.89	7.09	101.89	40°24'4.2857"N	104°15'47.8986"W	0.58	
1549.00	6.140	79.790	1542.92	-111.08	8.65	111.08	40°24'4.3011"N	104°15'47.7799"W	0.19	TIE ONTO BH SURFACE MWD SURVEYS
1694.00	6.160	84.860	1687.08	-126.46	10.73	126.46	40°24'4.3216"N	104°15'47.5811"W	0.37	FIRST BH MONOBORE MWD SURVEY
1783.00	8.030	82.590	1775.40	-137.38	11.96	137.38	40°24'4.3337"N	104°15'47.4399"W	2.12	
1870.00	7.790	81.750	1861.57	-149.24	13.59	149.24	40°24'4.3498"N	104°15'47.2866"W	0.31	
1958.00	7.800	83.360	1948.76	-161.07	15.13	161.07	40°24'4.3651"N	104°15'47.1336"W	0.25	
2045.00	7.840	84.160	2034.95	-172.84	16.42	172.84	40°24'4.3778"N	104°15'46.9815"W	0.13	
2133.00	7.480	82.780	2122.16	-184.49	17.75	184.49	40°24'4.3910"N	104°15'46.8309"W	0.46	
2222.00	7.720	87.210	2210.38	-196.21	18.77	196.21	40°24'4.4010"N	104°15'46.6795"W	0.71	
2308.00	7.500	82.450	2295.63	-207.54	19.79	207.54	40°24'4.4111"N	104°15'46.5330"W	0.78	
2397.00	7.710	84.750	2383.84	-219.25	21.10	219.25	40°24'4.4241"N	104°15'46.3817"W	0.42	
2485.00	7.780	83.640	2471.04	-231.04	22.30	231.05	40°24'4.4359"N	104°15'46.2292"W	0.19	
2574.00	7.820	82.700	2559.22	-243.04	23.73	243.04	40°24'4.4501"N	104°15'46.0742"W	0.15	



Actual Wellpath Report
STATE ANTELOPE W42-C12-13HNB AWP
Page 3 of 8



REFERENCE WELLPATH IDENTIFICATION			
Operator	BONANZA CREEK ENERGY	Well	STATE ANTELOPE W42-C12-13HNB
Field	WELD COUNTY (NAD83/TRUE)	API/Legal	
Facility	SEC.13-T05N-R62W	Wellbore	STATE ANTELOPE W42-C12-13HNB AWB
Slot	SLOT#09 STATE ANTELOPE W42-C12-13HNB (2647'FNL & 510'FEL,SEC.13)		

WELLPATH DATA (131 stations)										
MD [ft]	Inclination [°]	Azimuth [°]	TVD [ft]	Vert Sect [ft]	North [ft]	East [ft]	Latitude	Longitude	DLS [°/100ft]	Comments
2661.00	7.830	83.780	2645.41	-254.80	25.13	254.80	40°24'4.4639"N	104°15'45.9222"W	0.17	
2749.00	7.180	84.950	2732.65	-266.23	26.26	266.24	40°24'4.4751"N	104°15'45.7743"W	0.76	
2838.00	7.200	82.690	2820.95	-277.31	27.46	277.31	40°24'4.4869"N	104°15'45.6312"W	0.32	
2927.00	6.800	85.290	2909.29	-288.09	28.60	288.09	40°24'4.4982"N	104°15'45.4918"W	0.57	
3016.00	7.220	84.190	2997.62	-298.90	29.60	298.91	40°24'4.5081"N	104°15'45.3520"W	0.50	
3103.00	6.880	80.790	3083.97	-309.49	30.99	309.49	40°24'4.5218"N	104°15'45.2152"W	0.62	
3191.00	7.110	79.940	3171.31	-320.05	32.78	320.06	40°24'4.5395"N	104°15'45.0787"W	0.29	
3279.00	7.570	85.180	3258.59	-331.19	34.22	331.19	40°24'4.5537"N	104°15'44.9347"W	0.92	
3367.00	7.340	83.180	3345.85	-342.55	35.38	342.55	40°24'4.5651"N	104°15'44.7879"W	0.39	
3454.00	7.590	84.400	3432.11	-353.78	36.60	353.79	40°24'4.5772"N	104°15'44.6427"W	0.34	
3541.00	7.440	84.350	3518.36	-365.11	37.71	365.11	40°24'4.5882"N	104°15'44.4963"W	0.17	
3629.00	7.030	84.480	3605.66	-376.14	38.79	376.14	40°24'4.5989"N	104°15'44.3537"W	0.47	
3717.00	7.010	84.910	3693.00	-386.85	39.78	386.85	40°24'4.6087"N	104°15'44.2153"W	0.06	
3806.00	7.090	84.060	3781.33	-397.72	40.84	397.72	40°24'4.6191"N	104°15'44.0748"W	0.15	
3894.00	6.930	85.140	3868.67	-408.41	41.85	408.41	40°24'4.6291"N	104°15'43.9366"W	0.24	
3983.00	7.210	83.540	3957.00	-419.31	42.93	419.31	40°24'4.6398"N	104°15'43.7957"W	0.38	
4072.00	7.010	83.700	4045.31	-430.26	44.15	430.26	40°24'4.6519"N	104°15'43.6542"W	0.23	
4160.00	7.040	82.120	4132.65	-440.94	45.48	440.94	40°24'4.6650"N	104°15'43.5162"W	0.22	
4248.00	7.070	83.610	4219.98	-451.66	46.83	451.66	40°24'4.6783"N	104°15'43.3776"W	0.21	
4337.00	6.870	84.980	4308.33	-462.41	47.90	462.41	40°24'4.6889"N	104°15'43.2387"W	0.29	
4424.00	7.250	81.320	4394.67	-473.02	49.18	473.02	40°24'4.7016"N	104°15'43.1015"W	0.68	
4511.00	7.020	81.260	4480.99	-483.70	50.82	483.70	40°24'4.7177"N	104°15'42.9635"W	0.26	
4600.00	6.950	80.290	4569.33	-494.38	52.56	494.38	40°24'4.7349"N	104°15'42.8254"W	0.15	
4687.00	6.820	81.220	4655.71	-504.67	54.23	504.68	40°24'4.7514"N	104°15'42.6923"W	0.20	
4775.00	7.190	81.020	4743.05	-515.28	55.89	515.28	40°24'4.7678"N	104°15'42.5553"W	0.42	
4863.00	7.190	80.510	4830.36	-526.15	57.66	526.15	40°24'4.7853"N	104°15'42.4147"W	0.07	
4950.00	7.260	81.880	4916.67	-536.96	59.33	536.96	40°24'4.8018"N	104°15'42.2750"W	0.21	
5038.00	7.450	80.930	5003.94	-548.10	61.02	548.10	40°24'4.8185"N	104°15'42.1310"W	0.26	
5125.00	7.180	81.120	5090.23	-559.04	62.74	559.04	40°24'4.8355"N	104°15'41.9896"W	0.31	
5212.00	7.050	81.880	5176.56	-569.70	64.34	569.70	40°24'4.8513"N	104°15'41.8518"W	0.18	



Actual Wellpath Report
STATE ANTELOPE W42-C12-13HNB AWP
Page 4 of 8



REFERENCE WELLPATH IDENTIFICATION			
Operator	BONANZA CREEK ENERGY	Well	STATE ANTELOPE W42-C12-13HNB
Field	WELD COUNTY (NAD83/TRUE)	API/Legal	
Facility	SEC.13-T05N-R62W	Wellbore	STATE ANTELOPE W42-C12-13HNB AWB
Slot	SLOT#09 STATE ANTELOPE W42-C12-13HNB (2647'FNL & 510'FEL,SEC.13)		

WELLPATH DATA (131 stations) † = interpolated, ‡ = extrapolated station										
MD [ft]	Inclination [°]	Azimuth [°]	TVD [ft]	Vert Sect [ft]	North [ft]	East [ft]	Latitude	Longitude	DLS [°/100ft]	Comments
5301.00	7.080	81.870	5264.89	-580.53	65.88	580.54	40°24'4.8666"N	104°15'41.7118"W	0.03	
5390.00	7.140	81.650	5353.20	-591.43	67.46	591.44	40°24'4.8822"N	104°15'41.5709"W	0.07	
5479.00	7.370	80.390	5441.49	-602.53	69.22	602.54	40°24'4.8995"N	104°15'41.4274"W	0.31	
5567.00	0.310	266.340	5529.26	-607.87	70.15	607.88	40°24'4.9087"N	104°15'41.3584"W	8.73	
5655.00	9.760	267.770	5616.82	-600.16	69.84	600.17	40°24'4.9057"N	104°15'41.4580"W	10.74	
5744.00	17.110	279.790	5703.34	-579.69	71.78	579.70	40°24'4.9248"N	104°15'41.7226"W	8.79	
5832.00	24.070	271.470	5785.69	-548.95	74.44	548.96	40°24'4.9512"N	104°15'42.1200"W	8.56	
5919.00	34.250	270.930	5861.56	-506.62	75.30	506.63	40°24'4.9596"N	104°15'42.6671"W	11.70	
6008.00	42.730	271.540	5931.16	-451.30	76.52	451.30	40°24'4.9717"N	104°15'43.3822"W	9.54	
6097.00	52.330	271.690	5991.18	-385.75	78.37	385.76	40°24'4.9900"N	104°15'44.2294"W	10.79	
6186.00	62.120	273.020	6039.30	-311.08	81.49	311.08	40°24'5.0208"N	104°15'45.1946"W	11.07	
6274.00	71.200	271.620	6074.13	-230.43	84.72	230.44	40°24'5.0528"N	104°15'46.2370"W	10.42	
6361.00	76.990	267.670	6097.97	-146.82	84.16	146.82	40°24'5.0473"N	104°15'47.3178"W	7.96	
6449.00	85.100	268.560	6111.66	-60.01	81.32	60.02	40°24'5.0191"N	104°15'48.4398"W	9.27	
6474.00†	85.836	268.780	6113.64	-35.10	80.74	35.10	40°24'5.0134"N	104°15'48.7619"W	3.07	LANDING POINT (2568'FNL & 475'FEL, SEC.13)
6538.00	87.720	269.340	6117.23	28.79	79.69	-28.78	40°24'5.0031"N	104°15'49.5877"W	3.07	
6626.00	87.810	269.310	6120.66	116.72	78.65	-116.71	40°24'4.9928"N	104°15'50.7242"W	0.11	
6714.00	87.570	269.020	6124.21	204.64	77.37	-204.63	40°24'4.9801"N	104°15'51.8606"W	0.43	
6802.00	87.690	269.060	6127.85	292.55	75.90	-292.54	40°24'4.9656"N	104°15'52.9969"W	0.14	
6890.00	87.570	268.460	6131.49	380.45	74.00	-380.45	40°24'4.9468"N	104°15'54.1331"W	0.69	
6979.00	87.690	269.420	6135.17	469.36	72.35	-469.35	40°24'4.9305"N	104°15'55.2823"W	1.09	
7068.00	87.660	268.940	6138.78	558.28	71.08	-558.27	40°24'4.9179"N	104°15'56.4316"W	0.54	
7157.00	87.780	268.900	6142.32	647.19	69.40	-647.18	40°24'4.9013"N	104°15'57.5809"W	0.14	
7244.00	87.970	269.480	6145.55	734.12	68.17	-734.12	40°24'4.8892"N	104°15'58.7045"W	0.70	
7333.00	87.940	269.330	6148.72	823.06	67.25	-823.05	40°24'4.8800"N	104°15'59.8541"W	0.17	
7420.00	87.880	268.850	6151.90	909.99	65.87	-909.99	40°24'4.8663"N	104°16'0.9777"W	0.56	
7508.00	87.720	268.490	6155.27	997.90	63.83	-997.90	40°24'4.8461"N	104°16'2.1140"W	0.45	
7596.00	87.810	268.550	6158.71	1085.81	61.56	-1085.80	40°24'4.8236"N	104°16'3.2503"W	0.12	
7684.00	89.660	268.970	6160.65	1173.76	59.65	-1173.75	40°24'4.8048"N	104°16'4.3871"W	2.16	
7771.00	89.940	267.420	6160.95	1260.71	56.91	-1260.71	40°24'4.7777"N	104°16'5.5110"W	1.81	



Actual Wellpath Report
STATE ANTELOPE W42-C12-13HNB AWP
Page 5 of 8



REFERENCE WELLPATH IDENTIFICATION			
Operator	BONANZA CREEK ENERGY	Well	STATE ANTELOPE W42-C12-13HNB
Field	WELD COUNTY (NAD83/TRUE)	API/Legal	
Facility	SEC.13-T05N-R62W	Wellbore	STATE ANTELOPE W42-C12-13HNB AWB
Slot	SLOT#09 STATE ANTELOPE W42-C12-13HNB (2647'FNL & 510'FEL,SEC.13)		

WELLPATH DATA (131 stations)										
MD [ft]	Inclination [°]	Azimuth [°]	TVD [ft]	Vert Sect [ft]	North [ft]	East [ft]	Latitude	Longitude	DLS [°/100ft]	Comments
7858.00	91.050	266.470	6160.20	1347.58	52.28	-1347.58	40°24'4.7318"N	104°16'6.6339"W	1.68	
7946.00	91.080	267.290	6158.56	1435.44	47.49	-1435.43	40°24'4.6844"N	104°16'7.7695"W	0.93	
8034.00	91.200	270.110	6156.81	1523.39	45.49	-1523.38	40°24'4.6647"N	104°16'8.9063"W	3.21	
8123.00	91.540	273.100	6154.69	1612.32	47.98	-1612.31	40°24'4.6892"N	104°16'10.0557"W	3.38	
8212.00	91.780	268.800	6152.11	1701.25	49.46	-1701.24	40°24'4.7037"N	104°16'11.2052"W	4.84	
8299.00	91.660	268.510	6149.49	1788.18	47.42	-1788.18	40°24'4.6835"N	104°16'12.3289"W	0.36	
8387.00	91.820	270.200	6146.82	1876.13	46.43	-1876.13	40°24'4.6737"N	104°16'13.4657"W	1.93	
8475.00	91.790	270.600	6144.05	1964.09	47.04	-1964.08	40°24'4.6797"N	104°16'14.6026"W	0.46	
8562.00	91.910	269.590	6141.24	2051.04	47.18	-2051.04	40°24'4.6810"N	104°16'15.7265"W	1.17	
8649.00	91.850	268.390	6138.39	2137.98	45.65	-2137.97	40°24'4.6658"N	104°16'16.8502"W	1.38	
8736.00	91.820	267.410	6135.60	2224.87	42.47	-2224.87	40°24'4.6342"N	104°16'17.9734"W	1.13	
8825.00	91.910	269.030	6132.71	2313.78	39.70	-2313.78	40°24'4.6069"N	104°16'19.1226"W	1.82	
8913.00	92.000	268.250	6129.70	2401.70	37.62	-2401.70	40°24'4.5861"N	104°16'20.2591"W	0.89	
9001.00	91.970	267.370	6126.65	2489.59	34.25	-2489.58	40°24'4.5529"N	104°16'21.3950"W	1.00	
9090.00	91.630	265.900	6123.86	2578.39	29.03	-2578.38	40°24'4.5012"N	104°16'22.5428"W	1.69	
9179.00	89.570	265.290	6122.93	2667.11	22.20	-2667.11	40°24'4.4335"N	104°16'23.6896"W	2.41	
9266.00	88.430	266.240	6124.45	2753.86	15.77	-2753.86	40°24'4.3700"N	104°16'24.8109"W	1.71	
9354.00	88.060	268.980	6127.14	2841.73	12.11	-2841.73	40°24'4.3336"N	104°16'25.9467"W	3.14	
9442.00	87.940	268.830	6130.21	2929.66	10.43	-2929.66	40°24'4.3169"N	104°16'27.0832"W	0.22	
9531.00	87.110	268.480	6134.06	3018.55	8.34	-3018.55	40°24'4.2962"N	104°16'28.2322"W	1.01	
9619.00	88.800	269.290	6137.20	3106.48	6.63	-3106.48	40°24'4.2792"N	104°16'29.3687"W	2.13	
9708.00	89.970	271.410	6138.15	3195.46	7.17	-3195.46	40°24'4.2844"N	104°16'30.5189"W	2.72	
9797.00	89.970	272.300	6138.20	3284.42	10.05	-3284.42	40°24'4.3128"N	104°16'31.6686"W	1.00	
9885.00	89.970	271.650	6138.24	3372.36	13.09	-3372.36	40°24'4.3426"N	104°16'32.8054"W	0.74	
9974.00	89.970	271.330	6138.29	3461.33	15.40	-3461.33	40°24'4.3654"N	104°16'33.9554"W	0.36	
10062.00	89.850	269.420	6138.43	3549.33	15.98	-3549.33	40°24'4.3709"N	104°16'35.0928"W	2.17	
10150.00	89.820	269.890	6138.68	3637.33	15.45	-3637.32	40°24'4.3656"N	104°16'36.2302"W	0.54	
10240.00	89.880	270.950	6138.92	3727.32	16.11	-3727.32	40°24'4.3720"N	104°16'37.3935"W	1.18	
10327.00	89.750	271.790	6139.20	3814.30	18.19	-3814.29	40°24'4.3924"N	104°16'38.5177"W	0.98	
10416.00	90.000	271.560	6139.39	3903.26	20.79	-3903.26	40°24'4.4180"N	104°16'39.6675"W	0.38	



Actual Wellpath Report
STATE ANTELOPE W42-C12-13HNB AWP
Page 6 of 8



REFERENCE WELLPATH IDENTIFICATION			
Operator	BONANZA CREEK ENERGY	Well	STATE ANTELOPE W42-C12-13HNB
Field	WELD COUNTY (NAD83/TRUE)	API/Legal	
Facility	SEC.13-T05N-R62W	Wellbore	STATE ANTELOPE W42-C12-13HNB AWB
Slot	SLOT#09 STATE ANTELOPE W42-C12-13HNB (2647'FNL & 510'FEL,SEC.13)		

WELLPATH DATA (131 stations) † = interpolated, ‡ = extrapolated station										
MD [ft]	Inclination [°]	Azimuth [°]	TVD [ft]	Vert Sect [ft]	North [ft]	East [ft]	Latitude	Longitude	DLS [°/100ft]	Comments
10505.00	90.000	271.330	6139.39	3992.23	23.03	-3992.23	40°24'4.4400"N	104°16'40.8176"W	0.26	
10595.00	89.850	270.870	6139.51	4082.21	24.76	-4082.21	40°24'4.4569"N	104°16'41.9806"W	0.54	
10683.00	90.060	269.510	6139.58	4170.21	25.05	-4170.21	40°24'4.4597"N	104°16'43.1181"W	1.56	
10771.00	89.910	266.760	6139.60	4258.15	22.19	-4258.15	40°24'4.4312"N	104°16'44.2548"W	3.13	
10858.00	89.720	266.330	6139.88	4345.00	16.94	-4344.99	40°24'4.3793"N	104°16'45.3773"W	0.54	
10945.00	90.120	265.470	6140.01	4431.77	10.72	-4431.77	40°24'4.3176"N	104°16'46.4989"W	1.09	
11032.00	90.060	264.520	6139.87	4518.44	3.13	-4518.44	40°24'4.2425"N	104°16'47.6191"W	1.09	
11119.00	89.780	266.230	6139.99	4605.15	-3.88	-4605.15	40°24'4.1730"N	104°16'48.7399"W	1.99	
11207.00	89.940	267.440	6140.20	4693.01	-8.74	-4693.01	40°24'4.1248"N	104°16'49.8756"W	1.39	
11241.00	89.910	268.160	6140.25	4726.99	-10.04	-4726.99	40°24'4.1119"N	104°16'50.3147"W	2.12	LAST BH MONOBORE MWD SURVEY (2472'FNL & 35'FWL, SEC.13)
11265.00‡	89.910	268.160	6140.29	4750.98	-10.82	-4750.98	40°24'4.1042"N	104°16'50.6248"W	0.00	PROJECTION TO BIT (2471'FNL & 11'FWL, SEC.13)

HOLE & CASING SECTIONS - Ref Wellbore: STATE ANTELOPE W42-C12-13HNB AWB Ref Wellpath: STATE ANTELOPE W42-C12-13HNB AWP									
String/Diameter	Start MD [ft]	End MD [ft]	Interval [ft]	Start TVD [ft]	End TVD [ft]	Start N/S [ft]	Start E/W [ft]	End N/S [ft]	End E/W [ft]
13.5in Open Hole	17.00	1612.00	1595.00	17.00	1605.56	0.00	0.00	9.72	117.73
9.625in Casing Surface	17.00	1602.00	1585.00	17.00	1595.61	0.00	0.00	9.57	116.67
8.5in Open Hole	1612.00	11265.00	9653.00	1605.56	6140.29	9.72	117.73	-10.82	-4750.98



Actual Wellpath Report

STATE ANTELOPE W42-C12-13HNB AWP

Page 7 of 8



REFERENCE WELLPATH IDENTIFICATION			
Operator	BONANZA CREEK ENERGY	Well	STATE ANTELOPE W42-C12-13HNB
Field	WELD COUNTY (NAD83/TRUE)	API/Legal	
Facility	SEC.13-T05N-R62W	Wellbore	STATE ANTELOPE W42-C12-13HNB AWB
Slot	SLOT#09 STATE ANTELOPE W42-C12-13HNB (2647'FNL & 510'FEL,SEC.13)		

TARGETS								
Name	TVD [ft]	North [ft]	East [ft]	Grid East [US ft]	Grid North [US ft]	Latitude	Longitude	Shape
SEC.13-T5N-R62W	0.00	60.11	-0.28	3344312.21	1391447.38	40°24'4.8096"N	104°15'49.2192"W	polygon
	2D Polygon: dimensions not calculated							
STATE ANTELOPE W42-C12-13HNB BHL (2460'FNL & 10'FWL,SEC.13)	6050.00	0.46	-4751.78	3339562.20	1391321.49	40°24'4.2156"N	104°16'50.6352"W	point
STATE ANTELOPE W42-C12-13HNB BHL REV-1 (2460'FNL & 10'FWL,SEC.13)	6050.00	0.46	-4751.78	3339562.20	1391321.49	40°24'4.2156"N	104°16'50.6352"W	point
STATE ANTELOPE W42-C12-13HNB LP (2574'FNL & 470'FEL,SEC.13)	6050.00	74.32	39.55	3344351.83	1391462.14	40°24'4.9500"N	104°15'48.7044"W	point
STATE ANTELOPE W42-C12-13HNB LP REV-1 (2574'FNL & 470'FEL,SEC.13)	6050.00	74.32	39.55	3344351.83	1391462.14	40°24'4.9500"N	104°15'48.7044"W	point

WELLPATH COMPOSITION - Ref Wellbore: STATE ANTELOPE W42-C12-13HNB AWB Ref Wellpath: STATE ANTELOPE W42-C12-13HNB AWP					
Start MD [ft]	End MD [ft]	Positional Uncertainty Model	Log Name/Comment	Wellbore	Survey Date
17.00	1549.00	BHI NaviTrak (Rotating)	BH NaviTrak Surface MWD <123-1549>	STATE ANTELOPE W42-C12-13HNB AWB	1/8/2020
1549.00	11265.00	BH AutoTrak Curve (Short)	BH Monobore MWD Surveys <1694-11241>	STATE ANTELOPE W42-C12-13HNB AWB	1/22/2020



Actual Wellpath Report
STATE ANTELOPE W42-C12-13HNB AWP
Page 8 of 8



REFERENCE WELLPATH IDENTIFICATION			
Operator	BONANZA CREEK ENERGY	Well	STATE ANTELOPE W42-C12-13HNB
Field	WELD COUNTY (NAD83/TRUE)	API/Legal	
Facility	SEC.13-T05N-R62W	Wellbore	STATE ANTELOPE W42-C12-13HNB AWB
Slot	SLOT#09 STATE ANTELOPE W42-C12-13HNB (2647'FNL & 510'FEL,SEC.13)		

WELLPATH COMMENTS				
MD [ft]	Inclination [°]	Azimuth [°]	TVD [ft]	Comment
1549.00	6.140	79.790	1542.92	TIE ONTO BH SURFACE MWD SURVEYS
1694.00	6.160	84.860	1687.08	FIRST BH MONOBORE MWD SURVEY
6474.00	85.836	268.780	6113.64	LANDING POINT (2568'FNL & 475'FEL, SEC.13)
11241.00	89.910	268.160	6140.25	LAST BH MONOBORE MWD SURVEY (2472'FNL & 35'FWL, SEC.13)
11265.00	89.910	268.160	6140.29	PROJECTION TO BIT (2471'FNL & 11'FWL, SEC.13)