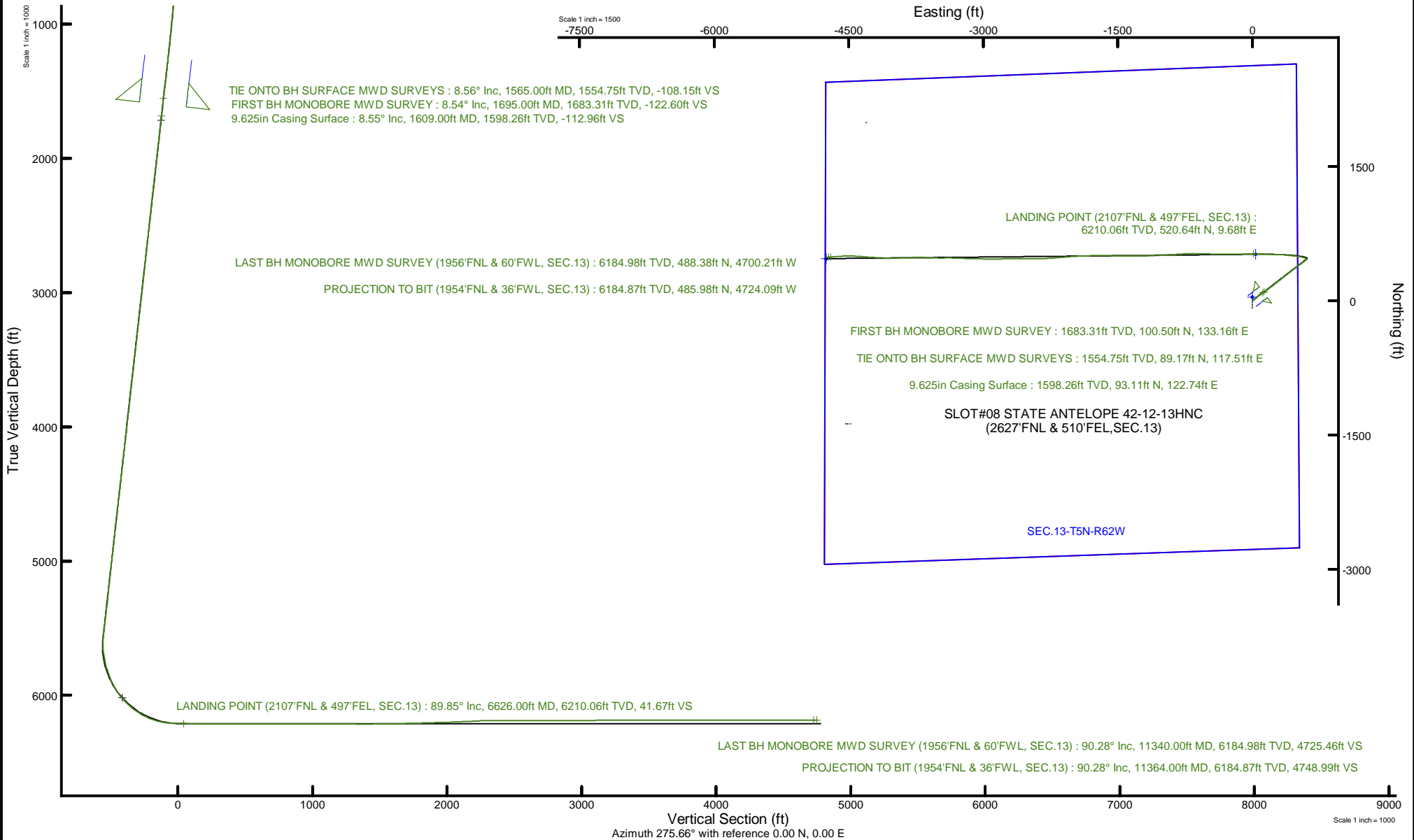


BONANZA CREEK ENERGY

Location: COLORADO Slot: SLOT#08 STATE ANTELOPE 42-12-13HNC (2627'FNL & 510'FEL,SEC.13)
 Field: WELD COUNTY (NAD83/TRUE) Well: STATE ANTELOPE 42-12-13HNC
 Facility: SEC.13-T05N-R62W Wellbore: STATE ANTELOPE 42-12-13HNC PWB 05-123-50290

Plot reference wellpath is STATE ANTELOPE 42-12-13HNC PWP (REV-C.0)	Grid System: NAD83 / Lambert Colorado SP, Northern Zone (501), US feet
True vertical depths are referenced to RIG (17) (RKB)	North Reference: True north
Reference wellpath measured depths are referenced to RIG (17) (RKB)	Scale: True distance
RIG (17) (RKB) to Mean Sea Level: 4590 feet	Coordinates are in feet referenced to Slot
Mean Sea Level to Ground level (At Slot: SLOT#08 STATE ANTELOPE 42-12-13HNC (2627'FNL & 510'FEL,SEC.13)): 0 feet	Depths are in feet
Offset wellpath MDs are referenced to each path's default MD datum	Created by: rrbial01 on 2020-03-04, Database: WellArchitectDB3





Actual Wellpath Report

STATE ANTELOPE 42-12-13HNC AWP
Page 1 of 8



REFERENCE WELLPATH IDENTIFICATION

Operator	BONANZA CREEK ENERGY	Well	STATE ANTELOPE 42-12-13HNC
Field	WELD COUNTY (NAD83/TRUE)	API/Legal	
Facility	SEC.13-T05N-R62W	Wellbore	STATE ANTELOPE 42-12-13HNC AWB
Slot	SLOT#08 STATE ANTELOPE 42-12-13HNC (2627'FNL & 510'FEL,SEC.13)		

REPORT SETUP INFORMATION

Projection System	NAD83 / Lambert Colorado SP, Northern Zone (501), US feet	Software System	WellArchitect® 6.0
North Reference	True	User	Robiale01
Scale	0.999960	Report Generated	2/26/2020 at 5:45:10 PM
Convergence at slot	0.80° East	Database	WA_DENVER

WELLPATH LOCATION

	Local coordinates		Grid coordinates		Geographic coordinates	
	North[ft]	East[ft]	Easting[US ft]	Northing[US ft]	Latitude	Longitude
Slot Location	1376.05	4472.43	3344312.77	1391407.31	40°24'4.4136"N	104°15'49.2192"W
Facility Reference Pt			3339859.89	1389969.91	40°23'50.8200"N	104°16'47.0280"W
Field Reference Pt			3224525.77	1254425.87	40°01'44.4000"N	104°41'53.5560"W

WELLPATH DATUM

Calculation method	Minimum curvature	RIG (17') (RKB) to Facility Vertical Datum	4590.00ft
Horizontal Reference Pt	Slot	RIG (17') (RKB) to Mean Sea Level	4590.00ft
Vertical Reference Pt	RIG (17') (RKB)	RIG (17') (RKB) to Ground Level at Slot (SLOT#08 STATE ANTELOPE 42-12-13HNC (2627'FNL & 510'FEL,SEC.13))	4590.00ft
MD Reference Pt	RIG (17') (RKB)	Section Origin	N 0.00, E 0.00 ft
Field Vertical Reference	Mean Sea Level	Section Azimuth	275.66°



Actual Wellpath Report

STATE ANTELOPE 42-12-13HNC AWP
Page 2 of 8



REFERENCE WELLPATH IDENTIFICATION			
Operator	BONANZA CREEK ENERGY	Well	STATE ANTELOPE 42-12-13HNC
Field	WELD COUNTY (NAD83/TRUE)	API/Legal	
Facility	SEC.13-T05N-R62W	Wellbore	STATE ANTELOPE 42-12-13HNC AWB
Slot	SLOT#08 STATE ANTELOPE 42-12-13HNC (2627'FNL & 510'FEL,SEC.13)		

WELLPATH DATA (128 stations) † = interpolated, ‡ = extrapolated station										
MD [ft]	Inclination [°]	Azimuth [°]	TVD [ft]	Vert Sect [ft]	North [ft]	East [ft]	Latitude	Longitude	DLS [°/100ft]	Comments
0.00†	0.000	139.730	0.00	0.00	0.00	0.00	40°24'4.4136"N	104°15'49.2192"W	0.00	
17.00	0.000	139.730	17.00	0.00	0.00	0.00	40°24'4.4136"N	104°15'49.2192"W	0.00	
123.00	0.330	139.730	123.00	-0.22	-0.23	0.20	40°24'4.4113"N	104°15'49.2166"W	0.31	
216.00	0.200	55.450	216.00	-0.54	-0.35	0.50	40°24'4.4102"N	104°15'49.2127"W	0.40	
308.00	0.030	11.040	308.00	-0.66	-0.23	0.64	40°24'4.4113"N	104°15'49.2109"W	0.20	
401.00	0.790	48.650	401.00	-1.10	0.22	1.13	40°24'4.4157"N	104°15'49.2046"W	0.82	
490.00	2.270	47.100	489.96	-2.69	1.82	2.88	40°24'4.4316"N	104°15'49.1820"W	1.66	
579.00	4.200	56.380	578.82	-6.38	4.83	6.88	40°24'4.4613"N	104°15'49.1302"W	2.24	
666.00	6.260	58.370	665.45	-12.62	9.08	13.58	40°24'4.5033"N	104°15'49.0437"W	2.38	
755.00	8.490	51.350	753.71	-21.18	15.73	22.84	40°24'4.5690"N	104°15'48.9240"W	2.70	
931.00	8.880	49.040	927.69	-39.81	32.75	43.25	40°24'4.7372"N	104°15'48.6602"W	0.30	
1020.00	8.470	47.560	1015.67	-48.90	41.67	53.27	40°24'4.8254"N	104°15'48.5307"W	0.52	
1109.00	8.260	46.550	1103.73	-57.47	50.49	62.75	40°24'4.9126"N	104°15'48.4081"W	0.29	
1198.00	8.080	54.150	1191.83	-66.34	58.55	72.46	40°24'4.9922"N	104°15'48.2826"W	1.23	
1285.00	8.520	58.540	1277.91	-76.05	65.50	82.91	40°24'5.0608"N	104°15'48.1475"W	0.89	
1373.00	8.250	57.730	1364.97	-86.23	72.27	93.81	40°24'5.1278"N	104°15'48.0066"W	0.33	
1461.00	8.920	54.380	1451.99	-96.34	79.62	104.70	40°24'5.2003"N	104°15'47.8659"W	0.95	
1549.00	8.820	52.520	1538.94	-106.39	87.69	115.60	40°24'5.2802"N	104°15'47.7250"W	0.35	
1565.00	8.560	52.400	1554.75	-108.15	89.17	117.51	40°24'5.2947"N	104°15'47.7003"W	1.63	TIE ONTO BH SURFACE MWD SURVEYS
1695.00	8.540	55.740	1683.31	-122.60	100.50	133.16	40°24'5.4067"N	104°15'47.4981"W	0.38	FIRST BH MONOBORE MWD SURVEY
1783.00	8.360	53.570	1770.35	-132.36	107.98	143.70	40°24'5.4806"N	104°15'47.3617"W	0.42	
1870.00	8.610	53.460	1856.40	-141.88	115.61	154.02	40°24'5.5561"N	104°15'47.2283"W	0.29	
1958.00	8.570	54.320	1943.41	-151.68	123.36	164.64	40°24'5.6326"N	104°15'47.0911"W	0.15	
2046.00	8.560	53.540	2030.43	-161.47	131.08	175.24	40°24'5.7088"N	104°15'46.9542"W	0.13	
2134.00	8.520	55.260	2117.46	-171.29	138.68	185.86	40°24'5.7840"N	104°15'46.8168"W	0.29	
2222.00	8.660	52.150	2204.47	-181.06	146.46	196.45	40°24'5.8609"N	104°15'46.6800"W	0.55	
2308.00	8.500	54.510	2289.51	-190.54	154.13	206.74	40°24'5.9366"N	104°15'46.5470"W	0.45	
2397.00	8.480	52.840	2377.53	-200.31	161.91	217.32	40°24'6.0135"N	104°15'46.4102"W	0.28	
2485.00	8.270	53.840	2464.59	-209.78	169.56	227.60	40°24'6.0891"N	104°15'46.2773"W	0.29	
2574.00	8.680	54.420	2552.62	-219.61	177.25	238.23	40°24'6.1651"N	104°15'46.1399"W	0.47	



Actual Wellpath Report

STATE ANTELOPE 42-12-13HNC AWP
Page 3 of 8



REFERENCE WELLPATH IDENTIFICATION			
Operator	BONANZA CREEK ENERGY	Well	STATE ANTELOPE 42-12-13HNC
Field	WELD COUNTY (NAD83/TRUE)	API/Legal	
Facility	SEC.13-T05N-R62W	Wellbore	STATE ANTELOPE 42-12-13HNC AWB
Slot	SLOT#08 STATE ANTELOPE 42-12-13HNC (2627'FNL & 510'FEL,SEC.13)		

WELLPATH DATA (128 stations)										
MD [ft]	Inclination [°]	Azimuth [°]	TVD [ft]	Vert Sect [ft]	North [ft]	East [ft]	Latitude	Longitude	DLS [°/100ft]	Comments
2661.00	8.970	51.690	2638.59	-229.42	185.27	248.89	40°24'6.2444"N	104°15'46.0021"W	0.59	
2750.00	8.760	49.320	2726.53	-239.10	193.99	259.48	40°24'6.3305"N	104°15'45.8653"W	0.47	
2839.00	8.400	51.550	2814.53	-248.44	202.45	269.71	40°24'6.4141"N	104°15'45.7330"W	0.55	
2927.00	8.730	49.280	2901.55	-257.67	210.80	279.80	40°24'6.4967"N	104°15'45.6025"W	0.54	
3016.00	8.700	54.530	2989.53	-267.40	219.12	290.40	40°24'6.5788"N	104°15'45.4655"W	0.89	
3103.00	8.960	52.980	3075.50	-277.33	227.01	301.17	40°24'6.6568"N	104°15'45.3263"W	0.41	
3191.00	8.810	50.440	3162.44	-287.12	235.43	311.84	40°24'6.7400"N	104°15'45.1884"W	0.48	
3280.00	8.790	49.800	3250.39	-296.66	244.16	322.29	40°24'6.8263"N	104°15'45.0534"W	0.11	
3367.00	9.060	49.560	3336.34	-306.04	252.89	332.58	40°24'6.9126"N	104°15'44.9204"W	0.31	
3454.00	9.300	50.190	3422.22	-315.72	261.84	343.19	40°24'7.0010"N	104°15'44.7832"W	0.30	
3541.00	9.120	53.010	3508.10	-325.72	270.49	354.10	40°24'7.0864"N	104°15'44.6422"W	0.56	
3629.00	8.760	50.380	3595.03	-335.57	278.96	364.83	40°24'7.1701"N	104°15'44.5035"W	0.62	
3717.00	8.720	50.500	3682.01	-344.98	287.47	375.14	40°24'7.2543"N	104°15'44.3702"W	0.05	
3806.00	8.920	50.170	3769.96	-354.58	296.18	385.65	40°24'7.3404"N	104°15'44.2344"W	0.23	
3894.00	9.050	51.380	3856.88	-364.32	304.87	396.29	40°24'7.4262"N	104°15'44.0968"W	0.26	
3983.00	8.830	52.790	3944.80	-374.34	313.37	407.20	40°24'7.5102"N	104°15'43.9558"W	0.35	
4072.00	8.870	52.440	4032.74	-384.34	321.69	418.08	40°24'7.5924"N	104°15'43.8152"W	0.08	
4160.00	8.660	51.530	4119.71	-394.04	329.94	428.65	40°24'7.6740"N	104°15'43.6786"W	0.29	
4249.00	8.710	52.200	4207.69	-403.75	338.24	439.22	40°24'7.7560"N	104°15'43.5420"W	0.13	
4337.00	8.710	53.390	4294.68	-413.51	346.30	449.83	40°24'7.8356"N	104°15'43.4048"W	0.20	
4425.00	8.910	53.160	4381.64	-423.47	354.36	460.63	40°24'7.9152"N	104°15'43.2652"W	0.23	
4511.00	8.810	53.870	4466.61	-433.29	362.24	471.28	40°24'7.9930"N	104°15'43.1275"W	0.17	
4600.00	8.850	53.090	4554.56	-443.41	370.37	482.26	40°24'8.0734"N	104°15'42.9856"W	0.14	
4687.00	8.840	53.400	4640.52	-453.29	378.37	492.98	40°24'8.1525"N	104°15'42.8471"W	0.06	
4775.00	8.590	54.460	4727.51	-463.24	386.22	503.75	40°24'8.2301"N	104°15'42.7078"W	0.34	
4863.00	7.960	53.950	4814.59	-472.74	393.63	514.03	40°24'8.3032"N	104°15'42.5750"W	0.72	
4950.00	8.680	53.230	4900.67	-482.08	401.10	524.16	40°24'8.3771"N	104°15'42.4440"W	0.84	
5039.00	8.630	55.050	4988.66	-492.11	408.95	535.01	40°24'8.4546"N	104°15'42.3037"W	0.31	
5126.00	8.390	55.050	5074.70	-501.88	416.32	545.56	40°24'8.5275"N	104°15'42.1673"W	0.28	
5213.00	8.360	52.280	5160.77	-511.30	423.83	555.77	40°24'8.6017"N	104°15'42.0354"W	0.46	



Actual Wellpath Report

STATE ANTELOPE 42-12-13HNC AWP
Page 4 of 8



REFERENCE WELLPATH IDENTIFICATION			
Operator	BONANZA CREEK ENERGY	Well	STATE ANTELOPE 42-12-13HNC
Field	WELD COUNTY (NAD83/TRUE)	API/Legal	
Facility	SEC.13-T05N-R62W	Wellbore	STATE ANTELOPE 42-12-13HNC AWB
Slot	SLOT#08 STATE ANTELOPE 42-12-13HNC (2627'FNL & 510'FEL,SEC.13)		

WELLPATH DATA (128 stations)										
MD [ft]	Inclination [°]	Azimuth [°]	TVD [ft]	Vert Sect [ft]	North [ft]	East [ft]	Latitude	Longitude	DLS [°/100ft]	Comments
5302.00	6.800	54.030	5248.99	-519.94	430.88	565.15	40°24'8.6714"N	104°15'41.9142"W	1.77	
5391.00	8.570	60.910	5337.19	-529.33	437.20	575.21	40°24'8.7338"N	104°15'41.7841"W	2.24	
5480.00	8.600	53.090	5425.20	-539.68	444.42	586.33	40°24'8.8052"N	104°15'41.6404"W	1.31	
5567.00	8.660	53.610	5511.21	-549.33	452.22	596.80	40°24'8.8822"N	104°15'41.5050"W	0.11	
5655.00	7.040	30.270	5598.41	-556.50	460.81	604.85	40°24'8.9670"N	104°15'41.4009"W	4.02	
5744.00	8.190	307.970	5686.85	-553.41	469.44	602.60	40°24'9.0524"N	104°15'41.4301"W	11.28	
5833.00	15.410	294.030	5773.92	-536.80	478.17	586.78	40°24'9.1386"N	104°15'41.6346"W	8.66	
5920.00	21.280	281.180	5856.50	-510.08	485.95	560.70	40°24'9.2155"N	104°15'41.9717"W	8.16	
6009.00	27.830	281.390	5937.41	-473.30	493.19	524.45	40°24'9.2870"N	104°15'42.4402"W	7.36	
6097.00	39.150	273.640	6010.71	-424.92	499.03	476.41	40°24'9.3448"N	104°15'43.0611"W	13.73	
6186.00	48.860	278.160	6074.67	-363.19	505.59	415.04	40°24'9.4096"N	104°15'43.8545"W	11.46	
6274.00	56.040	273.900	6128.28	-293.50	512.78	345.72	40°24'9.4807"N	104°15'44.7505"W	9.01	
6362.00	66.820	270.990	6170.31	-216.47	515.98	268.62	40°24'9.5123"N	104°15'45.7470"W	12.59	
6449.00	78.280	272.320	6196.35	-133.81	518.40	185.80	40°24'9.5362"N	104°15'46.8175"W	13.25	
6538.00	87.070	270.070	6207.69	-45.90	520.22	97.64	40°24'9.5542"N	104°15'47.9571"W	10.19	
6626.00	89.850	270.470	6210.06	41.67	520.64	9.68	40°24'9.5583"N	104°15'49.0940"W	3.19	LANDING POINT (2107'FNL & 497'FEL, SEC.13)
6714.00	89.820	270.330	6210.31	129.30	521.25	-78.31	40°24'9.5644"N	104°15'50.2315"W	0.16	
6802.00	89.880	269.490	6210.54	216.86	521.11	-166.31	40°24'9.5630"N	104°15'51.3689"W	0.96	
6891.00	89.910	269.320	6210.70	305.33	520.19	-255.31	40°24'9.5539"N	104°15'52.5193"W	0.19	
6979.00	89.820	270.320	6210.91	392.87	519.91	-343.31	40°24'9.5511"N	104°15'53.6567"W	1.14	
7068.00	89.880	271.610	6211.14	481.57	521.41	-432.29	40°24'9.5659"N	104°15'54.8069"W	1.45	
7157.00	89.880	271.680	6211.33	570.35	523.96	-521.25	40°24'9.5912"N	104°15'55.9569"W	0.08	
7244.00	89.970	270.750	6211.44	657.09	525.81	-608.23	40°24'9.6094"N	104°15'57.0812"W	1.07	
7333.00	90.000	268.800	6211.47	745.62	525.46	-697.23	40°24'9.6059"N	104°15'58.2315"W	2.19	
7420.00	90.060	266.340	6211.42	831.75	521.77	-784.14	40°24'9.5694"N	104°15'59.3549"W	2.83	
7508.00	90.030	267.160	6211.35	918.68	516.78	-872.00	40°24'9.5201"N	104°16'0.4906"W	0.93	
7684.00	90.060	266.500	6211.21	1092.60	507.05	-1047.73	40°24'9.4239"N	104°16'2.7620"W	0.38	
7771.00	89.170	268.680	6211.80	1178.73	503.39	-1134.65	40°24'9.3877"N	104°16'3.8855"W	2.71	
7858.00	89.230	268.170	6213.01	1265.03	501.00	-1221.60	40°24'9.3640"N	104°16'5.0095"W	0.59	
7946.00	90.000	269.770	6213.61	1352.43	499.42	-1309.58	40°24'9.3483"N	104°16'6.1467"W	2.02	



Actual Wellpath Report

STATE ANTELOPE 42-12-13HNC AWP
Page 5 of 8



REFERENCE WELLPATH IDENTIFICATION			
Operator	BONANZA CREEK ENERGY	Well	STATE ANTELOPE 42-12-13HNC
Field	WELD COUNTY (NAD83/TRUE)	API/Legal	
Facility	SEC.13-T05N-R62W	Wellbore	STATE ANTELOPE 42-12-13HNC AWB
Slot	SLOT#08 STATE ANTELOPE 42-12-13HNC (2627'FNL & 510'FEL,SEC.13)		

WELLPATH DATA (128 stations)										
MD [ft]	Inclination [°]	Azimuth [°]	TVD [ft]	Vert Sect [ft]	North [ft]	East [ft]	Latitude	Longitude	DLS [°/100ft]	Comments
8034.00	90.090	270.650	6213.54	1440.03	499.74	-1397.58	40°24'9.3515"N	104°16'7.2842"W	1.01	
8123.00	90.920	271.320	6212.75	1528.73	501.27	-1486.57	40°24'9.3665"N	104°16'8.4343"W	1.20	
8212.00	90.950	270.750	6211.30	1617.43	502.88	-1575.54	40°24'9.3824"N	104°16'9.5844"W	0.64	
8299.00	91.020	270.710	6209.80	1704.09	503.99	-1662.52	40°24'9.3933"N	104°16'10.7087"W	0.09	
8387.00	91.910	269.160	6207.55	1791.62	503.89	-1750.49	40°24'9.3922"N	104°16'11.8458"W	2.03	
8475.00	91.820	268.470	6204.69	1878.95	502.07	-1838.42	40°24'9.3742"N	104°16'12.9824"W	0.79	
8562.00	91.820	267.320	6201.93	1965.11	498.88	-1925.32	40°24'9.3426"N	104°16'14.1056"W	1.32	
8649.00	91.820	265.930	6199.16	2050.98	493.76	-2012.12	40°24'9.2919"N	104°16'15.2276"W	1.60	
8736.00	92.800	265.640	6195.66	2136.62	487.37	-2098.81	40°24'9.2287"N	104°16'16.3482"W	1.17	
8825.00	92.680	265.110	6191.40	2224.10	480.20	-2187.42	40°24'9.1578"N	104°16'17.4935"W	0.61	
8913.00	90.920	265.670	6188.64	2310.64	473.13	-2275.09	40°24'9.0879"N	104°16'18.6267"W	2.10	
9001.00	90.490	268.670	6187.56	2397.66	468.79	-2362.96	40°24'9.0449"N	104°16'19.7625"W	3.44	
9090.00	90.150	270.320	6187.06	2486.14	468.00	-2451.96	40°24'9.0370"N	104°16'20.9128"W	1.89	
9179.00	89.970	273.360	6186.96	2574.93	470.86	-2540.90	40°24'9.0652"N	104°16'22.0625"W	3.42	
9266.00	89.970	268.740	6187.01	2661.63	472.45	-2627.86	40°24'9.0808"N	104°16'23.1866"W	5.31	
9443.00	89.970	267.650	6187.10	2837.13	466.88	-2804.77	40°24'9.0255"N	104°16'25.4733"W	0.62	
9531.00	90.120	270.560	6187.03	2924.54	465.50	-2892.75	40°24'9.0119"N	104°16'26.6105"W	3.31	
9620.00	90.000	271.400	6186.94	3013.25	467.03	-2981.74	40°24'9.0268"N	104°16'27.7607"W	0.95	
9708.00	90.180	271.600	6186.80	3101.02	469.33	-3069.71	40°24'9.0495"N	104°16'28.8978"W	0.31	
9797.00	90.550	271.010	6186.24	3189.76	471.36	-3158.68	40°24'9.0694"N	104°16'30.0479"W	0.78	
9885.00	89.940	272.320	6185.86	3277.54	473.91	-3246.64	40°24'9.0945"N	104°16'31.1848"W	1.64	
9974.00	90.000	272.220	6185.91	3366.39	477.44	-3335.57	40°24'9.1292"N	104°16'32.3343"W	0.13	
10062.00	90.030	268.480	6185.88	3453.99	477.98	-3423.55	40°24'9.1344"N	104°16'33.4716"W	4.25	
10150.00	90.120	271.290	6185.77	3541.54	477.80	-3511.55	40°24'9.1326"N	104°16'34.6089"W	3.19	
10240.00	90.250	272.560	6185.48	3631.35	480.82	-3601.49	40°24'9.1623"N	104°16'35.7716"W	1.42	
10327.00	89.510	271.210	6185.66	3718.15	483.68	-3688.44	40°24'9.1905"N	104°16'36.8955"W	1.77	
10416.00	90.280	267.850	6185.82	3806.63	482.95	-3777.43	40°24'9.1831"N	104°16'38.0457"W	3.87	
10505.00	89.880	267.770	6185.70	3894.80	479.55	-3866.36	40°24'9.1494"N	104°16'39.1952"W	0.46	
10595.00	90.310	268.470	6185.55	3984.02	476.60	-3956.31	40°24'9.1201"N	104°16'40.3579"W	0.91	
10683.00	89.970	270.840	6185.33	4071.53	476.07	-4044.30	40°24'9.1147"N	104°16'41.4953"W	2.72	



Actual Wellpath Report

STATE ANTELOPE 42-12-13HNC AWP
Page 6 of 8



REFERENCE WELLPATH IDENTIFICATION			
Operator	BONANZA CREEK ENERGY	Well	STATE ANTELOPE 42-12-13HNC
Field	WELD COUNTY (NAD83/TRUE)	API/Legal	
Facility	SEC.13-T05N-R62W	Wellbore	STATE ANTELOPE 42-12-13HNC AWB
Slot	SLOT#08 STATE ANTELOPE 42-12-13HNC (2627'FNL & 510'FEL,SEC.13)		

WELLPATH DATA (128 stations) † = interpolated, ‡ = extrapolated station										
MD [ft]	Inclination [°]	Azimuth [°]	TVD [ft]	Vert Sect [ft]	North [ft]	East [ft]	Latitude	Longitude	DLS [°/100ft]	Comments
10858.00	90.030	273.910	6185.33	4246.22	483.32	-4219.13	40°24'9.1860"N	104°16'43.7551"W	1.75	
10945.00	90.120	274.610	6185.22	4333.20	489.78	-4305.89	40°24'9.2498"N	104°16'44.8765"W	0.81	
11032.00	89.970	273.120	6185.15	4420.15	495.65	-4392.69	40°24'9.3076"N	104°16'45.9985"W	1.72	
11119.00	90.060	271.550	6185.13	4507.00	499.19	-4479.62	40°24'9.3424"N	104°16'47.1221"W	1.81	
11207.00	89.970	267.160	6185.11	4594.45	498.20	-4567.59	40°24'9.3325"N	104°16'48.2592"W	4.99	
11295.00	90.030	265.340	6185.11	4681.26	492.45	-4655.40	40°24'9.2754"N	104°16'49.3942"W	2.07	
11340.00	90.280	264.280	6184.98	4725.46	488.38	-4700.21	40°24'9.2351"N	104°16'49.9735"W	2.42	LAST BH MONOBORE MWD SURVEY (1956'FNL & 60'FWL, SEC.13)
11364.00‡	90.280	264.280	6184.87	4748.99	485.98	-4724.09	40°24'9.2115"N	104°16'50.2821"W	0.00	PROJECTION TO BIT (1954'FNL & 36'FWL, SEC.13)

HOLE & CASING SECTIONS - Ref Wellbore: STATE ANTELOPE 42-12-13HNC AWB Ref Wellpath: STATE ANTELOPE 42-12-13HNC AWP									
String/Diameter	Start MD [ft]	End MD [ft]	Interval [ft]	Start TVD [ft]	End TVD [ft]	Start N/S [ft]	Start E/W [ft]	End N/S [ft]	End E/W [ft]
13.5in Open Hole	17.00	1619.00	1602.00	17.00	1608.15	0.00	0.00	93.99	123.94
9.625in Casing Surface	17.00	1609.00	1592.00	17.00	1598.26	0.00	0.00	93.11	122.74
8.5in Open Hole	1619.00	11364.00	9745.00	1608.15	6184.87	93.99	123.94	485.98	-4724.09



Actual Wellpath Report

STATE ANTELOPE 42-12-13HNC AWP
Page 7 of 8



REFERENCE WELLPATH IDENTIFICATION			
Operator	BONANZA CREEK ENERGY	Well	STATE ANTELOPE 42-12-13HNC
Field	WELD COUNTY (NAD83/TRUE)	API/Legal	
Facility	SEC.13-T05N-R62W	Wellbore	STATE ANTELOPE 42-12-13HNC AWB
Slot	SLOT#08 STATE ANTELOPE 42-12-13HNC (2627'FNL & 510'FEL,SEC.13)		

TARGETS								
Name	TVD [ft]	North [ft]	East [ft]	Grid East [US ft]	Grid North [US ft]	Latitude	Longitude	Shape
SEC.13-T5N-R62W	0.00	40.07	0.00	3344312.21	1391447.38	40°24'4.8096"N	104°15'49.2192"W	polygon
2D Polygon: dimensions not calculated								
STATE ANTELOPE 42-12-13HNC BHL REV-2 (1970'FNL & 10'FWL,SEC.13)	6211.00	470.42	-4750.29	3339556.58	1391811.44	40°24'9.0576"N	104°16'50.6208"W	point
STATE ANTELOPE 42-12-13HNC LP REV-2 (2109'FNL & 470'FEL,SEC.13)	6211.00	519.14	36.76	3344342.29	1391926.89	40°24'9.5436"N	104°15'48.7440"W	point

WELLPATH COMPOSITION - Ref Wellbore: STATE ANTELOPE 42-12-13HNC AWB Ref Wellpath: STATE ANTELOPE 42-12-13HNC AWP					
Start MD [ft]	End MD [ft]	Positional Uncertainty Model	Log Name/Comment	Wellbore	Survey Date
17.00	1565.00	BHI NaviTrak (Rotating)	BH NaviTrak Surface MWD <123-1565>	STATE ANTELOPE 42-12-13HNC AWB	1/8/2020
1565.00	11364.00	BH AutoTrak Curve (Short)	BH Monobore MWD Surveys <1695-11340>	STATE ANTELOPE 42-12-13HNC AWB	1/25/2020



Actual Wellpath Report

STATE ANTELOPE 42-12-13HNC AWP
Page 8 of 8



REFERENCE WELLPATH IDENTIFICATION			
Operator	BONANZA CREEK ENERGY	Well	STATE ANTELOPE 42-12-13HNC
Field	WELD COUNTY (NAD83/TRUE)	API/Legal	
Facility	SEC.13-T05N-R62W	Wellbore	STATE ANTELOPE 42-12-13HNC AWB
Slot	SLOT#08 STATE ANTELOPE 42-12-13HNC (2627'FNL & 510'FEL,SEC.13)		

WELLPATH COMMENTS				
MD [ft]	Inclination [°]	Azimuth [°]	TVD [ft]	Comment
1565.00	8.560	52.400	1554.75	TIE ONTO BH SURFACE MWD SURVEYS
1695.00	8.540	55.740	1683.31	FIRST BH MONOBORE MWD SURVEY
6626.00	89.850	270.470	6210.06	LANDING POINT (2107'FNL & 497'FEL, SEC.13)
11340.00	90.280	264.280	6184.98	LAST BH MONOBORE MWD SURVEY (1956'FNL & 60'FWL, SEC.13)
11364.00	90.280	264.280	6184.87	PROJECTION TO BIT (1954'FNL & 36'FWL, SEC.13)