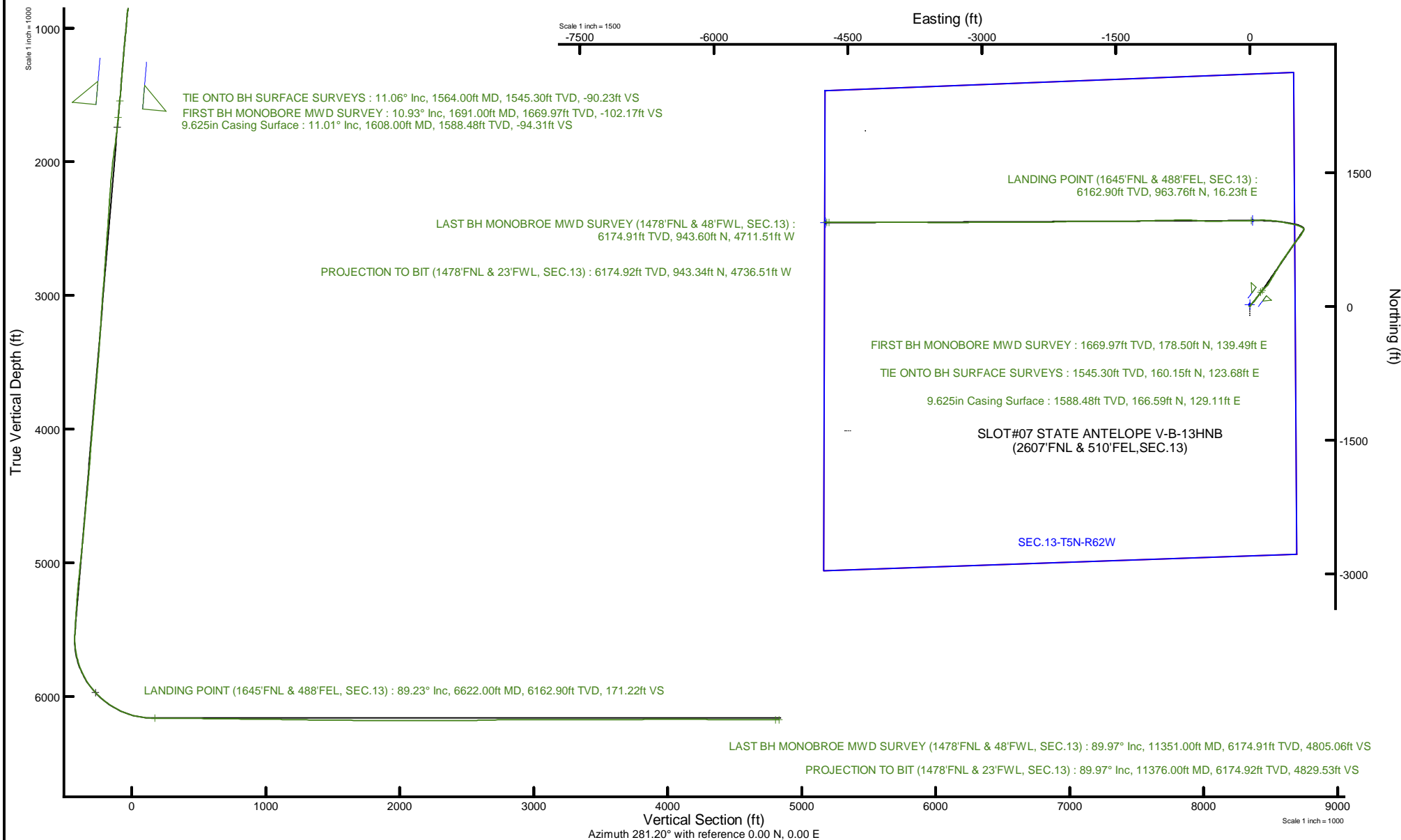


Location:	COLORADO	Slot:	SLOT#07 STATE ANTELOPE V-B-13HNB (2607'FNL & 510'FEL,SEC.13)		
Field:	WELD COUNTY (NAD83/TRUE)	Well:	STATE ANTELOPE V-B-13HNB		
Facility:	SEC.13-T05N-R62W	Wellbore:	STATE ANTELOPE V-B-13HNB PWB	05-123-50288	

Plot reference wellpath is STATE ANTELOPE V-8-13#B PWP (REV-C.0)	Grid System: NAD83 / Lambert Colorado SP, Northern Zone (501), US feet
True vertical depths are referenced to RIG (17) (RKB)	North Reference: True north
Reference wellpath measured depths are referenced to RIG (17) (RKB)	Scale: True distance
RIG (17) (RKB) to Mean Sea Level: 4590 feet	Coordinates are in feet referenced to Slat
Mean Sea Level to Ground level (At Slot: SLO707 STATE ANTELOPE V-8-13#B (2607FNL & 510FEL;SEC.13): 0 feet	Depths are in feet
Offset wellpath MDs are referenced to each path's default MD datum	Created by: robaleo1 on 2020-03-04; Database: WellArchitectDB3





Actual Wellpath Report

STATE ANTELOPE V-B-13HNB AWP

Page 1 of 8



REFERENCE WELLPATH IDENTIFICATION			
Operator	BONANZA CREEK ENERGY	Well	STATE ANTELOPE V-B-13HNB
Field	WELD COUNTY (NAD83/TRUE)	API/Legal	
Facility	SEC.13-T05N-R62W	Wellbore	STATE ANTELOPE V-B-13HNB AWB
Slot	SLOT#07 STATE ANTELOPE V-B-13HNB (2607'FNL & 510'FEL,SEC.13)		

REPORT SETUP INFORMATION			
Projection System	NAD83 / Lambert Colorado SP, Northern Zone (501), US feet	Software System	WellArchitect® 6.0
North Reference	True	User	Robiale01
Scale	0.999960	Report Generated	2/26/2020 at 5:43:55 PM
Convergence at slot	0.80° East	Database	WA_DENVER

WELLPATH LOCATION						
	Local coordinates		Grid coordinates		Geographic coordinates	
	North[ft]	East[ft]	Easting[US ft]	Northing[US ft]	Latitude	Longitude
Slot Location	1396.08	4472.42	3344312.49	1391427.34	40°24'4.6116"N	104°15'49.2192"W
Facility Reference Pt			3339859.89	1389969.91	40°23'50.8200"N	104°16'47.0280"W
Field Reference Pt			3224525.77	1254425.87	40°01'44.4000"N	104°41'53.5560"W

WELLPATH DATUM			
Calculation method	Minimum curvature	RIG (17") (RKB) to Facility Vertical Datum	4590.00ft
Horizontal Reference Pt	Slot	RIG (17") (RKB) to Mean Sea Level	4590.00ft
Vertical Reference Pt	RIG (17") (RKB)	RIG (17") (RKB) to Ground Level at Slot (SLOT#07 STATE ANTELOPE V-B-13HNB (2607'FNL & 510'FEL,SEC.13))	4590.00ft
MD Reference Pt	RIG (17") (RKB)	Section Origin	N 0.00, E 0.00 ft
Field Vertical Reference	Mean Sea Level	Section Azimuth	281.20°



Actual Wellpath Report
STATE ANTELOPE V-B-13HNB AWP
Page 2 of 8



REFERENCE WELLPATH IDENTIFICATION			
Operator	BONANZA CREEK ENERGY	Well	STATE ANTELOPE V-B-13HNB
Field	WELD COUNTY (NAD83/TRUE)	API/Legal	
Facility	SEC.13-T05N-R62W	Wellbore	STATE ANTELOPE V-B-13HNB AWB
Slot	SLOT#07 STATE ANTELOPE V-B-13HNB (2607'FNL & 510'FEL,SEC.13)		

WELLPATH DATA (130 stations) † = interpolated, ‡ = extrapolated station										
MD [ft]	Inclination [°]	Azimuth [°]	TVD [ft]	Vert Sect [ft]	North [ft]	East [ft]	Latitude	Longitude	DLS [°/100ft]	Comments
0.00†	0.000	299.010	0.00	0.00	0.00	0.00	40°24'4.6116"N	104°15'49.2192"W	0.00	
17.00	0.000	299.010	17.00	0.00	0.00	0.00	40°24'4.6116"N	104°15'49.2192"W	0.00	
123.00	0.460	299.010	123.00	0.41	0.21	-0.37	40°24'4.6136"N	104°15'49.2240"W	0.43	
216.00	0.220	289.890	216.00	0.94	0.45	-0.87	40°24'4.6160"N	104°15'49.2304"W	0.26	
308.00	0.800	51.990	307.99	0.69	0.90	-0.53	40°24'4.6205"N	104°15'49.2260"W	1.02	
401.00	2.160	43.720	400.96	-0.67	2.57	1.20	40°24'4.6370"N	104°15'49.2037"W	1.48	
490.00	3.970	39.180	489.83	-3.02	6.17	4.30	40°24'4.6726"N	104°15'49.1636"W	2.05	
579.00	6.290	36.610	578.47	-6.56	12.47	9.16	40°24'4.7349"N	104°15'49.1008"W	2.62	
666.00	8.560	37.420	664.73	-11.47	21.44	15.93	40°24'4.8235"N	104°15'49.0132"W	2.61	
755.00	10.720	43.170	752.47	-18.78	32.74	25.62	40°24'4.9351"N	104°15'48.8880"W	2.65	
843.00	12.200	40.890	838.72	-27.72	45.74	37.31	40°24'5.0636"N	104°15'48.7369"W	1.76	
931.00	12.120	38.250	924.74	-36.53	60.03	49.12	40°24'5.2047"N	104°15'48.5843"W	0.64	
1020.00	11.470	37.920	1011.86	-44.76	74.34	60.34	40°24'5.3462"N	104°15'48.4393"W	0.73	
1109.00	11.280	37.180	1099.11	-52.55	88.26	71.04	40°24'5.4837"N	104°15'48.3010"W	0.27	
1198.00	11.030	36.830	1186.43	-60.05	102.01	81.40	40°24'5.6196"N	104°15'48.1670"W	0.29	
1285.00	11.180	36.130	1271.80	-67.20	115.48	91.36	40°24'5.7528"N	104°15'48.0383"W	0.23	
1373.00	11.940	35.290	1358.02	-74.51	129.80	101.65	40°24'5.8943"N	104°15'47.9053"W	0.88	
1461.00	11.200	34.240	1444.23	-81.58	144.30	111.72	40°24'6.0375"N	104°15'47.7751"W	0.87	
1564.00	11.060	39.860	1545.30	-90.23	160.15	123.68	40°24'6.1942"N	104°15'47.6205"W	1.06	TIE ONTO BH SURFACE SURVEYS
1691.00	10.930	41.630	1669.97	-102.17	178.50	139.49	40°24'6.3755"N	104°15'47.4162"W	0.28	FIRST BH MONOBORE MWD SURVEY
1779.00	11.170	42.270	1756.33	-110.80	191.05	150.76	40°24'6.4994"N	104°15'47.2705"W	0.31	
1866.00	12.760	48.890	1841.44	-121.02	203.60	163.67	40°24'6.6235"N	104°15'47.1036"W	2.41	
1954.00	12.850	48.700	1927.26	-132.92	216.45	178.35	40°24'6.7505"N	104°15'46.9140"W	0.11	
2042.00	12.130	40.980	2013.18	-143.47	229.89	191.76	40°24'6.8833"N	104°15'46.7405"W	2.06	
2130.00	12.490	36.180	2099.16	-152.09	244.55	203.44	40°24'7.0281"N	104°15'46.5896"W	1.23	
2218.00	12.140	31.390	2185.14	-159.30	260.13	213.88	40°24'7.1821"N	104°15'46.4546"W	1.23	
2305.00	11.800	30.640	2270.24	-165.42	275.59	223.18	40°24'7.3349"N	104°15'46.3345"W	0.43	
2394.00	12.020	27.430	2357.33	-171.04	291.65	232.09	40°24'7.4936"N	104°15'46.2193"W	0.78	
2481.00	11.750	31.700	2442.46	-176.67	307.23	240.91	40°24'7.6475"N	104°15'46.1052"W	1.06	
2570.00	12.560	30.110	2529.47	-182.99	323.31	250.53	40°24'7.8064"N	104°15'45.9809"W	0.98	



Actual Wellpath Report
STATE ANTELOPE V-B-13HNB AWP
Page 3 of 8



REFERENCE WELLPATH IDENTIFICATION			
Operator	BONANZA CREEK ENERGY	Well	STATE ANTELOPE V-B-13HNB
Field	WELD COUNTY (NAD83/TRUE)	API/Legal	
Facility	SEC.13-T05N-R62W	Wellbore	STATE ANTELOPE V-B-13HNB AWB
Slot	SLOT#07 STATE ANTELOPE V-B-13HNB (2607'FNL & 510'FEL,SEC.13)		

WELLPATH DATA (130 stations)										
MD [ft]	Inclination [°]	Azimuth [°]	TVD [ft]	Vert Sect [ft]	North [ft]	East [ft]	Latitude	Longitude	DLS [°/100ft]	Comments
2658.00	12.000	31.750	2615.46	-189.30	339.36	260.14	40°24'7.9651"N	104°15'45.8566"W	0.75	
2746.00	12.860	29.010	2701.39	-195.51	355.71	269.71	40°24'8.1266"N	104°15'45.7330"W	1.18	
2835.00	11.830	30.750	2788.33	-201.59	372.21	279.18	40°24'8.2896"N	104°15'45.6106"W	1.23	
2923.00	10.720	33.190	2874.63	-207.67	386.81	288.27	40°24'8.4339"N	104°15'45.4931"W	1.37	
3012.00	11.850	36.390	2961.91	-214.66	401.10	298.22	40°24'8.5751"N	104°15'45.3644"W	1.45	
3100.00	11.340	30.930	3048.12	-221.43	415.79	308.03	40°24'8.7203"N	104°15'45.2377"W	1.37	
3188.00	10.860	29.860	3134.47	-227.01	430.40	316.60	40°24'8.8647"N	104°15'45.1268"W	0.59	
3276.00	12.960	28.070	3220.57	-232.52	446.30	325.38	40°24'9.0218"N	104°15'45.0134"W	2.42	
3363.00	12.420	27.440	3305.45	-237.97	463.21	334.28	40°24'9.1889"N	104°15'44.8984"W	0.64	
3450.00	12.890	29.200	3390.34	-243.59	479.99	343.32	40°24'9.3546"N	104°15'44.7815"W	0.70	
3538.00	12.130	35.210	3476.25	-250.39	496.11	353.44	40°24'9.5140"N	104°15'44.6506"W	1.71	
3626.00	12.330	35.800	3562.25	-258.06	511.29	364.27	40°24'9.6639"N	104°15'44.5107"W	0.27	
3714.00	12.530	33.840	3648.19	-265.65	526.83	375.08	40°24'9.8176"N	104°15'44.3709"W	0.53	
3803.00	11.460	34.430	3735.25	-272.85	542.15	385.46	40°24'9.9689"N	104°15'44.2368"W	1.21	
3891.00	11.410	36.410	3821.50	-280.01	556.36	395.57	40°24'10.1093"N	104°15'44.1061"W	0.45	
3979.00	11.130	34.820	3907.80	-287.12	570.34	405.58	40°24'10.2475"N	104°15'43.9767"W	0.48	
4068.00	12.300	33.080	3994.95	-294.10	585.34	415.66	40°24'10.3956"N	104°15'43.8464"W	1.37	
4157.00	11.810	35.070	4081.98	-301.32	600.73	426.07	40°24'10.5478"N	104°15'43.7118"W	0.72	
4245.00	11.830	33.670	4168.12	-308.41	615.61	436.25	40°24'10.6948"N	104°15'43.5803"W	0.33	
4333.00	11.670	32.780	4254.28	-315.13	630.60	446.07	40°24'10.8429"N	104°15'43.4534"W	0.27	
4421.00	11.710	37.820	4340.45	-322.41	645.14	456.36	40°24'10.9866"N	104°15'43.3203"W	1.16	
4508.00	12.460	33.210	4425.53	-329.88	659.97	466.91	40°24'11.1331"N	104°15'43.1839"W	1.40	
4596.00	12.600	35.870	4511.43	-337.45	675.69	477.74	40°24'11.2884"N	104°15'43.0440"W	0.67	
4684.00	12.590	37.090	4597.31	-345.64	691.12	489.15	40°24'11.4409"N	104°15'42.8965"W	0.30	
4771.00	12.590	34.170	4682.22	-353.48	706.52	500.19	40°24'11.5932"N	104°15'42.7538"W	0.73	
4860.00	12.160	33.670	4769.15	-360.85	722.35	510.83	40°24'11.7496"N	104°15'42.6162"W	0.50	
4947.00	11.450	40.380	4854.32	-368.57	736.56	521.51	40°24'11.8899"N	104°15'42.4782"W	1.78	
5035.00	11.730	42.790	4940.52	-377.51	749.77	533.25	40°24'12.0205"N	104°15'42.3265"W	0.64	
5209.00	11.910	38.550	5110.84	-395.03	776.80	556.45	40°24'12.2876"N	104°15'42.0265"W	0.51	
5298.00	12.540	35.630	5197.82	-403.25	791.83	567.80	40°24'12.4361"N	104°15'41.8798"W	0.99	



Actual Wellpath Report
STATE ANTELOPE V-B-13HNB AWP
Page 4 of 8



REFERENCE WELLPATH IDENTIFICATION			
Operator	BONANZA CREEK ENERGY	Well	STATE ANTELOPE V-B-13HNB
Field	WELD COUNTY (NAD83/TRUE)	API/Legal	
Facility	SEC.13-T05N-R62W	Wellbore	STATE ANTELOPE V-B-13HNB AWP
Slot	SLOT#07 STATE ANTELOPE V-B-13HNB (2607'FNL & 510'FEL,SEC.13)		

WELLPATH DATA (130 stations)										
MD [ft]	Inclination [°]	Azimuth [°]	TVD [ft]	Vert Sect [ft]	North [ft]	East [ft]	Latitude	Longitude	DLS [°/100ft]	Comments
5387.00	12.330	29.080	5284.74	-410.16	807.99	578.05	40°24'12.5958"N	104°15'41.7473"W	1.60	
5476.00	11.670	28.780	5371.79	-415.80	824.18	587.00	40°24'12.7558"N	104°15'41.6316"W	0.74	
5563.00	11.430	30.270	5457.03	-421.27	839.34	595.58	40°24'12.9056"N	104°15'41.5207"W	0.44	
5651.00	11.430	24.890	5543.29	-426.19	854.78	603.65	40°24'13.0582"N	104°15'41.4164"W	1.21	
5740.00	11.270	333.690	5630.76	-422.97	870.62	603.51	40°24'13.2146"N	104°15'41.4182"W	10.96	
5829.00	15.490	303.740	5717.42	-406.67	885.04	589.75	40°24'13.3571"N	104°15'41.5961"W	8.97	
5916.00	21.460	293.280	5799.92	-380.35	897.79	565.44	40°24'13.4832"N	104°15'41.9103"W	7.82	
6005.00	31.430	287.860	5879.52	-341.28	911.38	528.30	40°24'13.6175"N	104°15'42.3904"W	11.52	
6094.00	41.060	279.650	5951.26	-288.86	923.43	477.24	40°24'13.7366"N	104°15'43.0503"W	12.10	
6183.00	48.130	282.220	6014.60	-226.42	935.36	415.96	40°24'13.8545"N	104°15'43.8425"W	8.20	
6270.00	57.410	282.300	6067.18	-157.24	950.06	348.34	40°24'13.9997"N	104°15'44.7165"W	10.67	
6358.00	64.420	274.850	6109.97	-80.55	961.34	272.40	40°24'14.1112"N	104°15'45.6981"W	10.86	
6445.00	74.740	272.960	6140.29	0.20	966.84	191.17	40°24'14.1655"N	104°15'46.7481"W	12.03	
6534.00	83.340	268.410	6157.20	86.00	967.83	103.90	40°24'14.1753"N	104°15'47.8761"W	10.89	
6622.00	89.230	266.280	6162.90	171.22	963.76	16.23	40°24'14.1351"N	104°15'49.0095"W	7.12	LANDING POINT (1645'FNL & 488'FEL, SEC.13)
6711.00	90.120	269.040	6163.41	257.73	960.13	-72.69	40°24'14.0992"N	104°15'50.1588"W	3.26	
6799.00	89.260	269.430	6163.88	343.82	958.95	-160.68	40°24'14.0876"N	104°15'51.2962"W	1.07	
6887.00	90.180	269.840	6164.31	430.03	958.39	-248.67	40°24'14.0821"N	104°15'52.4336"W	1.14	
6975.00	88.490	269.140	6165.34	516.19	957.61	-336.66	40°24'14.0743"N	104°15'53.5709"W	2.08	
7064.00	89.080	269.480	6167.22	603.26	956.54	-425.63	40°24'14.0637"N	104°15'54.7210"W	0.77	
7153.00	89.690	272.720	6168.18	690.87	958.25	-514.60	40°24'14.0806"N	104°15'55.8710"W	3.70	
7241.00	89.720	275.210	6168.63	778.16	964.33	-602.38	40°24'14.1407"N	104°15'57.0057"W	2.83	
7329.00	89.630	270.560	6169.13	865.21	968.76	-690.24	40°24'14.1844"N	104°15'58.1414"W	5.28	
7417.00	89.450	269.790	6169.84	951.58	969.03	-778.24	40°24'14.1870"N	104°15'59.2788"W	0.90	
7504.00	89.170	268.390	6170.89	1036.64	967.64	-865.22	40°24'14.1734"N	104°16'0.4032"W	1.64	
7592.00	89.260	268.880	6172.09	1122.53	965.55	-953.19	40°24'14.1526"N	104°16'1.5402"W	0.57	
7680.00	88.520	268.580	6173.80	1208.44	963.60	-1041.15	40°24'14.1333"N	104°16'2.6772"W	0.91	
7767.00	89.480	269.220	6175.31	1293.43	961.93	-1128.12	40°24'14.1168"N	104°16'3.8014"W	1.33	
7855.00	88.860	267.930	6176.59	1379.29	959.74	-1216.08	40°24'14.0951"N	104°16'4.9384"W	1.63	
7943.00	89.910	268.770	6177.53	1465.08	957.21	-1304.04	40°24'14.0700"N	104°16'6.0753"W	1.53	



Actual Wellpath Report
STATE ANTELOPE V-B-13HNB AWP
Page 5 of 8



REFERENCE WELLPATH IDENTIFICATION			
Operator	BONANZA CREEK ENERGY	Well	STATE ANTELOPE V-B-13HNB
Field	WELD COUNTY (NAD83/TRUE)	API/Legal	
Facility	SEC.13-T05N-R62W	Wellbore	STATE ANTELOPE V-B-13HNB AWB
Slot	SLOT#07 STATE ANTELOPE V-B-13HNB (2607'FNL & 510'FEL,SEC.13)		

WELLPATH DATA (130 stations)										
MD [ft]	Inclination [°]	Azimuth [°]	TVD [ft]	Vert Sect [ft]	North [ft]	East [ft]	Latitude	Longitude	DLS [°/100ft]	Comments
8031.00	90.120	270.340	6177.51	1551.27	956.52	-1392.03	40°24'14.0632"N	104°16'7.2127"W	1.80	
8119.00	88.640	268.470	6178.46	1637.40	955.61	-1480.01	40°24'14.0541"N	104°16'8.3500"W	2.71	
8208.00	89.380	270.140	6180.00	1724.47	954.53	-1568.99	40°24'14.0434"N	104°16'9.5002"W	2.05	
8296.00	89.780	270.290	6180.65	1810.86	954.86	-1656.99	40°24'14.0466"N	104°16'10.6376"W	0.49	
8384.00	90.490	270.250	6180.44	1897.26	955.28	-1744.99	40°24'14.0507"N	104°16'11.7751"W	0.81	
8471.00	90.090	270.170	6180.00	1982.66	955.59	-1831.98	40°24'14.0538"N	104°16'12.8996"W	0.47	
8559.00	89.850	268.100	6180.04	2068.72	954.27	-1919.97	40°24'14.0406"N	104°16'14.0369"W	2.37	
8646.00	90.890	270.300	6179.48	2153.81	953.05	-2006.95	40°24'14.0285"N	104°16'15.1613"W	2.80	
8732.00	89.320	268.210	6179.32	2237.94	951.93	-2092.94	40°24'14.0174"N	104°16'16.2727"W	3.04	
8821.00	89.750	267.130	6180.05	2324.47	948.32	-2181.86	40°24'13.9815"N	104°16'17.4222"W	1.31	
8909.00	90.120	270.020	6180.15	2410.33	946.13	-2269.82	40°24'13.9598"N	104°16'18.5592"W	3.31	
8998.00	90.250	269.970	6179.86	2497.64	946.12	-2358.82	40°24'13.9597"N	104°16'19.7096"W	0.16	
9086.00	91.260	269.960	6178.70	2583.94	946.07	-2446.81	40°24'13.9591"N	104°16'20.8470"W	1.15	
9175.00	91.720	270.800	6176.39	2671.33	946.66	-2535.78	40°24'13.9648"N	104°16'21.9970"W	1.08	
9262.00	89.940	269.990	6175.13	2756.78	947.26	-2622.76	40°24'13.9706"N	104°16'23.1213"W	2.25	
9350.00	90.250	270.040	6174.98	2843.11	947.28	-2710.76	40°24'13.9708"N	104°16'24.2588"W	0.36	
9439.00	90.370	269.790	6174.50	2930.38	947.15	-2799.76	40°24'13.9694"N	104°16'25.4092"W	0.31	
9528.00	90.150	270.340	6174.09	3017.71	947.25	-2888.76	40°24'13.9703"N	104°16'26.5597"W	0.67	
9616.00	89.970	268.190	6174.00	3103.80	946.12	-2976.75	40°24'13.9590"N	104°16'27.6970"W	2.45	
9704.00	90.460	269.010	6173.67	3189.68	943.97	-3064.72	40°24'13.9377"N	104°16'28.8341"W	1.09	
9793.00	89.940	269.510	6173.36	3276.76	942.82	-3153.71	40°24'13.9262"N	104°16'29.9844"W	0.81	
9882.00	89.290	269.040	6173.96	3363.84	941.69	-3242.70	40°24'13.9150"N	104°16'31.1347"W	0.90	
9971.00	89.480	269.310	6174.91	3450.88	940.41	-3331.69	40°24'13.9022"N	104°16'32.2850"W	0.37	
10059.00	90.340	270.470	6175.05	3537.17	940.24	-3419.69	40°24'13.9004"N	104°16'33.4224"W	1.64	
10147.00	89.880	270.410	6174.88	3623.62	940.92	-3507.68	40°24'13.9069"N	104°16'34.5599"W	0.53	
10236.00	91.140	272.020	6174.09	3711.27	942.81	-3596.65	40°24'13.9255"N	104°16'35.7099"W	2.30	
10323.00	90.950	271.500	6172.50	3797.08	945.48	-3683.60	40°24'13.9517"N	104°16'36.8338"W	0.64	
10412.00	89.940	270.070	6171.81	3884.60	946.70	-3772.58	40°24'13.9637"N	104°16'37.9840"W	1.97	
10502.00	90.180	270.550	6171.72	3972.98	947.18	-3862.58	40°24'13.9683"N	104°16'39.1474"W	0.60	
10591.00	90.400	270.170	6171.27	4060.40	947.74	-3951.58	40°24'13.9737"N	104°16'40.2978"W	0.49	



Actual Wellpath Report
STATE ANTELOPE V-B-13HNB AWP
Page 6 of 8



REFERENCE WELLPATH IDENTIFICATION			
Operator	BONANZA CREEK ENERGY	Well	STATE ANTELOPE V-B-13HNB
Field	WELD COUNTY (NAD83/TRUE)	API/Legal	
Facility	SEC.13-T05N-R62W	Wellbore	STATE ANTELOPE V-B-13HNB AWB
Slot	SLOT#07 STATE ANTELOPE V-B-13HNB (2607'FNL & 510'FEL,SEC.13)		

WELLPATH DATA (130 stations) † = interpolated, ‡ = extrapolated station										
MD [ft]	Inclination [°]	Azimuth [°]	TVD [ft]	Vert Sect [ft]	North [ft]	East [ft]	Latitude	Longitude	DLS [°/100ft]	Comments
10679.00	90.000	269.790	6170.96	4146.71	947.71	-4039.58	40°24'13.9733"N	104°16'41.4352"W	0.63	
10768.00	89.510	270.170	6171.34	4234.01	947.68	-4128.58	40°24'13.9728"N	104°16'42.5856"W	0.70	
10854.00	89.140	269.620	6172.36	4318.34	947.52	-4214.57	40°24'13.9711"N	104°16'43.6972"W	0.77	
10941.00	88.650	268.930	6174.03	4403.45	946.42	-4301.55	40°24'13.9601"N	104°16'44.8215"W	0.97	
11029.00	89.750	270.360	6175.26	4489.65	945.88	-4389.53	40°24'13.9546"N	104°16'45.9588"W	2.05	
11116.00	90.340	269.360	6175.19	4574.95	945.66	-4476.53	40°24'13.9523"N	104°16'47.0833"W	1.33	
11203.00	90.180	270.490	6174.80	4660.27	945.55	-4563.53	40°24'13.9510"N	104°16'48.2079"W	1.31	
11292.00	89.820	268.440	6174.80	4747.41	944.72	-4652.52	40°24'13.9426"N	104°16'49.3582"W	2.34	
11351.00	89.970	269.390	6174.91	4805.06	943.60	-4711.51	40°24'13.9315"N	104°16'50.1207"W	1.63	LAST BH MONOBROE MWD SURVEY (1478'FNL & 48'FWL, SEC.13)
11376.00‡	89.970	269.390	6174.92	4829.53	943.34	-4736.51	40°24'13.9288"N	104°16'50.4438"W	0.00	PROJECTION TO BIT (1478'FNL & 23'FWL, SEC.13)

HOLE & CASING SECTIONS - Ref Wellbore: STATE ANTELOPE V-B-13HNB AWB Ref Wellpath: STATE ANTELOPE V-B-13HNB AWP									
String/Diameter	Start MD [ft]	End MD [ft]	Interval [ft]	Start TVD [ft]	End TVD [ft]	Start N/S [ft]	Start E/W [ft]	End N/S [ft]	End E/W [ft]
13.5in Open Hole	17.00	1618.00	1601.00	17.00	1598.30	0.00	0.00	168.04	130.36
9.625in Casing Surface	17.00	1608.00	1591.00	17.00	1588.48	0.00	0.00	166.59	129.11
8.5in Open Hole	1618.00	11376.00	9758.00	1598.30	6174.92	168.04	130.36	943.34	-4736.51



Actual Wellpath Report
STATE ANTELOPE V-B-13HNB AWP
Page 7 of 8



REFERENCE WELLPATH IDENTIFICATION			
Operator	BONANZA CREEK ENERGY	Well	STATE ANTELOPE V-B-13HNB
Field	WELD COUNTY (NAD83/TRUE)	API/Legal	
Facility	SEC.13-T05N-R62W	Wellbore	STATE ANTELOPE V-B-13HNB AWB
Slot	SLOT#07 STATE ANTELOPE V-B-13HNB (2607'FNL & 510'FEL,SEC.13)		

TARGETS								
Name	TVD [ft]	North [ft]	East [ft]	Grid East [US ft]	Grid North [US ft]	Latitude	Longitude	Shape
SEC.13-T5N-R62W	0.00	20.04	0.00	3344312.21	1391447.38	40°24'4.8096"N	104°15'49.2192"W	polygon
	2D Polygon: dimensions not calculated							
STATE ANTELOPE V-B-13HNB BHL REV-2 (1481'FNL & 10'FWL,SEC.13)	6161.00	940.02	-4749.09	3339550.96	1392301.02	40°24'13.8960"N	104°16'50.6064"W	point
STATE ANTELOPE V-B-13HNB LP REV-2 (1644'FNL & 470'FEL,SEC.13)	6161.00	964.33	33.98	3344333.02	1392392.02	40°24'14.1408"N	104°15'48.7800"W	point

WELLPATH COMPOSITION - Ref Wellbore: STATE ANTELOPE V-B-13HNB AWB Ref Wellpath: STATE ANTELOPE V-B-13HNB AWP					
Start MD [ft]	End MD [ft]	Positional Uncertainty Model	Log Name/Comment	Wellbore	Survey Date
17.00	1564.00	BHI NaviTrak (Rotating)	BH NaviTrak Surface MWD <123-1564>	STATE ANTELOPE V-B-13HNB AWB	1/8/2020
1564.00	11376.00	BH AutoTrak Curve (Short)	BH Monobore MWD Surveys <1691-11351>	STATE ANTELOPE V-B-13HNB AWB	1/27/2020



Actual Wellpath Report
STATE ANTELOPE V-B-13HNB AWP
Page 8 of 8



REFERENCE WELLPATH IDENTIFICATION			
Operator	BONANZA CREEK ENERGY	Well	STATE ANTELOPE V-B-13HNB
Field	WELD COUNTY (NAD83/TRUE)	API/Legal	
Facility	SEC.13-T05N-R62W	Wellbore	STATE ANTELOPE V-B-13HNB AWB
Slot	SLOT#07 STATE ANTELOPE V-B-13HNB (2607'FNL & 510'FEL,SEC.13)		

WELLPATH COMMENTS				
MD [ft]	Inclination [°]	Azimuth [°]	TVD [ft]	Comment
1564.00	11.060	39.860	1545.30	TIE ONTO BH SURFACE SURVEYS
1691.00	10.930	41.630	1669.97	FIRST BH MONOBORE MWD SURVEY
6622.00	89.230	266.280	6162.90	LANDING POINT (1645'FNL & 488'FEL, SEC.13)
11351.00	89.970	269.390	6174.91	LAST BH MONOBROE MWD SURVEY (1478'FNL & 48'FWL, SEC.13)
11376.00	89.970	269.390	6174.92	PROJECTION TO BIT (1478'FNL & 23'FWL, SEC.13)