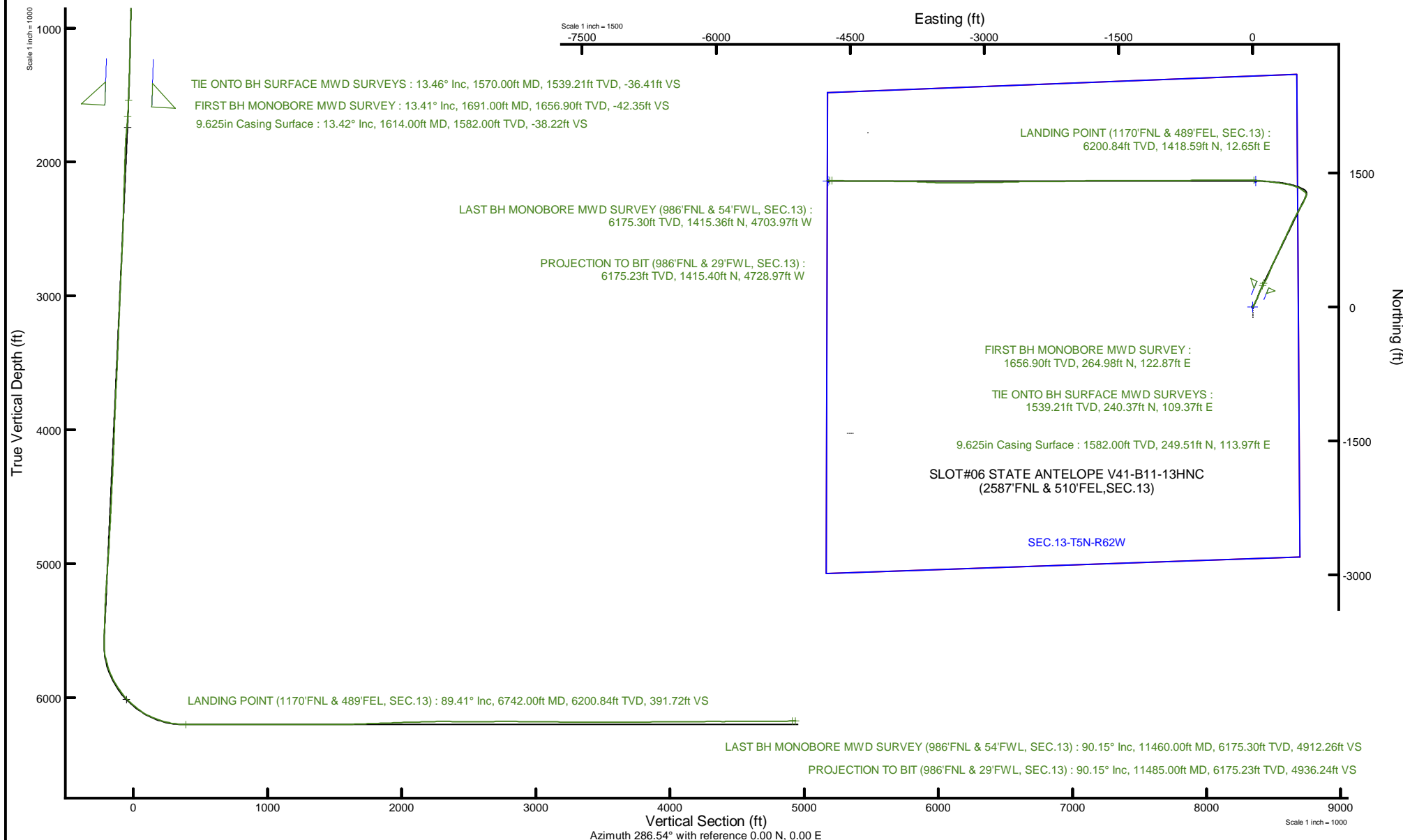


Location:	COLORADO	Slot:	SLOT#06 STATE ANTELOPE V41-B11-13HNC (2587'FNL & 510'FEL,SEC.13)		
Field:	WELD COUNTY (NAD83/TRUE)	Well:	STATE ANTELOPE V41-B11-13HNC		
Facility:	SEC.13-T05N-R62W	Wellbore:	STATE ANTELOPE V41-B11-13HNC PWB	05-123-50289	

<p>Plot reference wellpath is STATE ANTELOPE V41-B11-139NC PWP (RE-V-C-0)</p> <p>True vertical depths are referenced to RIG (17) (RKB)</p> <p>Reference wellpath measured depths are referenced to RIG (17) (RKB)</p> <p>RIG (17) (RKB) to Mean Sea Level: 4590 feet</p> <p>Mean Sea Level to Ground level (At Slot: SLO706 STATE ANTELOPE V41-B11-139NC (2567YNL &amp; 510FEL.SEC.133): 0 feet</p> <p>Offset wellbore MDs are referenced to each other's default MD datum</p>	<p>Grid System: NAD83 / Lambert Colorado SP, Northern Zone (501), US feet</p> <p>North Reference: True north</p> <p>Scale: True distance</p> <p>Coordinates are in feet referenced to Slot</p> <p>Depths are in feet</p> <p>Created by: mhs401 on 2020-03-04, Database: WellArchitectDB3</p>
--	--





Actual Wellpath Report

STATE ANTELOPE V41-B11-13HNC AWP

Page 1 of 8



REFERENCE WELLPATH IDENTIFICATION			
Operator	BONANZA CREEK ENERGY	Well	STATE ANTELOPE V41-B11-13HNC
Field	WELD COUNTY (NAD83/TRUE)	API/Legal	
Facility	SEC.13-T05N-R62W	Wellbore	STATE ANTELOPE V41-B11-13HNC AWB
Slot	SLOT#06 STATE ANTELOPE V41-B11-13HNC (2587'FNL & 510'FEL,SEC.13)		

REPORT SETUP INFORMATION			
Projection System	NAD83 / Lambert Colorado SP, Northern Zone (501), US feet	Software System	WellArchitect® 6.0
North Reference	True	User	Robiale01
Scale	0.999960	Report Generated	2/26/2020 at 5:42:45 PM
Convergence at slot	0.80° East	Database	WA_DENVER

WELLPATH LOCATION						
	Local coordinates		Grid coordinates		Geographic coordinates	
	North[ft]	East[ft]	Easting[US ft]	Northing[US ft]	Latitude	Longitude
Slot Location	1416.12	4472.42	3344312.21	1391447.38	40°24'4.8096"N	104°15'49.2192"W
Facility Reference Pt			3339859.89	1389969.91	40°23'50.8200"N	104°16'47.0280"W
Field Reference Pt			3224525.77	1254425.87	40°01'44.4000"N	104°41'53.5560"W

WELLPATH DATUM			
Calculation method	Minimum curvature	RIG (17") (RKB) to Facility Vertical Datum	4590.00ft
Horizontal Reference Pt	Slot	RIG (17") (RKB) to Mean Sea Level	4590.00ft
Vertical Reference Pt	RIG (17") (RKB)	RIG (17") (RKB) to Ground Level at Slot (SLOT#06 STATE ANTELOPE V41-B11-13HNC (2587'FNL & 510'FEL,SEC.13))	4590.00ft
MD Reference Pt	RIG (17") (RKB)	Section Origin	N 0.00, E 0.00 ft
Field Vertical Reference	Mean Sea Level	Section Azimuth	286.54°



Actual Wellpath Report  
STATE ANTELOPE V41-B11-13HNC AWP  
Page 2 of 8



REFERENCE WELLPATH IDENTIFICATION			
Operator	BONANZA CREEK ENERGY	Well	STATE ANTELOPE V41-B11-13HNC
Field	WELD COUNTY (NAD83/TRUE)	API/Legal	
Facility	SEC.13-T05N-R62W	Wellbore	STATE ANTELOPE V41-B11-13HNC AWB
Slot	SLOT#06 STATE ANTELOPE V41-B11-13HNC (2587'FNL & 510'FEL,SEC.13)		

WELLPATH DATA (131 stations) † = interpolated, ‡ = extrapolated station										
MD [ft]	Inclination [°]	Azimuth [°]	TVD [ft]	Vert Sect [ft]	North [ft]	East [ft]	Latitude	Longitude	DLS [°/100ft]	Comments
0.00†	0.000	54.970	0.00	0.00	0.00	0.00	40°24'4.8096"N	104°15'49.2192"W	0.00	
17.00	0.000	54.970	17.00	0.00	0.00	0.00	40°24'4.8096"N	104°15'49.2192"W	0.00	
216.00	0.740	54.970	215.99	-0.80	0.74	1.05	40°24'4.8169"N	104°15'49.2056"W	0.37	
308.00	2.090	34.470	307.96	-1.68	2.46	2.49	40°24'4.8339"N	104°15'49.1870"W	1.54	
401.00	4.070	34.510	400.83	-3.22	6.58	5.32	40°24'4.8746"N	104°15'49.1505"W	2.13	
492.00	5.950	24.350	491.48	-4.86	13.54	9.09	40°24'4.9434"N	104°15'49.1017"W	2.28	
581.00	7.690	29.660	579.84	-6.84	22.92	13.94	40°24'5.0361"N	104°15'49.0390"W	2.08	
668.00	9.920	28.290	665.81	-9.69	34.58	20.37	40°24'5.1513"N	104°15'48.9558"W	2.57	
757.00	12.060	25.210	753.18	-12.65	49.74	27.97	40°24'5.3011"N	104°15'48.8577"W	2.49	
845.00	14.400	25.850	838.83	-15.81	67.91	36.66	40°24'5.4806"N	104°15'48.7454"W	2.66	
933.00	16.150	23.400	923.72	-19.04	88.99	46.29	40°24'5.6890"N	104°15'48.6209"W	2.12	
1022.00	15.170	21.840	1009.42	-21.60	111.16	55.54	40°24'5.9080"N	104°15'48.5013"W	1.20	
1111.00	15.090	21.190	1095.33	-23.61	132.77	64.06	40°24'6.1216"N	104°15'48.3912"W	0.21	
1200.00	14.520	20.430	1181.38	-25.31	154.03	72.14	40°24'6.3316"N	104°15'48.2867"W	0.68	
1287.00	15.360	23.330	1265.44	-27.41	174.83	80.51	40°24'6.5372"N	104°15'48.1786"W	1.29	
1375.00	15.310	23.710	1350.31	-30.24	196.17	89.80	40°24'6.7480"N	104°15'48.0585"W	0.13	
1463.00	14.420	23.080	1435.36	-32.93	216.88	98.76	40°24'6.9528"N	104°15'47.9426"W	1.03	
1570.00	13.460	25.590	1539.21	-36.41	240.37	109.37	40°24'7.1849"N	104°15'47.8056"W	1.06	TIE ONTO BH SURFACE MWD SURVEYS
1691.00	13.410	31.950	1656.90	-42.35	264.98	122.87	40°24'7.4280"N	104°15'47.6310"W	1.22	FIRST BH MONOBORE MWD SURVEY
1779.00	15.530	38.440	1742.11	-49.46	282.87	135.60	40°24'7.6048"N	104°15'47.4665"W	3.03	
1866.00	16.480	29.350	1825.75	-56.54	302.75	148.89	40°24'7.8013"N	104°15'47.2946"W	3.08	
1954.00	16.660	22.470	1910.11	-60.61	325.29	159.83	40°24'8.0240"N	104°15'47.1532"W	2.24	
2042.00	15.700	23.050	1994.62	-63.27	347.90	169.32	40°24'8.2475"N	104°15'47.0307"W	1.11	
2130.00	15.230	23.500	2079.43	-66.02	369.46	178.59	40°24'8.4605"N	104°15'46.9108"W	0.55	
2218.00	16.130	22.600	2164.16	-68.71	391.35	187.89	40°24'8.6767"N	104°15'46.7905"W	1.06	
2305.00	16.090	22.200	2247.74	-71.17	413.66	197.09	40°24'8.8973"N	104°15'46.6716"W	0.14	
2393.00	15.460	23.180	2332.43	-73.73	435.74	206.32	40°24'9.1154"N	104°15'46.5524"W	0.78	
2481.00	16.230	21.560	2417.08	-76.17	457.96	215.45	40°24'9.3350"N	104°15'46.4343"W	1.01	
2570.00	16.280	22.690	2502.53	-78.59	481.03	224.84	40°24'9.5630"N	104°15'46.3130"W	0.36	
2658.00	15.300	24.190	2587.20	-81.46	503.01	234.35	40°24'9.7801"N	104°15'46.1900"W	1.21	



Actual Wellpath Report  
STATE ANTELOPE V41-B11-13HNC AWP  
Page 3 of 8



REFERENCE WELLPATH IDENTIFICATION			
Operator	BONANZA CREEK ENERGY	Well	STATE ANTELOPE V41-B11-13HNC
Field	WELD COUNTY (NAD83/TRUE)	API/Legal	
Facility	SEC.13-T05N-R62W	Wellbore	STATE ANTELOPE V41-B11-13HNC AWB
Slot	SLOT#06 STATE ANTELOPE V41-B11-13HNC (2587'FNL & 510'FEL,SEC.13)		

WELLPATH DATA (131 stations)										
MD [ft]	Inclination [°]	Azimuth [°]	TVD [ft]	Vert Sect [ft]	North [ft]	East [ft]	Latitude	Longitude	DLS [°/100ft]	Comments
2746.00	15.820	26.290	2671.98	-85.03	524.35	244.42	40°24'9.9910"N	104°15'46.0598"W	0.87	
2835.00	16.030	24.520	2757.56	-88.80	546.41	254.90	40°24'10.2090"N	104°15'45.9244"W	0.59	
2923.00	15.400	25.920	2842.27	-92.39	567.97	265.05	40°24'10.4221"N	104°15'45.7932"W	0.84	
3012.00	15.330	28.400	2928.09	-96.73	588.95	275.81	40°24'10.6294"N	104°15'45.6541"W	0.74	
3100.00	15.270	24.170	3012.98	-100.66	609.75	286.08	40°24'10.8350"N	104°15'45.5213"W	1.27	
3188.00	14.520	26.470	3098.02	-104.10	630.20	295.75	40°24'11.0370"N	104°15'45.3964"W	1.09	
3276.00	15.140	25.200	3183.09	-107.73	650.48	305.56	40°24'11.2373"N	104°15'45.2696"W	0.80	
3363.00	16.290	22.730	3266.84	-110.76	672.01	315.11	40°24'11.4501"N	104°15'45.1461"W	1.53	
3450.00	15.800	25.430	3350.45	-113.91	693.96	324.91	40°24'11.6671"N	104°15'45.0194"W	1.03	
3538.00	16.690	23.580	3434.94	-117.31	716.36	335.11	40°24'11.8884"N	104°15'44.8876"W	1.17	
3626.00	16.360	25.680	3519.30	-120.82	739.12	345.54	40°24'12.1132"N	104°15'44.7528"W	0.78	
3714.00	15.520	26.860	3603.92	-124.90	760.79	356.23	40°24'12.3274"N	104°15'44.6146"W	1.02	
3891.00	15.230	26.410	3774.58	-133.13	802.74	377.27	40°24'12.7419"N	104°15'44.3426"W	0.18	
3979.00	15.760	24.950	3859.38	-136.86	823.92	387.45	40°24'12.9513"N	104°15'44.2110"W	0.75	
4068.00	15.680	23.630	3945.06	-140.11	845.90	397.37	40°24'13.1685"N	104°15'44.0828"W	0.41	
4156.00	15.180	24.610	4029.88	-143.20	867.27	406.93	40°24'13.3796"N	104°15'43.9592"W	0.64	
4245.00	15.160	24.290	4115.78	-146.40	888.47	416.57	40°24'13.5891"N	104°15'43.8346"W	0.10	
4333.00	15.620	24.490	4200.63	-149.59	909.74	426.22	40°24'13.7993"N	104°15'43.7099"W	0.53	
4421.00	14.690	27.350	4285.57	-153.32	930.43	436.25	40°24'14.0038"N	104°15'43.5801"W	1.36	
4508.00	16.370	26.210	4369.39	-157.45	951.23	446.74	40°24'14.2093"N	104°15'43.4446"W	1.96	
4596.00	15.610	25.060	4453.98	-161.29	973.08	457.23	40°24'14.4252"N	104°15'43.3090"W	0.94	
4683.00	15.770	27.230	4537.74	-165.22	994.20	467.60	40°24'14.6339"N	104°15'43.1750"W	0.70	
4771.00	15.140	26.820	4622.56	-169.49	1015.09	478.25	40°24'14.8403"N	104°15'43.0372"W	0.73	
4859.00	16.000	27.080	4707.33	-173.76	1036.14	488.96	40°24'15.0483"N	104°15'42.8988"W	0.98	
4946.00	14.910	27.740	4791.18	-178.12	1056.73	499.63	40°24'15.2517"N	104°15'42.7609"W	1.27	
5035.00	14.630	28.340	4877.24	-182.65	1076.75	510.29	40°24'15.4496"N	104°15'42.6231"W	0.36	
5122.00	15.120	31.570	4961.33	-187.83	1096.09	521.45	40°24'15.6407"N	104°15'42.4788"W	1.11	
5298.00	14.970	32.320	5131.29	-199.97	1134.86	545.62	40°24'16.0238"N	104°15'42.1664"W	0.14	
5387.00	15.790	29.810	5217.11	-205.87	1155.08	557.79	40°24'16.2236"N	104°15'42.0091"W	1.19	
5476.00	15.460	22.700	5302.83	-209.93	1176.53	568.38	40°24'16.4356"N	104°15'41.8721"W	2.18	



Actual Wellpath Report  
STATE ANTELOPE V41-B11-13HNC AWP  
Page 4 of 8



REFERENCE WELLPATH IDENTIFICATION			
Operator	BONANZA CREEK ENERGY	Well	STATE ANTELOPE V41-B11-13HNC
Field	WELD COUNTY (NAD83/TRUE)	API/Legal	
Facility	SEC.13-T05N-R62W	Wellbore	STATE ANTELOPE V41-B11-13HNC AWB
Slot	SLOT#06 STATE ANTELOPE V41-B11-13HNC (2587'FNL & 510'FEL,SEC.13)		

WELLPATH DATA (131 stations) † = interpolated, ‡ = extrapolated station										
MD [ft]	Inclination [°]	Azimuth [°]	TVD [ft]	Vert Sect [ft]	North [ft]	East [ft]	Latitude	Longitude	DLS [°/100ft]	Comments
5563.00	14.030	23.890	5386.96	-212.52	1196.87	577.13	40°24'16.6366"N	104°15'41.7591"W	1.68	
5651.00	14.050	25.080	5472.33	-215.47	1216.30	585.98	40°24'16.8286"N	104°15'41.6447"W	0.33	
5740.00	15.230	25.140	5558.44	-218.82	1236.67	595.52	40°24'17.0298"N	104°15'41.5213"W	1.33	
5829.00	14.830	355.460	5644.52	-216.47	1258.64	599.59	40°24'17.2469"N	104°15'41.4687"W	8.57	
5916.00	17.040	317.280	5728.40	-201.47	1279.16	590.04	40°24'17.4497"N	104°15'41.5922"W	12.08	
6005.00	22.100	308.590	5812.25	-174.72	1299.20	568.09	40°24'17.6477"N	104°15'41.8759"W	6.54	
6093.00	31.450	303.050	5890.74	-137.28	1322.10	535.83	40°24'17.8740"N	104°15'42.2929"W	10.99	
6183.00	36.990	289.750	5965.23	-87.63	1344.10	490.57	40°24'18.0915"N	104°15'42.8780"W	10.31	
6270.00	46.060	286.500	6030.31	-30.04	1361.88	435.78	40°24'18.2672"N	104°15'43.5862"W	10.71	
6358.00	53.820	280.190	6086.93	37.08	1377.19	370.31	40°24'18.4185"N	104°15'44.4325"W	10.38	
6445.00	62.800	278.050	6132.59	110.40	1388.85	297.29	40°24'18.5337"N	104°15'45.3764"W	10.53	
6534.00	71.820	277.760	6166.89	191.49	1400.12	216.04	40°24'18.6451"N	104°15'46.4266"W	10.14	
6622.00	78.470	274.850	6189.44	275.13	1409.43	131.55	40°24'18.7370"N	104°15'47.5188"W	8.20	
6711.00	87.780	274.350	6200.08	361.49	1416.50	43.57	40°24'18.8069"N	104°15'48.6560"W	10.48	
6742.00†	89.407	273.399	6200.84	391.72	1418.59	12.65	40°24'18.8276"N	104°15'49.0557"W	6.08	LANDING POINT (1170'FNL & 489'FEL, SEC.13)
6755.00	90.090	273.000	6200.90	404.37	1419.32	-0.33	40°24'18.8348"N	104°15'49.2235"W	6.08	
6799.00	89.750	271.730	6200.96	447.03	1421.13	-44.29	40°24'18.8527"N	104°15'49.7917"W	2.99	
6887.00	89.780	269.440	6201.32	531.63	1422.03	-132.28	40°24'18.8616"N	104°15'50.9291"W	2.60	
6975.00	90.590	269.730	6201.04	615.81	1421.40	-220.28	40°24'18.8553"N	104°15'52.0666"W	0.98	
7064.00	90.310	269.630	6200.34	700.98	1420.90	-309.27	40°24'18.8504"N	104°15'53.2170"W	0.33	
7153.00	90.430	269.700	6199.76	786.15	1420.38	-398.27	40°24'18.8452"N	104°15'54.3674"W	0.16	
7241.00	89.480	269.290	6199.83	870.28	1419.60	-486.26	40°24'18.8375"N	104°15'55.5048"W	1.18	
7329.00	90.280	269.970	6200.02	954.47	1419.03	-574.26	40°24'18.8319"N	104°15'56.6423"W	1.19	
7417.00	89.600	269.360	6200.11	1038.68	1418.52	-662.26	40°24'18.8268"N	104°15'57.7798"W	1.04	
7504.00	89.690	269.390	6200.65	1121.81	1417.57	-749.25	40°24'18.8174"N	104°15'58.9043"W	0.11	
7592.00	89.910	269.640	6200.96	1205.95	1416.83	-837.25	40°24'18.8100"N	104°16'0.0418"W	0.38	
7680.00	89.480	269.310	6201.43	1290.07	1416.02	-925.24	40°24'18.8020"N	104°16'1.1792"W	0.62	
7767.00	90.460	269.500	6201.47	1373.21	1415.12	-1012.24	40°24'18.7931"N	104°16'2.3037"W	1.15	
7854.00	89.880	269.600	6201.21	1456.41	1414.43	-1099.23	40°24'18.7863"N	104°16'3.4283"W	0.68	
7942.00	90.340	269.800	6201.04	1540.64	1413.97	-1187.23	40°24'18.7817"N	104°16'4.5658"W	0.57	



Actual Wellpath Report  
STATE ANTELOPE V41-B11-13HNC AWP  
Page 5 of 8



REFERENCE WELLPATH IDENTIFICATION			
Operator	BONANZA CREEK ENERGY	Well	STATE ANTELOPE V41-B11-13HNC
Field	WELD COUNTY (NAD83/TRUE)	API/Legal	
Facility	SEC.13-T05N-R62W	Wellbore	STATE ANTELOPE V41-B11-13HNC AWB
Slot	SLOT#06 STATE ANTELOPE V41-B11-13HNC (2587'FNL & 510'FEL,SEC.13)		

WELLPATH DATA (131 stations)										
MD [ft]	Inclination [°]	Azimuth [°]	TVD [ft]	Vert Sect [ft]	North [ft]	East [ft]	Latitude	Longitude	DLS [°/100ft]	Comments
8031.00	91.790	270.770	6199.39	1626.06	1414.41	-1276.21	40°24'18.7860"N	104°16'5.7160"W	1.96	
8119.00	91.850	270.420	6196.59	1710.63	1415.33	-1364.16	40°24'18.7950"N	104°16'6.8529"W	0.40	
8208.00	91.940	270.500	6193.65	1796.11	1416.04	-1453.11	40°24'18.8020"N	104°16'8.0026"W	0.14	
8296.00	92.250	270.340	6190.43	1880.59	1416.69	-1541.05	40°24'18.8083"N	104°16'9.1394"W	0.40	
8384.00	92.180	269.690	6187.03	1964.89	1416.71	-1628.98	40°24'18.8085"N	104°16'10.2760"W	0.74	
8471.00	91.200	268.530	6184.47	2047.86	1415.36	-1715.93	40°24'18.7951"N	104°16'11.4000"W	1.75	
8558.00	91.820	269.450	6182.17	2130.78	1413.83	-1802.89	40°24'18.7799"N	104°16'12.5240"W	1.27	
8645.00	91.600	269.390	6179.58	2213.89	1412.95	-1889.84	40°24'18.7711"N	104°16'13.6480"W	0.26	
8732.00	89.970	268.900	6178.39	2296.90	1411.65	-1976.82	40°24'18.7582"N	104°16'14.7723"W	1.96	
8821.00	89.420	267.950	6178.86	2381.48	1409.20	-2065.79	40°24'18.7340"N	104°16'15.9223"W	1.23	
8909.00	90.000	268.590	6179.31	2465.05	1406.54	-2153.74	40°24'18.7076"N	104°16'17.0593"W	0.98	
8998.00	90.060	269.600	6179.26	2549.95	1405.14	-2242.73	40°24'18.6937"N	104°16'18.2096"W	1.14	
9086.00	90.340	269.860	6178.95	2634.19	1404.72	-2330.73	40°24'18.6895"N	104°16'19.3471"W	0.43	
9175.00	89.940	269.630	6178.73	2719.39	1404.33	-2419.73	40°24'18.6855"N	104°16'20.4975"W	0.52	
9262.00	90.180	269.840	6178.64	2802.68	1403.93	-2506.73	40°24'18.6814"N	104°16'21.6221"W	0.37	
9350.00	89.290	269.350	6179.05	2886.85	1403.30	-2594.72	40°24'18.6752"N	104°16'22.7595"W	1.15	
9439.00	88.860	266.930	6180.49	2971.29	1400.42	-2683.66	40°24'18.6466"N	104°16'23.9091"W	2.76	
9528.00	90.370	270.100	6181.09	3055.90	1398.11	-2772.61	40°24'18.6237"N	104°16'25.0590"W	3.95	
9616.00	89.080	268.900	6181.51	3140.04	1397.34	-2860.60	40°24'18.6160"N	104°16'26.1964"W	2.00	
9704.00	89.380	269.950	6182.69	3224.13	1396.46	-2948.59	40°24'18.6072"N	104°16'27.3337"W	1.24	
9793.00	90.030	268.720	6183.15	3309.15	1395.43	-3037.58	40°24'18.5968"N	104°16'28.4841"W	1.56	
9881.00	90.460	267.390	6182.77	3392.60	1392.44	-3125.53	40°24'18.5672"N	104°16'29.6209"W	1.59	
9971.00	89.970	268.900	6182.44	3478.00	1389.53	-3215.48	40°24'18.5383"N	104°16'30.7836"W	1.76	
10058.00	90.280	270.370	6182.25	3561.24	1388.97	-3302.47	40°24'18.5327"N	104°16'31.9081"W	1.73	
10147.00	89.660	270.110	6182.29	3646.66	1389.35	-3391.47	40°24'18.5363"N	104°16'33.0586"W	0.76	
10236.00	89.820	271.870	6182.70	3732.40	1390.88	-3480.45	40°24'18.5514"N	104°16'34.2088"W	1.99	
10323.00	90.400	272.290	6182.53	3816.64	1394.04	-3567.40	40°24'18.5824"N	104°16'35.3326"W	0.82	
10412.00	91.110	272.990	6181.36	3903.03	1398.14	-3656.29	40°24'18.6228"N	104°16'36.4817"W	1.12	
10501.00	90.490	272.660	6180.11	3989.48	1402.53	-3745.17	40°24'18.6660"N	104°16'37.6307"W	0.79	
10591.00	90.280	271.840	6179.51	4076.69	1406.06	-3835.10	40°24'18.7008"N	104°16'38.7931"W	0.94	





Actual Wellpath Report  
STATE ANTELOPE V41-B11-13HNC AWP  
Page 6 of 8



REFERENCE WELLPATH IDENTIFICATION			
Operator	BONANZA CREEK ENERGY	Well	STATE ANTELOPE V41-B11-13HNC
Field	WELD COUNTY (NAD83/TRUE)	API/Legal	
Facility	SEC.13-T05N-R62W	Wellbore	STATE ANTELOPE V41-B11-13HNC AWB
Slot	SLOT#06 STATE ANTELOPE V41-B11-13HNC (2587'FNL & 510'FEL,SEC.13)		

WELLPATH DATA (131 stations) † = interpolated, ‡ = extrapolated station										
MD [ft]	Inclination [°]	Azimuth [°]	TVD [ft]	Vert Sect [ft]	North [ft]	East [ft]	Latitude	Longitude	DLS [°/100ft]	Comments
10679.00	89.660	269.570	6179.55	4161.35	1407.14	-3923.09	40°24'18.7114"N	104°16'39.9305"W	2.67	
10768.00	91.140	271.530	6178.93	4246.90	1408.00	-4012.08	40°24'18.7197"N	104°16'41.0808"W	2.76	
10854.00	89.510	269.520	6178.45	4329.55	1408.78	-4098.06	40°24'18.7273"N	104°16'42.1923"W	3.01	
10941.00	90.090	270.360	6178.75	4412.92	1408.69	-4185.06	40°24'18.7263"N	104°16'43.3168"W	1.17	
11028.00	90.550	271.290	6178.26	4496.67	1409.94	-4272.05	40°24'18.7385"N	104°16'44.4413"W	1.19	
11115.00	89.690	269.820	6178.08	4580.30	1410.79	-4359.04	40°24'18.7467"N	104°16'45.5658"W	1.96	
11203.00	90.060	270.180	6178.27	4664.66	1410.79	-4447.04	40°24'18.7465"N	104°16'46.7033"W	0.59	
11292.00	90.950	271.400	6177.49	4750.31	1412.01	-4536.03	40°24'18.7585"N	104°16'47.8536"W	1.70	
11381.00	90.920	271.500	6176.04	4836.23	1414.27	-4624.99	40°24'18.7806"N	104°16'49.0035"W	0.12	
11460.00	90.150	270.090	6175.30	4912.26	1415.36	-4703.97	40°24'18.7913"N	104°16'50.0245"W	2.03	LAST BH MONOBORE MWD SURVEY (986'FNL & 54'FWL, SEC.13)
11485.00‡	90.150	270.090	6175.23	4936.24	1415.40	-4728.97	40°24'18.7916"N	104°16'50.3477"W	0.00	PROJECTION TO BIT (986'FNL & 29'FWL, SEC.13)

HOLE & CASING SECTIONS - Ref Wellbore: STATE ANTELOPE V41-B11-13HNC AWB      Ref Wellpath: STATE ANTELOPE V41-B11-13HNC AWP									
String/Diameter	Start MD [ft]	End MD [ft]	Interval [ft]	Start TVD [ft]	End TVD [ft]	Start N/S [ft]	Start E/W [ft]	End N/S [ft]	End E/W [ft]
13.5in Open Hole	17.00	1624.00	1607.00	17.00	1591.73	0.00	0.00	251.55	115.06
9.625in Casing Surface	17.00	1614.00	1597.00	17.00	1582.00	0.00	0.00	249.51	113.97
8.5in Open Hole	1624.00	11485.00	9861.00	1591.73	6175.23	251.55	115.06	1415.40	-4728.97



Actual Wellpath Report

STATE ANTELOPE V41-B11-13HNC AWP

Page 7 of 8



REFERENCE WELLPATH IDENTIFICATION			
Operator	BONANZA CREEK ENERGY	Well	STATE ANTELOPE V41-B11-13HNC
Field	WELD COUNTY (NAD83/TRUE)	API/Legal	
Facility	SEC.13-T05N-R62W	Wellbore	STATE ANTELOPE V41-B11-13HNC AWB
Slot	SLOT#06 STATE ANTELOPE V41-B11-13HNC (2587'FNL & 510'FEL,SEC.13)		

TARGETS								
Name	TVD [ft]	North [ft]	East [ft]	Grid East [US ft]	Grid North [US ft]	Latitude	Longitude	Shape
SEC.13-T5N-R62W	0.00	0.00	0.00	3344312.21	1391447.38	40°24'4.8096"N	104°15'49.2192"W	polygon
	2D Polygon: dimensions not calculated							
STATE ANTELOPE V41-B11-13HNC BHL REV-2 (991'FNL & 10'FWL,SEC.13)	6201.00	1409.98	-4747.88	3339545.33	1392790.97	40°24'18.7380"N	104°16'50.5920"W	point
STATE ANTELOPE V41-B11-13HNC LP REV-2 (1179'FNL & 470'FEL,SEC.13)	6201.00	1409.52	31.19	3344323.75	1392857.14	40°24'18.7380"N	104°15'48.8160"W	point

WELLPATH COMPOSITION - Ref Wellbore: STATE ANTELOPE V41-B11-13HNC AWB      Ref Wellpath: STATE ANTELOPE V41-B11-13HNC AWP					
Start MD [ft]	End MD [ft]	Positional Uncertainty Model	Log Name/Comment	Wellbore	Survey Date
17.00	1570.00	BHI NaviTrak (Rotating)	BH NaviTrak Surface MWD <216-1570>	STATE ANTELOPE V41-B11-13HNC AWB	1/8/2020
1570.00	11485.00	BH AutoTrak Curve (Short)	BH Monobore MWD Surveys <1691-11460>	STATE ANTELOPE V41-B11-13HNC AWB	1/30/2020





Actual Wellpath Report

STATE ANTELOPE V41-B11-13HNC AWP

Page 8 of 8



REFERENCE WELLPATH IDENTIFICATION			
Operator	BONANZA CREEK ENERGY	Well	STATE ANTELOPE V41-B11-13HNC
Field	WELD COUNTY (NAD83/TRUE)	API/Legal	
Facility	SEC.13-T05N-R62W	Wellbore	STATE ANTELOPE V41-B11-13HNC AWB
Slot	SLOT#06 STATE ANTELOPE V41-B11-13HNC (2587'FNL & 510'FEL,SEC.13)		

WELLPATH COMMENTS				
MD [ft]	Inclination [°]	Azimuth [°]	TVD [ft]	Comment
1570.00	13.460	25.590	1539.21	TIE ONTO BH SURFACE MWD SURVEYS
1691.00	13.410	31.950	1656.90	FIRST BH MONOBORE MWD SURVEY
6742.00	89.407	273.399	6200.84	LANDING POINT (1170'FNL & 489'FEL, SEC.13)
11460.00	90.150	270.090	6175.30	LAST BH MONOBORE MWD SURVEY (986'FNL & 54'FWL, SEC.13)
11485.00	90.150	270.090	6175.23	PROJECTION TO BIT (986'FNL & 29'FWL, SEC.13)