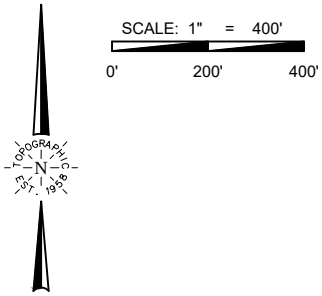


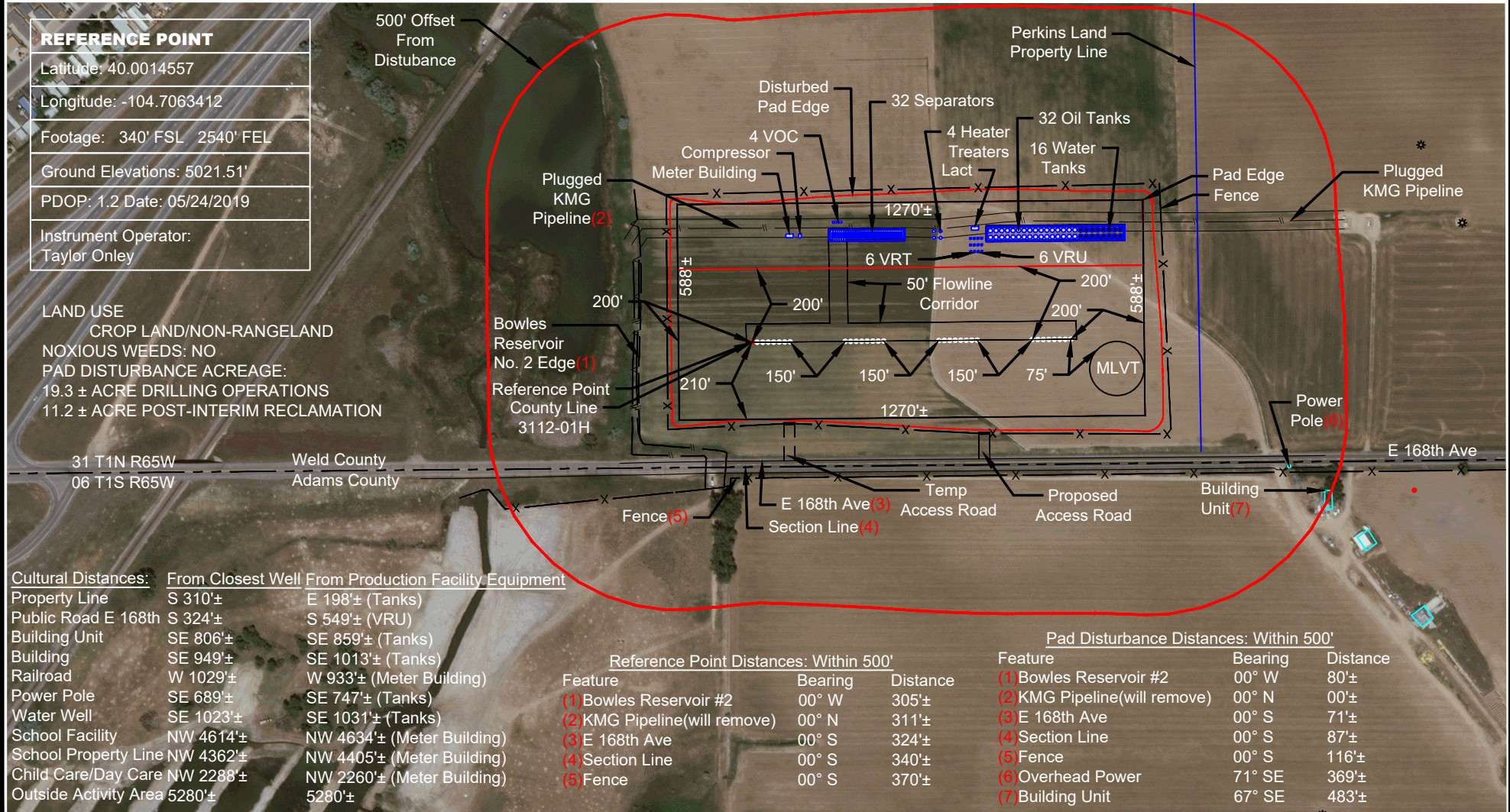
**LOCATION DRAWING**  
 SW 1/4 SE 1/4 SECTION 31  
 T1N R65W 6TH PM  
 WELD COUNTY, COLORADO



**REFERENCE POINT**

Latitude: 40.0014557  
 Longitude: -104.7063412  
 Footage: 340' FSL 2540' FEL  
 Ground Elevations: 5021.51'  
 PDOP: 1.2 Date: 05/24/2019  
 Instrument Operator:  
 Taylor Onley

LAND USE  
 CROP LAND/NON-RANGELAND  
 NOXIOUS WEEDS: NO  
 PAD DISTURBANCE ACREAGE:  
 19.3 ± ACRE DRILLING OPERATIONS  
 11.2 ± ACRE POST-INTERIM RECLAMATION



Cultural Distances:	From Closest Well	From Production Facility Equipment
Property Line	S 310'±	E 198'± (Tanks)
Public Road E 168th	S 324'±	S 549'± (VRU)
Building Unit	SE 806'±	SE 859'± (Tanks)
Building	SE 949'±	SE 1013'± (Tanks)
Railroad	W 1029'±	W 933'± (Meter Building)
Power Pole	SE 689'±	SE 747'± (Tanks)
Water Well	SE 1023'±	SE 1031'± (Tanks)
School Facility	NW 4614'±	NW 4634'± (Meter Building)
School Property Line	NW 4362'±	NW 4405'± (Meter Building)
Child Care/Day Care	NW 2288'±	NW 2260'± (Meter Building)
Outside Activity Area	5280'±	5280'±

Reference Point Distances: Within 500'

Feature	Bearing	Distance
(1) Bowles Reservoir #2	00° W	305'±
(2) KMG Pipeline (will remove)	00° N	311'±
(3) E 168th Ave	00° S	324'±
(4) Section Line	00° S	340'±
(5) Fence	00° S	370'±

Pad Disturbance Distances: Within 500'

Feature	Bearing	Distance
(1) Bowles Reservoir #2	00° W	80'±
(2) KMG Pipeline (will remove)	00° N	00'±
(3) E 168th Ave	00° S	71'±
(4) Section Line	00° S	87'±
(5) Fence	00° S	116'±
(6) Overhead Power	71° SE	369'±
(7) Building Unit	67° SE	483'±

**VERDAD RESOURCES**  
**COUNTY LINE PAD**  
**JOB NO. 116941, 116940**  
**118679**

MAPP	March 27, 2020
SHEET :	1 OF 2
FILE	F24_COUNTYLINE_3107_3112_3130_LOCATION_DRAWING_REV7

NOTE:  
 ALL PRODUCTION FACILITIES WILL BE ON PAD

**TOPOGRAPHIC**  
 LOYALTY INNOVATION LEGACY  
 520 Stacy Court Ste B, Lafayette, CO 80026  
 303.666.0379 www.topographic.com