

Renegade Oil & Gas Company LLC, Whitehead 4-11
039-06277

Inspection #688307204

3/6/2020

Routine Inspection

RENEGADE OIL & GAS COMPANY, LLC.
(303) 680-4725
WHITEHEAD #4-11
NE SW SEC.04-T6S-R62W
ELBERT COUNTY, COLORADO
ACCESS OFF OF CR 65, 1/2MI S. OF CO. LINE
IN CASE OF EMERGENCY, CALL 911

Colorado Oil and Gas Conservation Commission

39.55476, -104.34031, 5682.4ft, 341°

03/06/2020 10:07:34 AM



Colorado Oil and Gas Conservation Commission
39.55477, -104.34044, 5682.4ft, 54°
03/06/2020 10:07:49 AM



Colorado Oil and Gas Conservation Commission

39.5548, -104.34018, 5689.0ft, 259°

03/06/2020 10:08:28 AM



RENEGADE OIL & GAS COMPANY, LLC.
(303) 680-4725
WHITEHEAD 4-11
NE SW SEC.04-T6S-R62W
ELBERT COUNTY, COLORADO
ACCESS OFF OF CR 65, 1/2MI S. OF CO. LINE
IN CASE OF EMERGENCY, CALL 911



Colorado Oil and Gas Conservation Commission

39.5548, -104.33997, 5675.9ft, 84°

03/06/2020 10:08:51 AM



Colorado Oil and Gas Conservation Commission
39.55479, -104.33989, 5679.1ft, 100°
03/06/2020 10:09:02 AM



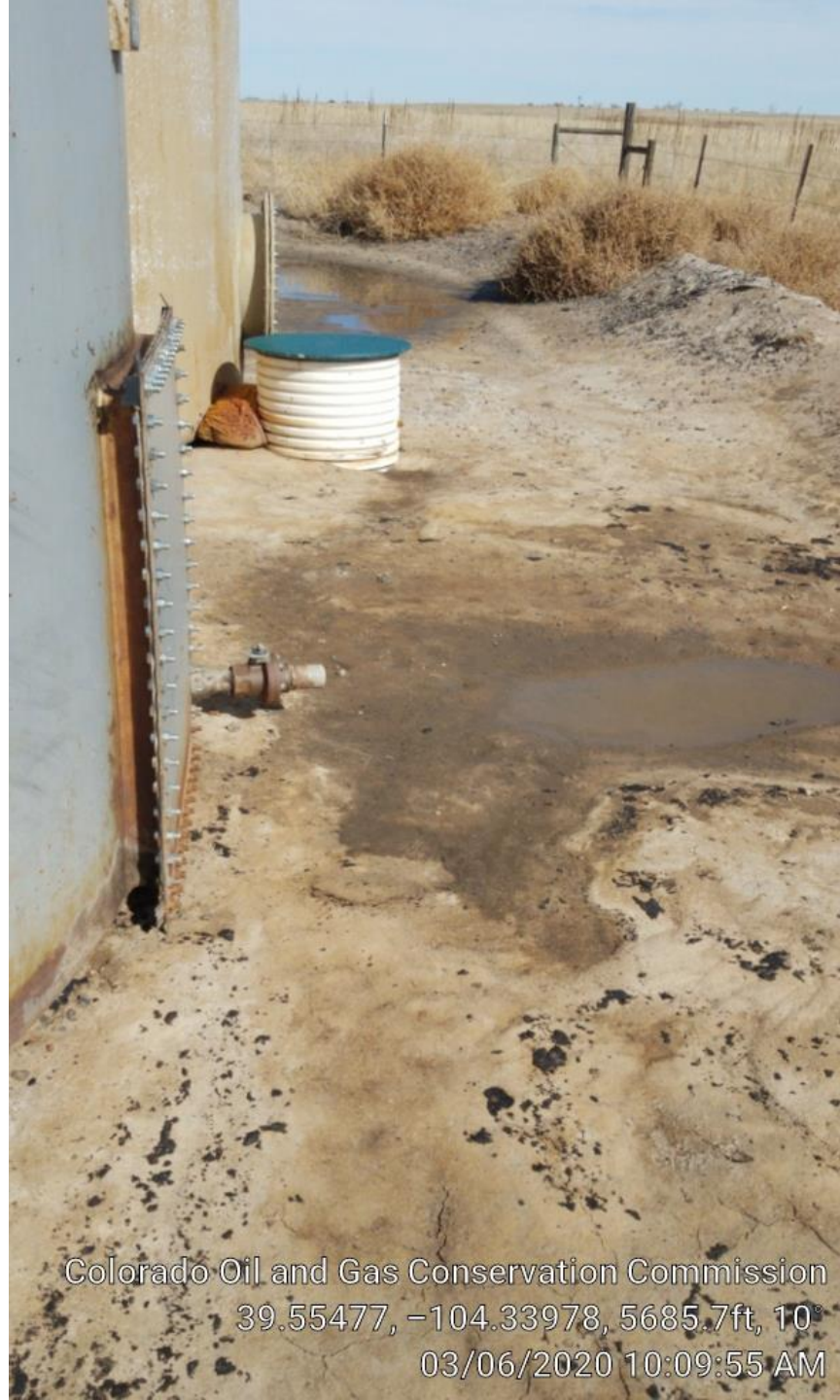
Colorado Oil and Gas Conservation Commission
39.55476, -104.33983, 5682.4ft, 10°
03/06/2020 10:09:45 AM



Colorado Oil and Gas Conservation Commission
39.55478, -104.3399, 5679.1ft, 76°
03/06/2020 10:09:17 AM



Colorado Oil and Gas Conservation Commission
39.5548, -104.3399, 5679.1ft, 73°
03/06/2020 10:09:09 AM



Colorado Oil and Gas Conservation Commission

39.55477, -104.33978, 5685.7ft, 10°

03/06/2020 10:09:55 AM



Colorado Oil and Gas Conservation Commission

39.55473, -104.33982, 5682.4ft, 79°

03/06/2020 10:10:04 AM



Colorado Oil and Gas Conservation Commission
39.55465, -104.33982, 5689.0ft, 178°
03/06/2020 10:10:18 AM



Colorado Oil and Gas Conservation Commission
39.5545, -104.33975, 5675.9ft, 192°
03/06/2020 10:10:36 AM



Colorado Oil and Gas Conservation Commission
39.55446, -104.33974, 5675.9ft, 292°
03/06/2020 10:10:49 AM



Colorado Oil and Gas Conservation Commission
39.55446, -104.33979, 5675.9ft, 309°
03/06/2020 10:10:59 AM