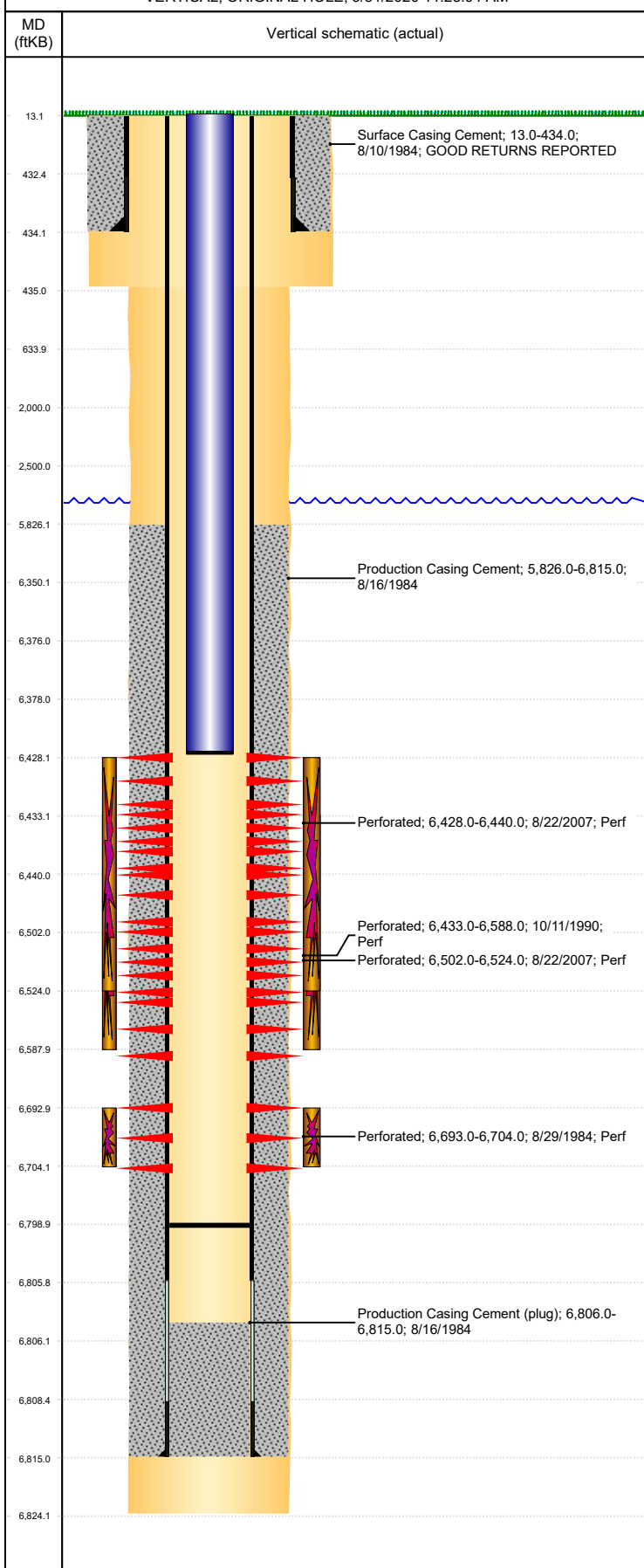


**Well Name: MINOR 01**

VERTICAL, ORIGINAL HOLE, 3/31/2020 11:25:04 AM



Well Header									
API 05-123-11920		Business Unit DJ BASIN		District 15		Well Config VERTICAL			
KB - GL / MSL (ft... 13.00		Spud Date 8/9/1984		P & A Date		Well Production Status SI			SoRT No
Comment DISCREPANCIES: DR RPT SPUD 8/9/1984; ST RPT SPUD 8/10/1984. ST RPT/DR RPT PROD CSG @ 6815'; DR RPT PROD CSG @ 6803'  COMMINGLE DISCREPANCY: 10/24/07 LAST WORKOVER RPT IN WELL FILE INDICATES SAND PLUG AT 6574' WITH NO CLEAN OUT, HOWEVER A CODELL/NIOBRARA COMMINGLE WAS REPORTED TO STATE ON 2/27/2008									
Surface Location (Congressional)									
Qtr 3 SW	Qtr 4 SW	Section 1	Twonshp 4	Twonsh... N	Range 64	Rng E... W	Actual Latitude (°) 40.33580805		Actual Longitude (°) -104.50587763
Wellbore Sections									
Section Des			Size (in)		Act Top, MD (ftKB)			Act Btm, MD (ftKB)	
SURFACE			12 1/4		13			435	
PRODUCTION			7 7/8		435			6,824	
Casing Strings									
Csg Des		Run Date		OD (in)	Wt/Len (lb/ft)	Grade	Top, MD (ftKB)	MD (ftKB)	
Surface		8/10/1984		8 5/8	24.00		13.0	434.0	
Production		8/15/1984		4 1/2	10.50	J-55	13.0	6,815.0	
Cement									
Des				Start Date		Top (ftKB)		Btm (ftKB)	
Surface Casing Cement				8/10/1984		13.0		434.0	
Production Casing Cement				8/16/1984		5,826.0		6,815.0	
Zone Statuses									
Zone Name	Status Date	Status	Fluid Type	Job				Prod Method	
NIOBRARA	2/16/2010	PR	Water					Flowing	
NIOBRARA	11/29/2016	SI						Flowing	
CODELL	2/16/2010	PR	Water					Flowing	
CODELL	11/29/2016	SI						Flowing	
Perforation Data									
Linked Zone		Bnch/Stg	Entered Shot Total	Top (ftKB)		Btm (ftKB)		Date	
NIOBRARA, ORIGINAL HOLE			48	6,428.00		6,440.00		8/22/2007	
NIOBRARA, ORIGINAL HOLE			12	6,433.00		6,588.00		10/11/1990	
NIOBRARA, ORIGINAL HOLE			88	6,502.00		6,524.00		8/22/2007	
CODELL, ORIGINAL HOLE			12	6,693.00		6,704.00		8/29/1984	
Stimulation Intervals									
Zone			Start Date		Top (ftKB)		Btm (ftKB)		
NIOBRARA, ORIGINAL HOLE			9/26/2007		6,428.0		6,524.0		
NIOBRARA, ORIGINAL HOLE			10/13/1990		6,433.0		6,588.0		
CODELL, ORIGINAL HOLE			9/11/1984		6,693.0		6,704.0		
Other In Hole									
Run Date		Des			OD (in)	Top (ftKB)		Btm (ftKB)	
4/21/2016		Plunger Lift			1 7/8				
Logs									
Date		Type				Top, MD (ftKB)		Btm, MD (ftKB)	
8/15/1984		COMPENSATED DENSITY				6,300.0		6,812.0	
8/15/1984		INDUCTION				434.0		6,815.0	
8/20/1984		CBL/CCL/GR				5,750.0		6,776.0	
3/23/2011		GYRO				10.0		6,400.0	
Plug Back Total Depths									
Date		Type		Com				Depth (ftKB)	
8/20/1984		FILL		DEPTH LOGGER ON CBL				6,782.0	
8/21/2007		FILL		TAGGED FILL				6,799.0	