

Inspection Photos

Operator: Hilcorp Energy
API#: 067-07232
Date: 3/24/2020



Photo 1. View of the project area from the southwestern corner facing center. Significant portions of the project area are lacking desirable vegetative cover.



Photo 2. View of equipment within the southwestern project area that needs to be removed.



Photo 3. View of erosional channel channeling approximately 1 foot wide and 10 inches deep, within the southwestern project area.

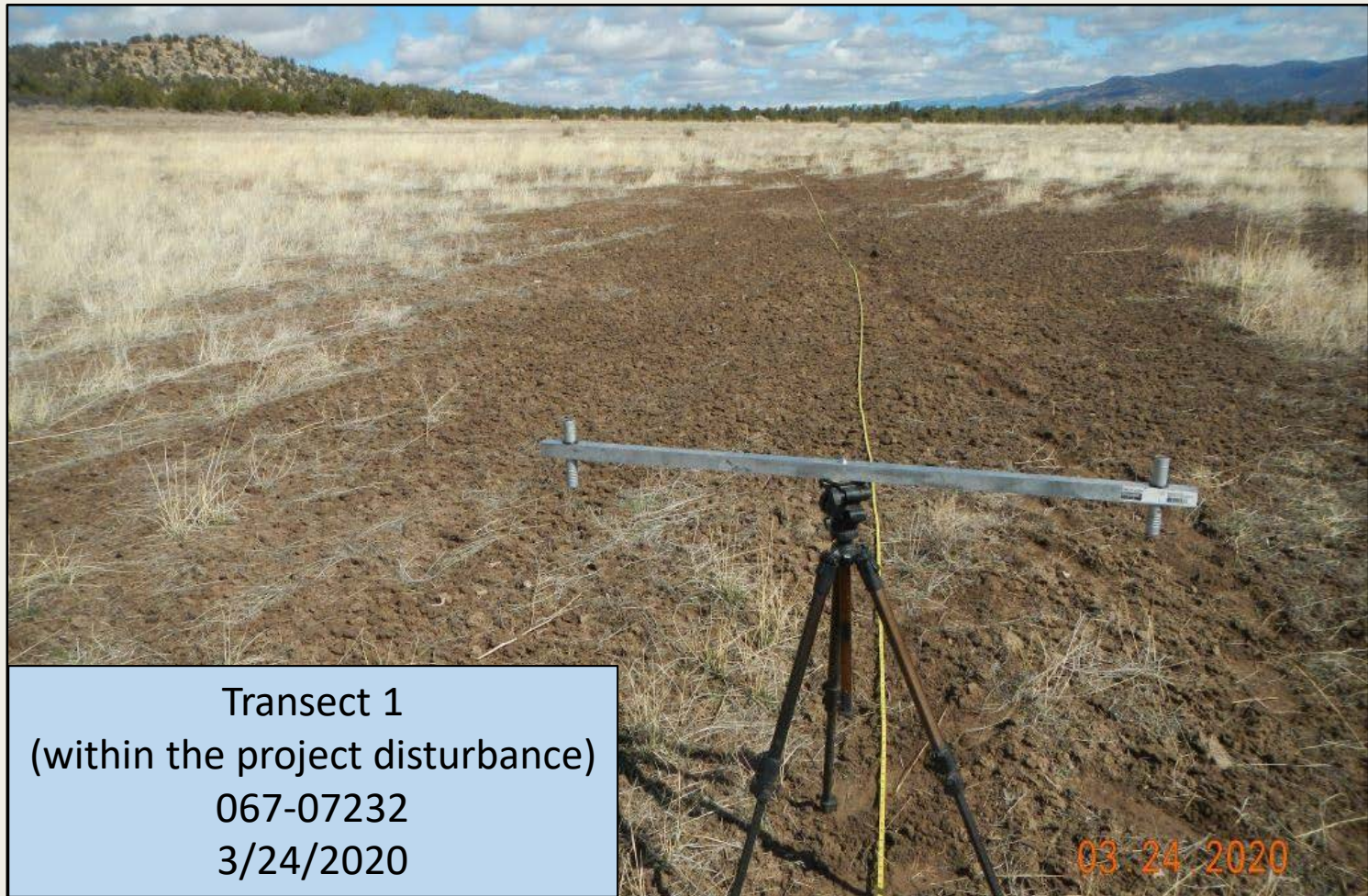


Photo 4. View of the beginning of Transect 1, within the project area, facing northwestward.



Photo 5. View from the midpoint of Transect 1, within the project disturbance, facing southward.

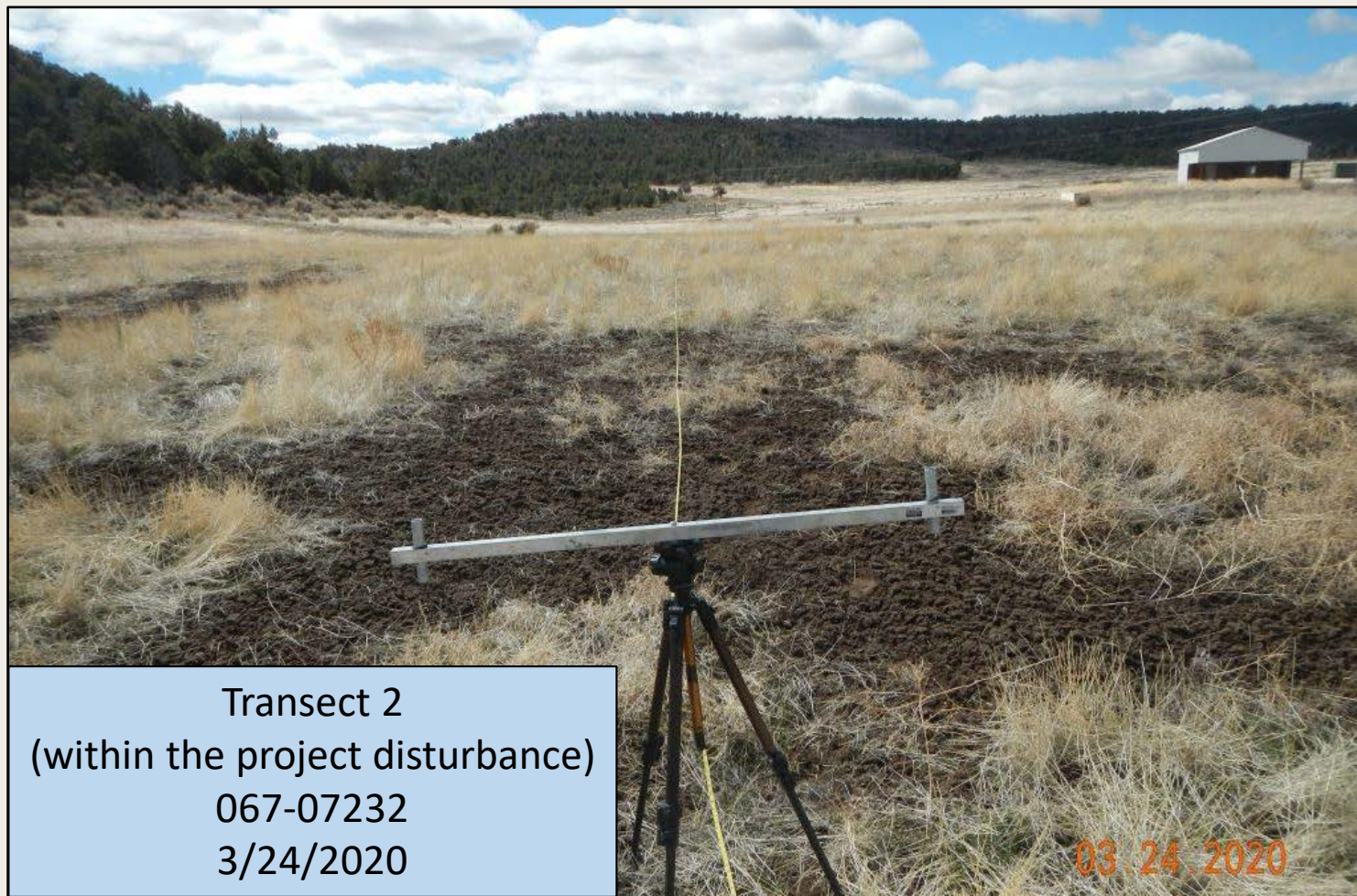


Photo 6. View of the beginning of Transect 2, within the project area, facing southward.



Photo 7. View of vegetation at midpoint along Transect 2, within the project area. Revegetation is comprised of a mix of wheatgrasses becoming established within portions of the project area.



Photo 8. View of the eastern project area, facing eastward from the well pad center. Patches of bare soils remain on location and revegetation lacks uniformity.



Photo 9. View of jointed goatgrass flowerheads observed within the project area.

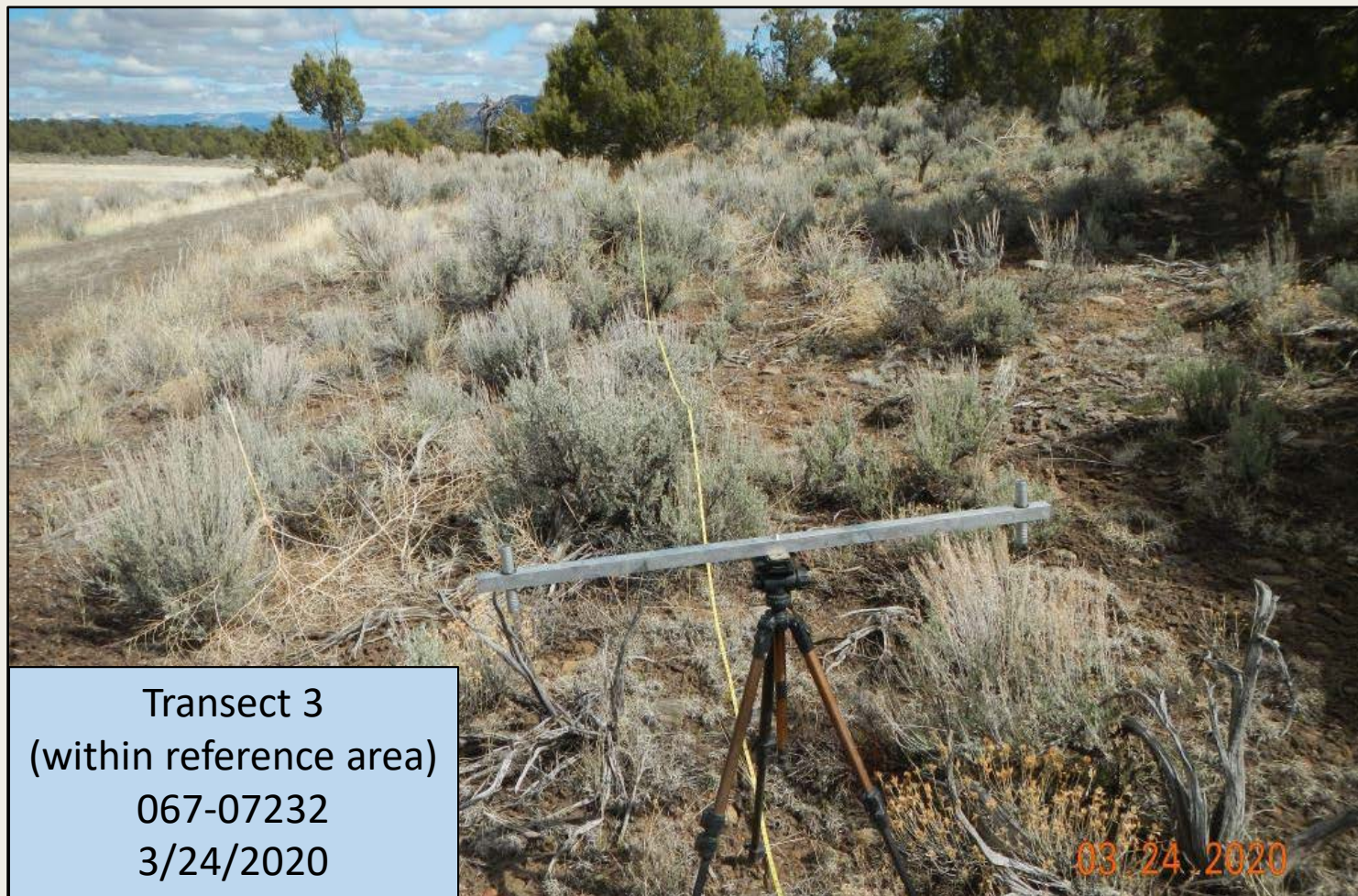


Photo 10. View of reference area, comprised of sagebrush shrubland, dominated by big sagebrush with grasses and forbs such as blue grama, James galleta, and yellow rabbitbrush.



Photo 11. Birdseye view of vegetation at transect midpoint.



Photo 12. GoogleEarth (2016) aerial view of project area and Transect locations.