

Inspection Photos

Operator: Hilcorp Energy
API#: 067-06145
Date: 3/24/2020



Photo 1. View of the project area from the well pad entrance facing center.



Photo 2. View of the northern project area from the well pad entrance facing westward. Revegetation is sparse within the majority of the project area. Some areas are revegetating with rubber rabbitbrush and sand dropseed.

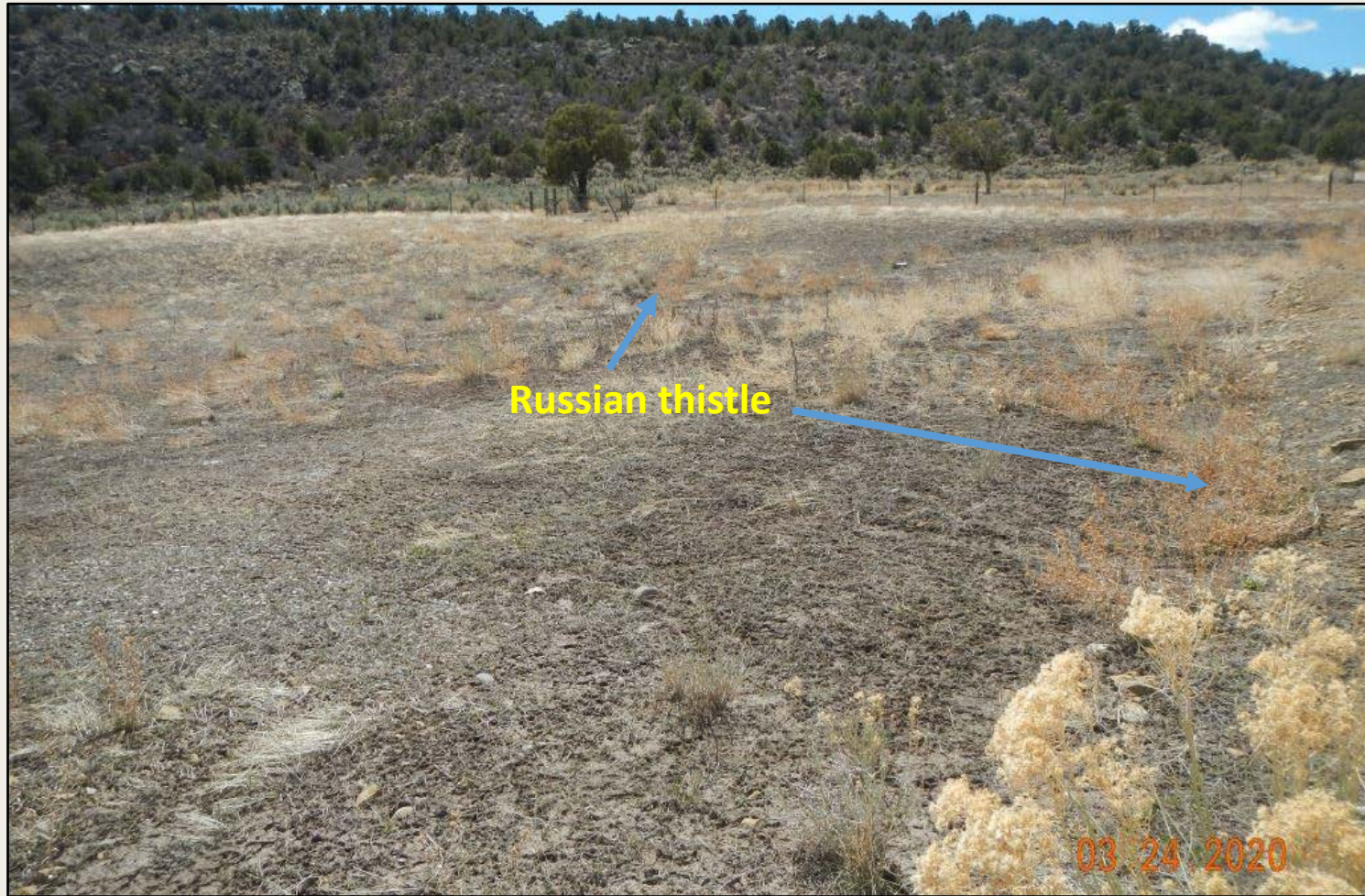


Photo 3. View of the southeastern project area facing southward. Significant portions of the interim reclamation area lack desirable vegetation and are only supporting weeds such as Russian thistle and cheatgrass.



Photo 4. Birdseye view of lack of desirable vegetation in the interim reclamation area. Observable vegetation is Russian thistle debris.



Photo 5. View of reference area vegetation, largely comprised of open sagebrush shrubland with native perennial grasses and forbs.