



RADIAL CEMENT BOND
GAMMA RAY
CCL
TEMP

Company		ANADARKO PETROLEUM CORP					
Well		NYGREN 6-19					
Field		WATTENBERG					
County		WELD					
State		COLORADO					
Location:		API # : 05-123-29333					
Permanent Datum		GROUND LEVEL Elevation 4956'					
Log Measured From		KELLY BUSHING = 20'					
Drilling Measured From		KELLY BUSHING					
SEC 19 TWP 4N RGE 67W		SW NW					
Other Services		NONE					
Elevation		K.B. 4976' D.F. 4975' G.L. 4956'					
Date		10 FEBRUARY 2020					
Run Number		ONE					
Depth Driller		7639'					
Depth Logger		2000'					
Bottom Logged Interval		2000'					
Top Log Interval		SURFACE					
Open Hole Size		8.62"					
Type Fluid		WATER					
Density / Viscosity		~8.3#					
Max. Recorded Temp.		93 DEG F					
Estimated Cement Top		SEE LOG					
Time Well Ready		ROA					
Time Logger on Bottom		1430					
Equipment Number		W-060					
Location		WINDSOR, CO					
Recorded By		TIM HAWLEY					
Witnessed By		SOCORRO OLIVAS					
Borehole Record		Tubing Record					
Run Number	Bit	From	To	Size	Weight	From	To
Casing Record	Size			Wgt/Ft		Top	Bottom
Surface String	8-5/8"			24#		20'	1285'
Prot. String							
Production String	4-1/2"			11.6#		20'	7639'
Liner							

<<< Fold Here >>>


All interpretations are opinions based on inferences from electrical or other measurements and we cannot and do not guarantee the accuracy or correctness of any interpretation, and we shall not, except in the case of gross or willful negligence on our part, be liable or responsible for any loss, costs, damages, or expenses incurred or sustained by anyone resulting from any interpretation made by any of our officers, agents or employees. These interpretations are also subject to our general terms and conditions set out in our current Price Schedule.

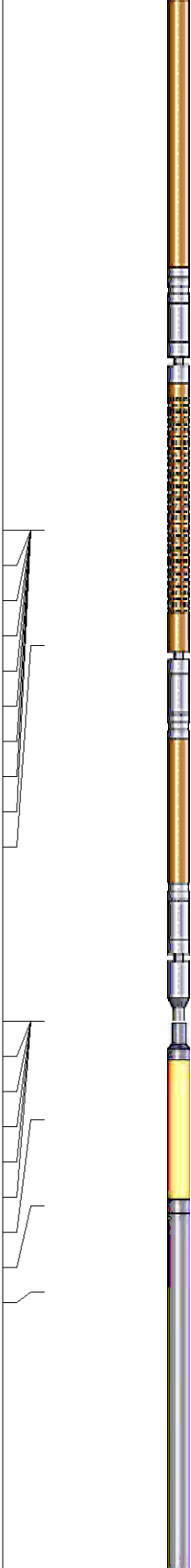
Comments

LOG NOT CORRELATED TO ANY EXISTING LOG

LOG RAN WITH 0 PSI ON CASING
FREE PIPE CALIBRATION @ 70'

THANK YOU FOR CHOOSING CUTTERS WIRELINE SERVICE

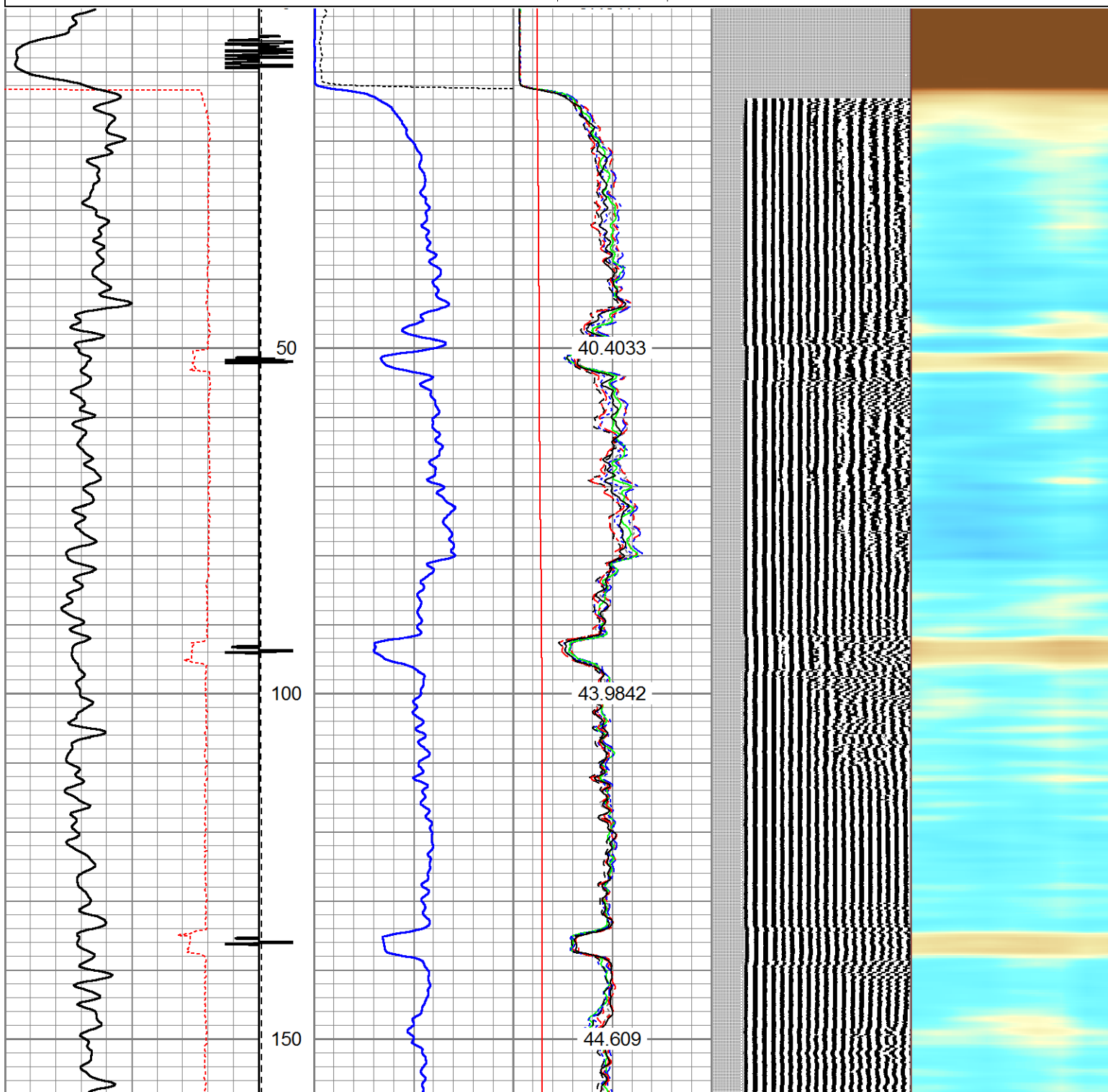
Sensor	Offset (ft)	Schematic	Description	Len (ft)	OD (in)	Wt (lb)
			1.4375CHD Titan Cable Head 1 7/16	1.00	1.44	10.00

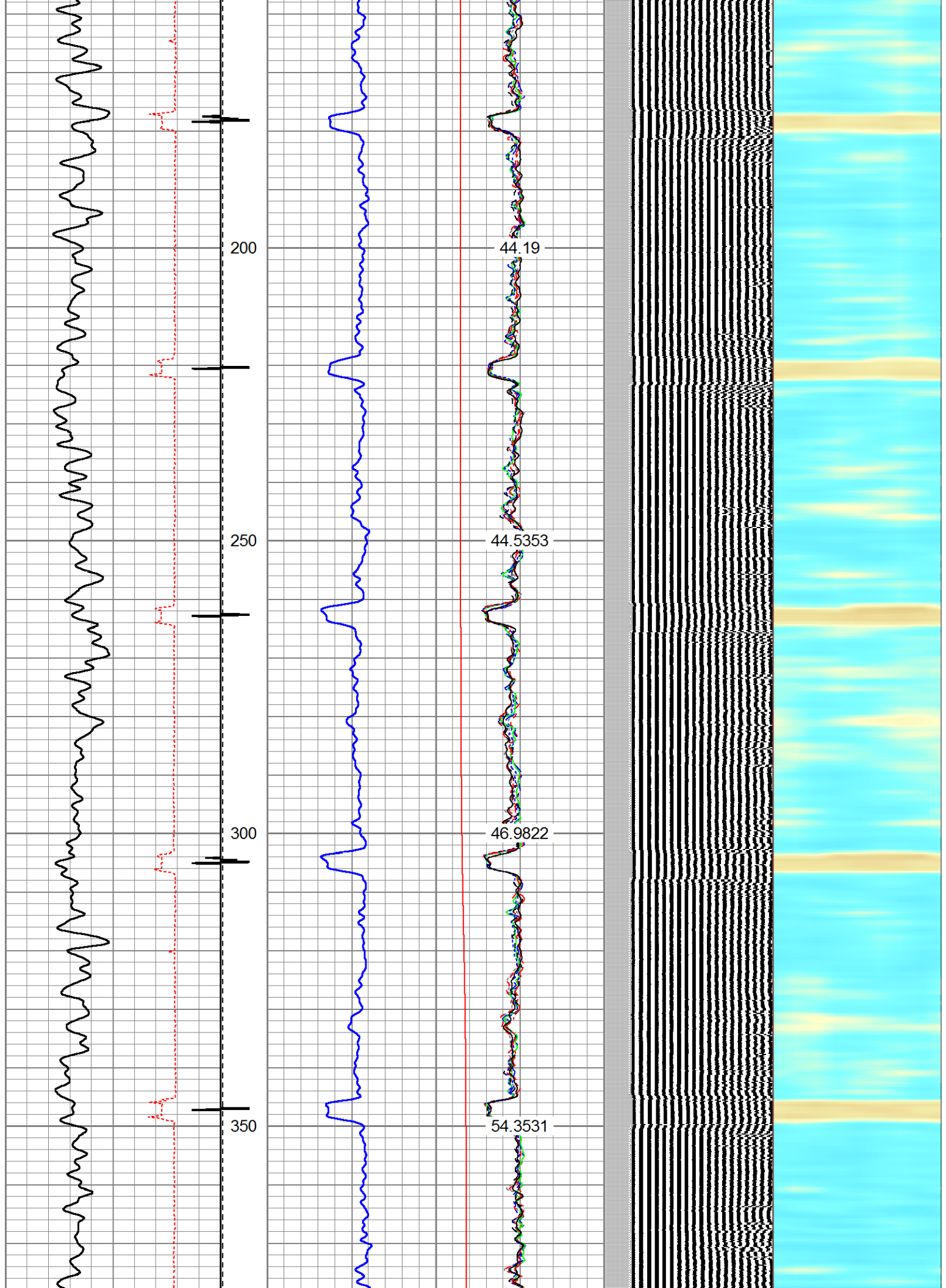
Tool Name	Start Depth (ft)	End Depth (ft)	Length (ft)	Weight (lb)	O.D. (in)
WVF3FT	9.02				
WVFS1	9.02				
WVFS2	9.02				
WVFS3	9.02				
WVFS4	9.02				
WVFS5	9.02				
WVFS6	9.02				
WVFS7	9.02				
WVFS8	9.02				
WVF5FT	8.02				
WVFCAL	4.77				
WVFSYNC	4.77				
RBT_HV	4.77				
ACCX	4.77				
ACCY	4.77				
ACCZ	4.77				
CCL	3.92				
GCT_Temp	3.17				
GR	2.42				
					
<p>RBT8acc-Probe275acc (FW1905-150) 2.75" Radial Corrosion with accelerometer</p> <p>GR-GCT (FW1906-035) Gamma Corrosion Temperature</p>					
			9.20	2.75	110.00
			4.77	2.75	35.00
<p>Dataset: nygren 6-19.db: field/well/run1/pass3</p> <p>Total Length: 14.97 ft</p> <p>Total Weight: 155.00 lb</p> <p>O.D. 2.75 in</p>					

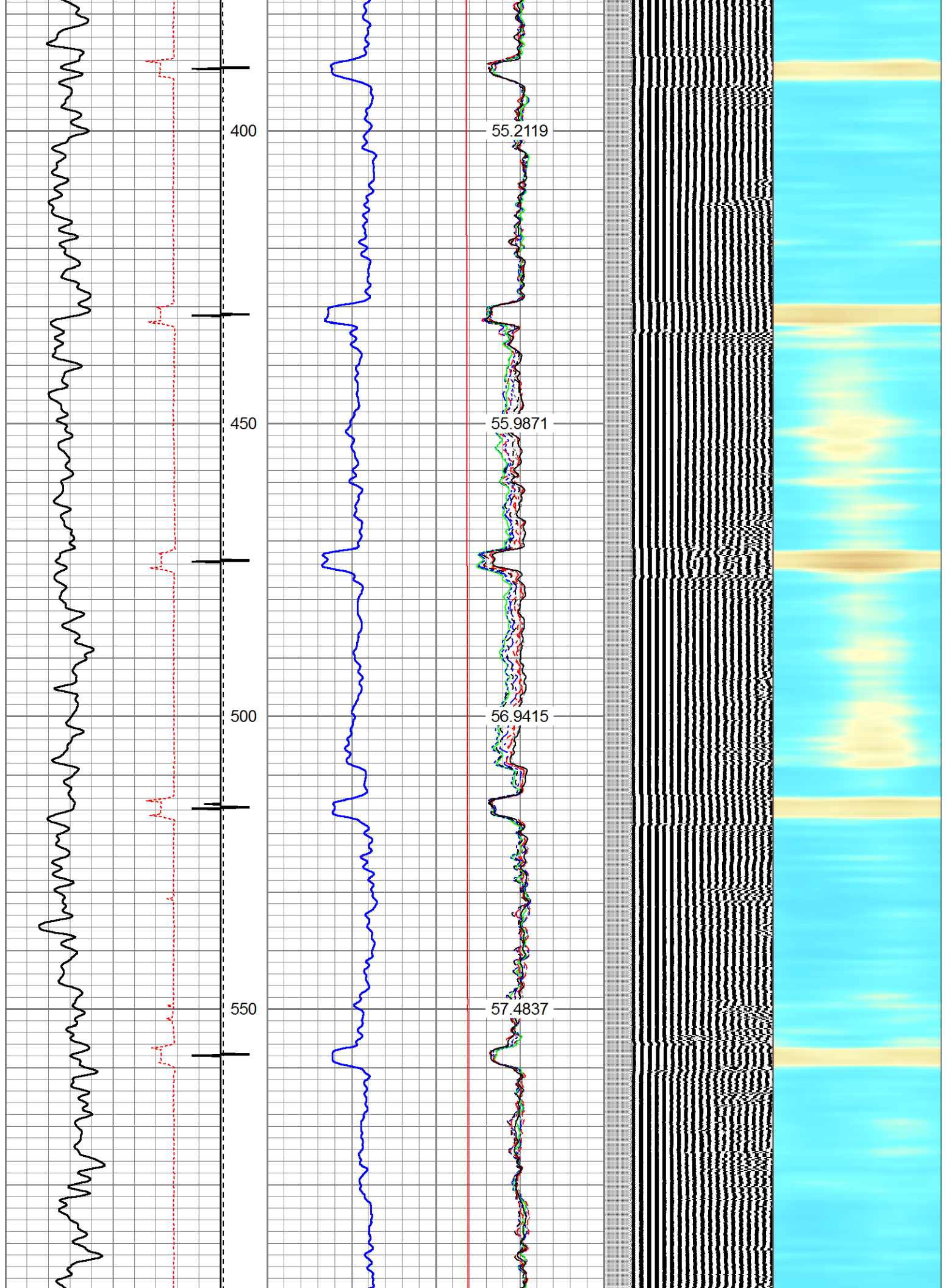
Charted by:

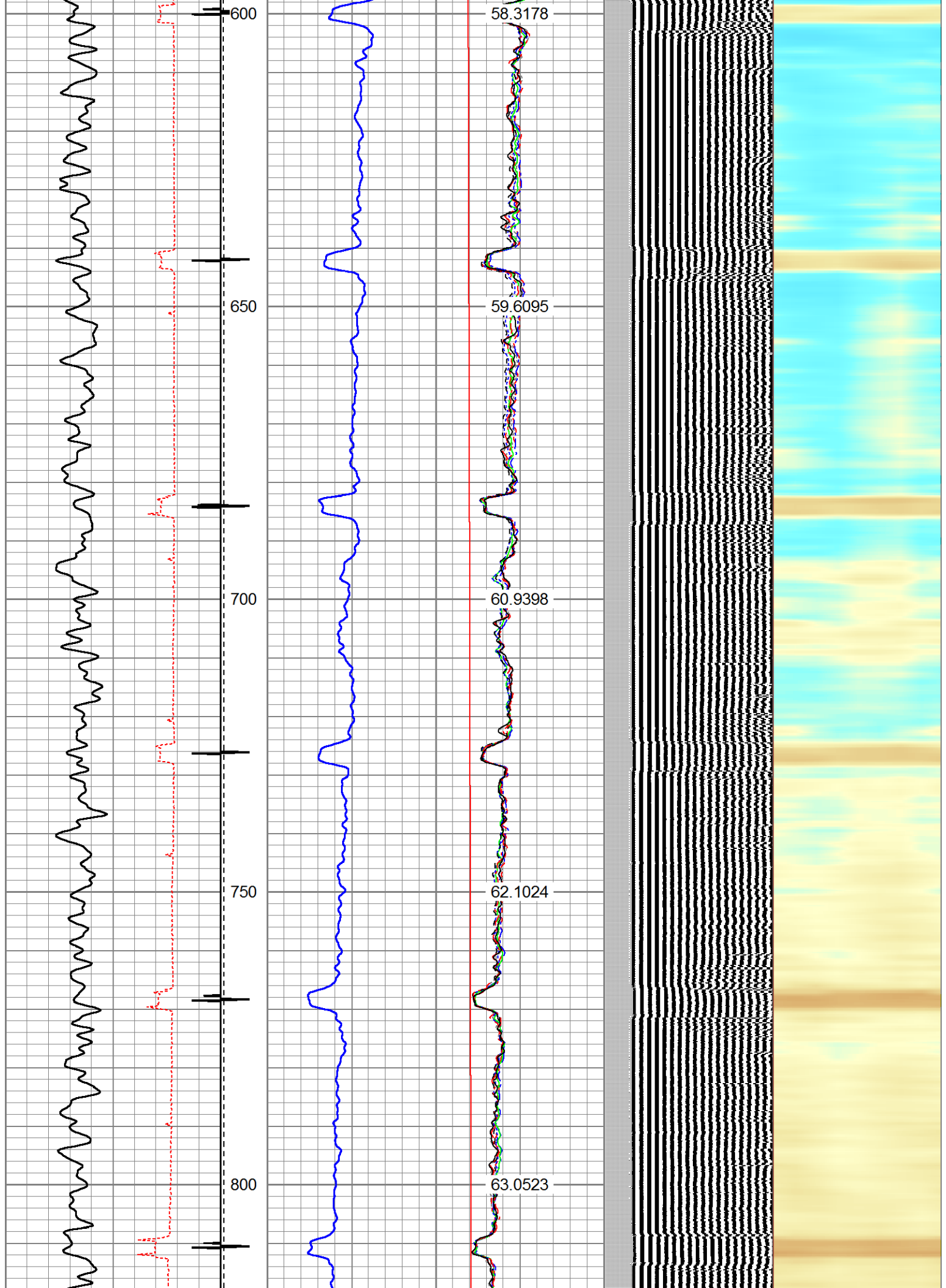
Depth in Feet scaled 1.240

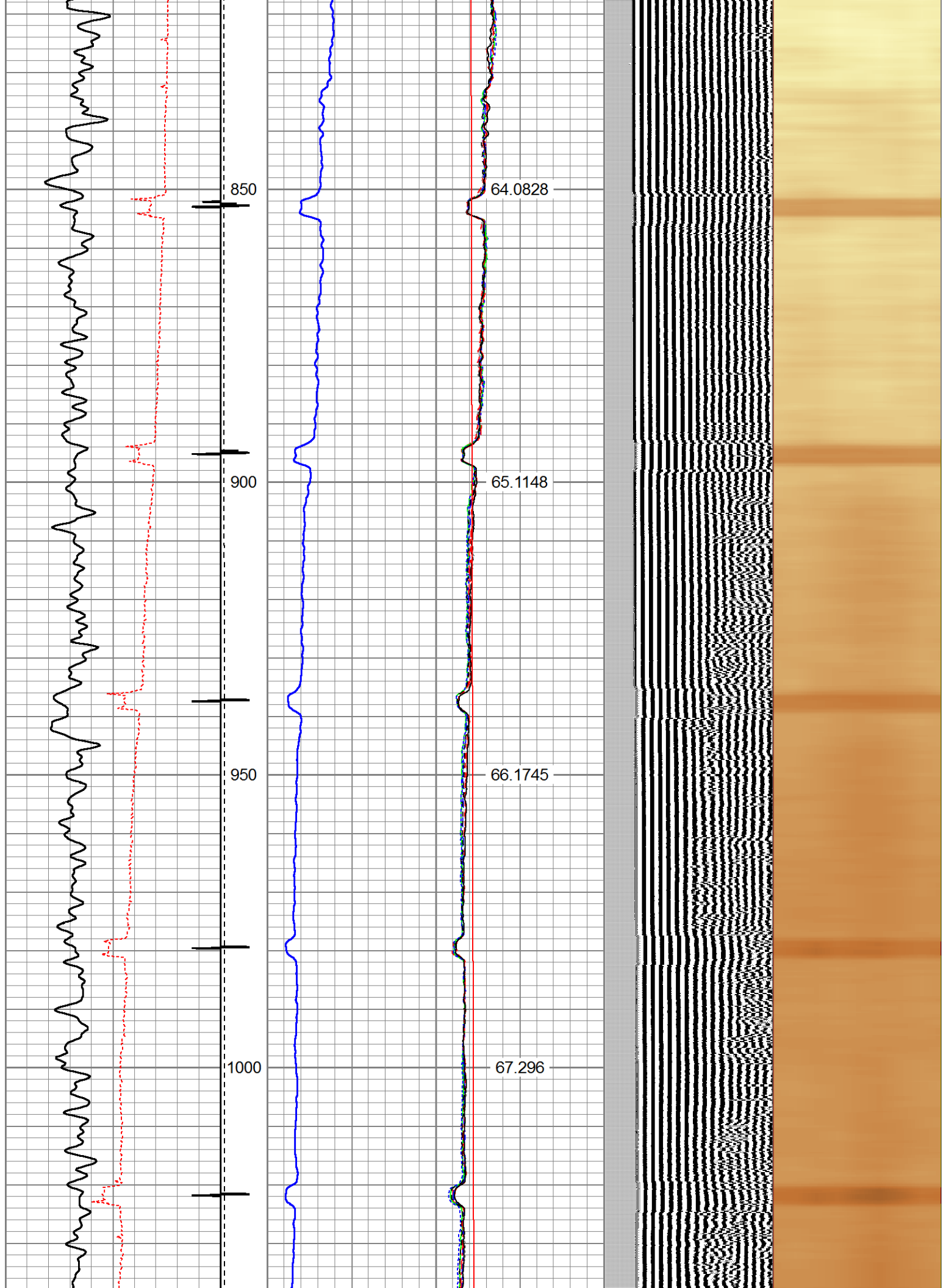
325	TT (usec)	225	LTEN	0	Amplitude (mV)	100	-5	AMPS2	150	200	VDL	1200	Cement Map	
0	GR (GAPI)	200	(lb)	0	Amplified Amplitude		-5	AMPS3	150				1	100
			CCL	000	(mV)	10	-5	AMPS4	150					
							-5	AMPS5	150					
							-5	AMPS6	150					
							-5	AMPS7	150					
							-5	AMPS8	150					
							-5	AMPS1	150					
							GCT_Temp							
							0	(degF)	300					
							GCT_Temp							
							(degF)							

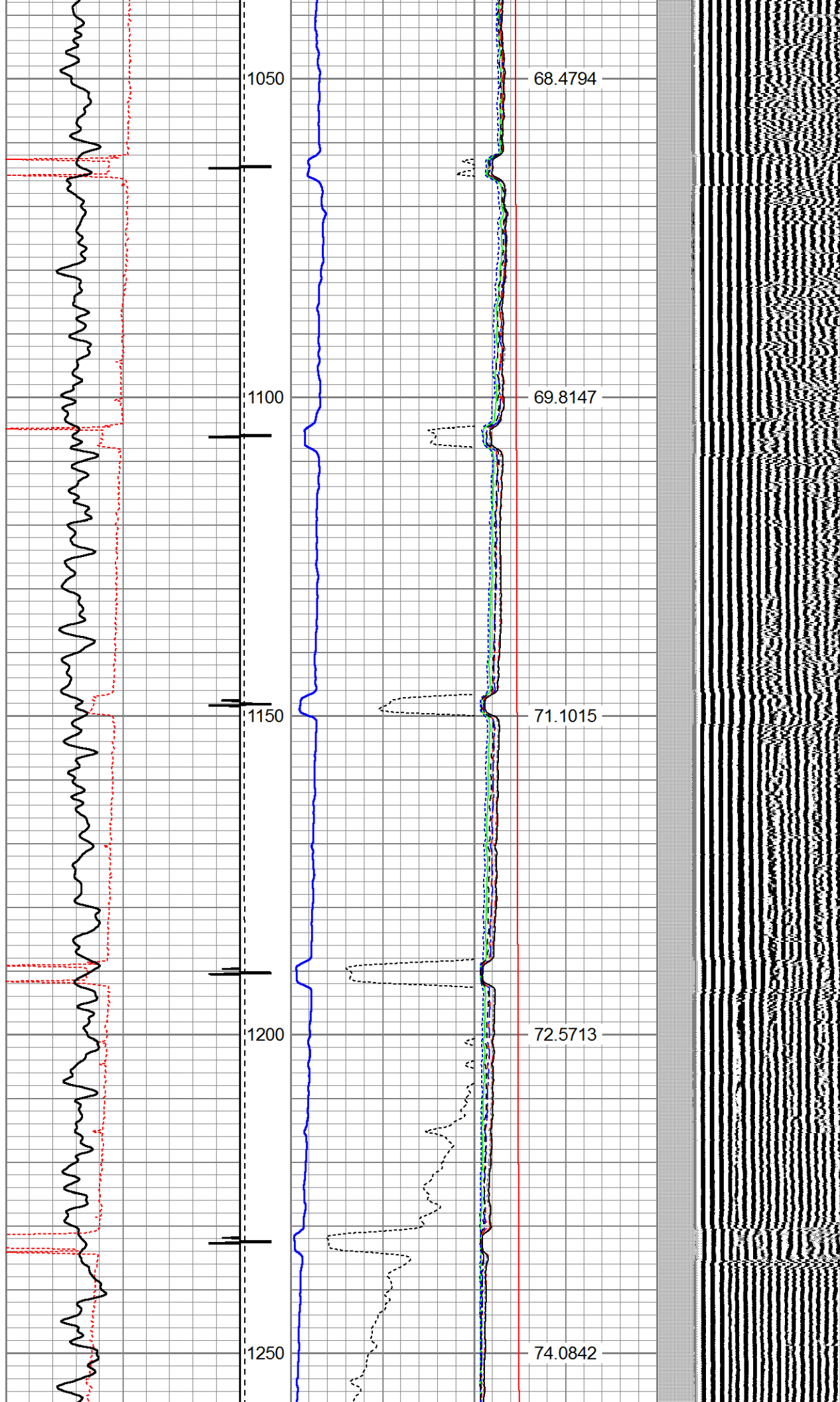


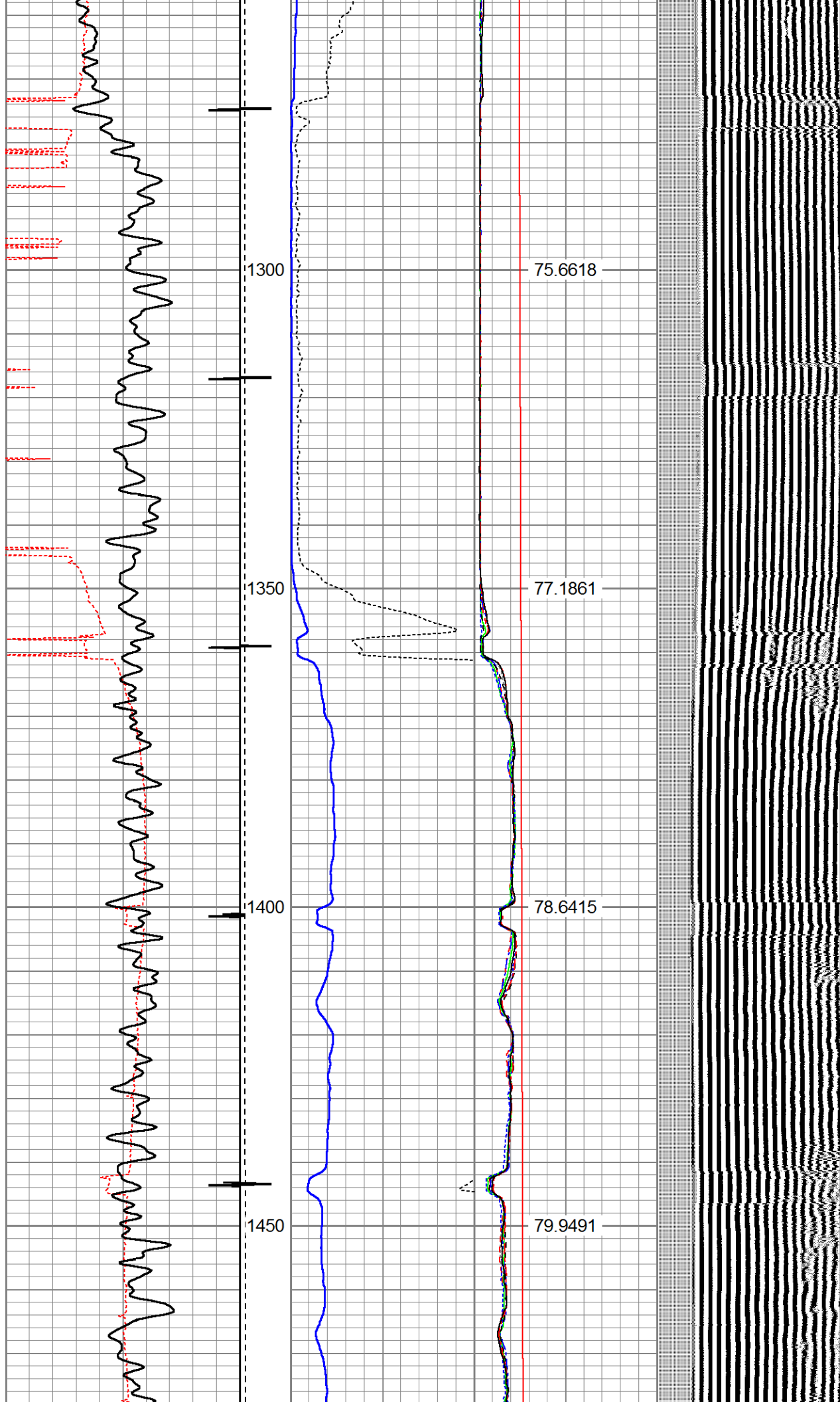


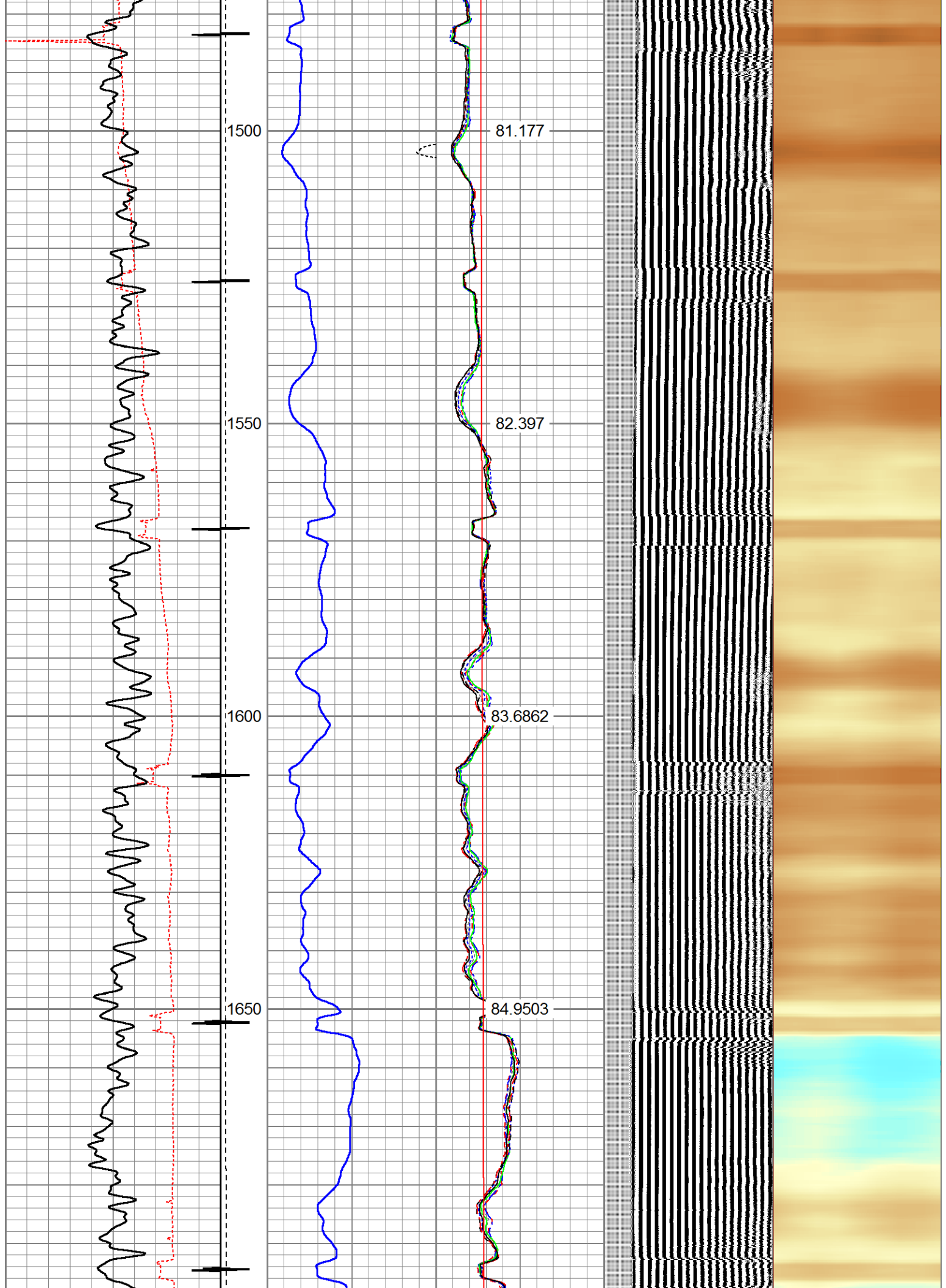


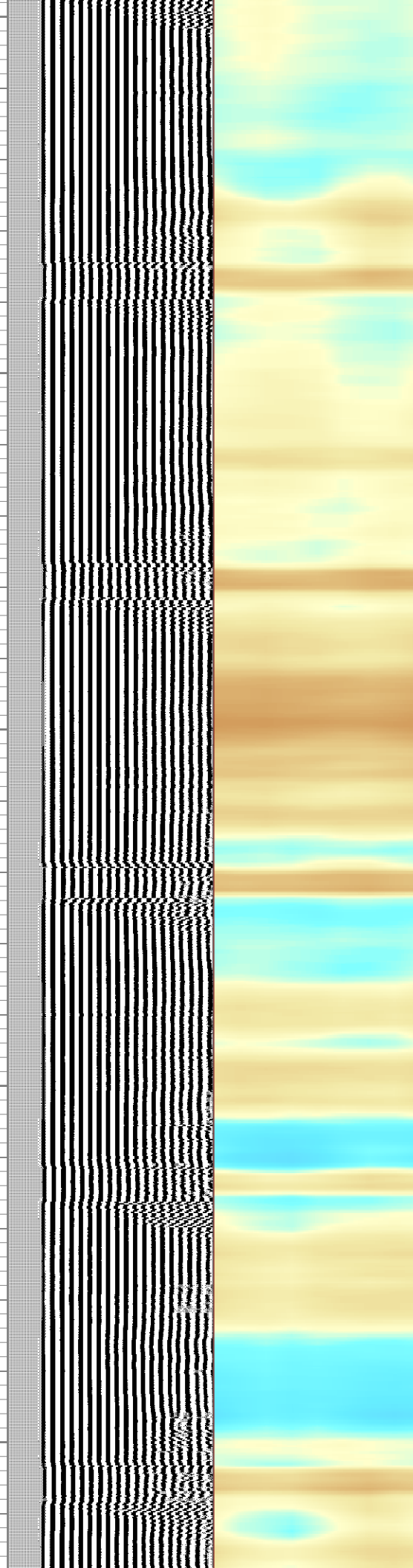
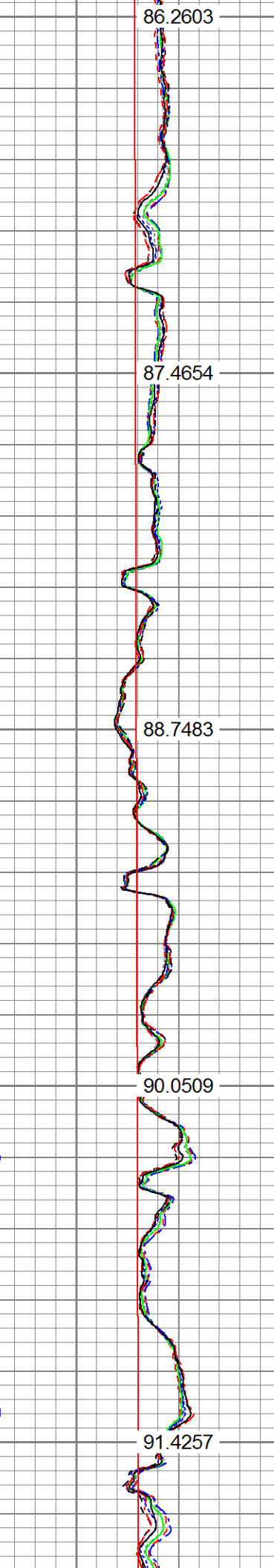
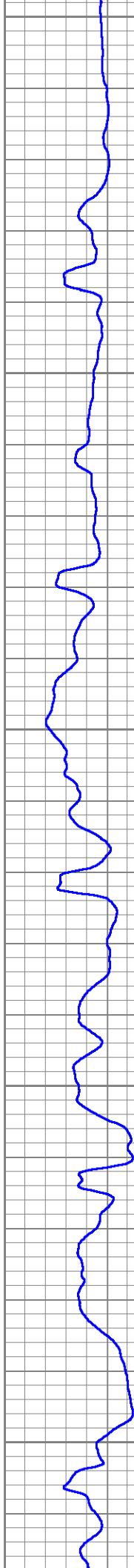
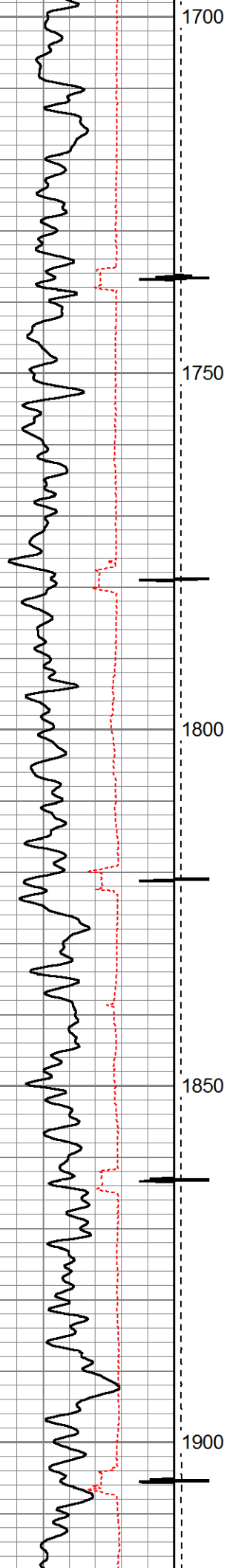


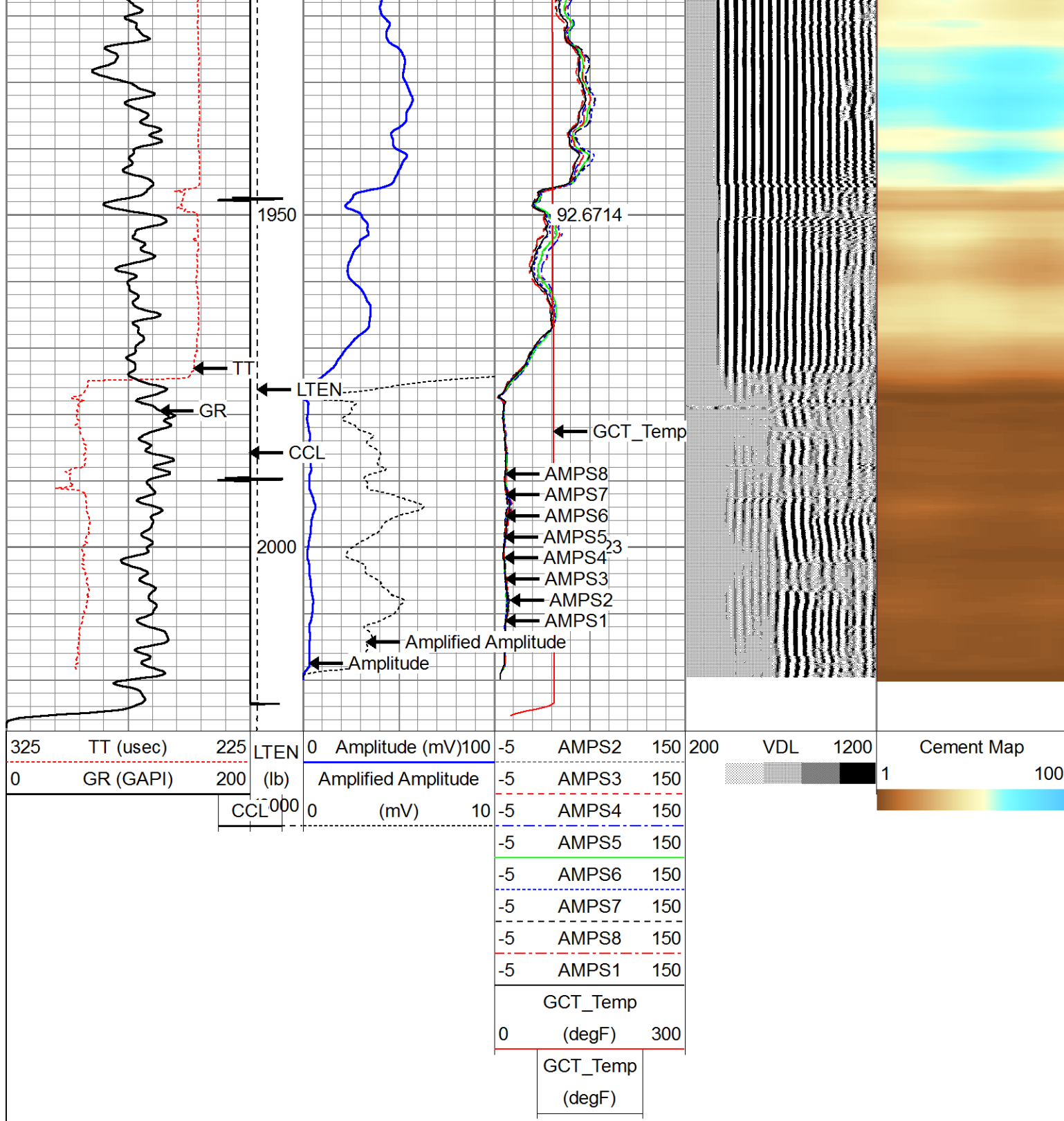












Company: ANADARKO PETROLEUM CORP
 Well: NYGREN 6-19
 Field: WATTENBERG
 County: WELD
 State: COLORADO