



CEMENT BOND LOG
GAMMA RAY CCL VDL

Company	GREAT WESTERN OPERATING COMPANY		
Well	COLORADO STATE #2		
Field	BLACK HOLLOW		
County	WELD		
State	COLORADO		
Location:	API # : 05-123-05454		Other Services
	SESE		NONE
Permanent Datum	SEC 36	TWP 8N	RGE 67W
Log Measured From	GL		Elevation 5,129'
Drilling Measured From	KB		Elevation K.B. 5,139' D.F. 5,138' G.L. 5,129'

Date	10 MAY 2019
Run Number	ONE
Depth Driller	9,032'
Depth Logger	1,525'
Bottom Logged Interval	1,520'
Top Log Interval	SURFACE
Open Hole Size	N/A
Type Fluid	WATER
Density / Viscosity	8.34 PPG
Max. Recorded Temp.	N/A
Estimated Cement Top	SEE LOG
Time Well Ready	08:00
Time Logger on Bottom	08:30
Equipment Number	25
Location	PLATTEVILLE, CO
Recorded By	B. TURNBULL
Witnessed By	D. LANG

Borehole Record				Tubing Record			
Run Number	Bit	From	To	Size	Weight	From	To
Casing Record	Size			Wgt/Ft		Top	Bottom
Surface String	9-5/8"			36#		SURFACE	324'
Prot. String							
Production String	5-1/2"			15.5#/17#		SURFACE	9,022'
Liner							

<<< Fold Here >>>

All interpretations are opinions based on inferences from electrical or other measurements and we cannot and do not guarantee the accuracy or correctness of any interpretation, and we shall not, except in the case of gross or willful negligence on our part, be liable or responsible for any loss, costs, damages, or expenses incurred or sustained by anyone resulting from any interpretation made by any of our officers, agents or employees. These interpretations are also subject to our general terms and conditions set out in our current Price Schedule.

Comments

CEMENT BOND LOG RECORDED AS PER CUSTOMER REQUEST
LOG RECORDED USING 10' KB & 0 PSI INDUCED SURFACE PRESSURE

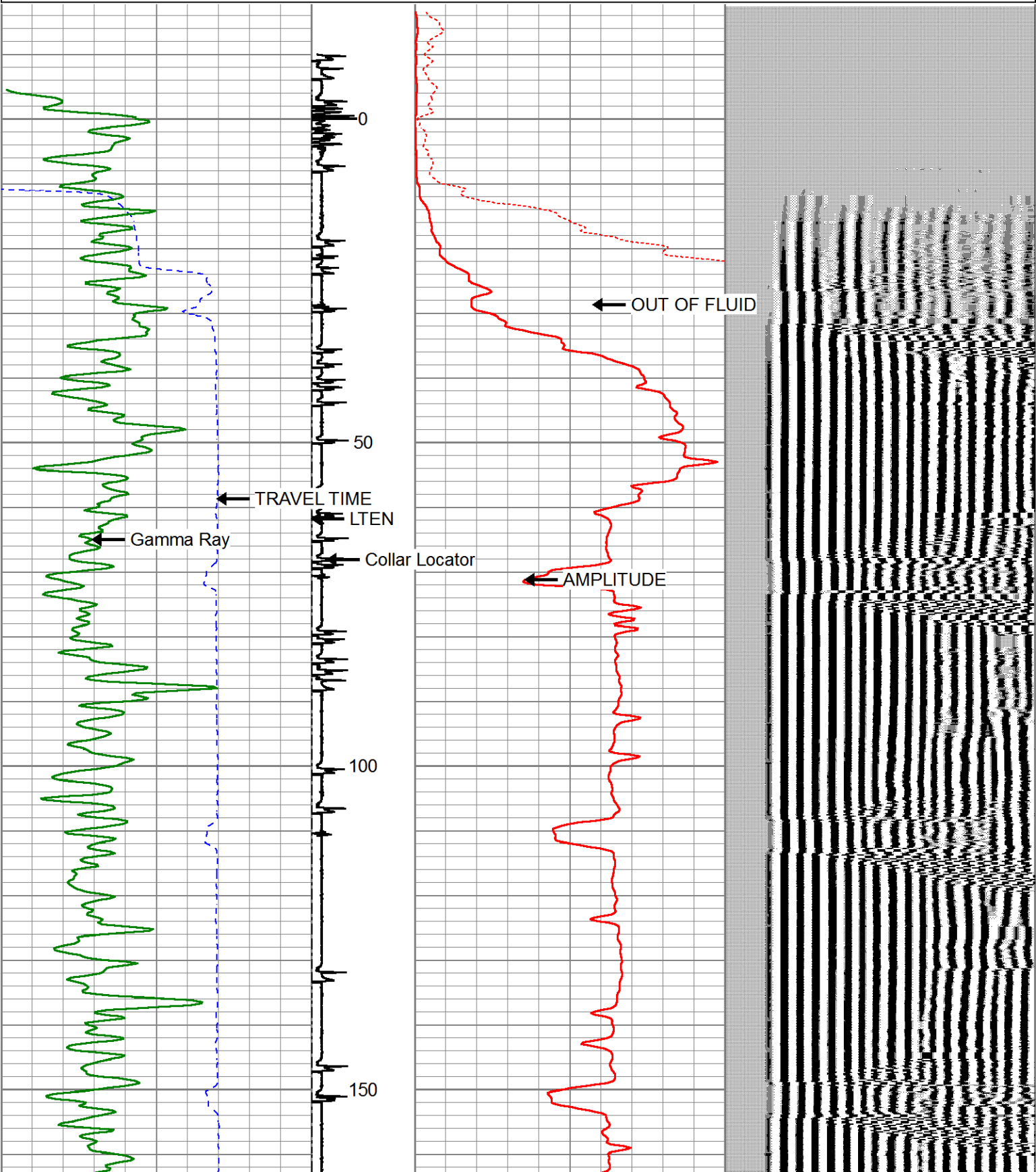
THANK YOU FOR USING KLX ENERGY SERVICES

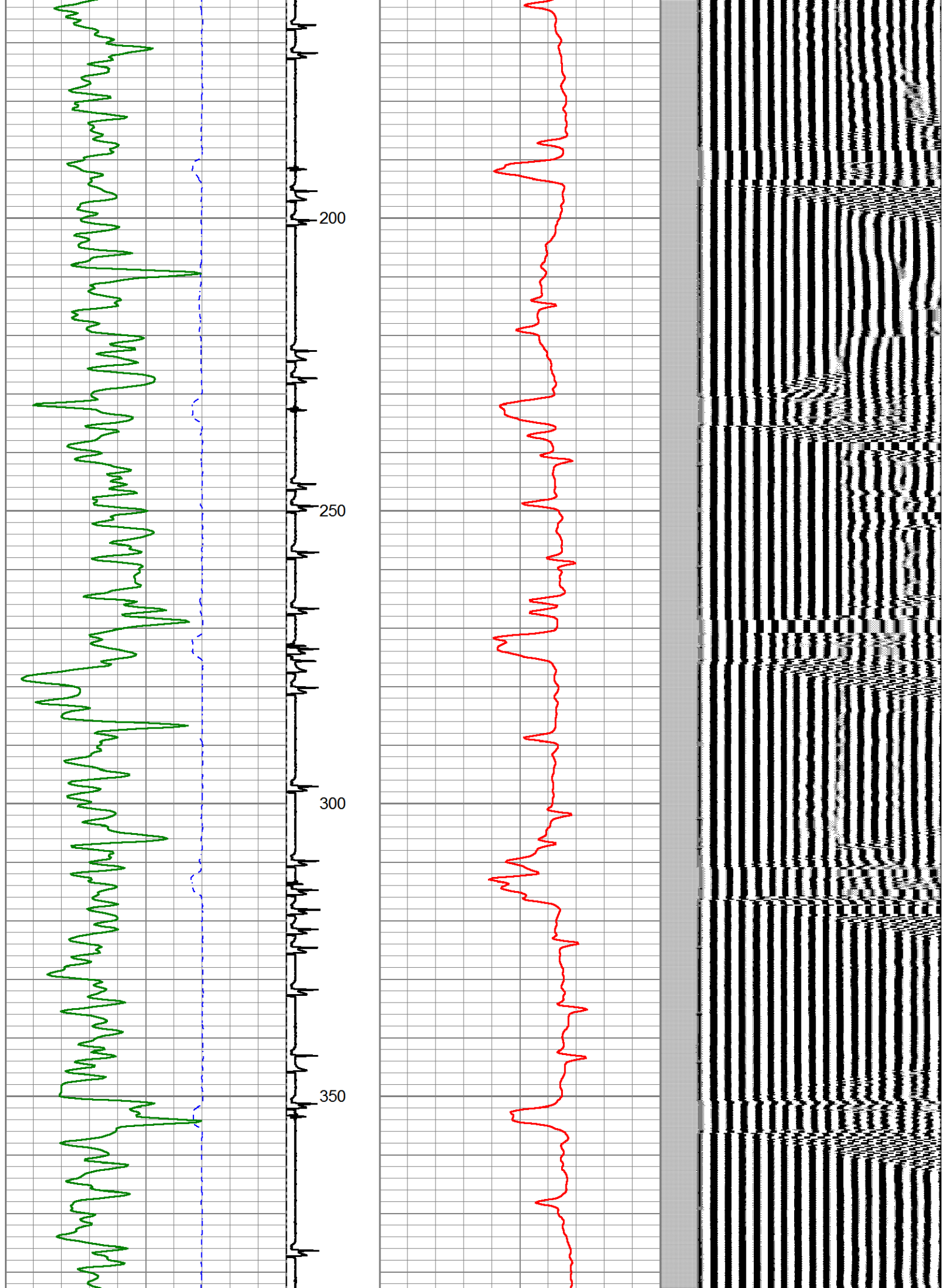


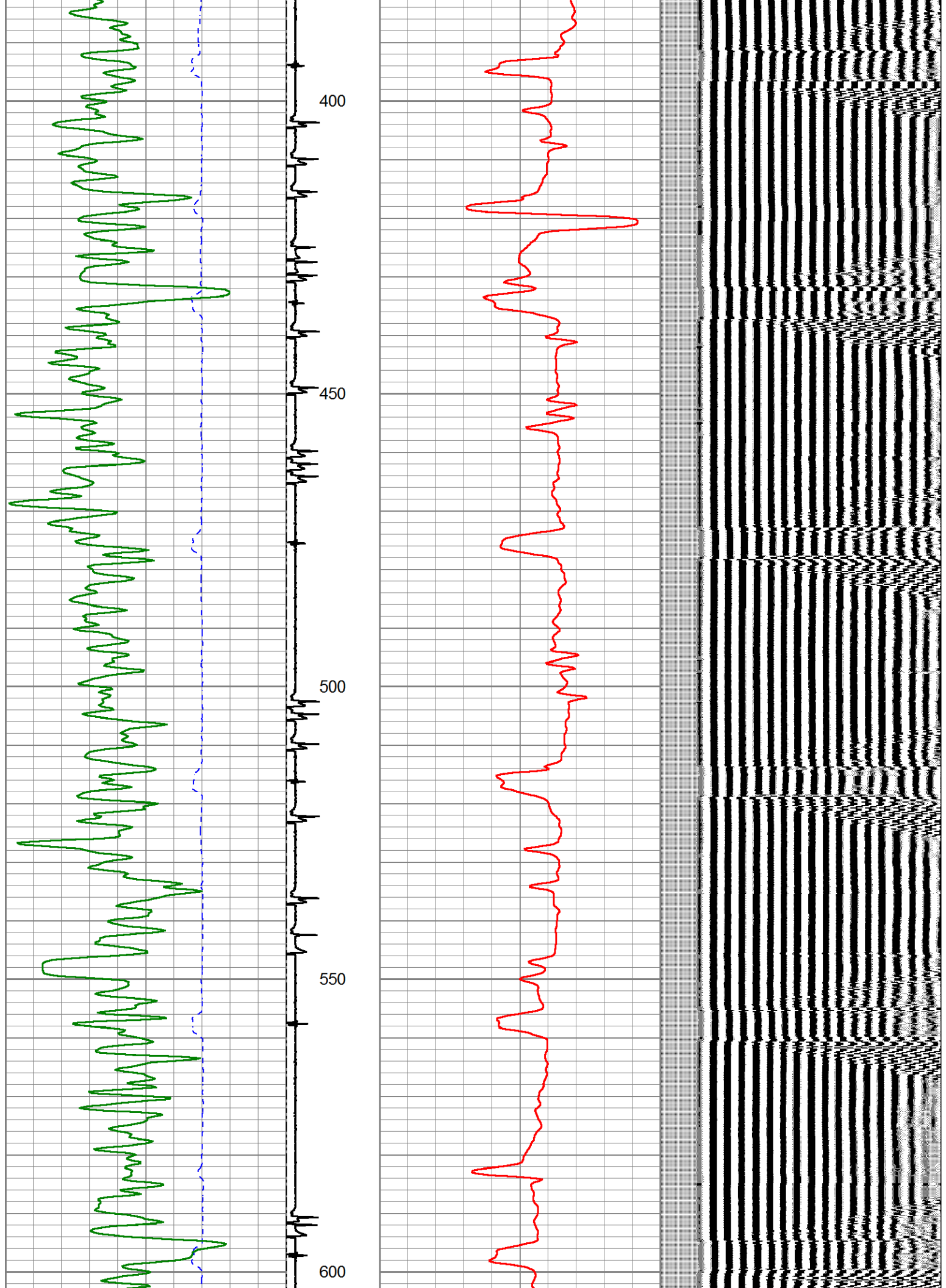
5-1/2" MAIN PASS

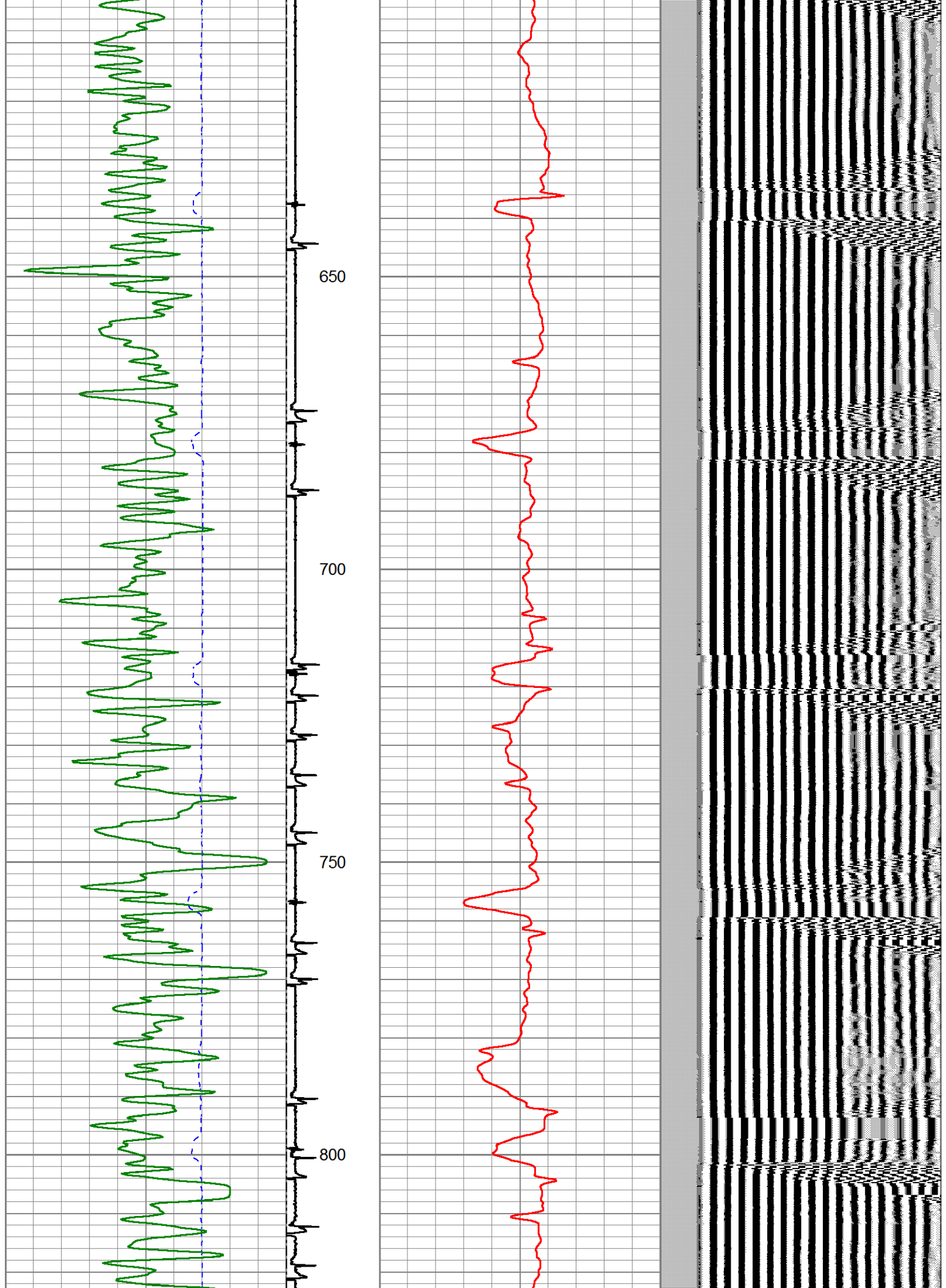
Database File	gw_costate2_cbl_5-10-19.db
Dataset Pathname	pass1.1
Presentation Format	cbl_drs
Dataset Creation	Fri May 10 09:01:26 2019
Charted by	Depth in Feet scaled 1:240

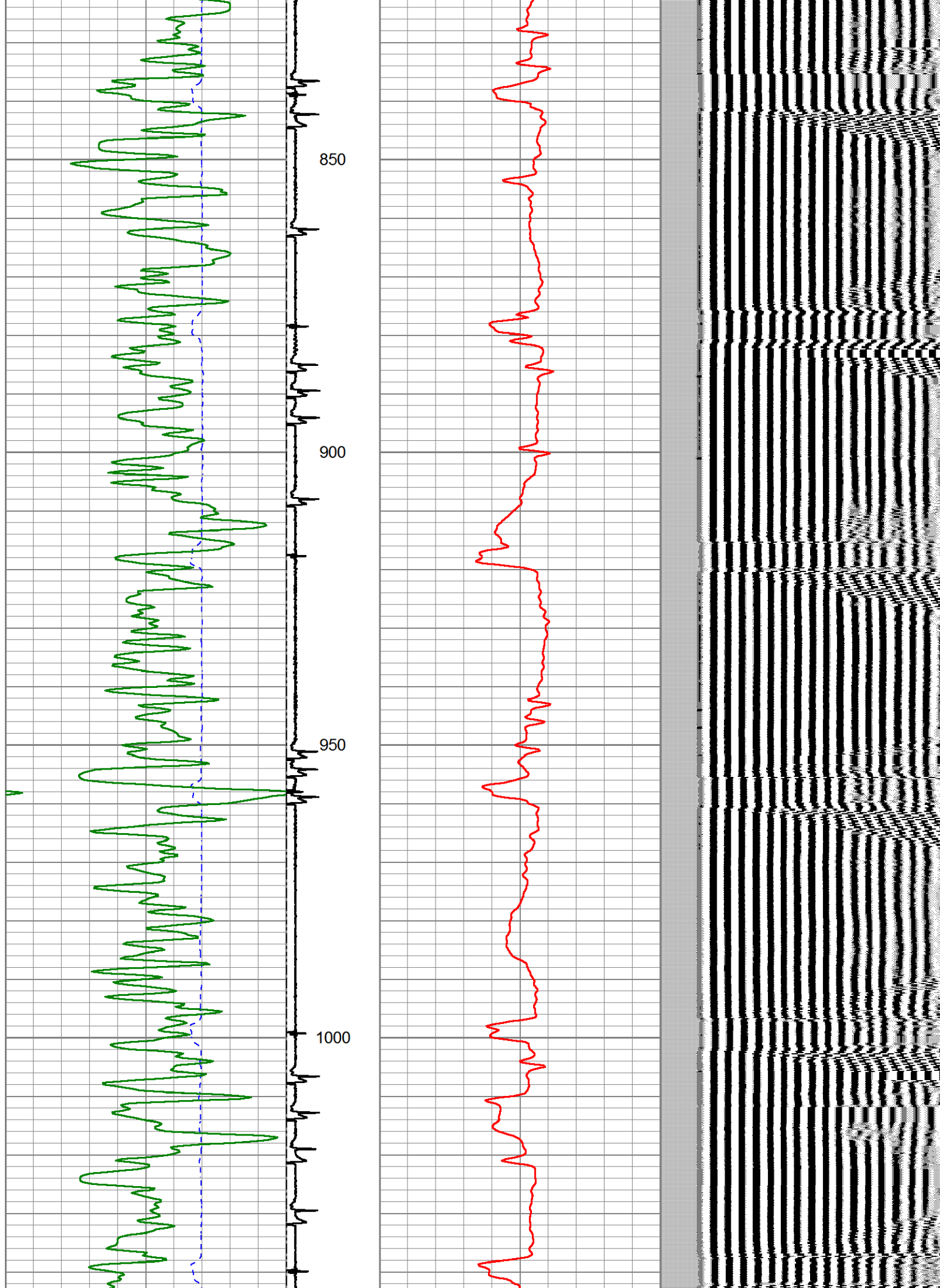
400	TRAVEL TIME (usec)	200	Collar Locator	0	AMP AMPLITUDE (mV)	10	200	VDL (usec)	1200
0	Gamma Ray (GAPI)	150	-1	9 0	AMPLITUDE (mV)	100			
			LTEN						
			0 (lb2000)						

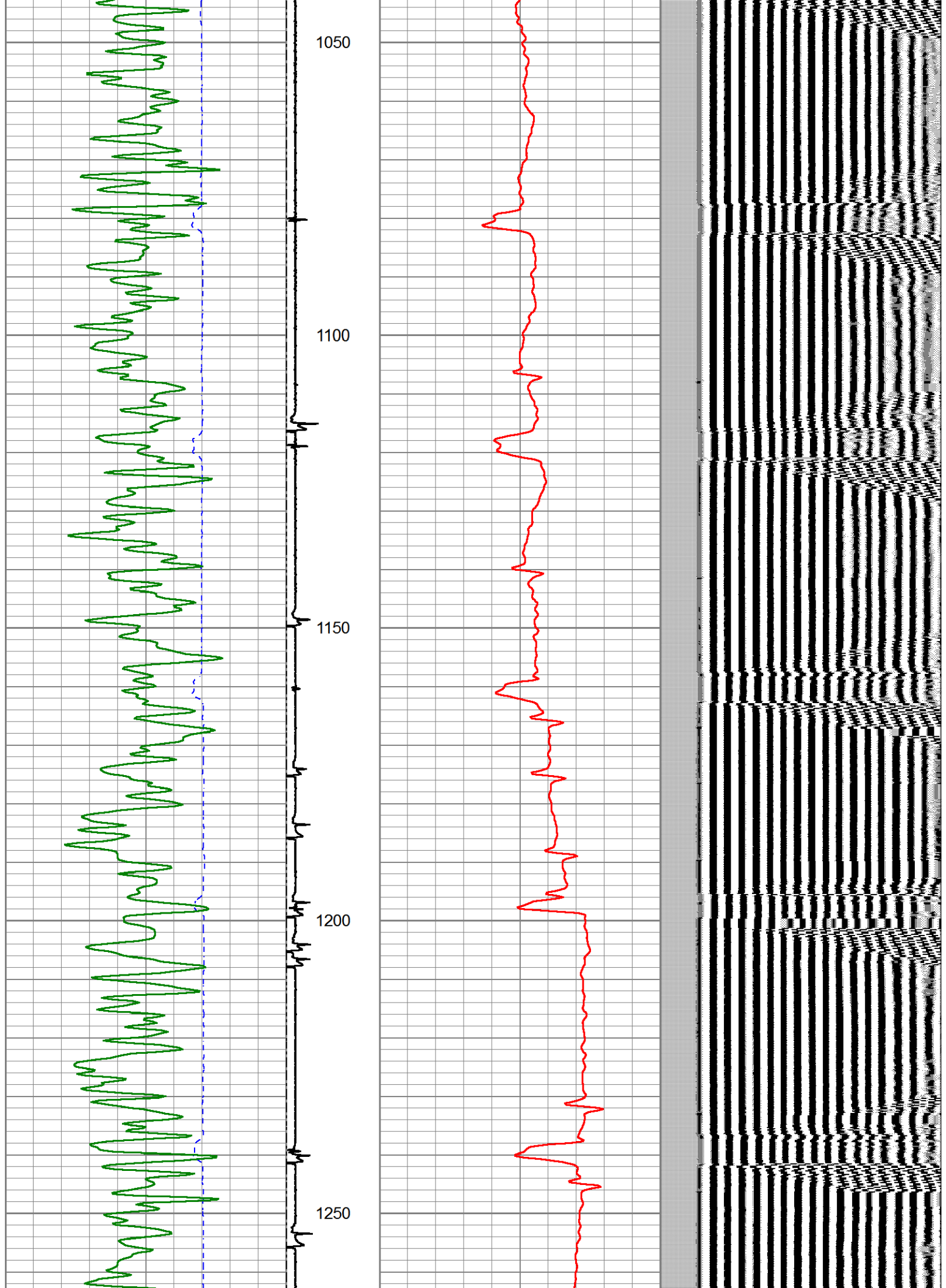


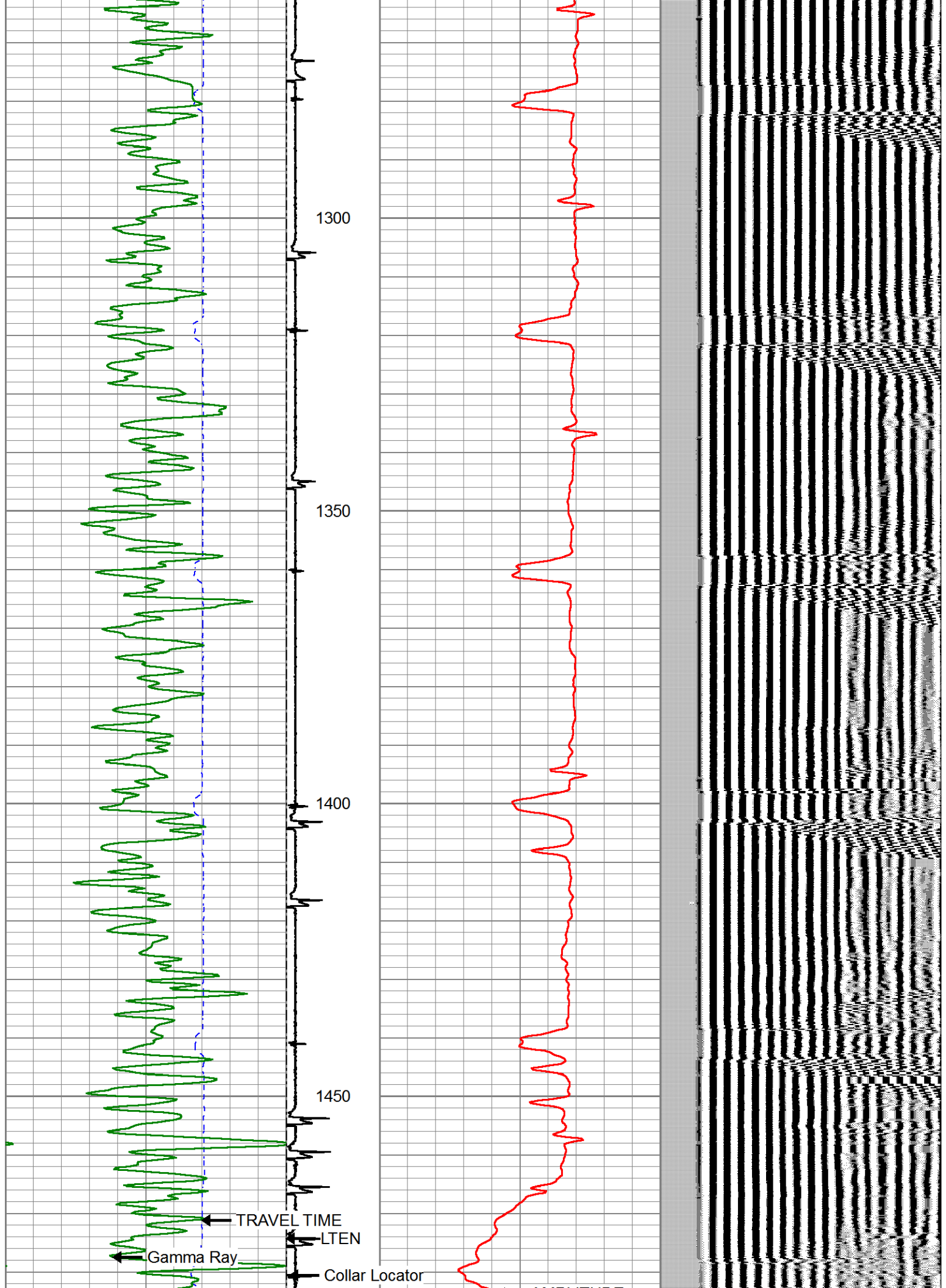


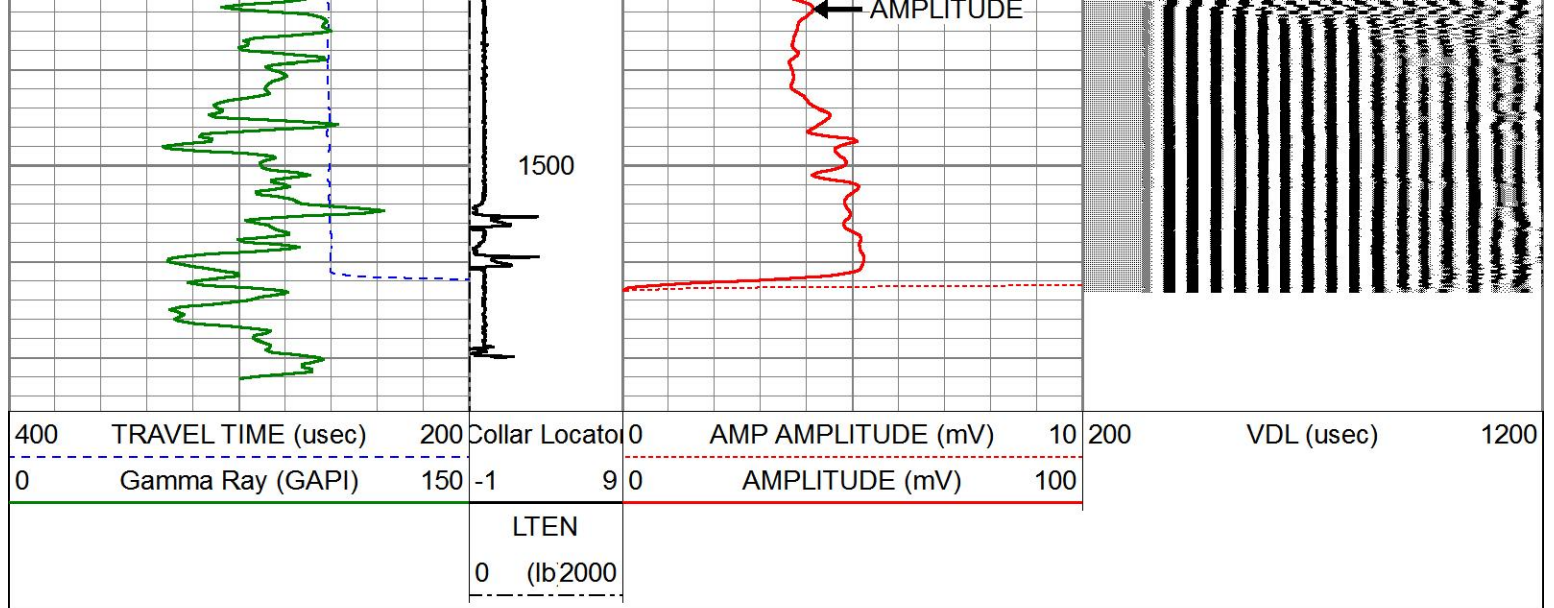













Sensor	Offset (ft)	Schematic	Description	Length (ft)	O.D. (in)	Weight (lb)
			CHD-Titan Titan 1 7/16" GO Cablehead	1.00	1.44	5.00
			CENT-Probe275 2.75" Centralizer	2.88	2.75	36.00
			RBT-Probe 2.75 Radii HT (080840) RADII HT	11.28	2.75	130.00
WVFS8	13.42					
WVFS7	13.42					
WVFS6	13.42					
WVFS5	13.42					
WVFS4	13.42					
WVFS3	13.42					
WVFS2	13.42					
WVFS1	13.42					
WVFCAL	13.42					
WVF3FT	13.42					
WVF5FT	12.42		CENT-Probe275 2.75" Centralizer	2.88	2.75	36.00

CCL	5.44				
GR	1.42				
Dataset: gw_costate2_cbl_5-10-19.db: field/well/run1/pass1.1 Total length: 24.39 ft Total weight: 264.00 lb O.D.: 2.75 in					