

Inspection Photos

Operator: Hilcorp Energy
API#: 067-05815
Date: 3/24/2020

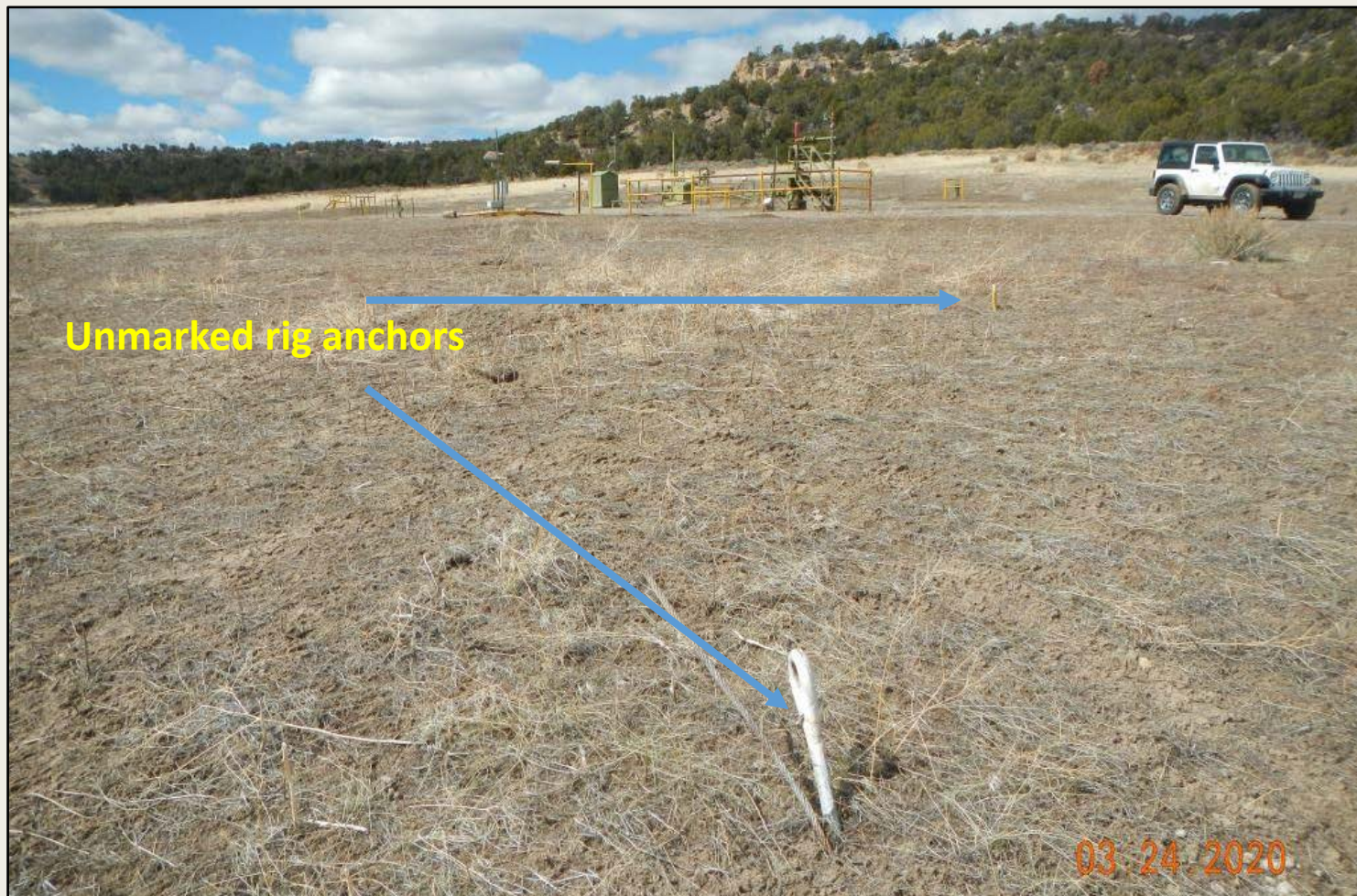


Photo 1. View of the project area from the northeastern corner facing center. Multiple unmarked rig anchors observed throughout the project area.



Photo 2. View of the eastern fill slope from the northeastern edge facing southward. Slope is largely comprised of bare soils. Erosional rilling observed along slope.



Photo 3. View of unused equipment on the well pad.



Photo 4. View of cement debris on the well pad.

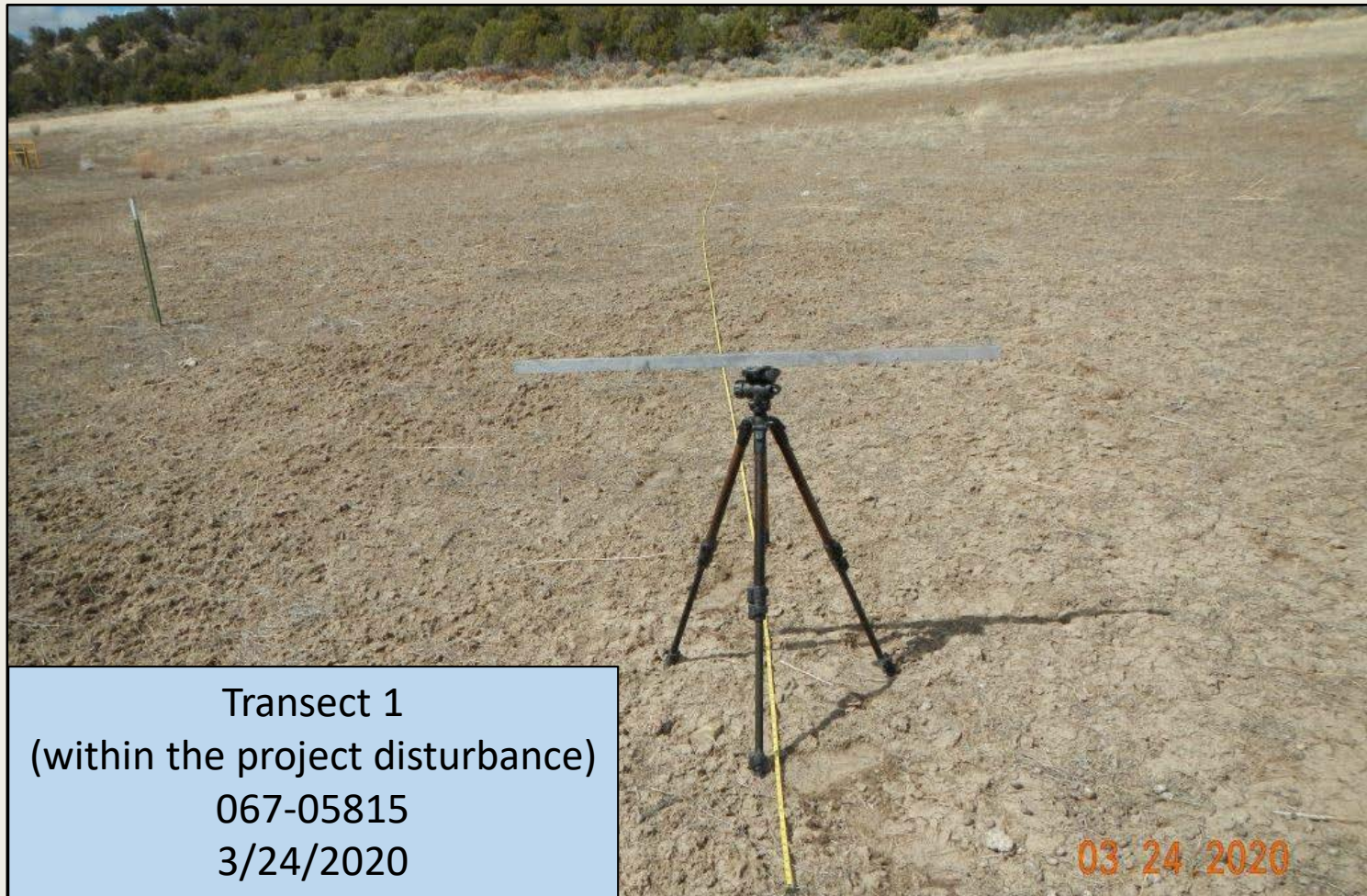


Photo 5. View of the beginning of Transect 1, within the project area, facing westward.



Photo 6. Birdseye view from the midpoint of Transect 1, within the project disturbance. No desirable vegetation observable.

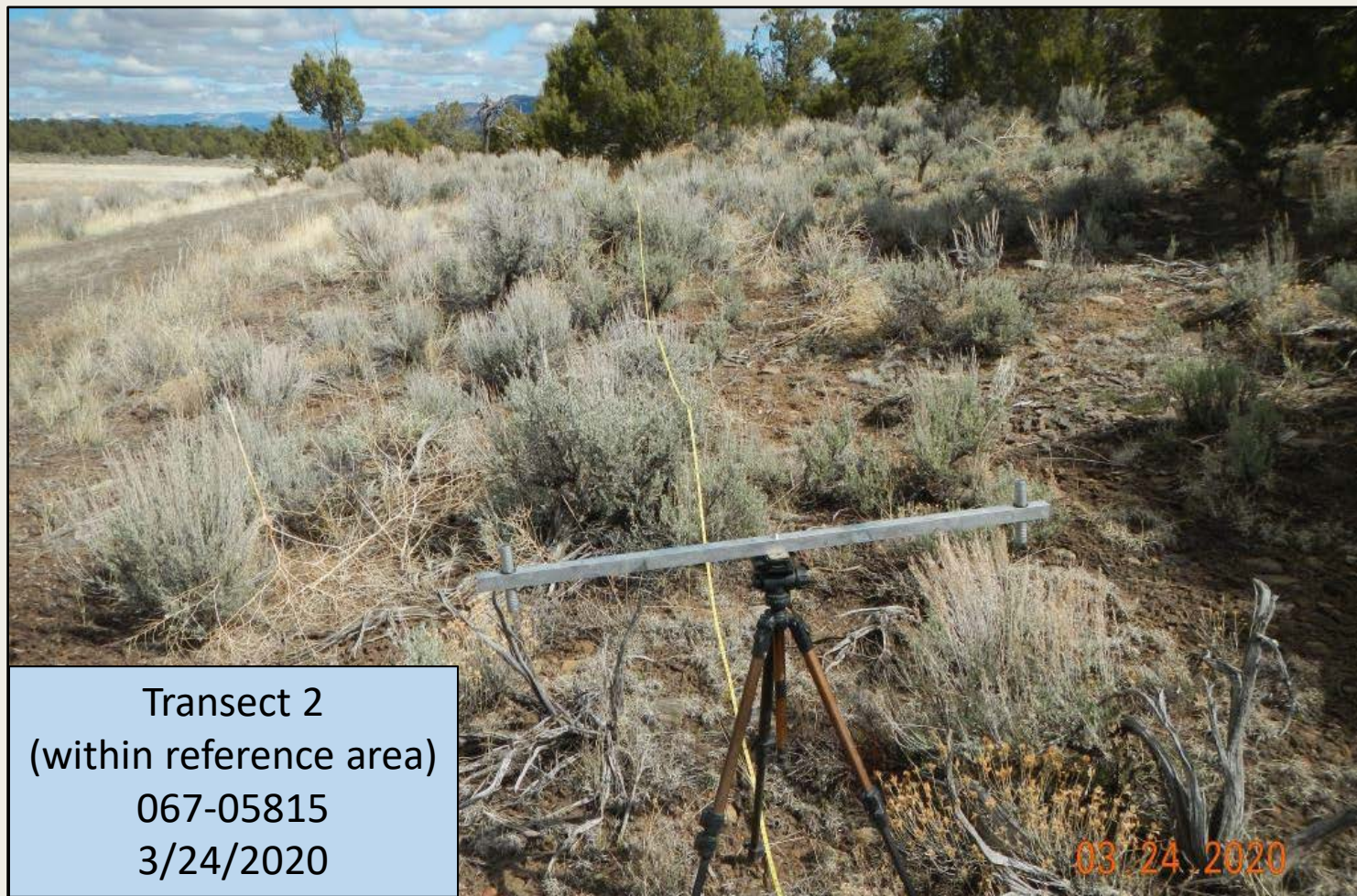


Photo 7. View of reference area, comprised of sagebrush shrubland, dominated by big sagebrush with grasses and forbs such as blue grama, James galleta, and yellow rabbitbrush.



Photo 8. Birdseye view of vegetation at transect midpoint.