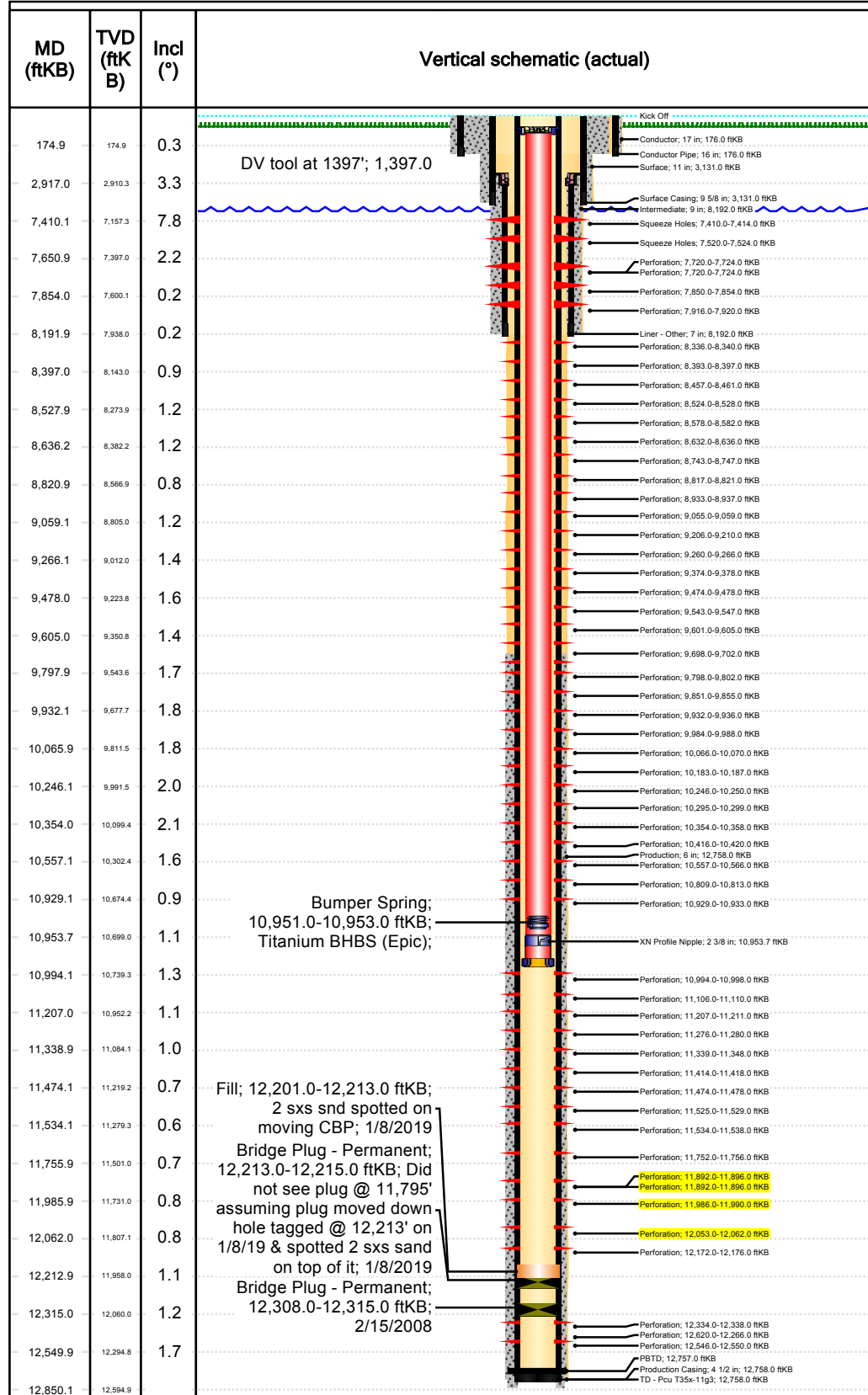




Downhole Well Profile - with Schematic

Well Name: Pcu T35x-11g3

API/UWI 05103105270000	SAP Cost Center ID 1545144001	Permit Number 20042435	State/Province Colorado		County Rio Blanco		
Surface Location T02S-R97W-S11			Spud Date 3/18/2005 00:00	Original KB Elevation (ft) 7,016.00	Ground Elevation (ft) 6,991.00	KB-Ground Distance (ft) 25.00	Surface Casing Flange Elevation (ft)



Wellbores									
Wellbore Name Pcu T35x-11g3			Parent Wellbore Pcu T35x-11g3			Wellbore API/UWI 051031052700			
Start Depth (ftKB)					Profile Type Deviated				
Section Des		Size (in)		Act Top (ftKB)		Act Btm (ftKB)			
Conductor		17		0.0		176.0			
Surface		11		176.0		3,131.0			
Intermediate		9		3,131.0		8,192.0			
Production		6		8,192.0		12,758.0			
Zones									
Zone Name		Top (ftKB)		Btm (ftKB)		Current Status			
Ohio Creek		7,379.0		7,651.0		Active			
Williams Fork - Cameo		7,651.0		11,570.0		Active			
Rollins		11,570.0		11,765.0		Active			
Cozette		11,765.0		12,045.0		Active			
Corcoran		12,045.0		12,757.0		Inactive			
Casing Strings									
Csg Des		Set Depth (ftKB)		OD (in)		Wt/Len (lb/ft)		Grade	
Conductor Pipe		176.0		16				Unknown	
Surface Casing		3,131.0		9 5/8		47.00		P-110	
Liner - Other		8,192.0		7		26.00		P-110	
Production Casing		12,758.0		4 1/2		15.10		P-110	
Cement									
Des			Type				String		
Primary Single			Casing				Conductor Pipe, 176.0ftKB		
Primary Single			Casing				Surface Casing, 3,131.0ftKB		
Primary Single			Casing				Liner - Other, 8,192.0ftKB		
Primary Single			Casing				Production Casing, 12,758.0ftKB		
Tubing Strings									
Tubing Description Tubing - Production				Run Date 1/8/2019			Set Depth (ftKB) 10,988.1		
Item Des		OD (in)	Wt (lb/ft)	Grade	Jts	Len (ft)	Top (ftKB)		Btm (ftKB)
KB					1	25.00	0.0		25.0
Tubing Hanger		4 1/16			1	0.45	25.0		25.5
Tubing		2 3/8	4.70	L-80	333	10,928.27	25.5		10,953.7
XN Profile Nipple		2 3/8			1	1.37	10,953.7		10,955.1
Tubing		2 3/8	4.70	L-80	1	32.58	10,955.1		10,987.7
Wireline Guide		3 1/16			1	0.40	10,987.7		10,988.1
Other In Hole									
Run Date		Des		OD (in)		Top (ftKB)		Btm (ftKB)	
2/15/2008		Bridge Plug - Permanent		3.826		12,308.0		12,315.0	
1/8/2019		Bridge Plug - Permanent		4		12,213.0		12,215.0	
1/8/2019		Fill		4		12,201.0		12,213.0	
2/10/2019		Bumper Spring		1.92		10,951.0		10,953.0	



Downhole Well Profile - with Schematic

Well Name: Pcu T35x-11g3

API/UWI 05103105270000	SAP Cost Center ID 1545144001	Permit Number 20042435	State/Province Colorado		County Rio Blanco		
Surface Location T02S-R97W-S11			Spud Date 3/18/2005 00:00	Original KB Elevation (ft) 7,016.00	Ground Elevation (ft) 6,991.00	KB-Ground Distance (ft) 25.00	Surface Casing Flange Elevation (ft)

MD (ftKB)	TVD (ftKB)	Incl (°)	Vertical schematic (actual)
174.9	174.9	0.3	DV tool at 1397'; 1,397.0
2,917.0	2,910.3	3.3	
7,410.1	7,157.3	7.8	Squeeze Holes; 7,410.0-7,414.0 ftKB
7,650.9	7,397.0	2.2	
7,854.0	7,600.1	0.2	Perforation; 7,720.0-7,724.0 ftKB
8,191.9	7,938.0	0.2	
8,397.0	8,143.0	0.9	Perforation; 7,850.0-7,854.0 ftKB
8,527.9	8,273.9	1.2	
8,636.2	8,382.2	1.2	Perforation; 7,916.0-7,920.0 ftKB
8,820.9	8,566.9	0.8	
9,059.1	8,805.0	1.2	Perforation; 7,850.0-7,854.0 ftKB
9,266.1	9,012.0	1.4	
9,478.0	9,223.8	1.6	Perforation; 7,720.0-7,724.0 ftKB
9,605.0	9,350.8	1.4	
9,797.9	9,543.6	1.7	Perforation; 7,850.0-7,854.0 ftKB
9,932.1	9,677.7	1.8	
10,065.9	9,811.5	1.8	Perforation; 7,916.0-7,920.0 ftKB
10,246.1	9,991.5	2.0	
10,354.0	10,099.4	2.1	Perforation; 7,850.0-7,854.0 ftKB
10,557.1	10,302.4	1.6	
10,929.1	10,674.4	0.9	Perforation; 7,720.0-7,724.0 ftKB
10,953.7	10,699.0	1.1	
10,994.1	10,739.3	1.3	Perforation; 7,850.0-7,854.0 ftKB
11,207.0	10,952.2	1.1	
11,338.9	11,084.1	1.0	Perforation; 7,916.0-7,920.0 ftKB
11,474.1	11,219.2	0.7	
11,534.1	11,279.3	0.6	Perforation; 7,850.0-7,854.0 ftKB
11,755.9	11,501.0	0.7	
11,985.9	11,731.0	0.8	Perforation; 7,720.0-7,724.0 ftKB
12,062.0	11,807.1	0.8	
12,212.9	11,958.0	1.1	Perforation; 7,850.0-7,854.0 ftKB
12,315.0	12,060.0	1.2	
12,549.9	12,294.8	1.7	Perforation; 7,916.0-7,920.0 ftKB
12,850.1	12,594.9		

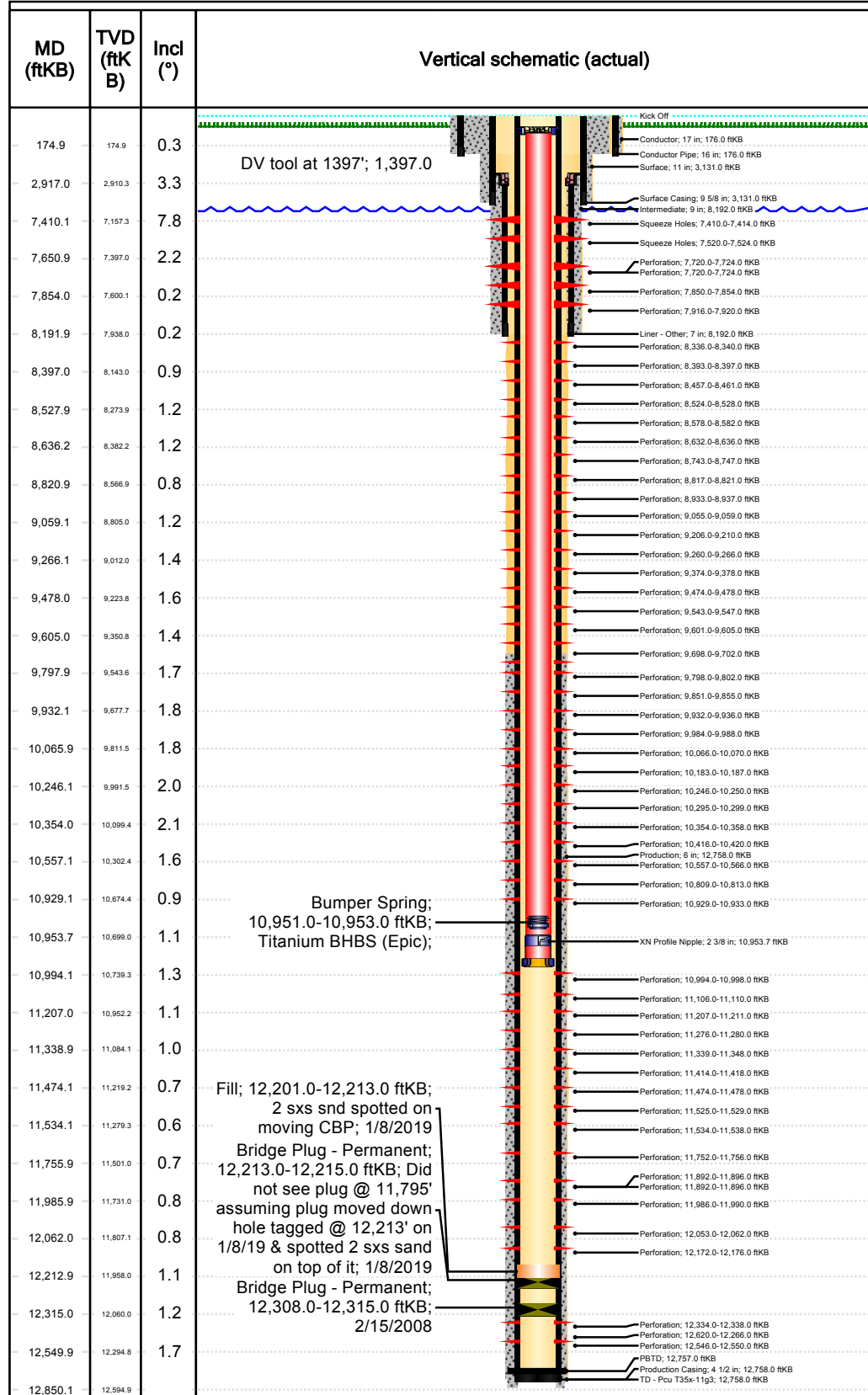
Perforations			
Date	Top (ftKB)	Btm (ftKB)	Linked Zone
11/10/2005	7,410.0	7,414.0	Ohio Creek, Pcu T35x-11g3
11/10/2005	7,520.0	7,524.0	Ohio Creek, Pcu T35x-11g3
11/10/2005	7,720.0	7,724.0	Williams Fork - Cameo, Pcu T35x-11g3
11/10/2005	7,720.0	7,724.0	Williams Fork - Cameo, Pcu T35x-11g3
11/10/2005	7,850.0	7,854.0	Williams Fork - Cameo, Pcu T35x-11g3
11/10/2005	7,916.0	7,920.0	Williams Fork - Cameo, Pcu T35x-11g3
11/8/2005	8,336.0	8,340.0	Williams Fork - Cameo, Pcu T35x-11g3
11/8/2005	8,393.0	8,397.0	Williams Fork - Cameo, Pcu T35x-11g3
11/8/2005	8,457.0	8,461.0	Williams Fork - Cameo, Pcu T35x-11g3
11/8/2005	8,524.0	8,528.0	Williams Fork - Cameo, Pcu T35x-11g3
11/8/2005	8,578.0	8,582.0	Williams Fork - Cameo, Pcu T35x-11g3
11/8/2005	8,632.0	8,636.0	Williams Fork - Cameo, Pcu T35x-11g3
11/8/2005	8,743.0	8,747.0	Williams Fork - Cameo, Pcu T35x-11g3
11/8/2005	8,817.0	8,821.0	Williams Fork - Cameo, Pcu T35x-11g3
11/8/2005	8,933.0	8,937.0	Williams Fork - Cameo, Pcu T35x-11g3
11/8/2005	9,055.0	9,059.0	Williams Fork - Cameo, Pcu T35x-11g3
11/8/2005	9,206.0	9,210.0	Williams Fork - Cameo, Pcu T35x-11g3
11/8/2005	9,260.0	9,266.0	Williams Fork - Cameo, Pcu T35x-11g3
11/8/2005	9,374.0	9,378.0	Williams Fork - Cameo, Pcu T35x-11g3
11/8/2005	9,474.0	9,478.0	Williams Fork - Cameo, Pcu T35x-11g3
11/7/2005	9,543.0	9,547.0	Williams Fork - Cameo, Pcu T35x-11g3
11/7/2005	9,601.0	9,605.0	Williams Fork - Cameo, Pcu T35x-11g3
11/7/2005	9,698.0	9,702.0	Williams Fork - Cameo, Pcu T35x-11g3
11/7/2005	9,798.0	9,802.0	Williams Fork - Cameo, Pcu T35x-11g3
11/7/2005	9,851.0	9,855.0	Williams Fork - Cameo, Pcu T35x-11g3
11/7/2005	9,932.0	9,936.0	Williams Fork - Cameo, Pcu T35x-11g3
11/5/2005	9,984.0	9,988.0	Williams Fork - Cameo, Pcu T35x-11g3
11/5/2005	10,066.0	10,070.0	Williams Fork - Cameo, Pcu T35x-11g3
11/5/2005	10,183.0	10,187.0	Williams Fork - Cameo, Pcu T35x-11g3
11/5/2005	10,246.0	10,250.0	Williams Fork - Cameo, Pcu T35x-11g3
11/5/2005	10,295.0	10,299.0	Williams Fork - Cameo, Pcu T35x-11g3
11/4/2005	10,354.0	10,358.0	Williams Fork - Cameo, Pcu T35x-11g3
11/4/2005	10,416.0	10,420.0	Williams Fork - Cameo, Pcu T35x-11g3
11/4/2005	10,557.0	10,566.0	Williams Fork - Cameo, Pcu T35x-11g3
11/3/2005	10,809.0	10,813.0	Williams Fork - Cameo, Pcu T35x-11g3
11/3/2005	10,929.0	10,933.0	Williams Fork - Cameo, Pcu T35x-11g3
11/3/2005	10,994.0	10,998.0	Williams Fork - Cameo, Pcu T35x-11g3
11/3/2005	11,106.0	11,110.0	Williams Fork - Cameo, Pcu T35x-11g3
11/2/2005	11,207.0	11,211.0	Williams Fork - Cameo, Pcu T35x-11g3
11/2/2005	11,276.0	11,280.0	Williams Fork - Cameo, Pcu T35x-11g3
11/2/2005	11,339.0	11,348.0	Williams Fork - Cameo, Pcu T35x-11g3
11/2/2005	11,414.0	11,418.0	Williams Fork - Cameo, Pcu T35x-11g3



Downhole Well Profile - with Schematic

Well Name: Pcu T35x-11g3

API/UWI 05103105270000	SAP Cost Center ID 1545144001	Permit Number 20042435	State/Province Colorado		County Rio Blanco		
Surface Location T02S-R97W-S11			Spud Date 3/18/2005 00:00	Original KB Elevation (ft) 7,016.00	Ground Elevation (ft) 6,991.00	KB-Ground Distance (ft) 25.00	Surface Casing Flange Elevation (ft)



Perforations			
Date	Top (ftKB)	Btm (ftKB)	Linked Zone
11/2/2005	11,474.0	11,478.0	Williams Fork - Cameo, Pcu T35x-11g3
11/2/2005	11,525.0	11,529.0	Williams Fork - Cameo, Pcu T35x-11g3
11/2/2005	11,534.0	11,538.0	Williams Fork - Cameo, Pcu T35x-11g3
10/28/2005	11,752.0	11,756.0	Cozette, Pcu T35x-11g3
10/28/2005	11,892.0	11,896.0	Cozette, Pcu T35x-11g3
10/28/2005	11,892.0	11,896.0	Cozette, Pcu T35x-11g3
10/28/2005	11,986.0	11,990.0	Cozette, Pcu T35x-11g3
10/28/2005	12,053.0	12,062.0	Cozette, Pcu T35x-11g3
10/28/2005	12,172.0	12,176.0	Corcoran, Pcu T35x-11g3
10/26/2005	12,334.0	12,338.0	Corcoran, Pcu T35x-11g3
10/26/2005	12,546.0	12,550.0	Corcoran, Pcu T35x-11g3
10/26/2005	12,620.0	12,266.0	Corcoran, Pcu T35x-11g3