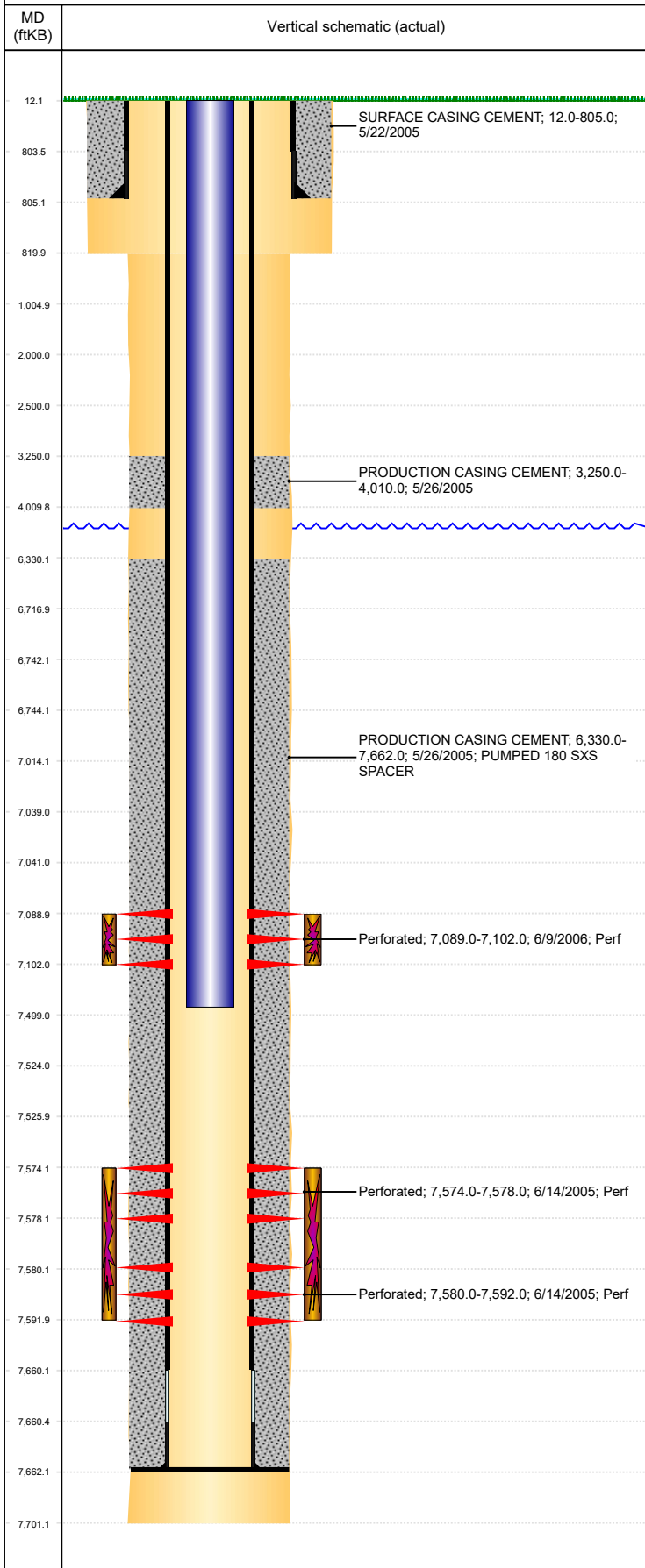


Well Name: PERKINS 42-05

VERTICAL, ORIGINAL HOLE, 3/26/2020 12:32:15 PM



Well Header									
API 05-123-23195		Business Unit DJ BASIN			District 15		Well Config VERTICAL		
KB - GL / MSL (ft... 12.00		Spud Date 5/21/2005		P & A Date		Well Production Status SI			SoRT No
Comment JSAND FRAC- 1ST 2 ATTEMPTS SCREENED OUT. 12/14/06- DRILLED ON AFP, PLUG FELL AWAY, CHASED PLUG TO 11.25' IN ON #246 @ 7662.35'. STATE SHOWS SHUT IN SINCE APR 2017.									
Surface Location (Congressional)									
Qtr 3 SE	Qtr 4 NE	Section 5	Twnshp 2	Twnsh... N	Range 64	Rng E/... W	Actual Latitude (°) 40.16916844	Actual Longitude (°) -104.56818332	
Wellbore Sections									
Section Des			Size (in)			Act Top, MD (ftKB)		Act Btm, MD (ftKB)	
SURFACE			12 1/4			12		820	
PRODUCTION			7 7/8			820		7,701	
Casing Strings									
Csg Des		Run Date		OD (in)	Wt/Len (lb/ft)	Grade	Top, MD (ftKB)	MD (ftKB)	
Surface		5/22/2005		8 5/8	24.00	?	12.0	805.0	
Production		5/26/2005		4 1/2	11.60	N-80	12.0	7,662.0	
Cement									
Des				Start Date		Top (ftKB)		Btm (ftKB)	
SURFACE CASING CEMENT				5/22/2005		12.0		805.0	
PRODUCTION CASING CEMENT				5/26/2005		3,250.0		4,010.0	
PRODUCTION CASING CEMENT				5/26/2005		6,330.0		7,662.0	
Zone Statuses									
Zone Name	Status Date	Status	Fluid Type	Job				Prod Method	
J SAND	3/4/2010	PR	Water					Flowing	
J SAND	5/9/2017	SI						Flowing	
CODELL	3/4/2010	PR	Water					Flowing	
CODELL	5/9/2017	SI							
Perforation Data									
Linked Zone		Bnch/Stg	Entered Shot Total	Top (ftKB)		Btm (ftKB)		Date	
CODELL, ORIGINAL HOLE			52	7,089.00		7,102.00		6/9/2006	
J SAND, ORIGINAL HOLE			16	7,574.00		7,578.00		6/14/2005	
J SAND, ORIGINAL HOLE			48	7,580.00		7,592.00		6/14/2005	
Stimulation Intervals									
Zone			Start Date		Top (ftKB)		Btm (ftKB)		
CODELL, ORIGINAL HOLE			6/29/2006		7,089.0		7,102.0		
J SAND, ORIGINAL HOLE			6/15/2005		7,574.0		7,592.0		
J SAND, ORIGINAL HOLE			6/15/2005		7,574.0		7,592.0		
J SAND, ORIGINAL HOLE			6/15/2005		7,574.0		7,592.0		
Other In Hole									
Run Date		Des				OD (in)	Top (ftKB)	Btm (ftKB)	
Logs									
Date		Type				Top, MD (ftKB)		Btm, MD (ftKB)	
5/26/2005		TRIPLE COMBO				808.0		7,701.0	
5/31/2005		CBL/CCL/GR				3,100.0		7,670.0	
5/5/2017		GYRO				10.0		7,400.0	
Plug Back Total Depths									
Date		Type		Com				Depth (ftKB)	
6/17/2005		FILL		CLEAN OUT TO LAND TUBING				7,675.0	
12/14/2006		PLUG		DRILLED ON AFP, PLUG FELL AWAY, CHASED PLUG TO 11.2...				7,662.0	