

Inspection Photos
Location Name: Middlepark 18 PAD
Location ID: 442024



Photo 1 – Sign at Entrance



Photo 2 – Sign at Northeast Tank Battery



Inspection Photos
Location Name: Middlepark 18 PAD
Location ID: 442024



Photo 3 – Unused Equipment in the Northeast corner of Location



Photo 4 – Unused Equipment in the Northeast corner of Location

Inspection Photos
Location Name: Middlepark 18 PAD
Location ID: 442024

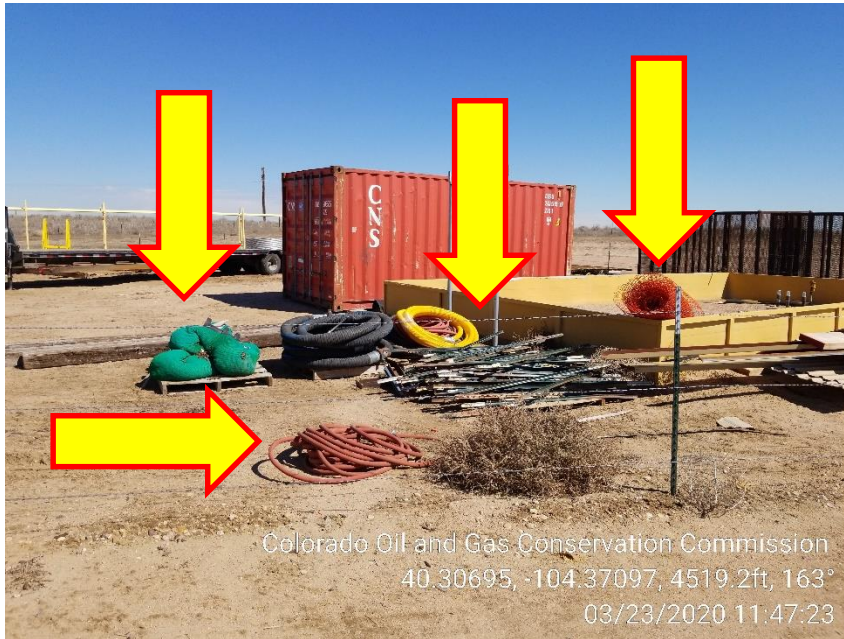


Photo 5 – Unused Equipment in the Northeast corner of Location



Photo 6 – Unused Equipment in the Northeast corner of Location



Inspection Photos
Location Name: Middlepark 18 PAD
Location ID: 442024



Photo 7 – Unused Equipment in the Northeast corner of Location

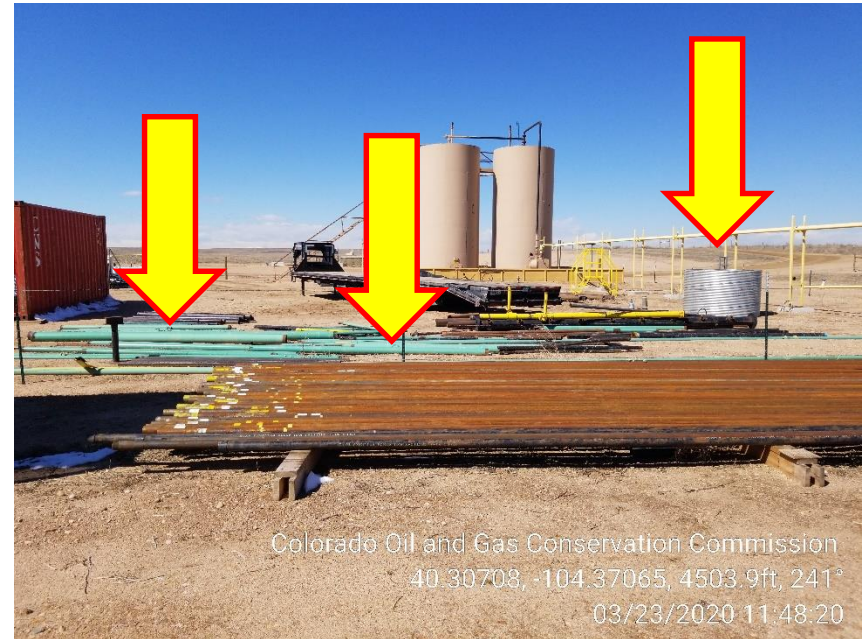


Photo 8 – Unused Equipment in the Northeast corner of Location



Inspection Photos
Location Name: Middlepark 18 PAD
Location ID: 442024



Photo 9 – Unused Equipment in the Northeast corner of Location



Photo 10 – Unmarked 2" Riser at NE Tank Battery

Inspection Photos
Location Name: Middlepark 18 PAD
Location ID: 442024



Photo 11 – Unmarked 2” Riser at NE Tank Battery



Photo 12 – Unmarked 1” and 2” Risers, Stained Soil and Debris inside the old Separator berm in NE Corner of location.

Inspection Photos
Location Name: Middlepark 18 PAD
Location ID: 442024

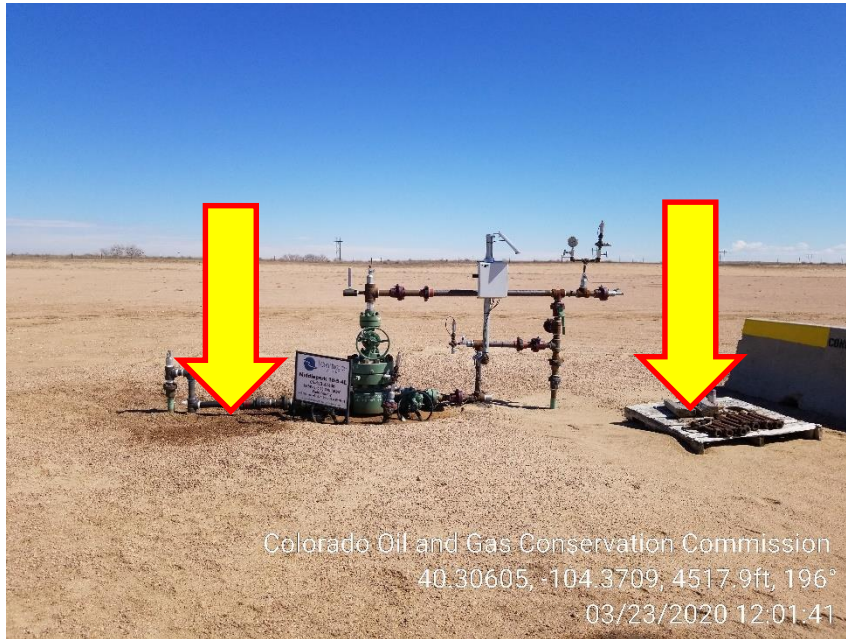


Photo 13 – Stained Soil and Unused Equipment at Middlepark Wellheads

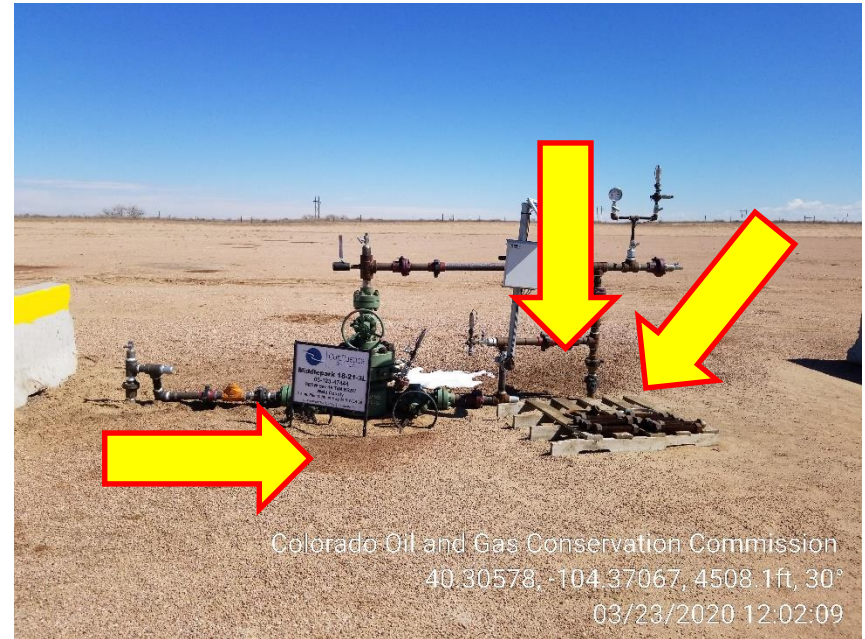


Photo 14 – Stained Soil and Unused Equipment at Middlepark Wellheads

Inspection Photos
Location Name: Middlepark 18 PAD
Location ID: 442024



Photo 15 – Stained Soil east of Middlepark Wellheads

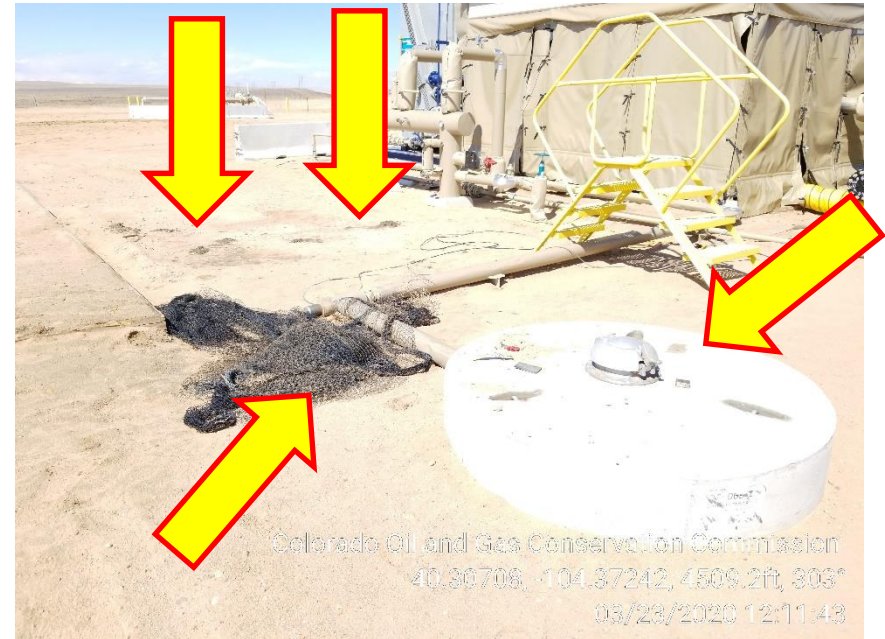


Photo 16 – Stained Soil east of Middlepark Wellheads

Inspection Photos
Location Name: Middlepark 18 PAD
Location ID: 442024



Photo 17 – North Compressor and Gas Meter



**Photo 18 – Trash/Debris, Stained Soil. Concrete vault missing
Signage at North Compressor.**



Inspection Photos
Location Name: Middlepark 18 PAD
Location ID: 442024



Photo 19 – Trash/Debris at North Compressor



Photo 20 – Trash/Debris at North Compressor.



Inspection Photos
Location Name: Middlepark 18 PAD
Location ID: 442024



Photo 21 – Unused Pipe west of Gas Meter



Photo 22 – Trash/Debris at East of Gas Meter



Inspection Photos
Location Name: Middlepark 18 PAD
Location ID: 442024



Photo 23 – West Tank Battery, Middlepark



**Photo 24 – Fiberglass Vault at NE corner of Tank Berm
missing Signage.**



Inspection Photos
Location Name: Middlepark 18 PAD
Location ID: 442024

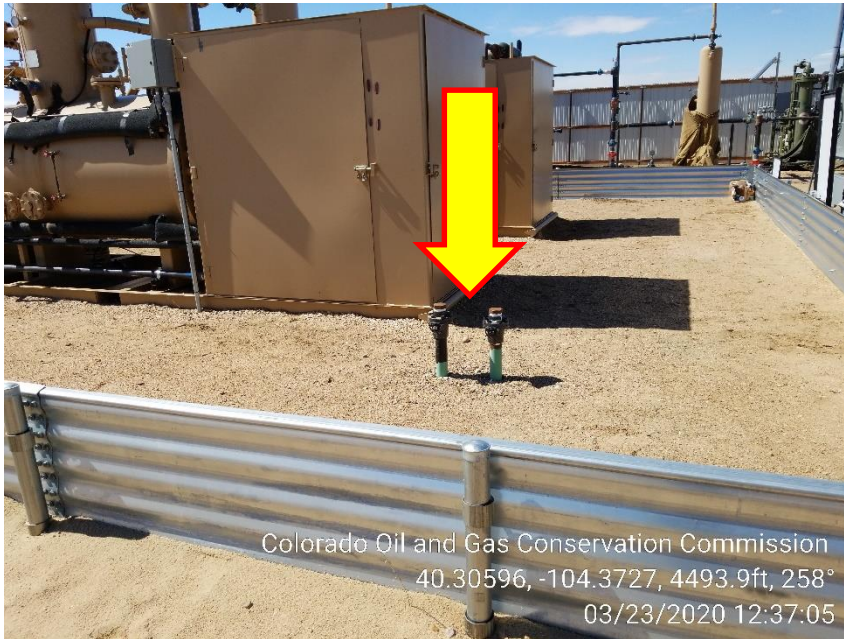


Photo 25 – Unmarked Risers at Separators

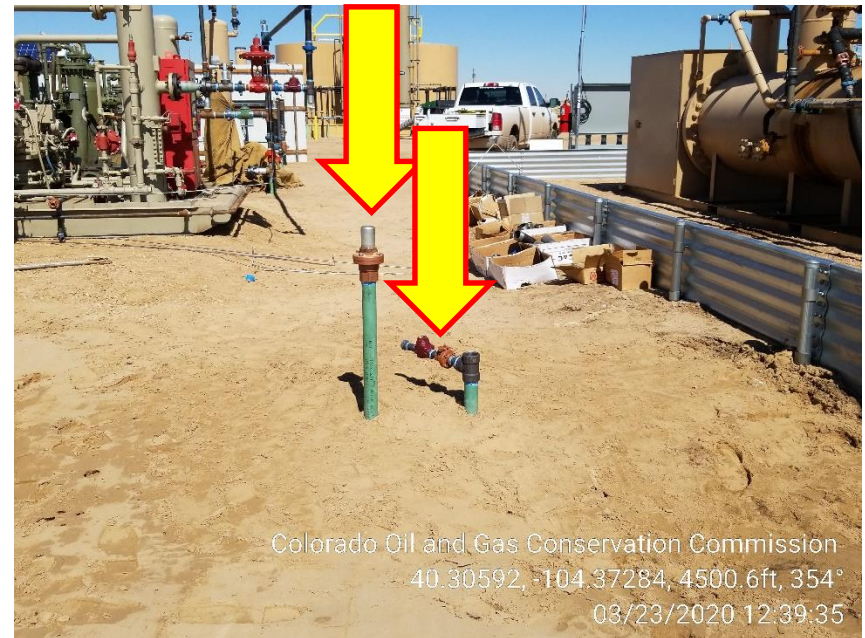


Photo 26 – Unmarked Risers at Separators



Inspection Photos
Location Name: Middlepark 18 PAD
Location ID: 442024



Photo 27 – Stained Soil at West Separator

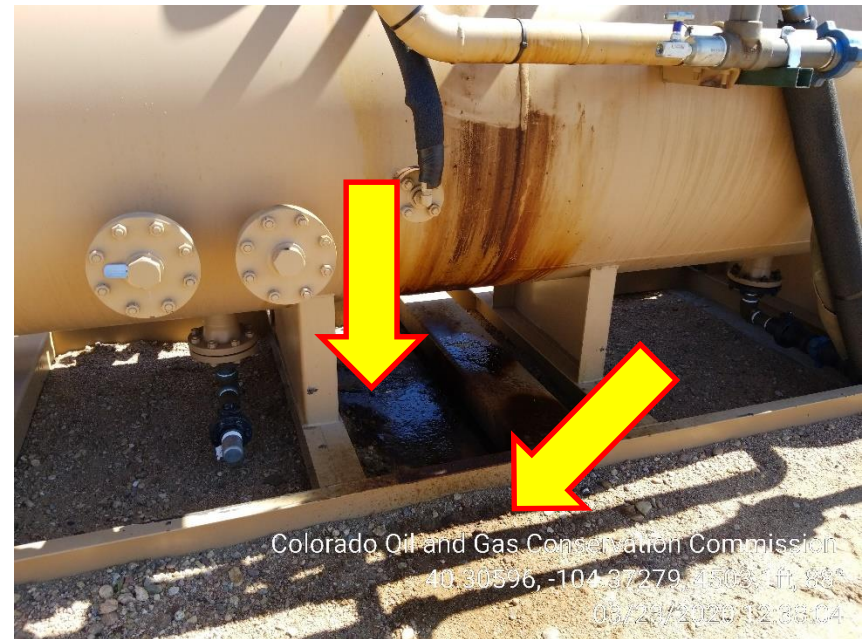


Photo 28 – Stained Soil at West Separator



Inspection Photos
Location Name: Middlepark 18 PAD
Location ID: 442024



Photo 29 – Stained Soil at VRU



Photo 30 – State Seventy Holes J-18 Missing Wellhead Sign



Inspection Photos
Location Name: Middlepark 18 PAD
Location ID: 442024

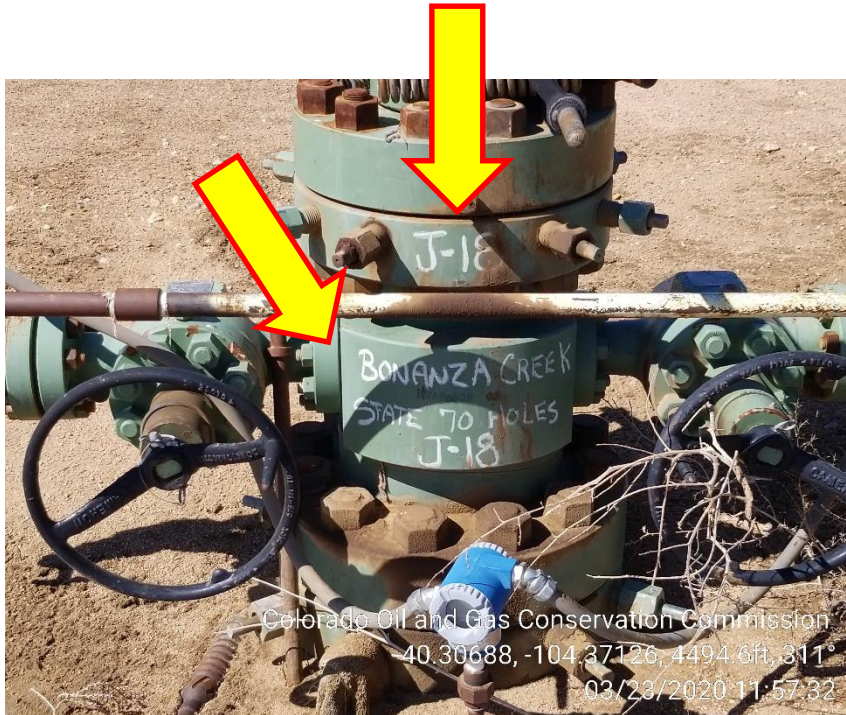


Photo 31 – Bonanza Creek is not current Operator. Missing Signage with Current Operator Info.