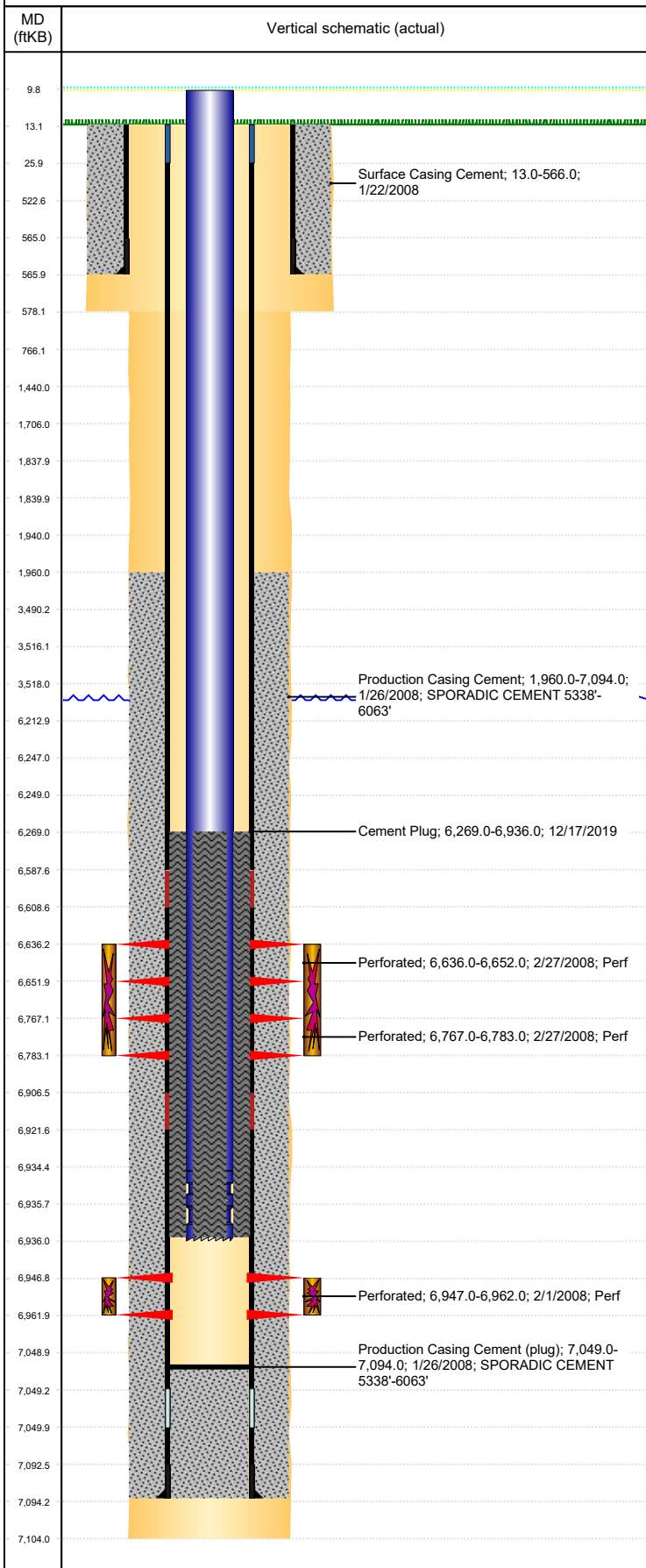


**Well Name: WPF III A18-07**

VERTICAL, ORIGINAL HOLE, 3/25/2020 8:59:02 AM



Well Header									
API 05-123-26642		Business Unit DJ BASIN			District 15		Well Config VERTICAL		
KB - GL / MSL (ft... 13.00		Spud Date 1/22/2008		P & A Date		Well Production Status TA			SoRT Yes
Comment									
Surface Location (Congressional)									
Qtr 3 SW	Qtr 4 NE	Section 18	Twonshp 6	Twonsh... N	Range 64	Rng E/... W	Actual Latitude (°) 40.48780282	Actual Longitude (°) -104.59083016	
Wellbore Sections									
Section Des			Size (in)			Act Top, MD (ftKB)		Act Btm, MD (ftKB)	
SURFACE			12 1/4			13		578	
PRODUCTION			7 7/8			578		7,104	
Casing Strings									
Csg Des			Run Date		OD (in)	Wt/Len (lb/ft)	Grade	Top, MD (ftKB)	MD (ftKB)
Surface			1/22/2008		8 5/8	24.00	J-55	13.0	566.0
Production			1/26/2008		4 1/2	11.60	M-80	13.0	7,094.0
Cement									
Des					Start Date		Top (ftKB)		Btm (ftKB)
Surface Casing Cement					1/22/2008		13.0		566.0
Production Casing Cement					1/26/2008		1,960.0		7,094.0
Cement Plug					12/17/2019		6,269.0		6,936.0
Zone Statuses									
Zone Name		Status Date	Status	Fluid Type	Job			Prod Method	
NIOBRARA		2/19/2016	PR	Water	MECHANICAL INTEGRITY, 12/19/2019 00:00			Flowing	
NIOBRARA		12/17/2019	TA						
CODELL		4/14/2010	PR		MECHANICAL INTEGRITY, 12/19/2019 00:00				
CODELL		12/17/2019	TA						
Perforation Data									
Linked Zone			Bnch/Stg	Entered Shot Total	Top (ftKB)		Btm (ftKB)		Date
NIOBRARA, ORIGINAL HOLE			A	64	6,636.00		6,652.00		2/27/2008
NIOBRARA, ORIGINAL HOLE			B	64	6,767.00		6,783.00		2/27/2008
CODELL, ORIGINAL HOLE				60	6,947.00		6,962.00		2/1/2008
Stimulation Intervals									
Zone					Start Date		Top (ftKB)		Btm (ftKB)
NIOBRARA, ORIGINAL HOLE					2/27/2008		6,636.0		6,783.0
CODELL, ORIGINAL HOLE					2/27/2008		6,947.0		6,962.0
Other In Hole									
Run Date		Des				OD (in)	Top (ftKB)		Btm (ftKB)
3/27/2019		Plunger Lift				1 7/8			
Logs									
Date		Type					Top, MD (ftKB)		Btm, MD (ftKB)
1/25/2008		Caliper/Comp.Density/Neutron/GR/SP/ML					2,600.0		7,084.0
1/25/2008		DIL/GR/SP/Caliper					568.0		7,104.0
1/30/2008		CBL/CCL/GR					1,810.0		7,034.0
11/21/2016		GYRO					0.0		6,850.0
Plug Back Total Depths									
Date		Type			Com				Depth (ftKB)
1/30/2008		FILL			DEPTH LOGGER ON CBL				7,041.0
10/27/2008		FILL			DRILL PLUG AND PUSH TO 7049', CIRCULATE CLEAN				7,049.0