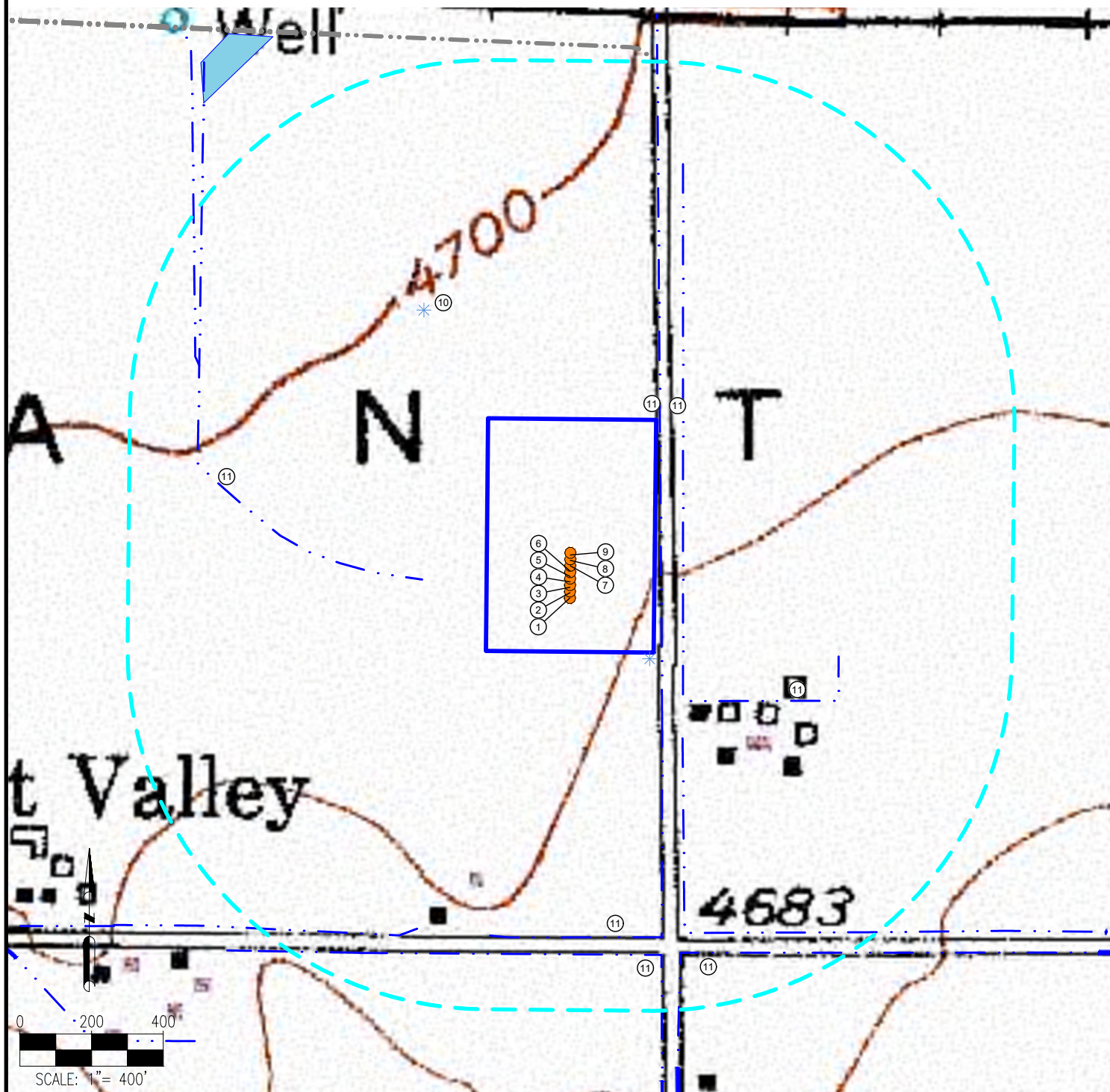


HUNGENBERG PAD HYDROLOGY MAP



MEASUREMENTS ARE MADE FROM THE NEAREST EDGE OF THE DISTURBANCE AREA.

- | | |
|--------------------|--|
| 1. HUNGENBERG UH 1 | 7. HUNGENBERG UH 7 |
| 2. HUNGENBERG UH 2 | 8. HUNGENBERG UH 8 |
| 3. HUNGENBERG UH 3 | 9. HUNGENBERG UH 9 |
| 4. HUNGENBERG UH 4 | 10. PIVOT POINT IS ±351' NW |
| 5. HUNGENBERG UH 5 | 11. DITCHES ARE ±180' W, ±845' S, ±795' S, ±10' E, ±75'E, ±158' SE, ±841' SE |
| 6. HUNGENBERG UH 6 | |

LEGEND:

- | | | |
|------------------|---------------|--------------------|
| = PROPOSED WELL | = PIVOT POINT | = DISTURBANCE AREA |
| = CONCRETE DITCH | = DITCH | = 1000' RADIUS |
| | | = POND |

DISCLAIMER:
THIS PLOT DOES NOT REPRESENT A MONUMENTED LAND SURVEY AND SHOULD NOT BE RELIED UPON TO DETERMINE BOUNDARY LINES, PROPERTY OWNERSHIP OR OTHER PROPERTY INTERESTS. PARCEL LINES, IF DEPICTED HAVE NOT BEEN FIELD VERIFIED AND MAY BE BASED UPON PUBLICLY AVAILABLE DATA THAT ALSO HAS NOT BEEN INDEPENDENTLY VERIFIED.

DATA SOURCE:
TOPO MAP: USGS
NHD: USGS
PUBLICLY AVAILABLE DATA SOURCES HAVE NOT BEEN INDEPENDENTLY VERIFIED BY ASCENT.



FIELD DATE:
07-02-18
DRAWING DATE:
03-05-20
BY:
CSG
CHECKED:
IJM

SITE NAME:
HUNGENBERG PAD
SURFACE LOCATION:
SE 1/4 SE 1/4 SEC. 27, T6N, R65W, 6TH P.M.
WELD COUNTY, COLORADO

PREPARED FOR:

