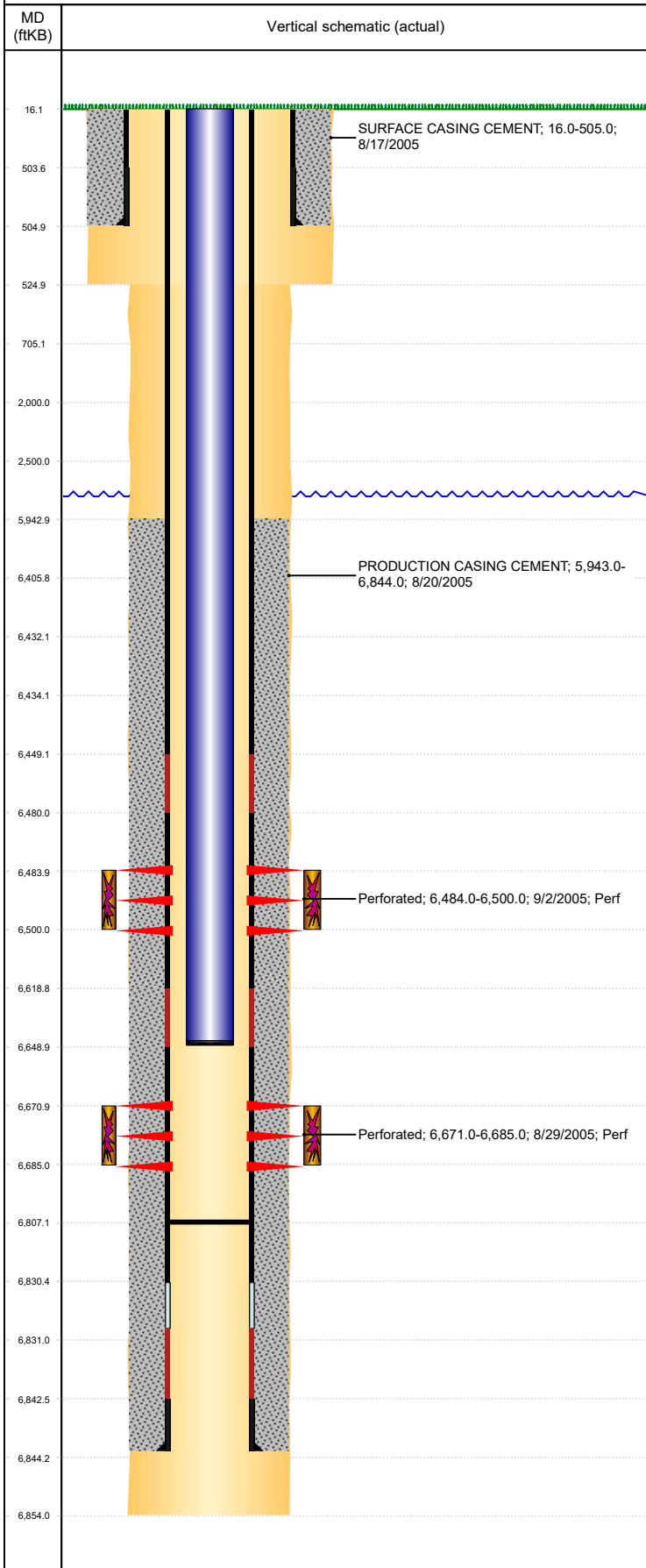


Well Name: FUEGO C01-19

VERTICAL, ORIGINAL HOLE, 3/12/2020 3:52:11 PM



Well Header									
API 05-123-23166			Business Unit DJ BASIN			District 15		Well Config VERTICAL	
KB - GL / MSL (ft... 16.00		Spud Date 8/17/2005		P & A Date		Well Production Status PR			SoRT No
Comment									
Surface Location (Congressional)									
Qtr 3 NW	Qtr 4 NW	Section 1	Twnshp 4	Twنش... N	Range 64	Rng E/... W	Actual Latitude (°) 40.34548106	Actual Longitude (°) -104.50359221	
Wellbore Sections									
Section Des			Size (in)			Act Top, MD (ftKB)		Act Btm, MD (ftKB)	
SURFACE			12 1/4			16		525	
PRODUCTION			7 7/8			525		6,854	
Casing Strings									
Csg Des			Run Date		OD (in)	Wt/Len (lb/ft)	Grade	Top, MD (ftKB)	MD (ftKB)
Surface			8/17/2005		8 5/8	24.00	J-55	16.0	505.0
Production			8/20/2005		4 1/2	11.60	M-80	16.0	6,844.0
Cement									
Des					Start Date		Top (ftKB)		Btm (ftKB)
SURFACE CASING CEMENT					8/17/2005		16.0		505.0
PRODUCTION CASING CEMENT					8/20/2005		5,943.0		6,844.0
Zone Statuses									
Zone Name		Status Date	Status	Fluid Type	Job			Prod Method	
CODELL		9/3/2005	PR		DRILLING/COMPLETION - ORIGINAL, 8/17/2005...			Flowing	
CODELL		1/7/2006	PR		DRILLING/COMPLETION - ORIGINAL, 8/17/2005...				
NIOBRARA		9/3/2005	PR		DRILLING/COMPLETION - ORIGINAL, 8/17/2005...				
Perforation Data									
Linked Zone			Bnch/Stg	Entered Shot Total	Top (ftKB)		Btm (ftKB)		Date
NIOBRARA, ORIGINAL HOLE				96	6,484.00		6,500.00		9/2/2005
CODELL, ORIGINAL HOLE				56	6,671.00		6,685.00		8/29/2005
Stimulation Intervals									
Zone				Start Date		Top (ftKB)		Btm (ftKB)	
NIOBRARA, ORIGINAL HOLE				9/2/2005		6,484.0		6,500.0	
CODELL, ORIGINAL HOLE				9/2/2005		6,671.0		6,685.0	
Other In Hole									
Run Date		Des				OD (in)	Top (ftKB)		Btm (ftKB)
12/10/2018		Plunger Lift				1 7/8			
Logs									
Date		Type				Top, MD (ftKB)		Btm, MD (ftKB)	
8/20/2005		COMPENSATED DENSITY				4,100.0		6,828.0	
8/20/2005		INDUCTION				505.0		6,848.0	
8/29/2005		CBL/CCL/GR				5,750.0		6,790.0	
11/13/2016		GYRO				0.0		6,550.0	
Plug Back Total Depths									
Date		Type		Com				Depth (ftKB)	
8/29/2005		FILL		DEPTH LOGGER ON CBL				6,790.0	
1/7/2006		PLUG REMNANTS		CLEAN OUT FTP				6,807.0	