



Magnum Cementing Services LLC
2800 South, 600 17th Street
Denver, Colorado 80202

Field Ticket

Job Date: February 24, 2020
Job Number: JOB00082459

Bill To:

PDC Energy
PO Box 26

Bridgeport, West Virginia
26330

UWI: Webster Farms 31-11

Surface: NWNE, Sec 11, 6N, 65W

Pricing Area: Area 1

Competitive: STDU

Depth: 1750

Job Type: Balanced Plug

	Units	Per	Unit Price	Cost
Services and Equipment				
PCMP Unit Travel	55	MI		
PCMP - Remedial Set Up (6 Hr min)	1,750	FT		
Equipment				
MDAC	1	Job		
Communication Headsets	2	RDIO		
Material Handling & Delivery				
Bulk Material Blending	426.36	SKS		
Bulk Material Delivery	23,449.79	SKMI		
Products & Materials				
MAG S 14.1	418	SKS		
MCA-1	363.66	LB		
MCFL-1	145.46	LB		
MCFR-2	181.83	LB		
MCDF-P	36.36	LB		
MCDF-L	4	GAL		

Customer Stamp:

SERVICES PROVIDED BY MAGNUM CEMENTING SERVICES
LTD. ARE GOVERNED BY AND SUBJECT TO THE
ATTACHED TERMS AND CONDITIONS.

Received By: Hector Terrazas 970-506-9272

Comments:

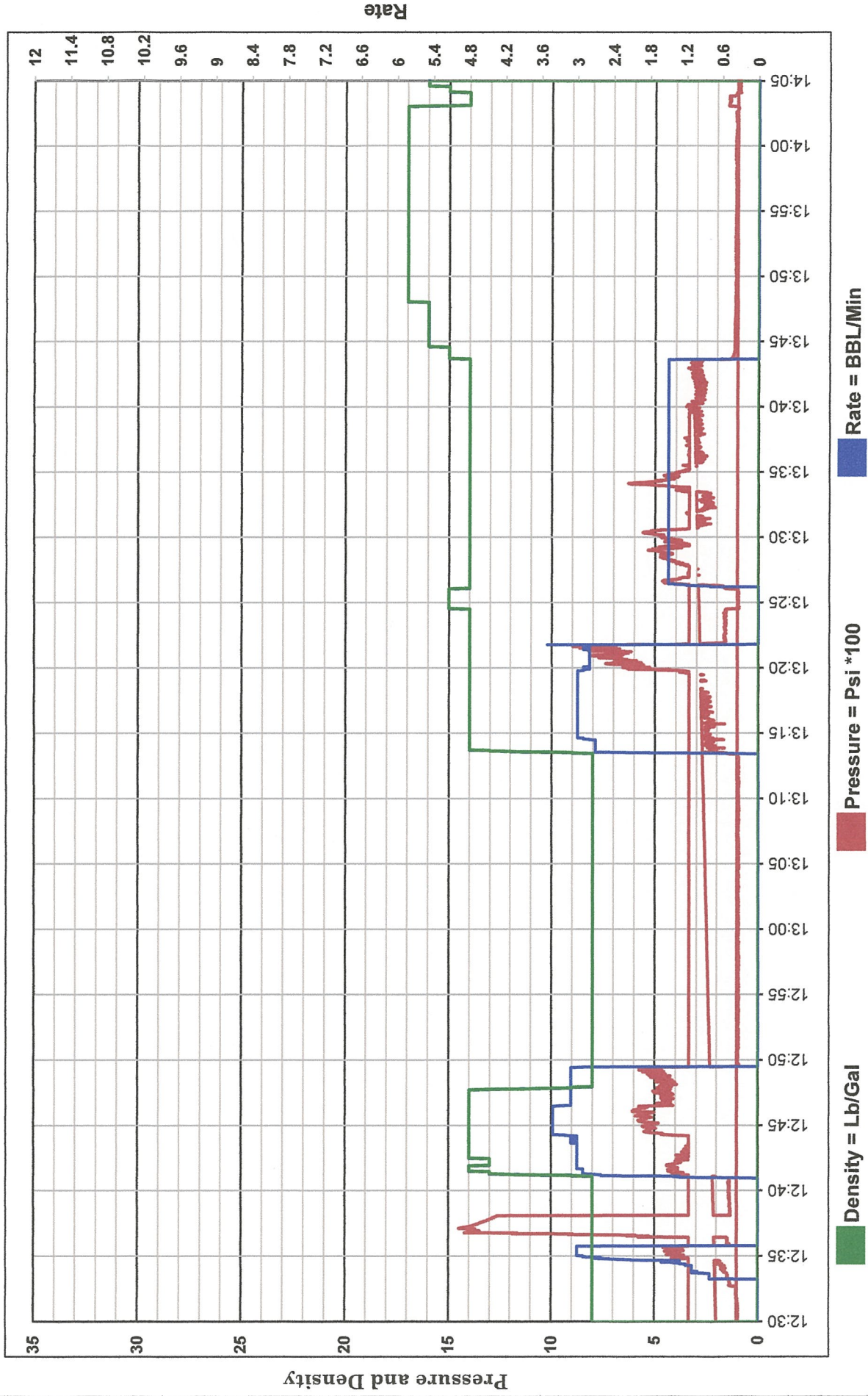
All totals are estimated (including mileage), and are subject to change depending on actual amounts used. Applicable taxes will be added to the invoice. Prices may change without notice due to fluctuating market conditions. Prices are in effect for 30 days from date shown.



Customer: PDC Energy
Date: Feb 24 2020
Ticket: 82459

Well Name: Webster Farms 31-11
UWI: Webster Farms 31-11
Job Type: Remedial plugs

Unit
1505





US Treatment Report

Customer: PDC Energy
Rep: Hector Terrazas
Supervisor: Darrick Liesch

Rig:
Well: PDC Webster Farms 31-11

Job #: JOB00082459
Job Date: Feb 24 @ 00:00
Time Requested: Feb 24 @ 09:00

Job Type: US Remedial
 Balanced Plug

UWI: Webster Farms 31-11
Surface: NWNE, Sec 11, 6N, 65W

Time Arrived: Feb 24 @ 09:00
Time Released: Feb 24 @ 15:00

418 sk MAG S 14.1 + 1.00% MCA-1 + 0.10% MCDF-P + 0.40% MCFL-1 + 0.50% MCFR-2

Yield: 1.28 ft³/sk = 95.29bbls Mix Water: 5.89 gal/sk = 2462.02gal

BHCT (F)	77/74	BHST (F)	68/51	Casing 1 Casing Size (in)	8.625
Casing 1 Weight (lb/ft)	24	Casing 2 Casing Size (in)	4.5	Casing 2 Weight (lb/ft)	11.6
Hole Size (in)	10	Mud Density (lb/gal)	8.3	Mud Type	WBM
TMD (ft)	1750	Tubing (in)	2 3/8	Tubing Grade	J-55
Tubing Length (ft)	1750	Tubing WT (lb/ft)	4.7		

Treatment Info: Sacks Used: 0 Sacks Not Used: 0

Preflush: 5bbls Fresh Water


Circulation Time: 0.5

Displace:

Slurry Temp: 67 Bulk Sample: Yes
 Water Temp: 58 Water Sample: Yes
 Bulk Temp: 55 Slurry Sample: Yes

Slurry Returns: Plug Bumped: Pump Out Lines: Float Held:

Time	Pressure psi	Annular Pressure psi	Volume Per Stage bbls	Total Stage Volume bbls	Rate bbls/min	Treatment Detail
09:00	0.00					Arrive on Location
12:00	0.00					Safety Meeting
12:33	300.00			5	3	Fill Lines - H2O
12:36	1,500.00					Start Pressure Test
12:41	400.00			20.5	3	Pump Slurry - Mag S 14.1
12:47	450.00			5.7	3	Displace - H2O
12:50	0.00					Rig Pulls Tubing
13:13	450.00			73	1.8	Pump Slurry - Mag S 14.1
13:45	0.00					Rig Pulls Tubing
14:03	50.00			2	.5	Pump Slurry - Mag S 14.1
14:05	0.00					Wash Up Truck
14:07	0.00					Rig Out
15:00	0.00					Leave Location

		CUSTOMER P. O. NUMBER		SERVICE ORDER 4015		PAGE 1 of 1							
SureFire Wireline		You are hereby requested to perform or attempt to perform the following service(s) or furnish the following equipment:				DATE 2/21/2020							
SERVICE(S) AND/OR EQUIPMENT REQUESTED													
CUSTOMER		COMPANY		PDC Energy, Inc									
FURNISHED		LEASE		Webster Farms		WELL NUMBER 31-11							
LEASE/WELL		API:		05-123-21132									
INFORMATION		FIELD		Wattenberg		PARISH/COUNTY WELD STATE Colorado							
<small>THE UNDERSIGNED, HEREINAFTER REFERRED TO AS CUSTOMER AGREES TO PAY YOU FOR THE ABOVE SPECIFIED SERVICE(S) (INCLUDING LEASED EQUIPMENT) AND ANY ADDITIONAL SERVICE(S) REQUESTED, AT THE FIELD OFFICE OF SUREFIRE WIRELINE WEST COLORADO LLC., IN ACCORDANCE WITH THE APPLICABLE PROVISIONS OF YOUR CURRENT PRICE SCHEDULE. IN CONSIDERATION OF THE PRICES AS ARE SET OUT IN YOUR CURRENT APPLICABLE PRICE SCHEDULE WE CHOOSE TO BE BOUND BY THE TERMS AND CONDITIONS SET OUT IN THE CURRENT PRICE SCHEDULE (ALSO PRINTED ON THE REVERSE SIDE HEREOF), INCLUDING THE ASSUMPTION BY US OF THE LIABILITIES AND RESPONSIBILITIES CONTAINED IN THE RESPONSIBILITIES HEREIN ASSUMED BY US. WHEN SIGNED BY AN AGENT ON BEHALF OF CUSTOMER, SAID AGENT REPRESENTS THAT HE HAS FULL AUTHORITY FROM HIS PRINCIPAL TO EXECUTE SAME, IN THE ABSENCE OF AUTHORITY, THE SIGNER AGREES THAT HE SHALL BE OBLIGATED HEREUNDER AS CUSTOMER.</small>													
CUSTOMER NAME PDC Energy, Inc													
INVOICE MAILING ADDRESS				CITY		STATE ZIP CODE							
SIGNATURE OF CUSTOMER OR AUTHORIZED REPRESENTATIVE													
X				Thank you for using SureFire Wireline!!		Total runs, all pages 8							
THE ESTIMATED CHARGES AND DATA SHOWN ARE SUBJECT TO CORRECTION BY SUREFIRE WIRELINE WEST COLORADO ACCOUNTING													
UNIT NUMBER 804		OPERATION TYPE: DAYLIGHT		WELL TYPE: WORKOVER		ROUND TRIP MILEAGE							
		TRIP: FIRST		HOISTING TYPE: WORKOVER RIG									
WIRELINE DEPTH		MAX. WELLHEAD PRESSURE		PSI		BOTTOM HOLE PRESSURE: PSI							
Desc. NO.	PERF. INTERVAL	PLUG DEPTH	OPERATION	ITEM	QUAN.	UNIT PRICE	DISC. PRICE	AMOUNT	SERVICE	FIRST READING	LAST READING	FOOTAGE DEL.	
1			P - Packoff	each	1				Plug				
2		7102'	P - Plug or Retainer - setting (3rd party)	each	1				Perf				
3		7102'	P - Dump Bailer Cement (2 SXs)	per run	1								
4		6800'	P - Plug or Retainer - setting (3rd party)	each	1								
5		6800'	P - Dump Bailer Cement (2 SXs)	per run	1								
6		2500'	P - Plug or Retainer - setting (3rd party)	each	1								
7		2500'	P - Dump Bailer Cement (2 SXs)	per run	1								
8	CBL - 1900'-0'		P - Cement Bond Log (2000' - Surface)	each	1								
9	Cut - 1700'		P - Jet Cutters (all)	each	1								
10													
11													
12													
13													
14													
15													
16													
17													
18													
19													
20													
21													
22													
23													
24													
			STANDARD PRICING										
Runs for this job													
8													
			ESTIMATED TOTAL										
SIGNATURE OF CUSTOMER OR AUTHORIZED REPRESENTATIVE			LOGS RECEIVED AT WELL			CUST. I			FIRE WIRELINE ENGINEER				
X Hector									Meisner, Jacob				
Casing/Tubing RECORD			PERM. DEPTH DATUM			GROUND LEVEL			ELEV. K.B.				
SIZE	WEIGHT	TYPE	FROM	TO	LOG MEAS. FROM	WHICH IS	ABOVE PERM DATUM	D.F.	G.L.				
4 1/2		Casing 1			Fluid Type	Fluid Weight	Fluid Level			REMARKS			
		Casing 2				lbs/gal	feet			District doing job: Kersey, CO			
		Tubing								Line of Business: Completions			
		Liner								Type of Job: Vertical P and A			
		Drill Pipe			Bottom Hole Temperature	Degrees F				Class: Vert. Domestic			
SUREFIRE ENGINEER NAMES			WORK WITNESSED BY NAME						District job is in: Kersey, CO				
Meisner, Jacob			Crew 1			Hector T.							
SUREFIRE OPERATORS			Crew 2										
Kuntz, Shane			Crew 3						AFE#:				
Schneider, Kyle			Crew 4						Engineer: Meisner, Jacob				
			Crew 5						MSA#:				
			Crew 6										