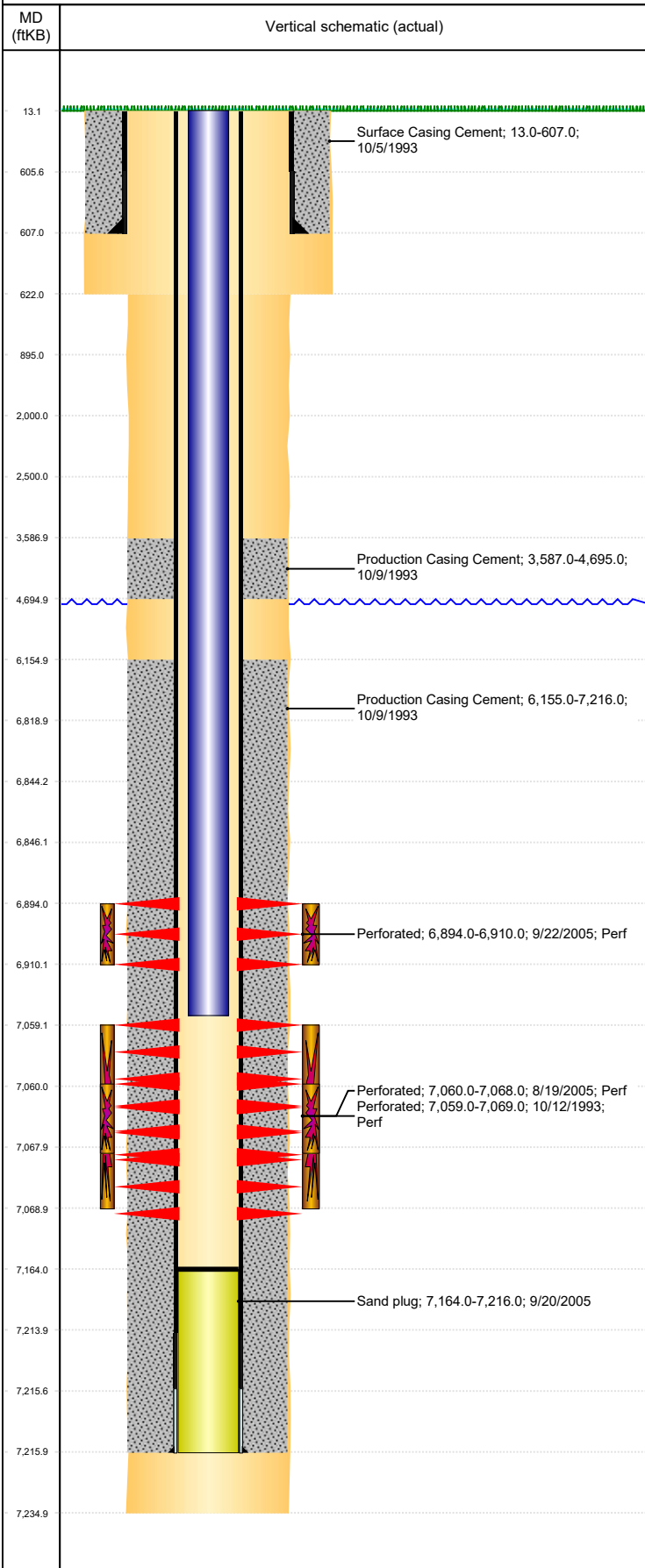


**Well Name: NORRIS D32-07**

VERTICAL, ORIGINAL HOLE, 3/12/2020 3:46:20 PM



Well Header									
API 05-123-17398		Business Unit DJ BASIN			District 15		Well Config VERTICAL		
KB - GL / MSL (ft... 13.00		Spud Date 10/4/1993		P & A Date		Well Production Status PR			SoRT No
Comment DISCREPANCY: DRL RPT TD @ 7230', STATE RPT AND LOG TD @ 7235'. USED 7235'. STATE SHOWS SHUT IN SINCE DEC 2015. FIELD OPS NOTICE- FLOWLINES ABANDONED PER RULE 1103, RCVD 6/28/17									
Surface Location (Congressional)									
Qtr 3 SW	Qtr 4 NE	Section 32	Twnshp 3	Twnsh... N	Range 64	Rng E/... W	Actual Latitude (°) 40.18357833	Actual Longitude (°) -104.57283976	
Wellbore Sections									
Section Des			Size (in)			Act Top, MD (ftKB)		Act Btm, MD (ftKB)	
SURFACE			12 1/4			13		622	
PRODUCTION			7 7/8			622		7,235	
Casing Strings									
Csg Des		Run Date		OD (in)	Wt/Len (lb/ft)	Grade	Top, MD (ftKB)	MD (ftKB)	
Surface		10/5/1993		8 5/8	24.00		13.0	607.0	
Production		10/9/1993		3 1/2	7.70	M-75	13.0	7,216.0	
Cement									
Des				Start Date		Top (ftKB)		Btm (ftKB)	
Surface Casing Cement				10/5/1993		13.0		607.0	
Production Casing Cement				10/9/1993		3,587.0		4,695.0	
Production Casing Cement				10/9/1993		6,155.0		7,216.0	
Zone Statuses									
Zone Name	Status Date	Status	Fluid Type	Job			Prod Method		
CODELL	11/21/2005	PR	Oil	RECOMPLETION, 9/19/2005 00:00			Flowing		
CODELL	2/11/2010	PR	Water						
NIOBRARA	11/21/2005	PR	Oil	RECOMPLETION, 9/19/2005 00:00			Flowing		
NIOBRARA	2/11/2010	PR	Water						
Perforation Data									
Linked Zone		Bnch/Stg	Entered Shot Total	Top (ftKB)		Btm (ftKB)		Date	
NIOBRARA, ORIGINAL HOLE			96	6,894.00		6,910.00		9/22/2005	
CODELL, ORIGINAL HOLE			40	7,059.00		7,069.00		10/12/1993	
CODELL, ORIGINAL HOLE			32	7,060.00		7,068.00		8/19/2005	
Stimulation Intervals									
Zone			Start Date		Top (ftKB)		Btm (ftKB)		
NIOBRARA, ORIGINAL HOLE			10/14/2005		6,894.0		6,910.0		
CODELL, ORIGINAL HOLE			10/12/1993		7,059.0		7,069.0		
CODELL, ORIGINAL HOLE			9/6/2005		7,060.0		7,068.0		
Other In Hole									
Run Date		Des			OD (in)	Top (ftKB)		Btm (ftKB)	
9/20/2005		Sand plug			3	7,164.0		7,216.0	
Logs									
Date		Type				Top, MD (ftKB)		Btm, MD (ftKB)	
10/9/1993		GAMMA RAY				550.0		7,250.0	
10/9/1993		INDUCTION				550.0		7,250.0	
10/12/1993		CEMENT BOND				13.0		7,208.0	
5/15/2017		GYRO				0.0		7,000.0	
Plug Back Total Depths									
Date		Type		Com				Depth (ftKB)	
10/12/1993		FILL		DEPTH LOGGER ON CBL				7,208.0	
11/17/2005		FILL		C/O TO LAND TBG				7,164.0	