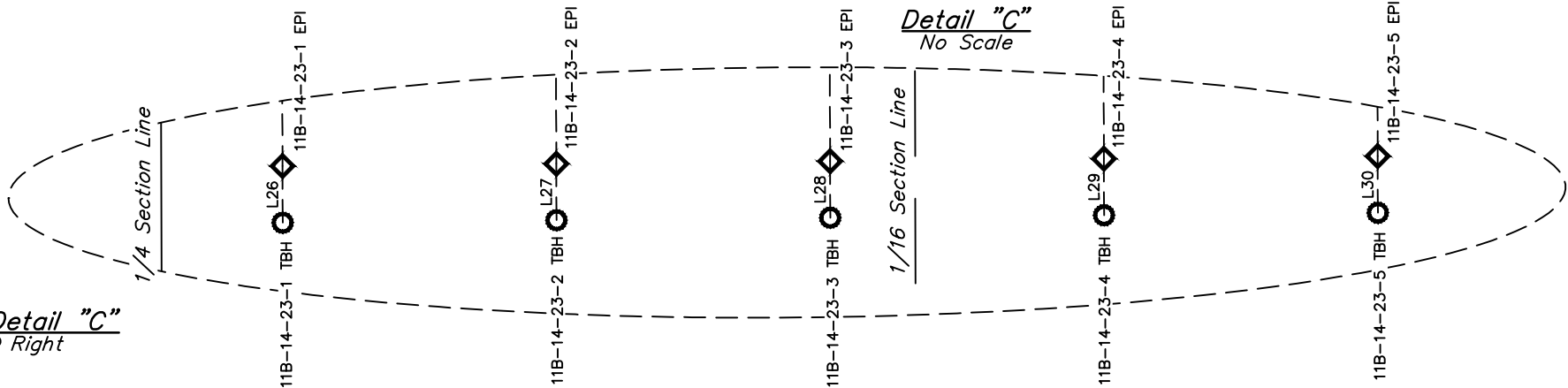
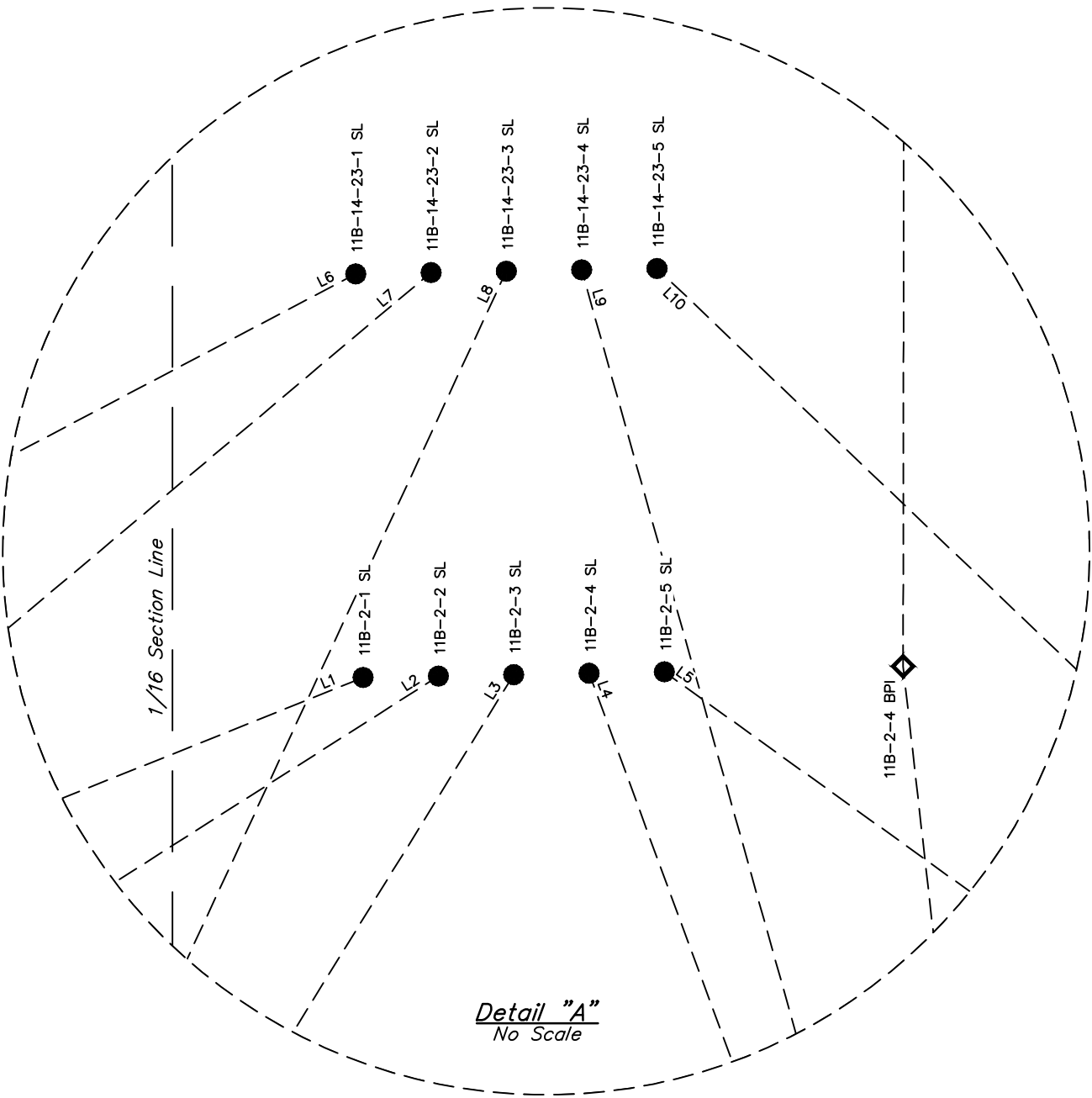
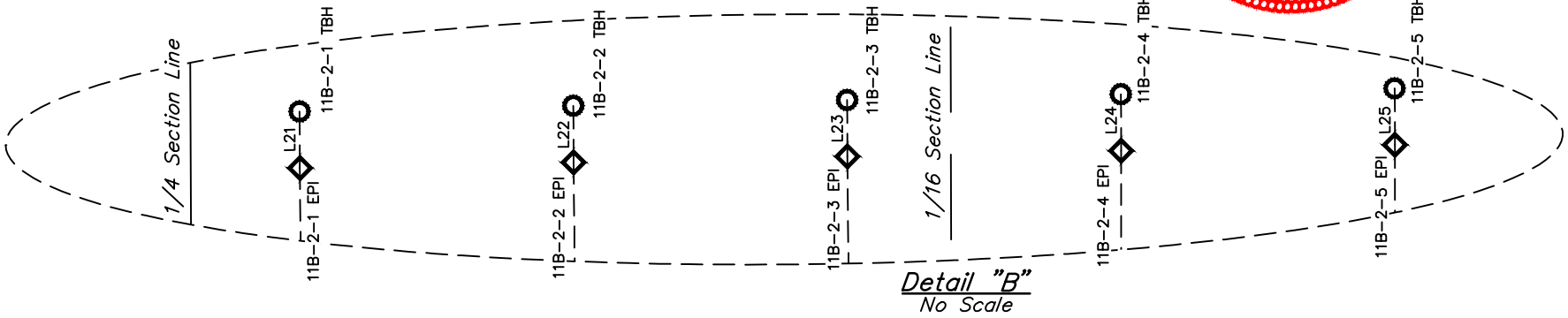
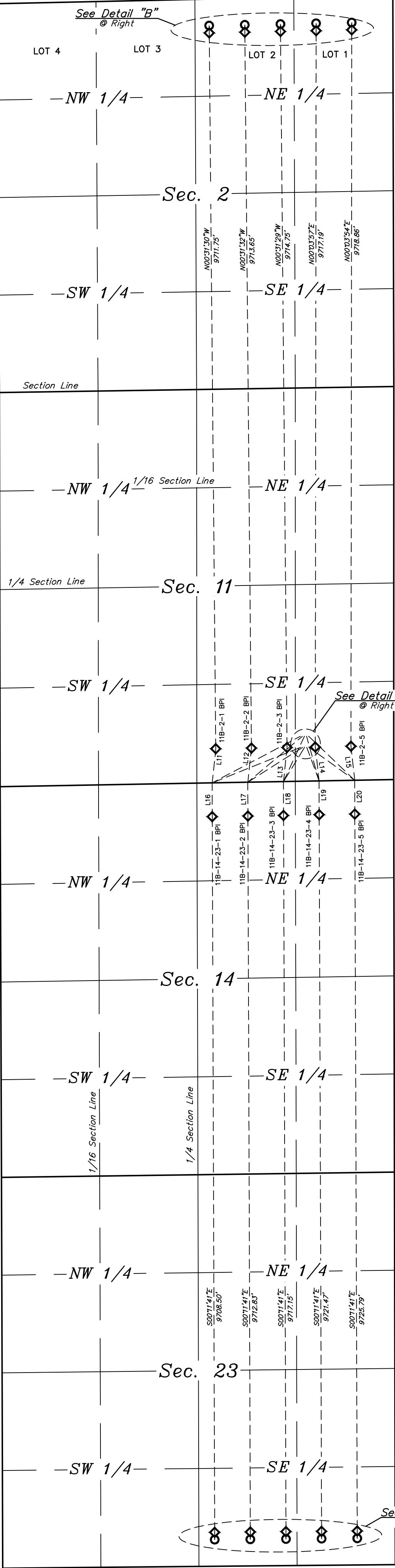


N LEGEND:
● = SURFACE LOCATION.
○ = TARGET BOTTOM HOLE.
◇ = PRODUCTION INTERVAL.
SL = SURFACE LOCATION.
TBH = TARGET BOTTOM HOLE.
BPI = BEG. PROD. INTERVAL.
EPI = ENDING PROD. INTERVAL.

T6N
T5N



LINE TABLE		
LINE	DIRECTION	LENGTH
L1	S68°06'59"W	1292.36'
L2	S57°30'04"W	881.24'
L3	S31°41'28"W	546.79'
L4	S20°15'51"E	487.20'
L5	S54°18'19"E	769.25'
L6	S62°11'22"W	1353.95'
L7	S49°56'43"W	968.85'
L8	S24°54'05"W	678.32'
L9	S15°40'37"E	630.49'
L10	S46°17'12"E	866.54'
L11	N05°58'46"E	463.47'
L12	N05°59'45"E	463.08'
L13	N05°58'05"E	463.46'
L14	N06°27'19"W	462.53'
L15	N06°26'46"W	462.35'
L16	S00°11'41"E	460.05'
L17	S00°11'41"E	460.05'
L18	S00°11'41"E	460.05'
L19	S00°11'41"E	460.05'
L20	S00°11'41"E	460.05'
L21	N00°21'43"W	100.01'
L22	N00°21'43"W	100.01'
L23	N00°21'43"W	100.01'
L24	N00°21'43"W	100.01'
L25	N00°21'43"W	100.01'
L26	S00°11'15"E	100.00'
L27	S00°11'15"E	100.00'
L28	S00°11'15"E	100.00'
L29	S00°11'15"E	100.00'
L30	S00°11'15"E	100.00'



NOTES:

REV: 1 02-27-19 C.IVIE (SL & BPI MOVE)

BISON OIL & GAS II

GROTHER 5-61 11B PAD
SE 1/4 SE 1/4, SECTION 11, T5N, R61W, 6th P.M.
WELD COUNTY, COLORADO

SURVEYED BY	RYAN WILLIAMS, O.R.	02-18-19	SCALE
DRAWN BY	K.B.	02-19-19	1" = 1000'
MULTI-Well PLAN			FIGURE #3