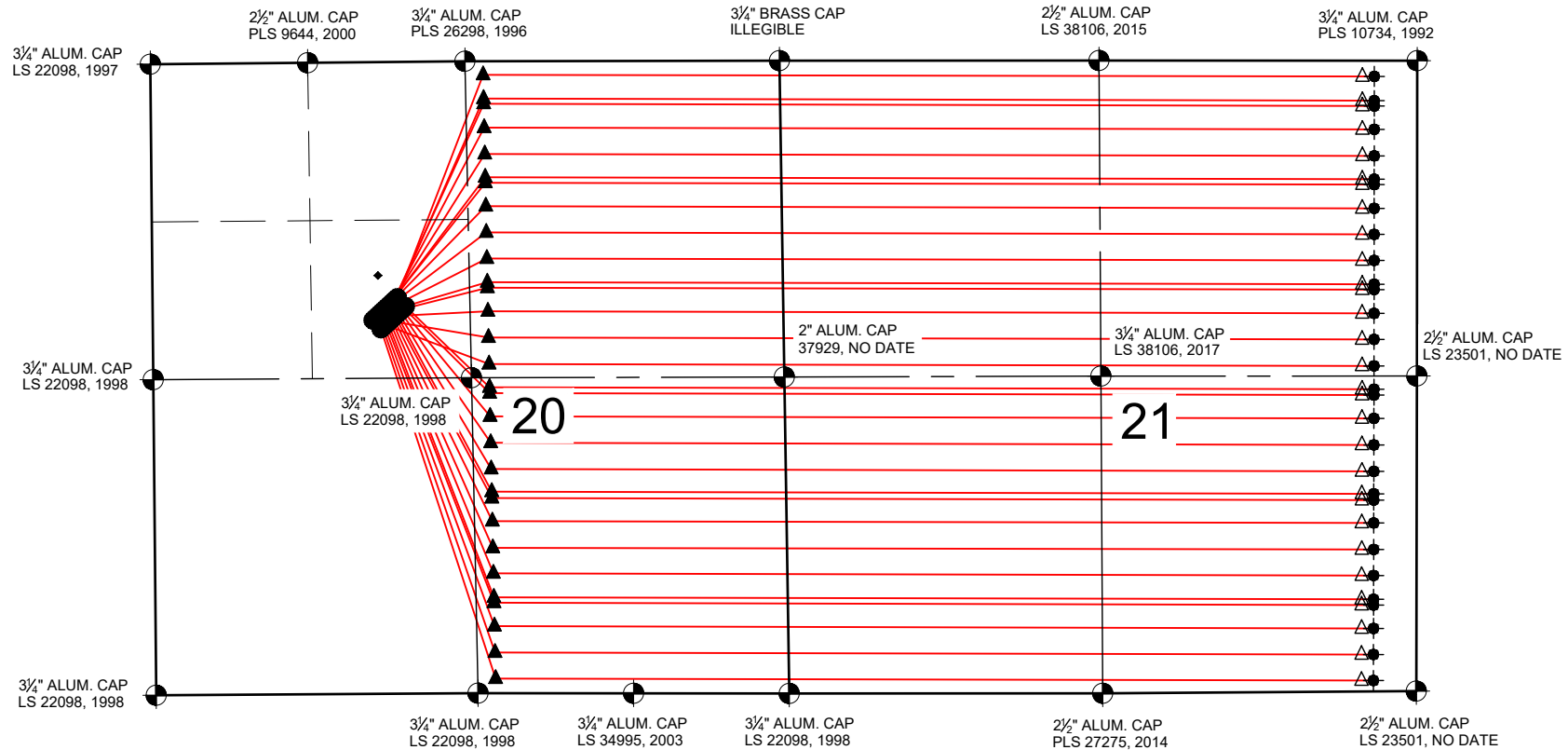


# STUGART STATE 6-20 PAD MULTI-WELL PLAN

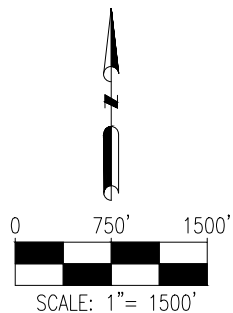


## NOTES:



1. THIS FIELD SURVEY CONFORMS TO THE MINIMUM STANDARDS SET BY THE C.O.G.C.C., RULE NO. 215
2. ALL DISTANCES AND BEARINGS SHOWN HEREON ARE GROUND VALUES AS GPS MEASURED IN THE FIELD, WITH TIES TO WELLS MEASURED PERPENDICULAR TO SECTION LINES. THIS LOW DISTORTION PROJECTION (LDP) IS BASED ON THE NORTH AMERICAN DATUM OF 1983, U.S. SURVEY FOOT WITH A LATITUDE ORIGIN OF 40.392315°, A CENTRAL MERIDIAN LONGITUDE OF -104.794248°, AND A SCALE FACTOR ON THE CENTRAL MERIDIAN OF 1.000228 (EXACT). THE LDP BASIS OF BEARINGS IS GEODETIC NORTH.
3. FIELD VERIFICATION OF MONUMENTS COMPLETED WITHIN 1 YEAR OF SIGNATURE DATE.

## LEGEND

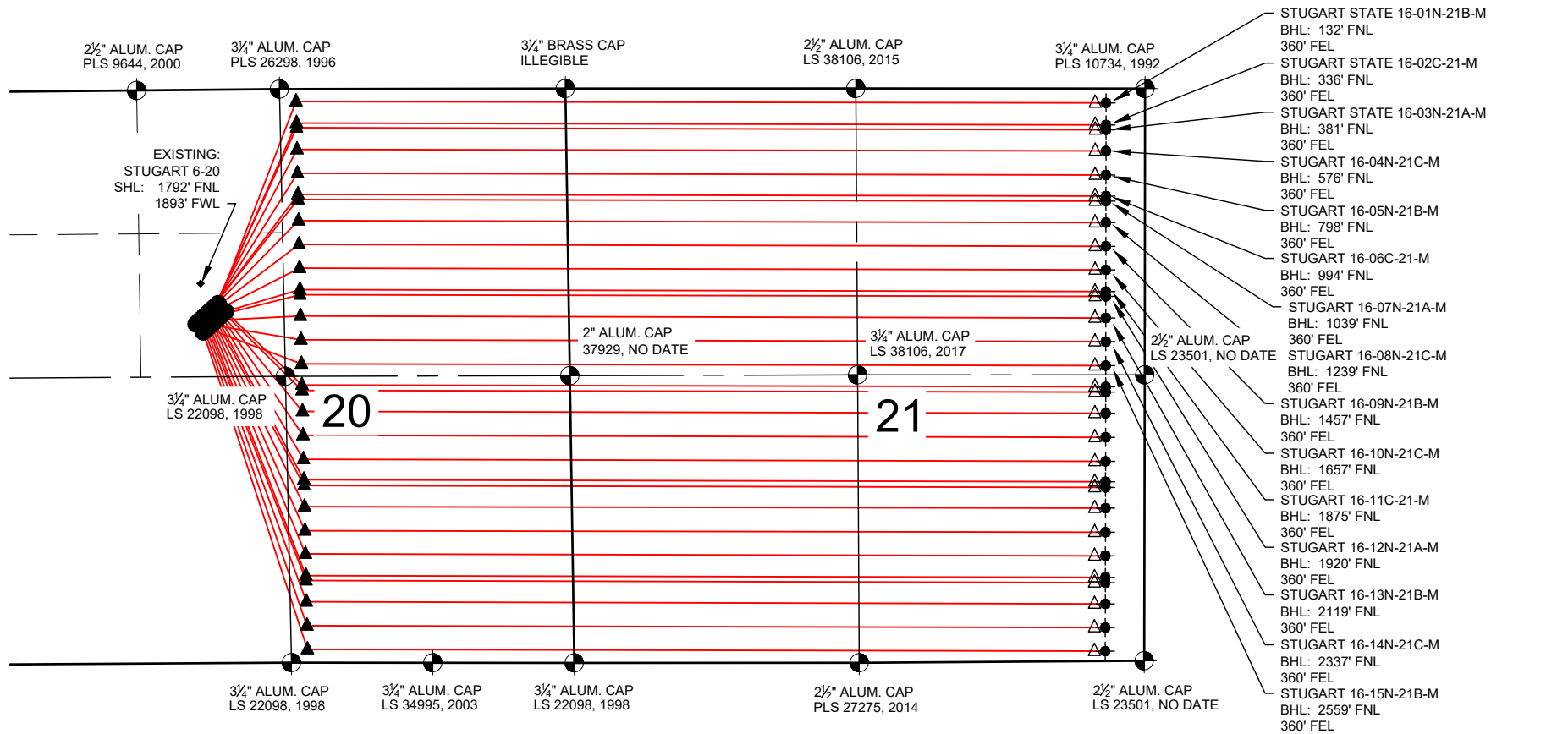
- |                         |                                 |
|-------------------------|---------------------------------|
| ● = EXISTING MONUMENT   | △ = BOTTOM OF PRODUCTION ZONE   |
| ○ = CALCULATED POSITION | ▲ = TOP OF PRODUCTION ZONE      |
| ● = PROPOSED WELL       | TPZ = TOP OF PRODUCTION ZONE    |
| ◆ = EXISTING WELL       | BHL = BOTTOM HOLE LOCATION      |
| ⬮ = BOTTOM HOLE         | BPZ = BOTTOM OF PRODUCTION ZONE |



SHEET 1 OF 7

 <b>ASCENT</b> GEOMATICS SOLUTIONS	8620 Wolff Court Westminster, CO 80031 (303) 928-7128 www.ascentgeomatics.com		FIELD DATE: <b>11-09-17</b>		WELL NAME: <b>STUGART STATE 6-20 PAD</b>		PREPARED FOR:  
			DRAWING DATE: <b>03-03-20</b>		SURFACE LOCATION: <b>SE 1/4 NW 1/4 SEC. 20, T5N, R66W, 6TH P.M. WELD COUNTY, COLORADO</b>		
	BY: <b>CSG</b>		CHECKED BY: <b>IJM</b>				

# STUGART STATE 6-20 PAD MULTI-WELL PLAN

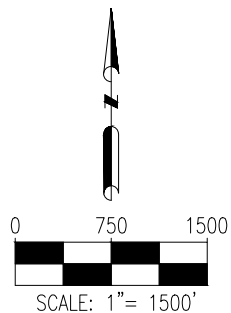


## NOTES:

1. THIS FIELD SURVEY CONFORMS TO THE MINIMUM STANDARDS SET BY THE C.O.G.C.C., RULE NO. 215
2. ALL DISTANCES AND BEARINGS SHOWN HEREON ARE GROUND VALUES AS GPS MEASURED IN THE FIELD, WITH TIES TO WELLS MEASURED PERPENDICULAR TO SECTION LINES. THIS LOW DISTORTION PROJECTION (LDP) IS BASED ON THE NORTH AMERICAN DATUM OF 1983, U.S. SURVEY FOOT WITH A LATITUDE ORIGIN OF 40.392315°, A CENTRAL MERIDIAN LONGITUDE OF -104.794248°, AND A SCALE FACTOR ON THE CENTRAL MERIDIAN OF 1.000228 (EXACT). THE LDP BASIS OF BEARINGS IS GEODETIC NORTH.
3. FIELD VERIFICATION OF MONUMENTS COMPLETED WITHIN 1 YEAR OF SIGNATURE DATE.

## LEGEND

- = EXISTING MONUMENT
- = CALCULATED POSITION
- ◆ = PROPOSED WELL
- ◆ = EXISTING WELL
- ⬇ = BOTTOM HOLE
- △ = BOTTOM OF PRODUCTION ZONE
- ▲ = TOP OF PRODUCTION ZONE
- TPZ = TOP OF PRODUCTION ZONE
- BHL = BOTTOM HOLE LOCATION
- BPZ = BOTTOM OF PRODUCTION ZONE



FIELD DATE:  
11-09-17

DRAWING DATE:  
03-03-20

BY:  
CSG

CHECKED BY:  
IJM

WELL NAME:

STUGART STATE 6-20 PAD

SURFACE LOCATION:

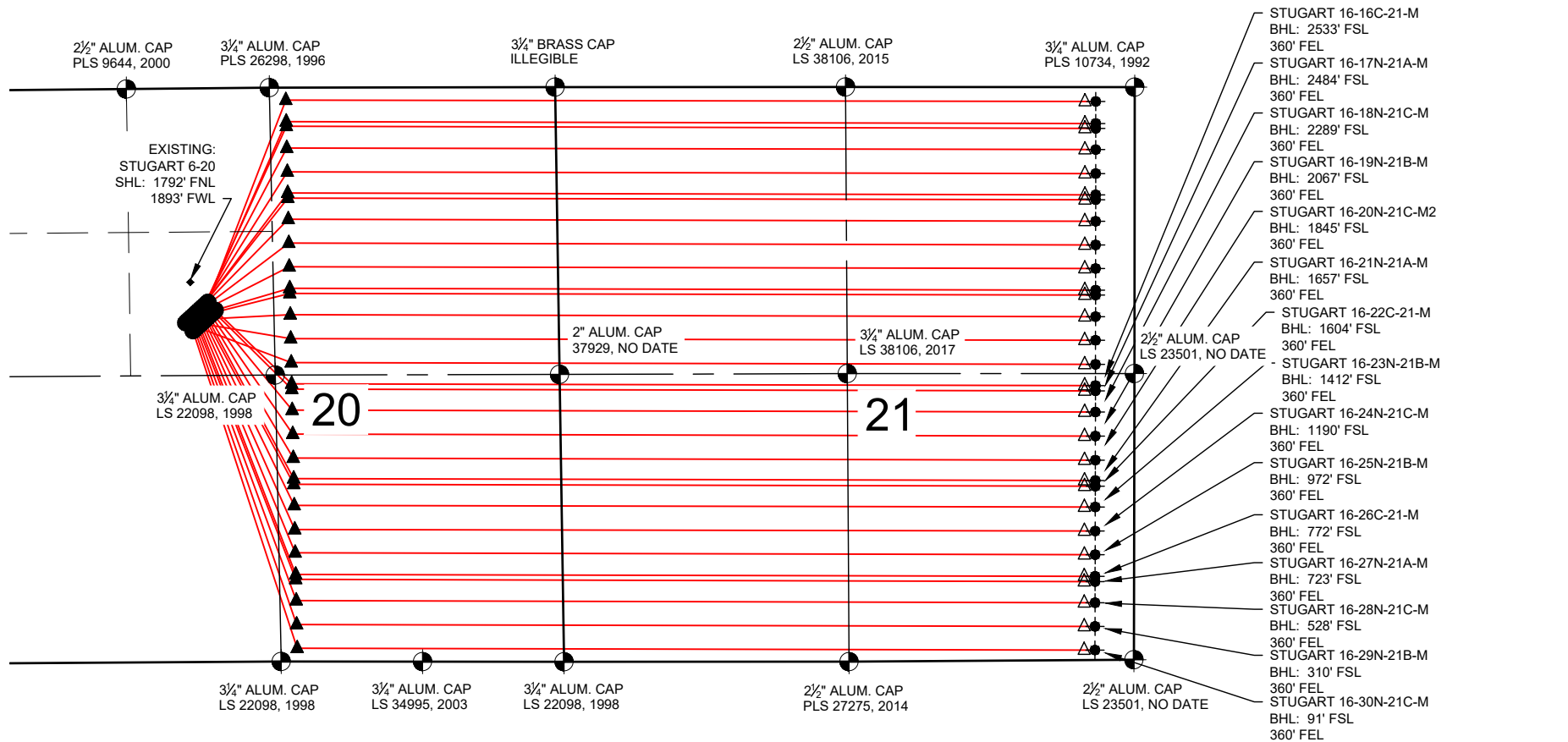
SE 1/4 NW 1/4 SEC. 20, T5N, R66W, 6TH P.M.  
WELD COUNTY, COLORADO

PREPARED FOR:



SHEET 2 OF 7

# STUGART STATE 6-20 PAD MULTI-WELL PLAN

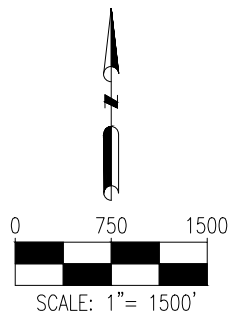


## NOTES:

1. THIS FIELD SURVEY CONFORMS TO THE MINIMUM STANDARDS SET BY THE C.O.G.C.C., RULE NO. 215
2. ALL DISTANCES AND BEARINGS SHOWN HEREON ARE GROUND VALUES AS GPS MEASURED IN THE FIELD, WITH TIES TO WELLS MEASURED PERPENDICULAR TO SECTION LINES. THIS LOW DISTORTION PROJECTION (LDP) IS BASED ON THE NORTH AMERICAN DATUM OF 1983, U.S. SURVEY FOOT WITH A LATITUDE ORIGIN OF 40.392315°, A CENTRAL MERIDIAN LONGITUDE OF -104.794248°, AND A SCALE FACTOR ON THE CENTRAL MERIDIAN OF 1.000228 (EXACT). THE LDP BASIS OF BEARINGS IS GEODETIC NORTH.
3. FIELD VERIFICATION OF MONUMENTS COMPLETED WITHIN 1 YEAR OF SIGNATURE DATE.

## LEGEND

- = EXISTING MONUMENT
- = CALCULATED POSITION
- = PROPOSED WELL
- ◆ = EXISTING WELL
- ⬮ = BOTTOM HOLE
- △ = BOTTOM OF PRODUCTION ZONE
- ▲ = TOP OF PRODUCTION ZONE
- TPZ = TOP OF PRODUCTION ZONE
- BHL = BOTTOM HOLE LOCATION
- BPZ = BOTTOM OF PRODUCTION ZONE



SHEET 3 OF 7



FIELD DATE:  
11-09-17  
DRAWING DATE:  
03-03-20  
BY:  
CSG  
CHECKED BY:  
IJM

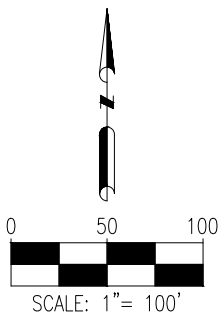
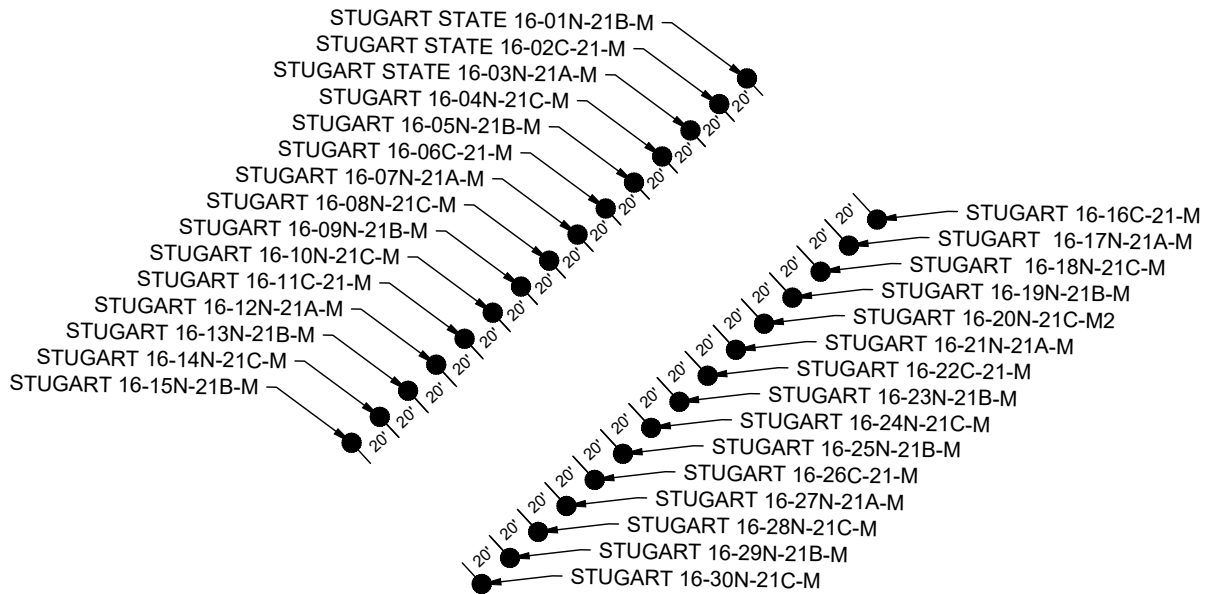
WELL NAME:  
STUGART STATE 6-20 PAD  
SURFACE LOCATION:  
SE 1/4 NW 1/4 SEC. 20, T5N, R66W, 6TH P.M.  
WELD COUNTY, COLORADO

PREPARED FOR:



# STUGART STATE 6-20 PAD MULTI-WELL PLAN

EXISTING:  
STUGART 6-20



## LEGEND

- = PROPOSED WELL
- ◆ = EXISTING WELL

SHEET 4 OF 7

FIELD DATE:  
11-09-17

DRAWING DATE:  
05-07-19

BY:  
CSG

CHECKED BY:  
JAG

WELL NAME:  
STUGART STATE 6-20 PAD

SURFACE LOCATION:  
SE 1/4 NW 1/4 SEC. 20, T5N, R66W, 6TH P.M.  
WELD COUNTY, COLORADO

PREPARED FOR:

## STUGART STATE 6-20 PAD MULTI-WELL PLAN

### STUGART STATE 16-01N-21B-M

SURFACE HOLE	TOP OF PRODUCTION ZONE	BOTTOM OF PRODUCTION ZONE	BOTTOM HOLE	FORMATION
1976' FNL & 2055' FWL	115' FNL & 2489' FEL	132' FNL & 460' FEL	132' FNL & 360' FEL	NIOBRARA
LAT: 40.386863°	LAT: 40.391986°	LAT: 40.391950°	LAT: 40.391950°	
LONG: -104.805753°	LONG: -104.803175°	LONG: -104.776694°	LONG: -104.776335°	

### STUGART STATE 16-02C-21-M

SURFACE HOLE	TOP OF PRODUCTION ZONE	BOTTOM OF PRODUCTION ZONE	BOTTOM HOLE	FORMATION
1989' FNL & 2040' FWL	314' FNL & 2488' FEL	335' FNL & 460' FEL	336' FNL & 360' FEL	CODELL
LAT: 40.386826°	LAT: 40.391441°	LAT: 40.391393°	LAT: 40.391392°	
LONG: -104.805806°	LONG: -104.803160°	LONG: -104.776695°	LONG: -104.776336°	

### STUGART STATE 16-03N-21A-M

SURFACE HOLE	TOP OF PRODUCTION ZONE	BOTTOM OF PRODUCTION ZONE	BOTTOM HOLE	FORMATION
2003' FNL & 2025' FWL	357' FNL & 2487' FEL	381' FNL & 460' FEL	381' FNL & 360' FEL	NIOBRARA
LAT: 40.386788°	LAT: 40.391322°	LAT: 40.391269°	LAT: 40.391268°	
LONG: -104.805858°	LONG: -104.803157°	LONG: -104.776695°	LONG: -104.776336°	

### STUGART 16-04N-21C-M

SURFACE HOLE	TOP OF PRODUCTION ZONE	BOTTOM OF PRODUCTION ZONE	BOTTOM HOLE	FORMATION
2016' FNL & 2010' FWL	557' FNL & 2486' FEL	576' FNL & 460' FEL	576' FNL & 360' FEL	NIOBRARA
LAT: 40.386751°	LAT: 40.390772°	LAT: 40.390732°	LAT: 40.390731°	
LONG: -104.805911°	LONG: -104.803142°	LONG: -104.776696°	LONG: -104.776337°	

### STUGART 16-05N-21B-M

SURFACE HOLE	TOP OF PRODUCTION ZONE	BOTTOM OF PRODUCTION ZONE	BOTTOM HOLE	FORMATION
2030' FNL & 1996' FWL	778' FNL & 2485' FEL	798' FNL & 460' FEL	798' FNL & 360' FEL	NIOBRARA
LAT: 40.386714°	LAT: 40.390167°	LAT: 40.390123°	LAT: 40.390122°	
LONG: -104.805964°	LONG: -104.803125°	LONG: -104.776697°	LONG: -104.776338°	

### STUGART 16-06C-21-M

SURFACE HOLE	TOP OF PRODUCTION ZONE	BOTTOM OF PRODUCTION ZONE	BOTTOM HOLE	FORMATION
2043' FNL & 1981' FWL	973' FNL & 2484' FEL	994' FNL & 460' FEL	994' FNL & 360' FEL	CODELL
LAT: 40.386677°	LAT: 40.389632°	LAT: 40.389586°	LAT: 40.389585°	
LONG: -104.806017°	LONG: -104.803111°	LONG: -104.776698°	LONG: -104.776339°	

### STUGART 16-07N-21A-M

SURFACE HOLE	TOP OF PRODUCTION ZONE	BOTTOM OF PRODUCTION ZONE	BOTTOM HOLE	FORMATION
2056' FNL & 1966' FWL	1020' FNL & 2484' FEL	1039' FNL & 460' FEL	1039' FNL & 360' FEL	NIOBRARA
LAT: 40.386640°	LAT: 40.389503°	LAT: 40.389462°	LAT: 40.389461°	
LONG: -104.806070°	LONG: -104.803107°	LONG: -104.776698°	LONG: -104.776339°	

### STUGART 16-08N-21C-M

SURFACE HOLE	TOP OF PRODUCTION ZONE	BOTTOM OF PRODUCTION ZONE	BOTTOM HOLE	FORMATION
2070' FNL & 1951' FWL	1215' FNL & 2483' FEL	1238' FNL & 460' FEL	1239' FNL & 360' FEL	NIOBRARA
LAT: 40.386602°	LAT: 40.388967°	LAT: 40.388914°	LAT: 40.388914°	
LONG: -104.806122°	LONG: -104.803093°	LONG: -104.776699°	LONG: -104.776340°	

### STUGART 16-09N-21B-M

SURFACE HOLE	TOP OF PRODUCTION ZONE	BOTTOM OF PRODUCTION ZONE	BOTTOM HOLE	FORMATION
2083' FNL & 1936' FWL	1435' FNL & 2481' FEL	1457' FNL & 460' FEL	1457' FNL & 360' FEL	NIOBRARA
LAT: 40.386565°	LAT: 40.388362°	LAT: 40.388315°	LAT: 40.388315°	
LONG: -104.806175°	LONG: -104.803076°	LONG: -104.776700°	LONG: -104.776341°	

### STUGART 16-10N-21C-M

SURFACE HOLE	TOP OF PRODUCTION ZONE	BOTTOM OF PRODUCTION ZONE	BOTTOM HOLE	FORMATION
2097' FNL & 1921' FWL	1654' FNL & 2480' FEL	1675' FNL & 460' FEL	1675' FNL & 360' FEL	NIOBRARA
LAT: 40.386528°	LAT: 40.387763°	LAT: 40.387716°	LAT: 40.387716°	
LONG: -104.806228°	LONG: -104.803060°	LONG: -104.776701°	LONG: -104.776342°	



### STUGART 16-11C-21-M

SURFACE HOLE	TOP OF PRODUCTION ZONE	BOTTOM OF PRODUCTION ZONE	BOTTOM HOLE	FORMATION
2110' FNL & 1907' FWL	1853' FNL & 2479' FEL	1874' FNL & 460' FEL	1875' FNL & 360' FEL	CODELL
LAT: 40.386491°	LAT: 40.387217°	LAT: 40.387169°	LAT: 40.387169°	
LONG: -104.806281°	LONG: -104.803045°	LONG: -104.776702°	LONG: -104.776343°	

### STUGART 16-12N-21A-M

SURFACE HOLE	TOP OF PRODUCTION ZONE	BOTTOM OF PRODUCTION ZONE	BOTTOM HOLE	FORMATION
2124' FNL & 1892' FWL	1900' FNL & 2479' FEL	1920' FNL & 460' FEL	1920' FNL & 360' FEL	NIOBRARA
LAT: 40.386454°	LAT: 40.387088°	LAT: 40.387045°	LAT: 40.387045°	
LONG: -104.806333°	LONG: -104.803041°	LONG: -104.776702°	LONG: -104.776343°	

SHEET 5 OF 7

 <p style="font-size: 8px;">8620 Wolff Court Westminster, CO 80031 (303) 928-7128 www.ascentgeomatics.com</p>	FIELD DATE: <b>11-09-17</b>	WELL NAME: <b>STUGART STATE 6-20 PAD</b>	<p>PREPARED FOR:</p> 	
	DRAWING DATE: <b>05-07-19</b>	SURFACE LOCATION: <b>SE 1/4 NW 1/4 SEC. 20, T5N, R66W, 6TH P.M.</b>		
	BY: <b>CSG</b>	CHECKED BY: <b>JAG</b>		<b>WELD COUNTY, COLORADO</b>

## STUGART STATE 6-20 PAD MULTI-WELL PLAN

### STUGART 16-13N-21B-M

SURFACE HOLE 2137' FNL & 1877' FWL LAT: 40.386416° LONG: -104.806386°	TOP OF PRODUCTION ZONE 2097' FNL & 2478' FEL LAT: 40.386548° LONG: -104.803027°	BOTTOM OF PRODUCTION ZONE 2119' FNL & 460' FEL LAT: 40.386498° LONG: -104.776703°	BOTTOM HOLE 2119' FNL & 360' FEL LAT: 40.386497° LONG: -104.776344°	FORMATION NIOBRARA
--	--	--	--	-----------------------

### STUGART 16-14N-21C-M

SURFACE HOLE 2150' FNL & 1862' FWL LAT: 40.386379° LONG: -104.806439°	TOP OF PRODUCTION ZONE 2317' FNL & 2477' FEL LAT: 40.385943° LONG: -104.803010°	BOTTOM OF PRODUCTION ZONE 2337' FNL & 460' FEL LAT: 40.385899° LONG: -104.776704°	BOTTOM HOLE 2337' FNL & 360' FEL LAT: 40.385898° LONG: -104.776345°	FORMATION NIOBRARA
--	--	--	--	-----------------------

### STUGART 16-15N-21B-M

SURFACE HOLE 2164' FNL & 1847' FWL LAT: 40.386342° LONG: -104.806492°	TOP OF PRODUCTION ZONE 2539' FNL & 2475' FEL LAT: 40.385333° LONG: -104.802994°	BOTTOM OF PRODUCTION ZONE 2559' FNL & 460' FEL LAT: 40.385290° LONG: -104.776705°	BOTTOM HOLE 2559' FNL & 360' FEL LAT: 40.385289° LONG: -104.776346°	FORMATION NIOBRARA
--	--	--	--	-----------------------

### STUGART 16-16C-21-M

SURFACE HOLE 2050' FNL & 2122' FWL LAT: 40.386661° LONG: -104.805510°	TOP OF PRODUCTION ZONE 2564' FSL & 2474' FEL LAT: 40.384798° LONG: -104.802979°	BOTTOM OF PRODUCTION ZONE 2534' FSL & 460' FEL LAT: 40.384753° LONG: -104.776706°	BOTTOM HOLE 2533' FSL & 360' FEL LAT: 40.384752° LONG: -104.776347°	FORMATION CODELL
--	--	--	--	---------------------

### STUGART 16-17N-21A-M

SURFACE HOLE 2064' FNL & 2107' FWL LAT: 40.386624° LONG: -104.805562°	TOP OF PRODUCTION ZONE 2515' FSL & 2474' FEL LAT: 40.384663° LONG: -104.802975°	BOTTOM OF PRODUCTION ZONE 2485' FSL & 460' FEL LAT: 40.384619° LONG: -104.776707°	BOTTOM HOLE 2484' FSL & 360' FEL LAT: 40.384618° LONG: -104.776348°	FORMATION NIOBRARA
--	--	--	--	-----------------------

### STUGART 16-18N-21C-M

SURFACE HOLE 2077' FNL & 2092' FWL LAT: 40.386587° LONG: -104.805615°	TOP OF PRODUCTION ZONE 2321' FSL & 2473' FEL LAT: 40.384130° LONG: -104.802961°	BOTTOM OF PRODUCTION ZONE 2290' FSL & 460' FEL LAT: 40.384082° LONG: -104.776708°	BOTTOM HOLE 2289' FSL & 360' FEL LAT: 40.384081° LONG: -104.776349°	FORMATION NIOBRARA
--	--	--	--	-----------------------

### STUGART 16-19N-21B-M

SURFACE HOLE 2090' FNL & 2077' FWL LAT: 40.386549° LONG: -104.805668°	TOP OF PRODUCTION ZONE 2100' FSL & 2472' FEL LAT: 40.383524° LONG: -104.802944°	BOTTOM OF PRODUCTION ZONE 2068' FSL & 460' FEL LAT: 40.383472° LONG: -104.776710°	BOTTOM HOLE 2067' FSL & 360' FEL LAT: 40.383472° LONG: -104.776351°	FORMATION NIOBRARA
--	--	--	--	-----------------------

### STUGART 16-20N-21C-M2

SURFACE HOLE 2104' FNL & 2063' FWL LAT: 40.386512° LONG: -104.805721°	TOP OF PRODUCTION ZONE 1879' FSL & 2471' FEL LAT: 40.382917° LONG: -104.802928°	BOTTOM OF PRODUCTION ZONE 1846' FSL & 460' FEL LAT: 40.382863° LONG: -104.776711°	BOTTOM HOLE 1845' FSL & 360' FEL LAT: 40.382862° LONG: -104.776352°	FORMATION NIOBRARA
--	--	--	--	-----------------------

### STUGART 16-21N-21A-M

SURFACE HOLE 2117' FNL & 2048' FWL LAT: 40.386475° LONG: -104.805773°	TOP OF PRODUCTION ZONE 1689' FSL & 2470' FEL LAT: 40.382397° LONG: -104.802913°	BOTTOM OF PRODUCTION ZONE 1657' FSL & 460' FEL LAT: 40.382347° LONG: -104.776713°	BOTTOM HOLE 1657' FSL & 360' FEL LAT: 40.382346° LONG: -104.776354°	FORMATION NIOBRARA
--	--	--	--	-----------------------

### STUGART 16-22C-21-M

SURFACE HOLE 2131' FNL & 2033' FWL LAT: 40.386438° LONG: -104.805826°	TOP OF PRODUCTION ZONE 1636' FSL & 2470' FEL LAT: 40.382250° LONG: -104.802909°	BOTTOM OF PRODUCTION ZONE 1605' FSL & 460' FEL LAT: 40.382202° LONG: -104.776713°	BOTTOM HOLE 1604' FSL & 360' FEL LAT: 40.382201° LONG: -104.776354°	FORMATION CODELL
--	--	--	--	---------------------

### STUGART 16-23N-21B-M

SURFACE HOLE 2144' FNL & 2018' FWL LAT: 40.386401° LONG: -104.805879°	TOP OF PRODUCTION ZONE 1442' FSL & 2469' FEL LAT: 40.381717° LONG: -104.802895°	BOTTOM OF PRODUCTION ZONE 1413' FSL & 460' FEL LAT: 40.381676° LONG: -104.776714°	BOTTOM HOLE 1412' FSL & 360' FEL LAT: 40.381675° LONG: -104.776356°	FORMATION NIOBRARA
--	--	--	--	-----------------------

### STUGART 16-24N-21C-M

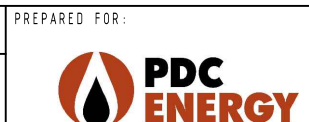
SURFACE HOLE 2157' FNL & 2003' FWL LAT: 40.386363° LONG: -104.805932°	TOP OF PRODUCTION ZONE 1218' FSL & 2467' FEL LAT: 40.381105° LONG: -104.802878°	BOTTOM OF PRODUCTION ZONE 1191' FSL & 460' FEL LAT: 40.381066° LONG: -104.776716°	BOTTOM HOLE 1190' FSL & 360' FEL LAT: 40.381066° LONG: -104.776357°	FORMATION NIOBRARA
--	--	--	--	-----------------------

SHEET 6 OF 7



FIELD DATE: 11-09-17	
DRAWING DATE: 05-07-19	
BY: CSG	CHECKED BY: JAG

WELL NAME: STUGART STATE 6-20 PAD
SURFACE LOCATION: SE 1/4 NW 1/4 SEC. 20, T5N, R66W, 6TH P.M. WELD COUNTY, COLORADO



# STUGART STATE 6-20 PAD MULTI-WELL PLAN

## STUGART 16-25N-21B-M

SURFACE HOLE  
2171' FNL & 1988' FWL  
LAT: 40.386326°  
LONG: -104.805985°

TOP OF PRODUCTION ZONE  
1004' FSL & 2466' FEL  
LAT: 40.380517°  
LONG: -104.802862°

BOTTOM OF PRODUCTION ZONE  
973' FSL & 460' FEL  
LAT: 40.380467°  
LONG: -104.776718°

BOTTOM HOLE  
972' FSL & 360' FEL  
LAT: 40.380467°  
LONG: -104.776359°

FORMATION  
NIOBRARA

## STUGART 16-26C-21-M

SURFACE HOLE  
2184' FNL & 1974' FWL  
LAT: 40.386289°  
LONG: -104.806037°

TOP OF PRODUCTION ZONE  
803' FSL & 2465' FEL  
LAT: 40.379965°  
LONG: -104.802847°

BOTTOM OF PRODUCTION ZONE  
773' FSL & 460' FEL  
LAT: 40.379920°  
LONG: -104.776719°

BOTTOM HOLE  
772' FSL & 360' FEL  
LAT: 40.379919°  
LONG: -104.776360°

FORMATION  
CODELL

## STUGART 16-27N-21A-M

SURFACE HOLE  
2198' FNL & 1959' FWL  
LAT: 40.386252°  
LONG: -104.806090°

TOP OF PRODUCTION ZONE  
759' FSL & 2465' FEL  
LAT: 40.379843°  
LONG: -104.802843°

BOTTOM OF PRODUCTION ZONE  
724' FSL & 460' FEL  
LAT: 40.379786°  
LONG: -104.776720°

BOTTOM HOLE  
723' FSL & 360' FEL  
LAT: 40.379785°  
LONG: -104.776361°

FORMATION  
NIOBRARA

## STUGART 16-28N-21C-M

SURFACE HOLE  
2211' FNL & 1944' FWL  
LAT: 40.386215°  
LONG: -104.806143°

TOP OF PRODUCTION ZONE  
562' FSL & 2464' FEL  
LAT: 40.379304°  
LONG: -104.802828°

BOTTOM OF PRODUCTION ZONE  
529' FSL & 460' FEL  
LAT: 40.379249°  
LONG: -104.776721°

BOTTOM HOLE  
528' FSL & 360' FEL  
LAT: 40.379248°  
LONG: -104.776362°

FORMATION  
NIOBRARA

## STUGART 16-29N-21B-M

SURFACE HOLE  
2225' FNL & 1929' FWL  
LAT: 40.386177°  
LONG: -104.806196°

TOP OF PRODUCTION ZONE  
341' FSL & 2463' FEL  
LAT: 40.378697°  
LONG: -104.802812°

BOTTOM OF PRODUCTION ZONE  
310' FSL & 460' FEL  
LAT: 40.378650°  
LONG: -104.776723°

BOTTOM HOLE  
310' FSL & 360' FEL  
LAT: 40.378649°  
LONG: -104.776364°

FORMATION  
NIOBRARA

## STUGART 16-30N-21C-M

SURFACE HOLE  
2238' FNL & 1914' FWL  
LAT: 40.386140°  
LONG: -104.806248°

TOP OF PRODUCTION ZONE  
123' FSL & 2462' FEL  
LAT: 40.378097°  
LONG: -104.802795°

BOTTOM OF PRODUCTION ZONE  
92' FSL & 460' FEL  
LAT: 40.378051°  
LONG: -104.776724°

BOTTOM HOLE  
91' FSL & 360' FEL  
LAT: 40.378050°  
LONG: -104.776365°

FORMATION  
NIOBRARA

SHEET 7 OF 7