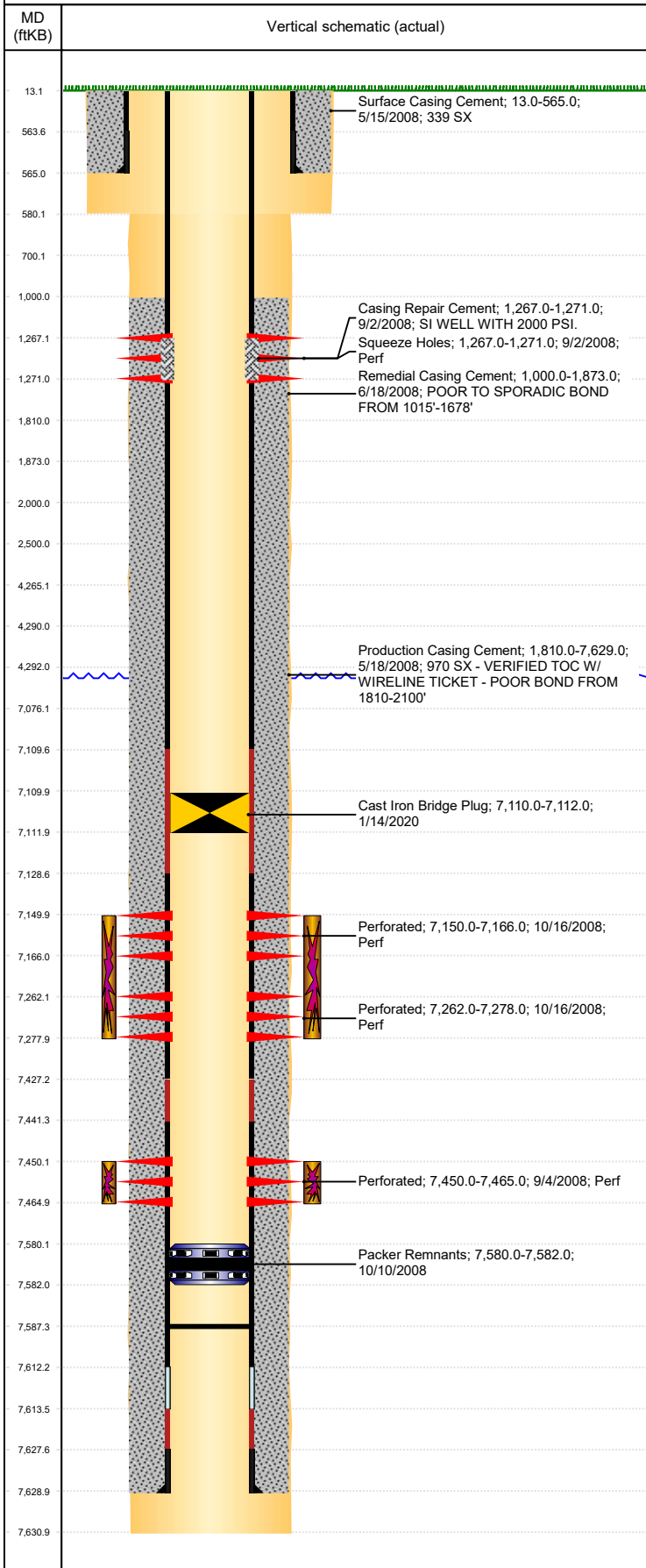


Well Name: WEEZER G03-23

DEVIATED, ORIGINAL HOLE, 3/20/2020 11:44:44 AM



Well Header									
API 05-123-25798		Business Unit DJ BASIN			District 15		Well Config DEVIATED		
KB - GL / MSL (ft... 13.00		Spud Date 5/14/2008		P & A Date		Well Production Status TA			SoRT Yes
Comment FISH @ 7580' - 318Ae LOCATION!! - TARGET DEPTHS: TVD=7183', MD=7631'									
Surface Location (Congressional)									
Qtr 3 SE	Qtr 4 SW	Section 3	Twnshp 4	Twنش... N	Range 65	Rng E/... W	Actual Latitude (°) 40.33595598	Actual Longitude (°) -104.65134530	
Wellbore Sections									
Section Des			Size (in)			Act Top, MD (ftKB)		Act Btm, MD (ftKB)	
SURFACE			12 1/4			13		580	
PRODUCTION			7 7/8			580		7,631	
Casing Strings									
Csg Des			Run Date	OD (in)	Wt/Len (lb/ft)	Grade	Top, MD (ftKB)	MD (ftKB)	
Surface			5/15/2008	8 5/8	24.00	J-55	13.0	565.0	
Production			5/18/2008	4 1/2	11.60	M-80	13.0	7,629.0	
Cement									
Des				Start Date		Top (ftKB)		Btm (ftKB)	
Surface Casing Cement				5/15/2008		13.0		565.0	
Production Casing Cement				5/18/2008		1,810.0		7,629.0	
Remedial Casing Cement				6/18/2008		1,000.0		1,873.0	
Casing Repair Cement				9/2/2008		1,267.0		1,271.0	
Zone Statuses									
Zone Name	Status Date	Status	Fluid Type	Job				Prod Method	
CODELL	10/22/2008	PR		DRILLING/COMPLETION - ORIGINAL, 5/14/2008...					
CODELL	1/14/2020	TA		PLUG AND ABANDON, 1/10/2020 06:00					
NIOBRARA	10/22/2008	PR		DRILLING/COMPLETION - ORIGINAL, 5/14/2008...					
NIOBRARA	1/14/2020	TA		PLUG AND ABANDON, 1/10/2020 06:00					
Perforation Data									
Linked Zone		Bnch/Stg	Entered Shot Total	Top (ftKB)		Btm (ftKB)		Date	
NIOBRARA, ORIGINAL HOLE NIOBRARA, ORIGINAL HOLE CODELL, ORIGINAL HOLE		01		1,267.00		1,271.00		9/2/2008	
		A	64	7,150.00		7,166.00		10/16/2008	
		B	64	7,262.00		7,278.00		10/16/2008	
		01	56	7,450.00		7,465.00		9/4/2008	
Stimulation Intervals									
Zone			Start Date			Top (ftKB)		Btm (ftKB)	
NIOBRARA, ORIGINAL HOLE			10/22/2008			7,150.0		7,278.0	
CODELL, ORIGINAL HOLE			9/29/2008			7,450.0		7,465.0	
Other In Hole									
Run Date		Des				OD (in)	Top (ftKB)	Btm (ftKB)	
10/10/2008		Packer Remnants				3.99	7,580.0	7,582.0	
10/4/2018		Plunger Lift				1 7/8			
1/14/2020		Cast Iron Bridge Plug				4	7,110.0	7,112.0	
Logs									
Date		Type				Top, MD (ftKB)		Btm, MD (ftKB)	
5/17/2008		Caliper/Comp. Density/Neutron/GR/SP/ML				2,500.0		7,609.0	
5/17/2008		DIL/GR/SP/Caliper				565.0		7,629.0	
5/30/2008		CBL/CCL/GR				13.0		2,216.0	
5/30/2008		CBL/CCL/GR				1,680.0		7,879.0	
5/30/2008		Noise log				10.0		2,300.0	
5/30/2008		Radial Cement				0.0		2,216.0	
5/30/2008		Radial Cement				1,680.0		7,579.0	
5/30/2008		Temperature Survey				0.0		2,306.0	
5/30/2008		Temperature Survey				0.0		2,210.0	
1/13/2020		GAMMA RAY				6,600.0		7,510.0	
3/13/2020		USIT/CBL				10.0		7,110.0	
Plug Back Total Depths									
Date		Type		Com				Depth (ftKB)	
10/14/2008		FILL						7,582.0	
11/21/2008		PLUG REMNANTS						7,587.2	