



**CEMENT BOND LOG  
GAMMA RAY  
CCL**

**Company ANADARKO PETROLEUM**  
**Well NRC 23-8**  
**Field WATENBERG**  
**County WELD State COLORADO**

**Location:** API # : 05-123-31229  
SWSE 1043FSL 1413FEL  
LAT:40.06120 LONG:-104.91010  
SEC 8 TWP 1N RGE 67W  
**Permanent Datum KB Elevation 5056'**  
**Log Measured From KB=15'**  
**Drilling Measured From KB**  
**Other Services NONE**  
**Elevation K.B. 5071'**  
**D.F. 5070'**  
**G.L. 5056'**

Date 01-28-2020

**Run Number ONE**  
**Depth Driller 8500'**  
**Depth Logger 1700'**  
**Bottom Logged Interval 1700'**  
**Top Log Interval SURFACE**  
**Open Hole Size 7-7/8"**  
**Type Fluid H2O**  
**Density / Viscosity ~8.3#**  
**Max. Recorded Temp. N/A**  
**Estimated Cement Top SEE LOG**  
**Time Well Ready ROA**  
**Time Logger on Bottom**  
**Equipment Number 058**  
**Recorded By WINDSOR.CO**  
**Witnessed By R.ALLES**  
**RAUL REYES**

**Borehole Record**  
**Run Number Bit From To Size Weight From To**


**Casing Record**  
**Size Wgt/Ft Top Bottom**  
**Surface String 8.63" 24# SURFACE 1016'**  
**Prot. String**  
**Production String 4.5" 11.6# SURFACE 8491'**  
**Liner**

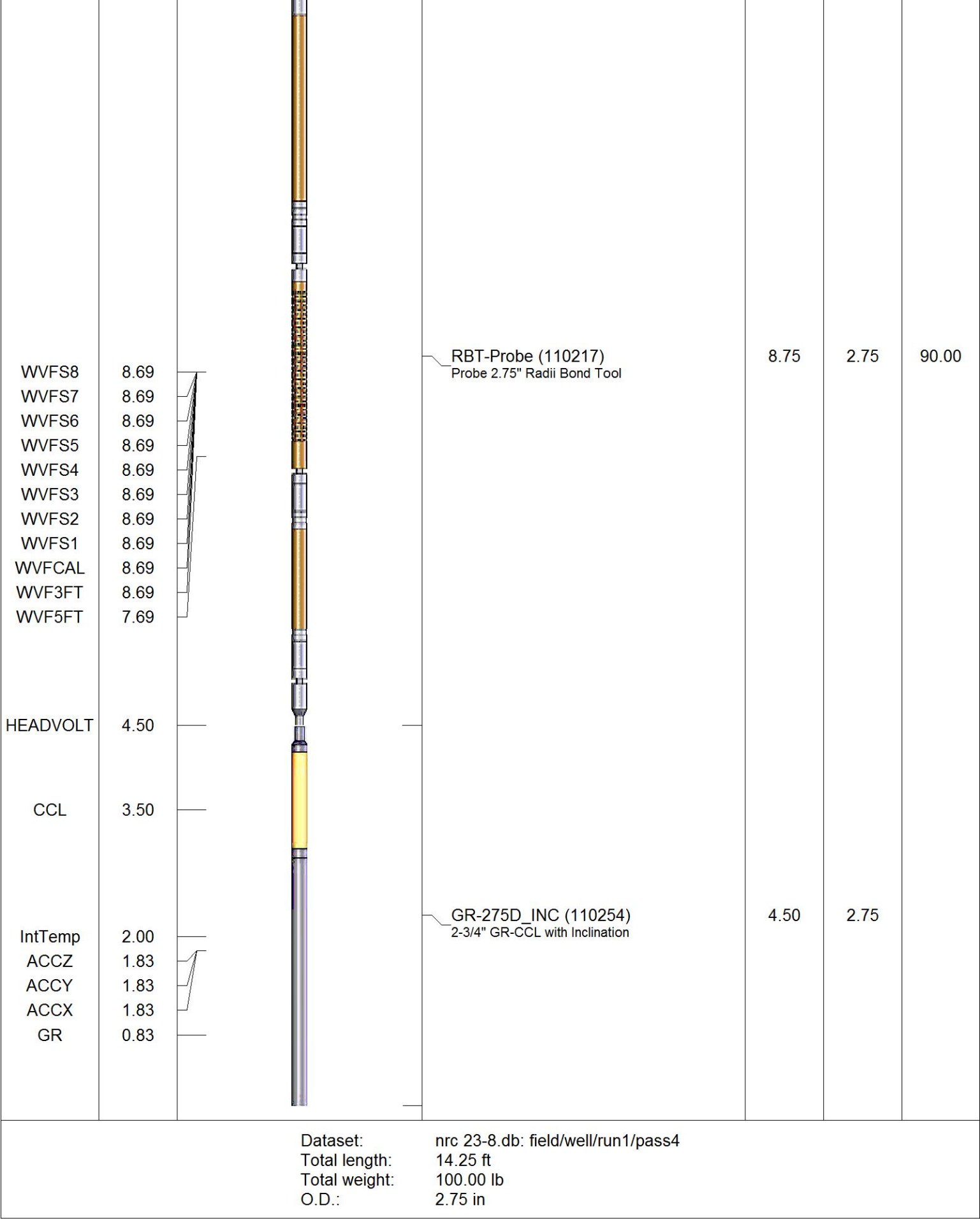
<<< Fold Here >>>

All interpretations are opinions based on inferences from electrical or other measurements and we cannot and do not guarantee the accuracy or correctness of any interpretation, and we shall not, except in the case of gross or willful negligence on our part, be liable or responsible for any loss, costs, damages, or expenses incurred or sustained by anyone resulting from any interpretation made by any of our officers, agents or employees. These interpretations are also subject to our general terms and conditions set out in our current Price Schedule.

**Comments**

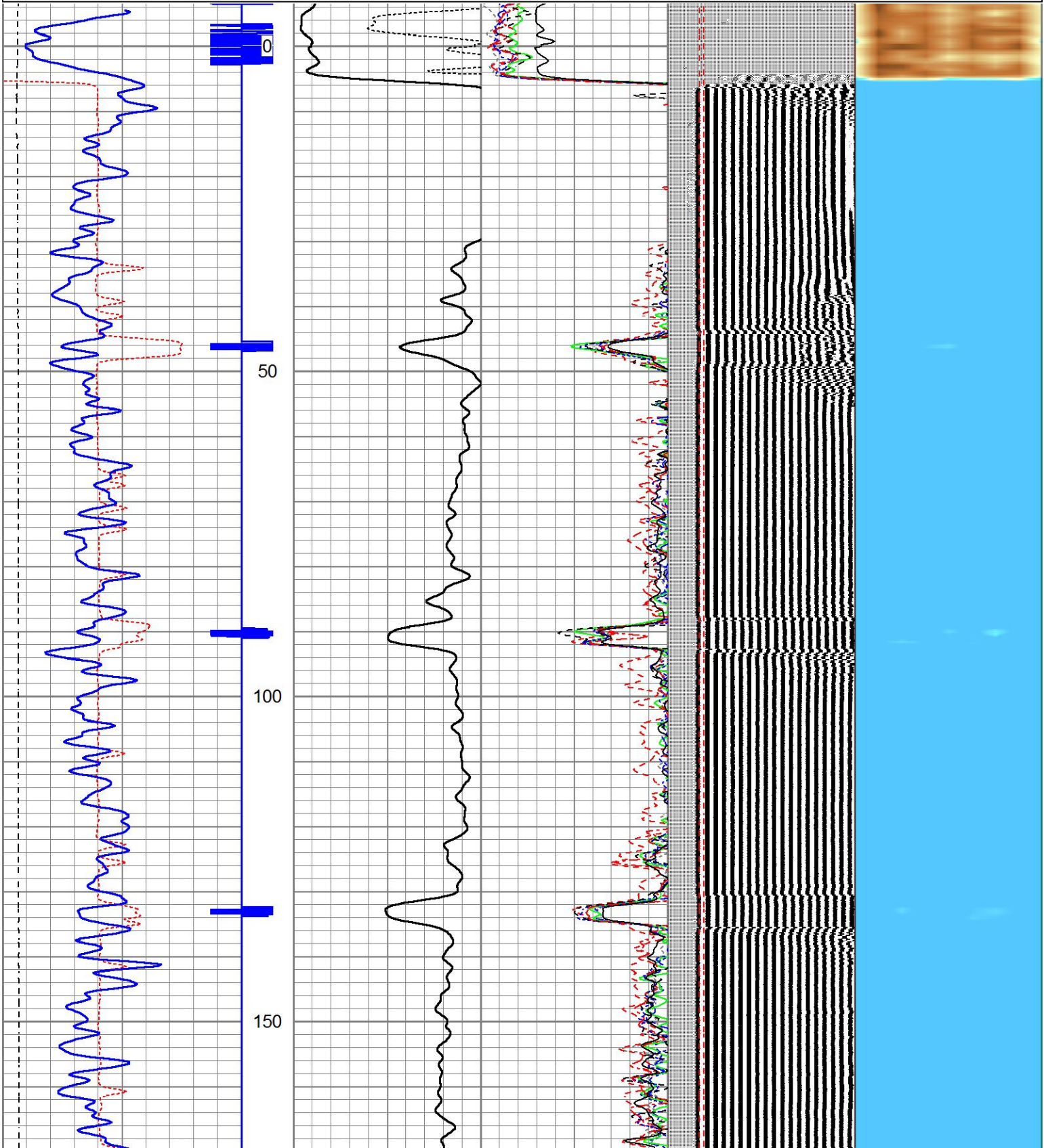
**CEMENT BOND LOG  
LOGGED WITH 0 PSI ON CASING  
THANK YOU FOR USING CUTTERS WIRELINE SERVICE**

Sensor	Offset (ft)	Schematic	Description	Length (ft)	O.D. (in)	Weight (lb)
			CHD-1.4375CHD Titan Cable Head 1 7/16	1.00	1.44	10.00

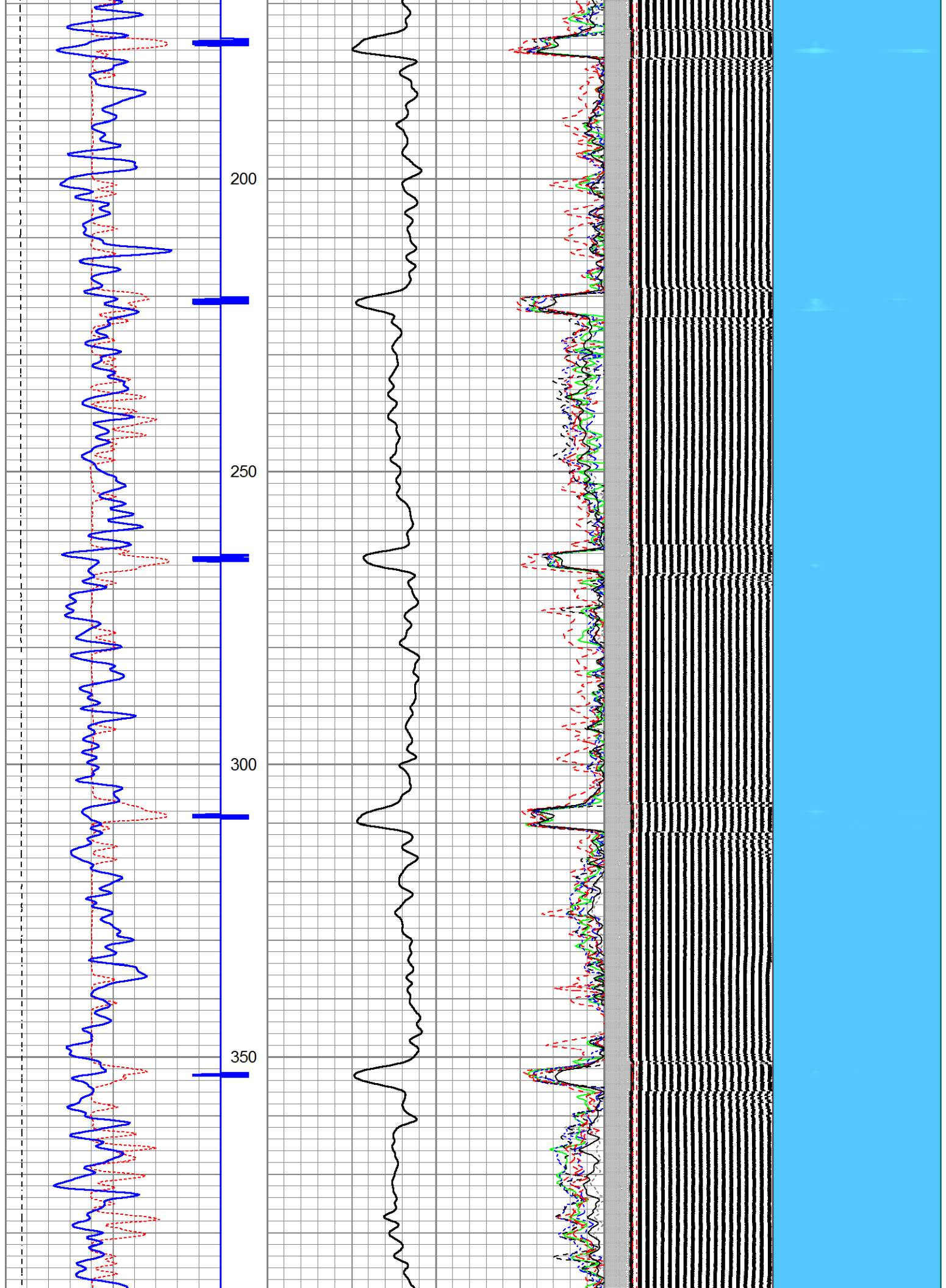


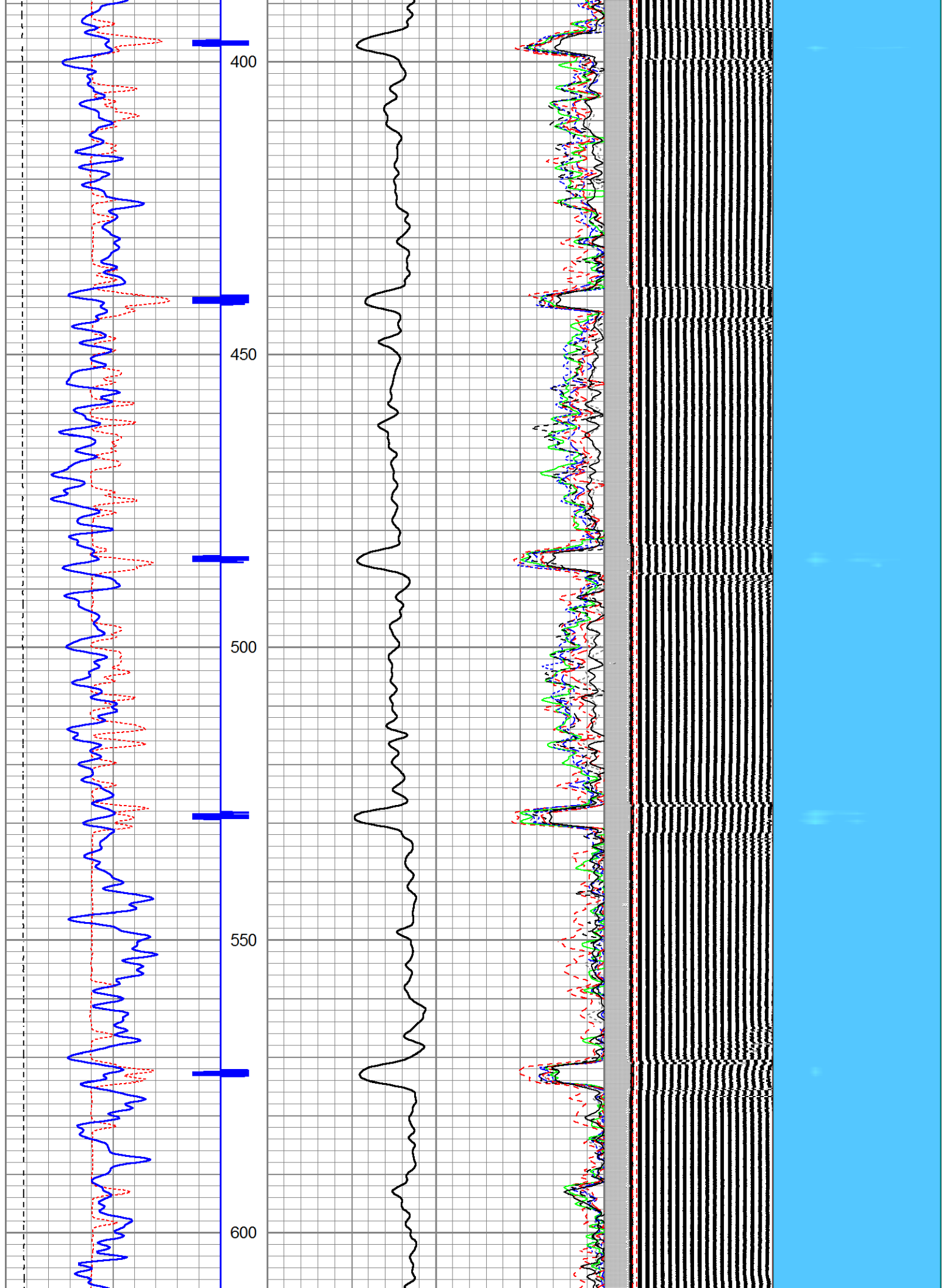
Database File	nrc 23-8.db
Dataset Pathname	pass4
Presentation Format	scbl4_5
Dataset Creation	Tue Jan 28 15:53:44 2020
Charted by	Depth in Feet scaled 1:240

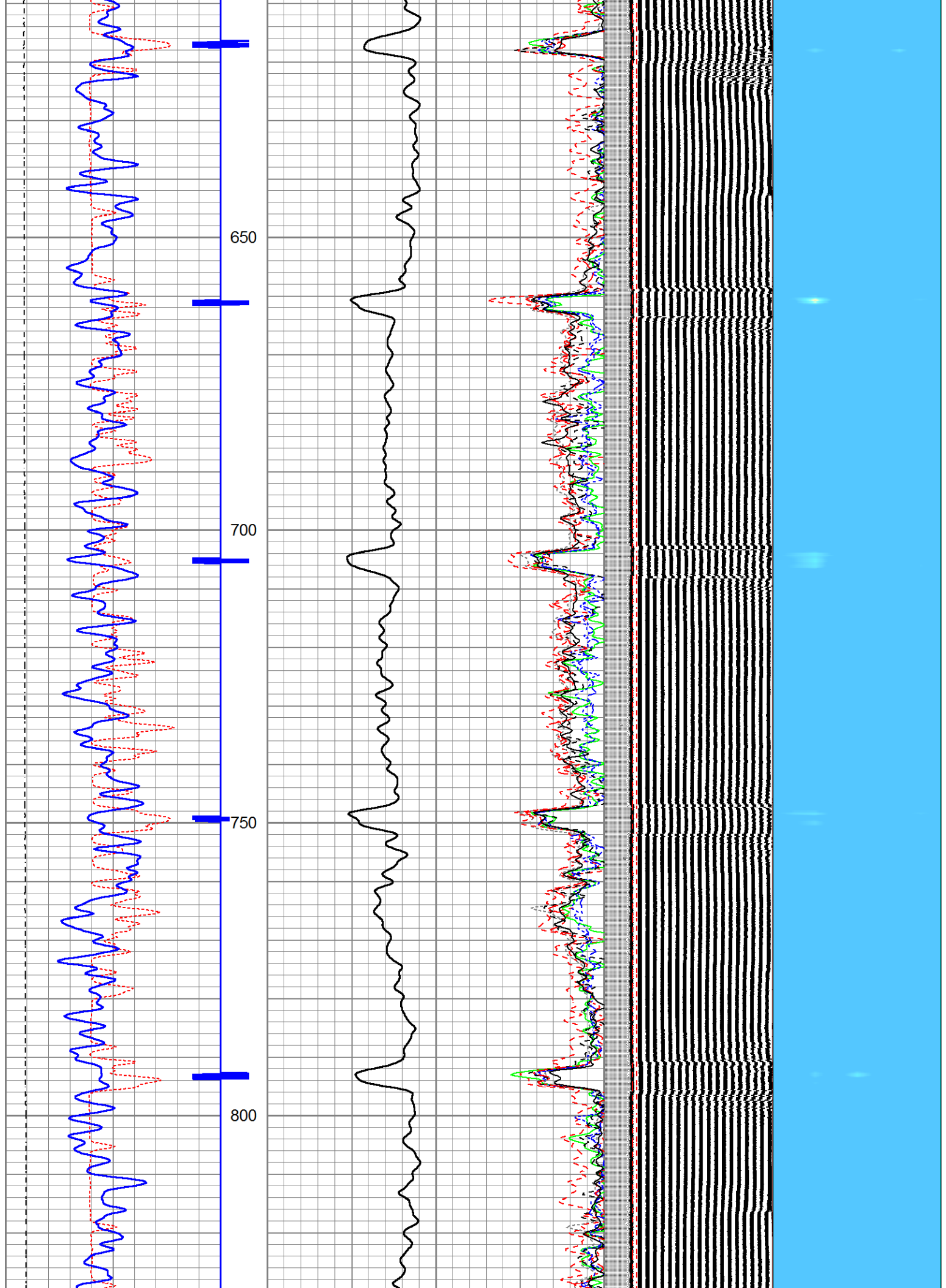
Charted by			Depth in Feet scaled 1:240									
325	TT (usec)	225	0	Amplitude (mV)	100	-5	AMPS2	150	200	VDL (usec)	1200	Cement Map
0	GR (GAPI)	150	Amplified Amplitude			-5	AMPS3	150				
0	LTEN (lb)	3000	0	(mV)	10	-5	AMPS4	150	Free Pipe Section			
		CCL				-5	AMPS5	150				
						-5	AMPS6	150				
						-5	AMPS7	150				
						-5	AMPS8	150				
						-5	AMPS1	150				

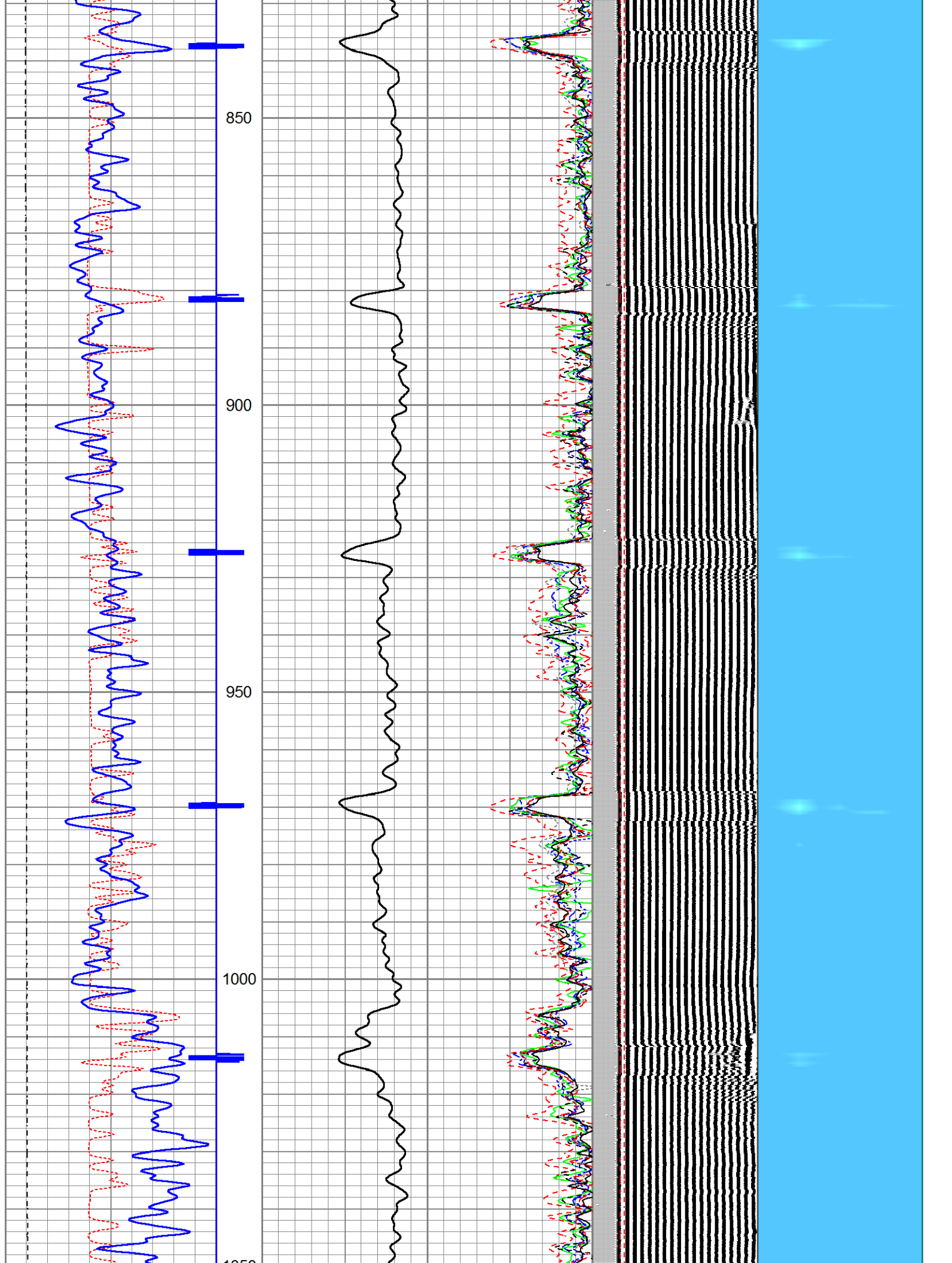




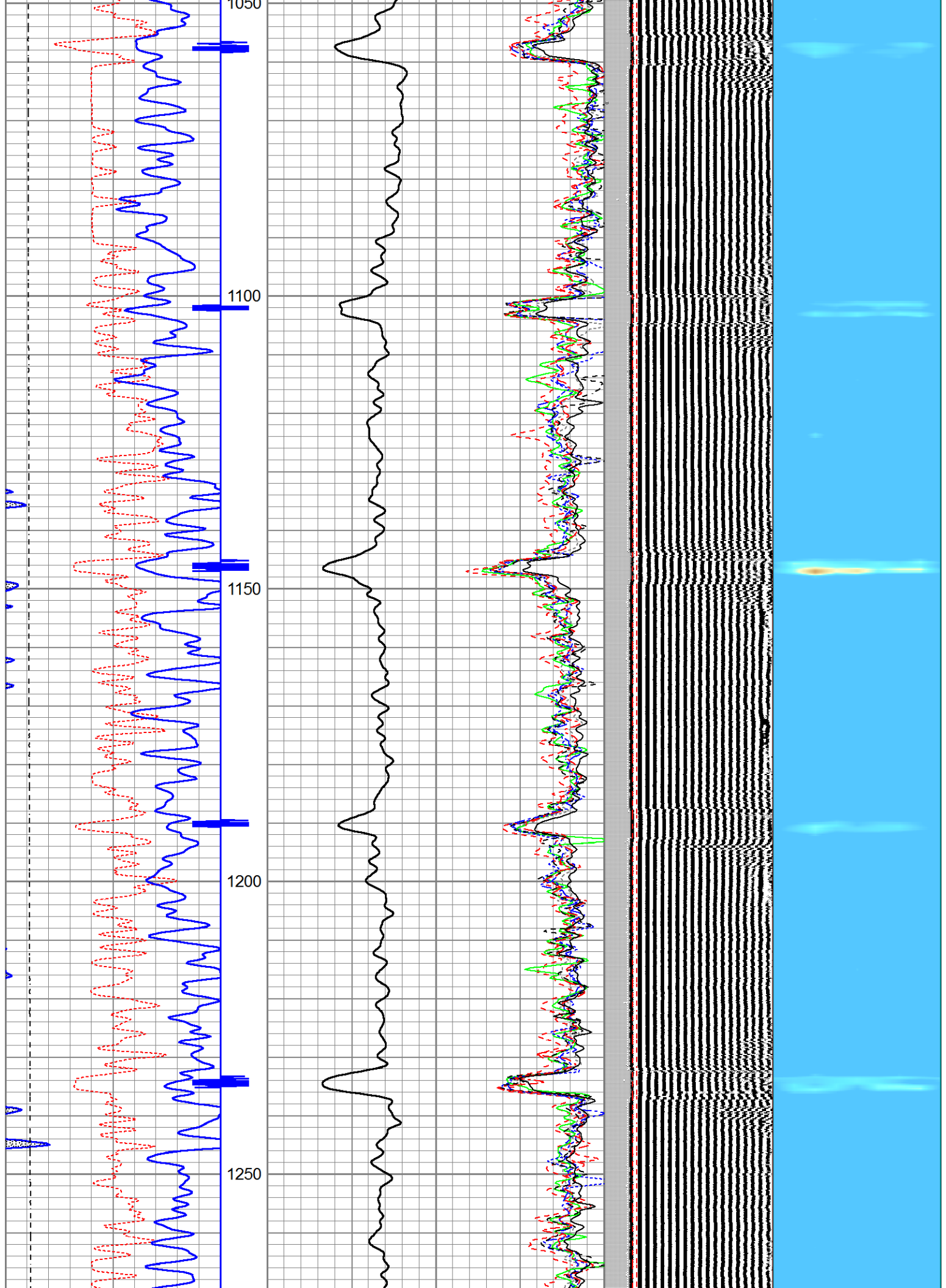




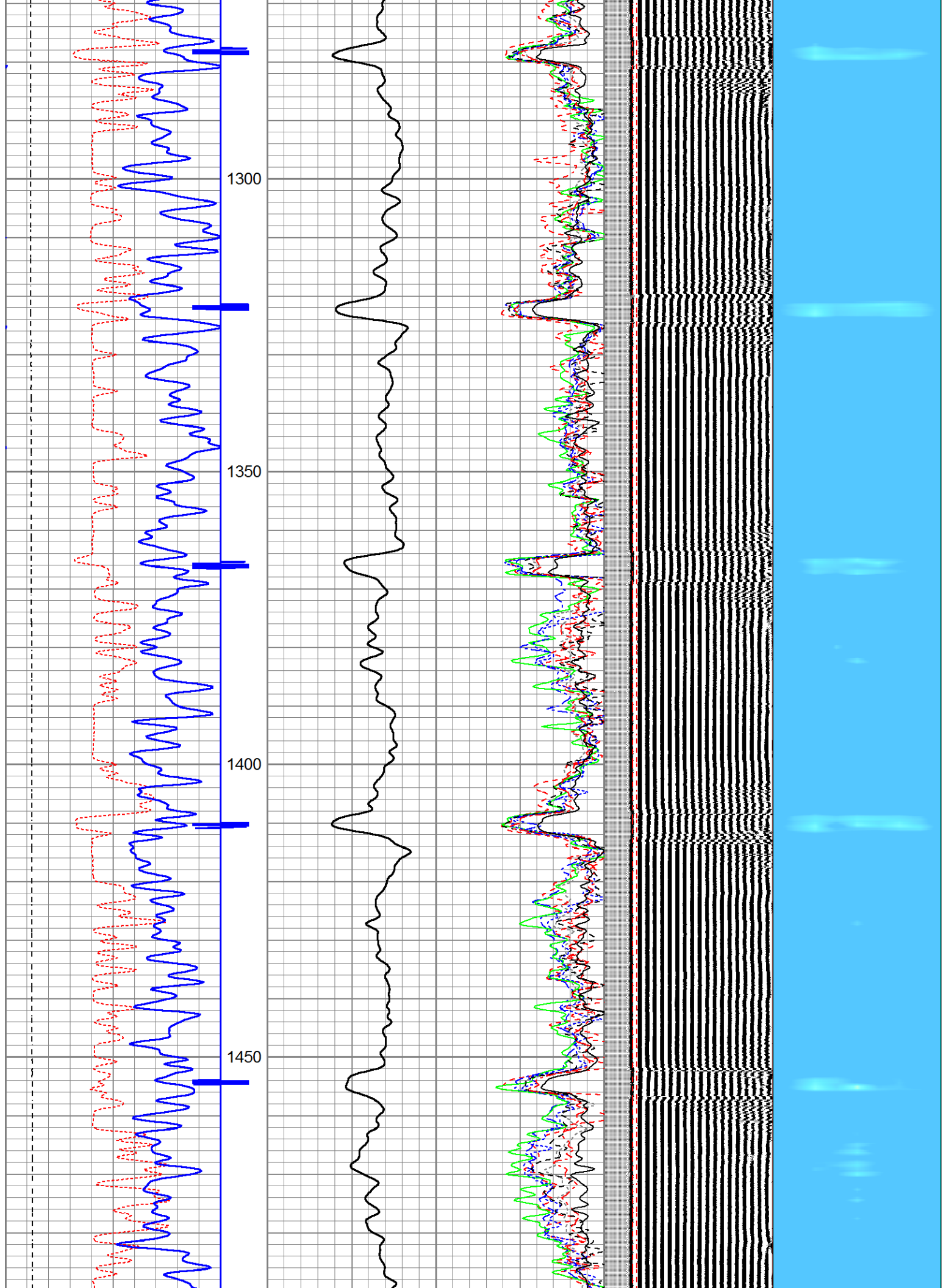




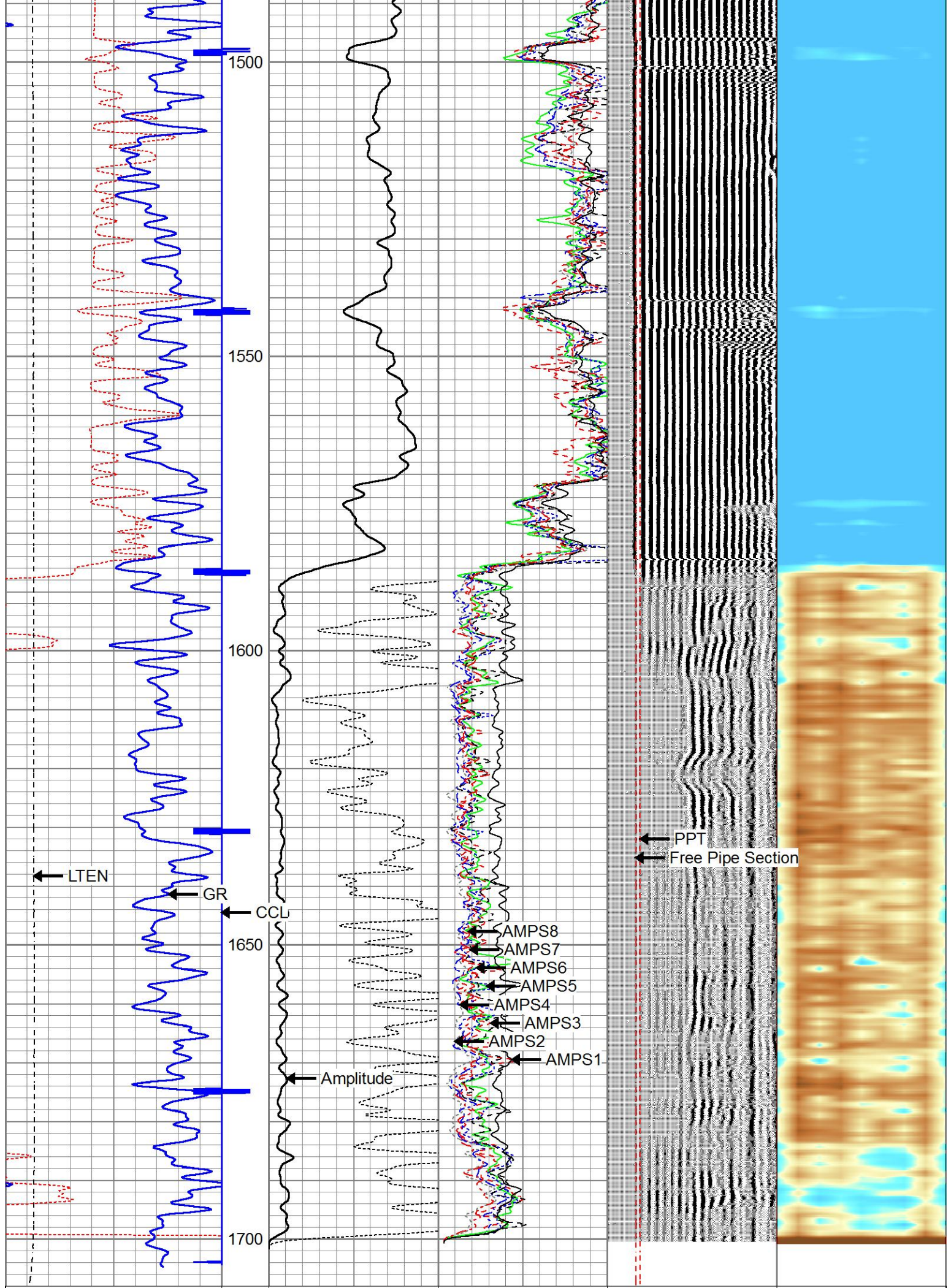













325	TT (usec)	225	0	Amplitude (mV)	100	-5	AMPS2	150	200	VDL (usec)	1200	Cement Map
0	GR (GAPI)	150		Amplified Amplitude		-5	AMPS3	150				
0	LTEN (lb)	3000	0	(mV)	10	-5	AMPS4	150	Free Pipe Section			
						-5	AMPS5	150				
						-5	AMPS6	150				
						-5	AMPS7	150				
						-5	AMPS8	150				
						-5	AMPS1	150				

		Company	ANADARKO PETROLEUM
		Well	NRC 23-8
		Field	WATENBERG
		County	WELD
		State	COLORADO