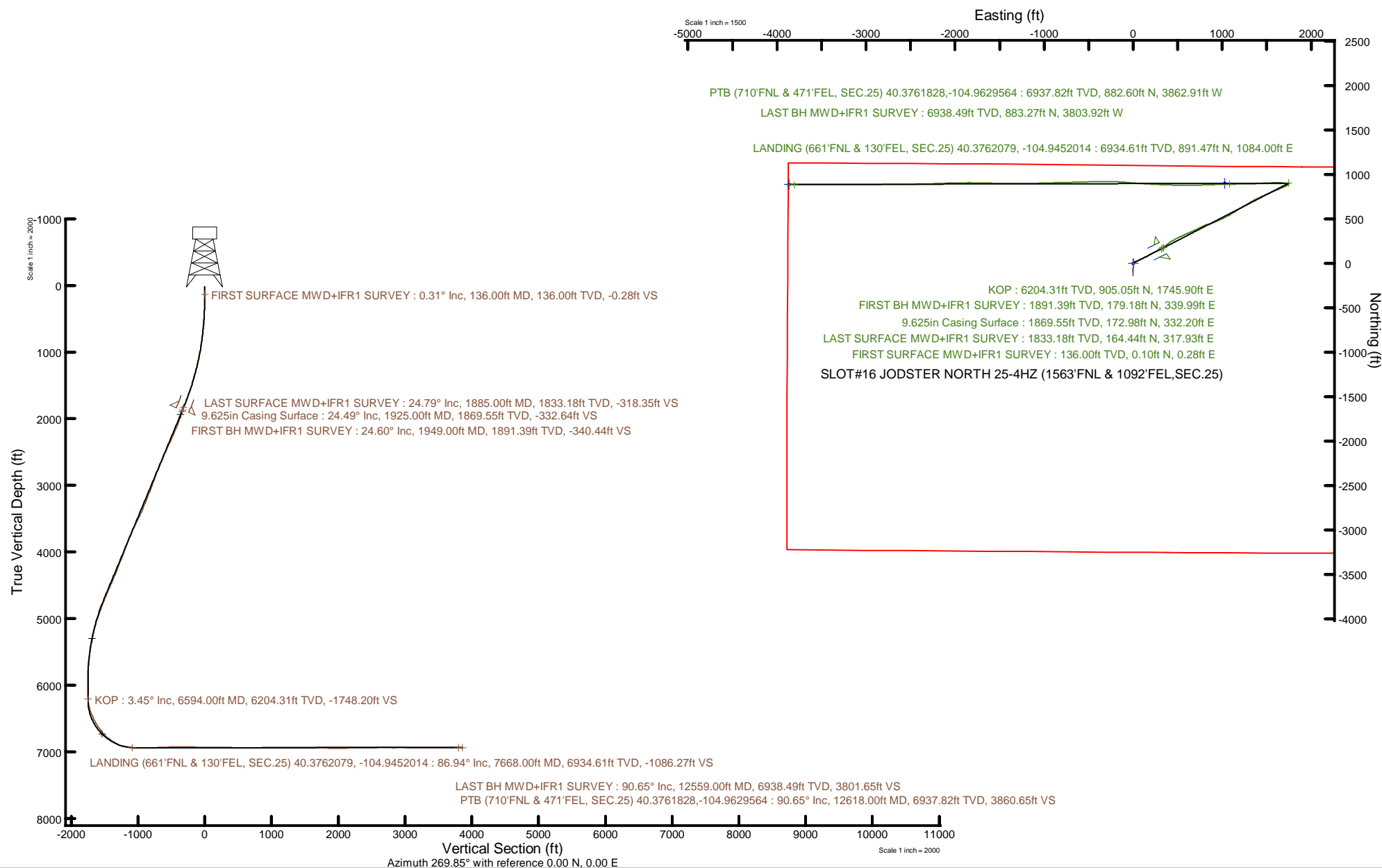


Location:	COLORADO	Slot:	SLOT#16 JODSTER NORTH 25-4HZ (1563FNL & 1092FEL, SEC.25)
Field:	LARIMER COUNTY	Well:	JODSTER NORTH 25-4HZ
Facility:	SEC.25-T5N-R68W	Wellbore:	JODSTER NORTH 25-4HZ PWB

Plot reference wellpath is JODSTER NORTH 25-4HZ PWP Rev-A.0	Grid System: NAD83 / UTM Zone 13 North, US feet
True vertical depths are referenced to PD 564 (26) (RT)	North Reference: True north
Reference wellpath measured depths are referenced to PD 564 (26) (RT)	Scale: True distance
PD 564 (26) (RT) to Mean Sea Level: 4987 feet	Coordinates are in feet referenced to Slot
Mean Sea Level to Mud line (At Slot: SLOT#16 JODSTER NORTH 25-4HZ (1563FNL & 1092FEL, SEC.25): 0 feet	Depths are in feet
Offset wellpath MDs are referenced to each path's default MD datum	Created by: raghyos on 2020-01-27; Database: WA, DEN, Anandarko, Defn



REFERENCE WELLPATH IDENTIFICATION			
Operator	KERR-MCGEE OIL & GAS ONSHORE LP (WA)	Well	JODSTER NORTH 25-4HZ
Field	LARIMER COUNTY	API/Legal	
Facility	SEC.25-T5N-R68W	Wellbore	JODSTER NORTH 25-4HZ AWP
Slot	SLOT#16 JODSTER NORTH 25-4HZ (1563'FNL & 1092'FEL,SEC.25)		

REPORT SETUP INFORMATION			
Projection System	NAD83 / UTM Zone 13 North, US feet	Software System	WellArchitect® 6.0
North Reference	True	User	Ragbyos
Scale	0.999600	Report Generated	1/27/2020 at 4:16:58 PM
Convergence at slot	0.03° East	Database	WA_DEN_Anardarko_Defn

WELLPATH LOCATION						
	Local coordinates		Grid coordinates		Geographic coordinates	
	North[ft]	East[ft]	Easting[US ft]	Northing[US ft]	Latitude	Longitude
Slot Location	637.51	-378.88	1654595.47	14662843.44	40.3737610°	-104.9490920°
Facility Reference Pt			1654974.57	14662206.42	40.3720111°	-104.9477322°
Field Reference Pt			0.00	0.00	0.0000000°	-109.4887439°

WELLPATH DATUM			
Calculation method	Minimum curvature	PD 564 (26') (RT) to Facility Vertical Datum	4887.00ft
Horizontal Reference Pt	Slot	PD 564 (26') (RT) to Mean Sea Level	4887.00ft
Vertical Reference Pt	PD 564 (26') (RT)	PD 564 (26') (RT) to Mud Line at Slot (SLOT#16 JODSTER NORTH 25-4HZ (1563'FNL & 1092'FEL,SEC.25))	4887.00ft
MD Reference Pt	PD 564 (26') (RT)	Section Origin	N 0.00, E 0.00 ft
Field Vertical Reference	Mean Sea Level	Section Azimuth	269.85°

# Actual Wellpath Report

JODSTER NORTH 25-4HZ AWP

Page 2 of 7

REFERENCE WELLPATH IDENTIFICATION				
Operator	KERR-MCGEE OIL & GAS ONSHORE LP (WA)		Well	JODSTER NORTH 25-4HZ
Field	LARIMER COUNTY		API/Legal	
Facility	SEC.25-T5N-R68W		Wellbore	JODSTER NORTH 25-4HZ AWB
Slot	SLOT#16 JODSTER NORTH 25-4HZ (1563'FNL & 1092'FEL,SEC.25)			

WELLPATH DATA (145 stations) † = interpolated, ‡ = extrapolated station												Comments
MD [ft]	Inclination [°]	Azimuth [°]	TVD [ft]	Vert Sect [ft]	North [ft]	East [ft]	Grid East [US ft]	Grid North [US ft]	Latitude	Longitude	DLS ["/100ft]	
0.00†	0.000	69.340	0.00	0.00	0.00	0.00	1654595.47	14662843.44	40.3737610	-104.9490920	0.00	
26.00	0.000	69.340	26.00	0.00	0.00	0.00	1654595.47	14662843.44	40.3737610	-104.9490920	0.00	
136.00	0.310	69.340	136.00	-0.28	0.10	0.28	1654595.74	14662843.55	40.3737613	-104.9490910	0.28	FIRST SURFACE MWD+IFR1 SURVEY
232.00	0.480	37.960	232.00	-0.77	0.51	0.77	1654596.23	14662843.96	40.3737624	-104.9490892	0.28	
327.00	2.590	51.150	326.96	-2.69	2.17	2.69	1654598.15	14662845.62	40.3737670	-104.9490824	2.24	
423.00	3.250	52.460	422.83	-6.55	5.19	6.53	1654601.99	14662848.64	40.3737753	-104.9490686	0.69	
517.00	4.790	53.870	516.60	-11.84	9.13	11.82	1654607.27	14662852.58	40.3737861	-104.9490496	1.64	
612.00	6.110	63.190	611.17	-19.57	13.75	19.53	1654614.98	14662857.20	40.3737987	-104.9490219	1.67	
707.00	6.990	64.070	705.55	-29.29	18.56	29.24	1654624.69	14662862.01	40.3738119	-104.9489870	0.93	
802.00	8.220	62.750	799.71	-40.54	24.20	40.48	1654635.92	14662867.65	40.3738274	-104.9489467	1.31	
897.00	9.670	63.190	893.55	-53.72	30.90	53.64	1654649.07	14662874.37	40.3738458	-104.9488995	1.53	
993.00	11.030	65.470	987.99	-69.29	38.35	69.19	1654664.61	14662881.82	40.3738663	-104.9488437	1.48	
1088.00	13.010	64.510	1080.90	-87.23	46.73	87.11	1654682.52	14662890.20	40.3738893	-104.9487794	2.09	
1183.00	14.370	65.470	1173.20	-107.63	56.23	107.49	1654702.88	14662899.71	40.3739153	-104.9487062	1.45	
1278.00	16.480	62.570	1264.77	-130.35	67.33	130.18	1654725.55	14662910.82	40.3739458	-104.9486248	2.36	
1374.00	17.360	61.690	1356.62	-155.08	80.39	154.87	1654750.23	14662923.90	40.3739817	-104.9485362	0.95	
1469.00	18.330	61.340	1447.05	-180.70	94.28	180.46	1654775.80	14662937.79	40.3740198	-104.9484443	1.03	
1564.00	20.870	62.310	1536.54	-208.83	109.31	208.56	1654803.87	14662952.83	40.3740610	-104.9483435	2.70	
1658.00	21.490	62.570	1624.19	-238.98	125.02	238.66	1654833.96	14662968.55	40.3741042	-104.9482354	0.67	
1754.00	22.630	64.070	1713.16	-271.24	141.20	270.88	1654866.16	14662984.74	40.3741486	-104.9481198	1.32	
1848.00	23.990	63.450	1799.48	-304.64	157.65	304.24	1654899.50	14663001.21	40.3741937	-104.9480001	1.47	
1885.00	24.790	63.800	1833.18	-318.35	164.44	317.93	1654913.17	14663008.00	40.3742124	-104.9479509	2.20	LAST SURFACE MWD+IFR1 SURVEY
1949.00	24.600	48.620	1891.39	-340.44	179.18	339.99	1654935.21	14663022.75	40.3742528	-104.9478718	9.89	FIRST BH MWD+IFR1 SURVEY
2038.00	23.980	50.080	1972.51	-368.28	203.03	367.76	1654962.96	14663046.61	40.3743183	-104.9477721	0.97	
2127.00	23.820	53.840	2053.88	-396.71	225.25	396.14	1654991.32	14663068.83	40.3743793	-104.9476702	1.72	
2216.00	24.610	57.190	2135.05	-426.85	245.89	426.23	1655021.38	14663089.48	40.3744359	-104.9475623	1.78	
2305.00	26.810	62.350	2215.25	-460.27	265.25	459.59	1655054.72	14663108.86	40.3744891	-104.9474425	3.52	
2395.00	27.330	61.890	2295.39	-496.52	284.41	495.79	1655090.90	14663128.02	40.3745417	-104.9473126	0.62	
2484.00	27.090	65.790	2374.54	-533.07	302.34	532.30	1655127.38	14663145.97	40.3745909	-104.9471816	2.02	
2574.00	25.200	66.310	2455.33	-569.35	318.45	568.54	1655163.59	14663162.09	40.3746351	-104.9470515	2.12	
2663.00	25.710	65.840	2535.69	-604.35	333.96	603.50	1655198.53	14663177.62	40.3746777	-104.9469260	0.62	
2752.00	24.000	65.600	2616.45	-638.49	349.34	637.60	1655232.61	14663193.01	40.3747199	-104.9468036	1.92	
2842.00	25.380	66.140	2698.22	-672.84	364.71	671.91	1655266.90	14663208.39	40.3747621	-104.9466805	1.55	
2931.00	22.660	66.760	2779.50	-706.08	379.19	705.12	1655300.08	14663222.89	40.3748018	-104.9465613	3.07	
3021.00	22.880	61.810	2862.50	-737.47	394.30	736.47	1655331.41	14663238.00	40.3748433	-104.9464488	2.14	
3110.00	23.240	62.420	2944.38	-768.33	410.60	767.28	1655362.20	14663254.32	40.3748880	-104.9463382	0.49	
3200.00	22.160	63.590	3027.41	-799.31	426.37	798.22	1655393.12	14663270.10	40.3749313	-104.9462271	1.30	
3289.00	22.280	78.910	3109.87	-830.95	437.09	829.84	1655424.72	14663280.84	40.3749607	-104.9461137	6.49	
3378.00	22.380	74.200	3192.20	-863.83	444.95	862.70	1655457.57	14663288.71	40.3749823	-104.9459957	2.01	
3468.00	23.360	69.000	3275.14	-897.01	456.01	895.85	1655490.69	14663299.79	40.3750127	-104.9458767	2.49	
3557.00	23.980	66.110	3356.65	-930.05	469.66	928.86	1655523.68	14663313.45	40.3750501	-104.9457583	1.48	
3647.00	28.160	64.970	3437.48	-966.08	486.06	964.84	1655559.64	14663329.86	40.3750951	-104.9456291	4.68	
3736.00	28.990	63.600	3515.64	-1004.47	504.53	1003.19	1655597.96	14663348.35	40.3751458	-104.9454915	1.19	
3826.00	28.790	63.560	3594.44	-1043.46	523.88	1042.13	1655636.88	14663367.71	40.3751989	-104.9453517	0.22	
3915.00	28.280	61.790	3672.63	-1081.28	543.39	1079.90	1655674.62	14663387.24	40.3752525	-104.9452162	1.11	

# Actual Wellpath Report

JODSTER NORTH 25-4HZ AWP

Page 3 of 7

REFERENCE WELLPATH IDENTIFICATION				
Operator	KERR-MCGEE OIL & GAS ONSHORE LP (WA)		Well	JODSTER NORTH 25-4HZ
Field	LARIMER COUNTY		API/Legal	
Facility	SEC.25-T5N-R68W		Wellbore	JODSTER NORTH 25-4HZ AWP
Slot	SLOT#16 JODSTER NORTH 25-4HZ (1563'FNL & 1092'FEL, SEC.25)			

WELLPATH DATA (145 stations) † = interpolated, ‡ = extrapolated station												
MD [ft]	Inclination [°]	Azimuth [°]	TVD [ft]	Vert Sect [ft]	North [ft]	East [ft]	Grid East [US ft]	Grid North [US ft]	Latitude	Longitude	DLS [°/100ft]	Comments
4005.00	25.000	58.600	3753.07	-1116.36	563.38	1114.93	1655709.62	14663407.24	40.3753074	-104.9450904	3.97	
4095.00	25.350	55.500	3834.52	-1148.53	584.20	1147.04	1655741.71	14663428.07	40.3753645	-104.9449752	1.52	
4184.00	25.110	59.260	3915.04	-1180.52	604.65	1178.98	1655773.62	14663448.53	40.3754206	-104.9448606	1.82	
4273.00	23.060	57.060	3996.28	-1211.43	623.78	1209.84	1655804.46	14663467.67	40.3754731	-104.9447498	2.51	
4363.00	22.840	59.370	4079.16	-1241.30	642.27	1239.66	1655834.26	14663486.17	40.3755239	-104.9446427	1.03	
4452.00	25.240	59.670	4160.44	-1272.59	660.65	1270.91	1655865.48	14663504.56	40.3755743	-104.9445306	2.70	
4542.00	24.280	59.390	4242.16	-1305.13	679.76	1303.40	1655897.95	14663523.68	40.3756268	-104.9444140	1.07	
4631.00	24.730	59.880	4323.15	-1337.03	698.42	1335.25	1655929.78	14663542.36	40.3756780	-104.9442997	0.55	
4721.00	25.110	62.700	4404.77	-1370.33	716.63	1368.50	1655963.01	14663560.57	40.3757280	-104.9441803	1.39	
4811.00	27.210	65.440	4485.55	-1406.06	733.94	1404.19	1655998.67	14663577.90	40.3757755	-104.9440522	2.69	
4900.00	25.150	64.470	4565.41	-1441.68	750.55	1439.77	1656034.22	14663594.52	40.3758211	-104.9439245	2.36	
4990.00	24.790	65.480	4647.00	-1476.14	766.63	1474.19	1656068.63	14663610.61	40.3758652	-104.9438010	0.62	
5079.00	22.790	64.970	4728.44	-1508.78	781.66	1506.79	1656101.20	14663625.66	40.3759065	-104.9436840	2.26	
5169.00	22.760	68.180	4811.42	-1540.77	795.51	1538.75	1656133.14	14663639.52	40.3759445	-104.9435693	1.38	
5258.00	22.590	67.390	4893.54	-1572.57	808.48	1570.51	1656164.88	14663652.50	40.3759801	-104.9434553	0.39	
5347.00	19.350	68.000	4976.64	-1602.06	820.58	1599.97	1656194.32	14663664.61	40.3760133	-104.9433495	3.65	
5462.00	16.780	66.390	5085.96	-1634.97	834.37	1632.85	1656227.18	14663678.42	40.3760511	-104.9432315	2.28	
5552.00	15.280	65.060	5172.46	-1657.66	844.57	1655.51	1656249.82	14663688.63	40.3760791	-104.9431502	1.72	
5641.00	13.100	64.760	5258.74	-1677.44	853.82	1675.27	1656269.57	14663697.88	40.3761045	-104.9430793	2.45	
5731.00	11.620	66.700	5346.65	-1695.01	861.75	1692.82	1656287.11	14663705.83	40.3761263	-104.9430163	1.71	
5820.00	10.320	68.750	5434.02	-1710.69	868.19	1708.48	1656302.76	14663712.27	40.3761439	-104.9429601	1.52	
5909.00	9.670	60.580	5521.67	-1724.65	874.75	1722.42	1656316.69	14663718.83	40.3761619	-104.9429100	1.75	
5999.00	8.300	52.450	5610.57	-1736.40	882.42	1734.16	1656328.42	14663726.51	40.3761830	-104.9428679	2.07	
6088.00	5.540	46.530	5698.92	-1744.63	889.29	1742.37	1656336.63	14663733.38	40.3762019	-104.9428384	3.20	
6178.00	4.130	36.270	5788.59	-1749.72	894.90	1747.44	1656341.69	14663738.99	40.3762172	-104.9428202	1.83	
6267.00	2.330	21.290	5877.45	-1752.28	899.17	1750.00	1656344.24	14663743.26	40.3762290	-104.9428111	2.22	
6357.00	1.570	354.580	5967.40	-1752.84	902.10	1750.54	1656344.79	14663746.19	40.3762370	-104.9428091	1.29	
6446.00	1.170	314.890	6056.38	-1752.08	903.95	1749.78	1656344.03	14663748.04	40.3762421	-104.9428118	1.13	
6535.00	1.200	288.720	6145.36	-1750.56	904.89	1748.26	1656342.50	14663748.98	40.3762447	-104.9428173	0.60	
6594.00†	3.453	268.600	6204.31	-1748.20	905.05	1745.90	1656340.14	14663749.13	40.3762451	-104.9428258	4.00	KOP
6625.00	4.680	265.940	6235.23	-1746.00	904.94	1743.70	1656337.95	14663749.02	40.3762448	-104.9428336	4.00	
6714.00	14.580	265.660	6322.86	-1731.17	903.83	1728.87	1656323.12	14663747.91	40.3762418	-104.9428869	11.12	
6804.00	20.280	276.650	6408.72	-1704.36	904.78	1702.06	1656296.32	14663748.84	40.3762444	-104.9429831	7.29	
6893.00	24.550	272.710	6490.98	-1670.56	907.44	1668.25	1656262.52	14663751.48	40.3762517	-104.9431045	5.08	
6983.00	29.300	270.130	6571.20	-1629.84	908.38	1627.53	1656221.82	14663752.39	40.3762543	-104.9432506	5.43	
7072.00	35.080	269.230	6646.49	-1582.45	908.08	1580.14	1656174.44	14663752.07	40.3762535	-104.9434207	6.52	
7162.00	41.770	267.540	6716.96	-1526.57	906.45	1524.26	1656118.59	14663750.40	40.3762490	-104.9436212	7.52	
7251.00	49.600	265.990	6779.09	-1463.04	902.80	1460.74	1656055.10	14663746.72	40.3762390	-104.9438492	8.89	
7341.00	56.060	266.090	6833.44	-1391.52	897.85	1389.23	1655983.62	14663741.73	40.3762254	-104.9441059	7.18	
7431.00	61.720	268.870	6879.93	-1314.57	894.52	1312.29	1655906.72	14663738.36	40.3762163	-104.9443820	6.82	
7520.00	73.670	269.680	6913.65	-1232.38	893.50	1230.11	1655824.56	14663737.30	40.3762135	-104.9446770	13.45	
7609.00	84.710	269.060	6930.31	-1145.10	892.54	1142.83	1655737.32	14663736.28	40.3762109	-104.9449903	12.42	
7668.00†	86.939	268.863	6934.61	-1086.27	891.47	1084.00	1655678.51	14663735.18	40.3762079	-104.9452014	3.79	LANDING (661'FNL & 130'FEL, SEC.25) 40.3762079, -104.9452014
7699.00	88.110	268.760	6935.95	-1055.30	890.83	1053.03	1655647.56	14663734.52	40.3762062	-104.9453125	3.79	
7788.00	88.140	268.480	6938.86	-966.37	888.68	964.11	1655558.67	14663732.33	40.3762003	-104.9456317	0.32	

REFERENCE WELLPATH IDENTIFICATION				
Operator	KERR-MCGEE OIL & GAS ONSHORE LP (WA)		Well	JODSTER NORTH 25-4HZ
Field	LARIMER COUNTY		API/Legal	
Facility	SEC.25-T5N-R68W		Wellbore	JODSTER NORTH 25-4HZ AWP
Slot	SLOT#16 JODSTER NORTH 25-4HZ (1563'FNL & 1092'FEL,SEC.25)			

WELLPATH DATA (145 stations)												
MD [ft]	Inclination [°]	Azimuth [°]	TVD [ft]	Vert Sect [ft]	North [ft]	East [ft]	Grid East [US ft]	Grid North [US ft]	Latitude	Longitude	DLS [°/100ft]	Comments
7878.00	90.130	267.670	6940.22	-876.43	885.66	874.17	1655468.78	14663729.25	40.3761920	-104.9459545	2.39	
7967.00	92.710	268.780	6938.01	-787.50	882.91	785.25	1655379.89	14663726.45	40.3761845	-104.9462736	3.16	
8056.00	91.430	269.410	6934.80	-698.57	881.50	696.32	1655291.00	14663724.99	40.3761806	-104.9465928	1.60	
8146.00	92.830	269.580	6931.45	-608.63	880.71	606.39	1655201.11	14663724.15	40.3761784	-104.9469156	1.57	
8235.00	92.210	270.710	6927.54	-519.72	880.93	517.48	1655112.23	14663724.32	40.3761791	-104.9472347	1.45	
8325.00	89.930	272.040	6925.86	-429.78	883.09	427.53	1655022.32	14663726.43	40.3761850	-104.9475575	2.93	
8414.00	90.410	271.690	6925.60	-340.83	885.99	338.58	1654933.40	14663729.27	40.3761930	-104.9478768	0.67	
8504.00	88.700	273.290	6926.29	-250.94	889.90	248.67	1654843.53	14663733.13	40.3762037	-104.9481995	2.60	
8593.00	89.050	273.530	6928.04	-162.13	895.19	159.85	1654754.73	14663738.37	40.3762182	-104.9485183	0.48	
8683.00	89.040	273.800	6929.54	-72.34	900.94	70.04	1654664.96	14663744.07	40.3762340	-104.9488406	0.30	
8772.00	89.790	274.240	6930.45	16.42	907.18	-18.73	1654576.22	14663750.25	40.3762511	-104.9491592	0.98	
8862.00	89.870	274.570	6930.72	106.14	914.10	-108.47	1654486.52	14663757.11	40.3762701	-104.9494813	0.38	
8951.00	89.670	272.430	6931.08	194.95	919.53	-197.29	1654397.72	14663762.49	40.3762850	-104.9498001	2.41	
9040.00	88.550	270.290	6932.46	283.90	921.64	-286.25	1654308.80	14663764.55	40.3762908	-104.9501194	2.71	
9130.00	88.730	268.430	6934.59	373.87	920.64	-376.22	1654218.87	14663763.49	40.3762881	-104.9504423	2.08	
9219.00	88.150	268.900	6937.02	462.82	918.56	-465.16	1654129.97	14663761.37	40.3762824	-104.9507615	0.84	
9309.00	89.620	268.230	6938.77	552.77	916.31	-555.11	1654040.05	14663759.07	40.3762762	-104.9510844	1.79	
9399.00	90.130	268.110	6938.96	642.73	913.44	-645.06	1653950.14	14663756.14	40.3762683	-104.9514072	0.58	
9488.00	90.870	268.670	6938.19	731.70	910.93	-734.02	1653861.21	14663753.59	40.3762614	-104.9517265	1.04	
9578.00	91.820	268.700	6936.08	821.66	908.87	-823.98	1653771.30	14663751.47	40.3762557	-104.9520493	1.06	
9667.00	90.610	268.450	6934.19	910.61	906.66	-912.93	1653682.39	14663749.21	40.3762496	-104.9523686	1.39	
9756.00	91.080	268.480	6932.88	999.58	904.27	-1001.88	1653593.46	14663746.78	40.3762431	-104.9526879	0.53	
9846.00	89.270	268.650	6932.60	1089.55	902.02	-1091.85	1653503.53	14663744.47	40.3762369	-104.9530108	2.02	
9935.00	89.950	269.720	6933.21	1178.54	900.75	-1180.84	1653414.58	14663743.16	40.3762334	-104.9533302	1.42	
10025.00	90.920	269.280	6932.52	1268.53	899.97	-1270.83	1653324.63	14663742.32	40.3762312	-104.9536532	1.18	
10114.00	90.100	269.550	6931.73	1357.53	899.06	-1359.82	1653235.67	14663741.36	40.3762287	-104.9539726	0.97	
10204.00	90.870	270.610	6930.97	1447.52	899.19	-1449.82	1653145.71	14663741.43	40.3762291	-104.9542956	1.46	
10293.00	88.790	271.820	6931.23	1536.49	901.07	-1538.79	1653056.78	14663743.27	40.3762342	-104.9546149	2.70	
10382.00	87.790	271.400	6933.89	1625.41	903.57	-1627.71	1652967.89	14663745.72	40.3762411	-104.9549341	1.22	
10472.00	87.420	271.560	6937.65	1715.29	905.89	-1717.61	1652878.03	14663747.99	40.3762474	-104.9552567	0.45	
10562.00	88.440	270.420	6940.90	1805.21	907.45	-1807.53	1652788.14	14663749.49	40.3762517	-104.9555794	1.70	
10651.00	87.990	269.380	6943.67	1894.17	907.29	-1896.49	1652699.22	14663749.28	40.3762512	-104.9558987	1.27	
10740.00	90.550	268.770	6944.81	1983.14	905.86	-1985.46	1652610.28	14663747.79	40.3762473	-104.9562181	2.96	
10829.00	91.580	268.030	6943.15	2072.10	903.37	-2074.41	1652521.37	14663745.26	40.3762404	-104.9565373	1.42	
10919.00	90.720	267.760	6941.35	2162.03	900.07	-2164.33	1652431.49	14663741.90	40.3762313	-104.9568600	1.00	
11009.00	91.980	268.120	6939.23	2251.95	896.83	-2254.24	1652341.61	14663738.62	40.3762224	-104.9571827	1.46	
11098.00	90.920	268.880	6936.97	2340.89	894.50	-2343.18	1652252.71	14663736.24	40.3762160	-104.9575020	1.47	
11188.00	89.920	268.950	6936.31	2430.88	892.80	-2433.16	1652162.77	14663734.48	40.3762113	-104.9578249	1.11	
11277.00	90.450	269.210	6936.03	2519.87	891.37	-2522.15	1652073.82	14663733.01	40.3762074	-104.9581443	0.66	
11366.00	91.730	269.350	6934.33	2608.85	890.25	-2611.12	1651984.88	14663731.84	40.3762043	-104.9584636	1.45	
11455.00	89.410	269.530	6933.45	2697.83	889.38	-2700.11	1651895.93	14663730.92	40.3762019	-104.9587830	2.61	
11545.00	88.810	268.870	6934.85	2787.82	888.13	-2790.09	1651805.99	14663729.61	40.3761984	-104.9591060	0.99	
11634.00	91.270	269.740	6934.78	2876.80	887.05	-2879.07	1651717.04	14663728.48	40.3761954	-104.9594253	2.93	
11724.00	89.120	269.140	6934.48	2966.80	886.17	-2969.06	1651627.08	14663727.55	40.3761930	-104.9597483	2.48	
11813.00	88.840	269.190	6936.06	3055.78	884.87	-3058.04	1651538.15	14663726.20	40.3761894	-104.9600677	0.32	

TARGETS								
Name	TVD [ft]	North [ft]	East [ft]	Grid East [US ft]	Grid North [US ft]	Latitude	Longitude	Shape
SEC.25-T5N-R68W	0.00	-637.50	378.89	1654974.57	14662206.42	40.3720111	-104.9477322	polygon
	2D Polygon: dimensions not calculated							
SEC.29-T5N-R67W	0.00	-637.50	378.88	1654974.56	14662206.42	40.3720111	-104.9477322	polygon
	2D Polygon: dimensions not calculated							
SEC.30-T5N-R67W	0.00	-637.50	378.88	1654974.56	14662206.42	40.3720111	-104.9477322	polygon
	2D Polygon: dimensions not calculated							
JODSTER NORTH 25-4HZ BHL REV-1 (704'FNL & 470'FWL,SEC.25)	6931.00	888.13	-3863.62	1650732.88	14663728.99	40.3761980	-104.9629590	point
JODSTER NORTH 25-4HZ HEEL REV-1 (652'FNL & 75'FEL,SEC.25)	6940.00	900.60	1028.94	1655623.48	14663744.27	40.3762330	-104.9453990	point
JODSTER NORTH 25-4HZ LANDBOX	6940.00	0.00	0.00	1654595.47	14662843.44	40.3737610	-104.9490920	polygon
	2D Polygon: dimensions not calculated							

REFERENCE WELLPATH IDENTIFICATION				
Operator	KERR-MCGEE OIL & GAS ONSHORE LP (WA)		Well	JODSTER NORTH 25-4HZ
Field	LARIMER COUNTY		API/Legal	
Facility	SEC.25-T5N-R68W		Wellbore	JODSTER NORTH 25-4HZ AWB
Slot	SLOT#16 JODSTER NORTH 25-4HZ (1563'FNL & 1092'FEL,SEC.25)			

WELLPATH COMPOSITION - Ref Wellbore: JODSTER NORTH 25-4HZ AWB      Ref Wellpath: JODSTER NORTH 25-4HZ AWP				
Start MD [ft]	End MD [ft]	Positional Uncertainty Model	Log Name/Comment	Wellbore
26.00	1885.00	Custom APC_ISCWSA REV 2 MWD+IFR1 (approximation)	Custom APC ISCWSA Rev-2 MWD+IFR1 <136 - 1885 >	JODSTER NORTH 25-4HZ AWB
1885.00	12618.00	Custom APC_ISCWSA REV 2 MWD+IFR1+SC (approximation)	BH Custom APC ISCWSA Rev-2 MWD+IFR1+SC <1949 - 12559 >	JODSTER NORTH 25-4HZ AWB

11/15/2019

1/6/2020

REFERENCE WELLPATH IDENTIFICATION			
Operator	KERR-MCGEE OIL & GAS ONSHORE LP (WA)	Well	JODSTER NORTH 25-4HZ
Field	LARIMER COUNTY	API/Legal	
Facility	SEC.25-T5N-R68W	Wellbore	JODSTER NORTH 25-4HZ AWB
Slot	SLOT#16 JODSTER NORTH 25-4HZ (1563'FNL & 1092'FEL,SEC.25)		

WELLPATH COMMENTS				
MD [ft]	Inclination [°]	Azimuth [°]	TVD [ft]	Comment
136.00	0.310	69.340	136.00	FIRST SURFACE MWD+IFR1 SURVEY
1885.00	24.790	63.800	1833.18	LAST SURFACE MWD+IFR1 SURVEY
1949.00	24.600	48.620	1891.39	FIRST BH MWD+IFR1 SURVEY
6594.00	3.453	268.600	6204.31	KOP
7668.00	86.939	268.863	6934.61	LANDING (661'FNL & 130'FEL, SEC.25) 40.3762079, -104.9452014
12559.00	90.650	269.350	6938.49	LAST BH MWD+IFR1 SURVEY
12618.00	90.650	269.350	6937.82	PTB (710'FNL & 471'FEL, SEC.25) 40.3761828,-104.9629564