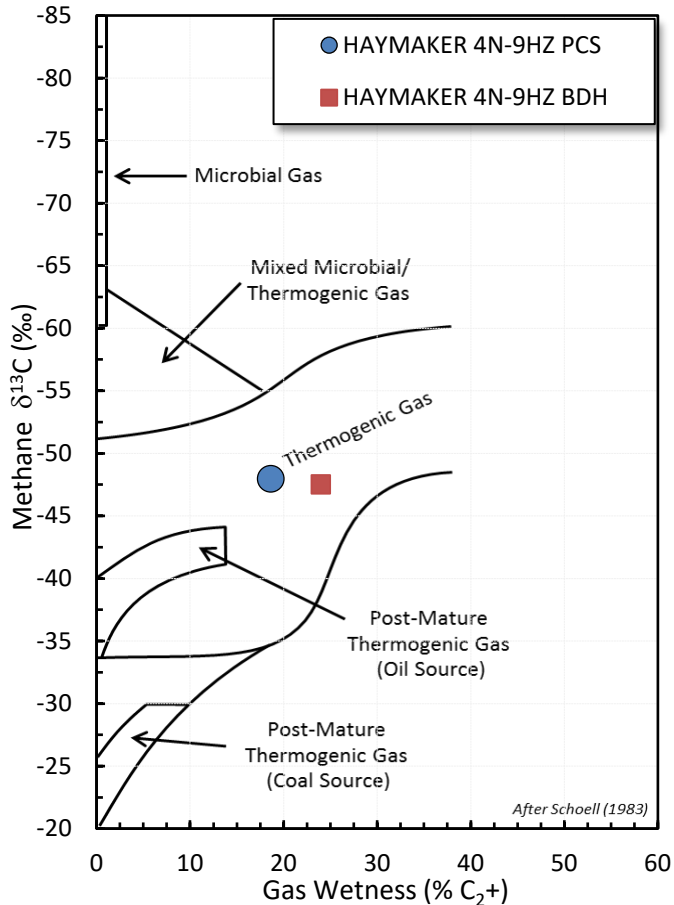
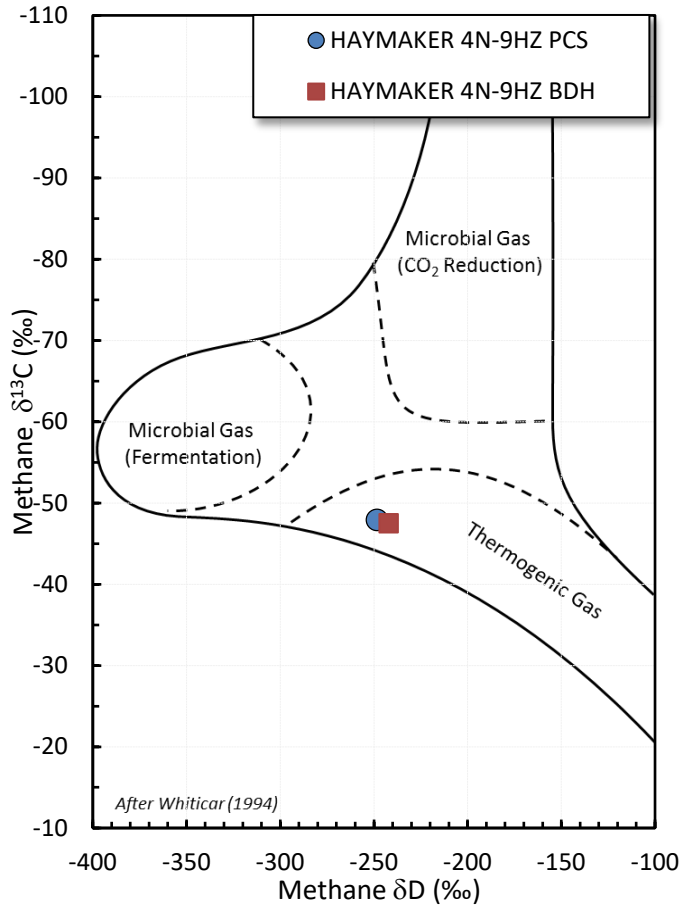


# Stable Isotope Interpretive Plots

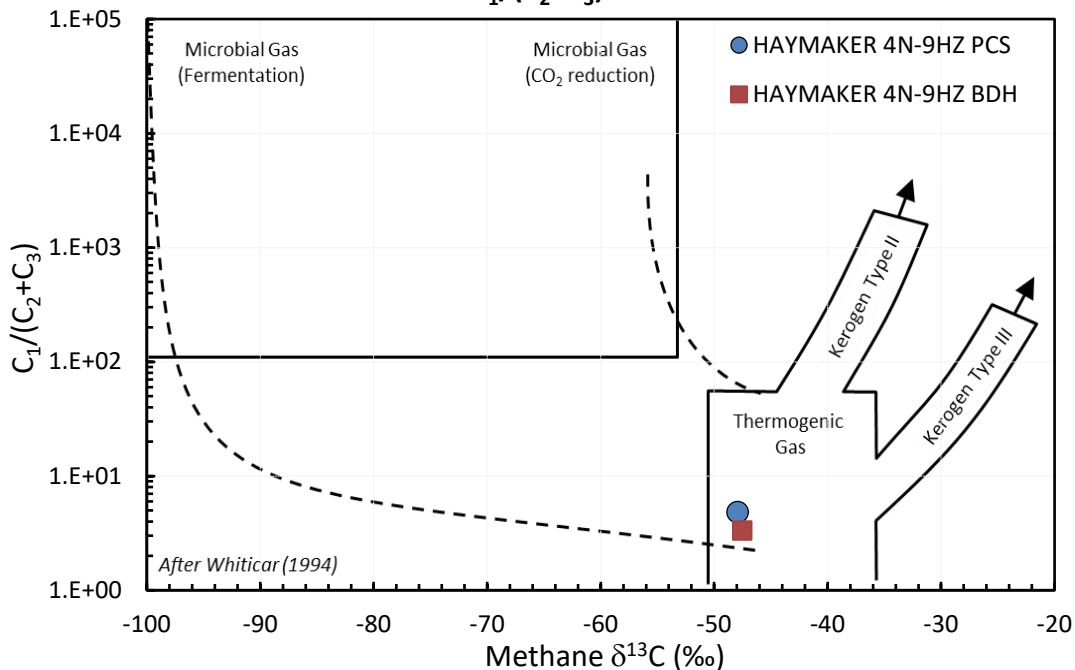
## Methane vs Gas Wetness Genetic Classification

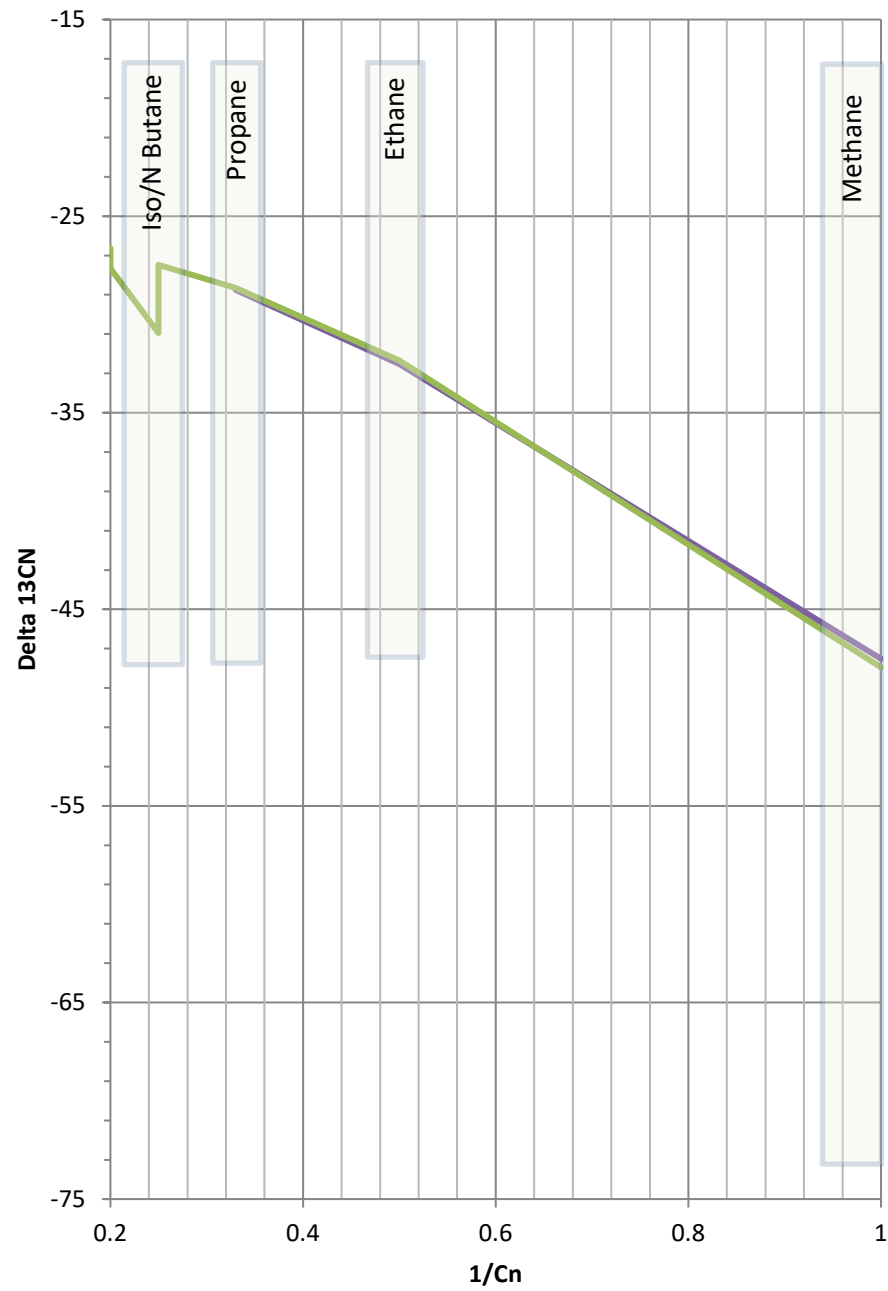


## Methane $\delta^{13}\text{C}$ vs $\delta\text{D}$ Genetic Classification Plot



## Methane $\delta^{13}\text{C}$ vs $\text{C}_1/(\text{C}_2+\text{C}_3)$ Genetic Classification Plot





HAYMAKER 4N-9HZ BDH  
HAYMAKER 4N-9HZ PCS