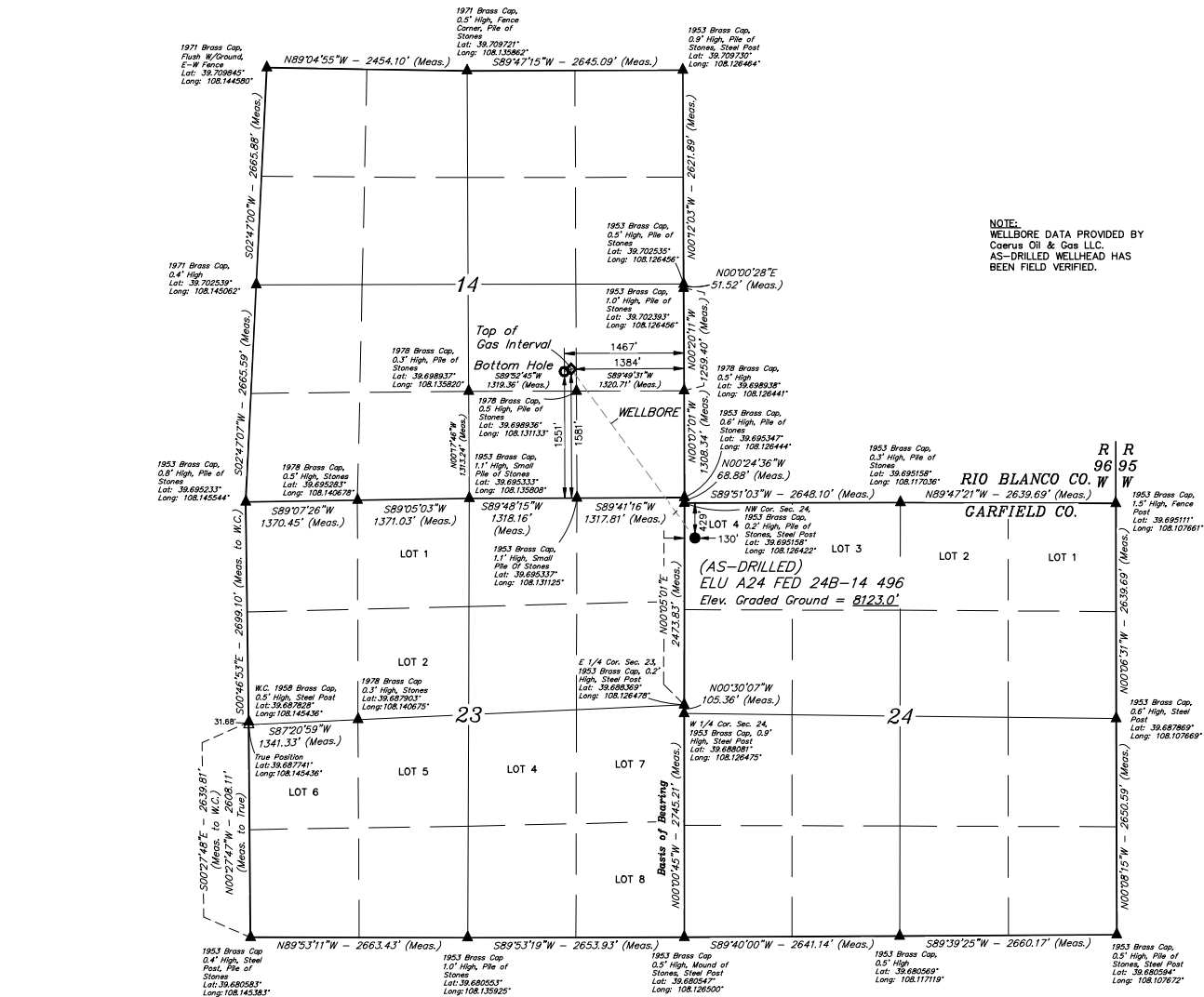


- LEGEND:**
- = SURFACE LOCATION.
 - = TOP OF GAS INTERVAL.
 - = BOTTOM HOLE.
 - ▲ = SECTION CORNERS LOCATED. (NAD 83)
 - △ = SECTION CORNERS RE-ESTABLISHED. (Not Set on Ground.) (NAD 83)

NOTE:
Distances referenced on plat to section lines are perpendicular.

NOTE:
WELLBORE DATA PROVIDED BY
Caeus Oil & Gas LLC.
AS-DRILLED WELLHEAD HAS
BEEN FIELD VERIFIED.



PDOP = 1.7

NAD 83 (SURFACE LOCATION)	NAD 83 (TOP OF GAS INTERVAL)	NAD 83 (BOTTOM HOLE)
LATITUDE = 39°41'38.33" (39.69381)	LATITUDE = 39°41'38.83" (39.69676)	LATITUDE = 39°41'38.54" (39.69593)
LONGITUDE = 108°07'33.55" (108.12586)	LONGITUDE = 108°07'32.50" (108.13160)	LONGITUDE = 108°07'33.97" (108.13167)
NAD 27 (SURFACE LOCATION)	NAD 27 (TOP OF GAS INTERVAL)	NAD 27 (BOTTOM HOLE)
LATITUDE = 39°41'38.42" (39.69405)	LATITUDE = 39°41'38.82" (39.69701)	LATITUDE = 39°41'38.83" (39.69618)
LONGITUDE = 108°07'31.26" (108.12535)	LONGITUDE = 108°07'30.61" (108.13075)	LONGITUDE = 108°07'31.68" (108.13102)
UTM NAD 27 (ZONE 12)	UTM NAD 27 (ZONE 12)	UTM NAD 27 (ZONE 12)
N: 1442587.85 E: 244933.16	N: 1442611.53 E: 244752.59	N: 1442586.11 E: 244759.03

BASIS OF BEARINGS
BEARINGS ARE BASED ON THE ASSUMPTION THAT THE WEST LINE OF THE SOUTHWEST 1/4 OF SECTION 21 BEARS N00°00'55"W. MONUMENTS DESCRIBED HEREON.

BASIS OF ELEVATION
BENCH MARK 0750 LOCATED IN THE NW 1/4 OF SECTION 12, T4S, R96W, 6th P.M., TAKEN FROM THE BULL FORK QUADRICANGLE, COLORADO, 7.5 MINUTE SERIES, TOPOGRAPHIC, 1:62,500, FILED BY THE UNITED STATES DEPARTMENT OF THE INTERIOR, GEOLOGICAL SURVEY. SAID ELEVATION IS NORMED TO BEING 635 FEET.



UELS, LLC
Corporate Office • 85 South 200 East
Vernal, UT 84078 • (435) 789-1017



CERTIFICATE

THIS IS TO CERTIFY THAT THE ABOVE PLAT WAS PREPARED BY ME OR UNDER MY SUPERVISION AND THAT THE LOCATION HAS BEEN SET BY ME OR UNDER MY SUPERVISION ON THE PLAT AND THAT THE SAME ARE TRUE TO THE BEST OF MY KNOWLEDGE AND BELIEF.

REGISTERED PROFESSIONAL SURVEYOR
STATE OF COLORADO

Caeus Oil & Gas LLC

(AS-DRILLED) ELU A24 FED 24B-14 496
LOT 4, SECTION 24, T4S, R96W, 6th P.M.
GARFIELD COUNTY, COLORADO

SURVEYED BY	JOHN FLOYD, M.P.	02-18-20	SCALE
DRAWN BY	T.L.C.	02-20-20	1" = 1000'
AS-DRILLED WELL LOCATION PLAT			