

Measured Depth Log



Operator

it, Suite 3000
03

Geologist

street, Suite 3000
03

Rock Types

AL	CONGLOMERATE	XX XX XX	METAMORPHIC	SHALY SILTSTONE
DOLOMITE	DOLOMITE	XX XX XX	NO SAMPLE	SILT SHALE
GRANITE	GRANITE	XX XX XX	SANDSTONE	SILTSTONE
GYPSSUM	GYPSSUM	XX XX XX	SALT-PEPPER SANIC	TUFF
IGNEOUS	IGNEOUS	XX XX XX	SHALE	WELDED TUFF
SIDERITE or LIMONITE	SIDERITE or LIMONITE	XX XX XX	SHALE COLORED	
LIMESTONE	LIMESTONE	XX XX XX	SHALE GRAY	
MARLSTONE	MARLSTONE	XX XX XX	SHALY SANDSTONE	

Accessories

Fossils	F FOSSIL	ARGILLACEOUS	GLAUCONITE	TUFFACEOUS
GASTROPOD	GASTROPOD	ARGILLITE GRAIN	GYPSEIFEROUS	
ALGAE	OOLITE	B BENTONITE	HEAVY MINERAL	
AMPHIPORA	OSTRACOD	BITUMENOUS SUBSTANCE	INOCERAMUS	ANHYDRITE STRINGER
BELEMNITE	PELECYPOD	BRECCIA FRAGMENTS	KAOLIN	BENTONITE STRINGER
BIOCLASTIC	PELLET	CALCAREOUS	MARLSTONE	COAL STRINGER
BRACHIOPOD	PISOLITE	CARBONACEOUS FLAMES	MINERAL CRYSTALS	DOLOMITE STRINGER
BRYOZOA	PLANT REMAINS	CHTK	NODULES	GYPSSUM STRINGER
CEPHALOPOD	PLANT SPORES	CHTLT	PHOSPHATE PELLETT	LIMESTONE STRINGER
CORAL	SCAPHOPOD	COAL - THIN BEDS	PYRITE	MARLSTONE (CALC) STRG
CRINOID	STROMATOPOROID	DOLOMITIC	SALT CAST	MARLSTONE (DOL) STRG
ECHINOID		FELDSPAR	SANDY	SANDSTONE STRINGER
FISH		FERRUGINOUS PELLET	SILICEOUS	SHALE STRINGER
FORAMINIFERA	ANHYDRITIC	FERRUGINOUS	SILTY	SILTSTONE STRINGER

Other Symbols

Oil Show	MOLDIC	FAULT	WIRELINE TESTED - LEFT	E EARTHY
DEAD	ORGANIC	FORMATION TOP	WIRELINE TESTED - RT	FX FINELYXLN
EVEN	PINPOINT	GAS SHOW		GS GRAINSTONE
	VUGGY	MINDEPTH MN DEPTH		L LITHOGRAPHIC
QUESTIONABLE		NORMAL FAULT	ANGULAR	MX MICROXLN
SPOTTED STAINING	BIT	OIL SHOW	ROUNDED	MS MUDSTONE
Porosity	CONNECTION (LEFT)	OVERTURNED STRATA	SUBANG	PS PACKSTONE
E EARTHY	CONNECTION (RIGHT)	REVERSE FAULT	SUBRND	WS WACKSTONE
F FRACTURE	CONNECTION GAS	SIDEWALL CORE (LEFT)		
INTERCRYSTALLINE	CORE - LOST	SIDEWALL CORE (RIGHT)		
INTEROOLITIC	CORE - RECOVERED	SLIDE		
	DST INTERVAL	SURVEY		
		TRIP GAS		
			B3 BOUNDSTONE	M MODERATE
			C CHALKY	P POOR
			CX CRYPTOXLN	W WELL

Downloaded from <http://ajph.org/> on November 10, 2015

3019u 400000 C1: 72.6%

Bit Data
 Bit #: 2
 Type: E-1202-A1E
 Size: 8.75
 Depth In: 933 '
 Jets: 5X16

CO2 (ppm)
 CO2 (units)

1460u

CO2: 9.6%
 C3: 10.5%
 C4: 7.2%

Figure 1: Evolution of the C2, C3, and C4 carbon isotope ratios (in ‰) over time (in years) for a sample from the Cretaceous period. The x-axis represents time in years, ranging from 0 to 146 million years (Ma). The y-axis represents the carbon isotope ratio in ‰, ranging from -10 to 10. Three data series are plotted: C2 (red solid line), C3 (blue dashed line), and C4 (green dotted line). A vertical line at 146 Ma marks the Cretaceous-Paleogene boundary. A small house icon is placed on the C2 line at approximately 10 Ma. The C2 line shows a significant negative excursion around 146 Ma, reaching a minimum of about -10 ‰. The C3 and C4 lines also show excursions but are less pronounced than C2.

6,110	6,120	6,130	6,140	6,150	6,160	6,170	6,180	6,190	6,200	6,210	6,220	6,230	6,240	6,250	6,260	6,270	6,280
-------	-------	-------	-------	--------------	-------	-------	-------	-------	--------------	-------	-------	-------	-------	--------------	-------	-------	-------

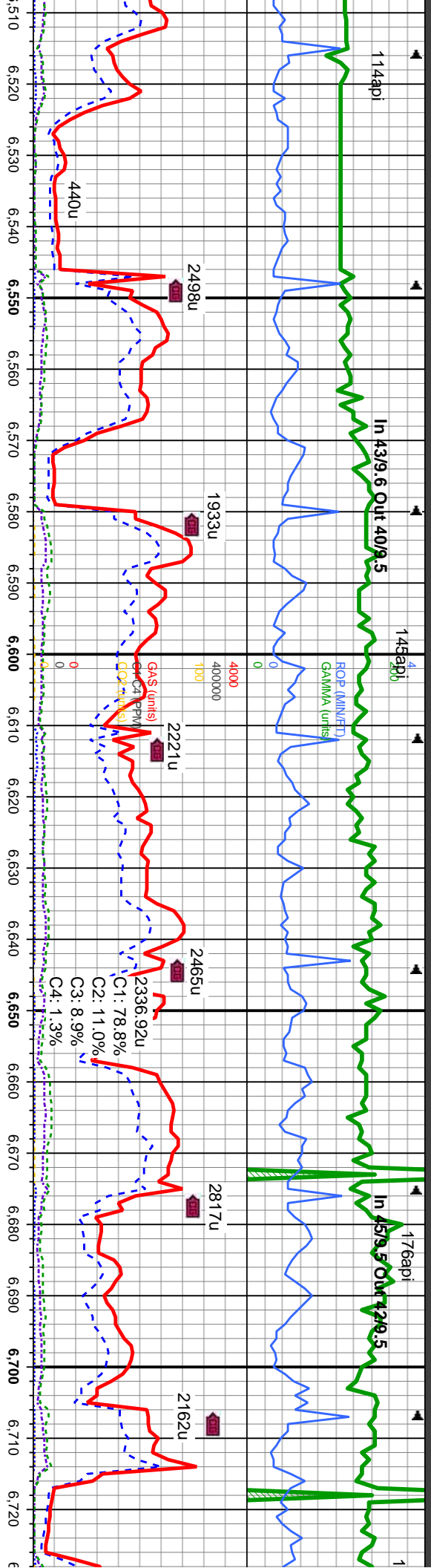


VS: -199.69'	Azimuth: 3.9°	Inclination: 2.3°
TVD	Azimuth: 6.5°	
VS: -198.4'	VS: -196.1'	Azimuth: 7°

MD: 6,276
TVD: 6,266
Inclination: 7

SLTY SH: It-m gy, sft, sb p
sl calc, w/ occ carb lams, q
SLTST: It gy, sft, sb pty, r
SHLY SS: Itgy, s&p, vfgr, i
m consol, sl calc cmt, n vis
It yel cut, n stn

[illegible]



MD: 6,530'
TVD: 6,509.3'
Inclination: 24.4 °
Azimuth: 8.8 °
VS: -125.02'

MD: 6,562'
TVD: 6,538.18'
Inclination: 26.6 °
Azimuth: 7.6 °
VS: -111.71'

MD: 6,594'
TVD: 6,566.51'
Inclination: 28.8 °
Azimuth: 6.8 °
VS: -97.28'

MD: 6,625'
TVD: 6,593.3'
Inclination: 31.6 °
Azimuth: 5.3 °
VS: -82.07'

MD: 6,657'
TVD: 6,620.17'
Inclination: 34.2 °
Azimuth: 3.7 °
VS: -65.03'

MD: 6,689'
TVD: 6,646.2'
Inclination: 36.9 °
Azimuth: 2.5 °
VS: -46.7'

MD: 6,720'
TVD: 6,670.53'
Inclination: 39.7 °
Azimuth: 1.4 °
VS: -27.71'

Sharon Springs
6680' MD/6638.88' TVD

SH: lt-m gy, sft, sb pily, rthy-grty tex,
sl calc, w/ occ carb lams, grdg to SHLY
SLTST: lt gy, sft, sb pily, rthy, silty sl calc, n
vis por n flor, fnt tr lt yel cut, n stn

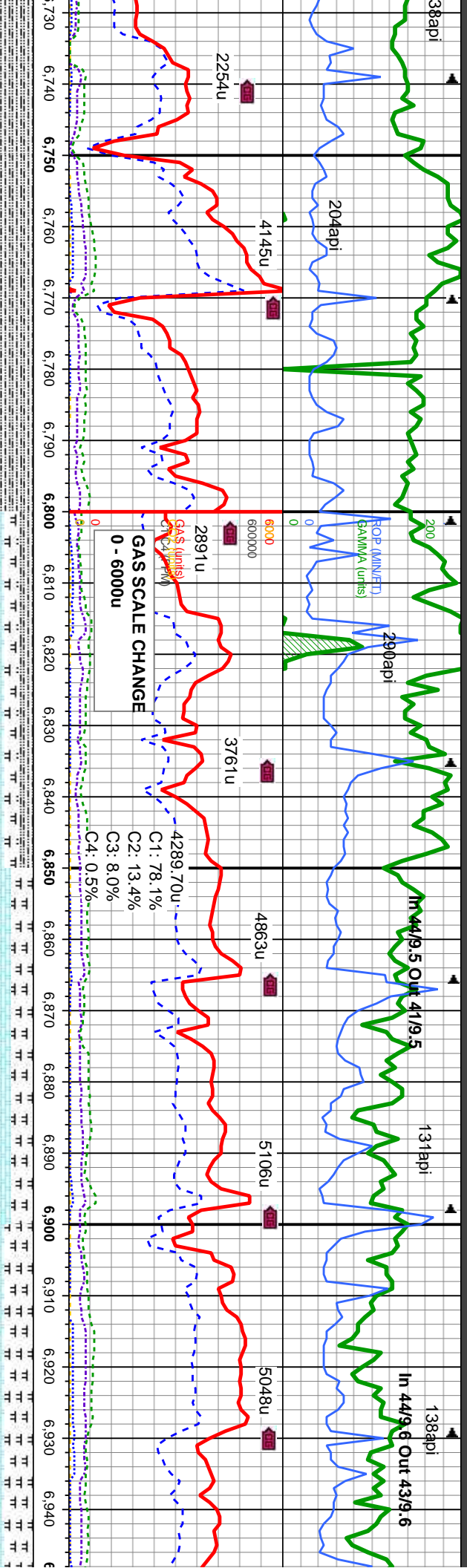
SLTY SH: lt-m gy, sft, sb pily, rthy-grty tex,
sl calc, w/ occ carb lams, grdg to SHLY
SLTST: lt gy, sft, sb pily, rthy, silty sl calc, n
vis por n flor, fnt tr lt yel cut, n stn

SLTY SH: lt-m gy, sft, sb pily, rthy-grty tex,
sl calc, w/ occ carb lams, grdg to SHLY
SLTST: lt gy, sft, sb pily, rthy, silty sl calc, n
vis por n flor, fnt tr lt yel cut, n stn

SLTY SH: lt-m gy, sft, sb pily, rthy-grty tex,
sl calc, w/ occ carb lams, grdg to SHLY
SLTST: lt gy, sft, sb pily, rthy, silty sl calc, n
vis por n flor, fnt tr lt yel cut, n stn

SLTY SH: lt-m gy, sft, sb
sl calc, w/ occ carb lams,
SLTST: lt gy, sft, sb pily,
vis por n flor, fnt tr lt yel c





ply, rthy-grty tex, grdg to SHLY rthy, silty sl calc, n calc, n vis por n flor, frnt tr lt yel cut, n stn

SLTY SH: lt-m gy, sft, sb ply, rthy-grty tex, sl calc, w/ occ carb lams, occ bent, grdg to SHLY SLTST: lt gy, sft, sb ply, rthy, silty sl calc, n vis por n flor, frnt tr lt yel cut, n stn

MD: 6,752
TVD: 6,694.62
Inclination: 42.6 °
Azimuth: 0.3 °
VS: 6.49'

MD: 6,784
TVD: 6,717.64
Inclination: 45.4 °
Azimuth: 359.1 °
VS: 28.71'

SLTYSH: dk gy, sme blk, ply - sbply, frm, fls, arg, gt tex, sl tr dism pyr, tr bent CHK: lt-m gy, occ wht-frm, sft - frm, occ brit, sbply, v wxy & sl lam txt, v calc; MRL: dk-m gy occ dkgyblk, firm, blk- sbply, rthy sl silty occ mot tex, vcalc, n bent, lt yel flor, fst stng lt yel cut, m yel stn.

MD: 6,815
TVD: 6,738.98
Inclination: 47.6 °
Azimuth: 359.3 °
VS: 51.19'

MD: 6,847
TVD: 6,760.01
Inclination: 50.2 °
Azimuth: 358.6 °
VS: 75.28'

CHK: lt-m gy, occ wht-frm, sft - frm, occ brit, sbply, v wxy & sl lam txt, v calc; MRL: dk-m gy occ dkgyblk, firm, blk- sbply, rthy sl silty occ mot tex, vcalc, n bent, lt yel flor, fst stng lt yel cut, m yel stn.

MD: 6,879
TVD: 6,779.91
Inclination: 52.9 °
Azimuth: 358.6 °
VS: 100.32'

CHK: lt-m gy, occ wht-frm, sft - frm, occ brit, sbply, v wxy & sl lam txt, v calc; MRL: dk-m gy occ dkgyblk, firm, blk- sbply, rthy sl silty occ mot tex, vcalc, n bent, lt yel flor, fst stng lt yel cut, m yel stn.

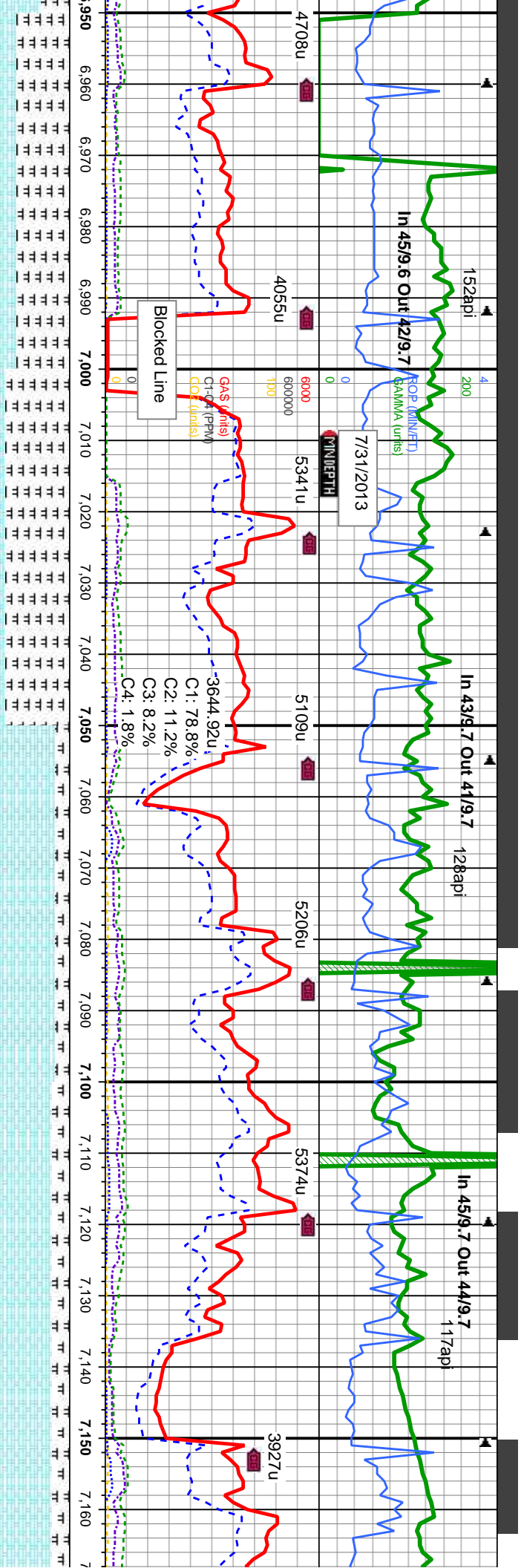
MD: 6,910
TVD: 6,797.97
Inclination: 55.8 °
Azimuth: 355
VS: 125.49'

MD: 6,942
TVD: 6,815.2
Inclination: 5
Azimuth: 355
VS: 152.38'

Niobrara A 6827' MD/ 6746.86' TVD

Niobrara B 6850' MD/ 6761.88' TVD





MRL: dk-m gy occ dkgyblk, firm, biky-sbply, rthy sl stly occ mot tex, vcalc, occ bent, lt yel flr, CHK: lt-m gy, occ wht-frm, sft - frm, occ brt, sbply, v wxy & sl lam txt, v calc; fst stmg lt yel cut, m yel stn.

MRL: dk-m gy occ dkgyblk, firm, biky-sbply, rthy sl stly occ mot tex, vcalc, occ bent, lt yel flr, CHK: lt-m gy, occ wht-frm, sft - frm, occ brt, sbply, v wxy & sl lam txt, v calc; fst stmg lt yel cut, m yel stn.

CHK: lt-m gy, occ wht-frm, sft - frm, occ brt, sbply, v wxy & sl lam txt, v calc; MRL: dk-m gy occ dkgyblk, firm, biky-sbply, rthy sl stly occ mot tex, vcalc, n bent, lt yel flr, fst stmg lt yel cut, m yel stn.

CHK: lt-m gy, occ wht-frm, sft - frm, occ brt, sbply, v wxy & sl lam txt, v calc; MRL: dk-m gy occ dkgyblk, firm, biky-sbply, rthy sl stly occ mot tex, vcalc, n bent, lt yel flr, fst stmg lt yel cut, m yel stn.

CHK: lt-m gy, occ wht-frm, sft - frm, occ brt, sbply, v wxy & sl lam txt, v calc; MRL: dk-m gy occ dkgyblk, firm, biky-sbply, rthy sl stly occ mot tex, vcalc, n bent, lt yel flr, fst stmg lt yel cut, m yel stn.

MD: 6,974
TVD: 6,831.18
Inclination: 61.7 °
Azimuth: 359.6 °
VS: 180.14'

MD: 7,006
TVD: 6,845.51
Inclination: 65.1 °
Azimuth: 359.5 °
VS: 208.74'

MD: 7,037
TVD: 6,857.67
Inclination: 68.7 °
Azimuth: 358.9 °
VS: 237.24'

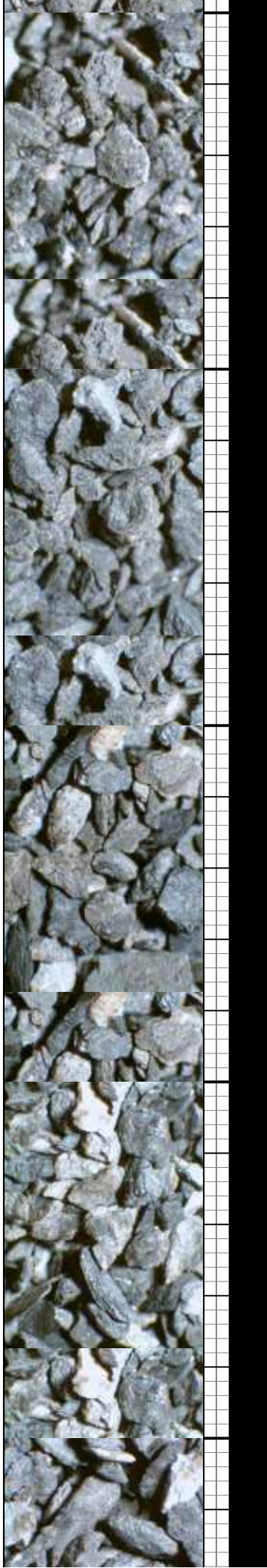
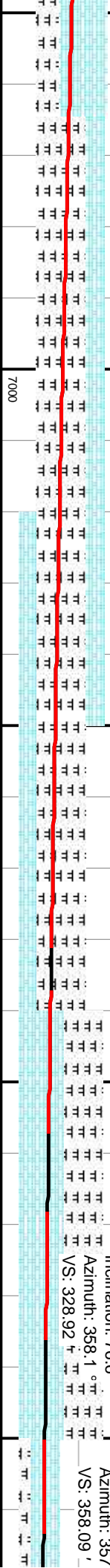
MD: 7,069
TVD: 6,868.46
Inclination: 71.9 °
Azimuth: 358.4 °
VS: 267.33'

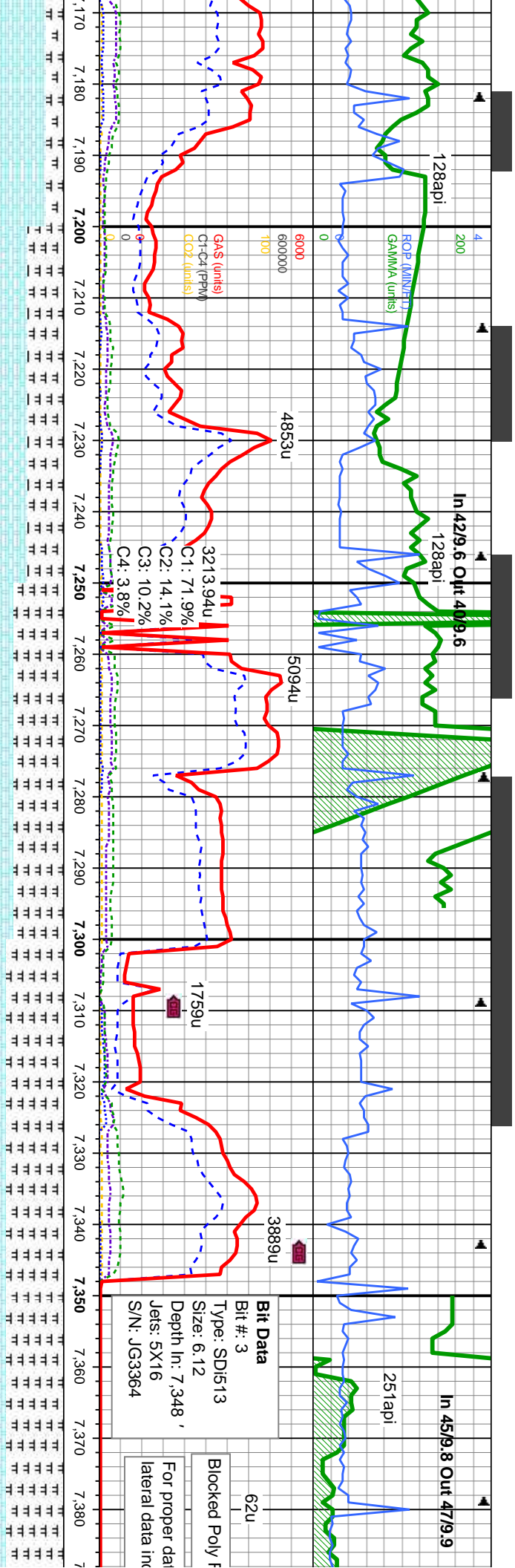
MD: 7,101
TVD: 6,877.62
Inclination: 74.8 °
Azimuth: 357.7 °
VS: 297.95'

MD: 7,133
TVD: 6,885.53
Inclination: 76.6 °
Azimuth: 358.1 °
VS: 328.92'

MD: 7,164
TVD: 6,892.3
Inclination: 77.1 °
Azimuth: 357.9 °
VS: 358.09'

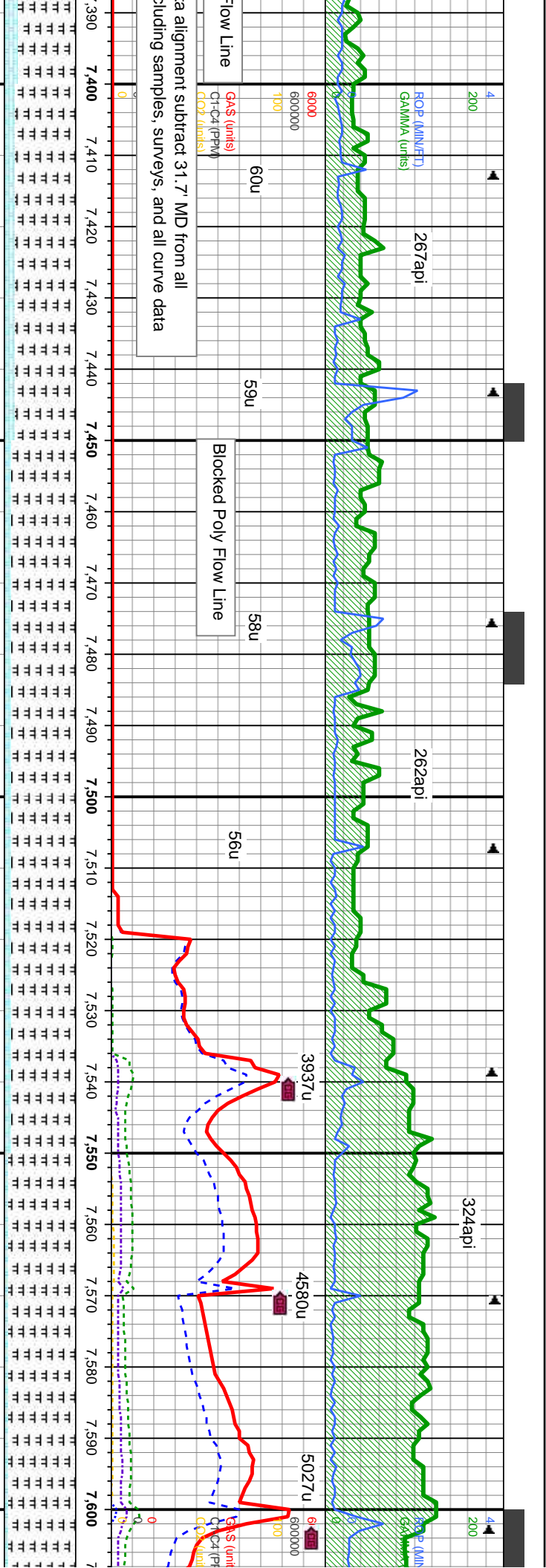
Niobrara C
7,101 MD / 6,878 TVD



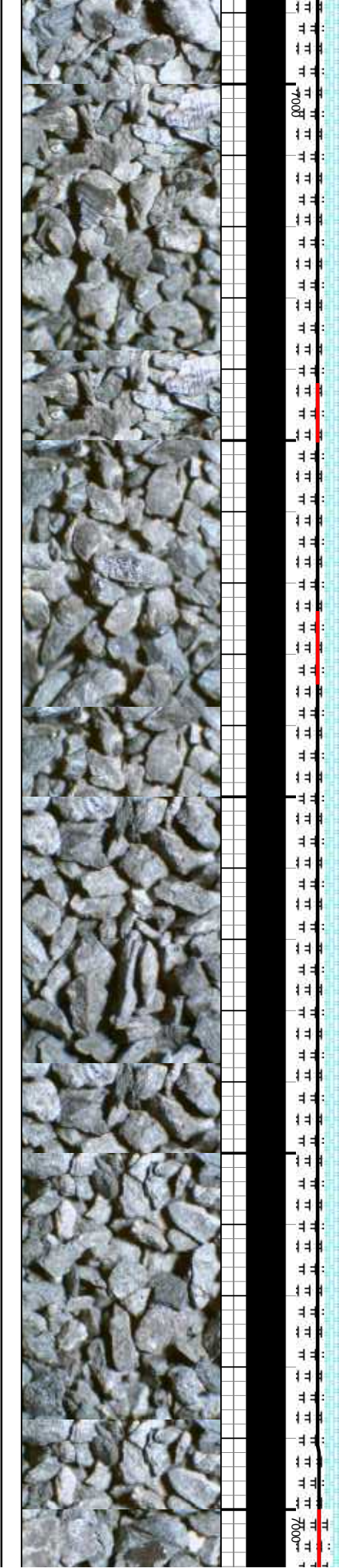


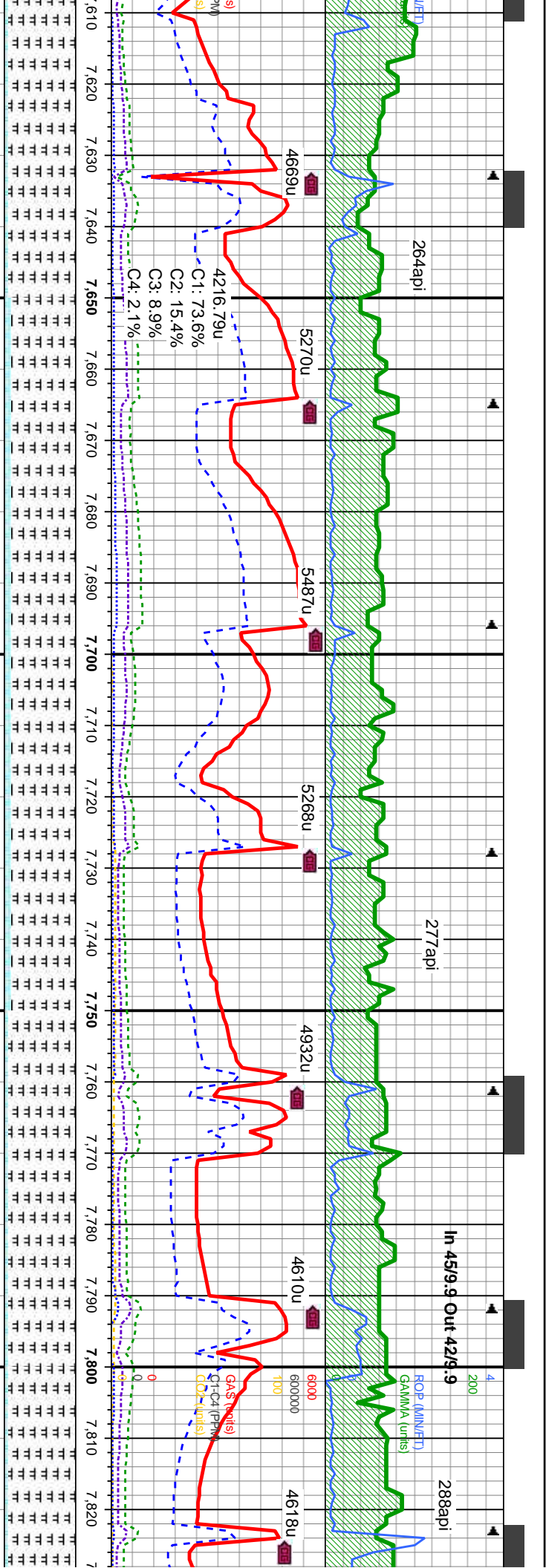
6000	CHK: lt-m gy, occ wht-frm, sft - frm, occ brit, sbblky, v wxy & sl lam txt, v calc; MRL: dk-m gy occ dkgyblk, frm, blk-y-sbply, rthy sl silty occ mot tex, vcalc, n bent, lt yel flr, fst sting lt yel cut, m yel sin.	CHK: lt-m gy, occ wht-frm, sft - frm, occ brit, sbblky, v wxy & sl lam txt, v calc; MRL: dk-m gy occ dkgyblk, frm, blk-y-sbply, rthy sl silty occ mot tex, vcalc, n bent, lt yel flr, fst sting lt yel cut, m yel sin.	CHK: lt-m gy, occ wht-frm, sft - frm, occ brit, sbblky, v wxy & sl lam txt, v calc; MRL: dk-m gy occ dkgyblk, frm, blk-y-sbply, rthy sl silty occ mot tex, vcalc, n bent, lt yel flr, fst sting lt yel cut, m yel sin.	CHK: lt-m gy, occ wht-frm, sft - frm, occ brit, sbblky, v wxy & sl lam txt, v calc; MRL: dk-m gy occ dkgyblk, frm, blk-y-sbply, rthy sl silty occ mot tex, vcalc, n bent, lt yel flr, fst sting lt yel cut, m yel sin.
MD: 7,196'	MD: 7,227'	MD: 7,259'	MD: 7,299'	MD: 7,348'
TVD: 6,898.83'	TVD: 6,904.35'	TVD: 6,909.07'	TVD: 6,913.08'	TVD: 6,915.22'
Inclination: 79.8 °	Inclination: 80.5 °	Inclination: 82.5 °	Inclination: 86 °	Inclination: 89 °
Azimuth: 357.5 °	Azimuth: 357.5 °	Azimuth: 356.3 °	Azimuth: 355.9 °	Azimuth: 355.9 °
VS: 389.41'	VS: 419.88'	VS: 437.59'	VS: 477.33'	VS: 526.23'
MD: 7,354'	MD: 7,381'	MD: 7,381'	MD: 7,381'	MD: 7,381'
TVD: 6,915.48'	TVD: 6,915.48'	TVD: 6,915.48'	TVD: 6,915.48'	TVD: 6,915.48'
Inclination: 89 °	Inclination: 89 °	Inclination: 89 °	Inclination: 89 °	Inclination: 89 °
Azimuth: 356.45 °	Azimuth: 356.45 °	Azimuth: 356.45 °	Azimuth: 356.45 °	Azimuth: 356.45 °
VS: 532.2'	VS: 578.7'	VS: 578.7'	VS: 578.7'	VS: 578.7'



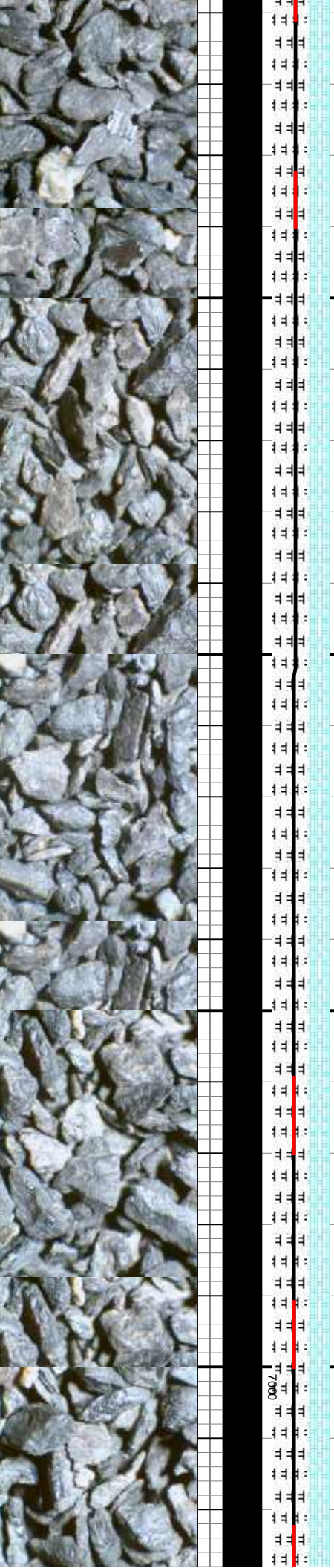


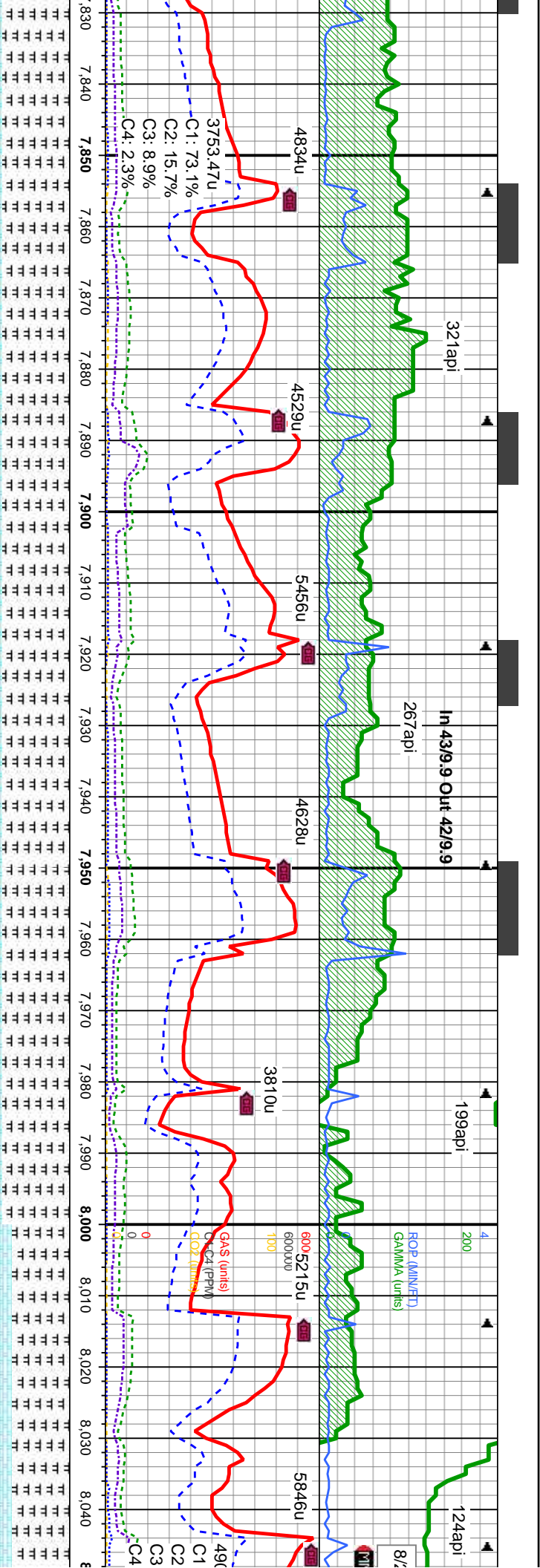
6000	CHK: lt-m gy, occ wht-frm, sft - firm, occ brit, sbblky, v wxy & sl lam txt, v calc; MRL: dk-m gy occ dkgyblk, firm, blk-y-sbply, rthy sl silty occ mot tex, vcalc, n bent, lt yel flor, fst string lt yel cut, m yel sin.	CHK: lt-m gy, occ wht-frm, sft - firm, occ brit, sbblky, v wxy & sl lam txt, v calc; MRL: dk-m gy occ dkgyblk, firm, blk-y-sbply, rthy sl silty occ mot tex, vcalc, n bent, lt yel flor, fst string lt yel cut, m yel sin.	CHK: lt-m gy, occ wht-frm, sft - firm, occ brit, sbblky, v wxy & sl lam txt, v calc; MRL: dk-m gy occ dkgyblk, firm, blk-y-sbply, rthy sl silty occ mot tex, vcalc, n bent, lt yel flor, fst string lt yel cut, m yel sin.	CHK: lt-m gy, occ wht-frm, sft - firm, occ brit, sbblky, v wxy & sl lam txt, v calc; MRL: dk-m gy occ dkgyblk, firm, blk-y-sbply, rthy sl silty occ mot tex, vcalc, n bent, lt yel flor, fst string lt yel cut, m yel sin.	CHK: lt-m gy, occ wht-frm, sft - firm, occ brit, sbblky, v wxy & sl lam txt, v calc; MRL: dk-m gy occ dkgyblk, firm, blk-y-sbply, rthy sl silty occ mot tex, vcalc, n bent, lt yel flor, fst string lt yel cut, m yel sin.
MD: 7,418 TVD: 6,916.4 Inclination: 89.3 ° Azimuth: 355.9 ° VS: 610.6 '	MD: 7,449 TVD: 6,916.67 Inclination: 89.7 ° Azimuth: 356.9 ° VS: 673.38 '	MD: 7,481 TVD: 6,916.67 Inclination: 90.3 ° Azimuth: 356.7 ° VS: 673.38 '	MD: 7,512 TVD: 6,916.35 Inclination: 90.9 ° Azimuth: 357 ° VS: 704.3 '	MD: 7,544 TVD: 6,915.68 Inclination: 91.1 ° Azimuth: 356.5 ° VS: 736.22 '	MD: 7,576 TVD: 6,915.07 Inclination: 91.1 ° Azimuth: 356.8 ° VS: 768.13 '



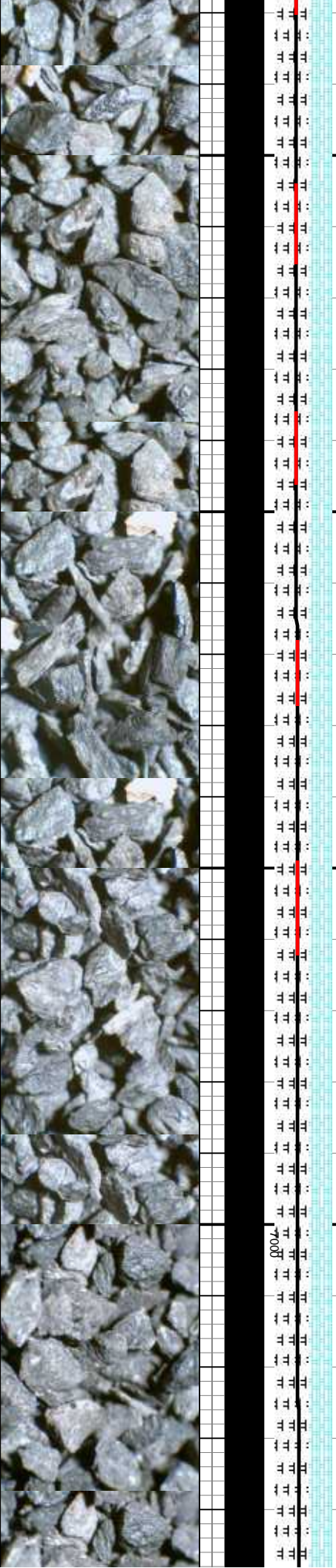


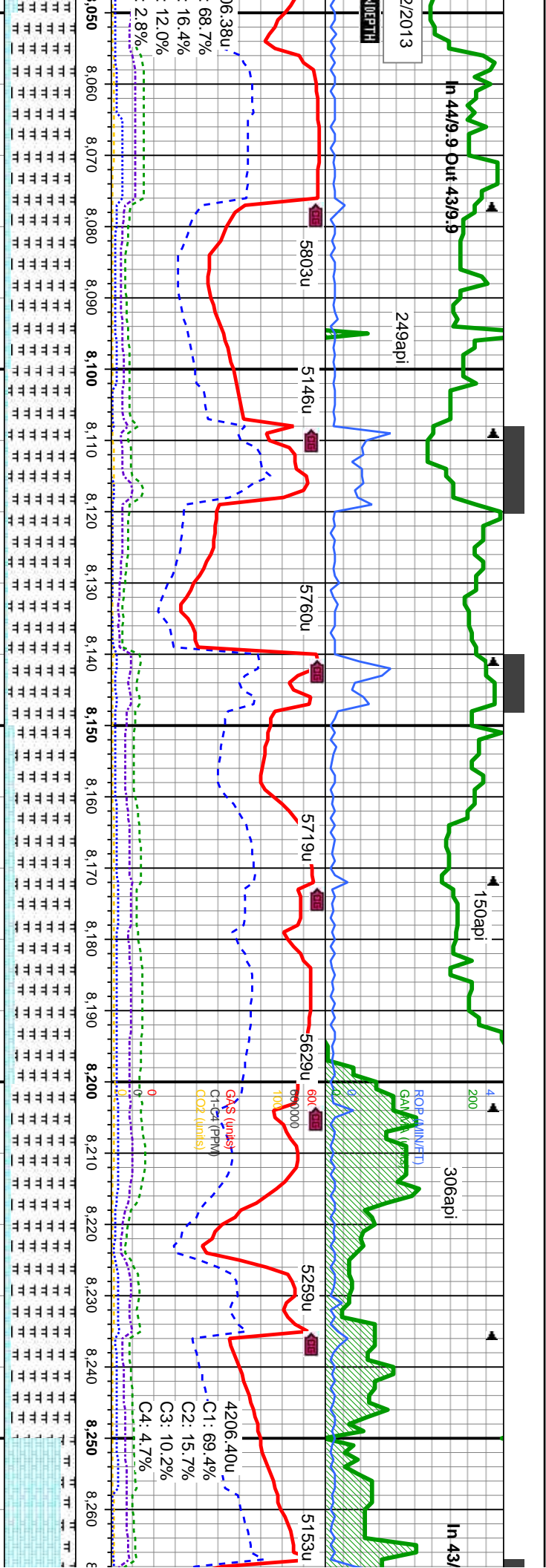
It-m gy, occ wht-crm, sft - frm, occ brit, sbblky, v wxy & sl lam txt, v calc; MRL: dk-m gy occ dkgyblk, firm, blkv- sppty, rthy occ mot tex, vcalc, n bent, lt yel flr, ng lt yel cut, m yel sin.	CHK: It-m gy, occ wht-crm, sft - frm, occ brit, sbblky, v wxy & sl lam txt, v calc; MRL: dk-m gy occ dkgyblk, firm, blkv- sppty, rthy sl silty occ mot tex, vcalc, n bent, lt yel flr, fst sting lt yel cut, m yel sin.	CHK: It-m gy, occ wht-crm, sft - frm, occ brit, sbblky, v wxy & sl lam txt, v calc; MRL: dk-m gy occ dkgyblk, firm, blkv- sppty, rthy sl silty occ mot tex, vcalc, n bent, lt yel flr, fst sting lt yel cut, m yel sin.	CHK: It-m gy, occ wht-crm, sft - frm, occ brit, sbblky, v wxy & sl lam txt, v calc; MRL: dk-m gy occ dkgyblk, firm, blkv- sppty, rthy sl silty occ mot tex, vcalc, n bent, lt yel flr, fst sting lt yel cut, m yel sin.	CHK: It-m gy, occ wht-crm, sft - frm, occ brit, sbblky, v wxy & sl lam txt, v calc; MRL: dk-m gy occ dkgyblk, firm, blkv- sppty, rthy sl silty occ mot tex, vcalc, n bent, lt yel flr, fst sting lt yel cut, m yel sin.
MD: 7.639 TVD: 6,914.37 Inclination: 90 ° Azimuth: 356.8 ° VS: 830.94	MD: 7.671 TVD: 6,914.51 Inclination: 89.5 ° Azimuth: 356.3 ° VS: 862.86	MD: 7.703 TVD: 6,914.82 Inclination: 89.4 ° Azimuth: 355.6 ° VS: 894.74	MD: 7.735 TVD: 6,915.13 Inclination: 89.5 ° Azimuth: 355.2 ° VS: 926.59	MD: 7.766 TVD: 6,915.4 Inclination: 89.5 ° Azimuth: 355.9 ° VS: 957.45
MD: 7.798 TVD: 6,915.65 Inclination: 89.6 ° Azimuth: 356.8 ° VS: 989.35	MD: 7.820 TVD: 6,915.8 Inclination: 89.7 ° Azimuth: 357.1 ° VS: 1020.6	MD: 7.842 TVD: 6,915.95 Inclination: 89.8 ° Azimuth: 357.3 ° VS: 1051.9	MD: 7.864 TVD: 6,916.1 Inclination: 89.9 ° Azimuth: 357.5 ° VS: 1083.2	MD: 7.886 TVD: 6,916.25 Inclination: 90 ° Azimuth: 357.7 ° VS: 1114.5



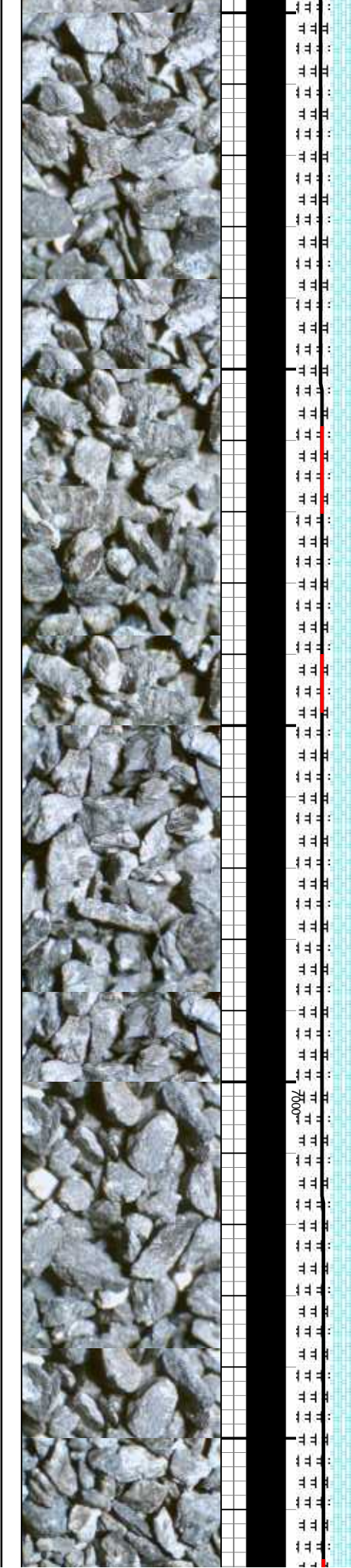


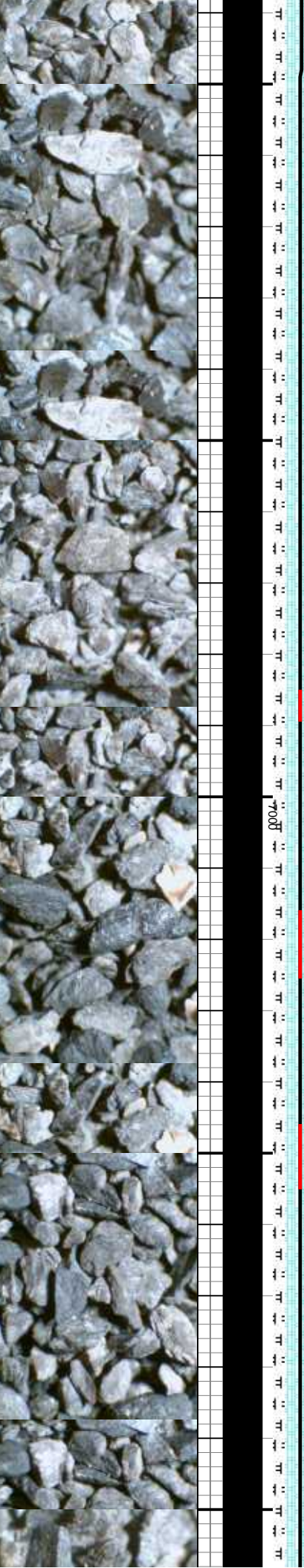
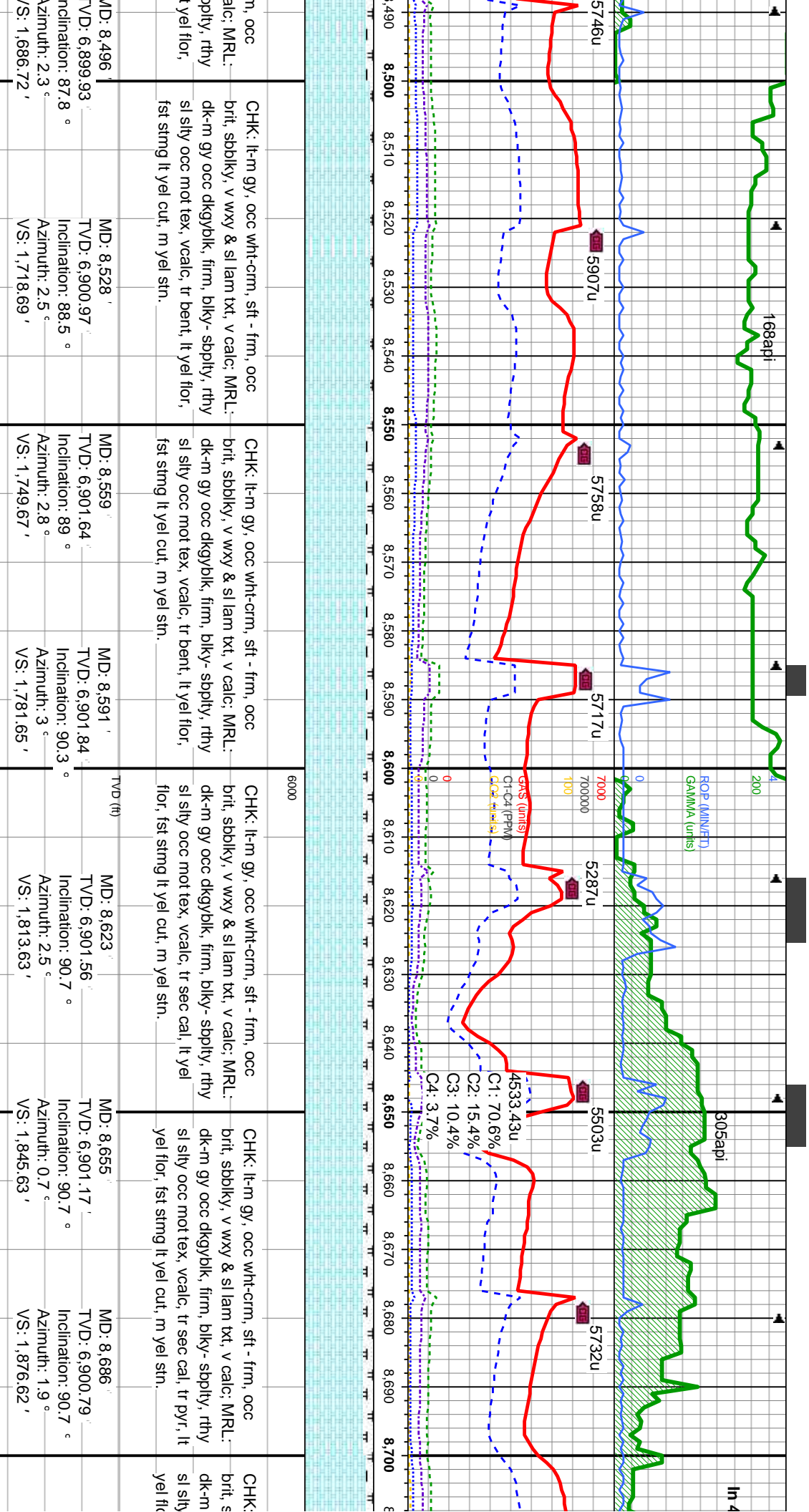
sft - firm, occ brit, sbblky, v wxy & sl lam txt, v calc; MR.L: dk-m gy occ dkyblk, firm, blk-y-spptly, rthy sl silty occ mot tex, vcalc, tr bent, lt yel flor, fst stmg lt yel cut, m yel sin.	CHK: lt-m gy, occ wht-crm, sft - firm, occ brit, sbblky, v wxy & sl lam txt, v calc; MR.L: dk-m gy occ dkyblk, firm, blk-y-spptly, rthy sl silty occ mot tex, vcalc, tr bent, lt yel flor, fst stmg lt yel cut, m yel sin.	CHK: lt-m gy, occ wht-crm, sft - firm, occ brit, sbblky, v wxy & sl lam txt, v calc; MR.L: dk-m gy occ dkyblk, firm, blk-y-spptly, rthy sl silty occ mot tex, vcalc, tr bent, lt yel flor, fst stmg lt yel cut, m yel sin.	CHK: lt-m gy, occ wht-crm, sft - firm, occ brit, sbblky, v wxy & sl lam txt, v calc; MR.L: dk-m gy occ dkyblk, firm, blk-y-spptly, rthy sl silty occ mot tex, vcalc, tr bent, lt yel flor, fst stmg lt yel cut, m yel sin.	MD: 7,830 TVD: 6,915.76 Inclination: 90.0 Azimuth: 357.5 VS: 1,021.28	MD: 7,861 TVD: 6,915.63 Inclination: 90.5 Azimuth: 358.4 VS: 1,052.24	MD: 7,893 TVD: 6,915.26 Inclination: 90.8 Azimuth: 359.1 VS: 1,084.21	MD: 7,925 TVD: 6,914.62 Inclination: 91.5 Azimuth: 0.5 VS: 1,116.2	MD: 7,956 TVD: 6,913.75 Inclination: 91.7 Azimuth: 1.8 VS: 1,147.19	MD: 7,988 TVD: 6,912.67 Inclination: 92.2 Azimuth: 1.9 VS: 1,179.16	TVD (ft)	MD: 8,020 TVD: 6,911.38 Inclination: 92.4 Azimuth: 1.6 VS: 1,211.14



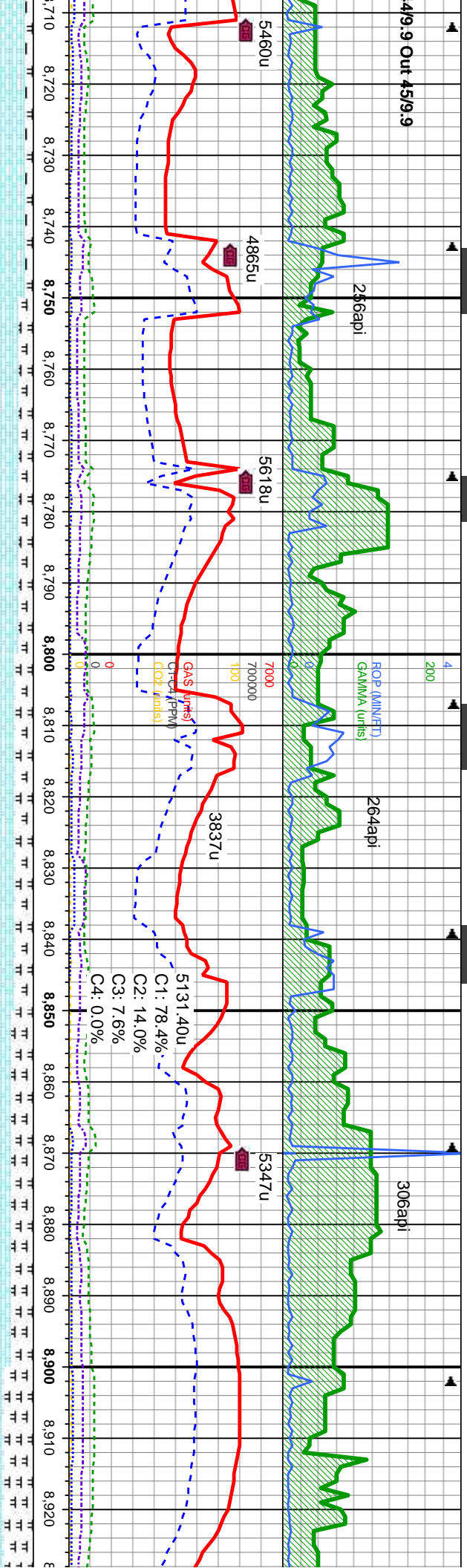


CHK: lt-m gy, occ wht-frm, sft - firm, occ brit, sbblky, v wxy & sl lam txt, v calc; MRL: dk-m gy occ dkgyblk, firm, blkly-spply, rthy sl silty occ mot tex, vcalc, tr bent, lt yel flor, fst stng lt yel cut, m yel stn.	CHK: lt-m gy, occ wht-frm, sft - firm, occ brit, sbblky, v wxy & sl lam txt, v calc; MRL: dk-m gy occ dkgyblk, firm, blkly-spply, rthy sl silty occ mot tex, vcalc, tr bent, lt yel flor, fst stng lt yel cut, m yel stn.	CHK: lt-m gy, occ wht-frm, sft - firm, occ brit, sbblky, v wxy & sl lam txt, v calc; MRL: dk-m gy occ dkgyblk, firm, blkly-spply, rthy sl silty occ mot tex, vcalc, tr bent, lt yel flor, fst stng lt yel cut, m yel stn.	CHK: lt-m gy, occ wht-frm, sft - firm, occ brit, sbblky, v wxy & sl lam txt, v calc; MRL: dk-m gy occ dkgyblk, firm, blkly-spply, rthy sl silty occ mot tex, vcalc, tr bent, lt yel flor, fst stng lt yel cut, m yel stn.
MD: 8,052 TVD: 6,908.93 Inclination: 92.8 ° Azimuth: 1.8 ° VS: 1,243.1 '	MD: 8,115 TVD: 6,906.8 Inclination: 92.6 ° Azimuth: 1.2 ° VS: 1,306.02 '	MD: 8,147 TVD: 6,905.65 Inclination: 91.5 ° Azimuth: 0.9 ° VS: 1,337.99 '	MD: 8,210 TVD: 6,903.92 Inclination: 91.8 ° Azimuth: 0.2 ° VS: 1,400.97 '
MD: 8,084 TVD: 6,908.31 Inclination: 93 ° Azimuth: 1.8 ° VS: 1,275.05 '	MD: 8,178 TVD: 6,904.84 Inclination: 91.5 ° Azimuth: 0.2 ° VS: 1,368.98 '	MD: 8,242 TVD: 6,902.77 Inclination: 92.3 ° Azimuth: 360 ° VS: 1,432.94 '	



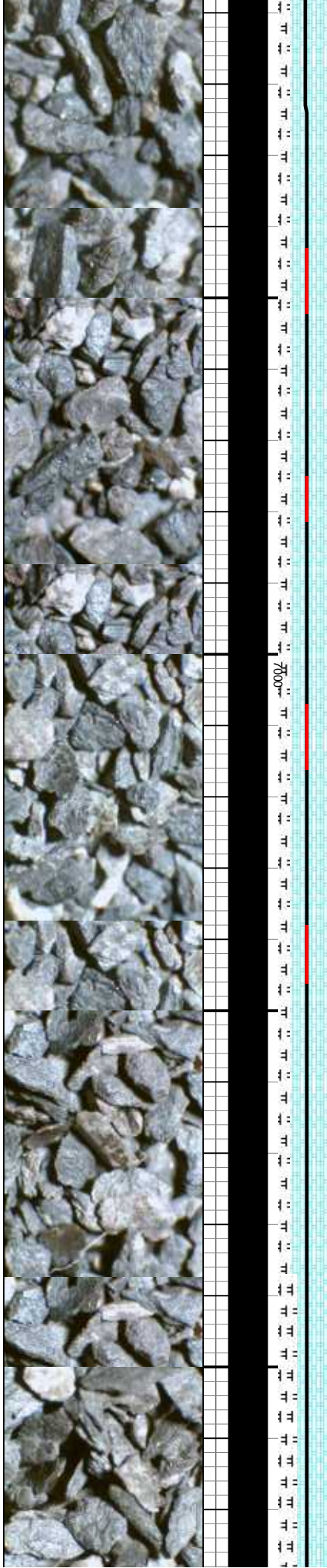


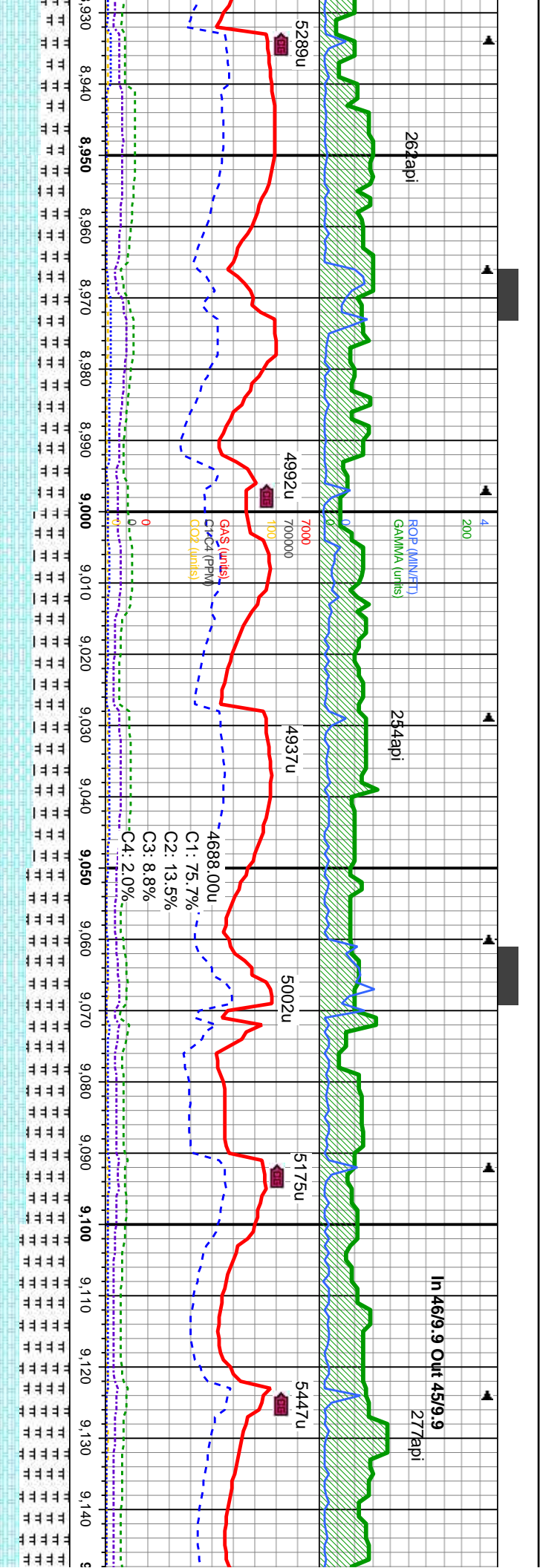
4/9.9 Out 45/9.9



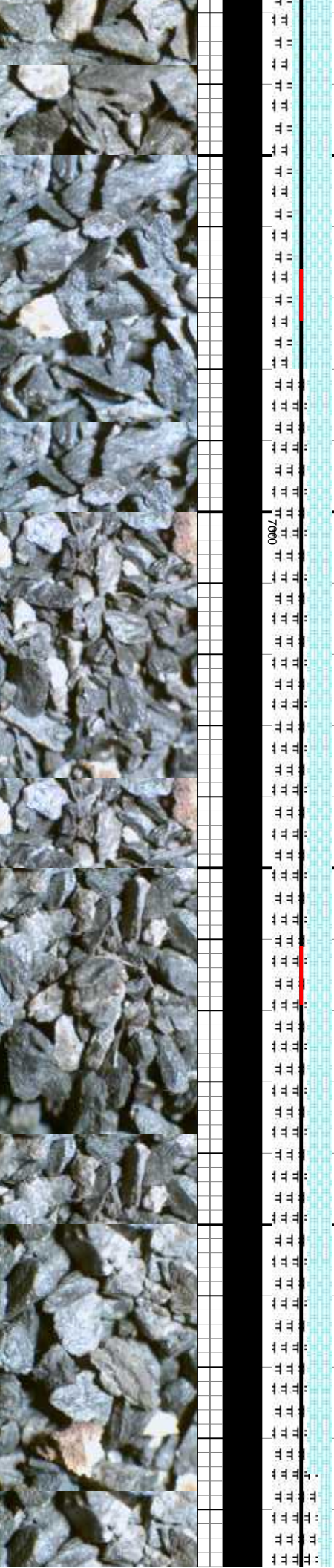
lt-m gy, occ wht-crm, sft - frm, occ bbkly, v wxy & sl lam txt, v calc; MRL: gy occ dkgyblk, frm, blkly-sbply, rthy occ mot tex, vcalc, tr sec cal, tr pyr, lt or, fst stmg lt yel cut, m yel sin.	CHK: lt-m gy, occ wht-crm, sft - frm, occ brit, sbkly, v wxy & sl lam txt, v calc; MRL: dk-m gy occ dkgyblk, frm, blkly-sbply, rthy sl silty occ mot tex, vcalc, tr sec cal, tr pyr, tr bent, lt yel flor, fst stmg lt yel cut, m yel sin.	CHK: lt-m gy, occ wht-crm, sft - frm, occ brit, sbkly, v wxy & sl lam txt, v calc; MRL: dk-m gy occ dkgyblk, frm, blkly-sbply, rthy sl silty occ mot tex, vcalc, tr sec cal, tr pyr, tr bent, lt yel flor, fst stmg lt yel cut, m yel sin.	CHK: lt-m gy, occ wht-crm, sft - frm, occ brit, sbkly, v wxy & sl lam txt, v calc; MRL: dk-m gy occ dkgyblk, frm, blkly-sbply, rthy sl silty occ mot tex, vcalc, tr sec cal, lt yel flor, fst stmg lt yel cut, m yel sin.	CHK: lt-m gy, occ wht-crm, sft - frm, occ brit, sbkly, v wxy & sl lam txt, v calc; MRL: dk-m gy occ dkgyblk, frm, blkly-sbply, fir sl silty occ mot tex, vcalc, tr sec cal, lt yel flor, fst stmg lt yel cut, m yel sin.
--	--	--	---	--

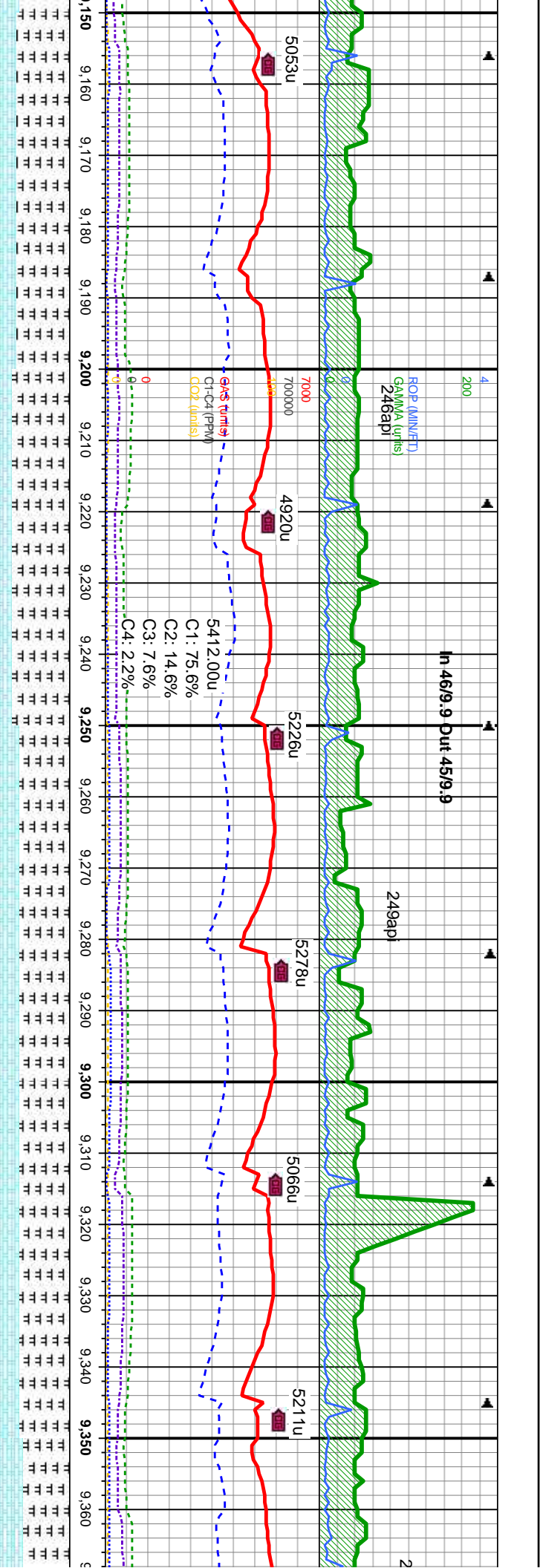
MD: 8,718 ' TVD: 6,900.17 ' Inclination: 91.5 ° Azimuth: 0 ° VS: 1,908.61 '	MD: 8,750 ' TVD: 6,899.17 ' Inclination: 92.1 ° Azimuth: 358.9 ° VS: 1,940.59 '	MD: 8,782 ' TVD: 6,898.02 ' Inclination: 92 ° Azimuth: 358.1 ° VS: 1,972.54 '	MD: 8,813 ' TVD: 6,897.16 ' Inclination: 91.2 ° Azimuth: 357.2 ° VS: 2,003.48 '	MD: 8,845 ' TVD: 6,896.63 ' Inclination: 90.7 ° Azimuth: 357.4 ° VS: 2,035.41 '	MD: 8,877 ' TVD: 6,896.32 ' Inclination: 90.4 ° Azimuth: 358.4 ° VS: 2,067.36 '	MD: 8,909 ' TVD: 6,896.38 ' Inclination: 89.4 ° Azimuth: 355.8 ° VS: 2,099.29 '
---	---	---	---	---	---	---



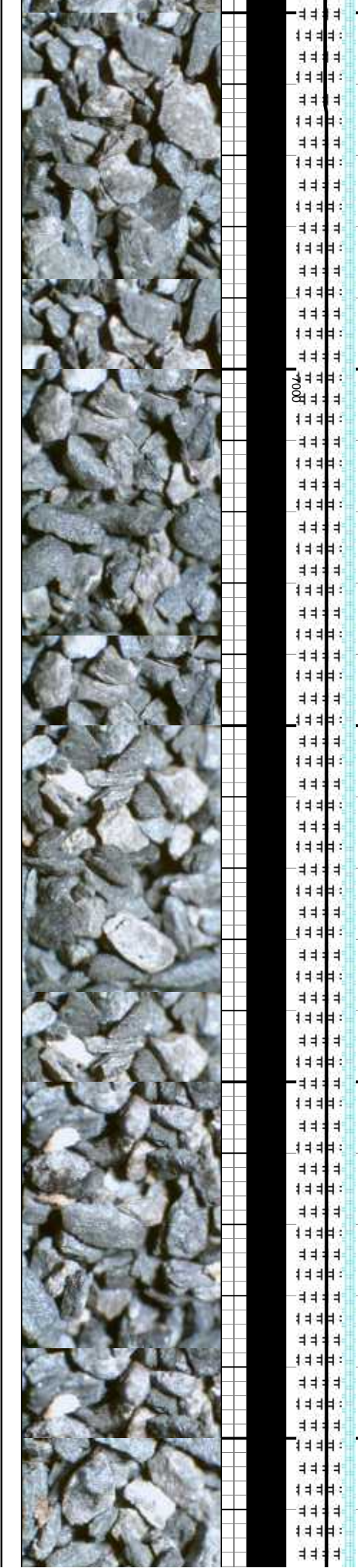


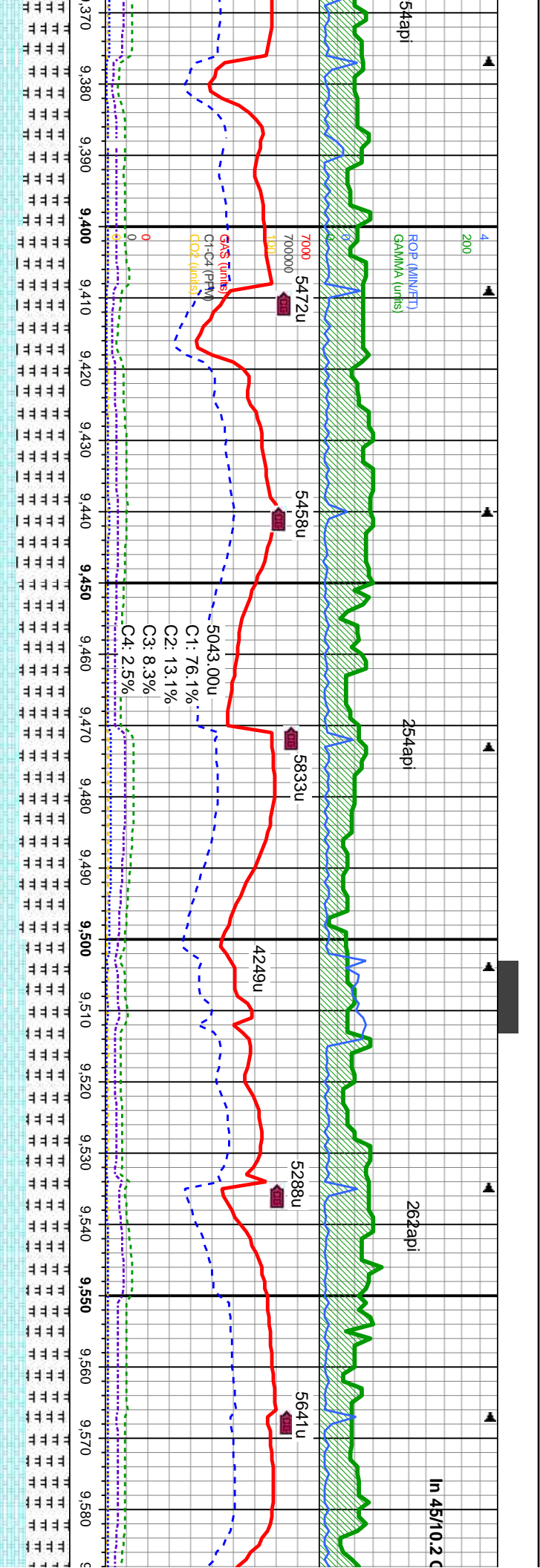
mm, sft - frm, occ lam txt, v calc; MRL: m, blk- sbply, rthy yel stn.	CHK: lt-m gy, occ wht-crm, sft - frm, occ brit, sbblk, v wxy & sl lam txt, v calc; MRL: dk-m gy occ dkgyblk, frm, blk- sbply, rthy sl sily occ mot tex, vcalc, tr sec cal lt yel flor, fst sting lt yel cut, m yel stn.	6000	CHK: lt-m gy, occ wht-crm, sft - frm, occ brit, sbblk, v wxy & sl lam txt, v calc; MRL: dk-m gy occ dkgyblk, frm, blk- sbply, rthy sl sily occ mot tex, vcalc, tr sec cal lt yel flor, fst sting lt yel cut, m yel stn.	CHK: lt-m gy, occ wht-crm, sft - frm, occ brit, sbblk, v wxy & sl lam txt, v calc; MRL: dk-m gy occ dkgyblk, frm, blk- sbply, rthy sl sily occ mot tex, vcalc, tr sec cal lt yel flor, fst sting lt yel cut, m yel stn.
MD: 8,940 ' TVD: 6,896.78 ' Inclination: 89.1 ° Azimuth: 356.5 ° VS: 2,130.18 '	MD: 8,972 ' TVD: 6,896.98 ' Inclination: 90.2 ° Azimuth: 357.7 ° VS: 2,162.1 '	MD: 9,003 ' TVD: 6,897.09 ' Inclination: 89.4 ° Azimuth: 356.1 ° VS: 2,193.03 '	MD: 9,035 ' TVD: 6,897.25 ' Inclination: 90 ° Azimuth: 358.6 ° VS: 2,224.96 '	MD: 9,067 ' TVD: 6,897.14 ' Inclination: 90.4 ° Azimuth: 359.3 ° VS: 2,256.94 '
				MD: 9,099 ' TVD: 6,896.91 ' Inclination: 90.2 ° Azimuth: 259.8 ° VS: 2,288.93 '
				MD: 9,130 ' TVD: 6,896.62 ' Inclination: 90.6 ° Azimuth: 0.2 ° VS: 2,319.93 '



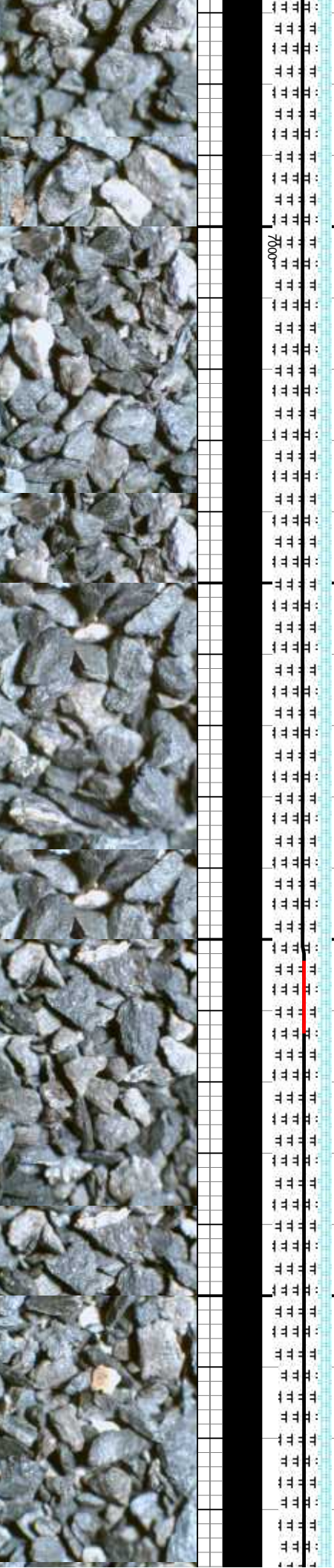


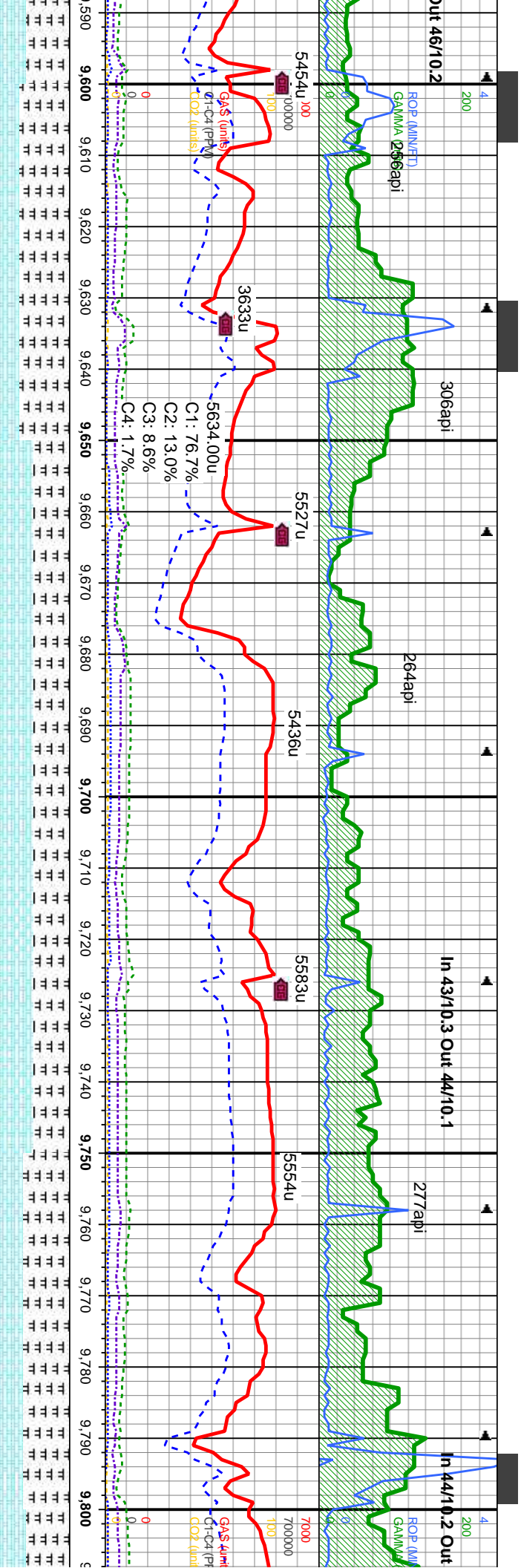
CHK: lt-m gy, occ wht-frm, sft - frm, occ brit, sbblky, v wxy & sl lam txt, v calc; MRL: dk-m gy occ dkgyblk, firm, blkly- sbply, rthy sl stly occ mot tex, vcalc, tr sec cal, lt yel flr, fst sting lt yel cut, m yel stn.	CHK: lt-m gy, occ wht-frm, sft - frm, occ brit, sbblky, v wxy & sl lam txt, v calc; MRL: dk-m gy occ dkgyblk, firm, blkly- sbply, rthy sl stly occ mot tex, vcalc, tr sec cal, lt yel flr, fst sting lt yel cut, m yel stn.	CHK: lt-m gy, occ wht-frm, sft - frm, occ brit, sbblky, v wxy & sl lam txt, v calc; MRL: dk-m gy occ dkgyblk, firm, blkly- sbply, rthy sl stly occ mot tex, vcalc, tr sec cal, lt yel flr, fst sting lt yel cut, m yel stn.	CHK: lt-m gy, occ wht-frm, sft - frm, occ brit, sbblky, v wxy & sl lam txt, v calc; MRL: dk-m gy occ dkgyblk, firm, blkly- sbply, rthy sl stly occ mot tex, vcalc, tr sec cal, lt yel flr, fst sting lt yel cut, m yel stn.	CHK: lt-m gy, occ wht-frm, sft - frm, occ brit, sbblky, v wxy & sl lam txt, v calc; MRL: dk-m gy occ dkgyblk, firm, blkly- sbply, rthy sl stly occ mot tex, vcalc, tr sec cal, lt yel flr, fst sting lt yel cut, m yel stn.
MD: 9,162 TVD: 6,896.31 Inclination: 90.5 ° Azimuth: 0.2 ° VS: 2,351.92 '	MD: 9,193 TVD: 6,896.04 Inclination: 90.5 ° Azimuth: 0 ° VS: 2,382.92 '	MD: 9,225 TVD: 6,895.7 Inclination: 90.7 ° Azimuth: 1.2 ° VS: 2,414.92 '	MD: 9,257 TVD: 6,895.31 Inclination: 90.7 ° Azimuth: 1.4 ° VS: 2,446.91 '	MD: 9,288 TVD: 6,894.99 Inclination: 90.5 ° Azimuth: 0.7 ° VS: 2,477.91 '
MD: 9,320 TVD: 6,894.68 Inclination: 90.6 ° Azimuth: 0.5 ° VS: 2,509.91 '	MD: 9,352 TVD: 6,894.32 Inclination: 90.7 ° Azimuth: 0.7 ° VS: 2,541.91 '			



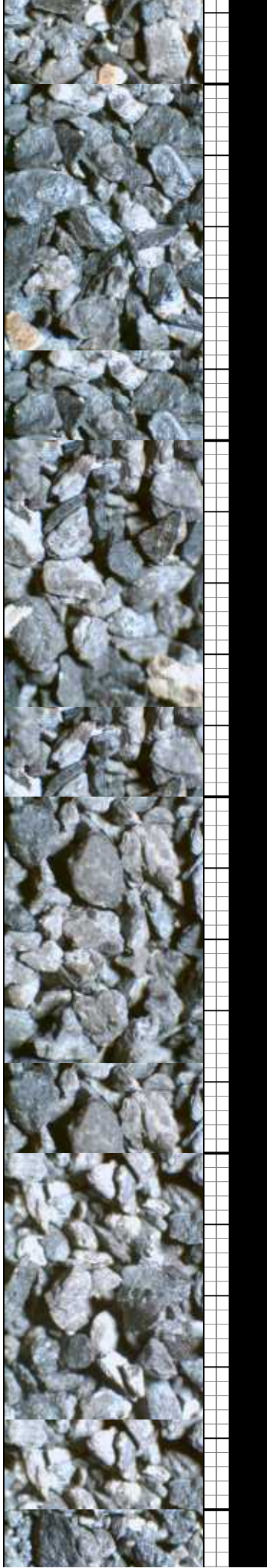


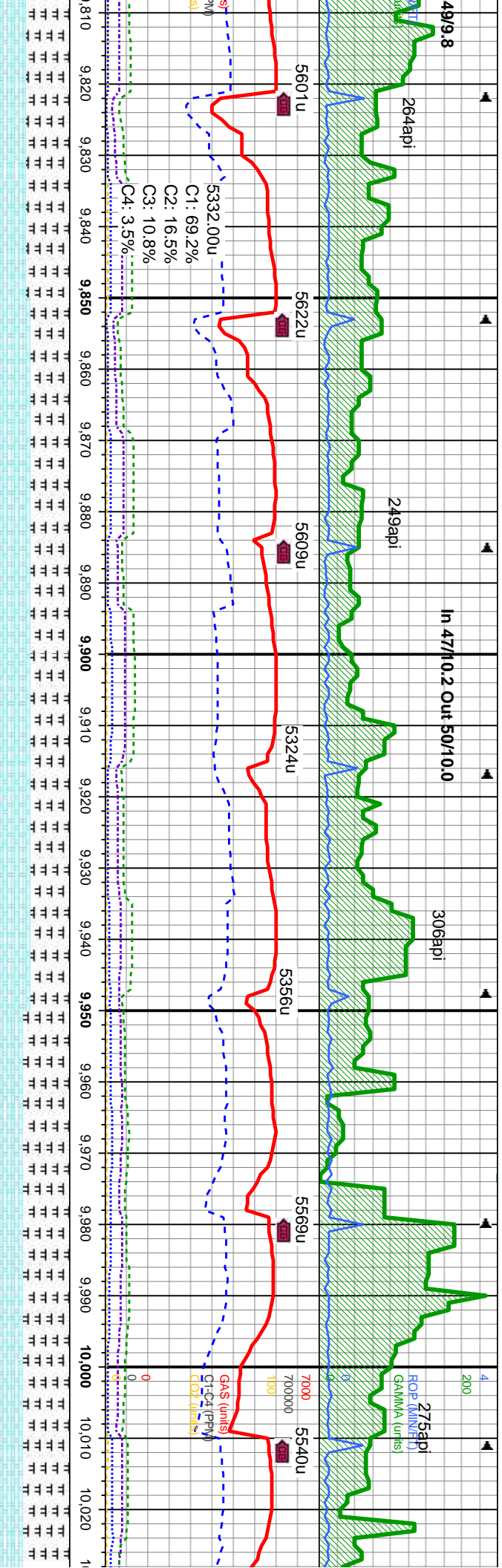
occ wht-crm, sft - frm, occ xxy & sl lam txt, v calc; MRL: dk-m gy occ dkgyblk, firm, blkv- spty, rthy st smg lt yel cut, m yel stn.	CHK: lt-m gy, occ wht-crm, sft - frm, occ brit, sbblky, v wxy & sl lam txt, v calc; MRL: dk-m gy occ dkgyblk, firm, blkv- spty, rthy sl silty occ mot tex, vcalc, tr sec cal, tr foss, lt yel flor, fst smg lt yel cut, m yel stn.	CHK: lt-m gy, occ wht-crm, sft - frm, occ brit, sbblky, v wxy & sl lam txt, v calc; MRL: dk-m gy occ dkgyblk, firm, blkv- spty, rthy sl silty occ mot tex, vcalc, tr sec cal, tr foss, lt yel flor, fst smg lt yel cut, m yel stn.	CHK: lt-m gy, occ wht-crm, sft - frm, occ brit, sbblky, v wxy & sl lam txt, v calc; MRL: dk-m gy occ dkgyblk, firm, blkv- spty, rthy sl silty occ mot tex, vcalc, tr sec cal, tr foss, lt yel flor, fst smg lt yel cut, m yel stn.	CHK: lt-m gy, occ wht-crm, sft - frm, occ brit, sbblky, v wxy & sl lam txt, v calc; MRL: dk-m gy occ dkgyblk, firm, blkv- spty, rthy sl silty occ mot tex, vcalc, tr sec cal, tr foss, lt yel flor, fst smg lt yel cut, m yel stn.
MD: 9.383 ' TVD: 6,893.94 ' Inclination: 90.7 ° Azimuth: 0.3 ° VS: 2,573.9 '	TVD (ft) MD: 9.416 ' TVD: 6,893.57 ' Inclination: 90.6 ° Azimuth: 2.1 ° VS: 2,605.9 '	MD: 9.446 ' TVD: 6,893.17 ' Inclination: 90.9 ° Azimuth: 3.9 ° VS: 2,635.87 '	MD: 9.478 ' TVD: 6,892.75 ' Inclination: 90.6 ° Azimuth: 2.6 ° VS: 2,667.84 '	MD: 9.510 ' TVD: 6,892.53 ' Inclination: 90.2 ° Azimuth: 1.2 ° VS: 2,699.84 '
	MD: 9.542 ' TVD: 6,892.22 ' Inclination: 90.9 ° Azimuth: 3.9 ° VS: 2,731.82 '	MD: 9.574 ' TVD: 6,891.81 ' Inclination: 91.1 ° Azimuth: 4.4 ° VS: 2,763.76 '		





6000	CHK: lt-m gy, occ wht-frm, sft - firm, occ brit, sbblky, v wxy & sl lam txt, v calc; MRL: dk-m gy occ dkgyblk, firm, blkv-spptly, rthy sl silty occ mot tex, vcalc, tr sec cal, tr foss, lt yel flr, fst stmg lt yel cut, m yel sin.	CHK: lt-m gy, occ wht-frm, sft - firm, occ brit, sbblky, v wxy & sl lam txt, v calc; MRL: dk-m gy occ dkgyblk, firm, blkv-spptly, rthy sl silty occ mot tex, vcalc, tr sec cal, tr foss, lt yel flr, fst stmg lt yel cut, m yel sin.	CHK: lt-m gy, occ wht-frm, sft - firm, occ brit, sbblky, v wxy & sl lam txt, v calc; MRL: dk-m gy occ dkgyblk, firm, blkv-spptly, rthy sl silty occ mot tex, vcalc, tr sec cal, tr foss, lt yel flr, fst stmg lt yel cut, m yel sin.	CHK: lt-m gy, occ wht-frm, sft - firm, occ brit, sbblky, v wxy & sl lam txt, v calc; MRL: dk-m gy occ dkgyblk, firm, blkv-spptly, rthy sl silty occ mot tex, vcalc, tr sec cal, tr foss, lt yel flr, fst stmg lt yel cut, m yel sin.	CHK: lt-m gy, occ wht-frm, sft - firm, occ brit, sbblky, v wxy & sl lam txt, v calc; MRL: dk-m gy occ dkgyblk, firm, blkv-spptly, rthy sl silty occ mot tex, vcalc, tr sec cal, tr foss, lt yel flr, fst stmg lt yel cut, m yel sin.	6000
MD: 9,606 TVD: 6,891.5 Inclination: 90 ° Azimuth: 1.8 ° VS: 2,795.74 '	MD: 9,637 TVD: 6,891.66 Inclination: 89.4 ° Azimuth: 1 ° VS: 2,826.74 '	MD: 9,669 TVD: 6,892.05 Inclination: 89.2 ° Azimuth: 0.5 ° VS: 2,858.73 '	MD: 9,701 TVD: 6,892.55 Inclination: 89 ° Azimuth: 360 ° VS: 2,890.73 '	MD: 9,733 TVD: 6,885.06 Inclination: 88.8 ° Azimuth: 0.7 ° VS: 2,925.97 '	MD: 9,733 TVD: 6,893.17 Inclination: 88.8 ° Azimuth: 0.7 ° VS: 2,922.72 '	MD: 9,796 TVD: 6,894 Inclination: 89.6 ° Azimuth: 359.6 ° VS: 2,985.71 '

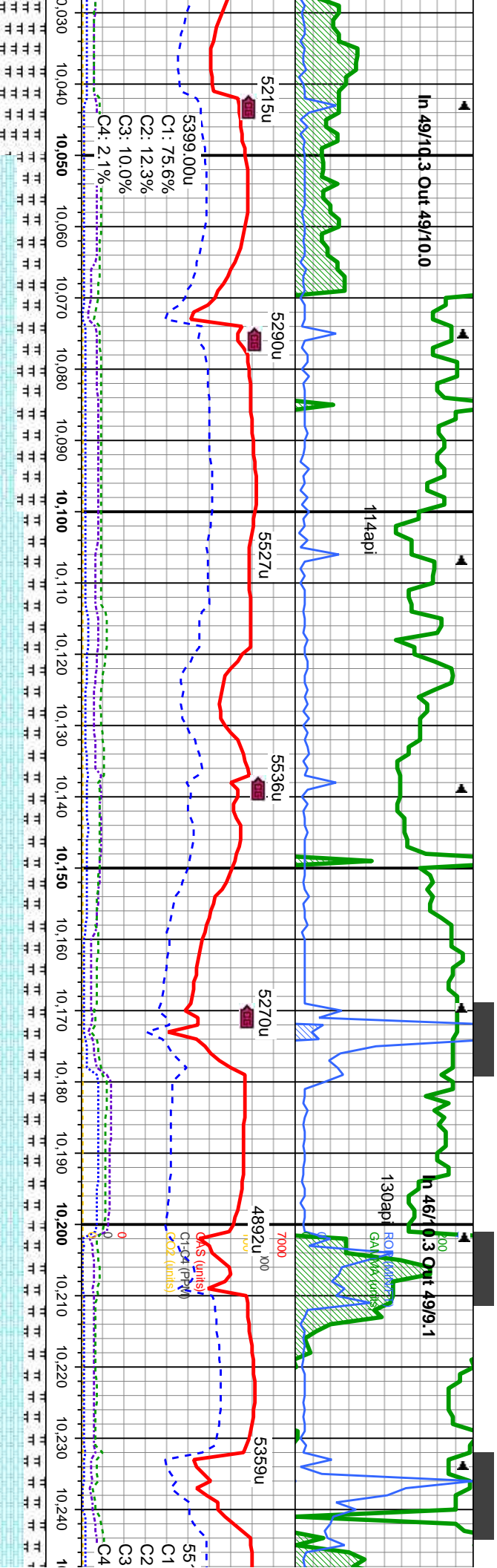




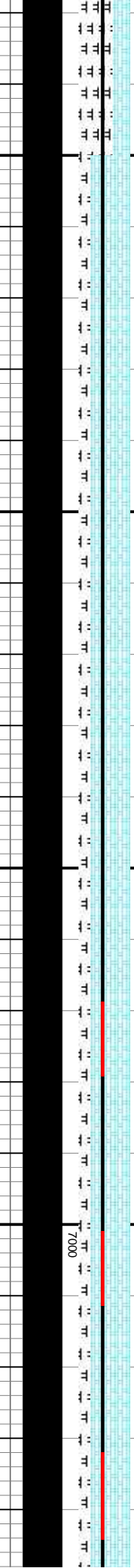
lt-m gy, occ wht-frm, sft - frm, occ brit, sbblky, v wxy & sl lam txt, v calc: MRL: dk-m gy occ dkgyblk, firm, blkv-splpty, rthy sl silty occ mot tex, vcalc, tr sec cal, tr foss,lt yel flor, fst sting lt yel cut, m yel sin.	CHK: lt-m gy, occ wht-frm, sft - frm, occ brit, sbblky, v wxy & sl lam txt, v calc: MRL: dk-m gy occ dkgyblk, firm, blkv-splpty, rthy sl silty occ mot tex, vcalc, tr sec cal, tr foss,lt yel flor, fst sting lt yel cut, m yel sin.	CHK: lt-m gy, occ wht-frm, sft - frm, occ brit, sbblky, v wxy & sl lam txt, v calc: MRL: dk-m gy occ dkgyblk, firm, blkv-splpty, rthy sl silty occ mot tex, vcalc, tr sec cal, tr foss,lt yel flor, fst sting lt yel cut, m yel sin.	CHK: lt-m gy, occ wht-frm, sft - frm, occ brit, sbblky, v wxy & sl lam txt, v calc: MRL: dk-m gy occ dkgyblk, firm, blkv-splpty, rthy sl silty occ mot tex, vcalc, tr sec cal, tr foss,lt yel flor, fst sting lt yel cut, m yel sin.	CHK: lt-m gy, occ wht-frm, sft - frm, occ brit, sbblky, v wxy & sl lam txt, v calc: MRL: dk-m gy occ dkgyblk, firm, blkv-splpty, rthy sl silty occ mot tex, vcalc, tr sec cal, tr foss,lt yel flor, fst sting lt yel cut, m yel sin.
MD: 9.828 TVD: 6.894 Inclination: 90.4 ° Azimuth: 359.8 ° VS: 3,017.7'	MD: 9.860 TVD: 6.893.77 Inclination: 90.4 ° Azimuth: 359.5 ° VS: 3,049.69'	MD: 9.923 TVD: 6.893.94 Inclination: 89.6 ° Azimuth: 358.1 ° VS: 3,112.63'	MD: 9.955 TVD: 6.894.14 Inclination: 89.7 ° Azimuth: 358.4 ° VS: 3,144.6'	MD: 9.986 TVD: 6.894.25 Inclination: 89.9 ° Azimuth: 357 ° VS: 3,175.55'
				TVD (ft)
				MD: 10.018 TVD: 6.894.38 Inclination: 89.6 ° Azimuth: 357.2 ° VS: 3,207.48'

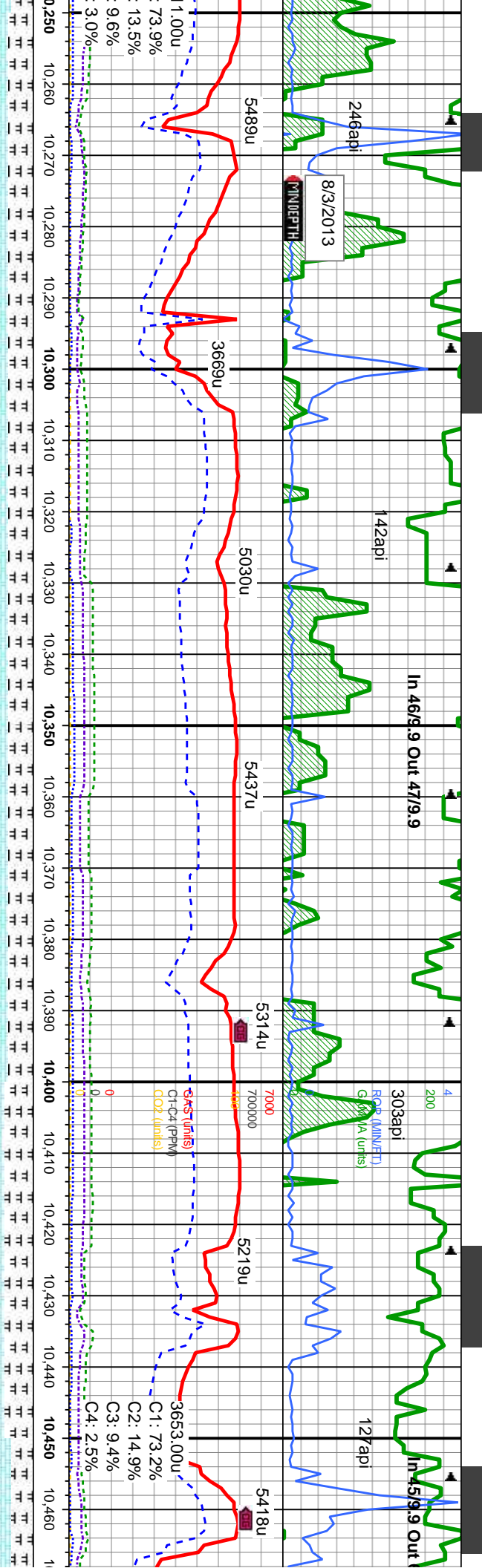
7000



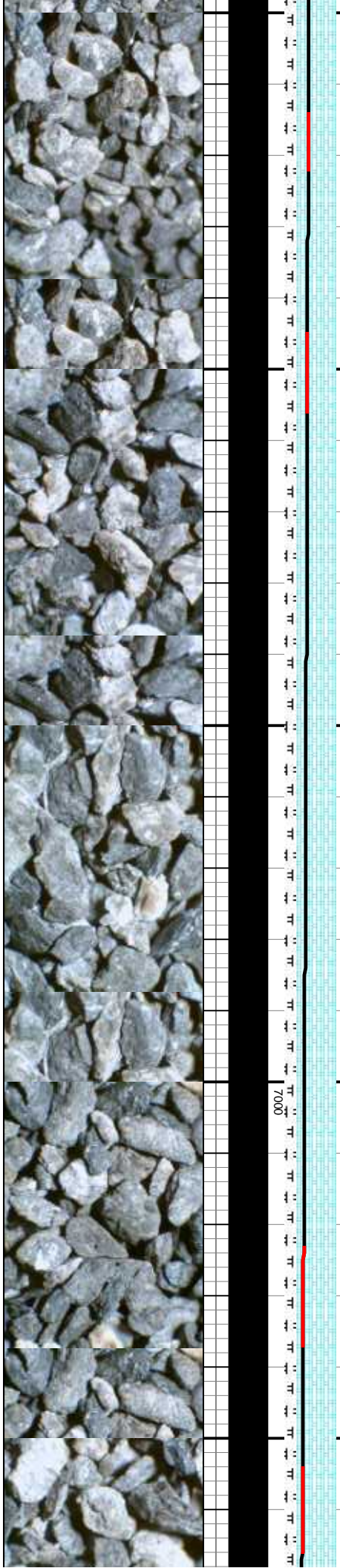


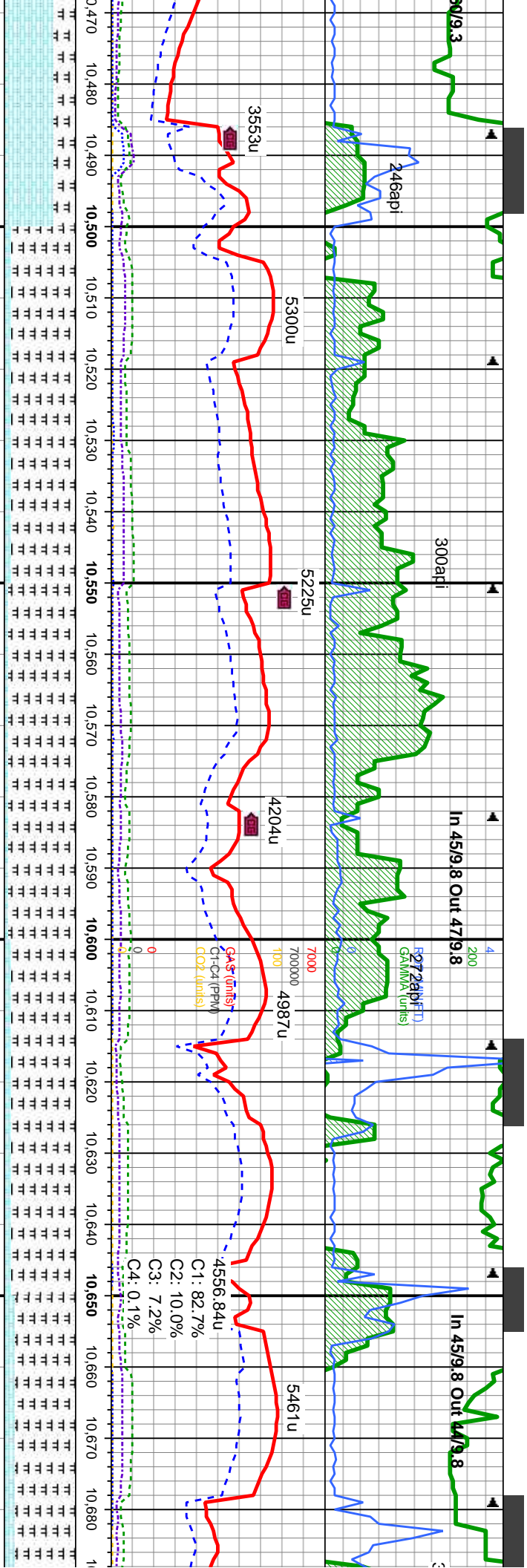
m, sft - firm, occ m txt, v calc; MRL: n, biky-sppty, rthy tr sec cal, tr yel cut, m yel sin.	CHK: lt-m gy, occ wht-erm, sft - firm, occ brit, sbblky, v wxy & sl iam txt, v calc; MRL: dk-m gy occ dkgyblk, firm, biky-sppty, rthy sl silty occ mot tex, vcalc, tr sec cal, tr foss, lt yel flor, fst stmg lt yel cut, m yel sin.	CHK: lt-m gy, occ wht-erm, sft - firm, occ brit, sbblky, v wxy & sl iam txt, v calc; MRL: dk-m gy occ dkgyblk, firm, biky-sppty, rthy sl silty occ mot tex, vcalc, tr sec cal, tr foss, lt yel flor, fst stmg lt yel cut, m yel sin.	CHK: lt-m gy, occ wht-erm, sft - firm, occ brit, sbblky, v wxy & sl iam txt, v calc; MRL: dk-m gy occ dkgyblk, firm, biky-sppty, rthy sl silty occ mot tex, vcalc, tr sec cal, tr foss, lt yel flor, fst stmg lt yel cut, m yel sin.	CHK: lt-m gy, occ wht-erm, sft - firm, occ brit, sbblky, v wxy & sl iam txt, v calc; MRL: dk-m gy occ dkgyblk, firm, biky-sppty, rthy sl silty occ mot tex, vcalc, tr sec cal, tr foss, lt yel flor, fst stmg lt yel cut, m yel sin.
	MD: 10,050 TVD: 6,894.58 Inclination: 89.7 ° Azimuth: 356.8 ° VS: 3,239.4 '	MD: 10,082 TVD: 6,894.61 Inclination: 90.2 ° Azimuth: 357 VS: 3,271.32 '	MD: 10,113 TVD: 6,894.39 Inclination: 90.6 ° Azimuth: 356.8 ° VS: 3,302.25 '	MD: 10,145 TVD: 6,894.03 Inclination: 90.7 ° Azimuth: 356.3 ° VS: 3,334.15 '
	MD: 10,176 TVD: 6,893.81 Inclination: 90.1 ° Azimuth: 357 VS: 3,365.06 '	MD: 10,208 TVD: 6,893.98 Inclination: 89.3 ° Azimuth: 357.9 ° VS: 3,397 '	MD: 10,240 TVD: 6,894.59 Inclination: 88.5 Azimuth: 358.9 ° VS: 3,428.97 '	





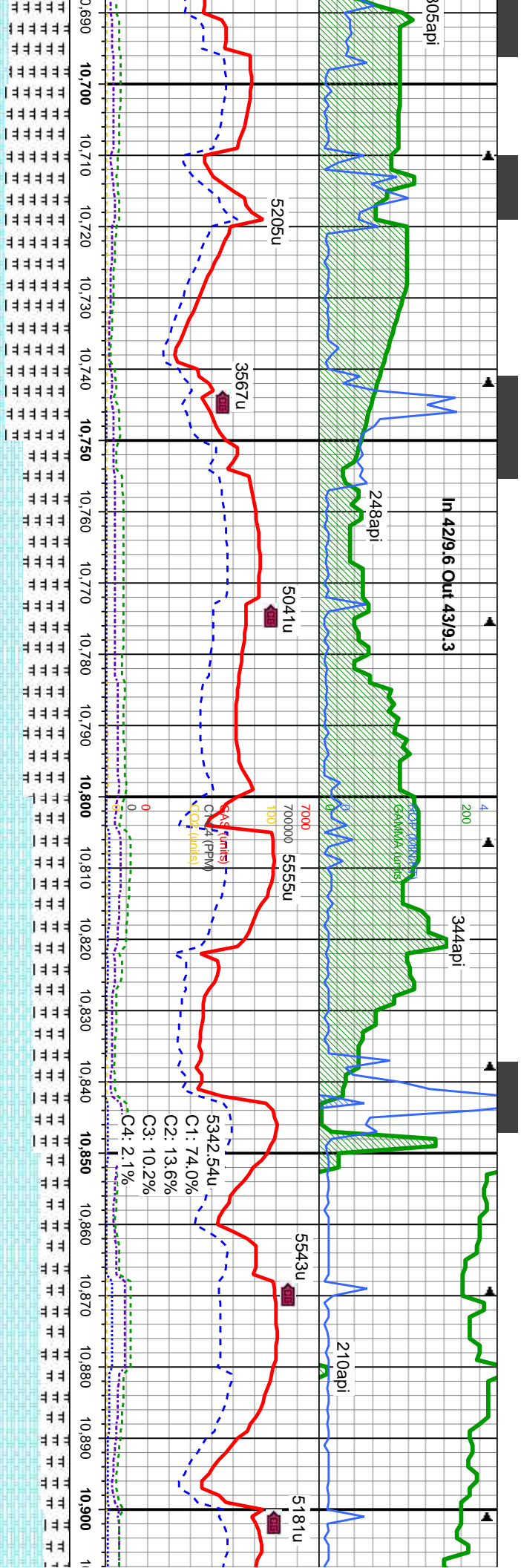
CHK: lt-m gy, occ wht-erm, sft - firm, occ brit, sbblky, v wxy & sl lam txt, occ stri, v calc; MRL: dk-m gy occ dkgyblk, firm, blkly-sbply, rthy sl stly occ mot tex, vcalc, str sec cal, tr foss, lt yel flor, fst sting lt yel cut, m yel str.	CHK: lt-m gy, occ wht-erm, sft - firm, occ brit, sbblky, v wxy & sl lam txt, occ stri, v calc; MRL: dk-m gy occ dkgyblk, firm, blkly-sbply, rthy sl stly occ mot tex, vcalc, str sec cal, tr foss, lt yel flor, fst sting lt yel cut, m yel str.	CHK: lt-m gy, occ wht-erm, sft - firm, occ brit, sbblky, v wxy & sl lam txt, occ stri, v calc; MRL: dk-m gy occ dkgyblk, firm, blkly-sbply, rthy sl stly occ mot tex, vcalc, str sec cal, tr foss, lt yel flor, fst sting lt yel cut, m yel str.	CHK: lt-m gy, occ wht-erm, sft - firm, occ brit, sbblky, v wxy & sl lam txt, occ stri, v calc; MRL: dk-m gy occ dkgyblk, firm, blkly-sbply, rthy sl stly occ mot tex, vcalc, str sec cal, tr foss, lt yel flor, fst sting lt yel cut, m yel str.
MD: 10,271 TVD: 6,895.73 Inclination: 87.3 ° Azimuth: 359.6 ° VS: 3,459.93 '	MD: 10,303 TVD: 6,897.43 Inclination: 86.6 ° Azimuth: 0.9 ° VS: 3,491.88 '	MD: 10,367 TVD: 6,902.12 Inclination: 85.2 ° Azimuth: 0.9 ° VS: 3,555.71 '	MD: 10,430 TVD: 6,907.91 Inclination: 84.5 ° Azimuth: 1 ° VS: 3,618.44 '





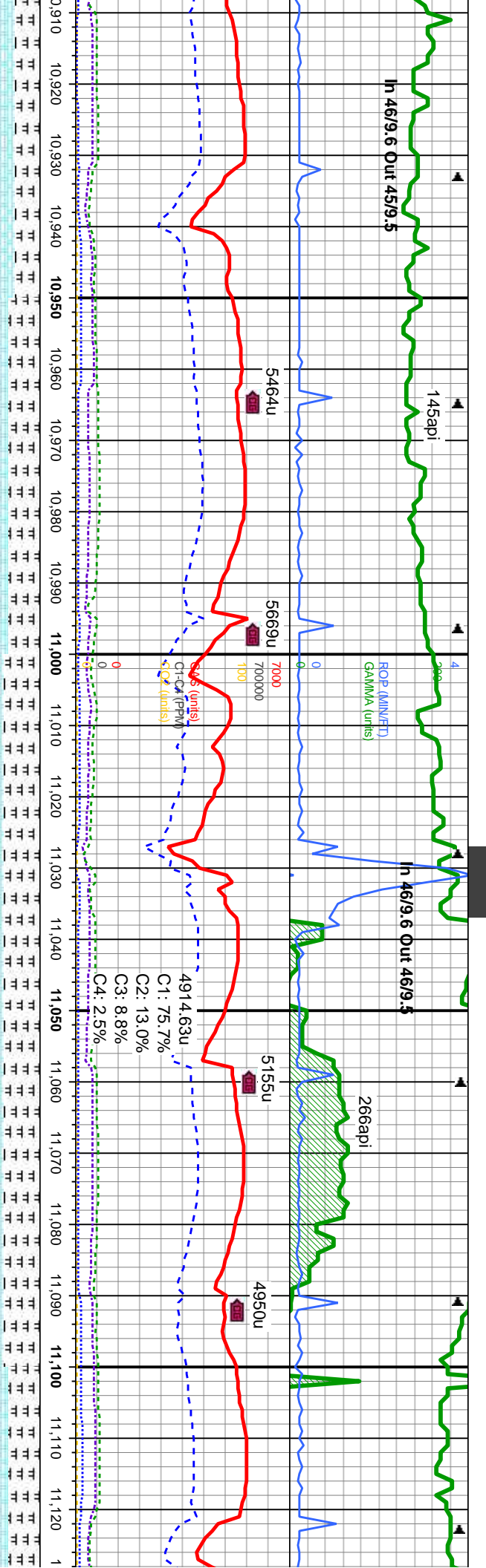
occ wht-frm, sft - frm, occ brit, sblky, v wxy & sl lam txt, occ stri, v calc, MRL: dk-m gy occ dkgyblk, firm, blk- sblpy, rthy sl silty occ mot tex, vcalc, str sec cal, tr foss, lt yel flr, fst sting lt yel cut, m yel stn.	MD: 10,494 TVD: 6,913.16 Inclination: 86.1 ° Azimuth: 2.1 ° VS: 3,682.21	MD: 10,526 TVD: 6,915.25 Inclination: 86.4 ° Azimuth: 2.6 ° VS: 3,714.13	MD: 10,558 TVD: 6,917.32 Inclination: 86.2 ° Azimuth: 2.5 ° VS: 3,746.05	MD: 10,590 TVD: 6,919.49 Inclination: 86 ° Azimuth: 2.3 ° VS: 3,777.97	TVD (ft)
occ wht-frm, sft - frm, occ brit, sblky, v wxy & sl lam txt, occ stri, v calc, MRL: dk-m gy occ dkgyblk, firm, blk- sblpy, rthy sl silty occ mot tex, vcalc, str sec cal, tr foss, lt yel flr, fst sting lt yel cut, m yel stn.	MD: 10,633 TVD: 6,923.17 Inclination: 87.4 ° Azimuth: 1.9 ° VS: 3,805.57	MD: 10,653 TVD: 6,924.11 Inclination: 87.4 ° Azimuth: 1.9 ° VS: 3,837.11	MD: 10,685 TVD: 6,924.11 Inclination: 87.4 ° Azimuth: 1.9 ° VS: 3,837.11	MD: 10,685 TVD: 6,924.11 Inclination: 87.4 ° Azimuth: 1.9 ° VS: 3,837.11	TVD (ft)





CHK: lt-m gy, occ wht-crm, sft - frm, occ brit, sbblky, v wxy & sl lam txt, occ stri, v calc; MRL: dk-m gy occ dkgyblk, firm, blkly-sbply, rthy sl sily occ mot tex, vcalc, str sec cal, tr foss, tr bent wi dissim pyr, lt yel flor, fst stmg lt yel cut, m yel stn.	CHK: lt-m gy, occ wht-crm, sft - frm, occ brit, sbblky, v wxy & sl lam txt, occ stri, v calc; MRL: dk-m gy occ dkgyblk, firm, blkly-sbply, rthy sl sily occ mot tex, vcalc, str sec cal, tr foss, tr bent wi dissim pyr, lt yel flor, fst stmg lt yel cut, m yel stn.	CHK: lt-m gy, occ wht-crm, sft - frm, occ brit, sbblky, v wxy & sl lam txt, occ stri, v calc; MRL: dk-m gy occ dkgyblk, firm, blkly-sbply, rthy sl sily occ mot tex, vcalc, str sec cal, tr foss, tr bent wi dissim pyr, lt yel flor, fst stmg lt yel cut, m yel stn.	CHK: lt-m gy, occ wht-crm, sft - frm, occ brit, sbblky, v wxy & sl lam txt, occ stri, v calc; MRL: dk-m gy occ dkgyblk, firm, blkly-sbply, rthy sl sily occ mot tex, vcalc, str sec cal, tr foss, tr bent wi dissim pyr, lt yel flor, fst stmg lt yel cut, m yel stn.	CHK: lt-m gy, occ wht-crm, sft - frm, occ brit, sbblky, v wxy & sl lam txt, occ stri, v calc; MRL: dk-m gy occ dkgyblk, firm, blkly-sbply, rthy sl sily occ mot tex, vcalc, str sec cal, tr foss, tr bent wi dissim pyr, lt yel flor, fst stmg lt yel cut, m yel stn.
MD: 10,717 TVD: 6,924.65 Inclination: 90.5 Azimuth: 2.6 VS: 3,868.78	MD: 10,749 TVD: 6,924.06 Inclination: 91.6 Azimuth: 1.9 VS: 3,900.38	MD: 10,781 TVD: 6,922.89 Inclination: 92.6 Azimuth: 2.5 VS: 3,931.96	MD: 10,812 TVD: 6,921.46 Inclination: 92.7 Azimuth: 2.5 VS: 3,962.52	MD: 10,844 TVD: 6,920.25 Inclination: 91.6 Azimuth: 2.1 VS: 3,994.1
VS: 3,868.78	VS: 3,900.38	VS: 3,931.96	VS: 3,962.52	VS: 3,994.1

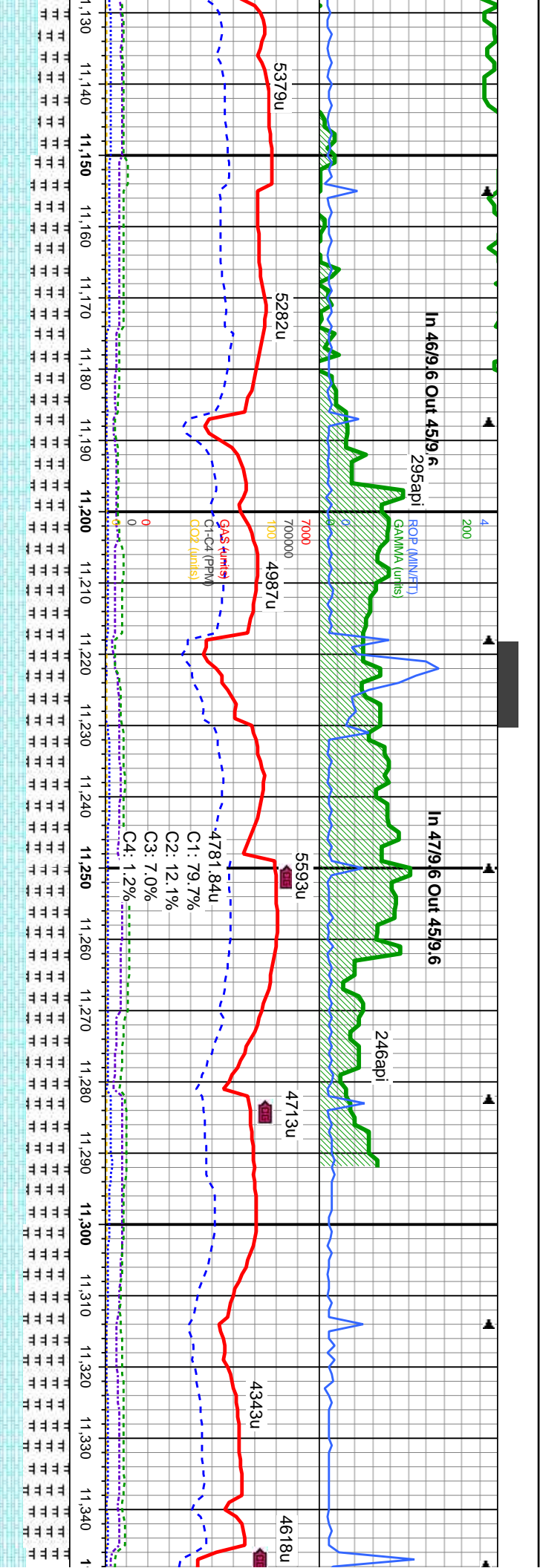




10,910	10,920	10,930	10,940	10,950	10,960	10,970	10,980	10,990	11,000	11,010	11,020	11,030	11,040	11,050	11,060	11,070	11,080	11,090	11,100	11,110	11,120
It-m gy, occ wht-crm, sft - frm, occ brit, sbblky, v wxy & sl lam txt, occ stri, v calc: MRL: dk-m gy occ dkgyblk, firm, blkysbply, rthy sl stly occ mot tex, vcalc, str sec cal, tr foss, tr bent wi dissim pyr, lt yel flor, fst stmg lt yel cut, m yel stn.																					
CHK: It-m gy, occ wht-crm, sft - frm, occ brit, sbblky, v wxy & sl lam txt, occ stri, v calc: MRL: dk-m gy occ dkgyblk, firm, blkysbply, rthy sl stly occ mot tex, vcalc, str sec cal, tr foss, v tr bent wi dissim pyr, lt yel flor, fst stmg lt yel cut, m yel stn.																					
CHK: It-m gy, occ wht-crm, sft - frm, occ brit, sbblky, v wxy & sl lam txt, occ stri, v calc: MRL: dk-m gy occ dkgyblk, firm, blkysbply, rthy sl stly occ mot tex, vcalc, str sec cal, tr foss, v tr bent wi dissim pyr, lt yel flor, fst stmg lt yel cut, m yel stn.																					

10,910	10,920	10,930	10,940	10,950	10,960	10,970	10,980	10,990	11,000	11,010	11,020	11,030	11,040	11,050	11,060	11,070	11,080	11,090	11,100	11,110	11,120
It-m gy, occ wht-crm, sft - frm, occ brit, sbblky, v wxy & sl lam txt, occ stri, v calc: MRL: dk-m gy occ dkgyblk, firm, blkysbply, rthy sl stly occ mot tex, vcalc, str sec cal, tr foss, tr bent wi dissim pyr, lt yel flor, fst stmg lt yel cut, m yel stn.																					
CHK: It-m gy, occ wht-crm, sft - frm, occ brit, sbblky, v wxy & sl lam txt, occ stri, v calc: MRL: dk-m gy occ dkgyblk, firm, blkysbply, rthy sl stly occ mot tex, vcalc, str sec cal, tr foss, v tr bent wi dissim pyr, lt yel flor, fst stmg lt yel cut, m yel stn.																					
CHK: It-m gy, occ wht-crm, sft - frm, occ brit, sbblky, v wxy & sl lam txt, occ stri, v calc: MRL: dk-m gy occ dkgyblk, firm, blkysbply, rthy sl stly occ mot tex, vcalc, str sec cal, tr foss, v tr bent wi dissim pyr, lt yel flor, fst stmg lt yel cut, m yel stn.																					





firm, sft - frm, occ lam txt, occ stri, v dkgyblk, firm, blk- not tex, vcalc, str t w/ dissim pyr, lt yel flr, fst sting lt yel cut, m yel str.	CHK: lt-m gy, occ wht-crm, sft - frm, occ brit, sbblk, v wxy & sl lam txt, occ stri, v calc: MRL: dk-m gy occ dkgyblk, firm, blk- sblply, rthy sl silty occ mot tex, vcalc, str sec cal, tr foss, v tr bent w/ dissim pyr, lt yel flr, fst sting lt yel cut, m yel str.	CHK: lt-m gy, occ wht-crm, sft - frm, occ brit, sbblk, v wxy & sl lam txt, occ stri, v calc: MRL: dk-m gy occ dkgyblk, firm, blk- sblply, rthy sl silty occ mot tex, vcalc, str sec cal, tr foss, v tr bent w/ dissim pyr, lt yel flr, fst sting lt yel cut, m yel str.	CHK: lt-m gy, occ wht-crm, sft - frm, occ brit, sbblk, v wxy & sl lam txt, occ stri, v calc: MRL: dk-m gy occ dkgyblk, firm, blk- sblply, rthy sl silty occ mot tex, vcalc, str sec cal, tr foss, v tr bent w/ dissim pyr, lt yel flr, fst sting lt yel cut, m yel str.	CHK: lt-m gy, occ wht-crm, sft - frm, occ brit, sbblk, v wxy & sl lam txt, occ stri, v calc: MRL: dk-m gy occ dkgyblk, firm, blk- sblply, rthy sl silty occ mot tex, vcalc, str sec cal, tr foss, v tr bent w/ dissim pyr, lt yel flr, fst sting lt yel cut, m yel str.
MD: 11,161 TVD: 6,911.99 Inclination: 92.1 Azimuth: 1.2 VS: 4,307.23	MD: 11,193 TVD: 6,910.79 Inclination: 92.2 Azimuth: 0.9 VS: 4,338.91	MD: 11,225 TVD: 6,909.75 Inclination: 91.5 Azimuth: 0.2 VS: 4,370.63	MD: 11,257 TVD: 6,908.92 Inclination: 91.5 Azimuth: 359.6 VS: 4,402.4	MD: 11,289 TVD: 6,908.02 Inclination: 91.7 Azimuth: 359.8 VS: 4,434.19
VS: 4,307.23	VS: 4,338.91	VS: 4,370.63	VS: 4,402.4	VS: 4,434.19

