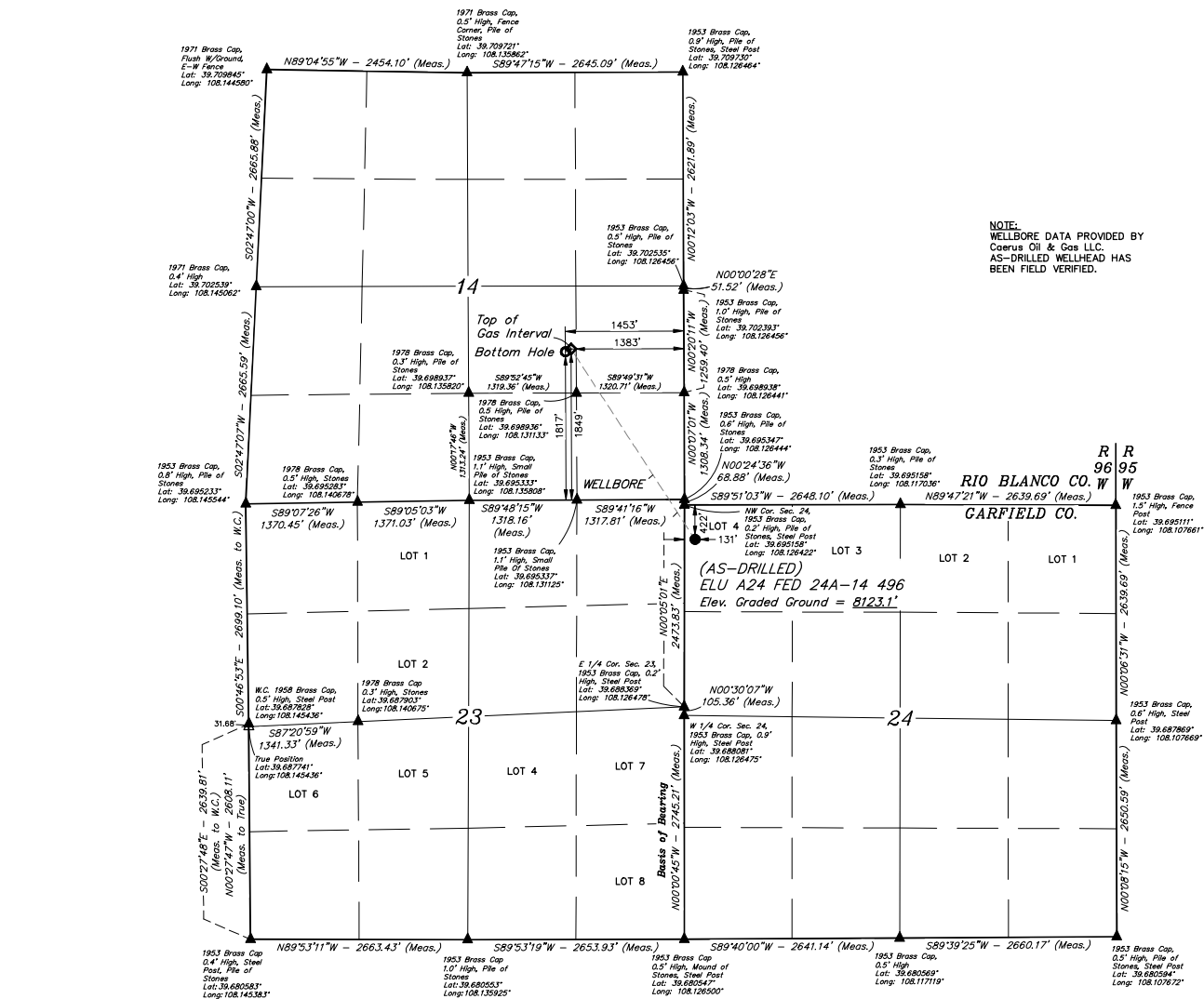


**LEGEND:**

- = SURFACE LOCATION.
- ◆ = TOP OF GAS INTERVAL.
- = BOTTOM HOLE.
- ▲ = SECTION CORNERS LOCATED. (NAD 83)
- △ = SECTION CORNERS RE-ESTABLISHED.  
(Not Set on Ground.) (NAD 83)

**NOTE:**  
Distances referenced  
on plat to section lines  
are perpendicular.

**NOTE:**  
WELLBORE DATA PROVIDED BY  
Caerus Oil & Gas LLC.  
AS-DRILLED WELLHEAD HAS  
BEEN FIELD VERIFIED.



**PDOP = 1.7**



<b>NAD 83 (SURFACE LOCATION)</b>	<b>NAD 83 (TOP OF GAS INTERVAL)</b>	<b>NAD 83 (BOTTOM HOLE)</b>
LATITUDE = 39°41'38.00" (39.694001)	LATITUDE = 39°42'01.58" (39.700423)	LATITUDE = 39°42'01.16" (39.700323)
LONGITUDE = 108°07'33.54" (108.125982)	LONGITUDE = 108°07'52.89" (108.131359)	LONGITUDE = 108°07'53.80" (108.131610)
<b>NAD 27 (SURFACE LOCATION)</b>	<b>NAD 27 (TOP OF GAS INTERVAL)</b>	<b>NAD 27 (BOTTOM HOLE)</b>
LATITUDE = 39°41'38.49" (39.694026)	LATITUDE = 39°42'01.57" (39.700437)	LATITUDE = 39°42'01.25" (39.700348)
LONGITUDE = 108°07'31.25" (108.125347)	LONGITUDE = 108°07'56.60" (108.130723)	LONGITUDE = 108°07'51.51" (108.130975)
<b>UTM NAD 27 (ZONE 11)</b>	<b>UTM NAD 27 (ZONE 11)</b>	<b>UTM NAD 27 (ZONE 11)</b>
N: 14427593.03 E: 2449131.93	N: 14429881.44 E: 2447544.38	N: 14429848.82 E: 2447474.77

**BASIS OF BEARINGS**

BEARINGS ARE BASED ON THE ASSUMPTION THAT THE WEST LINE OF THE SOUTHWEST 1/4 OF SECTION 24 BEARS N00°00'45"W. MONUMENTS DESCRIBED HEREIN.

### BASIS OF ELEVATION

BENCH MARK (1179) LOCATED IN THE NE 1/4 OF SECTION 35, T4S, R98W, 6th P.M., TAKEN FROM THE BULL FORK QUADRANGLE, COLORADO, 7.5 MINUTE SERIES, (TOPOGRAPHIC MAPS PUBLISHED BY THE UNITED STATES DEPARTMENT OF THE INTERIOR, GEOLOGICAL SURVEY. SAID ELEVATION IS MARKED AS BEING 8535 FEET.

UELS, LLC

Corporate Office \* 85 South 200 East  
Vernal, UT 84078 \* (435) 789-1017



**SINAI**  
ENGINEERING & LAND SURVEYING INC.



CERTIFICATE

THIS IS TO CERTIFY THAT THE ABOVE PLAT WAS PREPARED FROM SUCH NOTES OF ACTUAL SURVEYS MADE BY ME OR UNDER MY SUPERVISION, AND THAT THE LOCATION HAS BEEN STATIONED ON THE GROUND AS SHOWN ON THE PLAT AND THAT THE SAME ARE TRUE AND CORRECT TO THE BEST OF MY KNOWLEDGE AND BELIEF.

REGISTERED LAND SURVEYOR  
REGISTRATION NO. 35270  
STATE OF COLORADO

**Caerus Oil & Gas LLC**

(AS-DRILLED) ELU A24 FED 24A-14 496  
LOT 4, SECTION 24, T4S, R96W, 6th P.M.  
GARFIELD COUNTY, COLORADO

SURVEYED BY	JOHN FLOYD, M.P.	02-18-20	SCALE
DRAWN BY	T.L.L.	02-20-20	1" = 1000'

**AS-DRILLED WELL LOCATION PLAT**