



BAYSWATER

Bayswater Exploration & Production, LLC

DJ Basin

Mead 9-E Pad

MEAD 11

Wellbore #1

Plan: Design #1

Standard Planning Report

05 March, 2020



Pad Name: Mead 9-E Pad
Well Name: MEAD 11
Ground Level: 4909.0
SHL Latitude: 40° 35' 33.410 N
SHL Longitude: 104° 46' 28.013 W

SECTION DETAILS

Sec	MD	Inc	Azi	TVD	+N/-S	+E/-W	Dleg	TFace	VSec	Target
1	0.0	0.00	0.00	0.0	0.0	0.0	0.00	0.00	0.0	
2	1500.0	0.00	0.00	1500.0	0.0	0.0	0.00	0.00	0.0	
3	1914.7	8.29	147.20	1913.3	-25.2	16.2	2.00	147.20	-15.0	
4	6161.6	8.29	147.20	6115.8	-540.2	348.1	0.00	0.00	-321.2	
5	6576.4	0.00	270.47	6529.0	-565.4	364.4	2.00	180.00	-336.2	
6	6776.4	0.00	270.47	6729.0	-565.4	364.4	0.00	0.00	-336.2	
7	7676.4	90.00	270.47	7302.0	-560.7	-208.6	10.00	0.00	235.8	MEAD 11 LP
8	17286.8	90.00	270.47	7302.0	-481.8	-9818.7	0.00	0.00	9830.5	MEAD 11 BHL

DESIGN TARGET DETAILS

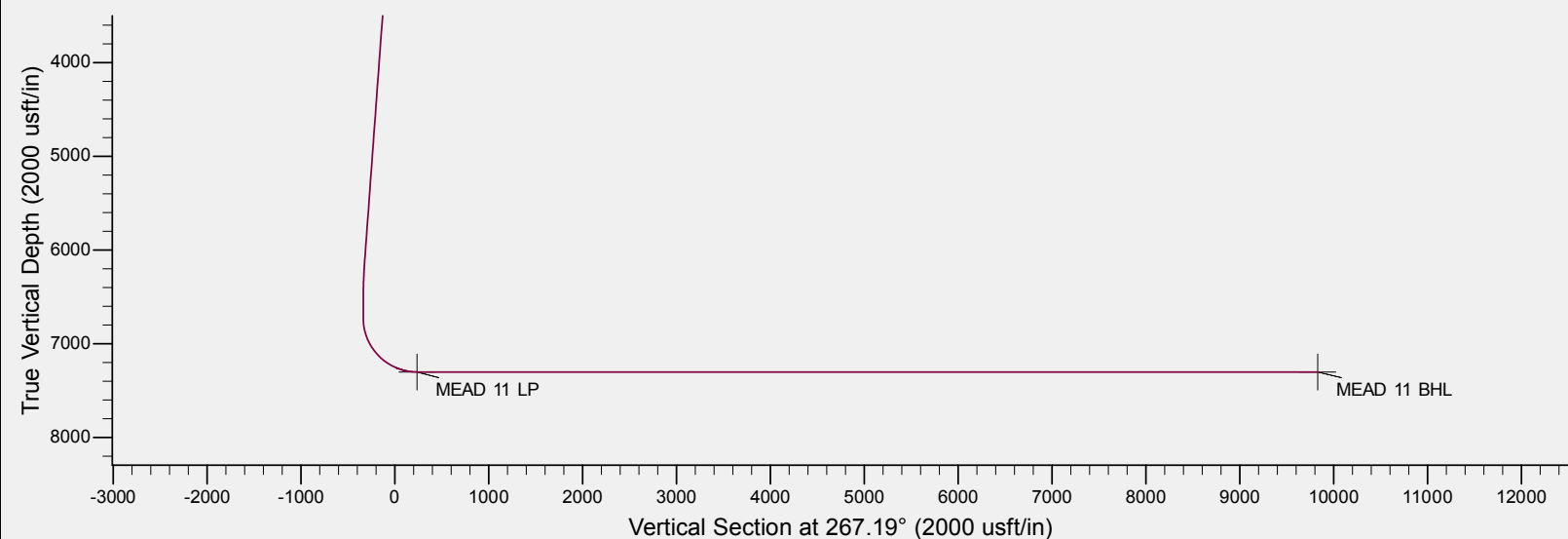
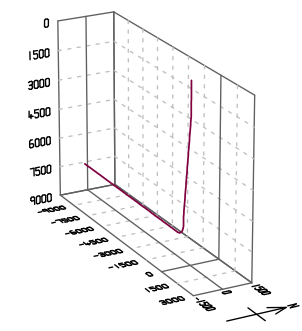
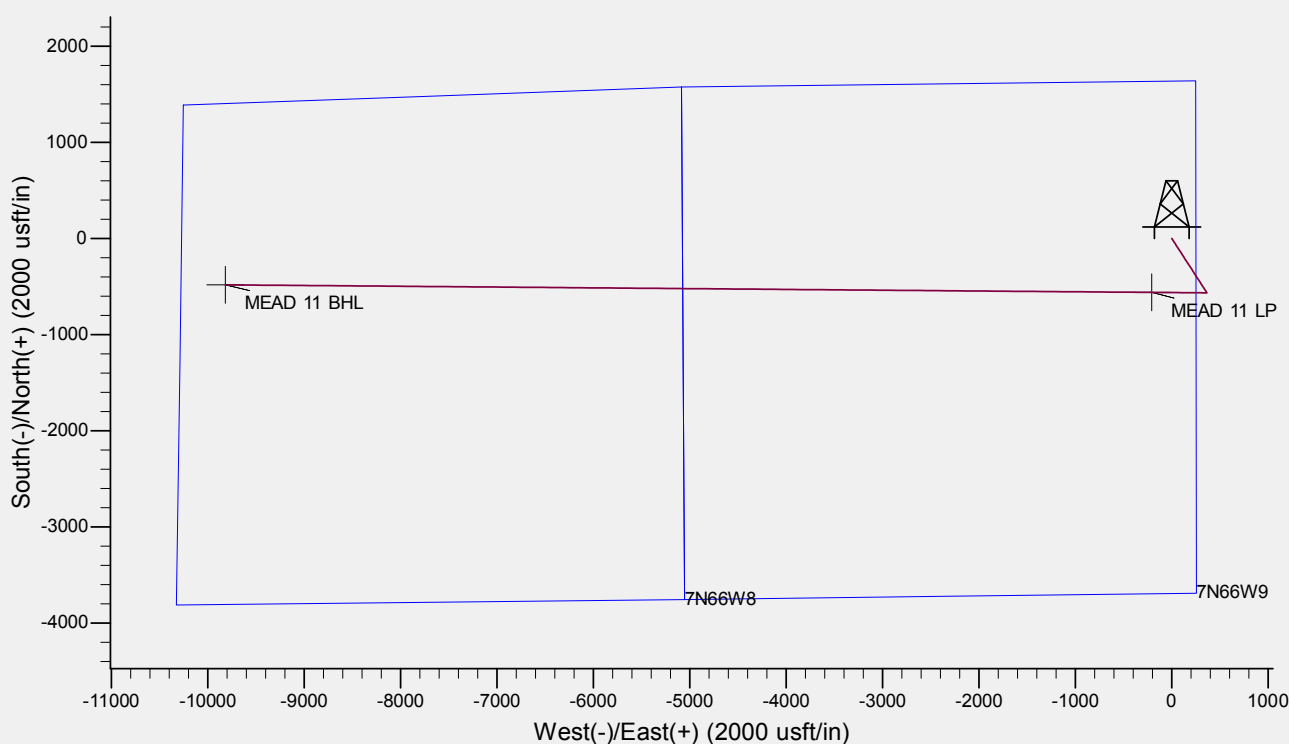
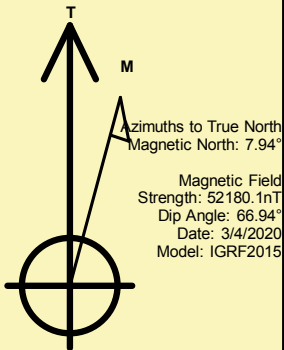
Name	TVD	+N/-S	+E/-W	Northing	Easting	Latitude	Longitude	Shape
MEAD 11 LP	7302.0	-560.7	-208.6	1458992.66	3201293.38	40° 35' 27.870 N	104° 46' 30.716 W	Point
MEAD 11 BHL	7302.0	-481.8	-9818.7	1458992.86	3191682.95	40° 35' 28.630 N	104° 48' 35.287 W	Point
		- plan hits target center						

REFERENCE INFORMATION

Co-ordinate (N/E) Reference: Well MEAD 11, True North
Vertical (TVD) Reference: KB @ 4929.0usft (Original Well Elev)
Section (VS) Reference: Slot - (0.0N, 0.0E)
Measured Depth Reference: KB @ 4929.0usft (Original Well Elev)
Calculation Method: Minimum Curvature

CASING DETAILS

No casing data is available



Database:	EDM	Local Co-ordinate Reference:	Well MEAD 11
Company:	Bayswater Exploration & Production, LLC	TVD Reference:	KB @ 4929.0usft (Original Well Elev)
Project:	DJ Basin	MD Reference:	KB @ 4929.0usft (Original Well Elev)
Site:	Mead 9-E Pad	North Reference:	True
Well:	MEAD 11	Survey Calculation Method:	Minimum Curvature
Wellbore:	Wellbore #1		
Design:	Design #1		

Project	DJ Basin, DJ Basin		
Map System:	US State Plane 1983	System Datum:	Mean Sea Level
Geo Datum:	North American Datum 1983		
Map Zone:	Colorado Northern Zone		

Site		Mead 9-E Pad			
Site Position:		Northing:	1,459,659.95 usft	Latitude:	40° 35' 34.447 N
From:	Lat/Long	Easting:	3,201,496.50 usft	Longitude:	104° 46' 28.013 W
Position Uncertainty:	0.0 usft	Slot Radius:	13-3/16 "	Grid Convergence:	0.47 °

Well	MEAD 11					
Well Position	+N/-S	-104.9 usft	Northing:	1,459,555.03 usft	Latitude:	40° 35' 33.410 N
	+E/-W	0.0 usft	Easting:	3,201,497.35 usft	Longitude:	104° 46' 28.013 W
Position Uncertainty		0.0 usft	Wellhead Elevation:		Ground Level:	4,909.0 usft

Wellbore	Wellbore #1				
Magnetics	Model Name	Sample Date	Declination (°)	Dip Angle (°)	Field Strength (nT)
	IGRF2015	3/4/2020	7.94	66.94	52,180.10039335

Design	Design #1			
Audit Notes:				
Version:	Phase:	PLAN	Tie On Depth:	0.0
Vertical Section:	Depth From (TVD) (usft)	+N/-S (usft)	+E/-W (usft)	Direction (°)
	0.0	0.0	0.0	267.19

Plan Survey Tool Program	Date	3/4/2020		
Depth From (usft)	Depth To (usft)	Survey (Wellbore)	Tool Name	Remarks
1	0.0	17,286.8	Design #1 (Wellbore #1)	MWD
				OWSG MWD - Standard

Plan Sections										
Measured Depth (usft)	Inclination (°)	Azimuth (°)	Vertical Depth (usft)	+N/-S (usft)	+E/-W (usft)	Dogleg Rate (°/100usft)	Build Rate (°/100usft)	Turn Rate (°/100usft)	TFO (°)	Target
0.0	0.00	0.00	0.0	0.0	0.0	0.00	0.00	0.00	0.00	
1,500.0	0.00	0.00	1,500.0	0.0	0.0	0.00	0.00	0.00	0.00	
1,914.7	8.29	147.20	1,913.3	-25.2	16.2	2.00	2.00	0.00	147.20	
6,161.6	8.29	147.20	6,115.8	-540.2	348.1	0.00	0.00	0.00	0.00	
6,576.4	0.00	270.47	6,529.0	-565.4	364.4	2.00	-2.00	0.00	180.00	
6,776.4	0.00	270.47	6,729.0	-565.4	364.4	0.00	0.00	0.00	0.00	
7,676.4	90.00	270.47	7,302.0	-560.7	-208.6	10.00	10.00	0.00	0.00	MEAD 11 LP
17,286.8	90.00	270.47	7,302.0	-481.8	-9,818.7	0.00	0.00	0.00	0.00	MEAD 11 BHL



Database:	EDM	Local Co-ordinate Reference:	Well MEAD 11
Company:	Bayswater Exploration & Production, LLC	TVD Reference:	KB @ 4929.0usft (Original Well Elev)
Project:	DJ Basin	MD Reference:	KB @ 4929.0usft (Original Well Elev)
Site:	Mead 9-E Pad	North Reference:	True
Well:	MEAD 11	Survey Calculation Method:	Minimum Curvature
Wellbore:	Wellbore #1		
Design:	Design #1		

Planned Survey									
Measured Depth (usft)	Inclination (°)	Azimuth (°)	Vertical Depth (usft)	+N/-S (usft)	+E/-W (usft)	Vertical Section (usft)	Dogleg Rate (°/100usft)	Build Rate (°/100usft)	Turn Rate (°/100usft)
0.0	0.00	0.00	0.0	0.0	0.0	0.0	0.00	0.00	0.00
100.0	0.00	0.00	100.0	0.0	0.0	0.0	0.00	0.00	0.00
200.0	0.00	0.00	200.0	0.0	0.0	0.0	0.00	0.00	0.00
300.0	0.00	0.00	300.0	0.0	0.0	0.0	0.00	0.00	0.00
400.0	0.00	0.00	400.0	0.0	0.0	0.0	0.00	0.00	0.00
500.0	0.00	0.00	500.0	0.0	0.0	0.0	0.00	0.00	0.00
600.0	0.00	0.00	600.0	0.0	0.0	0.0	0.00	0.00	0.00
700.0	0.00	0.00	700.0	0.0	0.0	0.0	0.00	0.00	0.00
800.0	0.00	0.00	800.0	0.0	0.0	0.0	0.00	0.00	0.00
900.0	0.00	0.00	900.0	0.0	0.0	0.0	0.00	0.00	0.00
1,000.0	0.00	0.00	1,000.0	0.0	0.0	0.0	0.00	0.00	0.00
1,100.0	0.00	0.00	1,100.0	0.0	0.0	0.0	0.00	0.00	0.00
1,200.0	0.00	0.00	1,200.0	0.0	0.0	0.0	0.00	0.00	0.00
1,300.0	0.00	0.00	1,300.0	0.0	0.0	0.0	0.00	0.00	0.00
1,400.0	0.00	0.00	1,400.0	0.0	0.0	0.0	0.00	0.00	0.00
1,500.0	0.00	0.00	1,500.0	0.0	0.0	0.0	0.00	0.00	0.00
1,600.0	2.00	147.20	1,600.0	-1.5	0.9	-0.9	2.00	2.00	0.00
1,700.0	4.00	147.20	1,699.8	-5.9	3.8	-3.5	2.00	2.00	0.00
1,800.0	6.00	147.20	1,799.5	-13.2	8.5	-7.8	2.00	2.00	0.00
1,900.0	8.00	147.20	1,898.7	-23.4	15.1	-13.9	2.00	2.00	0.00
1,914.7	8.29	147.20	1,913.3	-25.2	16.2	-15.0	2.00	2.00	0.00
2,000.0	8.29	147.20	1,997.7	-35.5	22.9	-21.1	0.00	0.00	0.00
2,100.0	8.29	147.20	2,096.6	-47.7	30.7	-28.3	0.00	0.00	0.00
2,200.0	8.29	147.20	2,195.6	-59.8	38.5	-35.6	0.00	0.00	0.00
2,300.0	8.29	147.20	2,294.5	-71.9	46.3	-42.8	0.00	0.00	0.00
2,400.0	8.29	147.20	2,393.5	-84.0	54.2	-50.0	0.00	0.00	0.00
2,500.0	8.29	147.20	2,492.4	-96.2	62.0	-57.2	0.00	0.00	0.00
2,600.0	8.29	147.20	2,591.4	-108.3	69.8	-64.4	0.00	0.00	0.00
2,700.0	8.29	147.20	2,690.3	-120.4	77.6	-71.6	0.00	0.00	0.00
2,800.0	8.29	147.20	2,789.3	-132.5	85.4	-78.8	0.00	0.00	0.00
2,900.0	8.29	147.20	2,888.2	-144.7	93.2	-86.0	0.00	0.00	0.00
3,000.0	8.29	147.20	2,987.2	-156.8	101.0	-93.2	0.00	0.00	0.00
3,100.0	8.29	147.20	3,086.2	-168.9	108.9	-100.5	0.00	0.00	0.00
3,200.0	8.29	147.20	3,185.1	-181.0	116.7	-107.7	0.00	0.00	0.00
3,300.0	8.29	147.20	3,284.1	-193.2	124.5	-114.9	0.00	0.00	0.00
3,400.0	8.29	147.20	3,383.0	-205.3	132.3	-122.1	0.00	0.00	0.00
3,500.0	8.29	147.20	3,482.0	-217.4	140.1	-129.3	0.00	0.00	0.00
3,600.0	8.29	147.20	3,580.9	-229.6	147.9	-136.5	0.00	0.00	0.00
3,700.0	8.29	147.20	3,679.9	-241.7	155.8	-143.7	0.00	0.00	0.00
3,800.0	8.29	147.20	3,778.8	-253.8	163.6	-150.9	0.00	0.00	0.00
3,900.0	8.29	147.20	3,877.8	-265.9	171.4	-158.1	0.00	0.00	0.00
4,000.0	8.29	147.20	3,976.7	-278.1	179.2	-165.4	0.00	0.00	0.00
4,100.0	8.29	147.20	4,075.7	-290.2	187.0	-172.6	0.00	0.00	0.00
4,200.0	8.29	147.20	4,174.6	-302.3	194.8	-179.8	0.00	0.00	0.00
4,300.0	8.29	147.20	4,273.6	-314.4	202.6	-187.0	0.00	0.00	0.00
4,400.0	8.29	147.20	4,372.6	-326.6	210.5	-194.2	0.00	0.00	0.00
4,500.0	8.29	147.20	4,471.5	-338.7	218.3	-201.4	0.00	0.00	0.00
4,600.0	8.29	147.20	4,570.5	-350.8	226.1	-208.6	0.00	0.00	0.00
4,700.0	8.29	147.20	4,669.4	-362.9	233.9	-215.8	0.00	0.00	0.00
4,800.0	8.29	147.20	4,768.4	-375.1	241.7	-223.0	0.00	0.00	0.00
4,900.0	8.29	147.20	4,867.3	-387.2	249.5	-230.3	0.00	0.00	0.00
5,000.0	8.29	147.20	4,966.3	-399.3	257.4	-237.5	0.00	0.00	0.00
5,100.0	8.29	147.20	5,065.2	-411.4	265.2	-244.7	0.00	0.00	0.00
5,200.0	8.29	147.20	5,164.2	-423.6	273.0	-251.9	0.00	0.00	0.00



Database:	EDM	Local Co-ordinate Reference:	Well MEAD 11
Company:	Bayswater Exploration & Production, LLC	TVD Reference:	KB @ 4929.0usft (Original Well Elev)
Project:	DJ Basin	MD Reference:	KB @ 4929.0usft (Original Well Elev)
Site:	Mead 9-E Pad	North Reference:	True
Well:	MEAD 11	Survey Calculation Method:	Minimum Curvature
Wellbore:	Wellbore #1		
Design:	Design #1		

Planned Survey									
Measured Depth (usft)	Inclination (°)	Azimuth (°)	Vertical Depth (usft)	+N/-S (usft)	+E/-W (usft)	Vertical Section (usft)	Dogleg Rate (°/100usft)	Build Rate (°/100usft)	Turn Rate (°/100usft)
5,300.0	8.29	147.20	5,263.1	-435.7	280.8	-259.1	0.00	0.00	0.00
5,400.0	8.29	147.20	5,362.1	-447.8	288.6	-266.3	0.00	0.00	0.00
5,500.0	8.29	147.20	5,461.0	-460.0	296.4	-273.5	0.00	0.00	0.00
5,600.0	8.29	147.20	5,560.0	-472.1	304.2	-280.7	0.00	0.00	0.00
5,700.0	8.29	147.20	5,659.0	-484.2	312.1	-287.9	0.00	0.00	0.00
5,800.0	8.29	147.20	5,757.9	-496.3	319.9	-295.2	0.00	0.00	0.00
5,900.0	8.29	147.20	5,856.9	-508.5	327.7	-302.4	0.00	0.00	0.00
6,000.0	8.29	147.20	5,955.8	-520.6	335.5	-309.6	0.00	0.00	0.00
6,100.0	8.29	147.20	6,054.8	-532.7	343.3	-316.8	0.00	0.00	0.00
6,161.6	8.29	147.20	6,115.8	-540.2	348.1	-321.2	0.00	0.00	0.00
6,200.0	7.53	147.20	6,153.8	-544.6	351.0	-323.9	2.00	-2.00	0.00
6,300.0	5.53	147.20	6,253.1	-554.2	357.2	-329.6	2.00	-2.00	0.00
6,400.0	3.53	147.20	6,352.8	-560.8	361.4	-333.5	2.00	-2.00	0.00
6,500.0	1.53	147.20	6,452.7	-564.5	363.8	-335.7	2.00	-2.00	0.00
6,576.4	0.00	270.47	6,529.0	-565.4	364.4	-336.2	2.00	-2.00	0.00
6,600.0	0.00	0.00	6,552.7	-565.4	364.4	-336.2	0.00	0.00	0.00
6,700.0	0.00	0.00	6,652.7	-565.4	364.4	-336.2	0.00	0.00	0.00
6,776.4	0.00	270.47	6,729.0	-565.4	364.4	-336.2	0.00	0.00	0.00
6,800.0	2.36	270.47	6,752.7	-565.4	363.9	-335.7	10.00	10.00	0.00
6,900.0	12.36	270.47	6,851.7	-565.3	351.1	-323.0	10.00	10.00	0.00
7,000.0	22.36	270.47	6,947.0	-565.0	321.3	-293.2	10.00	10.00	0.00
7,100.0	32.36	270.47	7,035.7	-564.6	275.4	-247.4	10.00	10.00	0.00
7,200.0	42.36	270.47	7,115.1	-564.1	214.8	-186.9	10.00	10.00	0.00
7,300.0	52.36	270.47	7,182.8	-563.5	141.3	-113.5	10.00	10.00	0.00
7,400.0	62.36	270.47	7,236.6	-562.9	57.2	-29.5	10.00	10.00	0.00
7,500.0	72.36	270.47	7,275.1	-562.1	-35.0	62.5	10.00	10.00	0.00
7,600.0	82.36	270.47	7,296.9	-561.3	-132.4	159.8	10.00	10.00	0.00
7,676.4	90.00	270.47	7,302.0	-560.7	-208.6	235.8	10.00	10.00	0.00
MEAD 11 LP									
7,700.0	90.00	270.47	7,302.0	-560.5	-232.2	259.4	0.00	0.00	0.00
7,800.0	90.00	270.47	7,302.0	-559.7	-332.2	359.2	0.00	0.00	0.00
7,900.0	90.00	270.47	7,302.0	-558.8	-432.2	459.1	0.00	0.00	0.00
8,000.0	90.00	270.47	7,302.0	-558.0	-532.2	558.9	0.00	0.00	0.00
8,100.0	90.00	270.47	7,302.0	-557.2	-632.2	658.7	0.00	0.00	0.00
8,200.0	90.00	270.47	7,302.0	-556.4	-732.2	758.6	0.00	0.00	0.00
8,300.0	90.00	270.47	7,302.0	-555.6	-832.2	858.4	0.00	0.00	0.00
8,400.0	90.00	270.47	7,302.0	-554.7	-932.2	958.3	0.00	0.00	0.00
8,500.0	90.00	270.47	7,302.0	-553.9	-1,032.2	1,058.1	0.00	0.00	0.00
8,600.0	90.00	270.47	7,302.0	-553.1	-1,132.2	1,157.9	0.00	0.00	0.00
8,700.0	90.00	270.47	7,302.0	-552.3	-1,232.2	1,257.8	0.00	0.00	0.00
8,800.0	90.00	270.47	7,302.0	-551.5	-1,332.2	1,357.6	0.00	0.00	0.00
8,900.0	90.00	270.47	7,302.0	-550.6	-1,432.2	1,457.4	0.00	0.00	0.00
9,000.0	90.00	270.47	7,302.0	-549.8	-1,532.2	1,557.3	0.00	0.00	0.00
9,100.0	90.00	270.47	7,302.0	-549.0	-1,632.2	1,657.1	0.00	0.00	0.00
9,200.0	90.00	270.47	7,302.0	-548.2	-1,732.2	1,756.9	0.00	0.00	0.00
9,300.0	90.00	270.47	7,302.0	-547.4	-1,832.2	1,856.8	0.00	0.00	0.00
9,400.0	90.00	270.47	7,302.0	-546.5	-1,932.2	1,956.6	0.00	0.00	0.00
9,500.0	90.00	270.47	7,302.0	-545.7	-2,032.1	2,056.5	0.00	0.00	0.00
9,600.0	90.00	270.47	7,302.0	-544.9	-2,132.1	2,156.3	0.00	0.00	0.00
9,700.0	90.00	270.47	7,302.0	-544.1	-2,232.1	2,256.1	0.00	0.00	0.00
9,800.0	90.00	270.47	7,302.0	-543.3	-2,332.1	2,356.0	0.00	0.00	0.00
9,900.0	90.00	270.47	7,302.0	-542.4	-2,432.1	2,455.8	0.00	0.00	0.00
10,000.0	90.00	270.47	7,302.0	-541.6	-2,532.1	2,555.6	0.00	0.00	0.00



Database:	EDM	Local Co-ordinate Reference:	Well MEAD 11
Company:	Bayswater Exploration & Production, LLC	TVD Reference:	KB @ 4929.0usft (Original Well Elev)
Project:	DJ Basin	MD Reference:	KB @ 4929.0usft (Original Well Elev)
Site:	Mead 9-E Pad	North Reference:	True
Well:	MEAD 11	Survey Calculation Method:	Minimum Curvature
Wellbore:	Wellbore #1		
Design:	Design #1		

Planned Survey									
Measured Depth (usft)	Inclination (°)	Azimuth (°)	Vertical Depth (usft)	+N/-S (usft)	+E/-W (usft)	Vertical Section (usft)	Dogleg Rate (°/100usft)	Build Rate (°/100usft)	Turn Rate (°/100usft)
10,100.0	90.00	270.47	7,302.0	-540.8	-2,632.1	2,655.5	0.00	0.00	0.00
10,200.0	90.00	270.47	7,302.0	-540.0	-2,732.1	2,755.3	0.00	0.00	0.00
10,300.0	90.00	270.47	7,302.0	-539.2	-2,832.1	2,855.1	0.00	0.00	0.00
10,400.0	90.00	270.47	7,302.0	-538.3	-2,932.1	2,955.0	0.00	0.00	0.00
10,500.0	90.00	270.47	7,302.0	-537.5	-3,032.1	3,054.8	0.00	0.00	0.00
10,600.0	90.00	270.47	7,302.0	-536.7	-3,132.1	3,154.7	0.00	0.00	0.00
10,700.0	90.00	270.47	7,302.0	-535.9	-3,232.1	3,254.5	0.00	0.00	0.00
10,800.0	90.00	270.47	7,302.0	-535.1	-3,332.1	3,354.3	0.00	0.00	0.00
10,900.0	90.00	270.47	7,302.0	-534.2	-3,432.1	3,454.2	0.00	0.00	0.00
11,000.0	90.00	270.47	7,302.0	-533.4	-3,532.1	3,554.0	0.00	0.00	0.00
11,100.0	90.00	270.47	7,302.0	-532.6	-3,632.1	3,653.8	0.00	0.00	0.00
11,200.0	90.00	270.47	7,302.0	-531.8	-3,732.1	3,753.7	0.00	0.00	0.00
11,300.0	90.00	270.47	7,302.0	-531.0	-3,832.1	3,853.5	0.00	0.00	0.00
11,400.0	90.00	270.47	7,302.0	-530.1	-3,932.1	3,953.3	0.00	0.00	0.00
11,500.0	90.00	270.47	7,302.0	-529.3	-4,032.1	4,053.2	0.00	0.00	0.00
11,600.0	90.00	270.47	7,302.0	-528.5	-4,132.1	4,153.0	0.00	0.00	0.00
11,700.0	90.00	270.47	7,302.0	-527.7	-4,232.1	4,252.9	0.00	0.00	0.00
11,800.0	90.00	270.47	7,302.0	-526.9	-4,332.1	4,352.7	0.00	0.00	0.00
11,900.0	90.00	270.47	7,302.0	-526.0	-4,432.1	4,452.5	0.00	0.00	0.00
12,000.0	90.00	270.47	7,302.0	-525.2	-4,532.1	4,552.4	0.00	0.00	0.00
12,100.0	90.00	270.47	7,302.0	-524.4	-4,632.1	4,652.2	0.00	0.00	0.00
12,200.0	90.00	270.47	7,302.0	-523.6	-4,732.1	4,752.0	0.00	0.00	0.00
12,300.0	90.00	270.47	7,302.0	-522.8	-4,832.1	4,851.9	0.00	0.00	0.00
12,400.0	90.00	270.47	7,302.0	-521.9	-4,932.0	4,951.7	0.00	0.00	0.00
12,500.0	90.00	270.47	7,302.0	-521.1	-5,032.0	5,051.5	0.00	0.00	0.00
12,600.0	90.00	270.47	7,302.0	-520.3	-5,132.0	5,151.4	0.00	0.00	0.00
12,700.0	90.00	270.47	7,302.0	-519.5	-5,232.0	5,251.2	0.00	0.00	0.00
12,800.0	90.00	270.47	7,302.0	-518.6	-5,332.0	5,351.0	0.00	0.00	0.00
12,900.0	90.00	270.47	7,302.0	-517.8	-5,432.0	5,450.9	0.00	0.00	0.00
13,000.0	90.00	270.47	7,302.0	-517.0	-5,532.0	5,550.7	0.00	0.00	0.00
13,100.0	90.00	270.47	7,302.0	-516.2	-5,632.0	5,650.6	0.00	0.00	0.00
13,200.0	90.00	270.47	7,302.0	-515.4	-5,732.0	5,750.4	0.00	0.00	0.00
13,300.0	90.00	270.47	7,302.0	-514.5	-5,832.0	5,850.2	0.00	0.00	0.00
13,400.0	90.00	270.47	7,302.0	-513.7	-5,932.0	5,950.1	0.00	0.00	0.00
13,500.0	90.00	270.47	7,302.0	-512.9	-6,032.0	6,049.9	0.00	0.00	0.00
13,600.0	90.00	270.47	7,302.0	-512.1	-6,132.0	6,149.7	0.00	0.00	0.00
13,700.0	90.00	270.47	7,302.0	-511.3	-6,232.0	6,249.6	0.00	0.00	0.00
13,800.0	90.00	270.47	7,302.0	-510.4	-6,332.0	6,349.4	0.00	0.00	0.00
13,900.0	90.00	270.47	7,302.0	-509.6	-6,432.0	6,449.2	0.00	0.00	0.00
14,000.0	90.00	270.47	7,302.0	-508.8	-6,532.0	6,549.1	0.00	0.00	0.00
14,100.0	90.00	270.47	7,302.0	-508.0	-6,632.0	6,648.9	0.00	0.00	0.00
14,200.0	90.00	270.47	7,302.0	-507.2	-6,732.0	6,748.8	0.00	0.00	0.00
14,300.0	90.00	270.47	7,302.0	-506.3	-6,832.0	6,848.6	0.00	0.00	0.00
14,400.0	90.00	270.47	7,302.0	-505.5	-6,932.0	6,948.4	0.00	0.00	0.00
14,500.0	90.00	270.47	7,302.0	-504.7	-7,032.0	7,048.3	0.00	0.00	0.00
14,600.0	90.00	270.47	7,302.0	-503.9	-7,132.0	7,148.1	0.00	0.00	0.00
14,700.0	90.00	270.47	7,302.0	-503.1	-7,232.0	7,247.9	0.00	0.00	0.00
14,800.0	90.00	270.47	7,302.0	-502.2	-7,332.0	7,347.8	0.00	0.00	0.00
14,900.0	90.00	270.47	7,302.0	-501.4	-7,432.0	7,447.6	0.00	0.00	0.00
15,000.0	90.00	270.47	7,302.0	-500.6	-7,532.0	7,547.4	0.00	0.00	0.00
15,100.0	90.00	270.47	7,302.0	-499.8	-7,632.0	7,647.3	0.00	0.00	0.00
15,200.0	90.00	270.47	7,302.0	-499.0	-7,732.0	7,747.1	0.00	0.00	0.00
15,300.0	90.00	270.47	7,302.0	-498.1	-7,832.0	7,847.0	0.00	0.00	0.00
15,400.0	90.00	270.47	7,302.0	-497.3	-7,931.9	7,946.8	0.00	0.00	0.00



Database:	EDM	Local Co-ordinate Reference:	Well MEAD 11
Company:	Bayswater Exploration & Production, LLC	TVD Reference:	KB @ 4929.0usft (Original Well Elev)
Project:	DJ Basin	MD Reference:	KB @ 4929.0usft (Original Well Elev)
Site:	Mead 9-E Pad	North Reference:	True
Well:	MEAD 11	Survey Calculation Method:	Minimum Curvature
Wellbore:	Wellbore #1		
Design:	Design #1		

Planned Survey										
Measured Depth (usft)	Inclination (°)	Azimuth (°)	Vertical Depth (usft)	+N/-S (usft)	+E/-W (usft)	Vertical Section (usft)	Dogleg Rate (°/100usft)	Build Rate (°/100usft)	Turn Rate (°/100usft)	
15,500.0	90.00	270.47	7,302.0	-496.5	-8,031.9	8,046.6	0.00	0.00	0.00	
15,600.0	90.00	270.47	7,302.0	-495.7	-8,131.9	8,146.5	0.00	0.00	0.00	
15,700.0	90.00	270.47	7,302.0	-494.9	-8,231.9	8,246.3	0.00	0.00	0.00	
15,800.0	90.00	270.47	7,302.0	-494.0	-8,331.9	8,346.1	0.00	0.00	0.00	
15,900.0	90.00	270.47	7,302.0	-493.2	-8,431.9	8,446.0	0.00	0.00	0.00	
16,000.0	90.00	270.47	7,302.0	-492.4	-8,531.9	8,545.8	0.00	0.00	0.00	
16,100.0	90.00	270.47	7,302.0	-491.6	-8,631.9	8,645.6	0.00	0.00	0.00	
16,200.0	90.00	270.47	7,302.0	-490.8	-8,731.9	8,745.5	0.00	0.00	0.00	
16,300.0	90.00	270.47	7,302.0	-489.9	-8,831.9	8,845.3	0.00	0.00	0.00	
16,400.0	90.00	270.47	7,302.0	-489.1	-8,931.9	8,945.2	0.00	0.00	0.00	
16,500.0	90.00	270.47	7,302.0	-488.3	-9,031.9	9,045.0	0.00	0.00	0.00	
16,600.0	90.00	270.47	7,302.0	-487.5	-9,131.9	9,144.8	0.00	0.00	0.00	
16,700.0	90.00	270.47	7,302.0	-486.7	-9,231.9	9,244.7	0.00	0.00	0.00	
16,800.0	90.00	270.47	7,302.0	-485.8	-9,331.9	9,344.5	0.00	0.00	0.00	
16,900.0	90.00	270.47	7,302.0	-485.0	-9,431.9	9,444.3	0.00	0.00	0.00	
17,000.0	90.00	270.47	7,302.0	-484.2	-9,531.9	9,544.2	0.00	0.00	0.00	
17,100.0	90.00	270.47	7,302.0	-483.4	-9,631.9	9,644.0	0.00	0.00	0.00	
17,200.0	90.00	270.47	7,302.0	-482.6	-9,731.9	9,743.8	0.00	0.00	0.00	
17,286.8	90.00	270.47	7,302.0	-481.8	-9,818.7	9,830.5	0.00	0.00	0.00	
MEAD 11 BHL										

Design Targets										
Target Name	Dip Angle (°)	Dip Dir. (°)	TVD (usft)	+N/-S (usft)	+E/-W (usft)	Northing (usft)	Easting (usft)	Latitude	Longitude	
- hit/miss target										
- Shape										
MEAD 11 BHL	0.00	0.00	7,302.0	-481.8	-9,818.7	1,458,992.86	3,191,682.95	40° 35' 28.630 N	104° 48' 35.287 W	
- plan hits target center										
- Point										
MEAD 11 LP	0.00	0.00	7,302.0	-560.7	-208.6	1,458,992.67	3,201,293.38	40° 35' 27.870 N	104° 46' 30.716 W	
- plan hits target center										
- Point										