



BAYSWATER

Bayswater Exploration & Production, LLC

DJ Basin

Mead 9-E Pad

MEAD 10

Wellbore #1

Plan: Design #1

Standard Planning Report

05 March, 2020



Pad Name: Mead 9-E Pad
Well Name: MEAD 10
Ground Level: 4909.0
SHL Latitude: 40° 35' 33.558 N
SHL Longitude: 104° 46' 28.013 W

SECTION DETAILS

Sec	MD	Inc	Azi	TVD	+N/-S	+E/-W	Dleg	TFace	VSect	Target
1	0.0	0.00	0.00	0.0	0.0	0.0	0.00	0.00	0.0	
2	1500.0	0.00	0.00	1500.0	0.0	0.0	0.00	0.00	0.0	
3	1820.8	6.42	138.76	1820.2	-13.5	11.8	2.00	138.76	-11.4	
4	6441.5	6.42	138.76	6411.9	-401.8	352.3	0.00	0.00	-338.5	
5	6762.3	0.00	270.47	6732.0	-415.3	364.1	2.00	180.00	-349.9	
6	6962.3	0.00	270.47	6932.0	-415.3	364.1	0.00	0.00	-349.9	
7	7862.3	90.00	270.47	7505.0	-410.6	-208.8	10.00	0.00	222.6	MEAD 10 LP
8	17470.5	90.00	270.47	7505.0	-331.8	-9816.7	0.00	0.00	9822.3	MEAD 10 BHL

DESIGN TARGET DETAILS

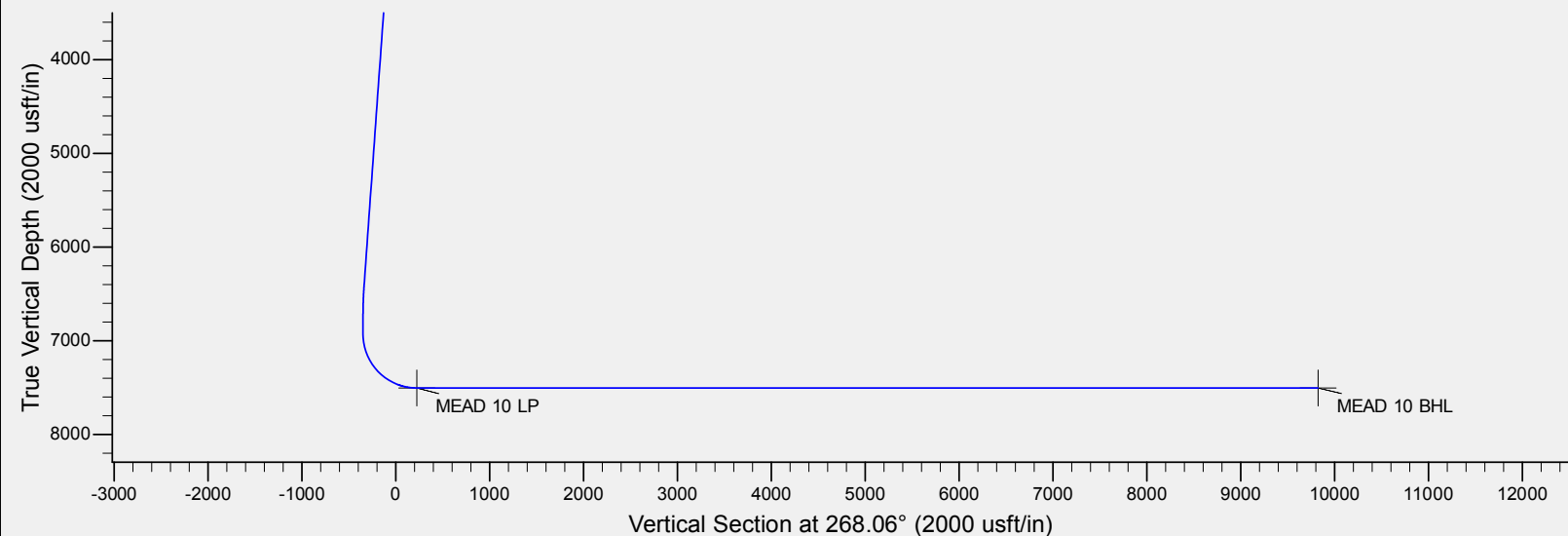
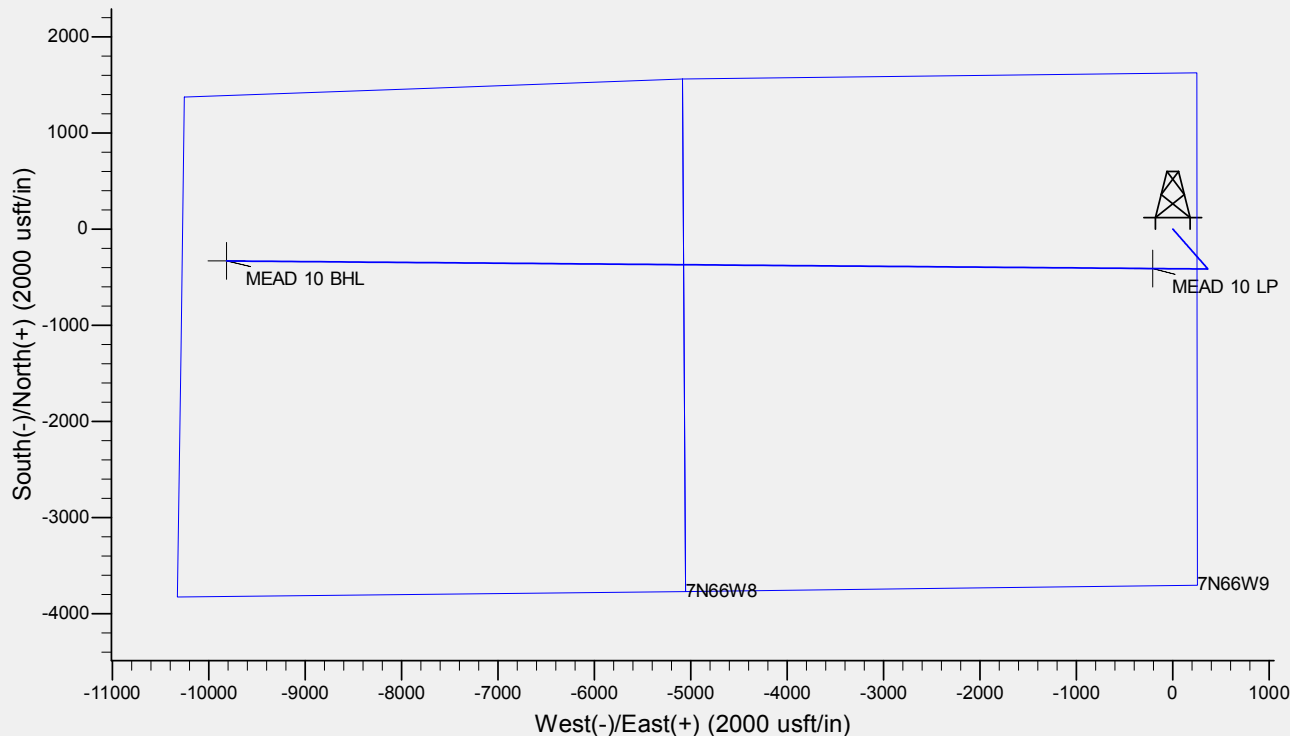
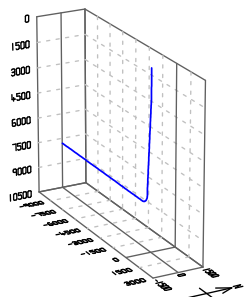
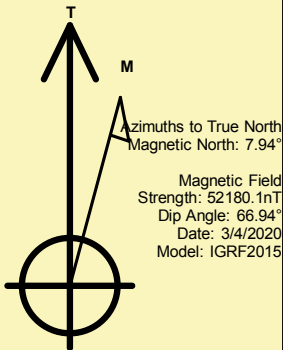
Name	TVD	+N/-S	+E/-W	Northing	Easting	Latitude	Longitude	Shape
MEAD 10 LP	7505.0	-410.6	-208.8	1459157.69	3201291.75	40° 35' 29.501 N	104° 46' 30.720 W	Point
MEAD 10 BHL	- plan hits target center 7505.0	-331.8	-9816.7	1459157.90	3191683.61	40° 35' 30.260 N	104° 48' 35.262 W	Point

REFERENCE INFORMATION

Co-ordinate (N/E) Reference: Well MEAD 10, True North
Vertical (TVD) Reference: KB @ 4929.0usft (Original Well Elev)
Section (VS) Reference: Slot - (0.0N, 0.0E)
Measured Depth Reference: KB @ 4929.0usft (Original Well Elev)
Calculation Method: Minimum Curvature

CASING DETAILS

No casing data is available





Database:	EDM	Local Co-ordinate Reference:	Well MEAD 10
Company:	Bayswater Exploration & Production, LLC	TVD Reference:	KB @ 4929.0usft (Original Well Elev)
Project:	DJ Basin	MD Reference:	KB @ 4929.0usft (Original Well Elev)
Site:	Mead 9-E Pad	North Reference:	True
Well:	MEAD 10	Survey Calculation Method:	Minimum Curvature
Wellbore:	Wellbore #1		
Design:	Design #1		

Project	DJ Basin, DJ Basin		
Map System:	US State Plane 1983	System Datum:	Mean Sea Level
Geo Datum:	North American Datum 1983		
Map Zone:	Colorado Northern Zone		

Site	Mead 9-E Pad				
Site Position:		Northing:	1,459,659.95 usft	Latitude:	40° 35' 34.447 N
From:	Lat/Long	Easting:	3,201,496.50 usft	Longitude:	104° 46' 28.013 W
Position Uncertainty:	0.0 usft	Slot Radius:	13-3/16 "	Grid Convergence:	0.47 °

Well	MEAD 10					
Well Position	+N/-S	-90.0 usft	Northing:	1,459,569.97 usft	Latitude:	40° 35' 33.558 N
	+E/-W	0.0 usft	Easting:	3,201,497.23 usft	Longitude:	104° 46' 28.013 W
Position Uncertainty		0.0 usft	Wellhead Elevation:		Ground Level:	4,909.0 usft

Wellbore	Wellbore #1				
Magnetics	Model Name	Sample Date	Declination (°)	Dip Angle (°)	Field Strength (nT)
	IGRF2015	3/4/2020	7.94	66.94	52,180.12144477

Design	Design #1			
Audit Notes:				
Version:	Phase:	PLAN	Tie On Depth:	0.0
Vertical Section:	Depth From (TVD) (usft)	+N/-S (usft)	+E/-W (usft)	Direction (°)
	0.0	0.0	0.0	268.06

Plan Survey Tool Program	Date	3/4/2020		
Depth From (usft)	Depth To (usft)	Survey (Wellbore)	Tool Name	Remarks
1	0.0	17,470.5	Design #1 (Wellbore #1)	MWD
				OWSG MWD - Standard

Plan Sections										
Measured Depth (usft)	Inclination (°)	Azimuth (°)	Vertical Depth (usft)	+N/-S (usft)	+E/-W (usft)	Dogleg Rate (°/100usft)	Build Rate (°/100usft)	Turn Rate (°/100usft)	TFO (°)	Target
0.0	0.00	0.00	0.0	0.0	0.0	0.00	0.00	0.00	0.00	
1,500.0	0.00	0.00	1,500.0	0.0	0.0	0.00	0.00	0.00	0.00	
1,820.8	6.42	138.76	1,820.2	-13.5	11.8	2.00	2.00	0.00	138.76	
6,441.5	6.42	138.76	6,411.9	-401.8	352.3	0.00	0.00	0.00	0.00	
6,762.3	0.00	270.47	6,732.0	-415.3	364.1	2.00	-2.00	0.00	180.00	
6,962.3	0.00	270.47	6,932.0	-415.3	364.1	0.00	0.00	0.00	0.00	
7,862.3	90.00	270.47	7,505.0	-410.6	-208.8	10.00	10.00	0.00	0.00	MEAD 10 LP
17,470.5	90.00	270.47	7,505.0	-331.8	-9,816.7	0.00	0.00	0.00	0.00	MEAD 10 BHL



Database:	EDM	Local Co-ordinate Reference:	Well MEAD 10
Company:	Bayswater Exploration & Production, LLC	TVD Reference:	KB @ 4929.0usft (Original Well Elev)
Project:	DJ Basin	MD Reference:	KB @ 4929.0usft (Original Well Elev)
Site:	Mead 9-E Pad	North Reference:	True
Well:	MEAD 10	Survey Calculation Method:	Minimum Curvature
Wellbore:	Wellbore #1		
Design:	Design #1		

Planned Survey									
Measured Depth (usft)	Inclination (°)	Azimuth (°)	Vertical Depth (usft)	+N/-S (usft)	+E/-W (usft)	Vertical Section (usft)	Dogleg Rate (°/100usft)	Build Rate (°/100usft)	Turn Rate (°/100usft)
0.0	0.00	0.00	0.0	0.0	0.0	0.0	0.00	0.00	0.00
100.0	0.00	0.00	100.0	0.0	0.0	0.0	0.00	0.00	0.00
200.0	0.00	0.00	200.0	0.0	0.0	0.0	0.00	0.00	0.00
300.0	0.00	0.00	300.0	0.0	0.0	0.0	0.00	0.00	0.00
400.0	0.00	0.00	400.0	0.0	0.0	0.0	0.00	0.00	0.00
500.0	0.00	0.00	500.0	0.0	0.0	0.0	0.00	0.00	0.00
600.0	0.00	0.00	600.0	0.0	0.0	0.0	0.00	0.00	0.00
700.0	0.00	0.00	700.0	0.0	0.0	0.0	0.00	0.00	0.00
800.0	0.00	0.00	800.0	0.0	0.0	0.0	0.00	0.00	0.00
900.0	0.00	0.00	900.0	0.0	0.0	0.0	0.00	0.00	0.00
1,000.0	0.00	0.00	1,000.0	0.0	0.0	0.0	0.00	0.00	0.00
1,100.0	0.00	0.00	1,100.0	0.0	0.0	0.0	0.00	0.00	0.00
1,200.0	0.00	0.00	1,200.0	0.0	0.0	0.0	0.00	0.00	0.00
1,300.0	0.00	0.00	1,300.0	0.0	0.0	0.0	0.00	0.00	0.00
1,400.0	0.00	0.00	1,400.0	0.0	0.0	0.0	0.00	0.00	0.00
1,500.0	0.00	0.00	1,500.0	0.0	0.0	0.0	0.00	0.00	0.00
1,600.0	2.00	138.76	1,600.0	-1.3	1.2	-1.1	2.00	2.00	0.00
1,700.0	4.00	138.76	1,699.8	-5.2	4.6	-4.4	2.00	2.00	0.00
1,800.0	6.00	138.76	1,799.5	-11.8	10.3	-9.9	2.00	2.00	0.00
1,820.8	6.42	138.76	1,820.2	-13.5	11.8	-11.4	2.00	2.00	0.00
1,900.0	6.42	138.76	1,898.8	-20.1	17.7	-17.0	0.00	0.00	0.00
2,000.0	6.42	138.76	1,998.2	-28.6	25.0	-24.1	0.00	0.00	0.00
2,100.0	6.42	138.76	2,097.6	-37.0	32.4	-31.1	0.00	0.00	0.00
2,200.0	6.42	138.76	2,197.0	-45.4	39.8	-38.2	0.00	0.00	0.00
2,300.0	6.42	138.76	2,296.3	-53.8	47.1	-45.3	0.00	0.00	0.00
2,400.0	6.42	138.76	2,395.7	-62.2	54.5	-52.4	0.00	0.00	0.00
2,500.0	6.42	138.76	2,495.1	-70.6	61.9	-59.5	0.00	0.00	0.00
2,600.0	6.42	138.76	2,594.4	-79.0	69.2	-66.5	0.00	0.00	0.00
2,700.0	6.42	138.76	2,693.8	-87.4	76.6	-73.6	0.00	0.00	0.00
2,800.0	6.42	138.76	2,793.2	-95.8	84.0	-80.7	0.00	0.00	0.00
2,900.0	6.42	138.76	2,892.6	-104.2	91.3	-87.8	0.00	0.00	0.00
3,000.0	6.42	138.76	2,991.9	-112.6	98.7	-94.8	0.00	0.00	0.00
3,100.0	6.42	138.76	3,091.3	-121.0	106.1	-101.9	0.00	0.00	0.00
3,200.0	6.42	138.76	3,190.7	-129.4	113.4	-109.0	0.00	0.00	0.00
3,300.0	6.42	138.76	3,290.1	-137.8	120.8	-116.1	0.00	0.00	0.00
3,400.0	6.42	138.76	3,389.4	-146.2	128.2	-123.2	0.00	0.00	0.00
3,500.0	6.42	138.76	3,488.8	-154.6	135.5	-130.2	0.00	0.00	0.00
3,600.0	6.42	138.76	3,588.2	-163.0	142.9	-137.3	0.00	0.00	0.00
3,700.0	6.42	138.76	3,687.6	-171.4	150.3	-144.4	0.00	0.00	0.00
3,800.0	6.42	138.76	3,786.9	-179.8	157.6	-151.5	0.00	0.00	0.00
3,900.0	6.42	138.76	3,886.3	-188.2	165.0	-158.6	0.00	0.00	0.00
4,000.0	6.42	138.76	3,985.7	-196.6	172.4	-165.6	0.00	0.00	0.00
4,100.0	6.42	138.76	4,085.1	-205.0	179.7	-172.7	0.00	0.00	0.00
4,200.0	6.42	138.76	4,184.4	-213.4	187.1	-179.8	0.00	0.00	0.00
4,300.0	6.42	138.76	4,283.8	-221.8	194.5	-186.9	0.00	0.00	0.00
4,400.0	6.42	138.76	4,383.2	-230.2	201.9	-194.0	0.00	0.00	0.00
4,500.0	6.42	138.76	4,482.5	-238.6	209.2	-201.0	0.00	0.00	0.00
4,600.0	6.42	138.76	4,581.9	-247.0	216.6	-208.1	0.00	0.00	0.00
4,700.0	6.42	138.76	4,681.3	-255.4	224.0	-215.2	0.00	0.00	0.00
4,800.0	6.42	138.76	4,780.7	-263.8	231.3	-222.3	0.00	0.00	0.00
4,900.0	6.42	138.76	4,880.0	-272.2	238.7	-229.4	0.00	0.00	0.00
5,000.0	6.42	138.76	4,979.4	-280.6	246.1	-236.4	0.00	0.00	0.00
5,100.0	6.42	138.76	5,078.8	-289.1	253.4	-243.5	0.00	0.00	0.00
5,200.0	6.42	138.76	5,178.2	-297.5	260.8	-250.6	0.00	0.00	0.00



Database:	EDM	Local Co-ordinate Reference:	Well MEAD 10
Company:	Bayswater Exploration & Production, LLC	TVD Reference:	KB @ 4929.0usft (Original Well Elev)
Project:	DJ Basin	MD Reference:	KB @ 4929.0usft (Original Well Elev)
Site:	Mead 9-E Pad	North Reference:	True
Well:	MEAD 10	Survey Calculation Method:	Minimum Curvature
Wellbore:	Wellbore #1		
Design:	Design #1		

Planned Survey									
Measured Depth (usft)	Inclination (°)	Azimuth (°)	Vertical Depth (usft)	+N/-S (usft)	+E/-W (usft)	Vertical Section (usft)	Dogleg Rate (°/100usft)	Build Rate (°/100usft)	Turn Rate (°/100usft)
5,300.0	6.42	138.76	5,277.5	-305.9	268.2	-257.7	0.00	0.00	0.00
5,400.0	6.42	138.76	5,376.9	-314.3	275.5	-264.8	0.00	0.00	0.00
5,500.0	6.42	138.76	5,476.3	-322.7	282.9	-271.8	0.00	0.00	0.00
5,600.0	6.42	138.76	5,575.7	-331.1	290.3	-278.9	0.00	0.00	0.00
5,700.0	6.42	138.76	5,675.0	-339.5	297.6	-286.0	0.00	0.00	0.00
5,800.0	6.42	138.76	5,774.4	-347.9	305.0	-293.1	0.00	0.00	0.00
5,900.0	6.42	138.76	5,873.8	-356.3	312.4	-300.2	0.00	0.00	0.00
6,000.0	6.42	138.76	5,973.1	-364.7	319.7	-307.2	0.00	0.00	0.00
6,100.0	6.42	138.76	6,072.5	-373.1	327.1	-314.3	0.00	0.00	0.00
6,200.0	6.42	138.76	6,171.9	-381.5	334.5	-321.4	0.00	0.00	0.00
6,300.0	6.42	138.76	6,271.3	-389.9	341.8	-328.5	0.00	0.00	0.00
6,400.0	6.42	138.76	6,370.6	-398.3	349.2	-335.6	0.00	0.00	0.00
6,441.5	6.42	138.76	6,411.9	-401.8	352.3	-338.5	0.00	0.00	0.00
6,500.0	5.25	138.76	6,470.1	-406.3	356.2	-342.3	2.00	-2.00	0.00
6,600.0	3.25	138.76	6,569.8	-411.8	361.1	-346.9	2.00	-2.00	0.00
6,700.0	1.25	138.76	6,669.7	-414.8	363.6	-349.4	2.00	-2.00	0.00
6,762.3	0.00	270.47	6,732.0	-415.3	364.1	-349.9	2.00	-2.00	0.00
6,800.0	0.00	0.00	6,769.7	-415.3	364.1	-349.9	0.00	0.00	0.00
6,900.0	0.00	0.00	6,869.7	-415.3	364.1	-349.9	0.00	0.00	0.00
6,962.3	0.00	270.47	6,932.0	-415.3	364.1	-349.9	0.00	0.00	0.00
7,000.0	3.77	270.47	6,969.7	-415.3	362.9	-348.6	10.00	10.00	0.00
7,100.0	13.77	270.47	7,068.4	-415.1	347.6	-333.4	10.00	10.00	0.00
7,200.0	23.77	270.47	7,163.0	-414.9	315.5	-301.3	10.00	10.00	0.00
7,300.0	33.77	270.47	7,250.5	-414.5	267.4	-253.3	10.00	10.00	0.00
7,400.0	43.77	270.47	7,328.4	-414.0	204.9	-190.8	10.00	10.00	0.00
7,500.0	53.77	270.47	7,394.2	-413.4	129.8	-115.8	10.00	10.00	0.00
7,600.0	63.77	270.47	7,446.0	-412.7	44.4	-30.4	10.00	10.00	0.00
7,700.0	73.77	270.47	7,482.2	-411.9	-48.7	62.6	10.00	10.00	0.00
7,800.0	83.77	270.47	7,501.6	-411.1	-146.6	160.4	10.00	10.00	0.00
7,862.3	90.00	270.47	7,505.0	-410.6	-208.8	222.6	10.00	10.00	0.00
MEAD 10 LP									
7,900.0	90.00	270.47	7,505.0	-410.3	-246.5	260.2	0.00	0.00	0.00
8,000.0	90.00	270.47	7,505.0	-409.4	-346.5	360.1	0.00	0.00	0.00
8,100.0	90.00	270.47	7,505.0	-408.6	-446.5	460.1	0.00	0.00	0.00
8,200.0	90.00	270.47	7,505.0	-407.8	-546.5	560.0	0.00	0.00	0.00
8,300.0	90.00	270.47	7,505.0	-407.0	-646.5	659.9	0.00	0.00	0.00
8,400.0	90.00	270.47	7,505.0	-406.2	-746.5	759.8	0.00	0.00	0.00
8,500.0	90.00	270.47	7,505.0	-405.3	-846.5	859.7	0.00	0.00	0.00
8,600.0	90.00	270.47	7,505.0	-404.5	-946.5	959.6	0.00	0.00	0.00
8,700.0	90.00	270.47	7,505.0	-403.7	-1,046.5	1,059.5	0.00	0.00	0.00
8,800.0	90.00	270.47	7,505.0	-402.9	-1,146.5	1,159.4	0.00	0.00	0.00
8,900.0	90.00	270.47	7,505.0	-402.1	-1,246.5	1,259.4	0.00	0.00	0.00
9,000.0	90.00	270.47	7,505.0	-401.2	-1,346.5	1,359.3	0.00	0.00	0.00
9,100.0	90.00	270.47	7,505.0	-400.4	-1,446.5	1,459.2	0.00	0.00	0.00
9,200.0	90.00	270.47	7,505.0	-399.6	-1,546.5	1,559.1	0.00	0.00	0.00
9,300.0	90.00	270.47	7,505.0	-398.8	-1,646.5	1,659.0	0.00	0.00	0.00
9,400.0	90.00	270.47	7,505.0	-398.0	-1,746.5	1,758.9	0.00	0.00	0.00
9,500.0	90.00	270.47	7,505.0	-397.1	-1,846.5	1,858.8	0.00	0.00	0.00
9,600.0	90.00	270.47	7,505.0	-396.3	-1,946.5	1,958.7	0.00	0.00	0.00
9,700.0	90.00	270.47	7,505.0	-395.5	-2,046.5	2,058.6	0.00	0.00	0.00
9,800.0	90.00	270.47	7,505.0	-394.7	-2,146.5	2,158.6	0.00	0.00	0.00
9,900.0	90.00	270.47	7,505.0	-393.9	-2,246.5	2,258.5	0.00	0.00	0.00
10,000.0	90.00	270.47	7,505.0	-393.0	-2,346.4	2,358.4	0.00	0.00	0.00



Database:	EDM	Local Co-ordinate Reference:	Well MEAD 10
Company:	Bayswater Exploration & Production, LLC	TVD Reference:	KB @ 4929.0usft (Original Well Elev)
Project:	DJ Basin	MD Reference:	KB @ 4929.0usft (Original Well Elev)
Site:	Mead 9-E Pad	North Reference:	True
Well:	MEAD 10	Survey Calculation Method:	Minimum Curvature
Wellbore:	Wellbore #1		
Design:	Design #1		

Planned Survey										
Measured Depth (usft)	Inclination (°)	Azimuth (°)	Vertical Depth (usft)	+N/-S (usft)	+E/-W (usft)	Vertical Section (usft)	Dogleg Rate (°/100usft)	Build Rate (°/100usft)	Turn Rate (°/100usft)	
10,100.0	90.00	270.47	7,505.0	-392.2	-2,446.4	2,458.3	0.00	0.00	0.00	
10,200.0	90.00	270.47	7,505.0	-391.4	-2,546.4	2,558.2	0.00	0.00	0.00	
10,300.0	90.00	270.47	7,505.0	-390.6	-2,646.4	2,658.1	0.00	0.00	0.00	
10,400.0	90.00	270.47	7,505.0	-389.8	-2,746.4	2,758.0	0.00	0.00	0.00	
10,500.0	90.00	270.47	7,505.0	-388.9	-2,846.4	2,857.9	0.00	0.00	0.00	
10,600.0	90.00	270.47	7,505.0	-388.1	-2,946.4	2,957.9	0.00	0.00	0.00	
10,700.0	90.00	270.47	7,505.0	-387.3	-3,046.4	3,057.8	0.00	0.00	0.00	
10,800.0	90.00	270.47	7,505.0	-386.5	-3,146.4	3,157.7	0.00	0.00	0.00	
10,900.0	90.00	270.47	7,505.0	-385.7	-3,246.4	3,257.6	0.00	0.00	0.00	
11,000.0	90.00	270.47	7,505.0	-384.8	-3,346.4	3,357.5	0.00	0.00	0.00	
11,100.0	90.00	270.47	7,505.0	-384.0	-3,446.4	3,457.4	0.00	0.00	0.00	
11,200.0	90.00	270.47	7,505.0	-383.2	-3,546.4	3,557.3	0.00	0.00	0.00	
11,300.0	90.00	270.47	7,505.0	-382.4	-3,646.4	3,657.2	0.00	0.00	0.00	
11,400.0	90.00	270.47	7,505.0	-381.6	-3,746.4	3,757.2	0.00	0.00	0.00	
11,500.0	90.00	270.47	7,505.0	-380.7	-3,846.4	3,857.1	0.00	0.00	0.00	
11,600.0	90.00	270.47	7,505.0	-379.9	-3,946.4	3,957.0	0.00	0.00	0.00	
11,700.0	90.00	270.47	7,505.0	-379.1	-4,046.4	4,056.9	0.00	0.00	0.00	
11,800.0	90.00	270.47	7,505.0	-378.3	-4,146.4	4,156.8	0.00	0.00	0.00	
11,900.0	90.00	270.47	7,505.0	-377.5	-4,246.4	4,256.7	0.00	0.00	0.00	
12,000.0	90.00	270.47	7,505.0	-376.6	-4,346.4	4,356.6	0.00	0.00	0.00	
12,100.0	90.00	270.47	7,505.0	-375.8	-4,446.4	4,456.5	0.00	0.00	0.00	
12,200.0	90.00	270.47	7,505.0	-375.0	-4,546.4	4,556.4	0.00	0.00	0.00	
12,300.0	90.00	270.47	7,505.0	-374.2	-4,646.4	4,656.4	0.00	0.00	0.00	
12,400.0	90.00	270.47	7,505.0	-373.3	-4,746.4	4,756.3	0.00	0.00	0.00	
12,500.0	90.00	270.47	7,505.0	-372.5	-4,846.4	4,856.2	0.00	0.00	0.00	
12,600.0	90.00	270.47	7,505.0	-371.7	-4,946.4	4,956.1	0.00	0.00	0.00	
12,700.0	90.00	270.47	7,505.0	-370.9	-5,046.4	5,056.0	0.00	0.00	0.00	
12,800.0	90.00	270.47	7,505.0	-370.1	-5,146.4	5,155.9	0.00	0.00	0.00	
12,900.0	90.00	270.47	7,505.0	-369.2	-5,246.3	5,255.8	0.00	0.00	0.00	
13,000.0	90.00	270.47	7,505.0	-368.4	-5,346.3	5,355.7	0.00	0.00	0.00	
13,100.0	90.00	270.47	7,505.0	-367.6	-5,446.3	5,455.7	0.00	0.00	0.00	
13,200.0	90.00	270.47	7,505.0	-366.8	-5,546.3	5,555.6	0.00	0.00	0.00	
13,300.0	90.00	270.47	7,505.0	-366.0	-5,646.3	5,655.5	0.00	0.00	0.00	
13,400.0	90.00	270.47	7,505.0	-365.1	-5,746.3	5,755.4	0.00	0.00	0.00	
13,500.0	90.00	270.47	7,505.0	-364.3	-5,846.3	5,855.3	0.00	0.00	0.00	
13,600.0	90.00	270.47	7,505.0	-363.5	-5,946.3	5,955.2	0.00	0.00	0.00	
13,700.0	90.00	270.47	7,505.0	-362.7	-6,046.3	6,055.1	0.00	0.00	0.00	
13,800.0	90.00	270.47	7,505.0	-361.9	-6,146.3	6,155.0	0.00	0.00	0.00	
13,900.0	90.00	270.47	7,505.0	-361.0	-6,246.3	6,254.9	0.00	0.00	0.00	
14,000.0	90.00	270.47	7,505.0	-360.2	-6,346.3	6,354.9	0.00	0.00	0.00	
14,100.0	90.00	270.47	7,505.0	-359.4	-6,446.3	6,454.8	0.00	0.00	0.00	
14,200.0	90.00	270.47	7,505.0	-358.6	-6,546.3	6,554.7	0.00	0.00	0.00	
14,300.0	90.00	270.47	7,505.0	-357.8	-6,646.3	6,654.6	0.00	0.00	0.00	
14,400.0	90.00	270.47	7,505.0	-356.9	-6,746.3	6,754.5	0.00	0.00	0.00	
14,500.0	90.00	270.47	7,505.0	-356.1	-6,846.3	6,854.4	0.00	0.00	0.00	
14,600.0	90.00	270.47	7,505.0	-355.3	-6,946.3	6,954.3	0.00	0.00	0.00	
14,700.0	90.00	270.47	7,505.0	-354.5	-7,046.3	7,054.2	0.00	0.00	0.00	
14,800.0	90.00	270.47	7,505.0	-353.7	-7,146.3	7,154.2	0.00	0.00	0.00	
14,900.0	90.00	270.47	7,505.0	-352.8	-7,246.3	7,254.1	0.00	0.00	0.00	
15,000.0	90.00	270.47	7,505.0	-352.0	-7,346.3	7,354.0	0.00	0.00	0.00	
15,100.0	90.00	270.47	7,505.0	-351.2	-7,446.3	7,453.9	0.00	0.00	0.00	
15,200.0	90.00	270.47	7,505.0	-350.4	-7,546.3	7,553.8	0.00	0.00	0.00	
15,300.0	90.00	270.47	7,505.0	-349.6	-7,646.3	7,653.7	0.00	0.00	0.00	
15,400.0	90.00	270.47	7,505.0	-348.7	-7,746.3	7,753.6	0.00	0.00	0.00	



Database:	EDM	Local Co-ordinate Reference:	Well MEAD 10
Company:	Bayswater Exploration & Production, LLC	TVD Reference:	KB @ 4929.0usft (Original Well Elev)
Project:	DJ Basin	MD Reference:	KB @ 4929.0usft (Original Well Elev)
Site:	Mead 9-E Pad	North Reference:	True
Well:	MEAD 10	Survey Calculation Method:	Minimum Curvature
Wellbore:	Wellbore #1		
Design:	Design #1		

Planned Survey										
Measured Depth (usft)	Inclination (°)	Azimuth (°)	Vertical Depth (usft)	+N/-S (usft)	+E/-W (usft)	Vertical Section (usft)	Dogleg Rate (°/100usft)	Build Rate (°/100usft)	Turn Rate (°/100usft)	
15,500.0	90.00	270.47	7,505.0	-347.9	-7,846.3	7,853.5	0.00	0.00	0.00	
15,600.0	90.00	270.47	7,505.0	-347.1	-7,946.3	7,953.4	0.00	0.00	0.00	
15,700.0	90.00	270.47	7,505.0	-346.3	-8,046.3	8,053.4	0.00	0.00	0.00	
15,800.0	90.00	270.47	7,505.0	-345.5	-8,146.3	8,153.3	0.00	0.00	0.00	
15,900.0	90.00	270.47	7,505.0	-344.6	-8,246.2	8,253.2	0.00	0.00	0.00	
16,000.0	90.00	270.47	7,505.0	-343.8	-8,346.2	8,353.1	0.00	0.00	0.00	
16,100.0	90.00	270.47	7,505.0	-343.0	-8,446.2	8,453.0	0.00	0.00	0.00	
16,200.0	90.00	270.47	7,505.0	-342.2	-8,546.2	8,552.9	0.00	0.00	0.00	
16,300.0	90.00	270.47	7,505.0	-341.4	-8,646.2	8,652.8	0.00	0.00	0.00	
16,400.0	90.00	270.47	7,505.0	-340.5	-8,746.2	8,752.7	0.00	0.00	0.00	
16,500.0	90.00	270.47	7,505.0	-339.7	-8,846.2	8,852.7	0.00	0.00	0.00	
16,600.0	90.00	270.47	7,505.0	-338.9	-8,946.2	8,952.6	0.00	0.00	0.00	
16,700.0	90.00	270.47	7,505.0	-338.1	-9,046.2	9,052.5	0.00	0.00	0.00	
16,800.0	90.00	270.47	7,505.0	-337.3	-9,146.2	9,152.4	0.00	0.00	0.00	
16,900.0	90.00	270.47	7,505.0	-336.4	-9,246.2	9,252.3	0.00	0.00	0.00	
17,000.0	90.00	270.47	7,505.0	-335.6	-9,346.2	9,352.2	0.00	0.00	0.00	
17,100.0	90.00	270.47	7,505.0	-334.8	-9,446.2	9,452.1	0.00	0.00	0.00	
17,200.0	90.00	270.47	7,505.0	-334.0	-9,546.2	9,552.0	0.00	0.00	0.00	
17,300.0	90.00	270.47	7,505.0	-333.1	-9,646.2	9,652.0	0.00	0.00	0.00	
17,400.0	90.00	270.47	7,505.0	-332.3	-9,746.2	9,751.9	0.00	0.00	0.00	
17,470.5	90.00	270.47	7,505.0	-331.8	-9,816.7	9,822.3	0.00	0.00	0.00	
MEAD 10 BHL										

Design Targets										
Target Name	Dip Angle (°)	Dip Dir. (°)	TVD (usft)	+N/-S (usft)	+E/-W (usft)	Northing (usft)	Easting (usft)	Latitude	Longitude	
- hit/miss target										
- Shape										
MEAD 10 LP	0.00	0.00	7,505.0	-410.6	-208.8	1,459,157.69	3,201,291.75	40° 35' 29.501 N	104° 46' 30.720 W	
- plan hits target center										
- Point										
MEAD 10 BHL	0.00	0.00	7,505.0	-331.8	-9,816.7	1,459,157.90	3,191,683.61	40° 35' 30.260 N	104° 48' 35.262 W	
- plan hits target center										
- Point										