



BAYSWATER

Bayswater Exploration & Production, LLC

DJ Basin

Mead 9-E Pad

MEAD 9

Wellbore #1

Plan: Design #1

Standard Planning Report

05 March, 2020



Pad Name: Mead 9-E Pad
Well Name: MEAD 9
Ground Level: 4909.0
SHL Latitude: 40° 35' 33.706 N
SHL Longitude: 104° 46' 28.013 W

SECTION DETAILS

Sec	MD	Inc	Azi	TVD	+N/-S	+E/-W	Dleg	TFace	VSect	Target
1	0.0	0.00	0.00	0.0	0.0	0.0	0.00	0.00	0.0	
2	1500.0	0.00	0.00	1500.0	0.0	0.0	0.00	0.00	0.0	
3	1770.2	5.40	126.09	1769.8	-7.5	10.3	2.00	126.09	-10.2	
4	6279.7	5.40	126.09	6259.2	-257.7	353.5	0.00	0.00	-348.7	
5	6549.9	0.00	270.47	6529.0	-265.2	363.8	2.00	180.00	-358.8	
6	6749.9	0.00	270.47	6729.0	-265.2	363.8	0.00	0.00	-358.8	
7	7649.9	90.00	270.47	7302.0	-260.5	-209.1	10.00	0.00	213.9	MEAD 9 LP
8	17255.7	90.00	270.47	7302.0	-181.7	-9814.7	0.00	0.00	9816.3	MEAD 9 BHL

DESIGN TARGET DETAILS

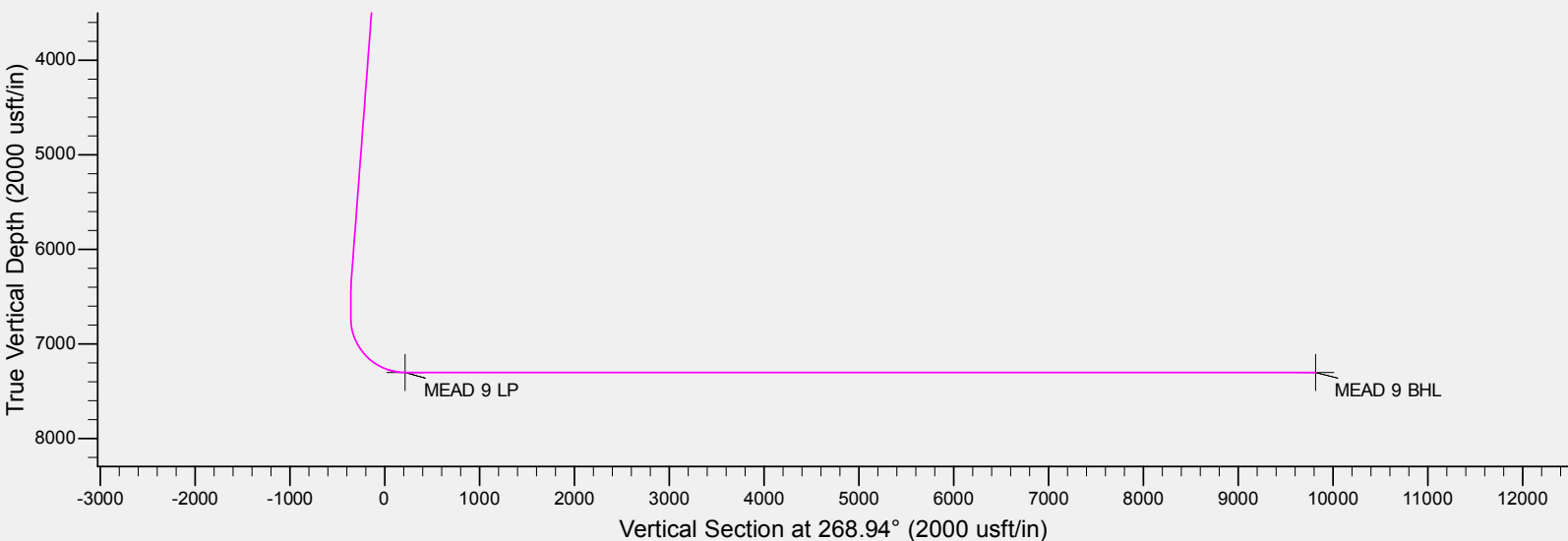
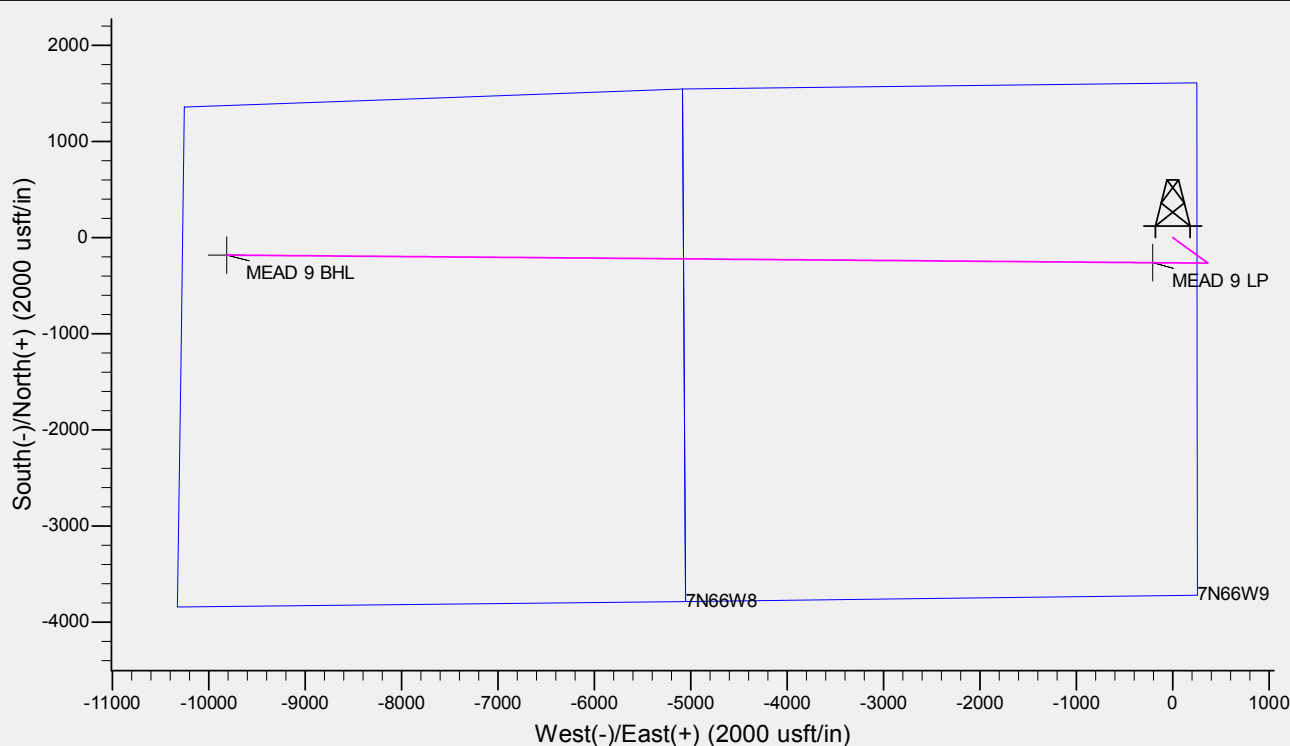
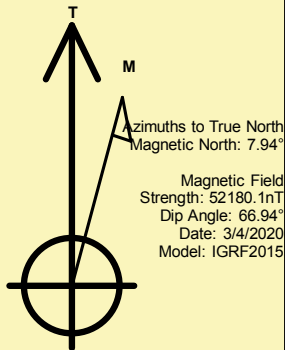
Name	TVD	+N/-S	+E/-W	Northing	Easting	Latitude	Longitude	Shape
MEAD 9 LP	7302.0	-260.5	-209.1	1459322.72	3201290.12	40° 35' 31.132 N	104° 46' 30.724 W	Point
MEAD 9 BHL	- plan hits target center 7302.0	-181.7	-9814.7	1459322.95	3191684.27	40° 35' 31.891 N	104° 48' 35.237 W	Point

REFERENCE INFORMATION

Co-ordinate (N/E) Reference: Well MEAD 9, True North
Vertical (TVD) Reference: KB @ 4929.0usft (Original Well Elev)
Section (VS) Reference: Slot - (0.0N, 0.0E)
Measured Depth Reference: KB @ 4929.0usft (Original Well Elev)
Calculation Method: Minimum Curvature

CASING DETAILS

No casing data is available





Database:	EDM	Local Co-ordinate Reference:	Well MEAD 9
Company:	Bayswater Exploration & Production, LLC	TVD Reference:	KB @ 4929.0usft (Original Well Elev)
Project:	DJ Basin	MD Reference:	KB @ 4929.0usft (Original Well Elev)
Site:	Mead 9-E Pad	North Reference:	True
Well:	MEAD 9	Survey Calculation Method:	Minimum Curvature
Wellbore:	Wellbore #1		
Design:	Design #1		

Project	DJ Basin, DJ Basin		
Map System:	US State Plane 1983	System Datum:	Mean Sea Level
Geo Datum:	North American Datum 1983		
Map Zone:	Colorado Northern Zone		

Site	Mead 9-E Pad				
Site Position:		Northing:	1,459,659.95 usft	Latitude:	40° 35' 34.447 N
From:	Lat/Long	Easting:	3,201,496.50 usft	Longitude:	104° 46' 28.013 W
Position Uncertainty:	0.0 usft	Slot Radius:	13-3/16 "	Grid Convergence:	0.47 °

Well	MEAD 9					
Well Position	+N/-S	-75.1 usft	Northing:	1,459,584.90 usft	Latitude:	40° 35' 33.706 N
	+E/-W	0.0 usft	Easting:	3,201,497.11 usft	Longitude:	104° 46' 28.013 W
Position Uncertainty		0.0 usft	Wellhead Elevation:		Ground Level:	4,909.0 usft

Wellbore	Wellbore #1				
Magnetics	Model Name	Sample Date	Declination (°)	Dip Angle (°)	Field Strength (nT)
	IGRF2015	3/4/2020	7.94	66.94	52,180.14249616

Design	Design #1			
Audit Notes:				
Version:	Phase:	PLAN	Tie On Depth:	0.0
Vertical Section:	Depth From (TVD) (usft)	+N/-S (usft)	+E/-W (usft)	Direction (°)
	0.0	0.0	0.0	268.94

Plan Survey Tool Program	Date	3/4/2020		
Depth From (usft)	Depth To (usft)	Survey (Wellbore)	Tool Name	Remarks
1	0.0	17,255.7	Design #1 (Wellbore #1)	MWD
				OWSG MWD - Standard

Plan Sections										
Measured Depth (usft)	Inclination (°)	Azimuth (°)	Vertical Depth (usft)	+N/-S (usft)	+E/-W (usft)	Dogleg Rate (°/100usft)	Build Rate (°/100usft)	Turn Rate (°/100usft)	TFO (°)	Target
0.0	0.00	0.00	0.0	0.0	0.0	0.00	0.00	0.00	0.00	
1,500.0	0.00	0.00	1,500.0	0.0	0.0	0.00	0.00	0.00	0.00	
1,770.2	5.40	126.09	1,769.8	-7.5	10.3	2.00	2.00	0.00	126.09	
6,279.7	5.40	126.09	6,259.2	-257.7	353.5	0.00	0.00	0.00	0.00	
6,549.9	0.00	270.47	6,529.0	-265.2	363.8	2.00	-2.00	0.00	180.00	
6,749.9	0.00	270.47	6,729.0	-265.2	363.8	0.00	0.00	0.00	0.00	
7,649.9	90.00	270.47	7,302.0	-260.5	-209.1	10.00	10.00	0.00	0.00	MEAD 9 LP
17,255.7	90.00	270.47	7,302.0	-181.7	-9,814.7	0.00	0.00	0.00	0.00	MEAD 9 BHL



Database:	EDM	Local Co-ordinate Reference:	Well MEAD 9
Company:	Bayswater Exploration & Production, LLC	TVD Reference:	KB @ 4929.0usft (Original Well Elev)
Project:	DJ Basin	MD Reference:	KB @ 4929.0usft (Original Well Elev)
Site:	Mead 9-E Pad	North Reference:	True
Well:	MEAD 9	Survey Calculation Method:	Minimum Curvature
Wellbore:	Wellbore #1		
Design:	Design #1		

Planned Survey									
Measured Depth (usft)	Inclination (°)	Azimuth (°)	Vertical Depth (usft)	+N/-S (usft)	+E/-W (usft)	Vertical Section (usft)	Dogleg Rate (°/100usft)	Build Rate (°/100usft)	Turn Rate (°/100usft)
0.0	0.00	0.00	0.0	0.0	0.0	0.0	0.00	0.00	0.00
100.0	0.00	0.00	100.0	0.0	0.0	0.0	0.00	0.00	0.00
200.0	0.00	0.00	200.0	0.0	0.0	0.0	0.00	0.00	0.00
300.0	0.00	0.00	300.0	0.0	0.0	0.0	0.00	0.00	0.00
400.0	0.00	0.00	400.0	0.0	0.0	0.0	0.00	0.00	0.00
500.0	0.00	0.00	500.0	0.0	0.0	0.0	0.00	0.00	0.00
600.0	0.00	0.00	600.0	0.0	0.0	0.0	0.00	0.00	0.00
700.0	0.00	0.00	700.0	0.0	0.0	0.0	0.00	0.00	0.00
800.0	0.00	0.00	800.0	0.0	0.0	0.0	0.00	0.00	0.00
900.0	0.00	0.00	900.0	0.0	0.0	0.0	0.00	0.00	0.00
1,000.0	0.00	0.00	1,000.0	0.0	0.0	0.0	0.00	0.00	0.00
1,100.0	0.00	0.00	1,100.0	0.0	0.0	0.0	0.00	0.00	0.00
1,200.0	0.00	0.00	1,200.0	0.0	0.0	0.0	0.00	0.00	0.00
1,300.0	0.00	0.00	1,300.0	0.0	0.0	0.0	0.00	0.00	0.00
1,400.0	0.00	0.00	1,400.0	0.0	0.0	0.0	0.00	0.00	0.00
1,500.0	0.00	0.00	1,500.0	0.0	0.0	0.0	0.00	0.00	0.00
1,600.0	2.00	126.09	1,600.0	-1.0	1.4	-1.4	2.00	2.00	0.00
1,700.0	4.00	126.09	1,699.8	-4.1	5.6	-5.6	2.00	2.00	0.00
1,770.2	5.40	126.09	1,769.8	-7.5	10.3	-10.2	2.00	2.00	0.00
1,800.0	5.40	126.09	1,799.5	-9.2	12.6	-12.4	0.00	0.00	0.00
1,900.0	5.40	126.09	1,899.0	-14.7	20.2	-19.9	0.00	0.00	0.00
2,000.0	5.40	126.09	1,998.6	-20.2	27.8	-27.4	0.00	0.00	0.00
2,100.0	5.40	126.09	2,098.1	-25.8	35.4	-34.9	0.00	0.00	0.00
2,200.0	5.40	126.09	2,197.7	-31.3	43.0	-42.4	0.00	0.00	0.00
2,300.0	5.40	126.09	2,297.2	-36.9	50.6	-49.9	0.00	0.00	0.00
2,400.0	5.40	126.09	2,396.8	-42.4	58.2	-57.4	0.00	0.00	0.00
2,500.0	5.40	126.09	2,496.4	-48.0	65.8	-64.9	0.00	0.00	0.00
2,600.0	5.40	126.09	2,595.9	-53.5	73.4	-72.4	0.00	0.00	0.00
2,700.0	5.40	126.09	2,695.5	-59.1	81.1	-80.0	0.00	0.00	0.00
2,800.0	5.40	126.09	2,795.0	-64.6	88.7	-87.5	0.00	0.00	0.00
2,900.0	5.40	126.09	2,894.6	-70.2	96.3	-95.0	0.00	0.00	0.00
3,000.0	5.40	126.09	2,994.1	-75.7	103.9	-102.5	0.00	0.00	0.00
3,100.0	5.40	126.09	3,093.7	-81.3	111.5	-110.0	0.00	0.00	0.00
3,200.0	5.40	126.09	3,193.2	-86.8	119.1	-117.5	0.00	0.00	0.00
3,300.0	5.40	126.09	3,292.8	-92.4	126.7	-125.0	0.00	0.00	0.00
3,400.0	5.40	126.09	3,392.4	-97.9	134.3	-132.5	0.00	0.00	0.00
3,500.0	5.40	126.09	3,491.9	-103.5	142.0	-140.0	0.00	0.00	0.00
3,600.0	5.40	126.09	3,591.5	-109.0	149.6	-147.5	0.00	0.00	0.00
3,700.0	5.40	126.09	3,691.0	-114.6	157.2	-155.0	0.00	0.00	0.00
3,800.0	5.40	126.09	3,790.6	-120.1	164.8	-162.5	0.00	0.00	0.00
3,900.0	5.40	126.09	3,890.1	-125.7	172.4	-170.0	0.00	0.00	0.00
4,000.0	5.40	126.09	3,989.7	-131.2	180.0	-177.5	0.00	0.00	0.00
4,100.0	5.40	126.09	4,089.2	-136.8	187.6	-185.1	0.00	0.00	0.00
4,200.0	5.40	126.09	4,188.8	-142.3	195.2	-192.6	0.00	0.00	0.00
4,300.0	5.40	126.09	4,288.4	-147.9	202.8	-200.1	0.00	0.00	0.00
4,400.0	5.40	126.09	4,387.9	-153.4	210.5	-207.6	0.00	0.00	0.00
4,500.0	5.40	126.09	4,487.5	-158.9	218.1	-215.1	0.00	0.00	0.00
4,600.0	5.40	126.09	4,587.0	-164.5	225.7	-222.6	0.00	0.00	0.00
4,700.0	5.40	126.09	4,686.6	-170.0	233.3	-230.1	0.00	0.00	0.00
4,800.0	5.40	126.09	4,786.1	-175.6	240.9	-237.6	0.00	0.00	0.00
4,900.0	5.40	126.09	4,885.7	-181.1	248.5	-245.1	0.00	0.00	0.00
5,000.0	5.40	126.09	4,985.2	-186.7	256.1	-252.6	0.00	0.00	0.00
5,100.0	5.40	126.09	5,084.8	-192.2	263.7	-260.1	0.00	0.00	0.00
5,200.0	5.40	126.09	5,184.4	-197.8	271.3	-267.6	0.00	0.00	0.00



Database:	EDM	Local Co-ordinate Reference:	Well MEAD 9
Company:	Bayswater Exploration & Production, LLC	TVD Reference:	KB @ 4929.0usft (Original Well Elev)
Project:	DJ Basin	MD Reference:	KB @ 4929.0usft (Original Well Elev)
Site:	Mead 9-E Pad	North Reference:	True
Well:	MEAD 9	Survey Calculation Method:	Minimum Curvature
Wellbore:	Wellbore #1		
Design:	Design #1		

Planned Survey									
Measured Depth (usft)	Inclination (°)	Azimuth (°)	Vertical Depth (usft)	+N/-S (usft)	+E/-W (usft)	Vertical Section (usft)	Dogleg Rate (°/100usft)	Build Rate (°/100usft)	Turn Rate (°/100usft)
5,300.0	5.40	126.09	5,283.9	-203.3	279.0	-275.1	0.00	0.00	0.00
5,400.0	5.40	126.09	5,383.5	-208.9	286.6	-282.7	0.00	0.00	0.00
5,500.0	5.40	126.09	5,483.0	-214.4	294.2	-290.2	0.00	0.00	0.00
5,600.0	5.40	126.09	5,582.6	-220.0	301.8	-297.7	0.00	0.00	0.00
5,700.0	5.40	126.09	5,682.1	-225.5	309.4	-305.2	0.00	0.00	0.00
5,800.0	5.40	126.09	5,781.7	-231.1	317.0	-312.7	0.00	0.00	0.00
5,900.0	5.40	126.09	5,881.2	-236.6	324.6	-320.2	0.00	0.00	0.00
6,000.0	5.40	126.09	5,980.8	-242.2	332.2	-327.7	0.00	0.00	0.00
6,100.0	5.40	126.09	6,080.4	-247.7	339.8	-335.2	0.00	0.00	0.00
6,200.0	5.40	126.09	6,179.9	-253.3	347.5	-342.7	0.00	0.00	0.00
6,279.7	5.40	126.09	6,259.2	-257.7	353.5	-348.7	0.00	0.00	0.00
6,300.0	5.00	126.09	6,279.5	-258.8	355.0	-350.2	2.00	-2.00	0.00
6,400.0	3.00	126.09	6,379.2	-262.9	360.6	-355.7	2.00	-2.00	0.00
6,500.0	1.00	126.09	6,479.2	-264.9	363.5	-358.5	2.00	-2.00	0.00
6,549.9	0.00	270.47	6,529.0	-265.2	363.8	-358.8	2.00	-2.00	0.00
6,600.0	0.00	0.00	6,579.2	-265.2	363.8	-358.8	0.00	0.00	0.00
6,700.0	0.00	0.00	6,679.2	-265.2	363.8	-358.8	0.00	0.00	0.00
6,749.9	0.00	270.47	6,729.0	-265.2	363.8	-358.8	0.00	0.00	0.00
6,800.0	5.01	270.47	6,779.1	-265.2	361.6	-356.7	10.00	10.00	0.00
6,900.0	15.01	270.47	6,877.4	-265.0	344.3	-339.3	10.00	10.00	0.00
7,000.0	25.01	270.47	6,971.3	-264.7	310.1	-305.1	10.00	10.00	0.00
7,100.0	35.01	270.47	7,057.8	-264.3	260.1	-255.2	10.00	10.00	0.00
7,200.0	45.01	270.47	7,134.3	-263.8	195.9	-191.0	10.00	10.00	0.00
7,300.0	55.01	270.47	7,198.4	-263.2	119.4	-114.5	10.00	10.00	0.00
7,400.0	65.01	270.47	7,248.4	-262.5	32.9	-28.0	10.00	10.00	0.00
7,500.0	75.01	270.47	7,282.5	-261.7	-60.9	65.8	10.00	10.00	0.00
7,600.0	85.01	270.47	7,299.8	-260.9	-159.3	164.1	10.00	10.00	0.00
7,649.9	90.00	270.47	7,302.0	-260.5	-209.1	213.9	10.00	10.00	0.00
MEAD 9 LP									
7,700.0	90.00	270.47	7,302.0	-260.1	-259.2	264.0	0.00	0.00	0.00
7,800.0	90.00	270.47	7,302.0	-259.2	-359.2	364.0	0.00	0.00	0.00
7,900.0	90.00	270.47	7,302.0	-258.4	-459.2	463.9	0.00	0.00	0.00
8,000.0	90.00	270.47	7,302.0	-257.6	-559.2	563.9	0.00	0.00	0.00
8,100.0	90.00	270.47	7,302.0	-256.8	-659.2	663.9	0.00	0.00	0.00
8,200.0	90.00	270.47	7,302.0	-256.0	-759.2	763.8	0.00	0.00	0.00
8,300.0	90.00	270.47	7,302.0	-255.1	-859.2	863.8	0.00	0.00	0.00
8,400.0	90.00	270.47	7,302.0	-254.3	-959.2	963.8	0.00	0.00	0.00
8,500.0	90.00	270.47	7,302.0	-253.5	-1,059.2	1,063.7	0.00	0.00	0.00
8,600.0	90.00	270.47	7,302.0	-252.7	-1,159.2	1,163.7	0.00	0.00	0.00
8,700.0	90.00	270.47	7,302.0	-251.9	-1,259.2	1,263.6	0.00	0.00	0.00
8,800.0	90.00	270.47	7,302.0	-251.0	-1,359.2	1,363.6	0.00	0.00	0.00
8,900.0	90.00	270.47	7,302.0	-250.2	-1,459.2	1,463.6	0.00	0.00	0.00
9,000.0	90.00	270.47	7,302.0	-249.4	-1,559.2	1,563.5	0.00	0.00	0.00
9,100.0	90.00	270.47	7,302.0	-248.6	-1,659.2	1,663.5	0.00	0.00	0.00
9,200.0	90.00	270.47	7,302.0	-247.8	-1,759.2	1,763.5	0.00	0.00	0.00
9,300.0	90.00	270.47	7,302.0	-246.9	-1,859.2	1,863.4	0.00	0.00	0.00
9,400.0	90.00	270.47	7,302.0	-246.1	-1,959.2	1,963.4	0.00	0.00	0.00
9,500.0	90.00	270.47	7,302.0	-245.3	-2,059.2	2,063.4	0.00	0.00	0.00
9,600.0	90.00	270.47	7,302.0	-244.5	-2,159.2	2,163.3	0.00	0.00	0.00
9,700.0	90.00	270.47	7,302.0	-243.7	-2,259.2	2,263.3	0.00	0.00	0.00
9,800.0	90.00	270.47	7,302.0	-242.8	-2,359.2	2,363.3	0.00	0.00	0.00
9,900.0	90.00	270.47	7,302.0	-242.0	-2,459.2	2,463.2	0.00	0.00	0.00
10,000.0	90.00	270.47	7,302.0	-241.2	-2,559.2	2,563.2	0.00	0.00	0.00



Database:	EDM	Local Co-ordinate Reference:	Well MEAD 9
Company:	Bayswater Exploration & Production, LLC	TVD Reference:	KB @ 4929.0usft (Original Well Elev)
Project:	DJ Basin	MD Reference:	KB @ 4929.0usft (Original Well Elev)
Site:	Mead 9-E Pad	North Reference:	True
Well:	MEAD 9	Survey Calculation Method:	Minimum Curvature
Wellbore:	Wellbore #1		
Design:	Design #1		

Planned Survey									
Measured Depth (usft)	Inclination (°)	Azimuth (°)	Vertical Depth (usft)	+N/-S (usft)	+E/-W (usft)	Vertical Section (usft)	Dogleg Rate (°/100usft)	Build Rate (°/100usft)	Turn Rate (°/100usft)
10,100.0	90.00	270.47	7,302.0	-240.4	-2,659.2	2,663.1	0.00	0.00	0.00
10,200.0	90.00	270.47	7,302.0	-239.6	-2,759.1	2,763.1	0.00	0.00	0.00
10,300.0	90.00	270.47	7,302.0	-238.7	-2,859.1	2,863.1	0.00	0.00	0.00
10,400.0	90.00	270.47	7,302.0	-237.9	-2,959.1	2,963.0	0.00	0.00	0.00
10,500.0	90.00	270.47	7,302.0	-237.1	-3,059.1	3,063.0	0.00	0.00	0.00
10,600.0	90.00	270.47	7,302.0	-236.3	-3,159.1	3,163.0	0.00	0.00	0.00
10,700.0	90.00	270.47	7,302.0	-235.5	-3,259.1	3,262.9	0.00	0.00	0.00
10,800.0	90.00	270.47	7,302.0	-234.6	-3,359.1	3,362.9	0.00	0.00	0.00
10,900.0	90.00	270.47	7,302.0	-233.8	-3,459.1	3,462.9	0.00	0.00	0.00
11,000.0	90.00	270.47	7,302.0	-233.0	-3,559.1	3,562.8	0.00	0.00	0.00
11,100.0	90.00	270.47	7,302.0	-232.2	-3,659.1	3,662.8	0.00	0.00	0.00
11,200.0	90.00	270.47	7,302.0	-231.3	-3,759.1	3,762.8	0.00	0.00	0.00
11,300.0	90.00	270.47	7,302.0	-230.5	-3,859.1	3,862.7	0.00	0.00	0.00
11,400.0	90.00	270.47	7,302.0	-229.7	-3,959.1	3,962.7	0.00	0.00	0.00
11,500.0	90.00	270.47	7,302.0	-228.9	-4,059.1	4,062.6	0.00	0.00	0.00
11,600.0	90.00	270.47	7,302.0	-228.1	-4,159.1	4,162.6	0.00	0.00	0.00
11,700.0	90.00	270.47	7,302.0	-227.2	-4,259.1	4,262.6	0.00	0.00	0.00
11,800.0	90.00	270.47	7,302.0	-226.4	-4,359.1	4,362.5	0.00	0.00	0.00
11,900.0	90.00	270.47	7,302.0	-225.6	-4,459.1	4,462.5	0.00	0.00	0.00
12,000.0	90.00	270.47	7,302.0	-224.8	-4,559.1	4,562.5	0.00	0.00	0.00
12,100.0	90.00	270.47	7,302.0	-224.0	-4,659.1	4,662.4	0.00	0.00	0.00
12,200.0	90.00	270.47	7,302.0	-223.1	-4,759.1	4,762.4	0.00	0.00	0.00
12,300.0	90.00	270.47	7,302.0	-222.3	-4,859.1	4,862.4	0.00	0.00	0.00
12,400.0	90.00	270.47	7,302.0	-221.5	-4,959.1	4,962.3	0.00	0.00	0.00
12,500.0	90.00	270.47	7,302.0	-220.7	-5,059.1	5,062.3	0.00	0.00	0.00
12,600.0	90.00	270.47	7,302.0	-219.9	-5,159.1	5,162.3	0.00	0.00	0.00
12,700.0	90.00	270.47	7,302.0	-219.0	-5,259.1	5,262.2	0.00	0.00	0.00
12,800.0	90.00	270.47	7,302.0	-218.2	-5,359.1	5,362.2	0.00	0.00	0.00
12,900.0	90.00	270.47	7,302.0	-217.4	-5,459.1	5,462.1	0.00	0.00	0.00
13,000.0	90.00	270.47	7,302.0	-216.6	-5,559.1	5,562.1	0.00	0.00	0.00
13,100.0	90.00	270.47	7,302.0	-215.8	-5,659.1	5,662.1	0.00	0.00	0.00
13,200.0	90.00	270.47	7,302.0	-214.9	-5,759.0	5,762.0	0.00	0.00	0.00
13,300.0	90.00	270.47	7,302.0	-214.1	-5,859.0	5,862.0	0.00	0.00	0.00
13,400.0	90.00	270.47	7,302.0	-213.3	-5,959.0	5,962.0	0.00	0.00	0.00
13,500.0	90.00	270.47	7,302.0	-212.5	-6,059.0	6,061.9	0.00	0.00	0.00
13,600.0	90.00	270.47	7,302.0	-211.7	-6,159.0	6,161.9	0.00	0.00	0.00
13,700.0	90.00	270.47	7,302.0	-210.8	-6,259.0	6,261.9	0.00	0.00	0.00
13,800.0	90.00	270.47	7,302.0	-210.0	-6,359.0	6,361.8	0.00	0.00	0.00
13,900.0	90.00	270.47	7,302.0	-209.2	-6,459.0	6,461.8	0.00	0.00	0.00
14,000.0	90.00	270.47	7,302.0	-208.4	-6,559.0	6,561.8	0.00	0.00	0.00
14,100.0	90.00	270.47	7,302.0	-207.6	-6,659.0	6,661.7	0.00	0.00	0.00
14,200.0	90.00	270.47	7,302.0	-206.7	-6,759.0	6,761.7	0.00	0.00	0.00
14,300.0	90.00	270.47	7,302.0	-205.9	-6,859.0	6,861.6	0.00	0.00	0.00
14,400.0	90.00	270.47	7,302.0	-205.1	-6,959.0	6,961.6	0.00	0.00	0.00
14,500.0	90.00	270.47	7,302.0	-204.3	-7,059.0	7,061.6	0.00	0.00	0.00
14,600.0	90.00	270.47	7,302.0	-203.4	-7,159.0	7,161.5	0.00	0.00	0.00
14,700.0	90.00	270.47	7,302.0	-202.6	-7,259.0	7,261.5	0.00	0.00	0.00
14,800.0	90.00	270.47	7,302.0	-201.8	-7,359.0	7,361.5	0.00	0.00	0.00
14,900.0	90.00	270.47	7,302.0	-201.0	-7,459.0	7,461.4	0.00	0.00	0.00
15,000.0	90.00	270.47	7,302.0	-200.2	-7,559.0	7,561.4	0.00	0.00	0.00
15,100.0	90.00	270.47	7,302.0	-199.3	-7,659.0	7,661.4	0.00	0.00	0.00
15,200.0	90.00	270.47	7,302.0	-198.5	-7,759.0	7,761.3	0.00	0.00	0.00
15,300.0	90.00	270.47	7,302.0	-197.7	-7,859.0	7,861.3	0.00	0.00	0.00
15,400.0	90.00	270.47	7,302.0	-196.9	-7,959.0	7,961.3	0.00	0.00	0.00



Database:	EDM	Local Co-ordinate Reference:	Well MEAD 9
Company:	Bayswater Exploration & Production, LLC	TVD Reference:	KB @ 4929.0usft (Original Well Elev)
Project:	DJ Basin	MD Reference:	KB @ 4929.0usft (Original Well Elev)
Site:	Mead 9-E Pad	North Reference:	True
Well:	MEAD 9	Survey Calculation Method:	Minimum Curvature
Wellbore:	Wellbore #1		
Design:	Design #1		

Planned Survey										
Measured Depth (usft)	Inclination (°)	Azimuth (°)	Vertical Depth (usft)	+N/-S (usft)	+E/-W (usft)	Vertical Section (usft)	Dogleg Rate (°/100usft)	Build Rate (°/100usft)	Turn Rate (°/100usft)	
15,500.0	90.00	270.47	7,302.0	-196.1	-8,059.0	8,061.2	0.00	0.00	0.00	
15,600.0	90.00	270.47	7,302.0	-195.2	-8,159.0	8,161.2	0.00	0.00	0.00	
15,700.0	90.00	270.47	7,302.0	-194.4	-8,259.0	8,261.1	0.00	0.00	0.00	
15,800.0	90.00	270.47	7,302.0	-193.6	-8,359.0	8,361.1	0.00	0.00	0.00	
15,900.0	90.00	270.47	7,302.0	-192.8	-8,459.0	8,461.1	0.00	0.00	0.00	
16,000.0	90.00	270.47	7,302.0	-192.0	-8,559.0	8,561.0	0.00	0.00	0.00	
16,100.0	90.00	270.47	7,302.0	-191.1	-8,658.9	8,661.0	0.00	0.00	0.00	
16,200.0	90.00	270.47	7,302.0	-190.3	-8,758.9	8,761.0	0.00	0.00	0.00	
16,300.0	90.00	270.47	7,302.0	-189.5	-8,858.9	8,860.9	0.00	0.00	0.00	
16,400.0	90.00	270.47	7,302.0	-188.7	-8,958.9	8,960.9	0.00	0.00	0.00	
16,500.0	90.00	270.47	7,302.0	-187.9	-9,058.9	9,060.9	0.00	0.00	0.00	
16,600.0	90.00	270.47	7,302.0	-187.0	-9,158.9	9,160.8	0.00	0.00	0.00	
16,700.0	90.00	270.47	7,302.0	-186.2	-9,258.9	9,260.8	0.00	0.00	0.00	
16,800.0	90.00	270.47	7,302.0	-185.4	-9,358.9	9,360.8	0.00	0.00	0.00	
16,900.0	90.00	270.47	7,302.0	-184.6	-9,458.9	9,460.7	0.00	0.00	0.00	
17,000.0	90.00	270.47	7,302.0	-183.8	-9,558.9	9,560.7	0.00	0.00	0.00	
17,100.0	90.00	270.47	7,302.0	-182.9	-9,658.9	9,660.6	0.00	0.00	0.00	
17,200.0	90.00	270.47	7,302.0	-182.1	-9,758.9	9,760.6	0.00	0.00	0.00	
17,255.7	90.00	270.47	7,302.0	-181.7	-9,814.7	9,816.3	0.00	0.00	0.00	
MEAD 9 BHL										

Design Targets									
Target Name	Dip Angle (°)	Dip Dir. (°)	TVD (usft)	+N/-S (usft)	+E/-W (usft)	Northing (usft)	Easting (usft)	Latitude	
- hit/miss target									
- Shape								Longitude	
MEAD 9 LP	0.00	0.00	7,302.0	-260.5	-209.1	1,459,322.72	3,201,290.12	40° 35' 31.132 N	
- plan hits target center									
- Point								104° 46' 30.724 W	
MEAD 9 BHL	0.00	0.00	7,302.0	-181.7	-9,814.7	1,459,322.95	3,191,684.27	40° 35' 31.891 N	
- plan hits target center									
- Point								104° 48' 35.237 W	