



**BAYSWATER**

# **Bayswater Exploration & Production, LLC**

**DJ Basin**

**Mead 9-E Pad**

**MEAD 8**

**Wellbore #1**

**Plan: Design #1**

## **Standard Planning Report**

**05 March, 2020**



Pad Name: Mead 9-E Pad  
Well Name: MEAD 8  
Ground Level: 4909.0  
SHL Latitude: 40° 35' 33.853 N  
SHL Longitude: 104° 46' 28.013 W

## SECTION DETAILS

Sec	MD	Inc	Azi	TVD	+N/-S	+E/-W	Dleg	TFace	VSect	Target
1	0.0	0.00	0.00	0.0	0.0	0.0	0.00	0.00	0.0	
2	1500.0	0.00	0.00	1500.0	0.0	0.0	0.00	0.00	0.0	
3	1717.9	4.36	82.17	1717.7	1.1	8.2	2.00	82.17	-8.2	
4	6324.9	4.36	82.17	6311.3	48.8	355.1	0.00	0.00	-354.4	
5	6542.8	0.00	270.47	6529.0	50.0	363.3	2.00	180.00	-362.6	
6	6742.8	0.00	270.47	6729.0	50.0	363.3	0.00	0.00	-362.6	
7	7642.8	90.00	270.47	7302.0	54.7	-209.7	10.00	0.00	210.4	MEAD 8 LP
8	17243.8	90.00	270.47	7302.0	133.1	-9810.4	0.00	0.00	9811.3	MEAD 8 BHL

## DESIGN TARGET DETAILS

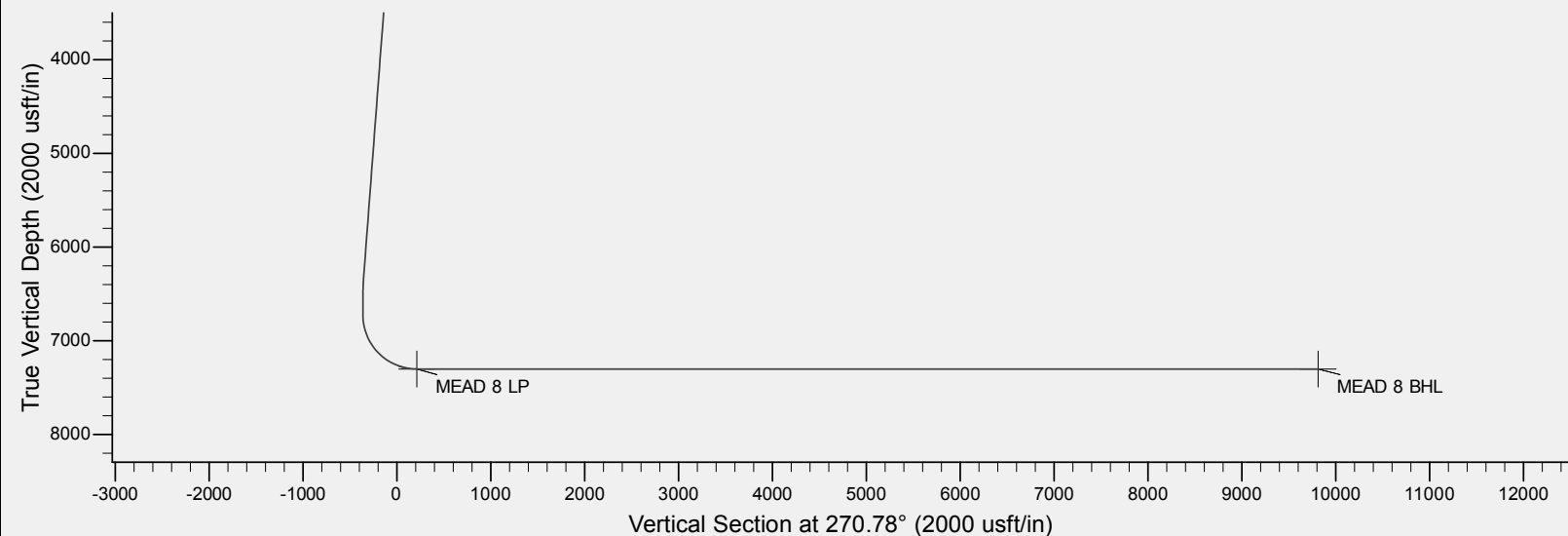
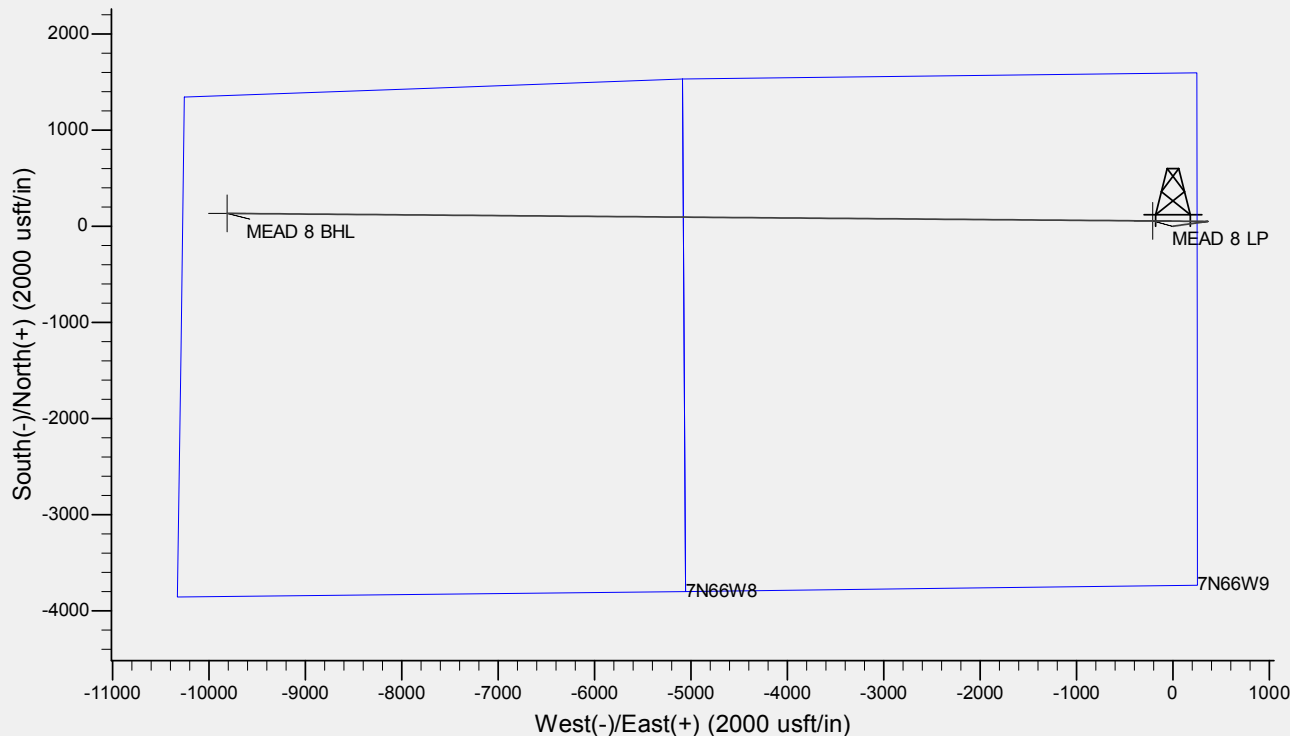
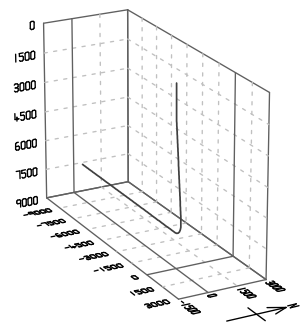
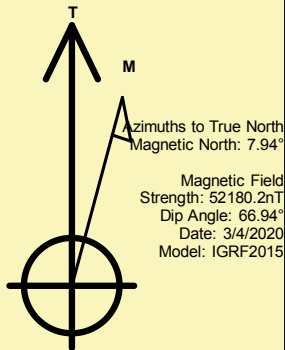
Name	TVD	+N/-S	+E/-W	Northing	Easting	Latitude	Longitude	Shape
MEAD 8 LP	7302.0	54.7	-209.7	1459652.77	3201286.87	40° 35' 34.393 N	104° 46' 30.731 W	Point
MEAD 8 BHL	- plan hits target center 7302.0	133.1	-9810.4	1459652.67	3191685.87	40° 35' 35.149 N	104° 48' 35.183 W	Point

## REFERENCE INFORMATION

Co-ordinate (N/E) Reference: Well MEAD 8, True North  
Vertical (TVD) Reference: KB @ 4929.0usft (Original Well Elev)  
Section (VS) Reference: Slot - (0.0N, 0.0E)  
Measured Depth Reference: KB @ 4929.0usft (Original Well Elev)  
Calculation Method: Minimum Curvature

## CASING DETAILS

No casing data is available





<b>Database:</b>	EDM	<b>Local Co-ordinate Reference:</b>	Well MEAD 8
<b>Company:</b>	Bayswater Exploration & Production, LLC	<b>TVD Reference:</b>	KB @ 4929.0usft (Original Well Elev)
<b>Project:</b>	DJ Basin	<b>MD Reference:</b>	KB @ 4929.0usft (Original Well Elev)
<b>Site:</b>	Mead 9-E Pad	<b>North Reference:</b>	True
<b>Well:</b>	MEAD 8	<b>Survey Calculation Method:</b>	Minimum Curvature
<b>Wellbore:</b>	Wellbore #1		
<b>Design:</b>	Design #1		

<b>Project</b>	DJ Basin, DJ Basin		
<b>Map System:</b>	US State Plane 1983	<b>System Datum:</b>	Mean Sea Level
<b>Geo Datum:</b>	North American Datum 1983		
<b>Map Zone:</b>	Colorado Northern Zone		

Site	Mead 9-E Pad				
Site Position:		Northing:	1,459,659.95 usft	Latitude:	40° 35' 34.447 N
From:	Lat/Long	Easting:	3,201,496.50 usft	Longitude:	104° 46' 28.013 W
Position Uncertainty:	0.0 usft	Slot Radius:	13-3/16 "	Grid Convergence:	0.47 °

Well	MEAD 8					
Well Position	+N/-S	-60.1 usft	Northing:	1,459,599.84 usft	Latitude:	40° 35' 33.853 N
	+E/-W	0.0 usft	Easting:	3,201,496.99 usft	Longitude:	104° 46' 28.013 W
Position Uncertainty		0.0 usft	Wellhead Elevation:		Ground Level:	4,909.0 usft

<b>Wellbore</b>	Wellbore #1				
<b>Magnetics</b>	<b>Model Name</b>	<b>Sample Date</b>	<b>Declination (°)</b>	<b>Dip Angle (°)</b>	<b>Field Strength (nT)</b>
	IGRF2015	3/4/2020	7.94	66.94	52,180.16354753

<b>Design</b>	Design #1			
<b>Audit Notes:</b>				
<b>Version:</b>	<b>Phase:</b>	PLAN	<b>Tie On Depth:</b>	0.0
<b>Vertical Section:</b>	<b>Depth From (TVD) (usft)</b>	<b>+N/-S (usft)</b>	<b>+E/-W (usft)</b>	<b>Direction (°)</b>
	0.0	0.0	0.0	270.78

<b>Plan Survey Tool Program</b>	<b>Date</b>	3/4/2020		
<b>Depth From (usft)</b>	<b>Depth To (usft)</b>	<b>Survey (Wellbore)</b>	<b>Tool Name</b>	<b>Remarks</b>
1	0.0	17,243.8	Design #1 (Wellbore #1)	MWD
				OWSG MWD - Standard

<b>Plan Sections</b>										
<b>Measured Depth (usft)</b>	<b>Inclination (°)</b>	<b>Azimuth (°)</b>	<b>Vertical Depth (usft)</b>	<b>+N/-S (usft)</b>	<b>+E/-W (usft)</b>	<b>Dogleg Rate (°/100usft)</b>	<b>Build Rate (°/100usft)</b>	<b>Turn Rate (°/100usft)</b>	<b>TFO (°)</b>	<b>Target</b>
0.0	0.00	0.00	0.0	0.0	0.0	0.00	0.00	0.00	0.00	
1,500.0	0.00	0.00	1,500.0	0.0	0.0	0.00	0.00	0.00	0.00	
1,717.9	4.36	82.17	1,717.7	1.1	8.2	2.00	2.00	0.00	82.17	
6,324.9	4.36	82.17	6,311.3	48.8	355.1	0.00	0.00	0.00	0.00	
6,542.8	0.00	270.47	6,529.0	50.0	363.3	2.00	-2.00	0.00	180.00	
6,742.8	0.00	270.47	6,729.0	50.0	363.3	0.00	0.00	0.00	0.00	
7,642.8	90.00	270.47	7,302.0	54.7	-209.7	10.00	10.00	0.00	0.00	MEAD 8 LP
17,243.8	90.00	270.47	7,302.0	133.1	-9,810.4	0.00	0.00	0.00	0.00	MEAD 8 BHL



<b>Database:</b>	EDM	<b>Local Co-ordinate Reference:</b>	Well MEAD 8
<b>Company:</b>	Bayswater Exploration & Production, LLC	<b>TVD Reference:</b>	KB @ 4929.0usft (Original Well Elev)
<b>Project:</b>	DJ Basin	<b>MD Reference:</b>	KB @ 4929.0usft (Original Well Elev)
<b>Site:</b>	Mead 9-E Pad	<b>North Reference:</b>	True
<b>Well:</b>	MEAD 8	<b>Survey Calculation Method:</b>	Minimum Curvature
<b>Wellbore:</b>	Wellbore #1		
<b>Design:</b>	Design #1		

Planned Survey									
Measured Depth (usft)	Inclination (°)	Azimuth (°)	Vertical Depth (usft)	+N/-S (usft)	+E/-W (usft)	Vertical Section (usft)	Dogleg Rate (°/100usft)	Build Rate (°/100usft)	Turn Rate (°/100usft)
0.0	0.00	0.00	0.0	0.0	0.0	0.0	0.00	0.00	0.00
100.0	0.00	0.00	100.0	0.0	0.0	0.0	0.00	0.00	0.00
200.0	0.00	0.00	200.0	0.0	0.0	0.0	0.00	0.00	0.00
300.0	0.00	0.00	300.0	0.0	0.0	0.0	0.00	0.00	0.00
400.0	0.00	0.00	400.0	0.0	0.0	0.0	0.00	0.00	0.00
500.0	0.00	0.00	500.0	0.0	0.0	0.0	0.00	0.00	0.00
600.0	0.00	0.00	600.0	0.0	0.0	0.0	0.00	0.00	0.00
700.0	0.00	0.00	700.0	0.0	0.0	0.0	0.00	0.00	0.00
800.0	0.00	0.00	800.0	0.0	0.0	0.0	0.00	0.00	0.00
900.0	0.00	0.00	900.0	0.0	0.0	0.0	0.00	0.00	0.00
1,000.0	0.00	0.00	1,000.0	0.0	0.0	0.0	0.00	0.00	0.00
1,100.0	0.00	0.00	1,100.0	0.0	0.0	0.0	0.00	0.00	0.00
1,200.0	0.00	0.00	1,200.0	0.0	0.0	0.0	0.00	0.00	0.00
1,300.0	0.00	0.00	1,300.0	0.0	0.0	0.0	0.00	0.00	0.00
1,400.0	0.00	0.00	1,400.0	0.0	0.0	0.0	0.00	0.00	0.00
1,500.0	0.00	0.00	1,500.0	0.0	0.0	0.0	0.00	0.00	0.00
1,600.0	2.00	82.17	1,600.0	0.2	1.7	-1.7	2.00	2.00	0.00
1,700.0	4.00	82.17	1,699.8	1.0	6.9	-6.9	2.00	2.00	0.00
1,717.9	4.36	82.17	1,717.7	1.1	8.2	-8.2	2.00	2.00	0.00
1,800.0	4.36	82.17	1,799.6	2.0	14.4	-14.4	0.00	0.00	0.00
1,900.0	4.36	82.17	1,899.3	3.0	21.9	-21.9	0.00	0.00	0.00
2,000.0	4.36	82.17	1,999.0	4.1	29.4	-29.4	0.00	0.00	0.00
2,100.0	4.36	82.17	2,098.7	5.1	37.0	-36.9	0.00	0.00	0.00
2,200.0	4.36	82.17	2,198.4	6.1	44.5	-44.4	0.00	0.00	0.00
2,300.0	4.36	82.17	2,298.1	7.2	52.0	-51.9	0.00	0.00	0.00
2,400.0	4.36	82.17	2,397.8	8.2	59.6	-59.4	0.00	0.00	0.00
2,500.0	4.36	82.17	2,497.5	9.2	67.1	-67.0	0.00	0.00	0.00
2,600.0	4.36	82.17	2,597.2	10.3	74.6	-74.5	0.00	0.00	0.00
2,700.0	4.36	82.17	2,696.9	11.3	82.1	-82.0	0.00	0.00	0.00
2,800.0	4.36	82.17	2,796.7	12.3	89.7	-89.5	0.00	0.00	0.00
2,900.0	4.36	82.17	2,896.4	13.4	97.2	-97.0	0.00	0.00	0.00
3,000.0	4.36	82.17	2,996.1	14.4	104.7	-104.5	0.00	0.00	0.00
3,100.0	4.36	82.17	3,095.8	15.4	112.3	-112.0	0.00	0.00	0.00
3,200.0	4.36	82.17	3,195.5	16.5	119.8	-119.6	0.00	0.00	0.00
3,300.0	4.36	82.17	3,295.2	17.5	127.3	-127.1	0.00	0.00	0.00
3,400.0	4.36	82.17	3,394.9	18.5	134.8	-134.6	0.00	0.00	0.00
3,500.0	4.36	82.17	3,494.6	19.6	142.4	-142.1	0.00	0.00	0.00
3,600.0	4.36	82.17	3,594.3	20.6	149.9	-149.6	0.00	0.00	0.00
3,700.0	4.36	82.17	3,694.1	21.7	157.4	-157.1	0.00	0.00	0.00
3,800.0	4.36	82.17	3,793.8	22.7	165.0	-164.6	0.00	0.00	0.00
3,900.0	4.36	82.17	3,893.5	23.7	172.5	-172.2	0.00	0.00	0.00
4,000.0	4.36	82.17	3,993.2	24.8	180.0	-179.7	0.00	0.00	0.00
4,100.0	4.36	82.17	4,092.9	25.8	187.5	-187.2	0.00	0.00	0.00
4,200.0	4.36	82.17	4,192.6	26.8	195.1	-194.7	0.00	0.00	0.00
4,300.0	4.36	82.17	4,292.3	27.9	202.6	-202.2	0.00	0.00	0.00
4,400.0	4.36	82.17	4,392.0	28.9	210.1	-209.7	0.00	0.00	0.00
4,500.0	4.36	82.17	4,491.7	29.9	217.7	-217.2	0.00	0.00	0.00
4,600.0	4.36	82.17	4,591.5	31.0	225.2	-224.8	0.00	0.00	0.00
4,700.0	4.36	82.17	4,691.2	32.0	232.7	-232.3	0.00	0.00	0.00
4,800.0	4.36	82.17	4,790.9	33.0	240.3	-239.8	0.00	0.00	0.00
4,900.0	4.36	82.17	4,890.6	34.1	247.8	-247.3	0.00	0.00	0.00
5,000.0	4.36	82.17	4,990.3	35.1	255.3	-254.8	0.00	0.00	0.00
5,100.0	4.36	82.17	5,090.0	36.2	262.8	-262.3	0.00	0.00	0.00
5,200.0	4.36	82.17	5,189.7	37.2	270.4	-269.8	0.00	0.00	0.00



<b>Database:</b>	EDM	<b>Local Co-ordinate Reference:</b>	Well MEAD 8
<b>Company:</b>	Bayswater Exploration & Production, LLC	<b>TVD Reference:</b>	KB @ 4929.0usft (Original Well Elev)
<b>Project:</b>	DJ Basin	<b>MD Reference:</b>	KB @ 4929.0usft (Original Well Elev)
<b>Site:</b>	Mead 9-E Pad	<b>North Reference:</b>	True
<b>Well:</b>	MEAD 8	<b>Survey Calculation Method:</b>	Minimum Curvature
<b>Wellbore:</b>	Wellbore #1		
<b>Design:</b>	Design #1		

Planned Survey									
Measured Depth (usft)	Inclination (°)	Azimuth (°)	Vertical Depth (usft)	+N/-S (usft)	+E/-W (usft)	Vertical Section (usft)	Dogleg Rate (°/100usft)	Build Rate (°/100usft)	Turn Rate (°/100usft)
5,300.0	4.36	82.17	5,289.4	38.2	277.9	-277.4	0.00	0.00	0.00
5,400.0	4.36	82.17	5,389.1	39.3	285.4	-284.9	0.00	0.00	0.00
5,500.0	4.36	82.17	5,488.9	40.3	293.0	-292.4	0.00	0.00	0.00
5,600.0	4.36	82.17	5,588.6	41.3	300.5	-299.9	0.00	0.00	0.00
5,700.0	4.36	82.17	5,688.3	42.4	308.0	-307.4	0.00	0.00	0.00
5,800.0	4.36	82.17	5,788.0	43.4	315.5	-314.9	0.00	0.00	0.00
5,900.0	4.36	82.17	5,887.7	44.4	323.1	-322.4	0.00	0.00	0.00
6,000.0	4.36	82.17	5,987.4	45.5	330.6	-329.9	0.00	0.00	0.00
6,100.0	4.36	82.17	6,087.1	46.5	338.1	-337.5	0.00	0.00	0.00
6,200.0	4.36	82.17	6,186.8	47.5	345.7	-345.0	0.00	0.00	0.00
6,300.0	4.36	82.17	6,286.5	48.6	353.2	-352.5	0.00	0.00	0.00
6,324.9	4.36	82.17	6,311.3	48.8	355.1	-354.4	0.00	0.00	0.00
6,400.0	2.86	82.17	6,386.3	49.5	359.7	-359.0	2.00	-2.00	0.00
6,500.0	0.86	82.17	6,486.3	49.9	362.9	-362.2	2.00	-2.00	0.00
6,542.8	0.00	270.47	6,529.0	50.0	363.3	-362.6	2.00	-2.00	0.00
6,600.0	0.00	0.00	6,586.3	50.0	363.3	-362.6	0.00	0.00	0.00
6,700.0	0.00	0.00	6,686.3	50.0	363.3	-362.6	0.00	0.00	0.00
6,742.8	0.00	270.47	6,729.0	50.0	363.3	-362.6	0.00	0.00	0.00
6,800.0	5.72	270.47	6,786.2	50.0	360.4	-359.7	10.00	10.00	0.00
6,900.0	15.72	270.47	6,884.3	50.1	341.8	-341.1	10.00	10.00	0.00
7,000.0	25.72	270.47	6,977.7	50.4	306.5	-305.8	10.00	10.00	0.00
7,100.0	35.72	270.47	7,063.6	50.9	255.5	-254.8	10.00	10.00	0.00
7,200.0	45.72	270.47	7,139.3	51.4	190.3	-189.6	10.00	10.00	0.00
7,300.0	55.72	270.47	7,202.5	52.0	113.0	-112.3	10.00	10.00	0.00
7,400.0	65.72	270.47	7,251.3	52.7	25.9	-25.2	10.00	10.00	0.00
7,500.0	75.72	270.47	7,284.3	53.5	-68.4	69.1	10.00	10.00	0.00
7,600.0	85.72	270.47	7,300.4	54.3	-166.9	167.7	10.00	10.00	0.00
7,642.8	90.00	270.47	7,302.0	54.7	-209.7	210.4	10.00	10.00	0.00
<b>MEAD 8 LP</b>									
7,700.0	90.00	270.47	7,302.0	55.1	-266.9	267.6	0.00	0.00	0.00
7,800.0	90.00	270.47	7,302.0	55.9	-366.9	367.6	0.00	0.00	0.00
7,900.0	90.00	270.47	7,302.0	56.8	-466.9	467.6	0.00	0.00	0.00
8,000.0	90.00	270.47	7,302.0	57.6	-566.9	567.6	0.00	0.00	0.00
8,100.0	90.00	270.47	7,302.0	58.4	-666.9	667.6	0.00	0.00	0.00
8,200.0	90.00	270.47	7,302.0	59.2	-766.9	767.6	0.00	0.00	0.00
8,300.0	90.00	270.47	7,302.0	60.0	-866.9	867.6	0.00	0.00	0.00
8,400.0	90.00	270.47	7,302.0	60.8	-966.9	967.6	0.00	0.00	0.00
8,500.0	90.00	270.47	7,302.0	61.7	-1,066.9	1,067.6	0.00	0.00	0.00
8,600.0	90.00	270.47	7,302.0	62.5	-1,166.9	1,167.6	0.00	0.00	0.00
8,700.0	90.00	270.47	7,302.0	63.3	-1,266.9	1,267.6	0.00	0.00	0.00
8,800.0	90.00	270.47	7,302.0	64.1	-1,366.9	1,367.6	0.00	0.00	0.00
8,900.0	90.00	270.47	7,302.0	64.9	-1,466.8	1,467.6	0.00	0.00	0.00
9,000.0	90.00	270.47	7,302.0	65.7	-1,566.8	1,567.6	0.00	0.00	0.00
9,100.0	90.00	270.47	7,302.0	66.6	-1,666.8	1,667.6	0.00	0.00	0.00
9,200.0	90.00	270.47	7,302.0	67.4	-1,766.8	1,767.6	0.00	0.00	0.00
9,300.0	90.00	270.47	7,302.0	68.2	-1,866.8	1,867.6	0.00	0.00	0.00
9,400.0	90.00	270.47	7,302.0	69.0	-1,966.8	1,967.6	0.00	0.00	0.00
9,500.0	90.00	270.47	7,302.0	69.8	-2,066.8	2,067.6	0.00	0.00	0.00
9,600.0	90.00	270.47	7,302.0	70.6	-2,166.8	2,167.6	0.00	0.00	0.00
9,700.0	90.00	270.47	7,302.0	71.5	-2,266.8	2,267.6	0.00	0.00	0.00
9,800.0	90.00	270.47	7,302.0	72.3	-2,366.8	2,367.6	0.00	0.00	0.00
9,900.0	90.00	270.47	7,302.0	73.1	-2,466.8	2,467.6	0.00	0.00	0.00
10,000.0	90.00	270.47	7,302.0	73.9	-2,566.8	2,567.6	0.00	0.00	0.00



<b>Database:</b>	EDM	<b>Local Co-ordinate Reference:</b>	Well MEAD 8
<b>Company:</b>	Bayswater Exploration & Production, LLC	<b>TVD Reference:</b>	KB @ 4929.0usft (Original Well Elev)
<b>Project:</b>	DJ Basin	<b>MD Reference:</b>	KB @ 4929.0usft (Original Well Elev)
<b>Site:</b>	Mead 9-E Pad	<b>North Reference:</b>	True
<b>Well:</b>	MEAD 8	<b>Survey Calculation Method:</b>	Minimum Curvature
<b>Wellbore:</b>	Wellbore #1		
<b>Design:</b>	Design #1		

Planned Survey										
Measured Depth (usft)	Inclination (°)	Azimuth (°)	Vertical Depth (usft)	+N/-S (usft)	+E/-W (usft)	Vertical Section (usft)	Dogleg Rate (°/100usft)	Build Rate (°/100usft)	Turn Rate (°/100usft)	
10,100.0	90.00	270.47	7,302.0	74.7	-2,666.8	2,667.6	0.00	0.00	0.00	
10,200.0	90.00	270.47	7,302.0	75.5	-2,766.8	2,767.6	0.00	0.00	0.00	
10,300.0	90.00	270.47	7,302.0	76.4	-2,866.8	2,867.6	0.00	0.00	0.00	
10,400.0	90.00	270.47	7,302.0	77.2	-2,966.8	2,967.6	0.00	0.00	0.00	
10,500.0	90.00	270.47	7,302.0	78.0	-3,066.8	3,067.6	0.00	0.00	0.00	
10,600.0	90.00	270.47	7,302.0	78.8	-3,166.8	3,167.6	0.00	0.00	0.00	
10,700.0	90.00	270.47	7,302.0	79.6	-3,266.8	3,267.6	0.00	0.00	0.00	
10,800.0	90.00	270.47	7,302.0	80.5	-3,366.8	3,367.6	0.00	0.00	0.00	
10,900.0	90.00	270.47	7,302.0	81.3	-3,466.8	3,467.6	0.00	0.00	0.00	
11,000.0	90.00	270.47	7,302.0	82.1	-3,566.8	3,567.6	0.00	0.00	0.00	
11,100.0	90.00	270.47	7,302.0	82.9	-3,666.8	3,667.6	0.00	0.00	0.00	
11,200.0	90.00	270.47	7,302.0	83.7	-3,766.8	3,767.6	0.00	0.00	0.00	
11,300.0	90.00	270.47	7,302.0	84.5	-3,866.8	3,867.6	0.00	0.00	0.00	
11,400.0	90.00	270.47	7,302.0	85.4	-3,966.8	3,967.6	0.00	0.00	0.00	
11,500.0	90.00	270.47	7,302.0	86.2	-4,066.8	4,067.6	0.00	0.00	0.00	
11,600.0	90.00	270.47	7,302.0	87.0	-4,166.8	4,167.6	0.00	0.00	0.00	
11,700.0	90.00	270.47	7,302.0	87.8	-4,266.8	4,267.6	0.00	0.00	0.00	
11,800.0	90.00	270.47	7,302.0	88.6	-4,366.8	4,367.6	0.00	0.00	0.00	
11,900.0	90.00	270.47	7,302.0	89.4	-4,466.7	4,467.6	0.00	0.00	0.00	
12,000.0	90.00	270.47	7,302.0	90.3	-4,566.7	4,567.6	0.00	0.00	0.00	
12,100.0	90.00	270.47	7,302.0	91.1	-4,666.7	4,667.5	0.00	0.00	0.00	
12,200.0	90.00	270.47	7,302.0	91.9	-4,766.7	4,767.5	0.00	0.00	0.00	
12,300.0	90.00	270.47	7,302.0	92.7	-4,866.7	4,867.5	0.00	0.00	0.00	
12,400.0	90.00	270.47	7,302.0	93.5	-4,966.7	4,967.5	0.00	0.00	0.00	
12,500.0	90.00	270.47	7,302.0	94.3	-5,066.7	5,067.5	0.00	0.00	0.00	
12,600.0	90.00	270.47	7,302.0	95.2	-5,166.7	5,167.5	0.00	0.00	0.00	
12,700.0	90.00	270.47	7,302.0	96.0	-5,266.7	5,267.5	0.00	0.00	0.00	
12,800.0	90.00	270.47	7,302.0	96.8	-5,366.7	5,367.5	0.00	0.00	0.00	
12,900.0	90.00	270.47	7,302.0	97.6	-5,466.7	5,467.5	0.00	0.00	0.00	
13,000.0	90.00	270.47	7,302.0	98.4	-5,566.7	5,567.5	0.00	0.00	0.00	
13,100.0	90.00	270.47	7,302.0	99.2	-5,666.7	5,667.5	0.00	0.00	0.00	
13,200.0	90.00	270.47	7,302.0	100.1	-5,766.7	5,767.5	0.00	0.00	0.00	
13,300.0	90.00	270.47	7,302.0	100.9	-5,866.7	5,867.5	0.00	0.00	0.00	
13,400.0	90.00	270.47	7,302.0	101.7	-5,966.7	5,967.5	0.00	0.00	0.00	
13,500.0	90.00	270.47	7,302.0	102.5	-6,066.7	6,067.5	0.00	0.00	0.00	
13,600.0	90.00	270.47	7,302.0	103.3	-6,166.7	6,167.5	0.00	0.00	0.00	
13,700.0	90.00	270.47	7,302.0	104.2	-6,266.7	6,267.5	0.00	0.00	0.00	
13,800.0	90.00	270.47	7,302.0	105.0	-6,366.7	6,367.5	0.00	0.00	0.00	
13,900.0	90.00	270.47	7,302.0	105.8	-6,466.7	6,467.5	0.00	0.00	0.00	
14,000.0	90.00	270.47	7,302.0	106.6	-6,566.7	6,567.5	0.00	0.00	0.00	
14,100.0	90.00	270.47	7,302.0	107.4	-6,666.7	6,667.5	0.00	0.00	0.00	
14,200.0	90.00	270.47	7,302.0	108.2	-6,766.7	6,767.5	0.00	0.00	0.00	
14,300.0	90.00	270.47	7,302.0	109.1	-6,866.7	6,867.5	0.00	0.00	0.00	
14,400.0	90.00	270.47	7,302.0	109.9	-6,966.7	6,967.5	0.00	0.00	0.00	
14,500.0	90.00	270.47	7,302.0	110.7	-7,066.7	7,067.5	0.00	0.00	0.00	
14,600.0	90.00	270.47	7,302.0	111.5	-7,166.7	7,167.5	0.00	0.00	0.00	
14,700.0	90.00	270.47	7,302.0	112.3	-7,266.7	7,267.5	0.00	0.00	0.00	
14,800.0	90.00	270.47	7,302.0	113.1	-7,366.7	7,367.5	0.00	0.00	0.00	
14,900.0	90.00	270.47	7,302.0	114.0	-7,466.6	7,467.5	0.00	0.00	0.00	
15,000.0	90.00	270.47	7,302.0	114.8	-7,566.6	7,567.5	0.00	0.00	0.00	
15,100.0	90.00	270.47	7,302.0	115.6	-7,666.6	7,667.5	0.00	0.00	0.00	
15,200.0	90.00	270.47	7,302.0	116.4	-7,766.6	7,767.5	0.00	0.00	0.00	
15,300.0	90.00	270.47	7,302.0	117.2	-7,866.6	7,867.5	0.00	0.00	0.00	
15,400.0	90.00	270.47	7,302.0	118.0	-7,966.6	7,967.5	0.00	0.00	0.00	



<b>Database:</b>	EDM	<b>Local Co-ordinate Reference:</b>	Well MEAD 8
<b>Company:</b>	Bayswater Exploration & Production, LLC	<b>TVD Reference:</b>	KB @ 4929.0usft (Original Well Elev)
<b>Project:</b>	DJ Basin	<b>MD Reference:</b>	KB @ 4929.0usft (Original Well Elev)
<b>Site:</b>	Mead 9-E Pad	<b>North Reference:</b>	True
<b>Well:</b>	MEAD 8	<b>Survey Calculation Method:</b>	Minimum Curvature
<b>Wellbore:</b>	Wellbore #1		
<b>Design:</b>	Design #1		

Planned Survey										
Measured Depth (usft)	Inclination (°)	Azimuth (°)	Vertical Depth (usft)	+N/-S (usft)	+E/-W (usft)	Vertical Section (usft)	Dogleg Rate (°/100usft)	Build Rate (°/100usft)	Turn Rate (°/100usft)	
15,500.0	90.00	270.47	7,302.0	118.9	-8,066.6	8,067.5	0.00	0.00	0.00	
15,600.0	90.00	270.47	7,302.0	119.7	-8,166.6	8,167.5	0.00	0.00	0.00	
15,700.0	90.00	270.47	7,302.0	120.5	-8,266.6	8,267.5	0.00	0.00	0.00	
15,800.0	90.00	270.47	7,302.0	121.3	-8,366.6	8,367.5	0.00	0.00	0.00	
15,900.0	90.00	270.47	7,302.0	122.1	-8,466.6	8,467.5	0.00	0.00	0.00	
16,000.0	90.00	270.47	7,302.0	122.9	-8,566.6	8,567.5	0.00	0.00	0.00	
16,100.0	90.00	270.47	7,302.0	123.8	-8,666.6	8,667.5	0.00	0.00	0.00	
16,200.0	90.00	270.47	7,302.0	124.6	-8,766.6	8,767.5	0.00	0.00	0.00	
16,300.0	90.00	270.47	7,302.0	125.4	-8,866.6	8,867.5	0.00	0.00	0.00	
16,400.0	90.00	270.47	7,302.0	126.2	-8,966.6	8,967.5	0.00	0.00	0.00	
16,500.0	90.00	270.47	7,302.0	127.0	-9,066.6	9,067.5	0.00	0.00	0.00	
16,600.0	90.00	270.47	7,302.0	127.9	-9,166.6	9,167.5	0.00	0.00	0.00	
16,700.0	90.00	270.47	7,302.0	128.7	-9,266.6	9,267.5	0.00	0.00	0.00	
16,800.0	90.00	270.47	7,302.0	129.5	-9,366.6	9,367.5	0.00	0.00	0.00	
16,900.0	90.00	270.47	7,302.0	130.3	-9,466.6	9,467.5	0.00	0.00	0.00	
17,000.0	90.00	270.47	7,302.0	131.1	-9,566.6	9,567.5	0.00	0.00	0.00	
17,100.0	90.00	270.47	7,302.0	131.9	-9,666.6	9,667.5	0.00	0.00	0.00	
17,200.0	90.00	270.47	7,302.0	132.8	-9,766.6	9,767.5	0.00	0.00	0.00	
17,243.8	90.00	270.47	7,302.0	133.1	-9,810.4	9,811.3	0.00	0.00	0.00	
MEAD 8 BHL										

Design Targets									
Target Name	Dip Angle (°)	Dip Dir. (°)	TVD (usft)	+N/-S (usft)	+E/-W (usft)	Northing (usft)	Easting (usft)	Latitude	
- hit/miss target									
- Shape								Longitude	
MEAD 8 LP	0.00	0.00	7,302.0	54.7	-209.7	1,459,652.77	3,201,286.87	40° 35' 34.393 N	
- plan hits target center									
- Point								104° 46' 30.731 W	
MEAD 8 BHL	0.00	0.00	7,302.0	133.1	-9,810.4	1,459,652.68	3,191,685.87	40° 35' 35.149 N	
- plan hits target center									
- Point								104° 48' 35.183 W	